



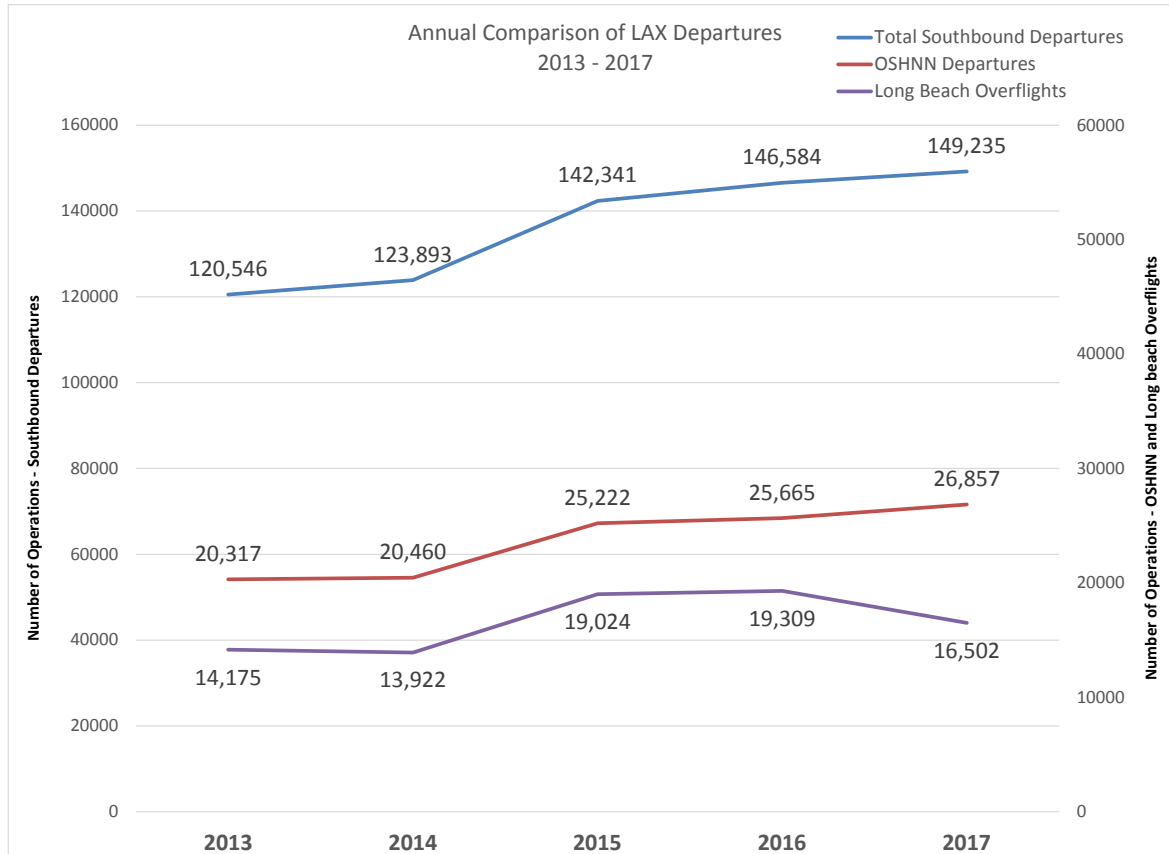
# Analysis of LAX Operations Over Long Beach

LAX/Community Noise Roundtable

January 10, 2018

- Review LAX departures and arrivals over Long Beach
- Identify and analyze any changes
  - SoCal Metroplex implementation
- Summary of Results

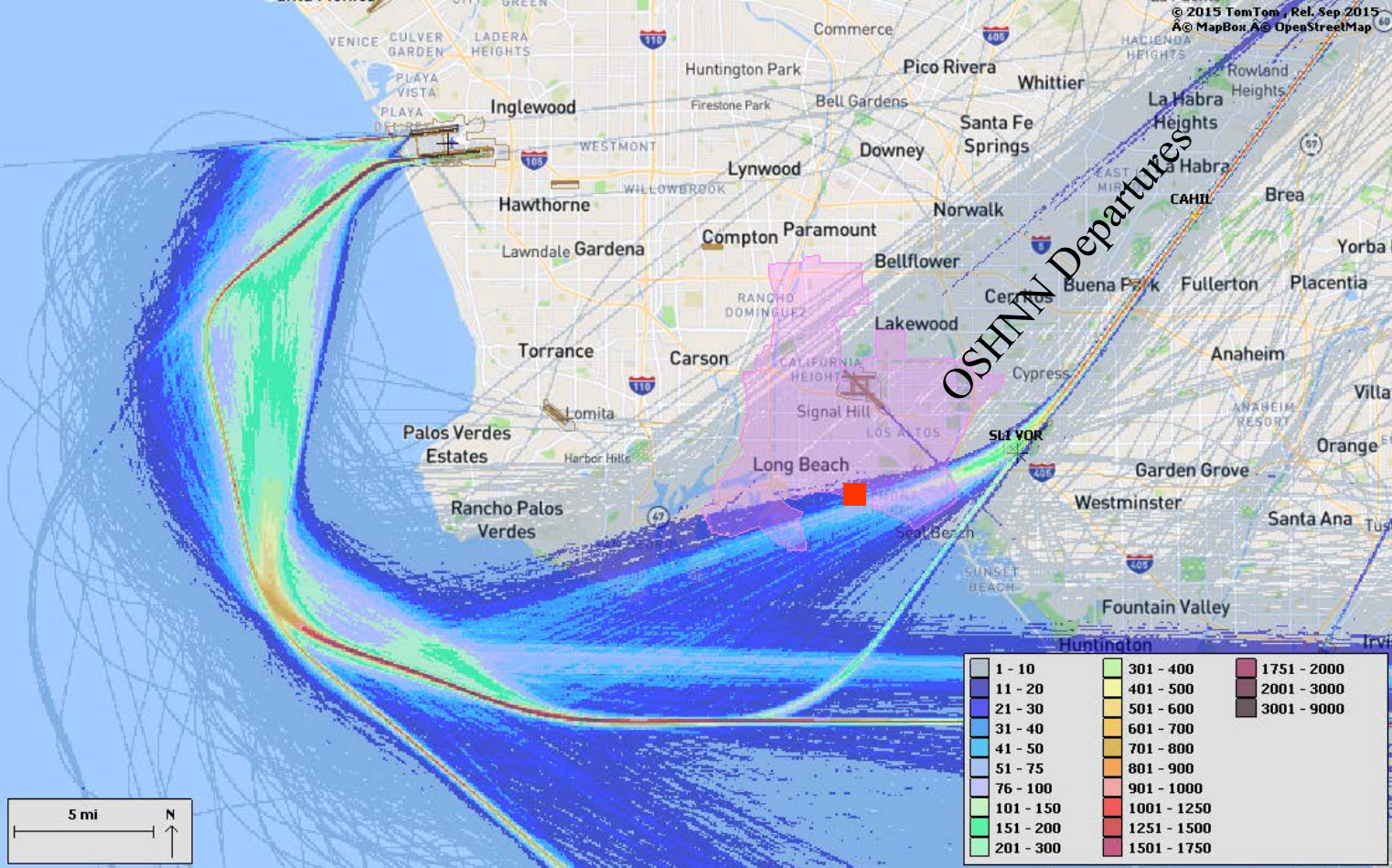
# Analysis of LAX Departure Operations



- Increased southbound departures year to year
- OSHNN departures ~ 17 – 18 % of southbound departures
- **Decreased Long Beach overflights in 2017**

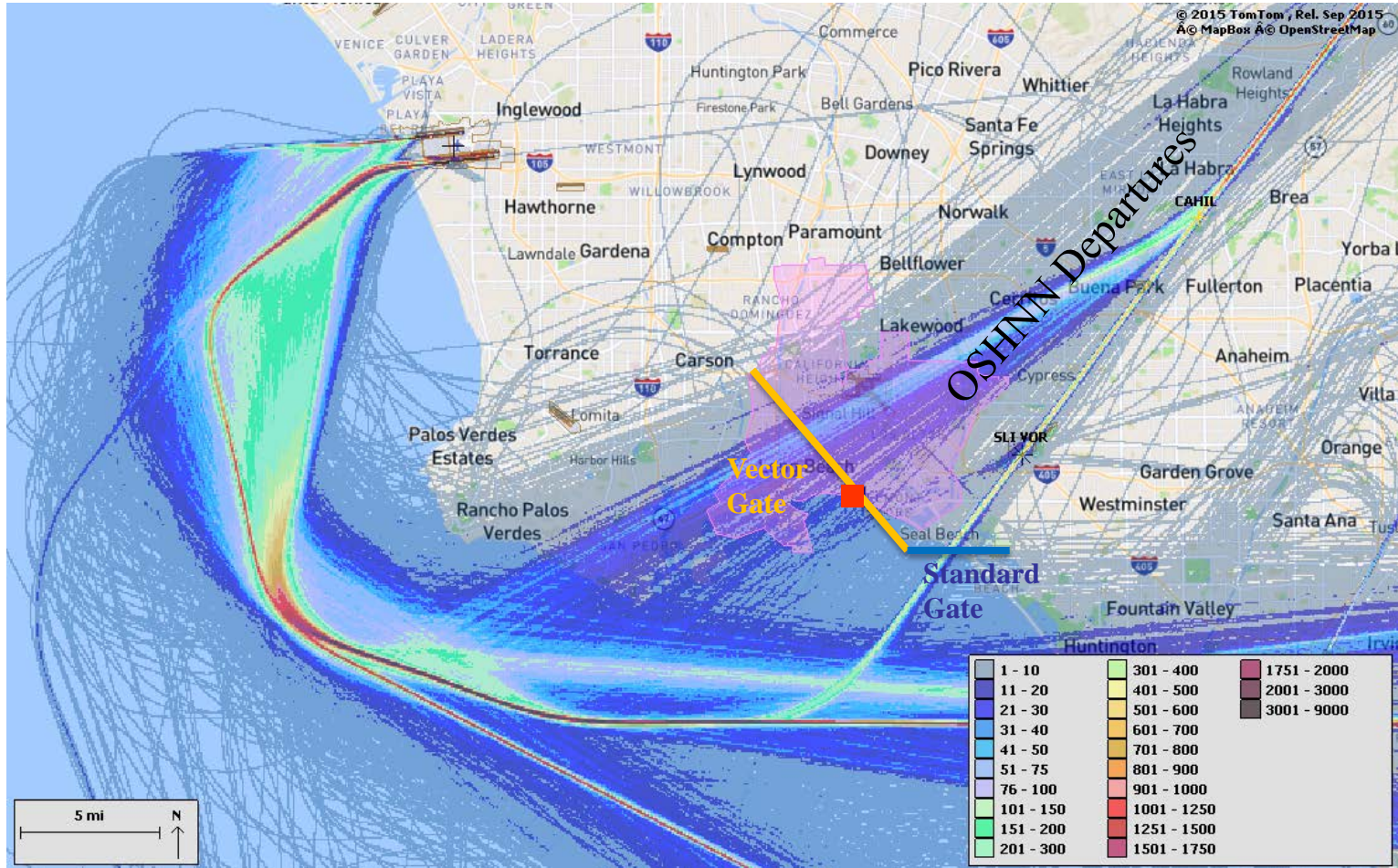
# Pre Phase 2 Metroplex Implementation

## LAX Southbound Jet Departures – 1 Month (February 2017)

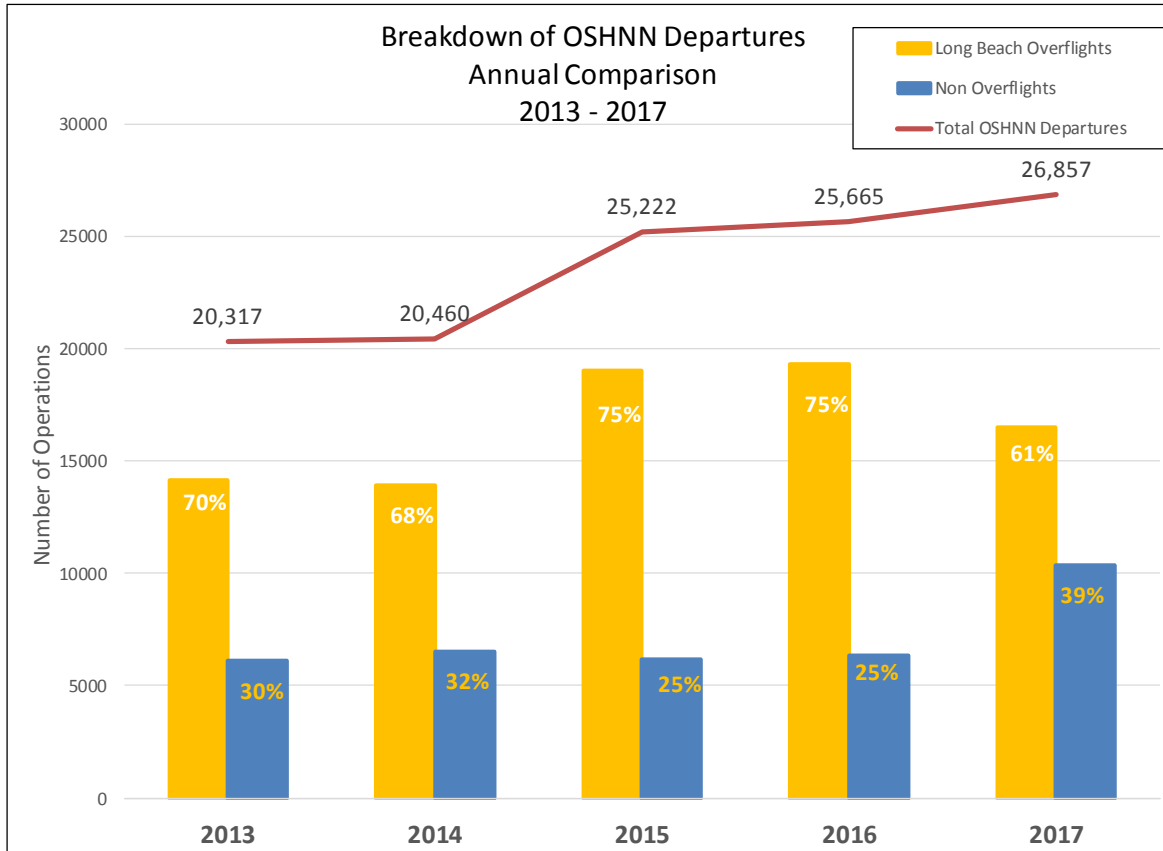


# Post Metroplex Implementation

## LAX Southbound Jet Departures – 1 Month (May 2017)

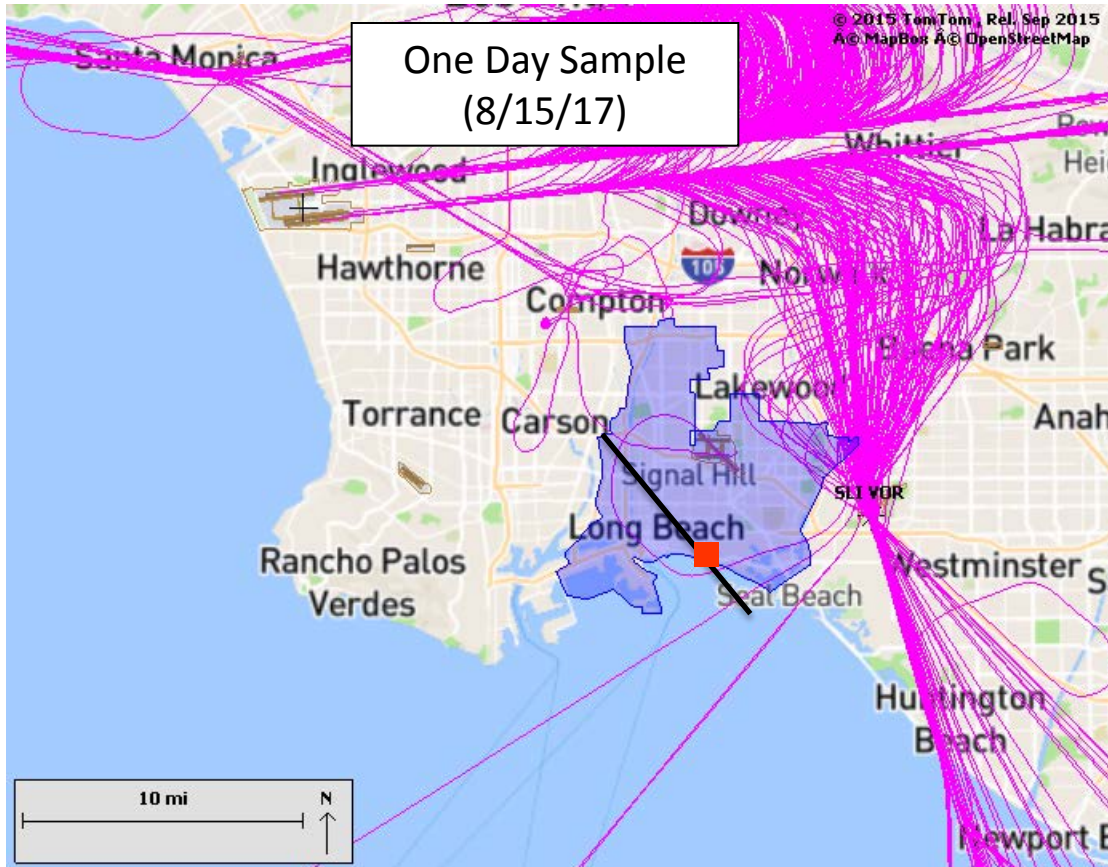


# Analysis of OSHNN Departure Operations



- 14% decrease in departures over Long Beach in 2017
- Decrease in aircraft vectored over Long Beach with Metroplex implementation

# Analysis of LAX Arrival Operations



- Very low LAX arrival operations over Long Beach
- In 2017, there were 183 LAX arrivals out of 44,130 total arrivals from the south  
~ 1 overflight every 2 days

## LAX Departures

- **Fewer departure flights over Long Beach**
  - Over 10 % decrease in aircraft vectored over Long Beach after Metroplex implementation
  - Path of vectored aircraft shifted to northwest
  - Aircraft altitude unchanged for 2016 and 2017: 95% at or above 13,000 ft

## LAX Arrivals

- **Sporadic Aircraft Arrivals over Long Beach**
  - Average: 1 arrival every 2 days