

Status Report Noise Mitigation Programs

Presentation to the LAX/Community
Noise Roundtable

May 8, 2013



*Los Angeles
World Airports*

*Environmental Services Division
Sound Insulation Grant Program*



Aircraft Sound Insulation Programs at LAX

- ✈ Land uses around airports such as residences, schools, hospitals and places of worship, with a Community Noise Equivalent Level (CNEL) of 65 dB, are generally considered “incompatible” with the airport
- ✈ Los Angeles International Airport (LAX) has an FAA-approved Noise Compatibility Program, which makes certain residential areas eligible for FAA funding
- ✈ Federal (ANSA, 1979), State (Title 21, 1970) and Local (Reso 21481, 2001) rules provide eligibility and funding structure.

LAX Program Participants

Residential Programs

- City of El Segundo
- City of Inglewood
- City of Los Angeles
- County of Los Angeles

School Programs

- Inglewood Unified School District
- Lennox School District

Program Governance and Funding

Stipulated Settlement Agreement (2006)

- Provides up to \$240M in noise mitigation funding for Cities of El Segundo, Inglewood, County of LA
 - Initial disbursement for 2006 and 2007 of \$60M
 - "Future Funding" for 2008 – 2015 has annual cap of \$22.5M shared by 3 jurisdictions; maximum of \$180M over 8 year period

Community Benefits Agreement (2005)

- Minimum Funding for County of LA and City of Inglewood (\$4.275M for each)
- Other Benefits - end-of-block soundproofing, suspension/purchase of avigation easements (≥ 75 dBL)

LAWA's Sound Insulation Grant Program

Re-Visioning the Sound Insulation Grant Program

- Enhancing program monitoring and construction oversight
-
- Increased Outreach to all Stakeholders- local sponsors, contractors, architects, and manufacturers
- Focused assistance to Jurisdictions to improve local sound insulation process
- Funding provided of \$20M in last 12 months
- Assessment of impact of FAA clarification of RSI and Schools Insulation programs (PGL 12-09)

How Noise is Mitigated

Typical Sound Insulation Techniques:

Residential:

- Replacing windows, and doors (including hardware and weather-stripping)
- Adding insulation in attics, and installing baffles at attic vents
- Installing glass fireplace doors, and chimney top dampers

Schools:

- Replacement of doors and new threshold for the exterior classroom doors
- Install new windows where wood replacement or dry wall-blocked windows currently exist
- Exterior wall insulation and interior sound panels as needed

Both:

- Mechanical system upgrades (HVAC/PVS) with sound traps and vibration control as needed
- Target of 45 dB interior noise level, and/or a 5 dB reduction

KP1

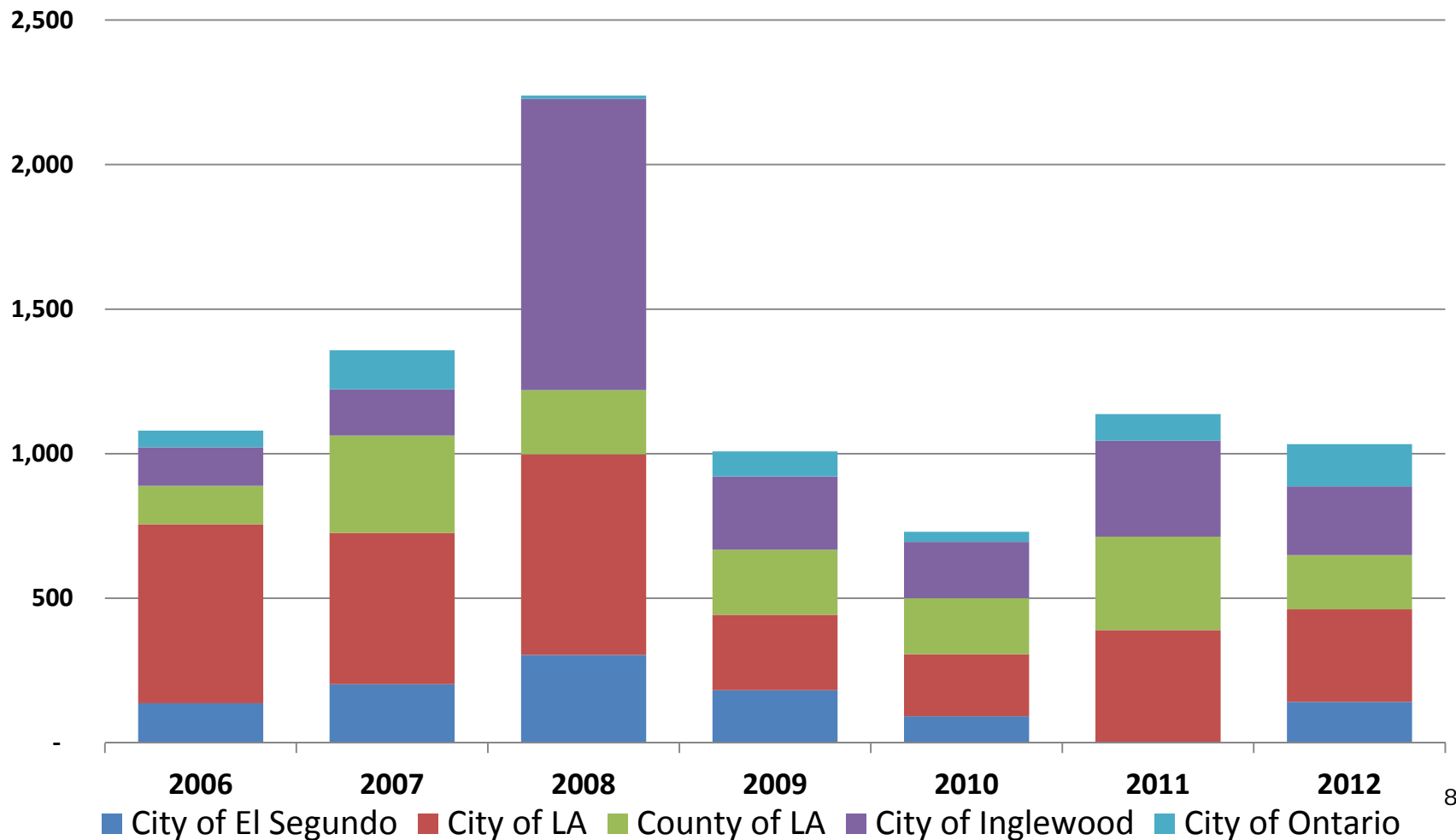
Typical Residential Acquisition (City of LA only):

- Purchase properties in areas zoned for commercial or industrial uses
- Redevelop parcels per local planning and zoning

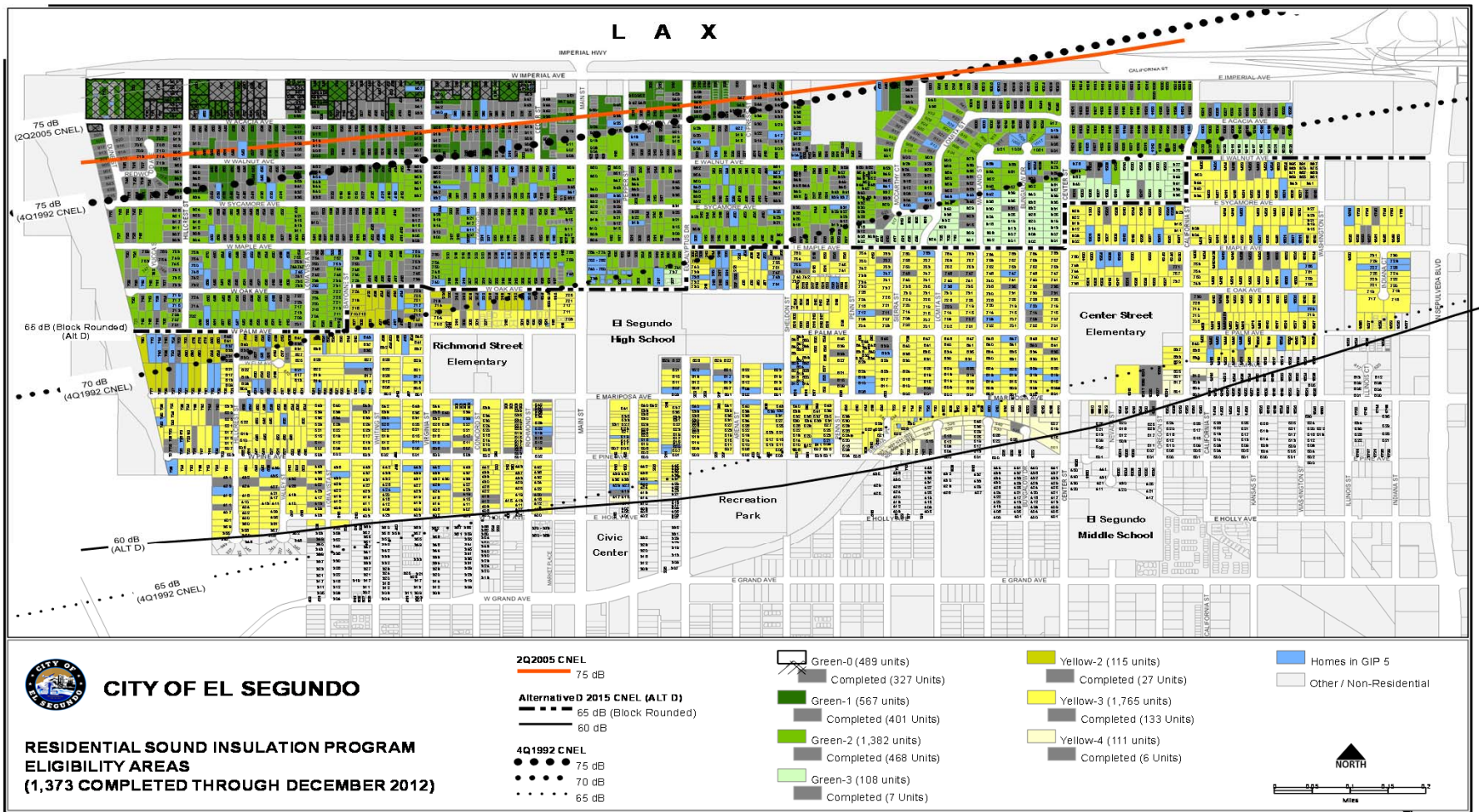
Yearly Progress for LAWA Sound Insulation Programs

	Total Units Eligible	Units Completed Pre-2006	Program Production Rates for RSI Programs 2006 - 2012								All Totals Mitigated Start-2012	Total Units Remaining	Percent of Units Cmpltd
			Total Mitigated	Total Mitigated	Total Mitigated	Total Mitigated	Total Mitigated	Total Mitigated	Total Mitigated	Total Mitigated			
			2006	2007	2008	2009	2010	2011	2012	2006-2012			
Jurisdiction													
City of El Segundo	4,537	212	137	203	304	182	92	0	142	1,060	1,272	3,265	28%
City of LA	8,886	4,307	619	523	694	261	215	390	320	3,022	7,329	1,557	82%
County of LA	6,200	779	133	337	222	225	193	323	187	1,620	2,399	3,801	39%
City of Inglewood	8,700	1,763	133	159	1,007	253	195	332	238	2,317	4,080	4,620	47%
City of Ontario	2,418	813	58	136	12	87	35	92	146	566	1,379	1,039	57%
Totals	30,741	7,874	1,080	1,358	2,239	1,008	730	1,137	1,033	8,585	16,459	14,058	54%

Annual Production Rates 2006-12 for Residential Sound Insulation



City of El Segundo



City of El Segundo

Program Status: 1993-2012

Total Funding	Total Units Mitigated	To Be Mitigated	2011-2012 Funding	2011-2012 FAA Funding	2011-2012 LAWA Funding	Units mitigated 2011-2012	2011-2012 Expenses	Average Cost/per unit **
\$73,007,558	1,272	3,265	\$10.5M	\$5M	\$5.5M	142	\$4.9M	\$35,114

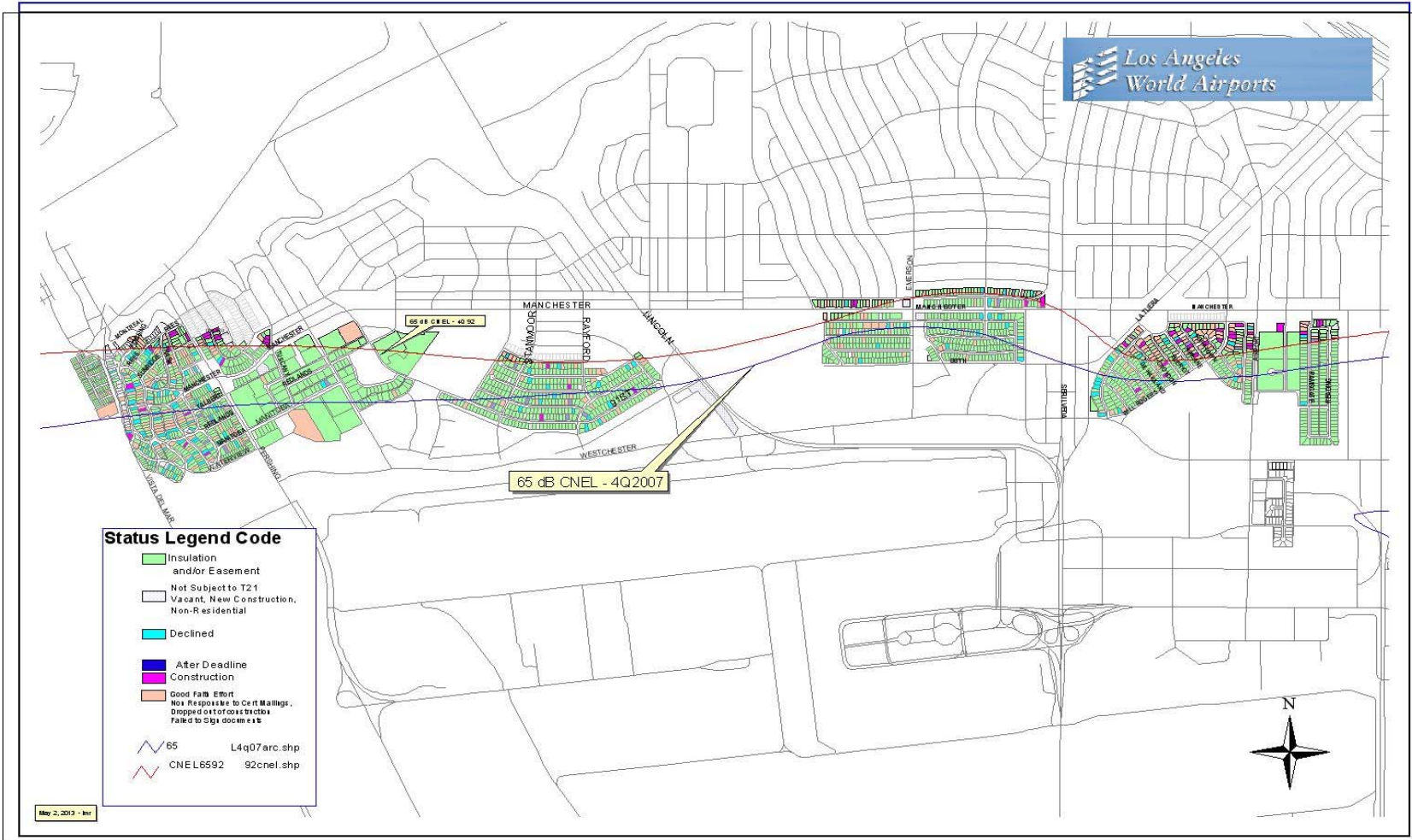
* El Segundo began accepting 20% match from LAWA with the signed Stipulated Settlement Agreement in 2006.

** This figure is based on the amount of expenditures divided by the number of units mitigated, and may not accurately reflect actual per unit costs.

Recent Action:

- \$9.225M in LAWA funding provided in February 2013 combined w/FAA funds of \$5M for 329 units.

City of Los Angeles Council District No. 11



City of Los Angeles Council District No. 8



City of Los Angeles Program Status: 1997-2012

Total Funding	Total Units Mitigated	To Be Mitigated	2011-2012 Funding*	Units mitigated 2011-2012	2011-2012 Expenses**	Average Cost/per unit ***
\$156,000,000	7,090	239	\$7.7M	541	\$10.4M	\$19,298

* Reflects construction costs plus 20% for administration

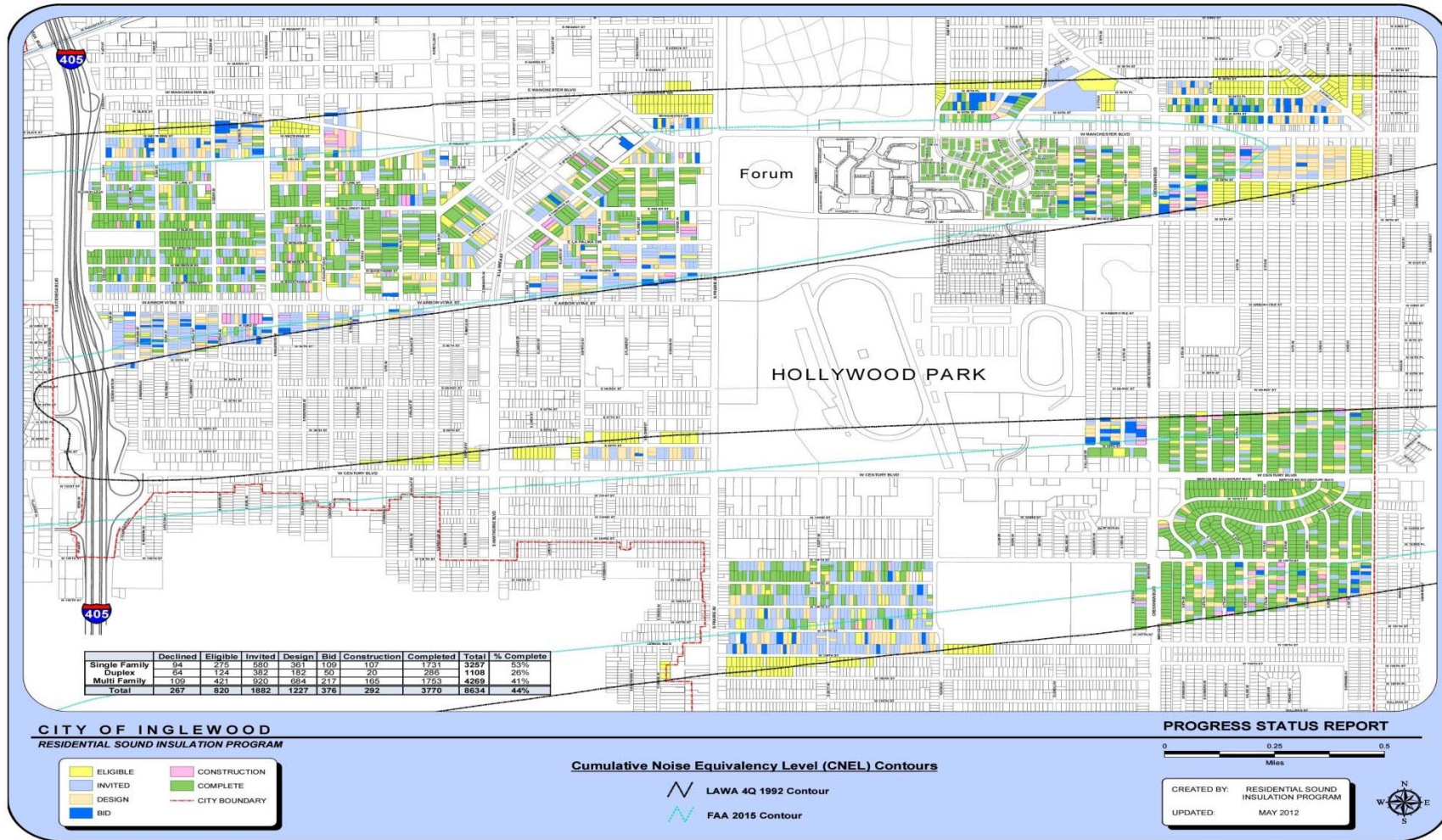
** Reflects construction expenses plus 20% administration

*** This figure is an average based on the amount of funding provided divided by the number of units mitigated.

Recent Actions:

- ➔ Funding of \$1.215M provided for 71 units in CD 11 in June 2012.
- ➔ Funding of \$2.163M funding provided in November 2012 for 112 units in both CD 8 and CD 11.

City of Inglewood



City of Inglewood Program Status: 1992-2012

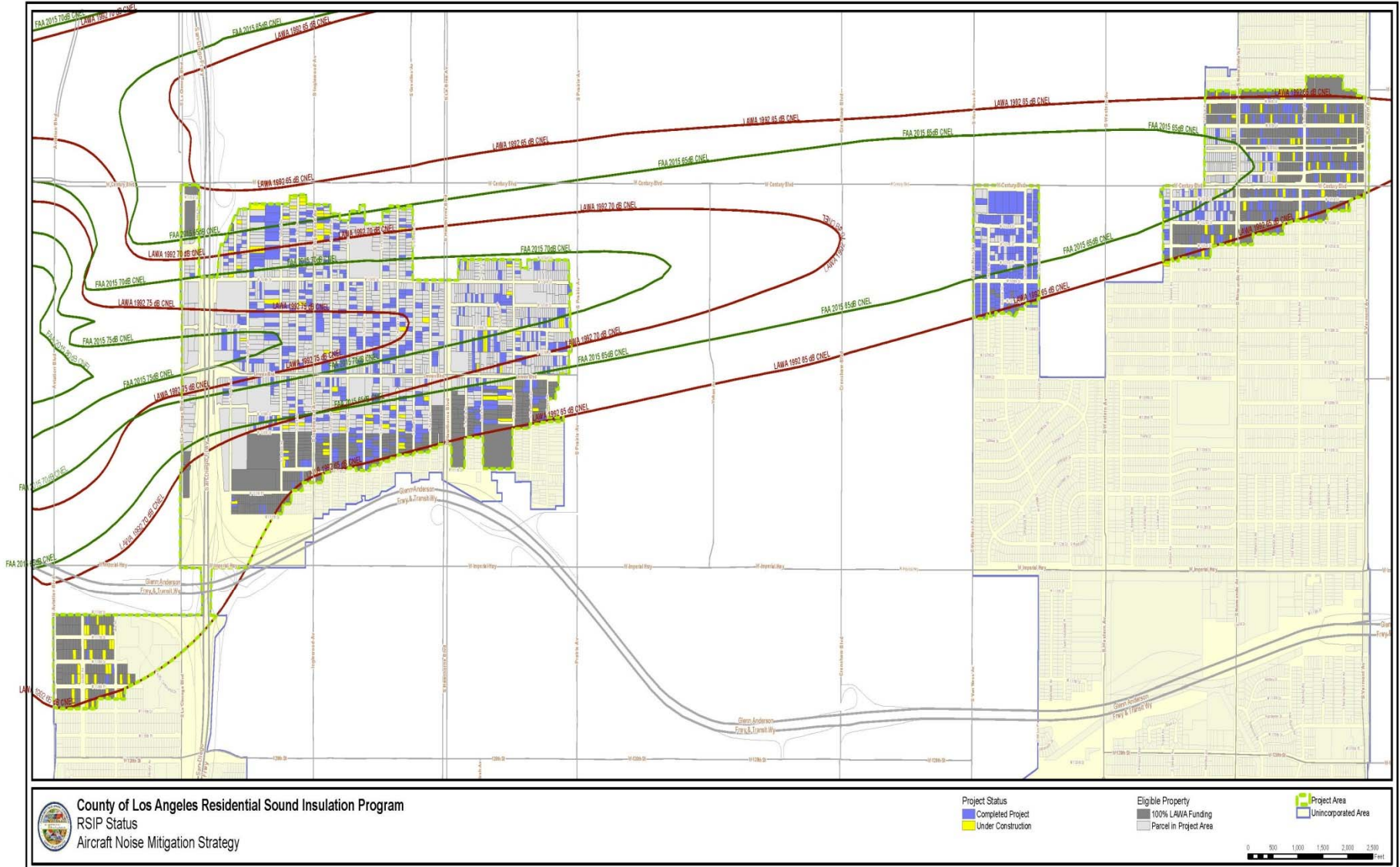
Total Funding	Total Units Mitigated	To Be Mitigated	2011-2012 Funding	2011-2012 FAA Funding	2011-2012 LAWA Funding	Units Mitigated 2011-2012	Total Expenses	Average Cost/per unit **
\$197,719,402	4,021	4,679	\$25M	\$25M	\$0	570	\$23.5M	\$41,228

** This figure is an average based on the amount of funding provided divided by the number of units mitigated.

Recent Actions:

- LAWA and the City of Inglewood are working together to improve productivity of the RSI Program. In addition to retaining a program management firm and undertaking an audit of the Program, the City will be issuing construction bids for over 900 units in the next seven months.

County of Los Angeles



County of Los Angeles Program Status: 1992-2012

Total Funding	Total Units Mitigated	To Be Mitigated	2011-2012 Funding	2011-2012 FAA Funding	2011-2012 LAWA Funding	Units Mitigated 2011-2012	2011-2012 Expenses	Average Cost/per unit *
\$113,825,000	2,399	3,801	\$31.7M	\$15M	\$16.7M	510	\$14.7M	\$28,992

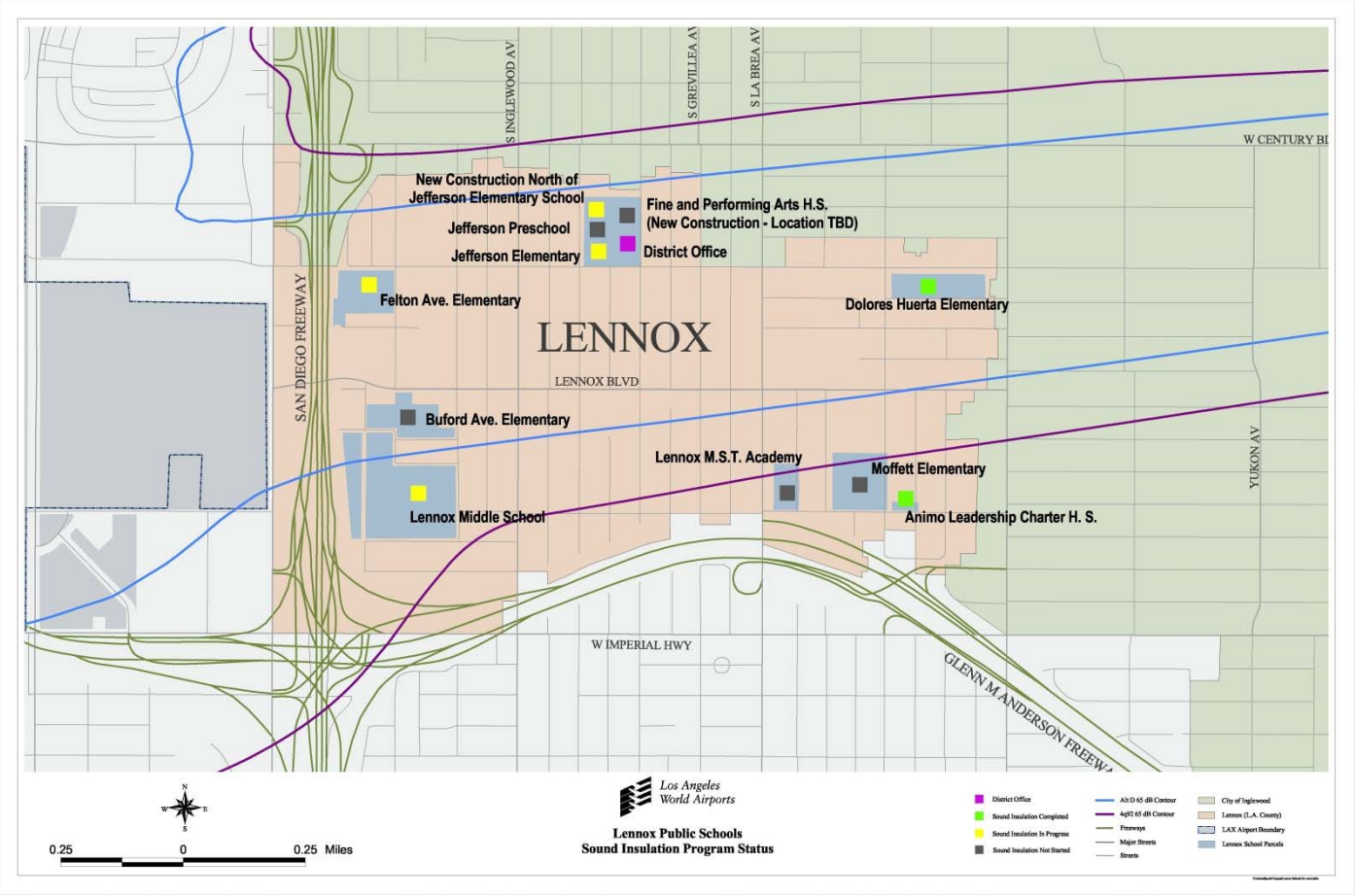
* Note: Per unit costs are averages based on the amount of expenditures divided by the number of units mitigated.

Recent Actions:

➔ \$9.22M in LAWA grant provided in November of 2012 for 391 units.

School Mitigation Programs

Lennox School Districts



School Mitigation Programs

Lennox School Districts

→ Per Settlement

11 Schools

→ Up to \$111,000,000

→ FAA has approved a PFC application for \$35 million

→ December 2010 \$1.2 Million

→ Huerta Middle School

→ December 2011 \$10 Million

→ 1st Year Program

→ Felton Elementary, Animo High School, Lennox Middle School, Jefferson Elementary and New school construction north of Jefferson Elementary

School Mitigation Programs

Inglewood Unified School Districts



School Mitigation Programs

Inglewood Unified School Districts

→ Per Settlement

- 10 Schools
- Up to \$118,000,000

→ No funding received to date

→ PFC application will be submitted to the FAA pending determination of inclusion of modular buildings. This determination is expected to occur at the end of the month.

Questions?

