

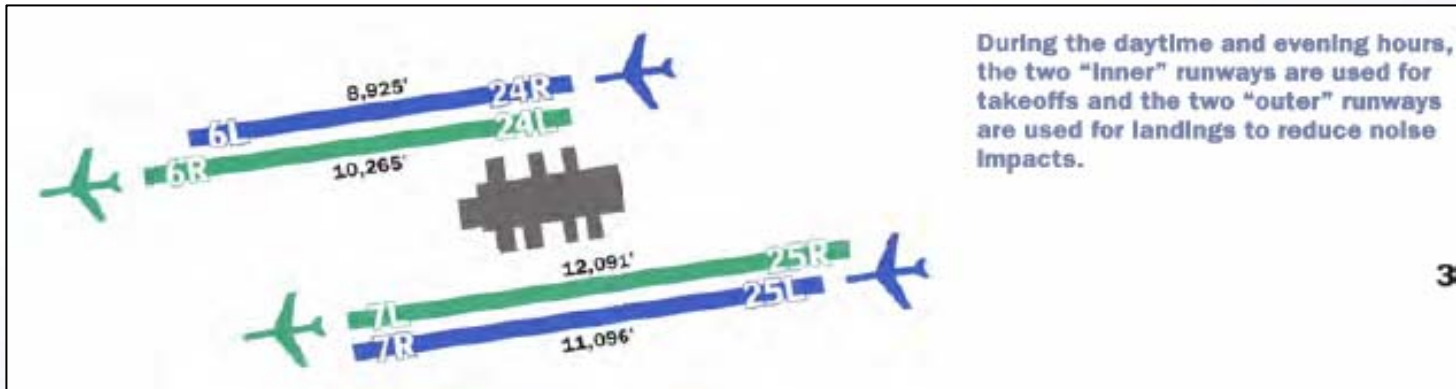


Statistical Update on LAX Runway Utilization

September 9, 2009

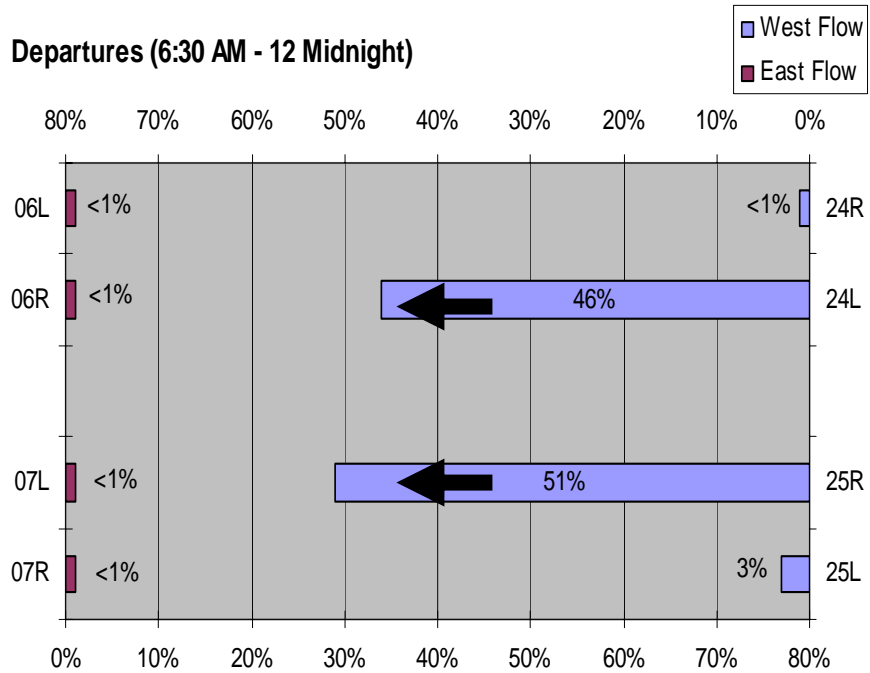
LAX/Community Noise Roundtable

August 2009 – Westerly Operations



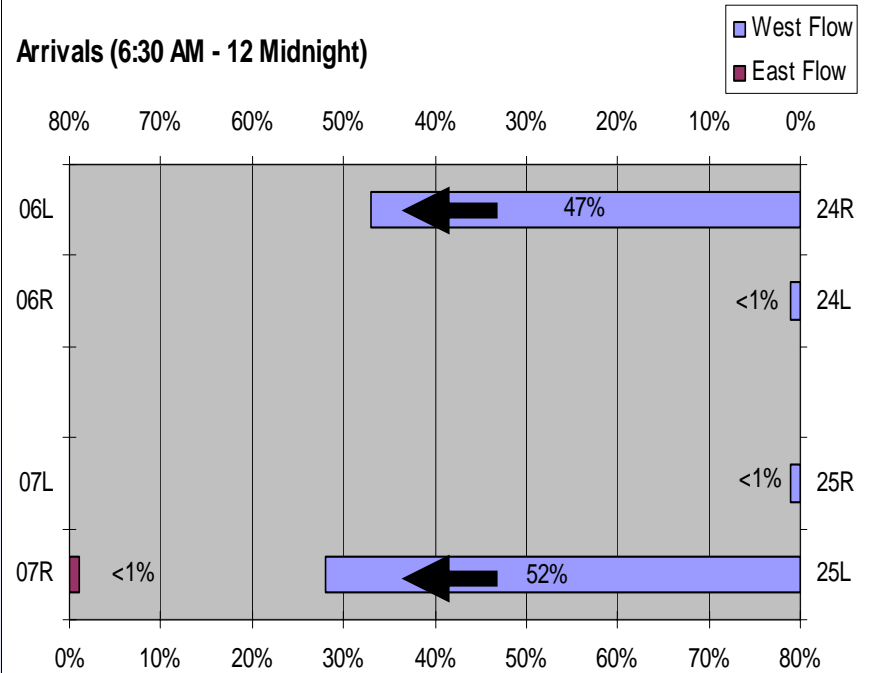
3

Departures (6:30 AM - 12 Midnight)

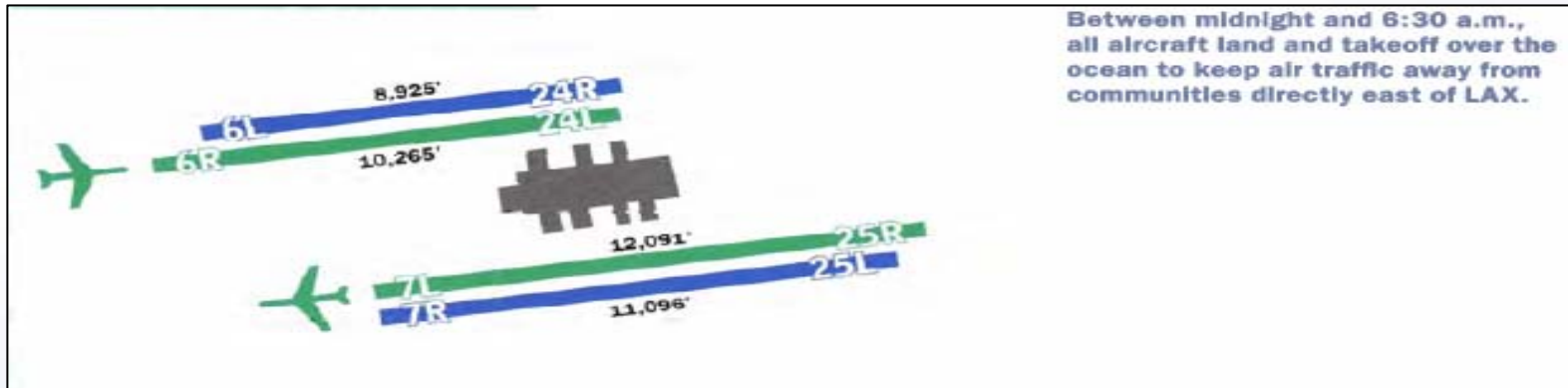


2

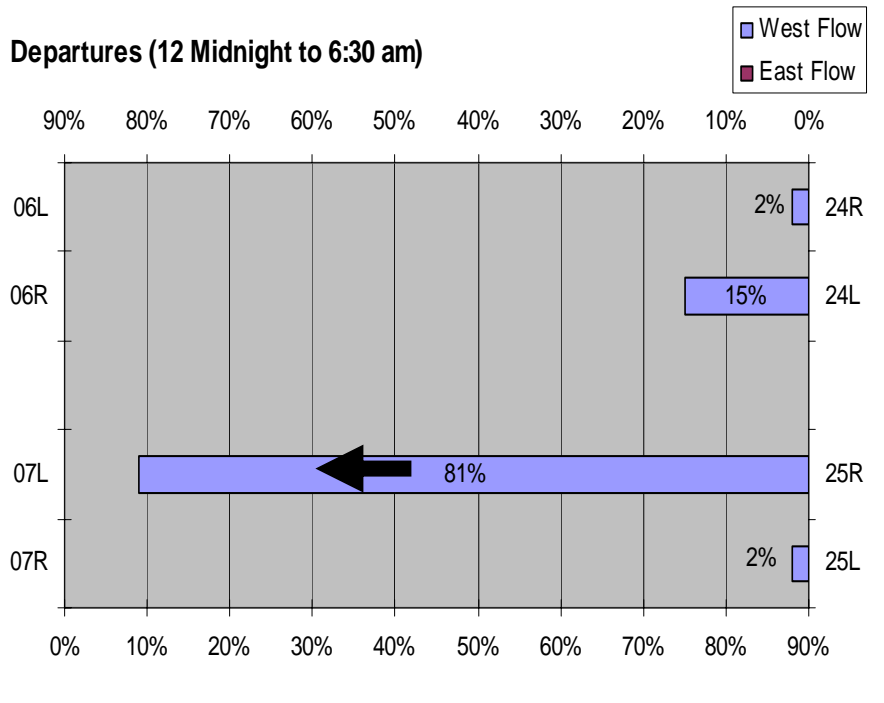
Arrivals (6:30 AM - 12 Midnight)



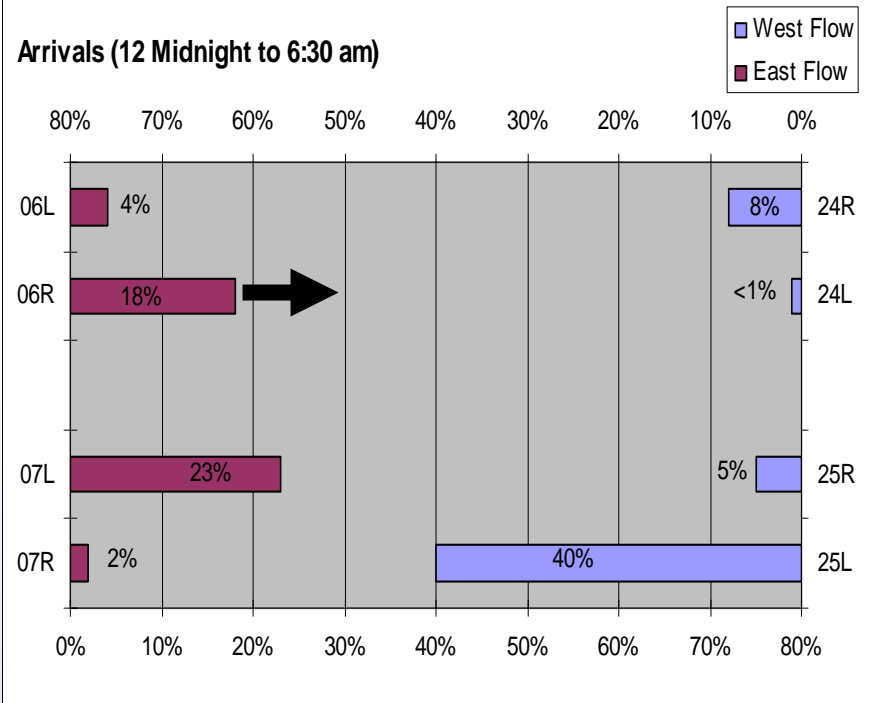
August 2009 – Over Ocean Operations



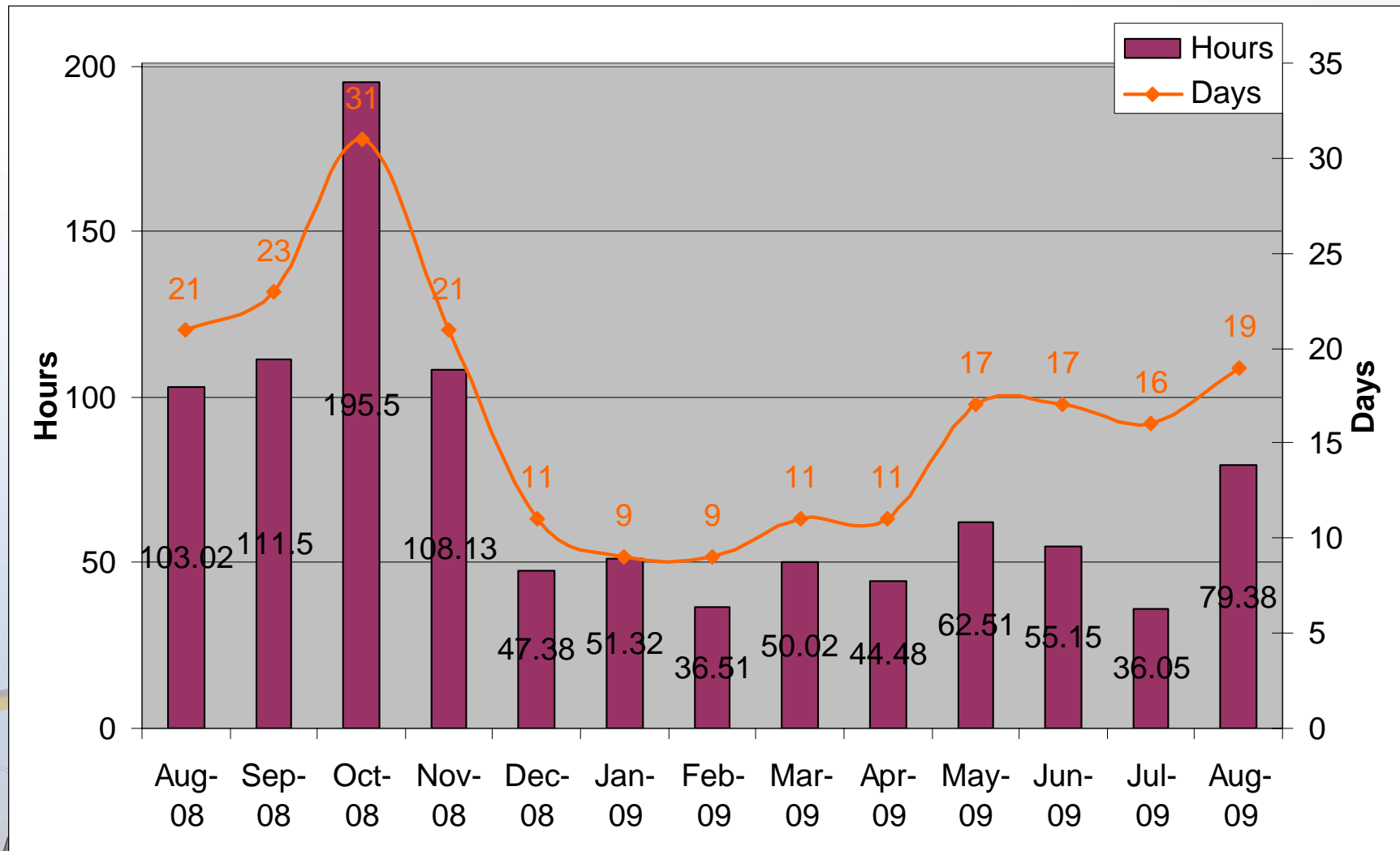
Departures (12 Midnight to 6:30 am)



Arrivals (12 Midnight to 6:30 am)



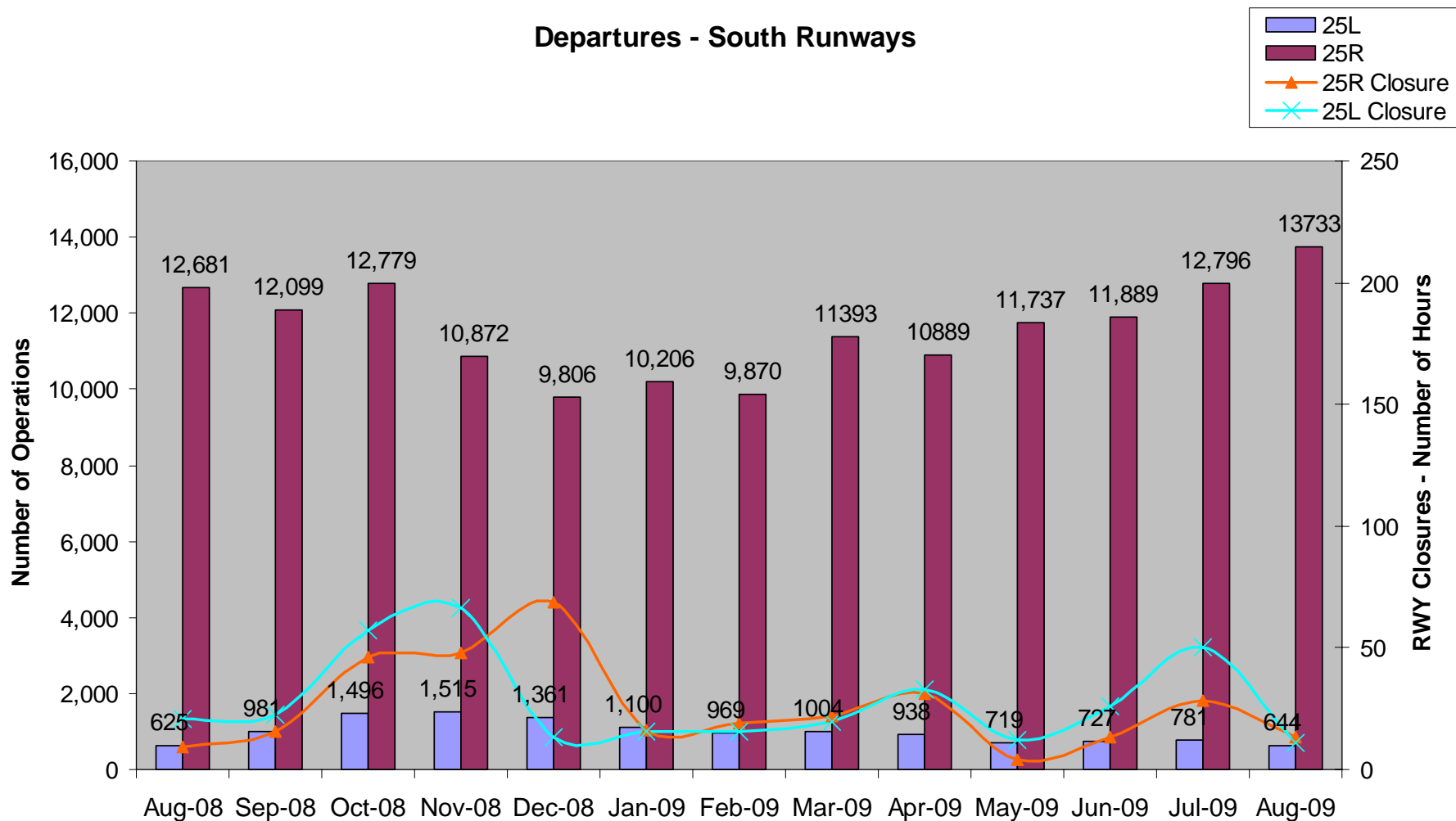
Deviation from Over-Ocean Operations 13-month period



Departures – Runways 25L and 25R

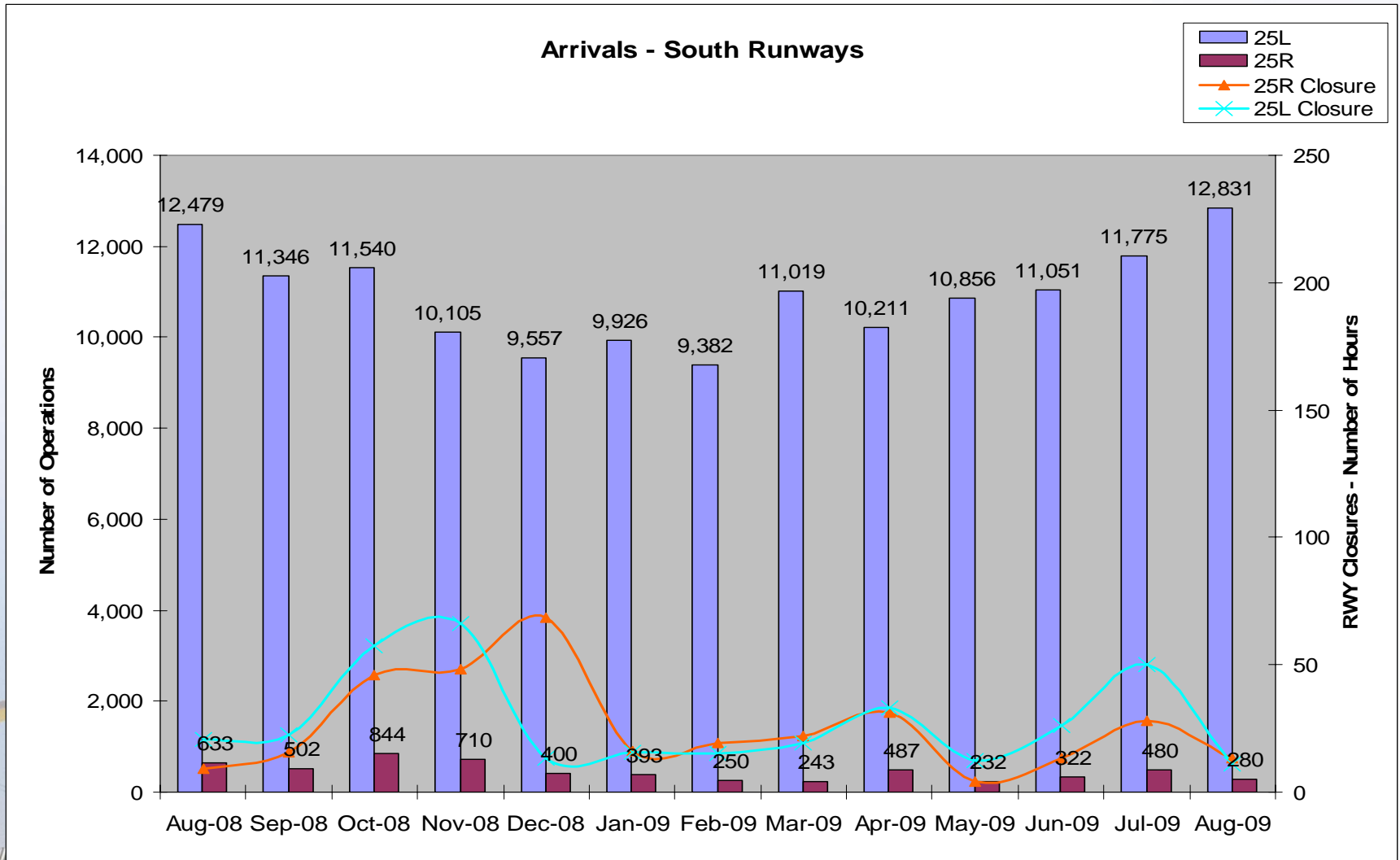
13-month period

Departures - South Runways



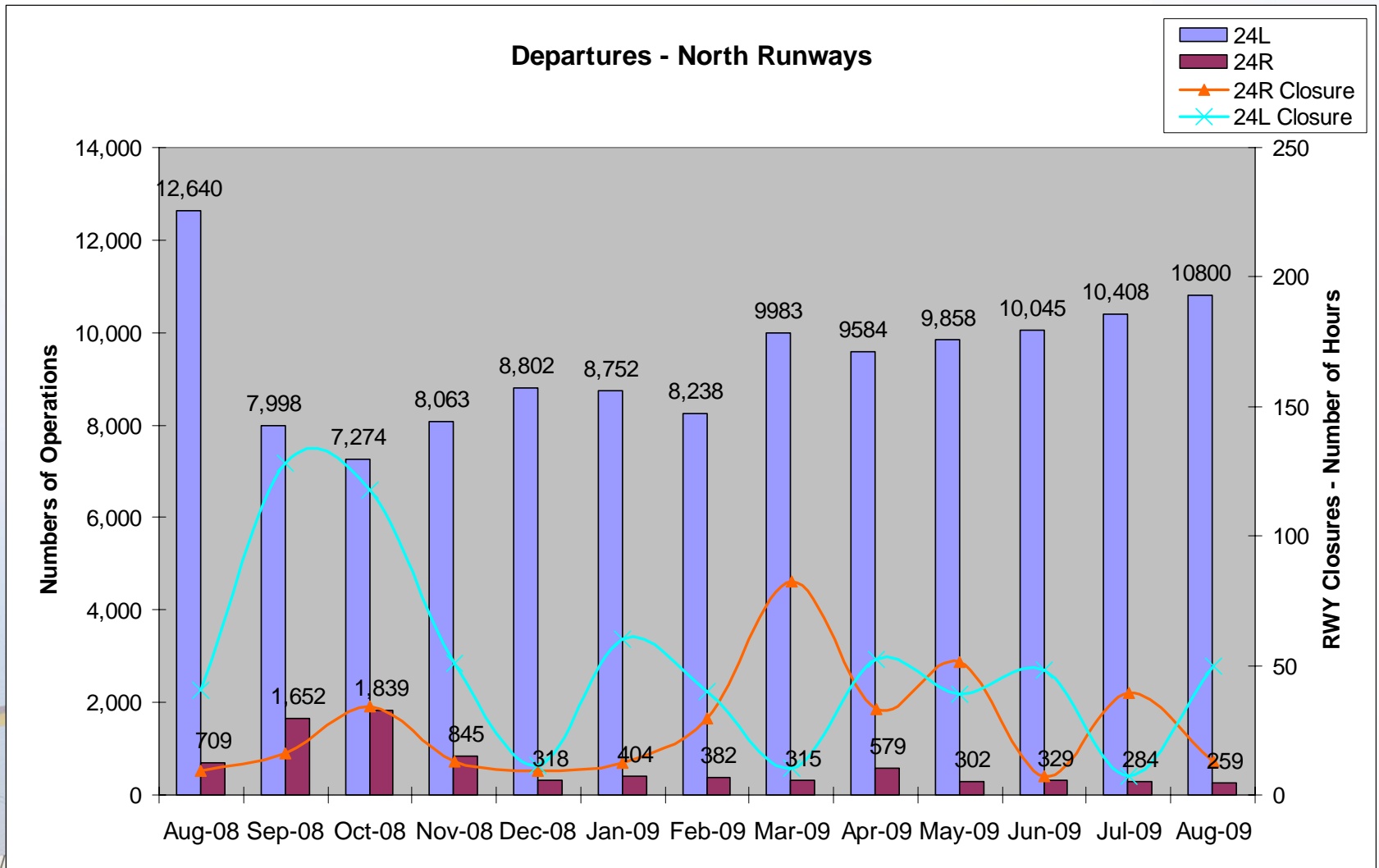
Arrivals – Runways 25L and 25R

13-month period



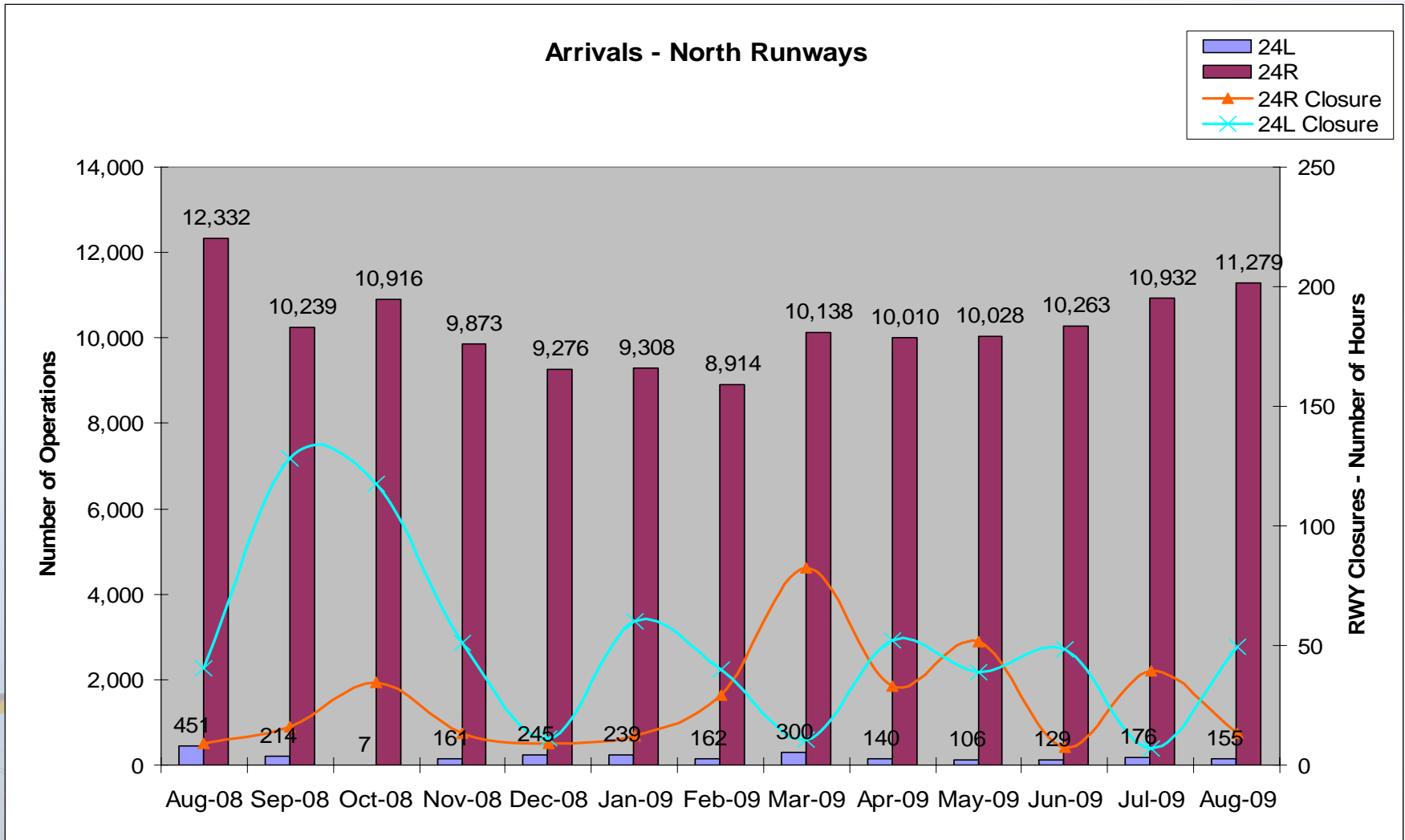
Departures – Runways 24L and 24R

13-month period



Arrivals – Runways 24L and 24R

13-month period



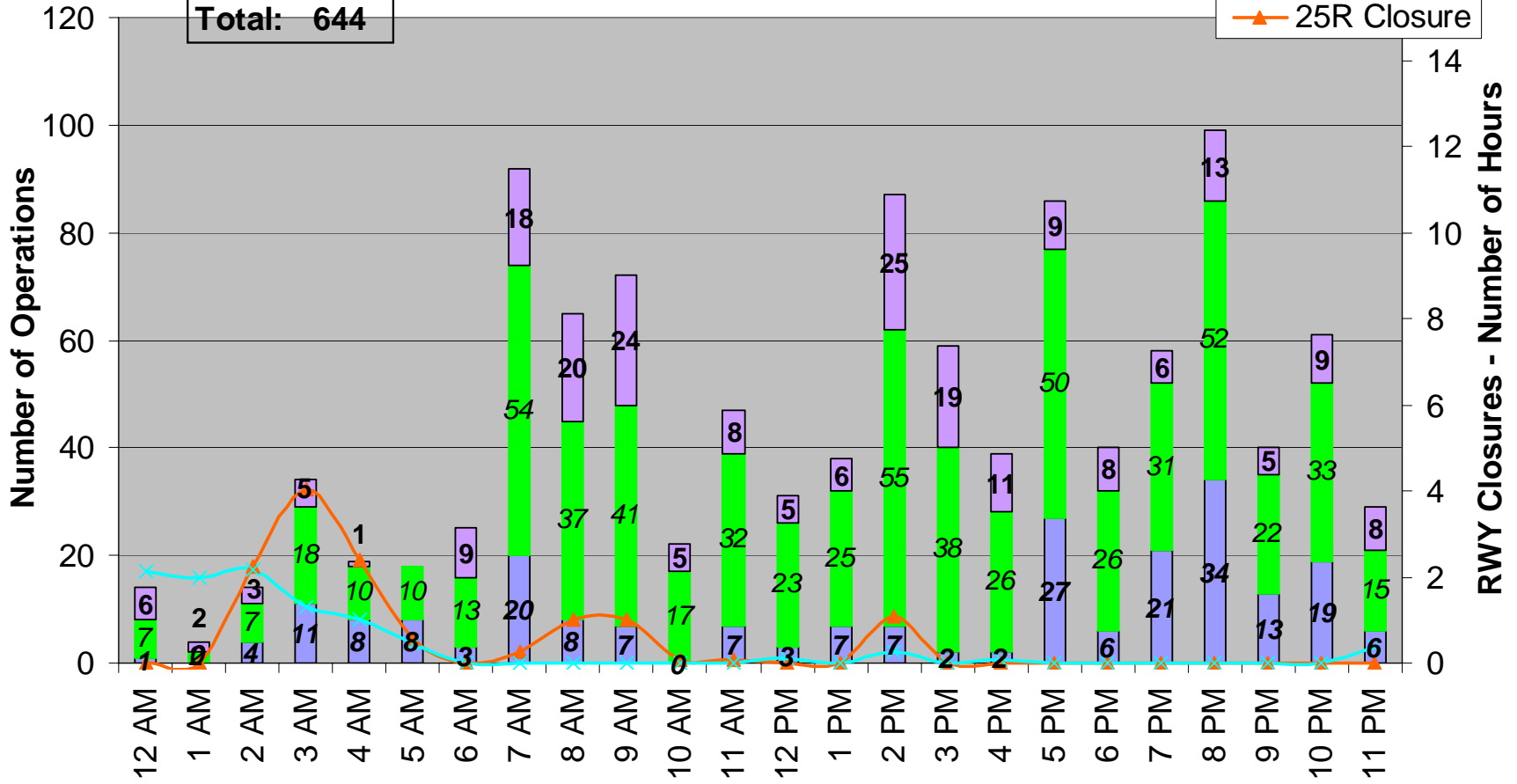
Time of Day by Operator on 25L

August 2009

Departures on 25L

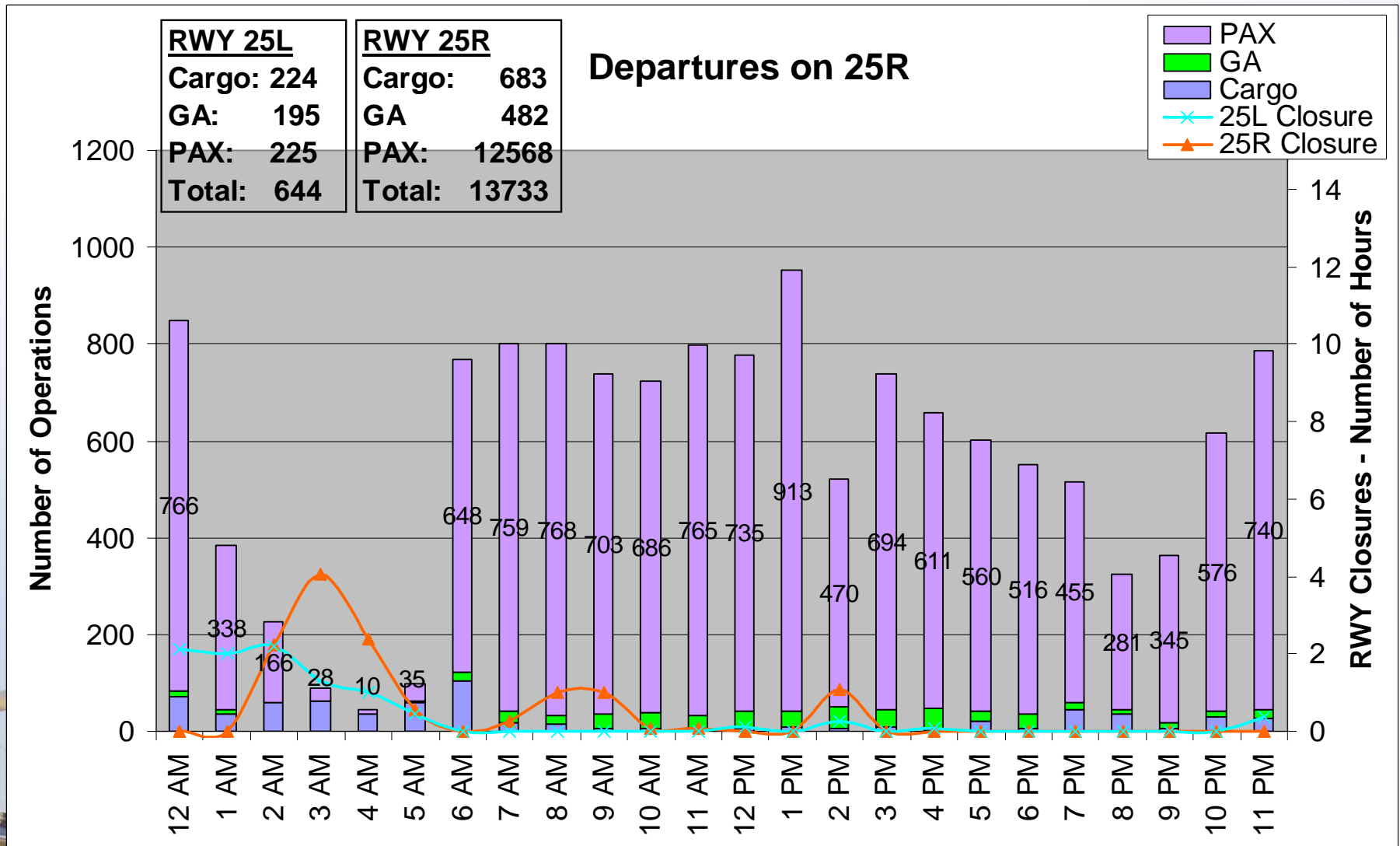
Cargo: 224
 GA: 195
 PAX: 225
 Total: 644

■ PAX
■ GA
■ Cargo
✕ 25L Closure
▲ 25R Closure



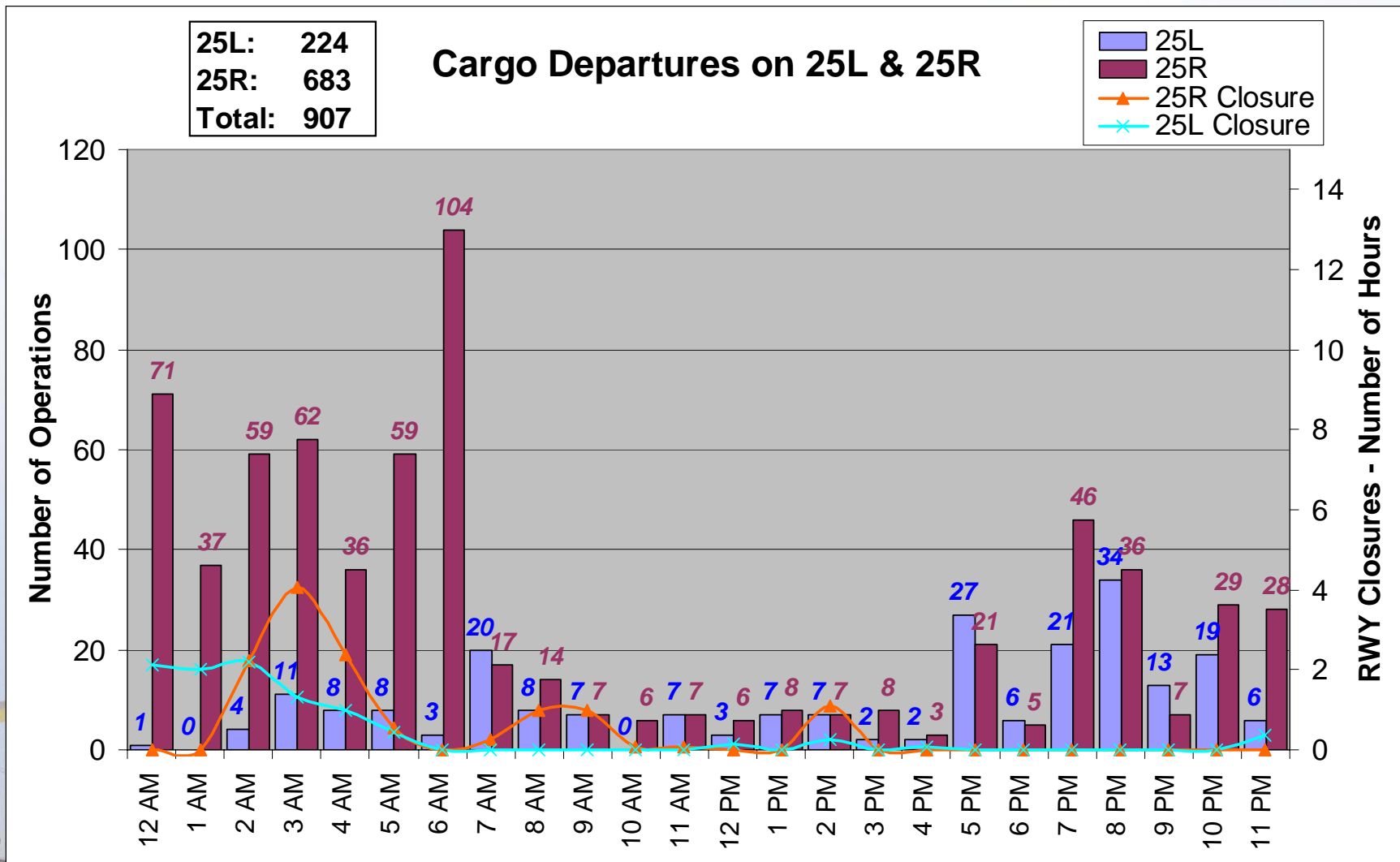
Time of Day by Operator on 25R

August 2009



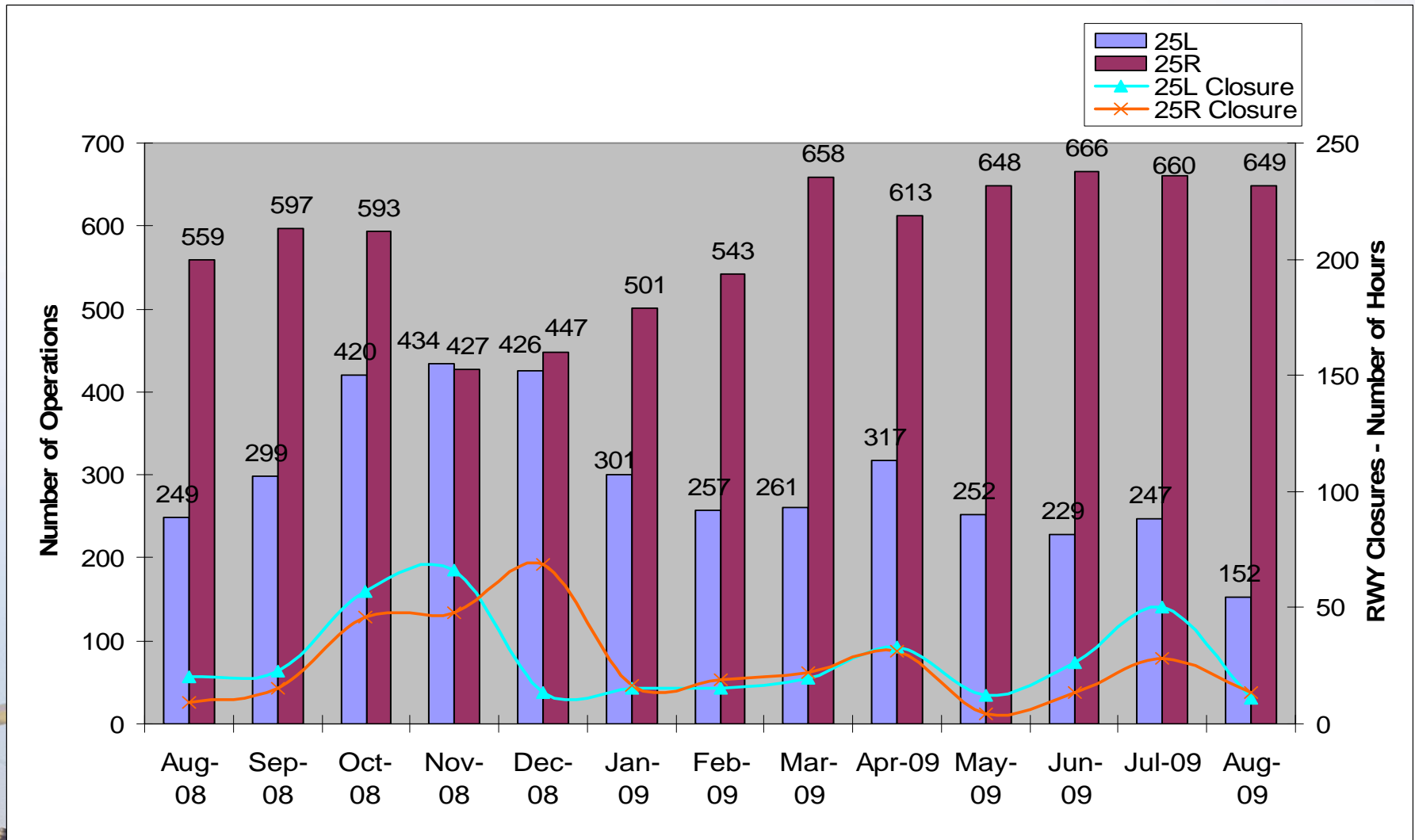
Time of Day – Cargo Only

August 2009

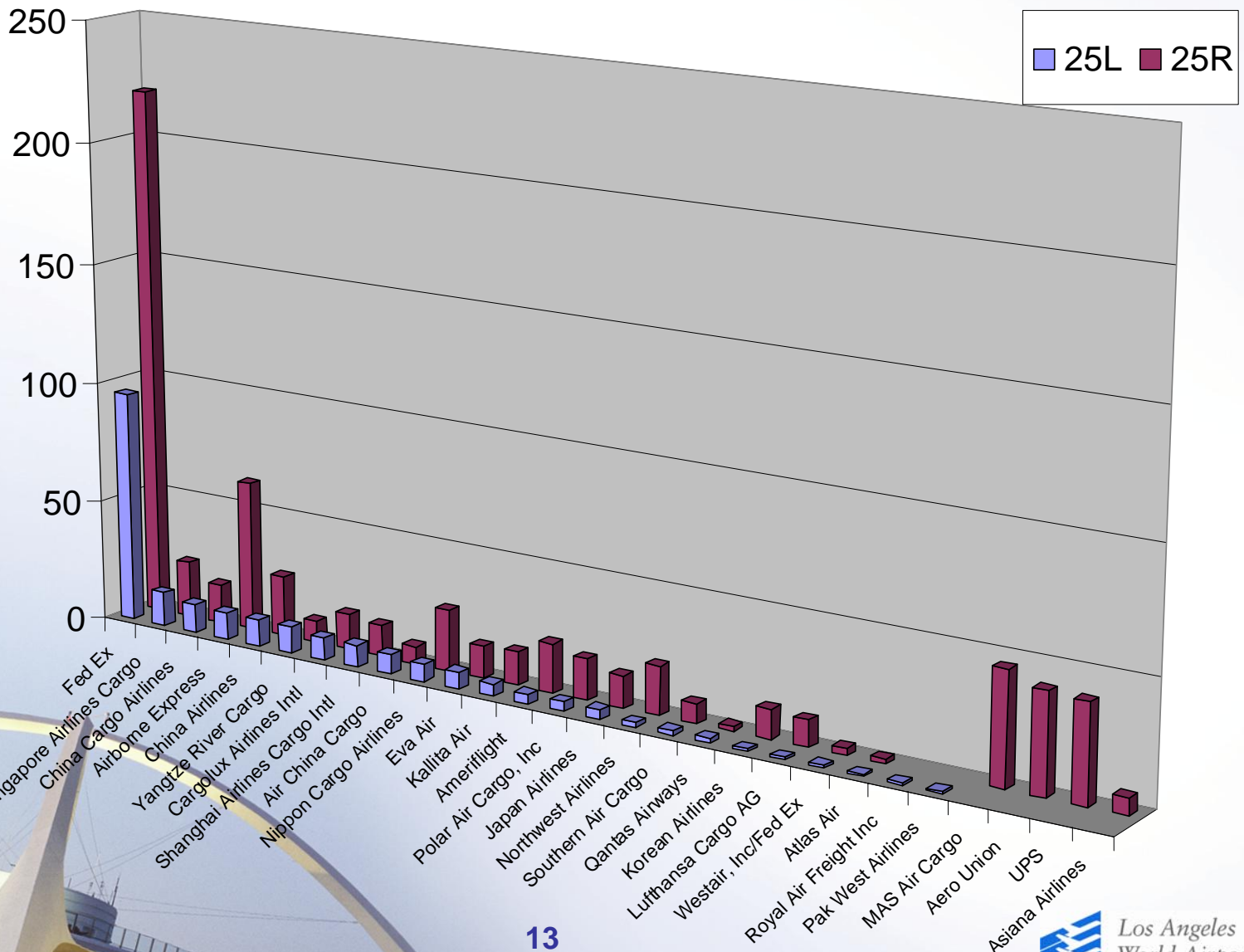


Cargo Departures on 25L & 25R

13-month period



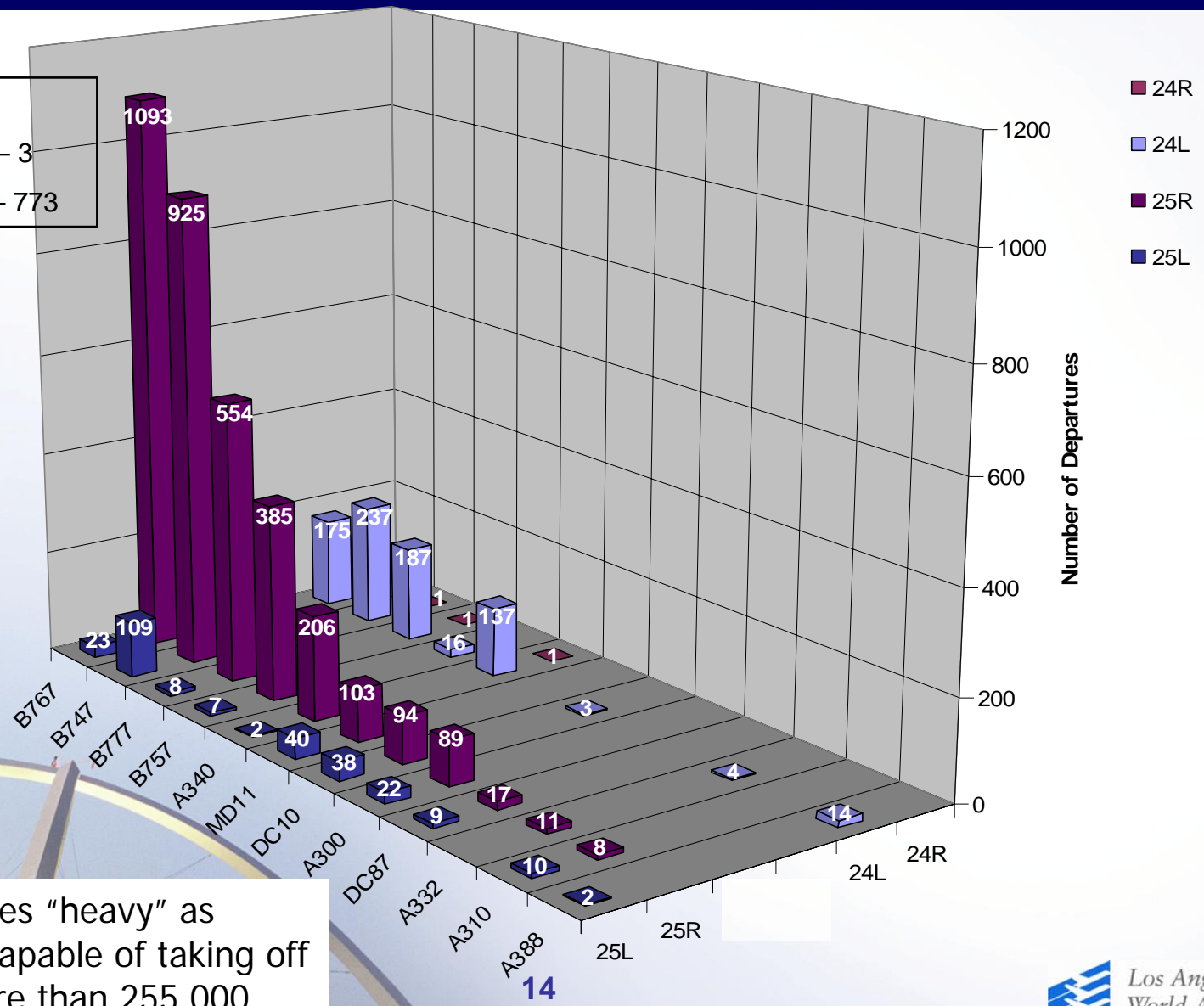
Air Cargo Departures on 25L & 25R August 2009



13

“Heavy” Aircraft Departure Operations August 2009

Total Count
 25L – 270 24R – 3
 25R – 3485 24L – 773



Note: FAA defines “heavy” as aircraft that is capable of taking off with weight more than 255,000 lbs.