

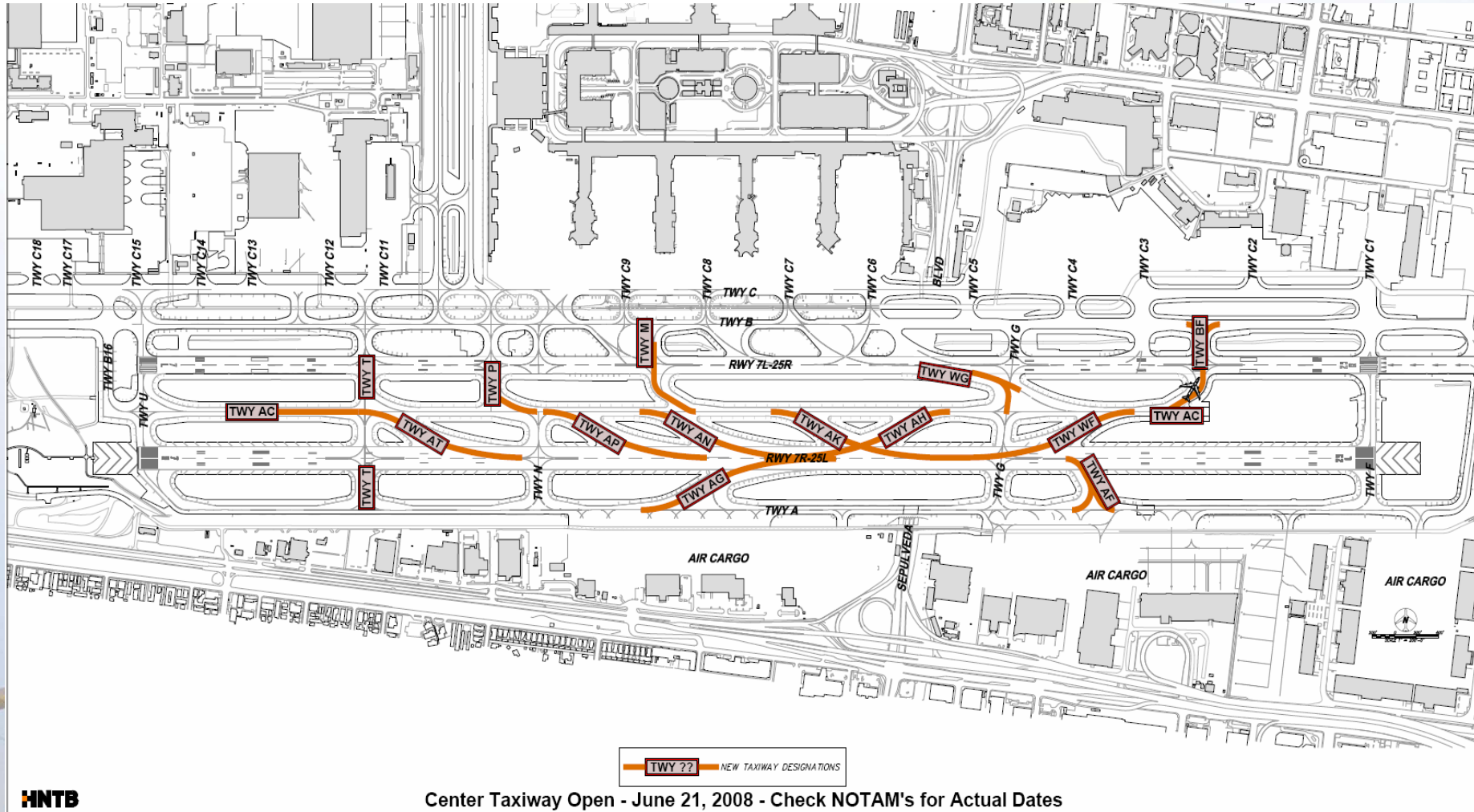


South Runway Utilization Analysis

September 10, 2008

LAX/Community Noise Roundtable

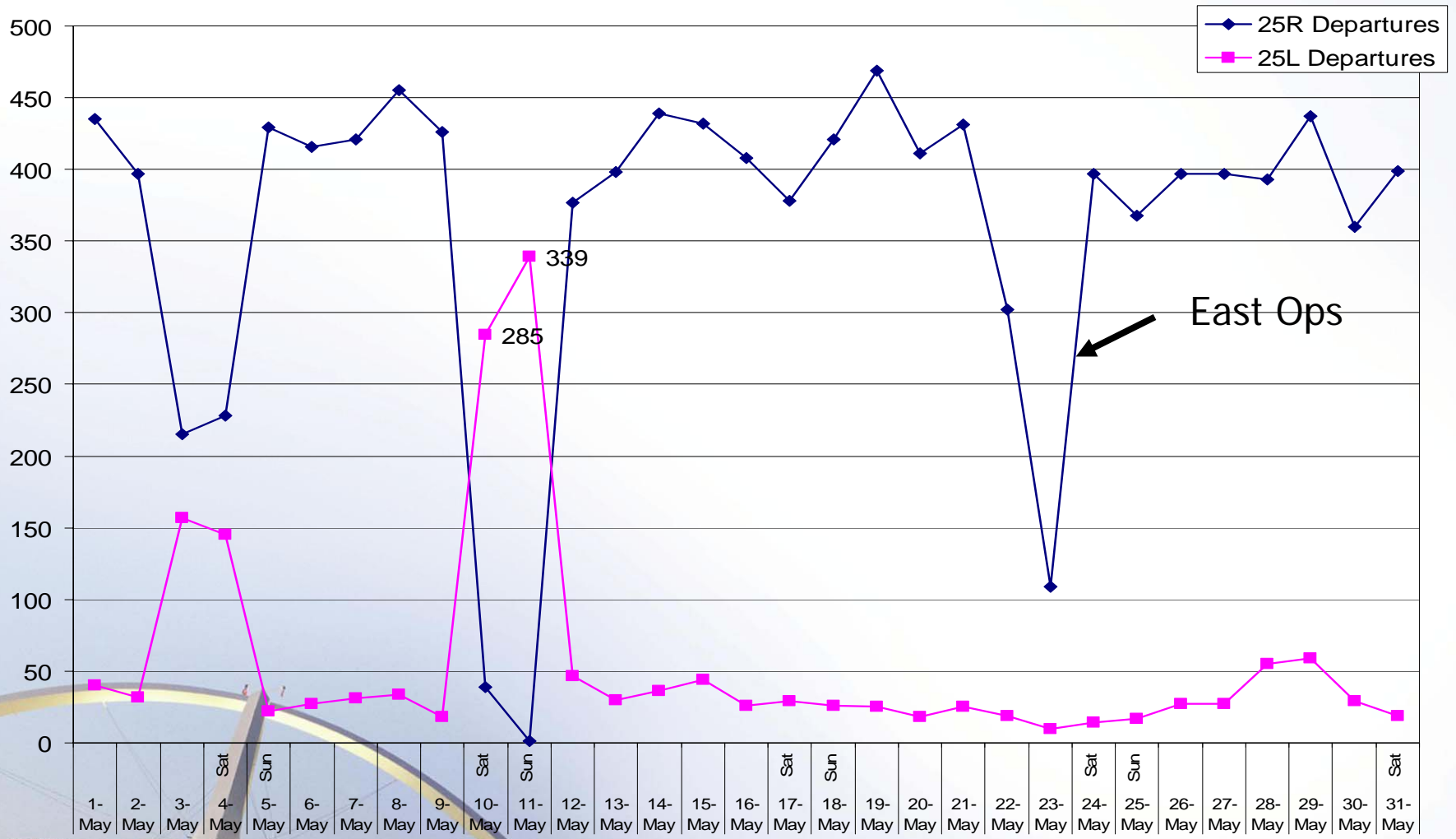
New Center Taxiway



Overview

- **Runway Utilization on 25L and 25R**
- **Operations by Air Cargo Carriers**
- **Early Turn Operations**

May 2008 South Runway Utilization



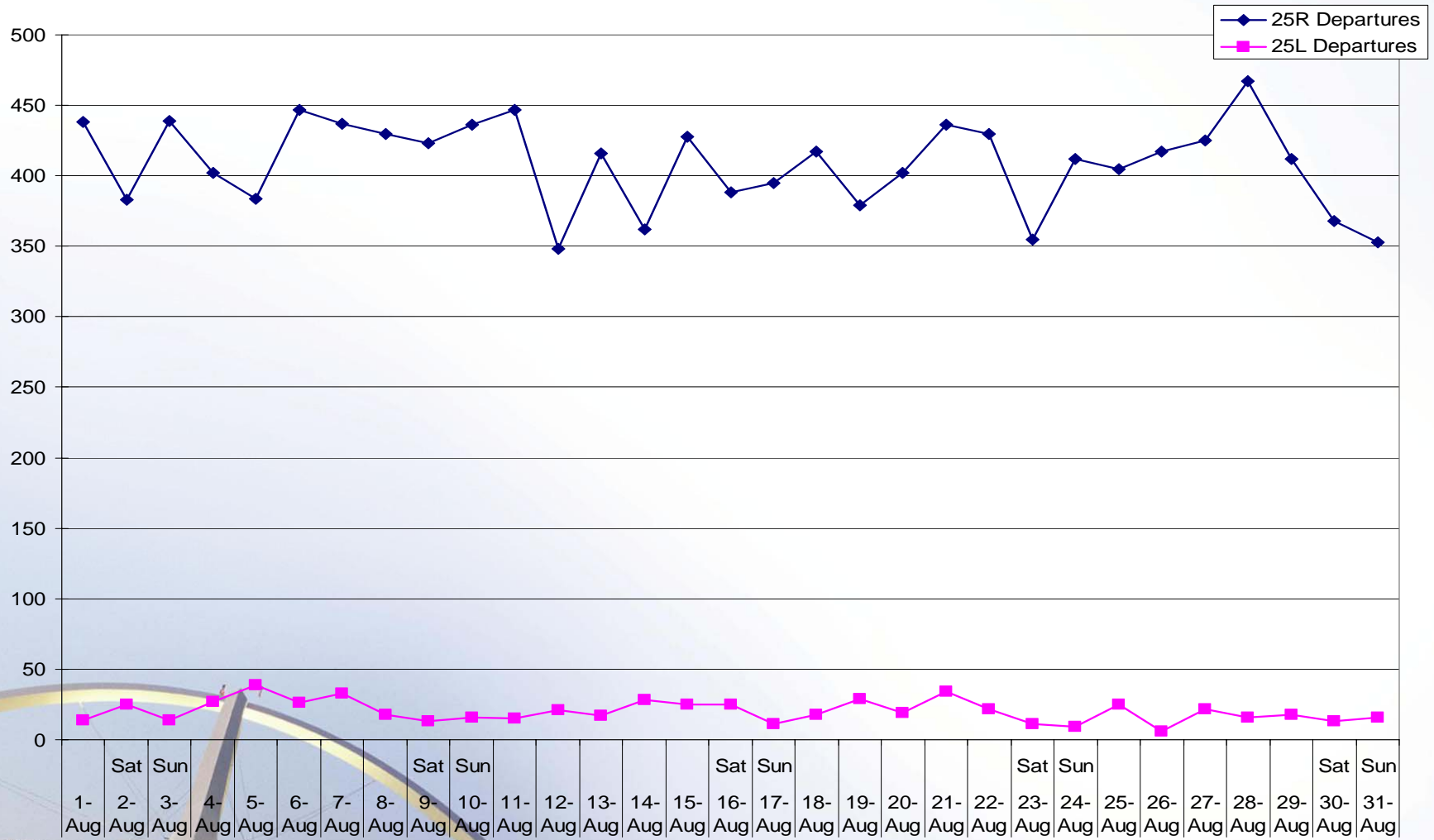
June 2008 South Runway Utilization



July 2008 South Runway Utilization



August 2008 South Runway Utilization



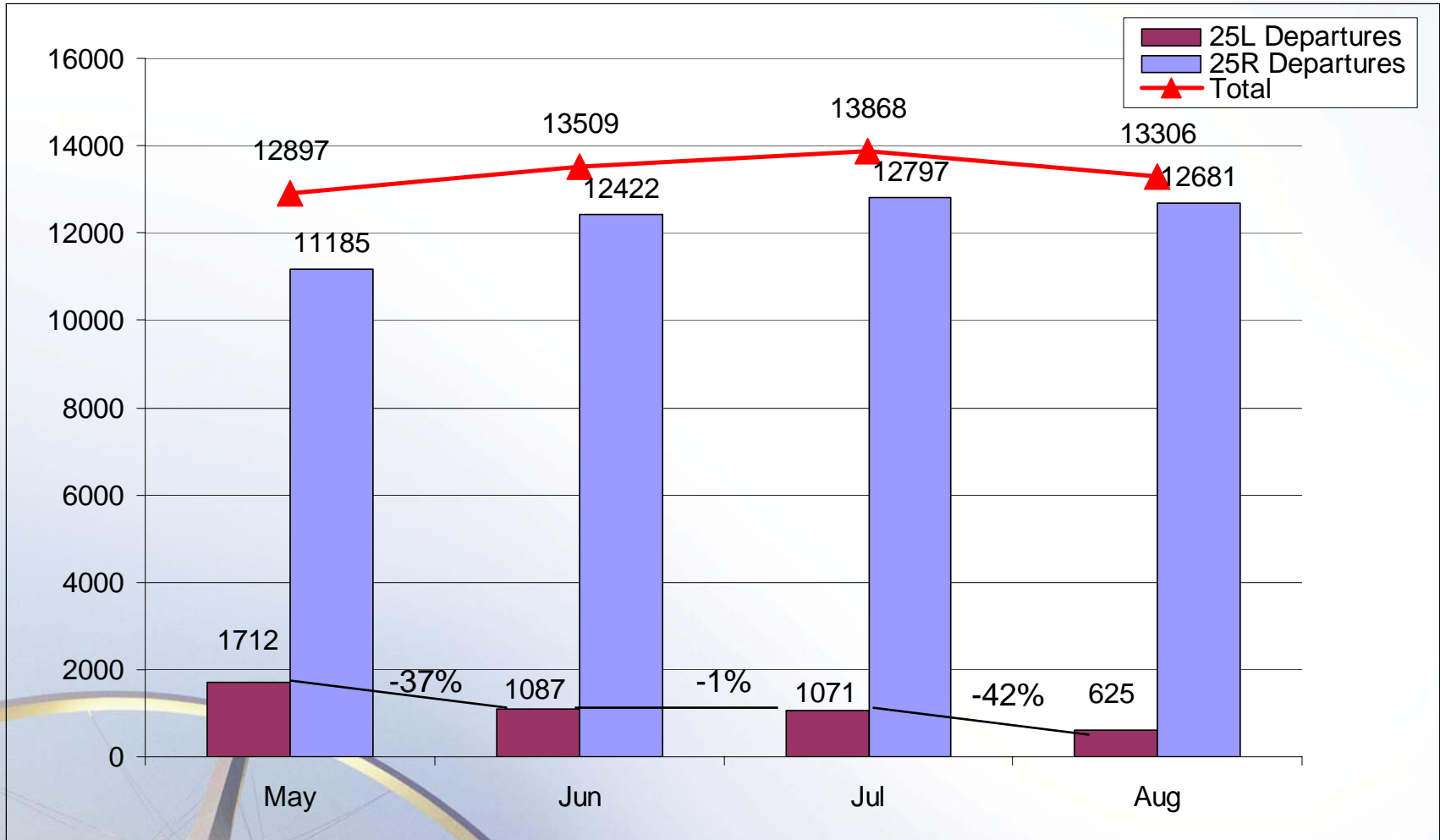
25R Weekend Closures Recap

Date	25L	25R	Total	Reason
May 3 rd & 4 th Fri & Sat	302	443	745	Partial Closure 18-Hour - Taxiway
May 10 th & 11 th Sat & Sun	624	40	664	Full Closure 52-Hour - Taxiway
June 21 st & 28 th Two Saturdays	304	517	821	Partial Closure 21-Hour Electrical Work
July 19 th & 20 th Sat & Sun	381	403	784	Partial Closure 25-Hour Concrete Repair

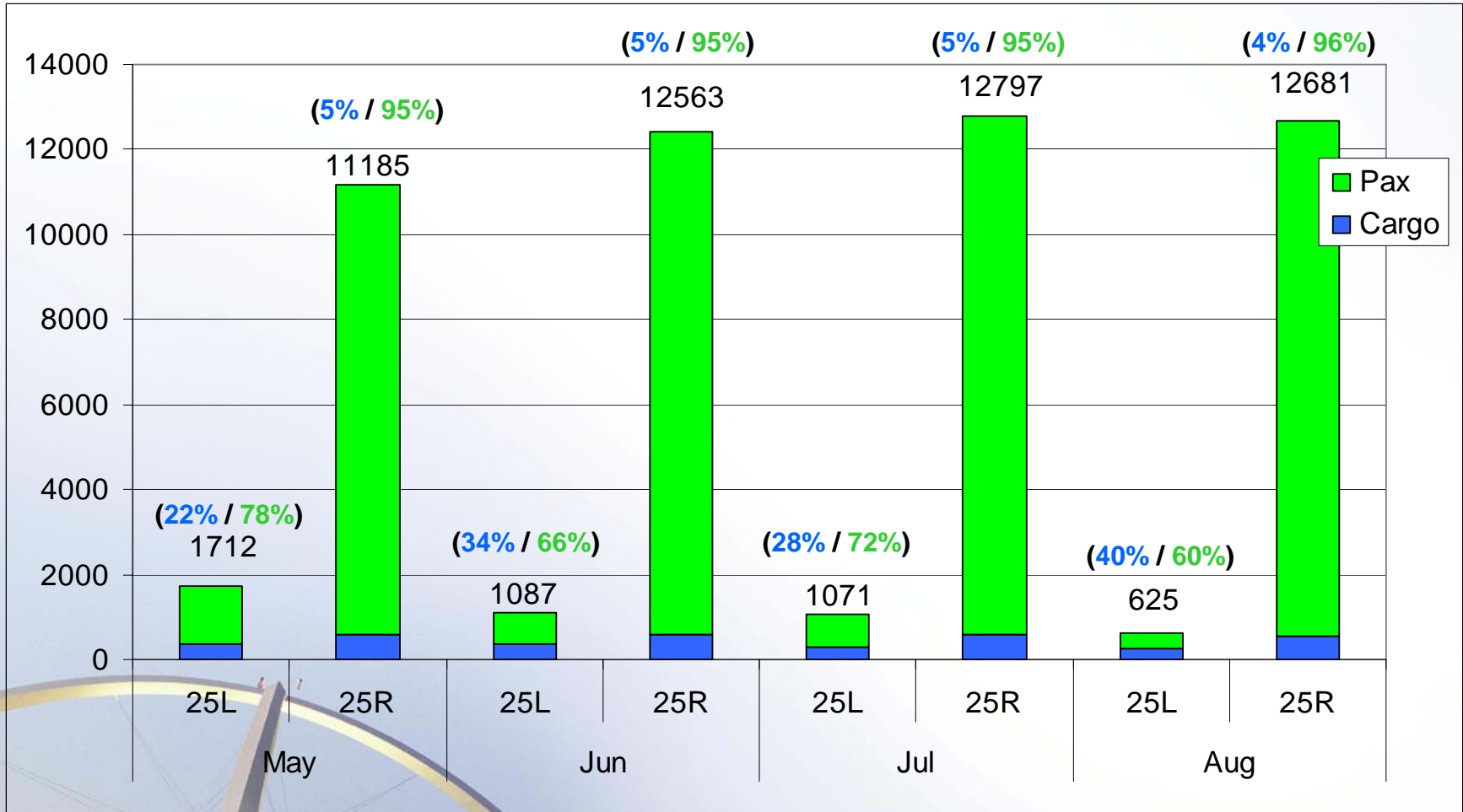
Daily Average Ops on Weekdays

Weekdays	25L	25R	Total
May	37	388	425
June	31	422	453
July	24	433	457
August	22	416	438

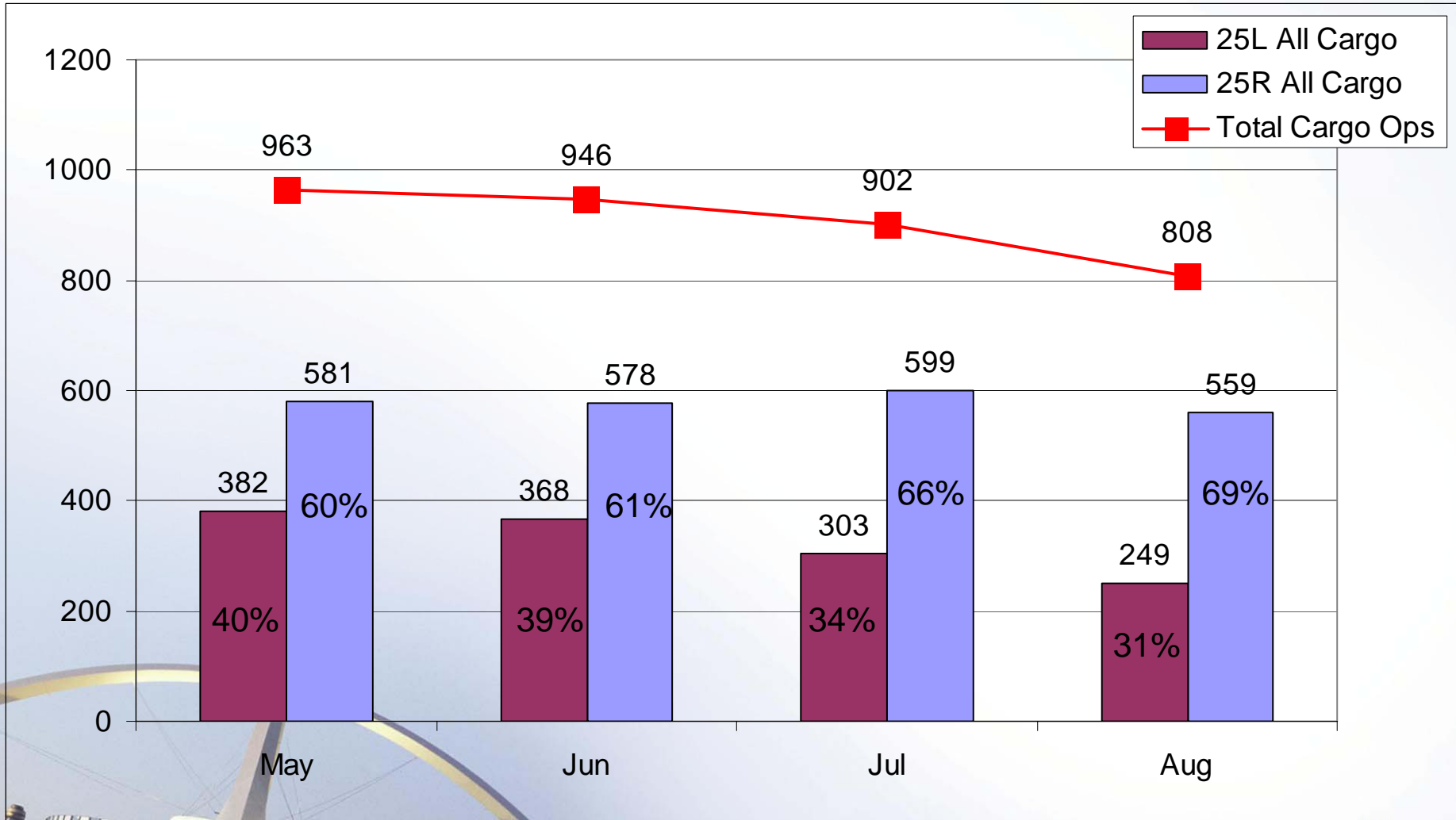
Runway Use Comparison



Passenger vs. Cargo



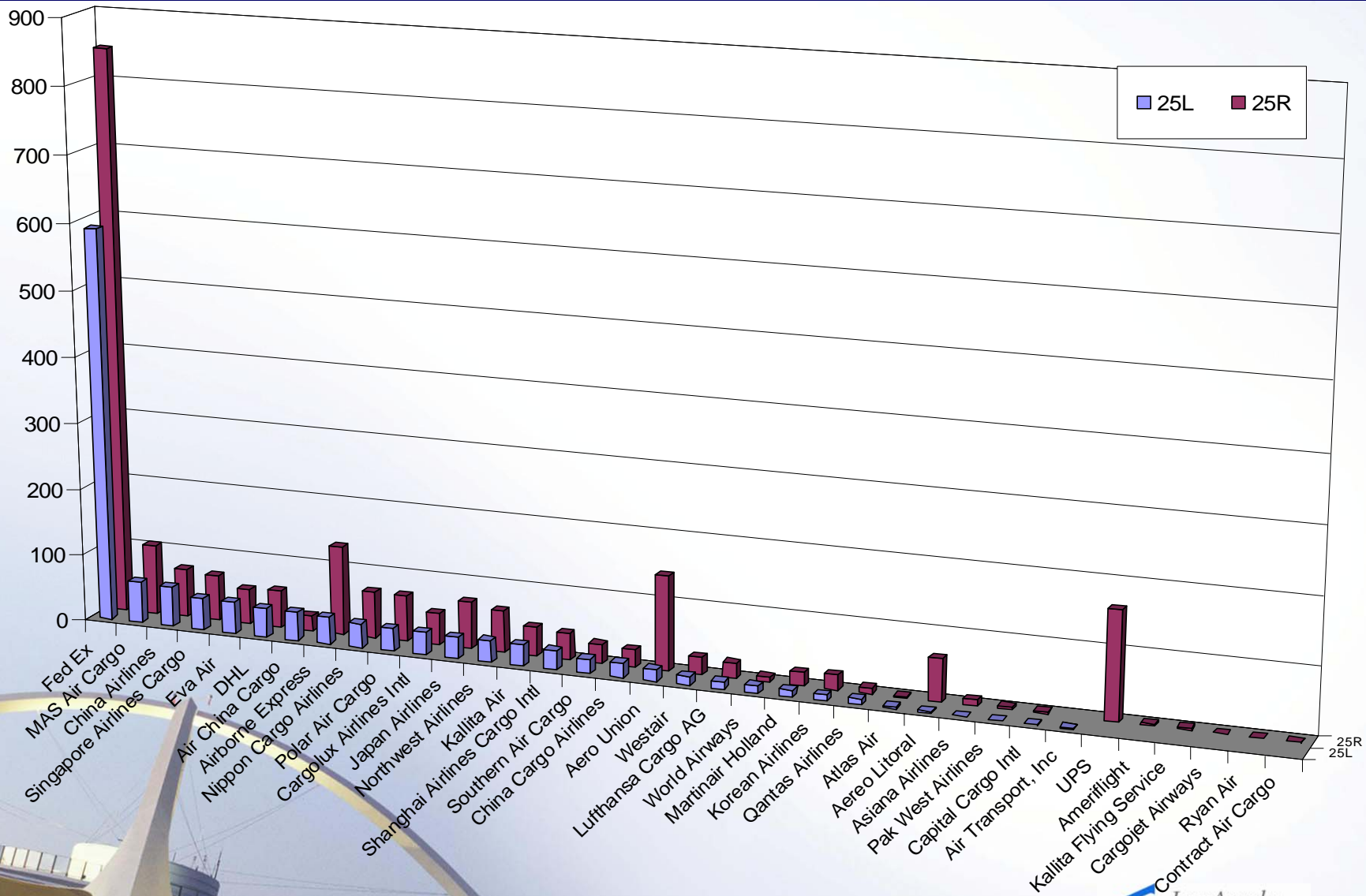
All Cargo Departure Operations



Air Cargo Ops – 4 Months Total

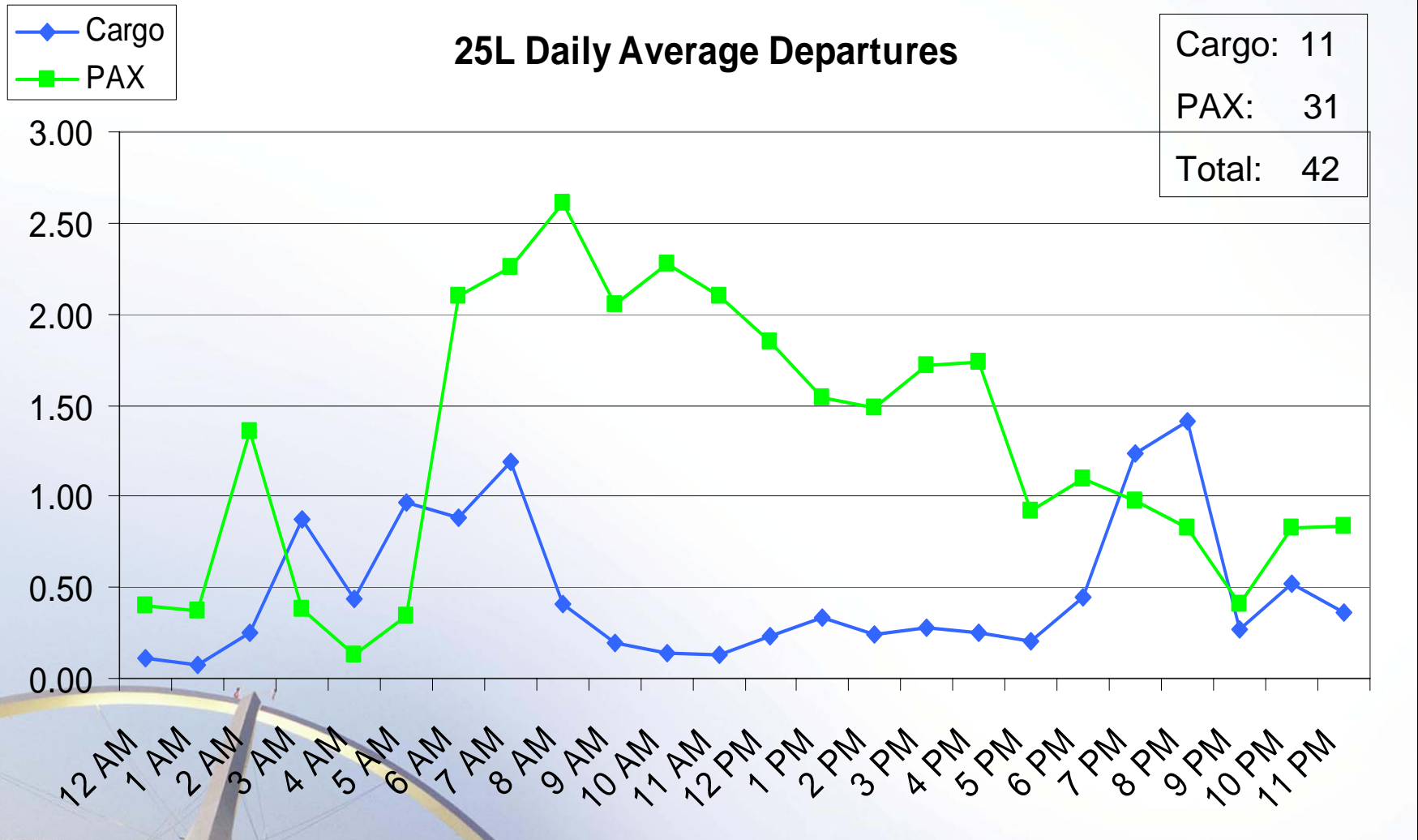
Cargo Carriers	25L	25R	Total	25L %	25R %
Fed Ex	591	846	1437	41%	59%
MAS Air Cargo	62	104	166	37%	63%
China Airlines	60	72	132	45%	55%
Singapore Airlines Cargo	48	68	116	41%	59%
Eva Air	47	52	99	47%	53%
DHL	44	55	99	44%	56%
Air China Cargo	43	23	66	65%	35%
Airborne Express	41	133	174	24%	76%
Nippon Cargo Airlines	36	70	106	34%	66%
Polar Air Cargo	35	70	105	33%	67%
Cargolux Airlines Intl	34	48	82	41%	59%
Japan Airlines	33	70	103	32%	68%
Northwest Airlines	33	62	95	35%	65%
Kallita Air	32	44	76	42%	58%
Shanghai Airlines Cargo Intl	29	39	68	43%	57%
Southern Air Cargo	22	29	51	43%	57%
China Cargo Airlines	22	26	48	46%	54%
Aero Union	18	142	160	11%	89%
Westair	13	26	39	33%	67%
Lufthansa Cargo AG	11	23	34	32%	68%
World Airways	11	8	19	58%	42%
Martinair Holland	10	21	31	32%	68%
Korean Airlines	9	23	32	28%	72%
Qantas Airlines	9	9	18	50%	50%
Atlas Air	3	2	5	60%	40%
Aereo Litoral	2	64	66	3%	97%
Asiana Airlines	1	9	10	10%	90%
Pak West Airlines	1	4	5	20%	80%
Capital Cargo Intl	1	3	4	25%	75%
Air Transport, Inc	1		1	100%	0%
UPS		162	162	0%	100%
Ameriflight		3	3	0%	100%
Kallita Flying Service		3	3	0%	100%
Cargojet Airways		1	1	0%	100%
Ryan Air		1	1	0%	100%
Contract Air Cargo		1	1	0%	100%
Grand Total	1302	2316	3618	36%	64%

Air Cargo – 4 Months Total

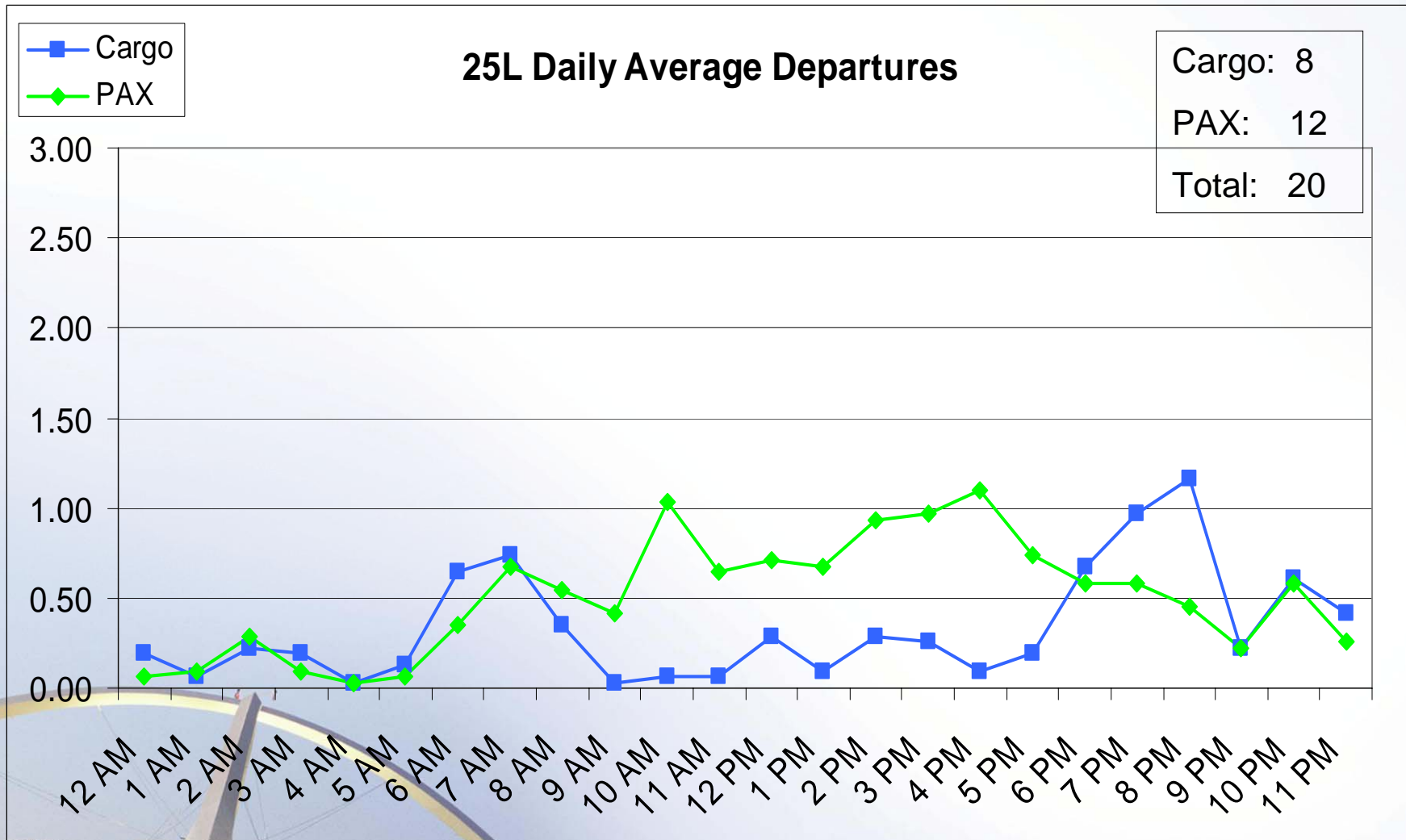


25L Time of Day – May to July Timeframe

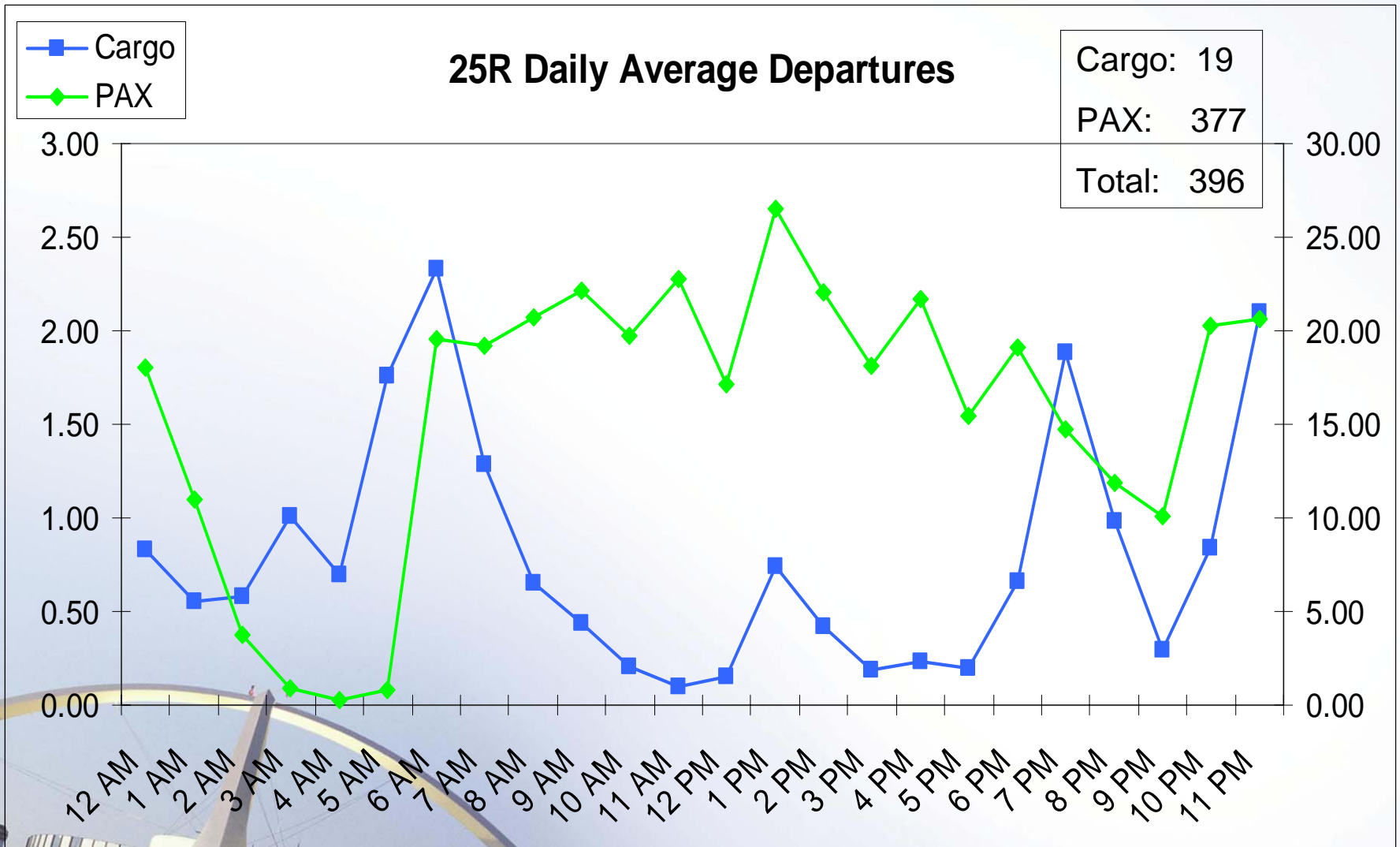
25L Daily Average Departures



25L Time of Day – August

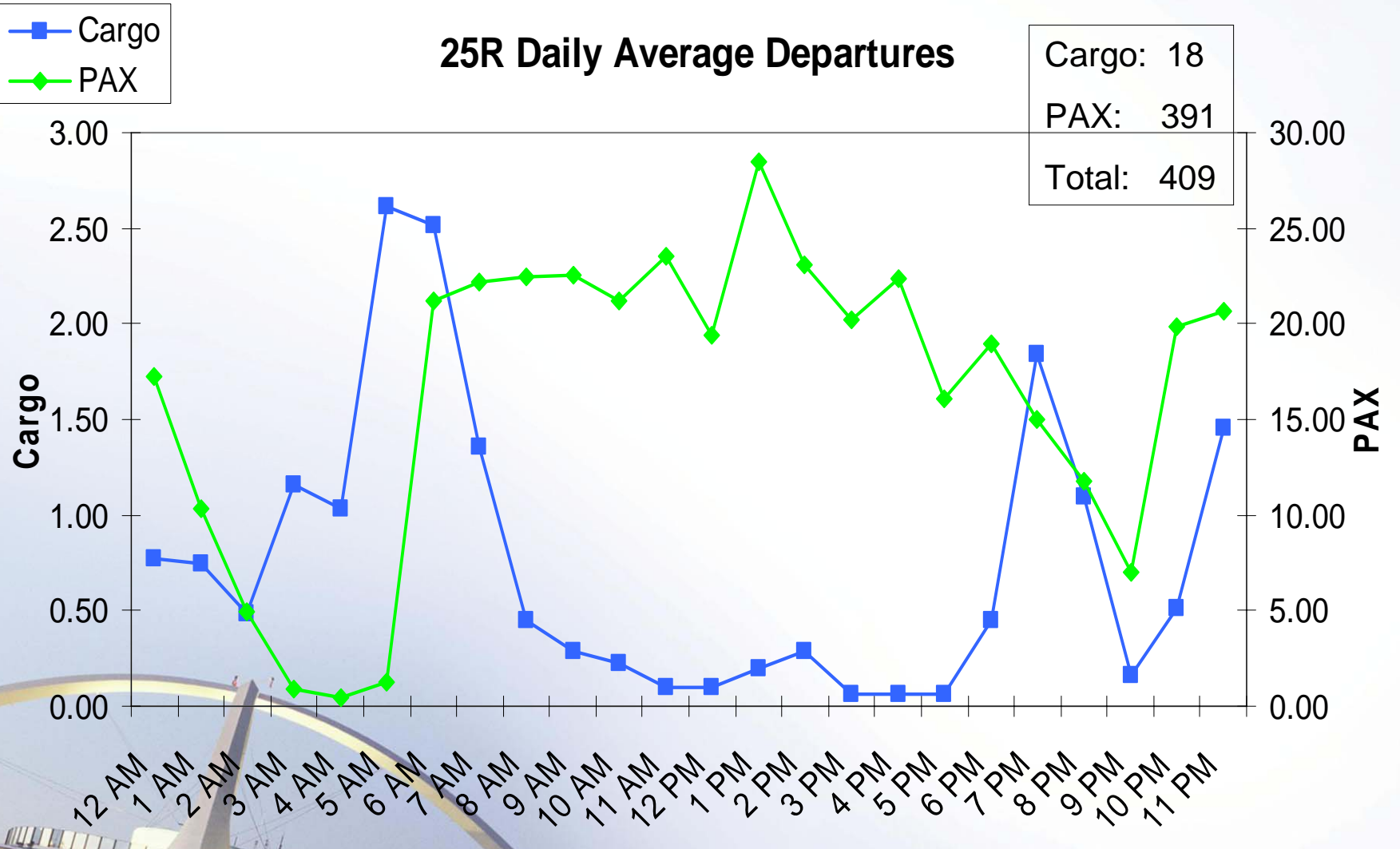


25R Time of Day – May to July Timeframe

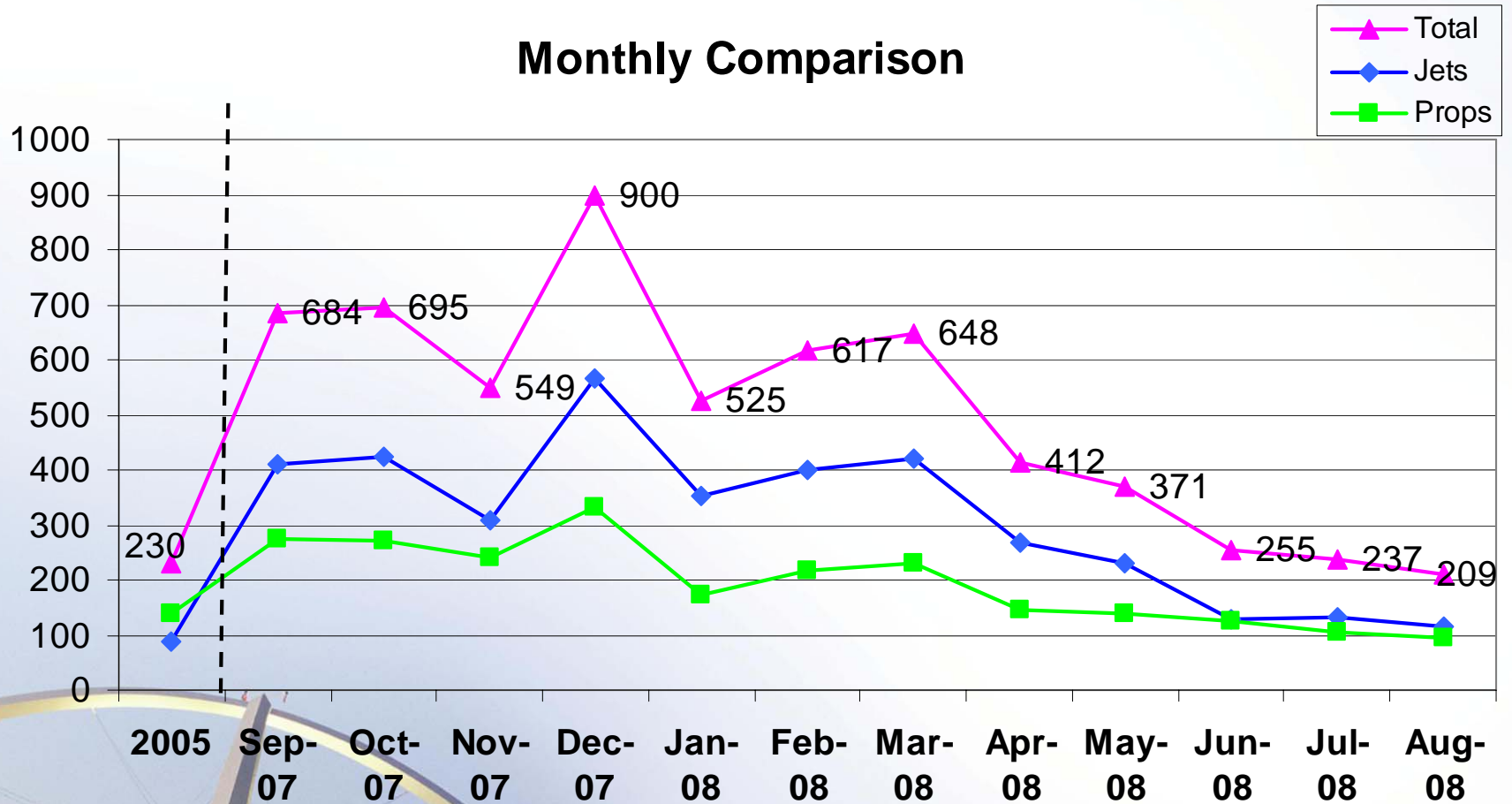


25R Time of Day – August

25R Daily Average Departures

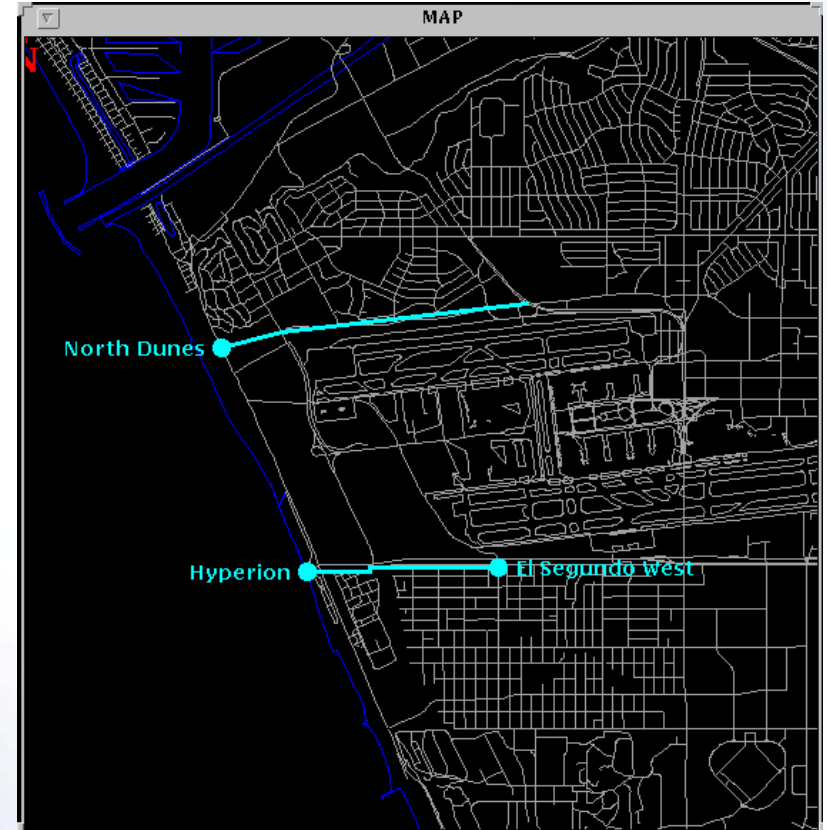


South Early Turn Comparison



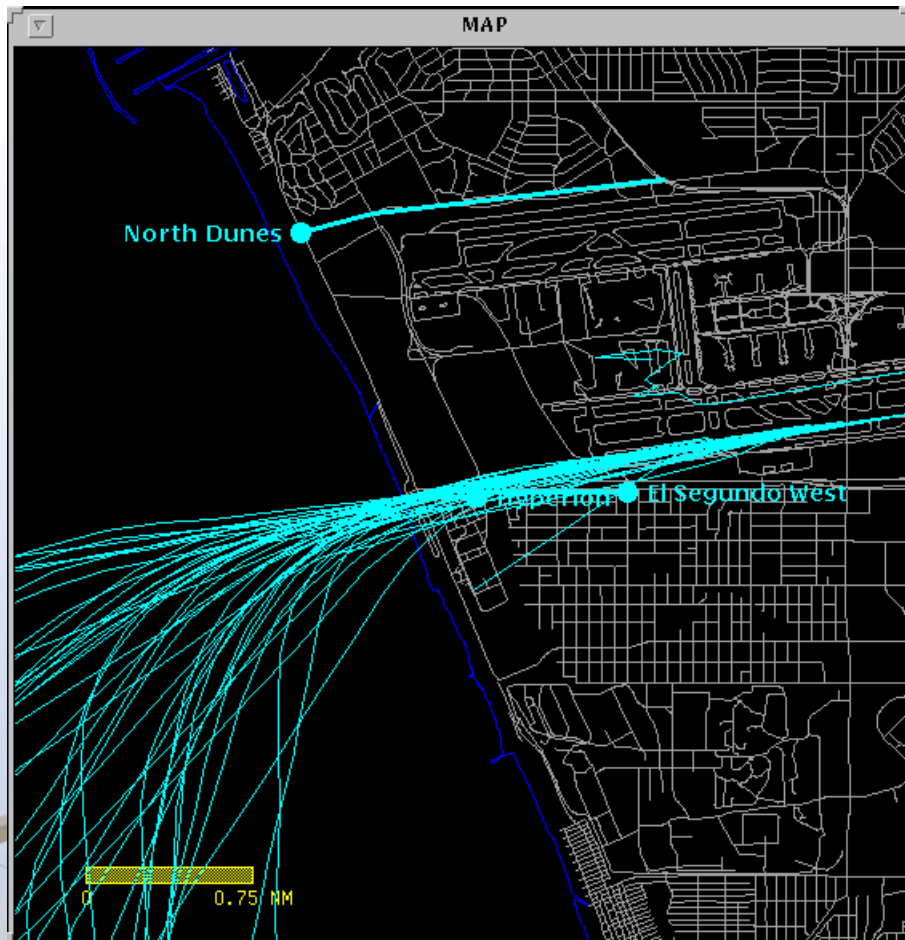
South Early Turn Comparison

	Gate	25L	25R	Total
May	ES	28	10	371
	H	204	129	
June	ES	24	27	255
	H	89	115	
July	ES	20	25	237
	H	79	113	
Aug	ES	10	32	209
	H	64	103	

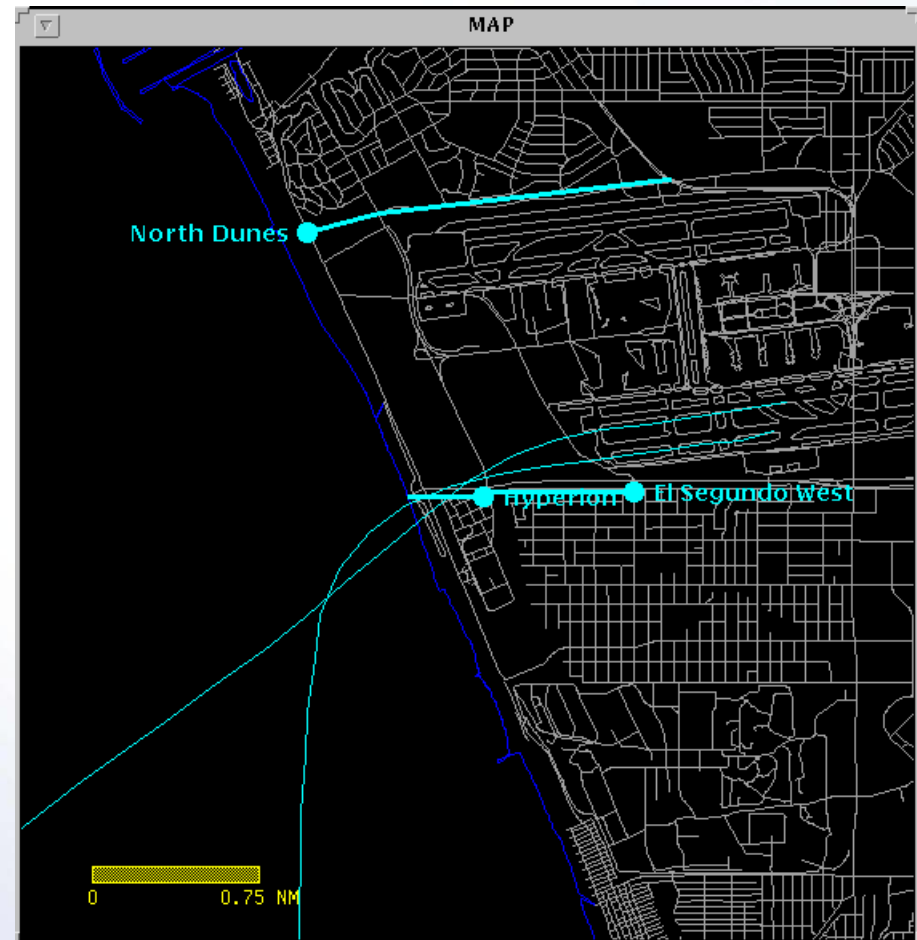


Sample Early Turns

5/10 Saturday



8/31 Sunday



A380 Noise Comparison on Arrivals at LAX

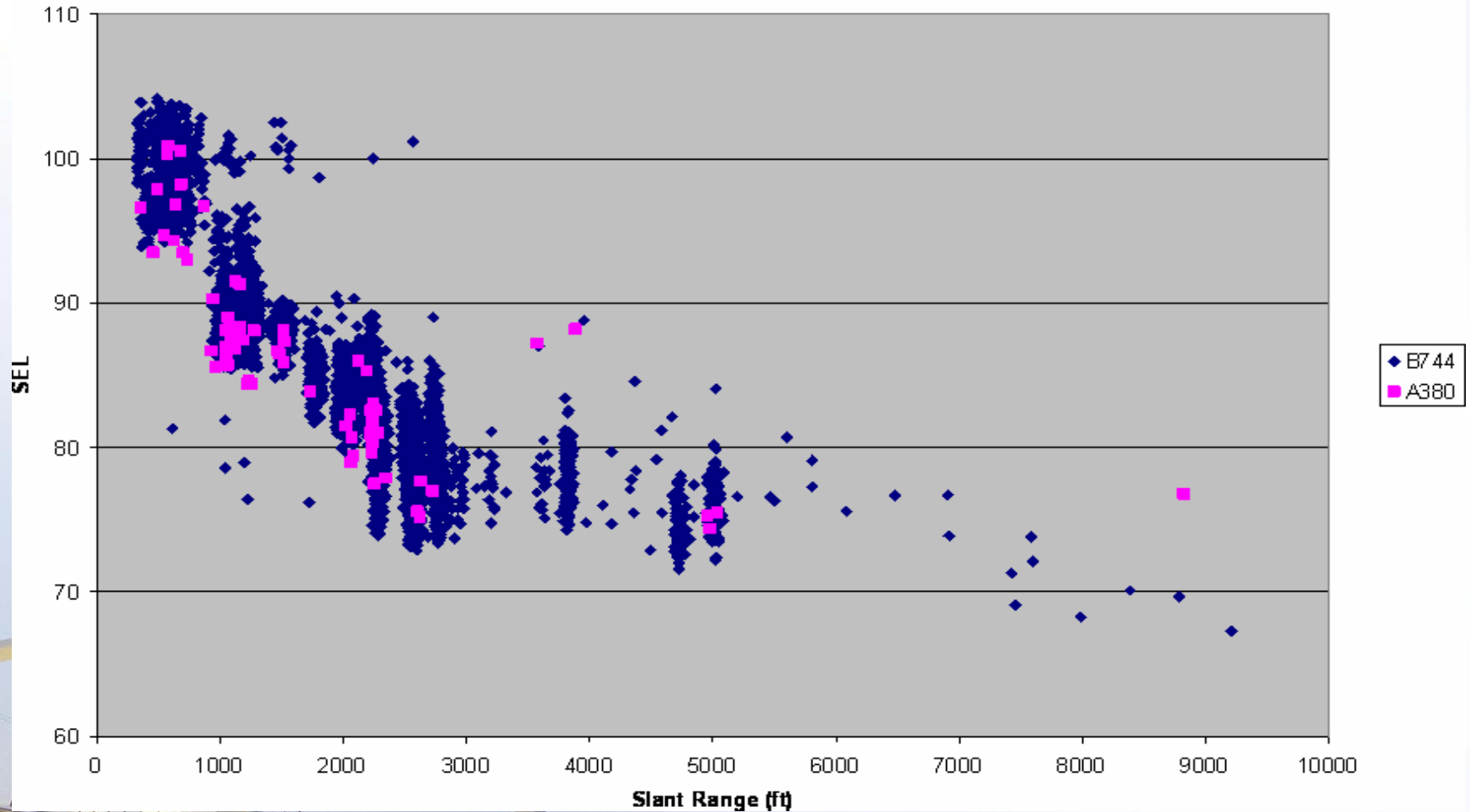
SEL	11/28/07 Arrival			8/5/08 10 AM Arrival	8/5/08 1:29 PM Arrival
Monitor	A380	B747	B777	A380	A380
ATH2	88.4	86.7	82.7	85.3	86.9
ING4	82.7	81.5	76.8	78.3	83.3
ING6	89.1	91.8	89.9	87.8	89.6
LNx1	95.7	95.9	92.0	94.8	95
LNx2	80.2	82.0	77.6	81.0	81.9
LNx3	81.0	80.4	76.0	81.2	80.9
Average	86.2	86.4	82.5	84.7	86.3

A380 Noise Comparison on Departures at LAX

SEL	11/30/07 Departure			8/5/08 Departure	8/6/08 Departure
Monitor	A380	B747	B777	A380	A380
ESG1	91.7	92	83.9	81	80.4
ESG2	96.9	93.7	86.1	86.2	85.1
ESG3	86.8	90	79.7	77	80.2
ESG5	84.9	84.9	78.1	81.3	
PDR1	84.6	79.5	81.5	74.9	
Average	89.0	88.0	81.9	80.1	

A380 Noise Comparison at Heathrow

Arrivals A380 vs B747



A380 Noise Comparison at Heathrow

Departures A380 vs B744

