



Statistical Update on Aircraft Operations

November 10, 2015

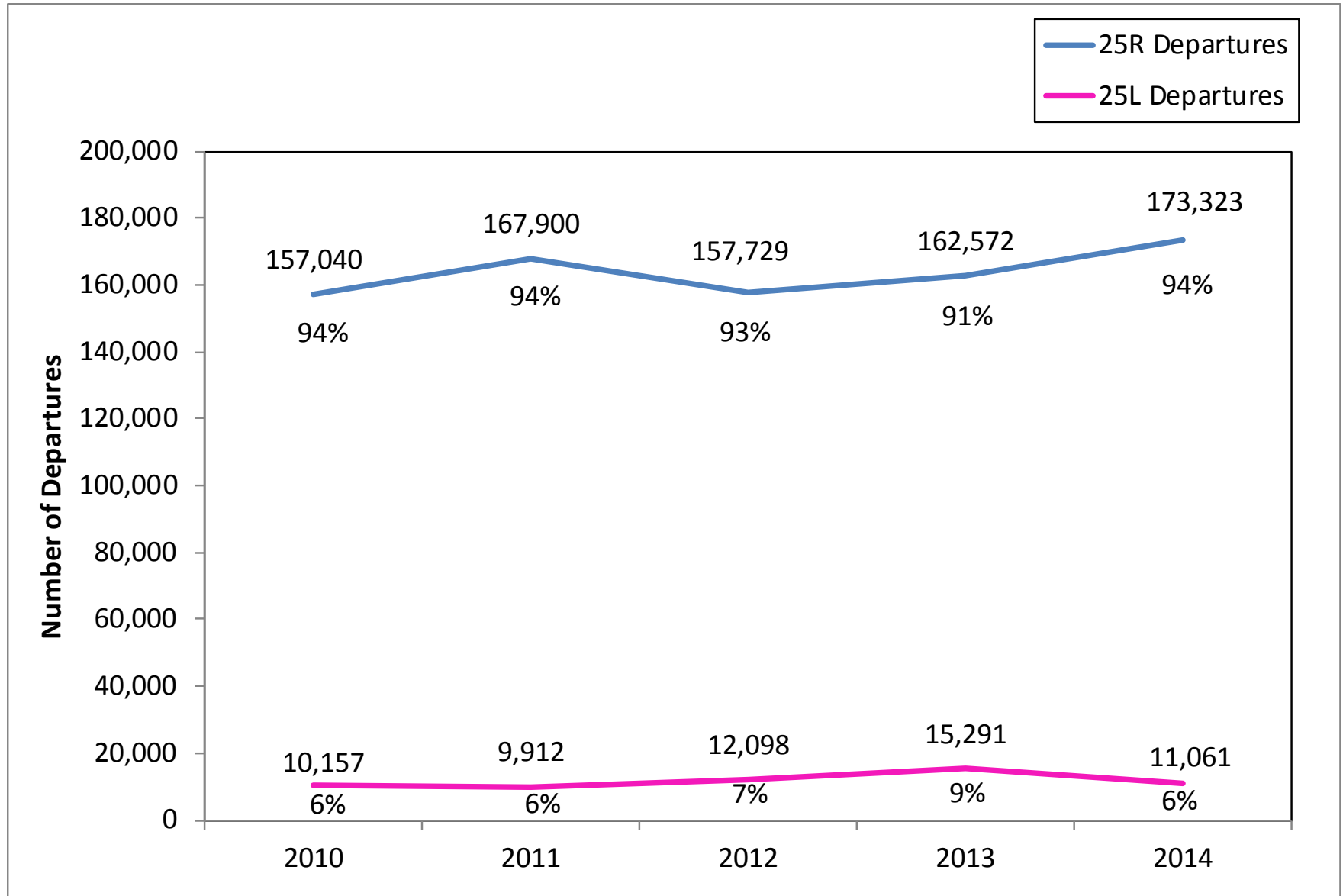
LAX/Community Noise Roundtable

Overview

Statistical information on the following operations:

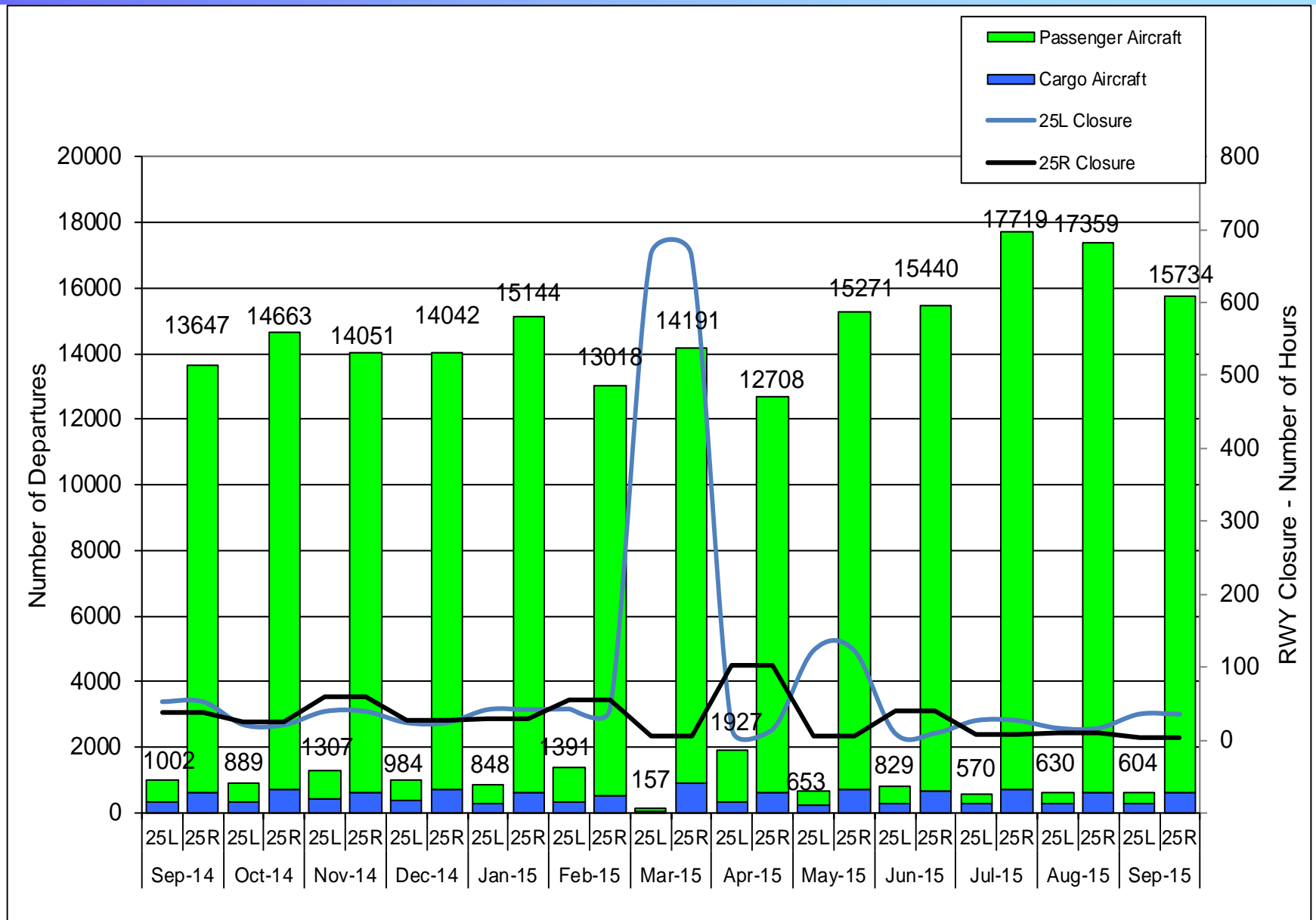
- 25L Departures
- Palos Verdes Overflights

Departures – Runways 25L and 25R Annual Comparison

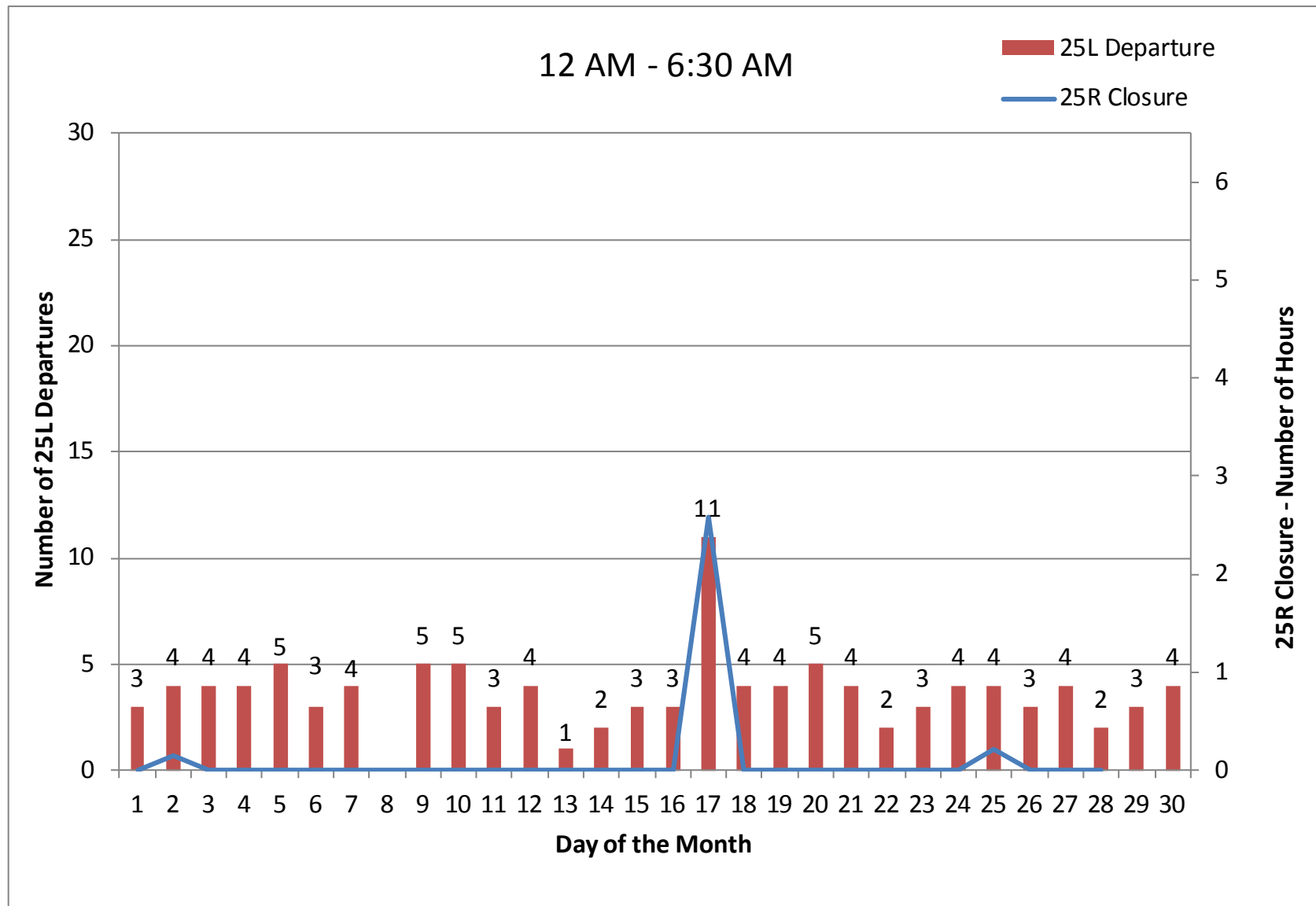


Departures – Runways 25L and 25R

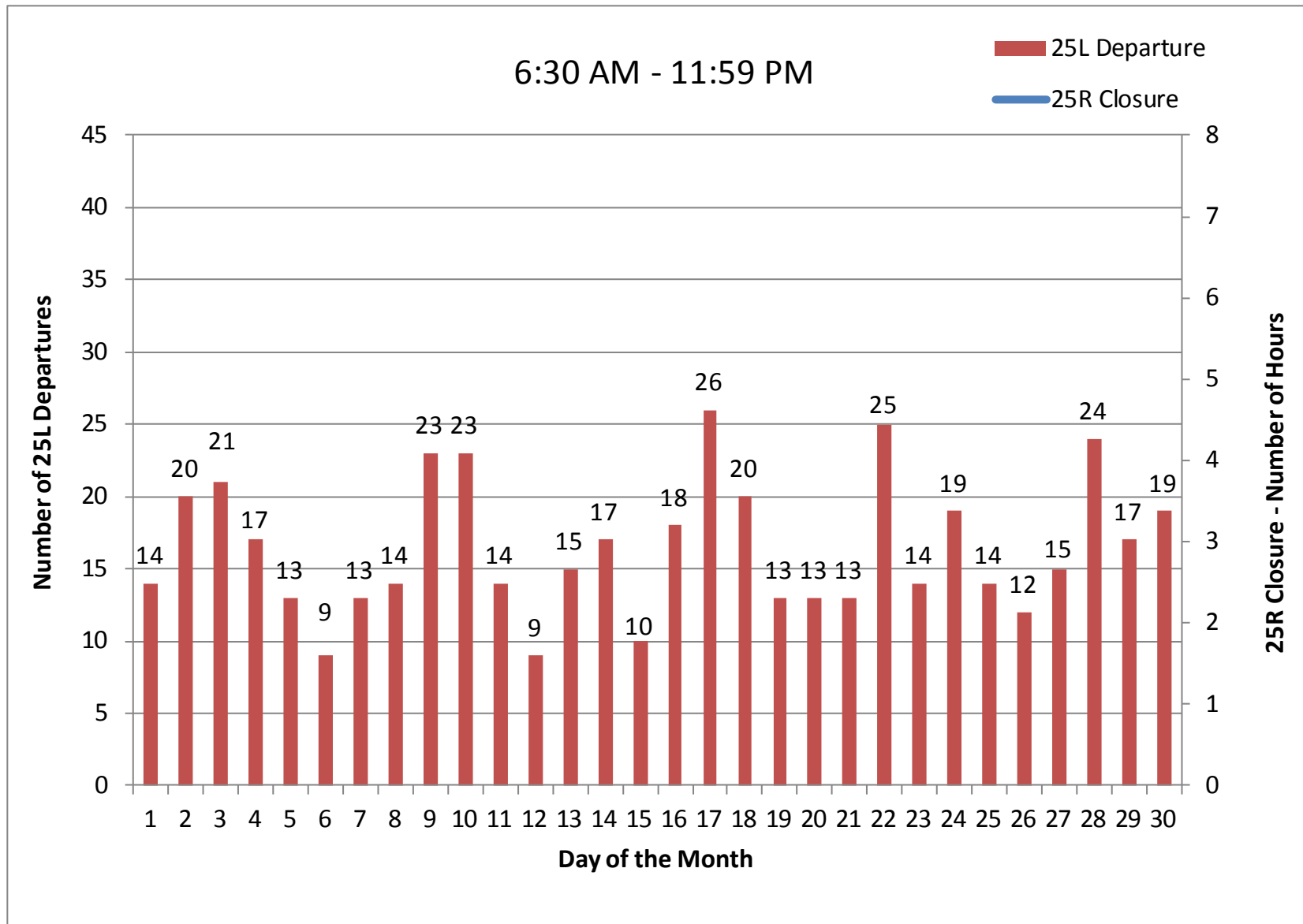
13-month period



25L Departures September 2015



25L Departures September 2015



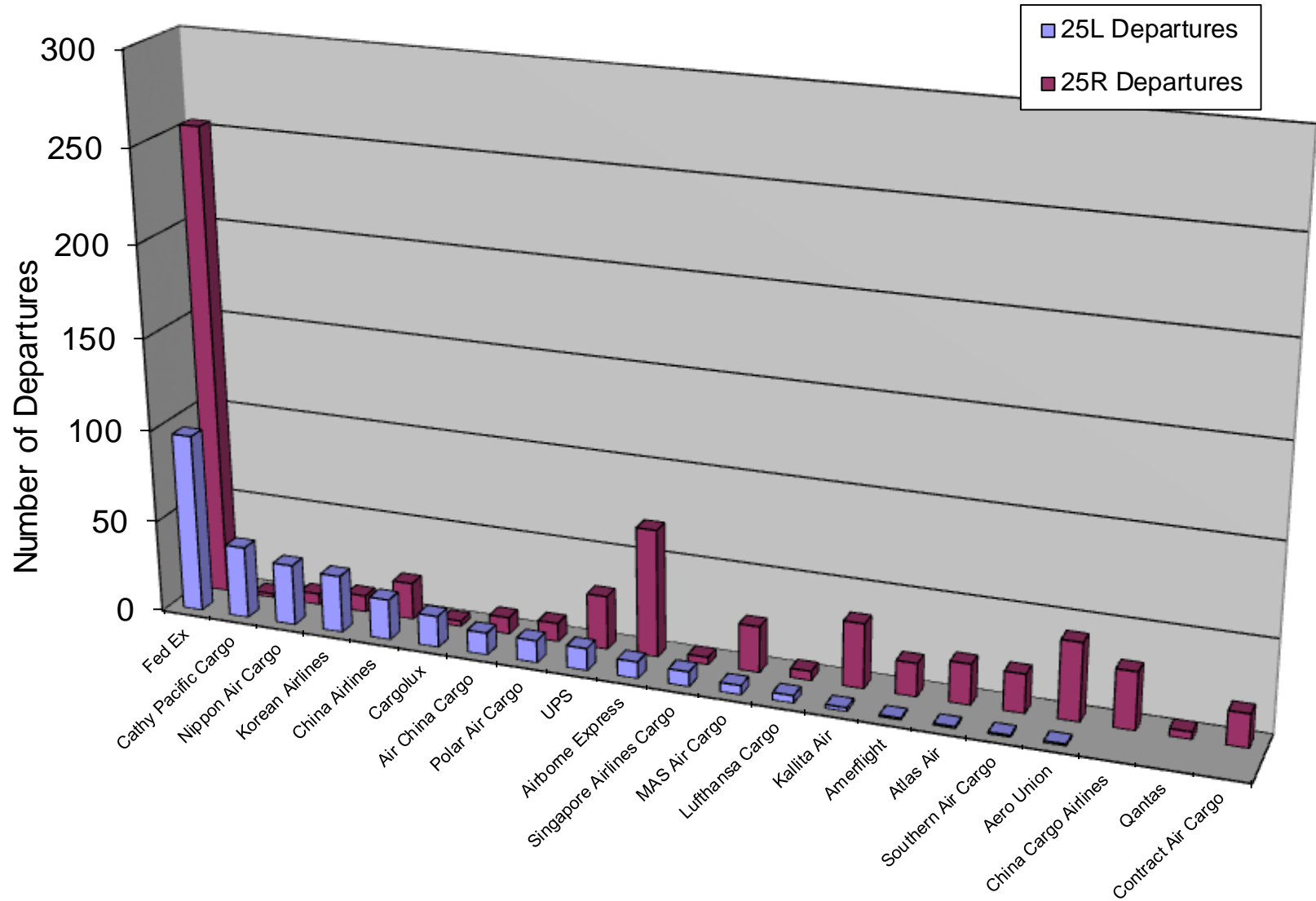
Departures by Aircraft Category September 2015

6:30 AM - 11:59 PM			
<i>Aircraft Category</i>	<i>25L Departures</i>	<i>25R Departures</i>	<i>Total</i>
Passenger	1%	99%	12876
General Aviation	22%	78%	515
Cargo	46%	54%	509
Total	4%	96%	13900

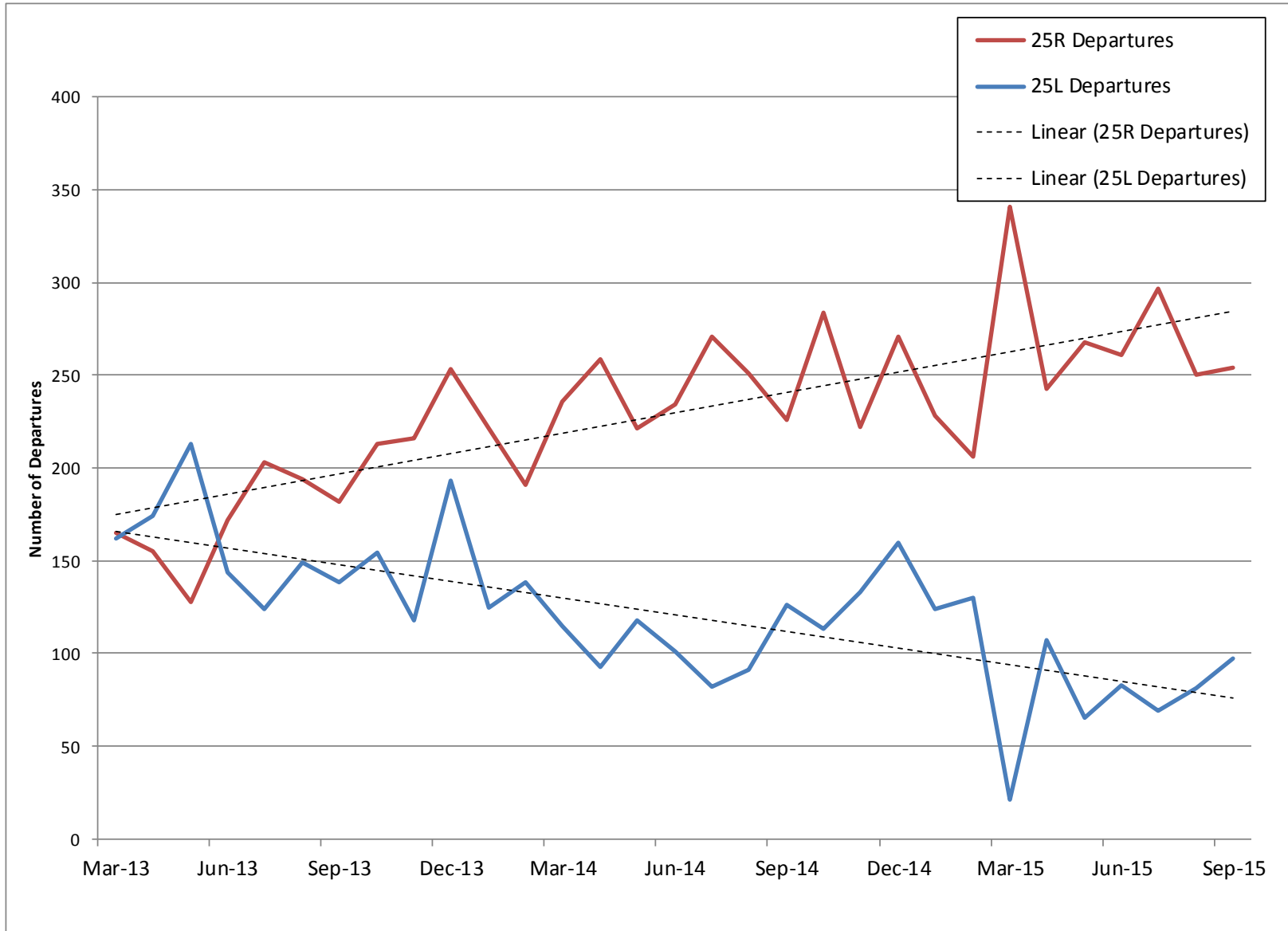
12 AM – 6:30 AM			
<i>Aircraft Category</i>	<i>25L Departures</i>	<i>25R Departures</i>	<i>Total</i>
Passenger	2%	98%	1973
General Aviation	0%	100%	31
Cargo	17%	83%	434
Total	5%	95%	2438

Cargo Departures on 25L & 25R by Operator

September 2015

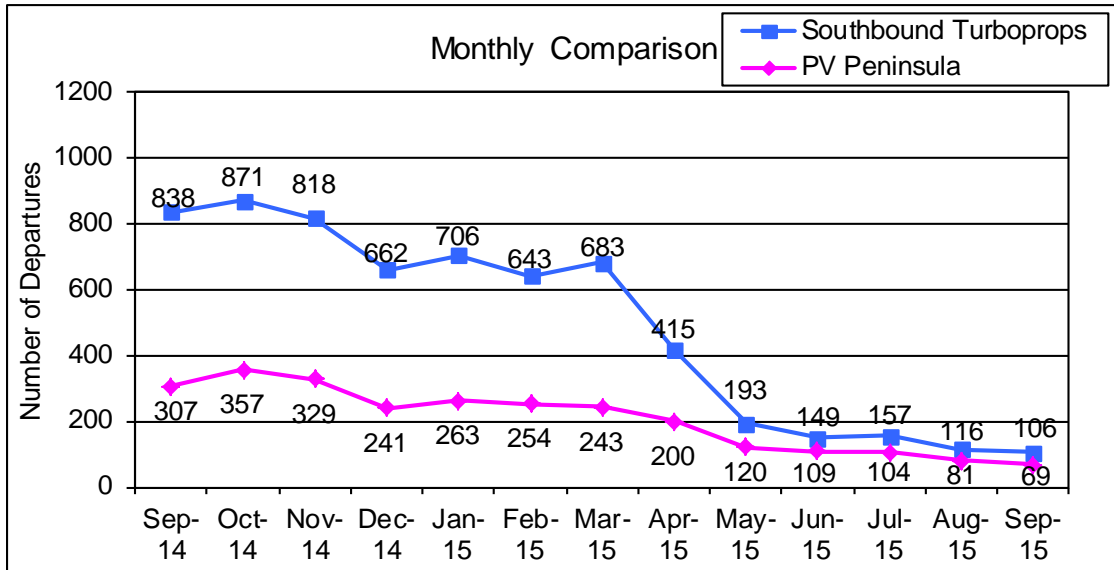
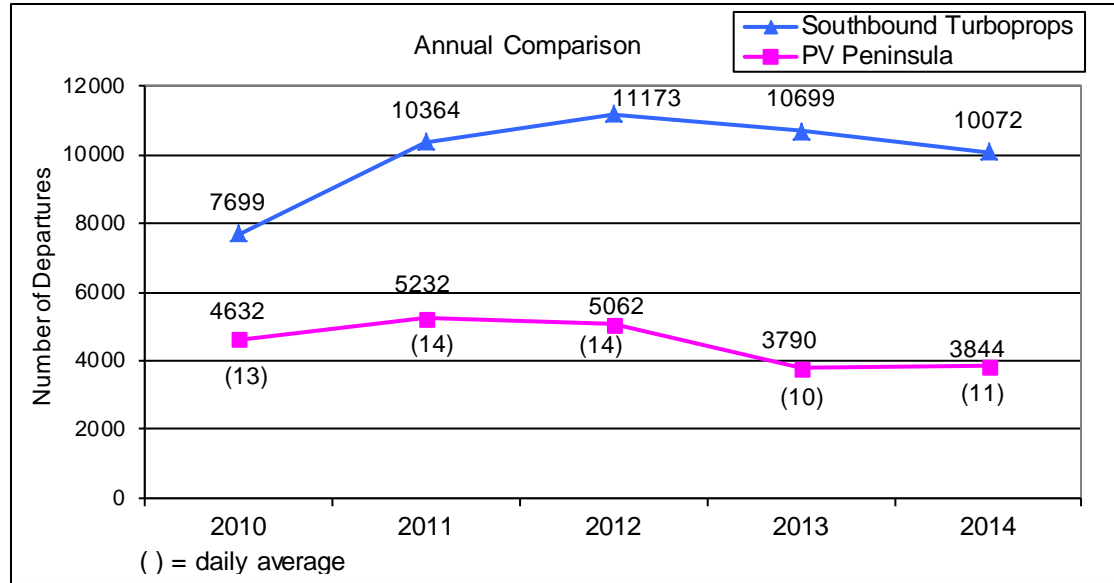
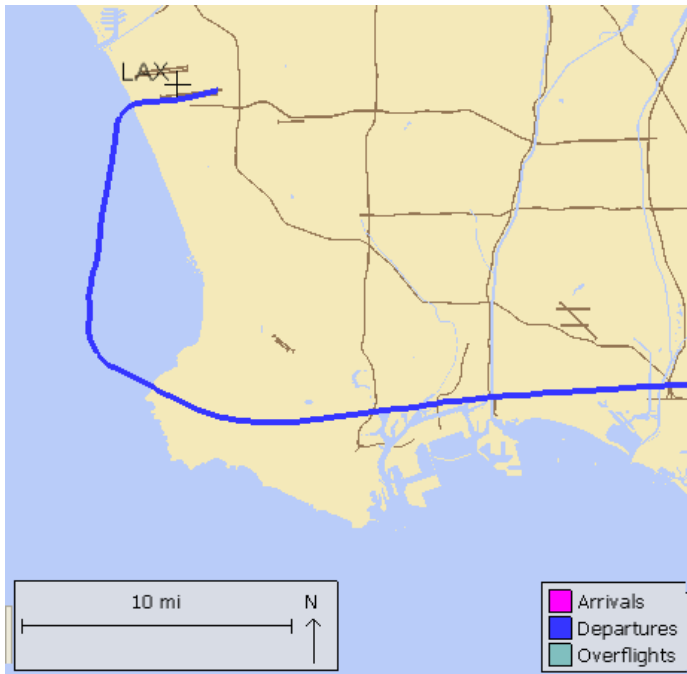


Fed Ex Departures on 25L & 25R

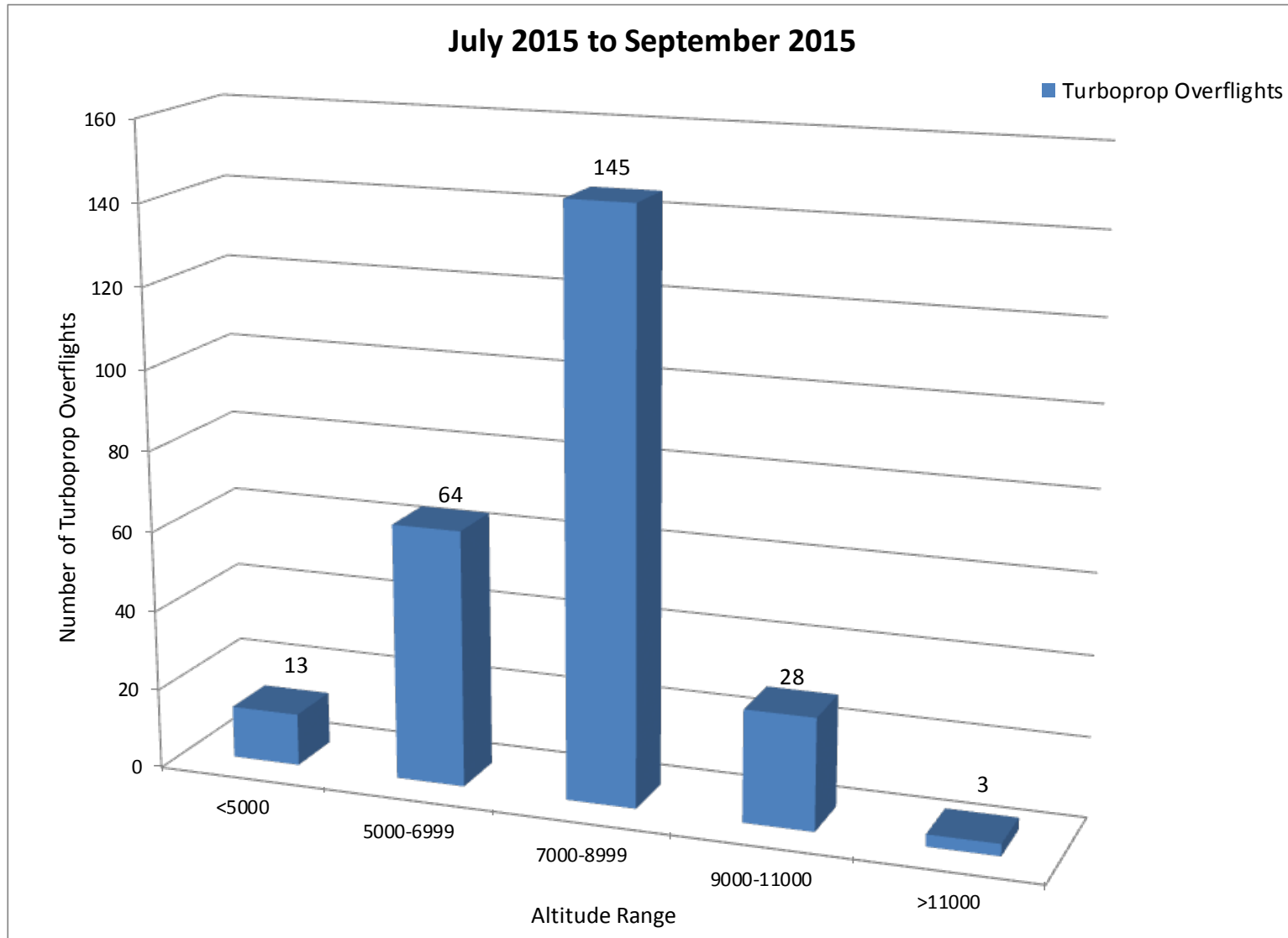


Palos Verdes Peninsula – Turboprop Overflights

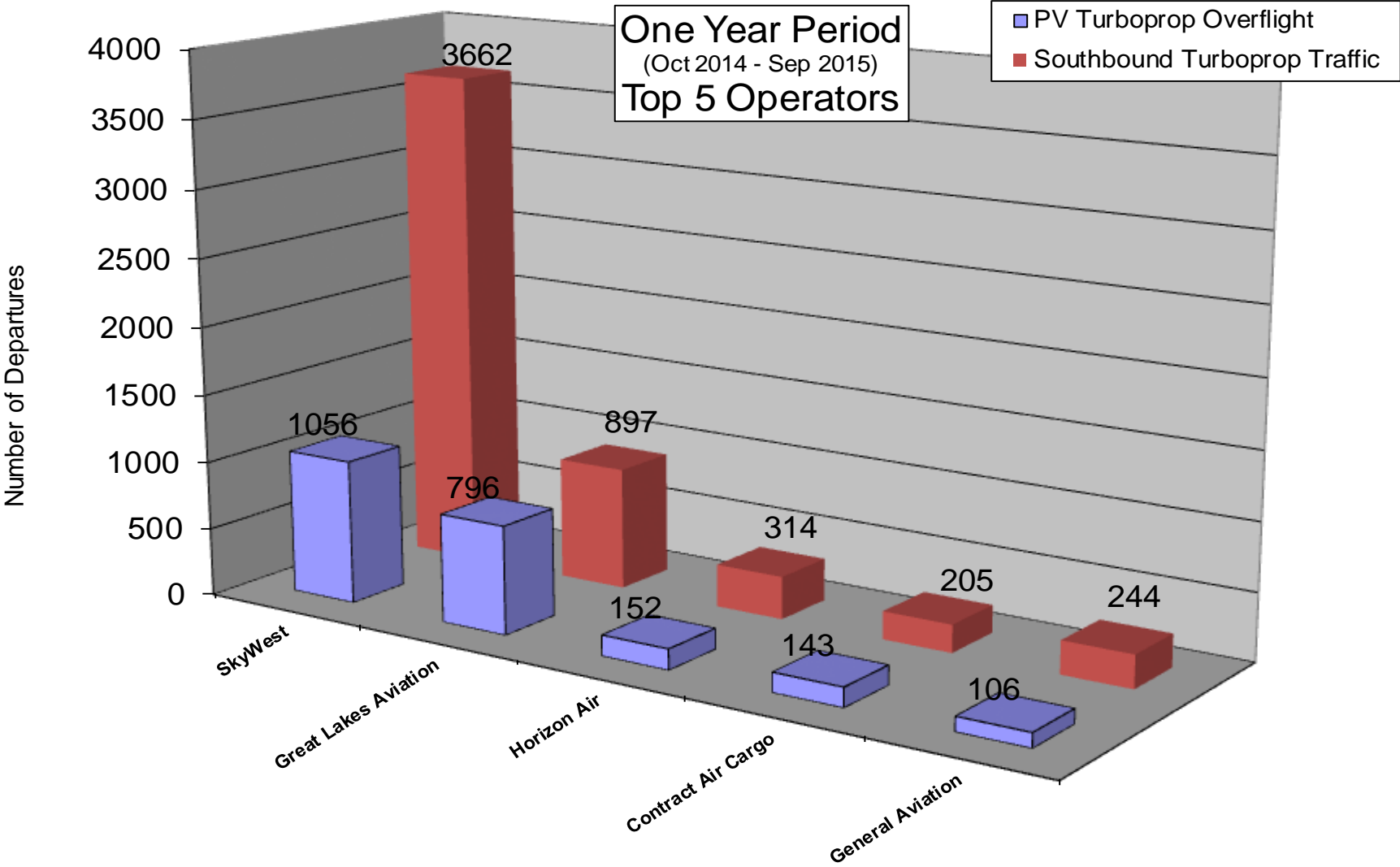
Monitoring southbound turboprops departing from LAX that overfly Peninsula



Turboprop Altitudes over PV

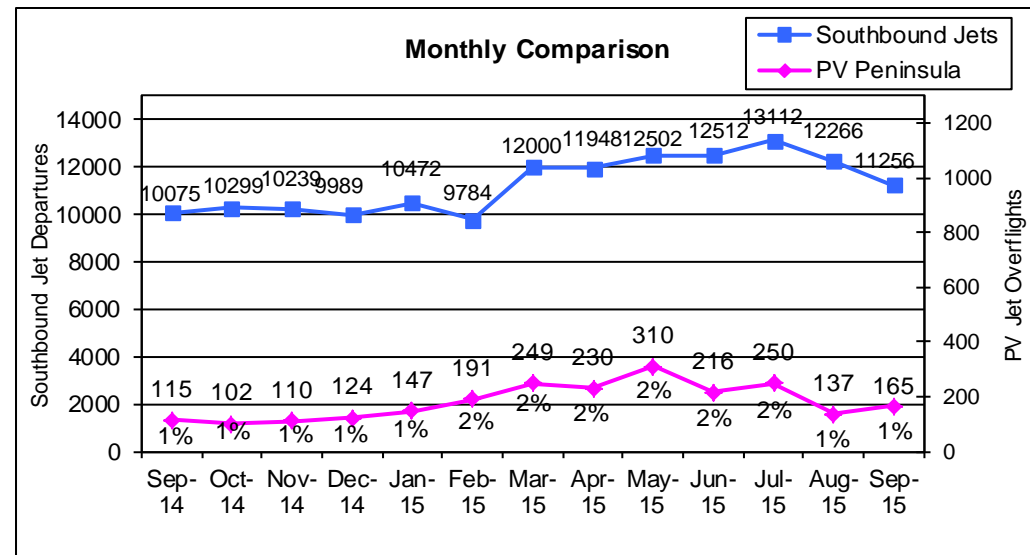
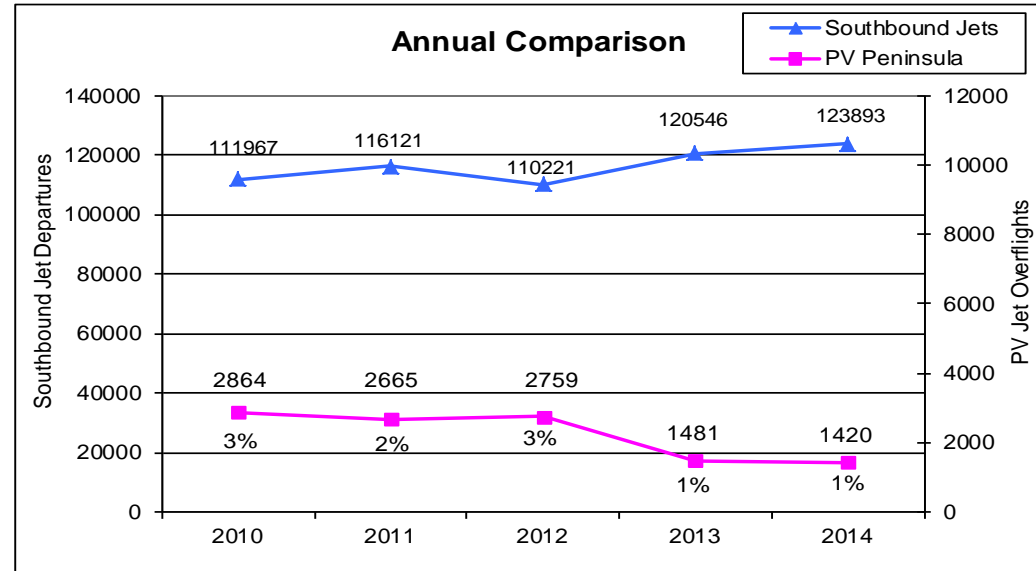
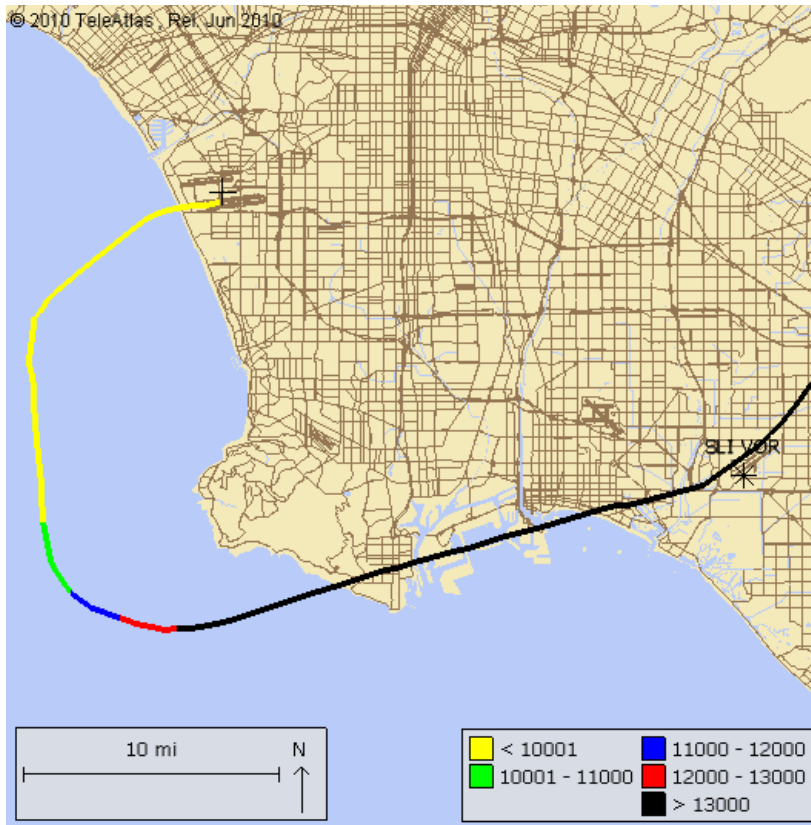


Turboprop Operators



Palos Verdes Peninsula – Jet Overflights

Monitoring southbound jets departing from LAX that overfly Peninsula



Jet Altitudes over PV Peninsula

