



Statistical Update on LAX Aircraft Operations

March 11, 2015

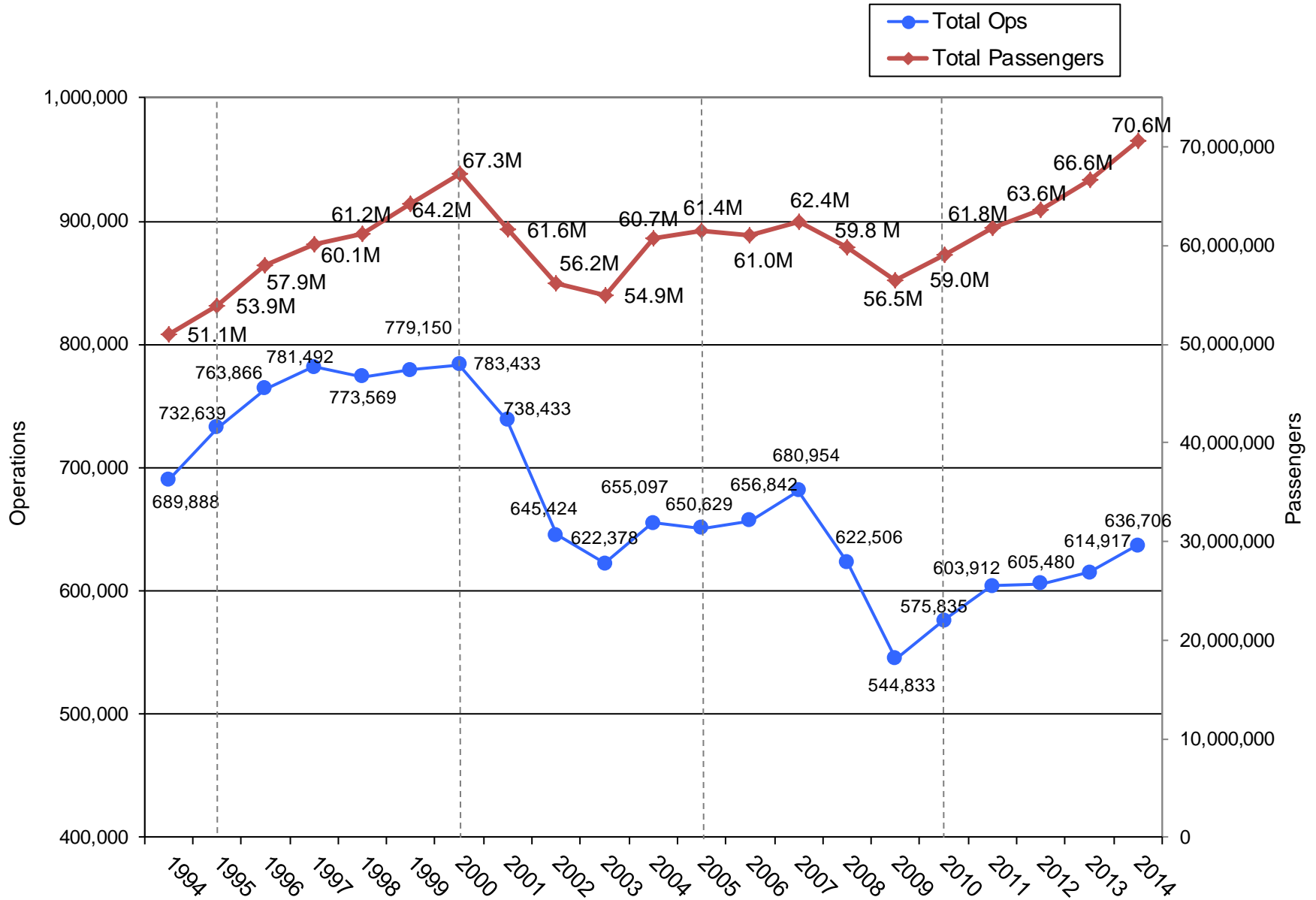
LAX/Community Noise Roundtable

Overview

Statistical information on the following operations:

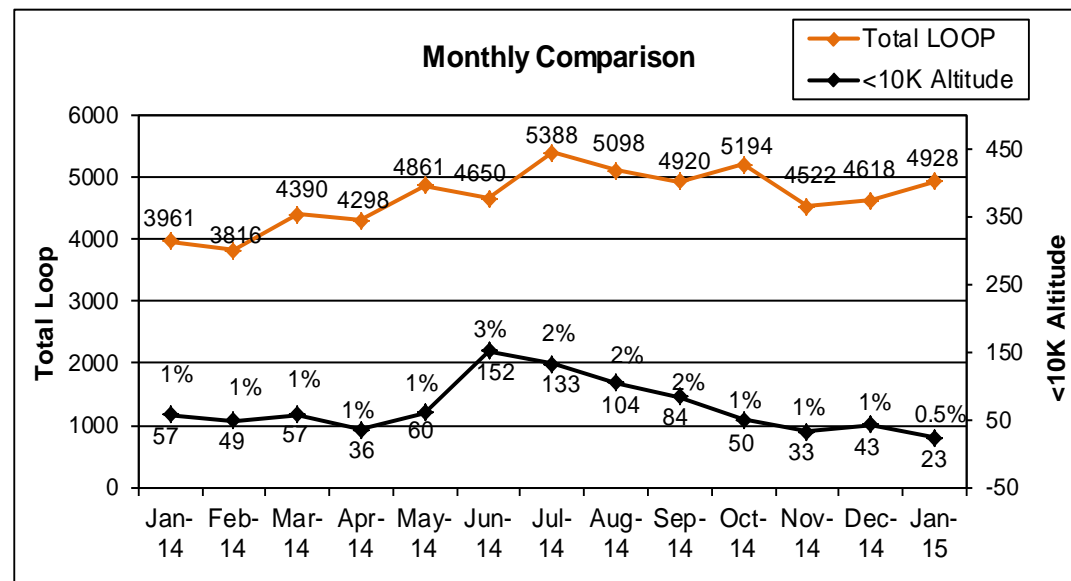
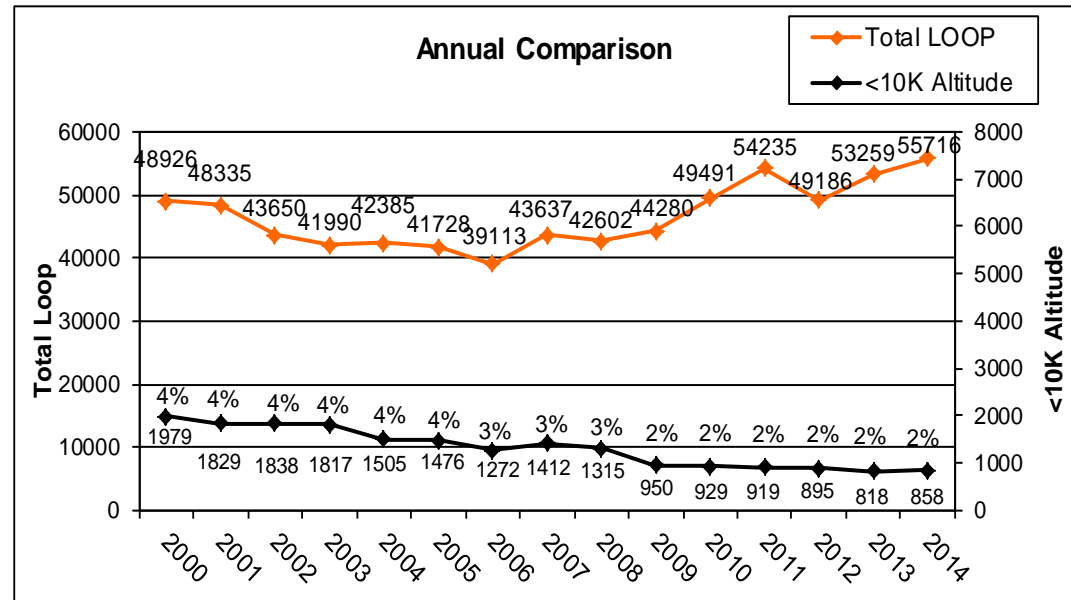
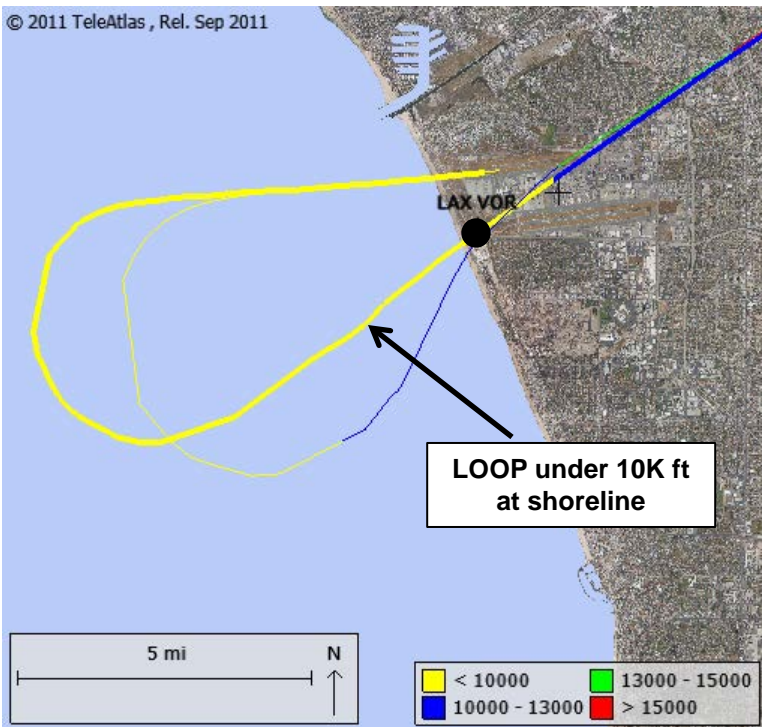
- Loop Departure
- Short Turn
- Extended Downwind Approach

Total Operation & Passenger Trends

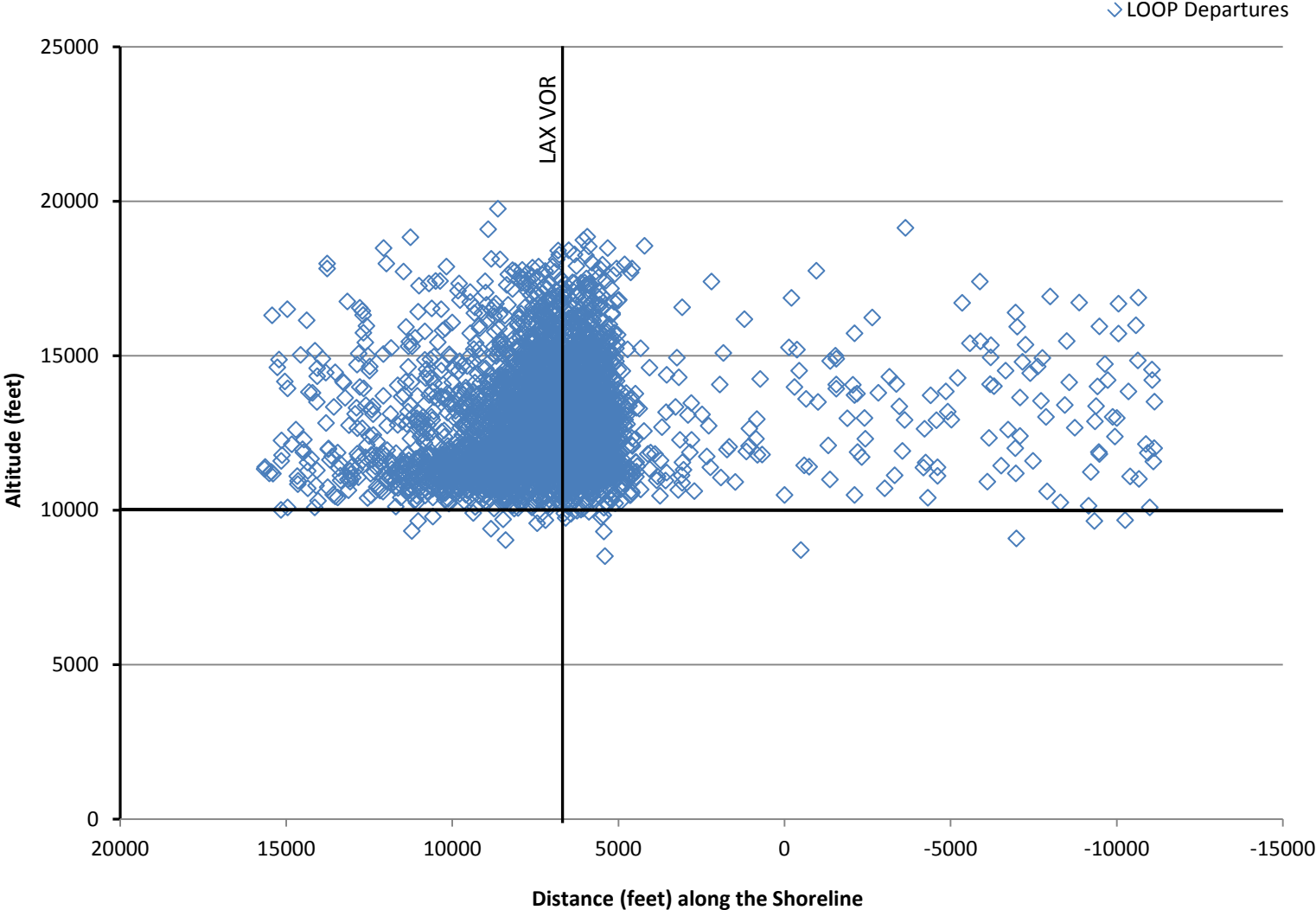


LAX Loop Departure

Monitoring LOOP departures under 10,000 ft Altitude



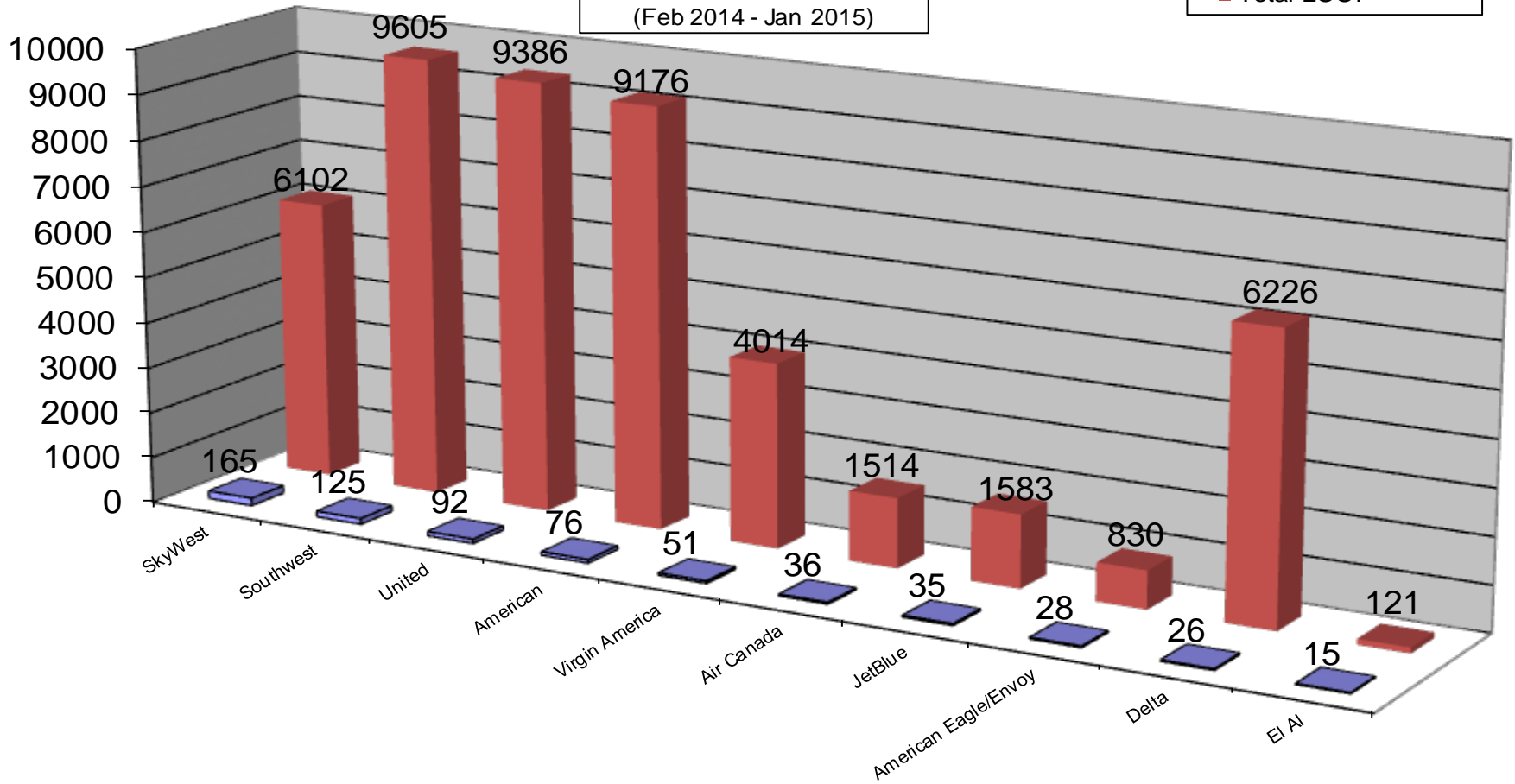
Re-crossing the Shoreline



Loop Departure by Operator

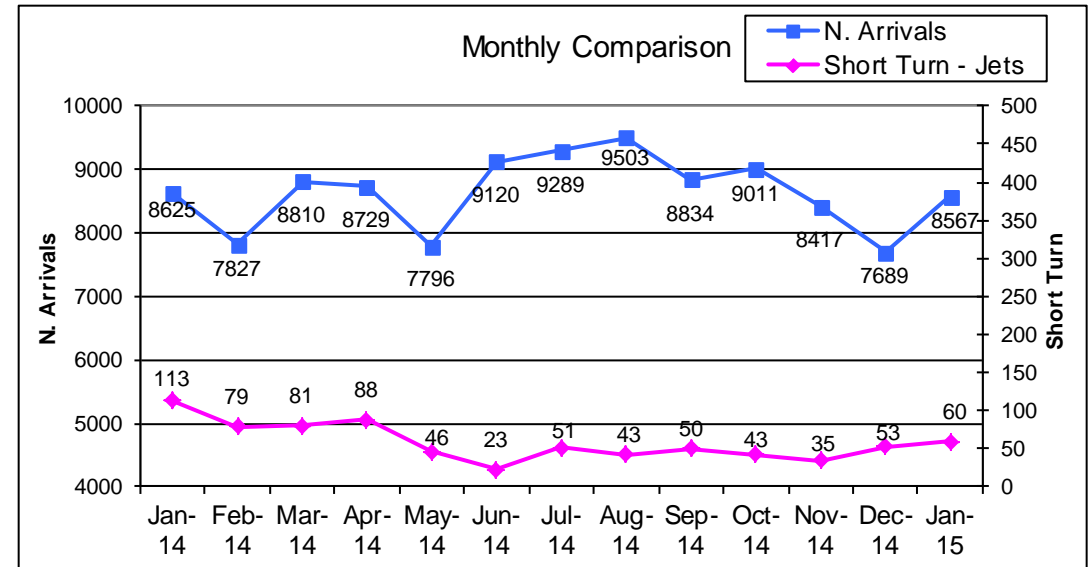
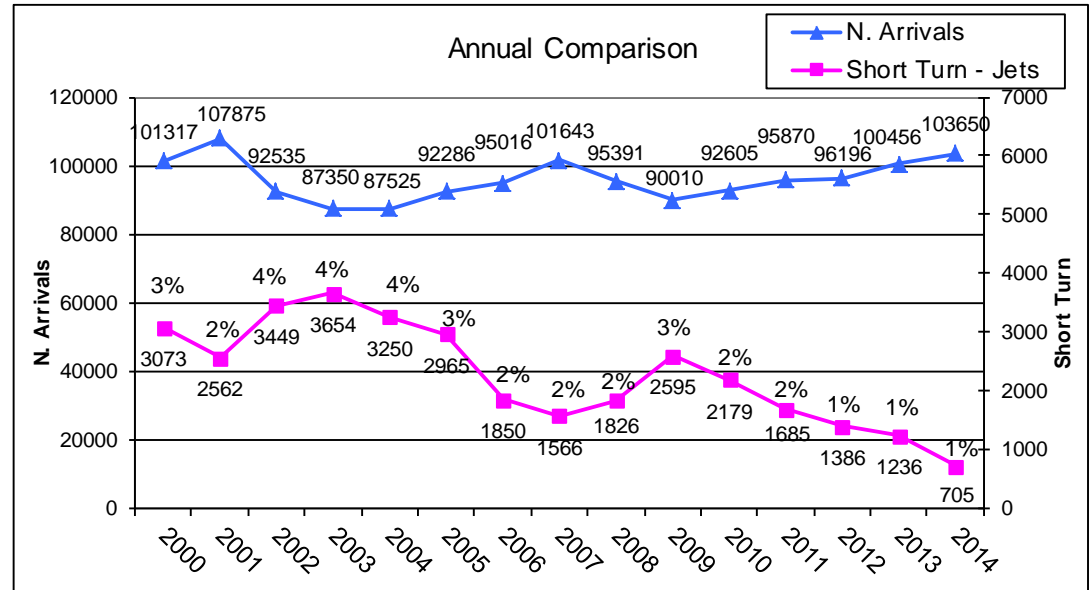
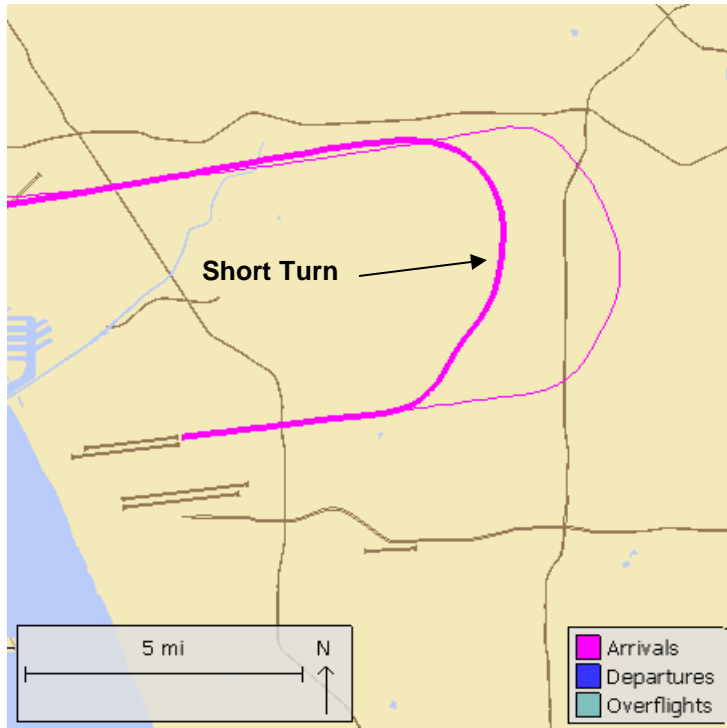
Top 10 Operators
One Year Period
(Feb 2014 - Jan 2015)

■ LOOP under 10K ft
■ Total LOOP



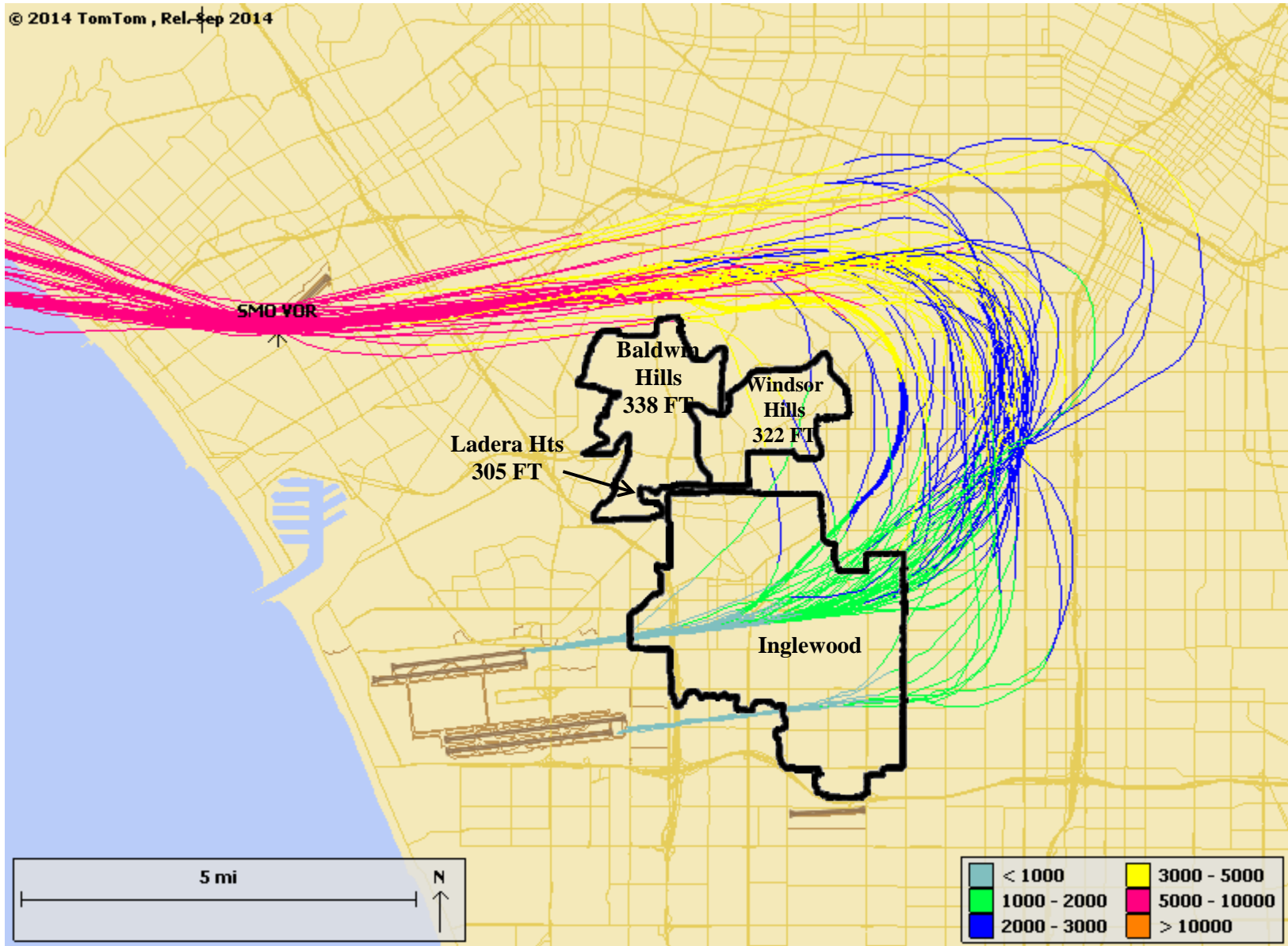
Short Turn

Arriving jet aircraft turning early prior to reaching the Harbor Freeway to land at LAX

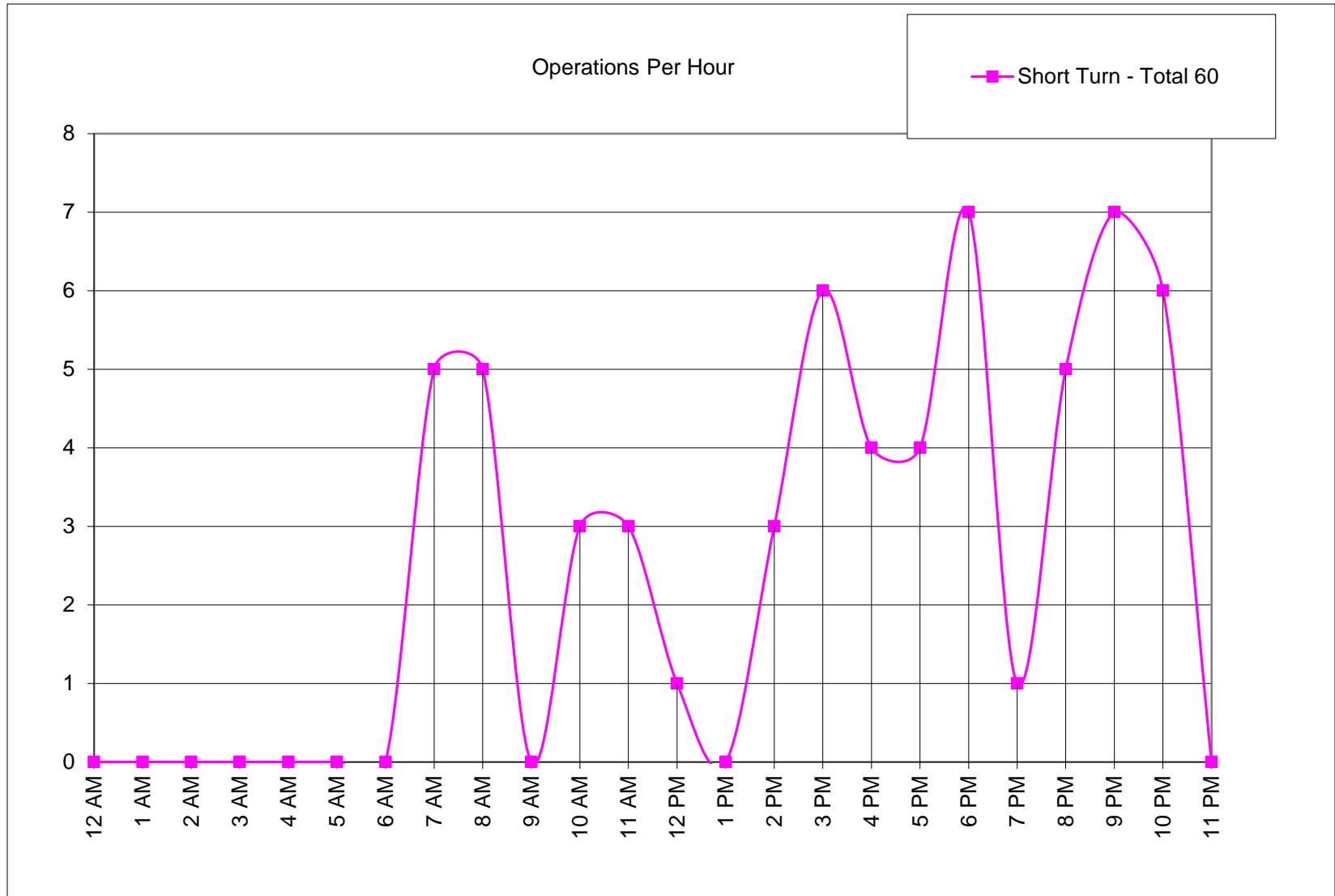


Short Turn Flight Tracks – January 2015

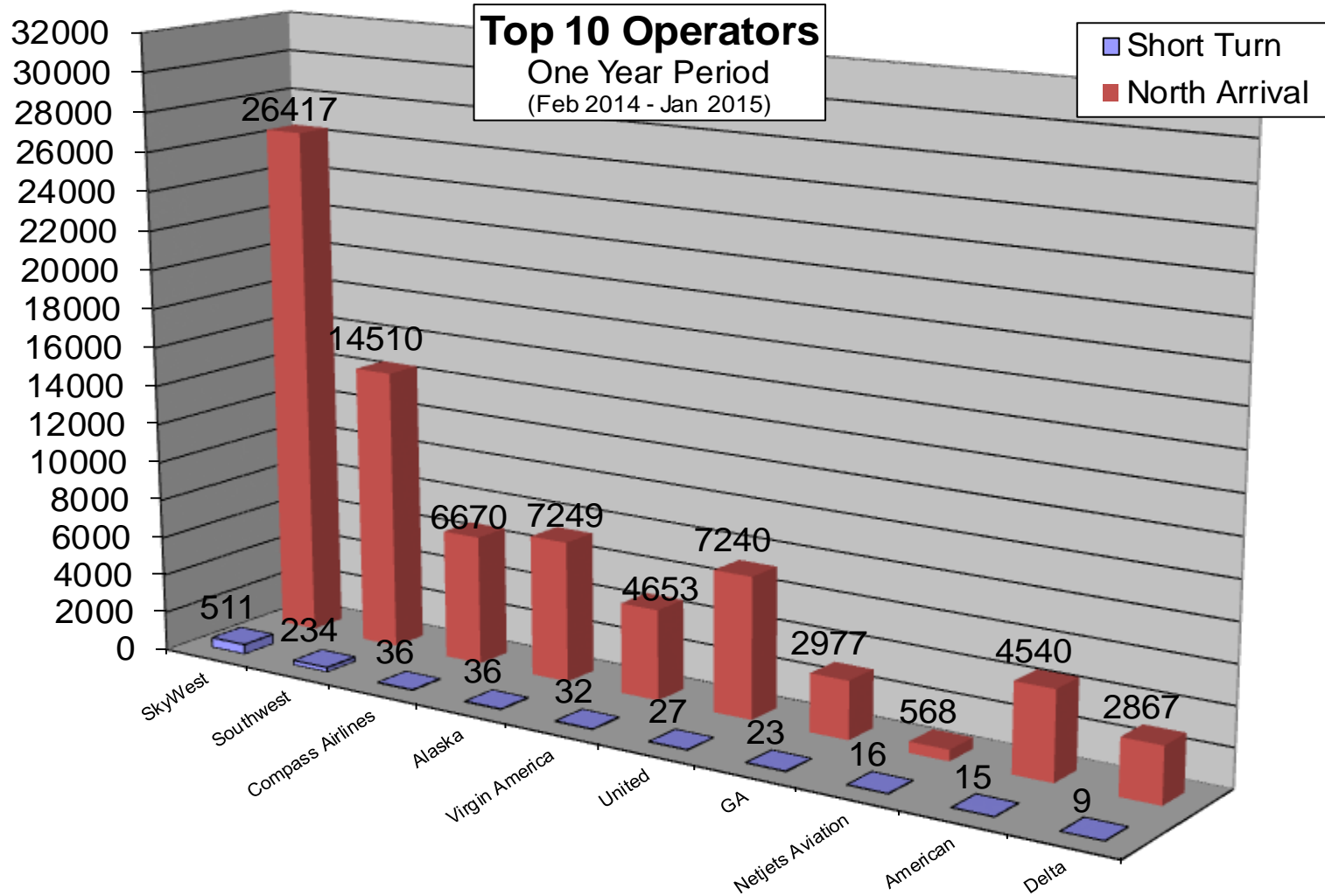
© 2014 TomTom, Rel. Sep 2014



Short Turn – Time of Day January 2015

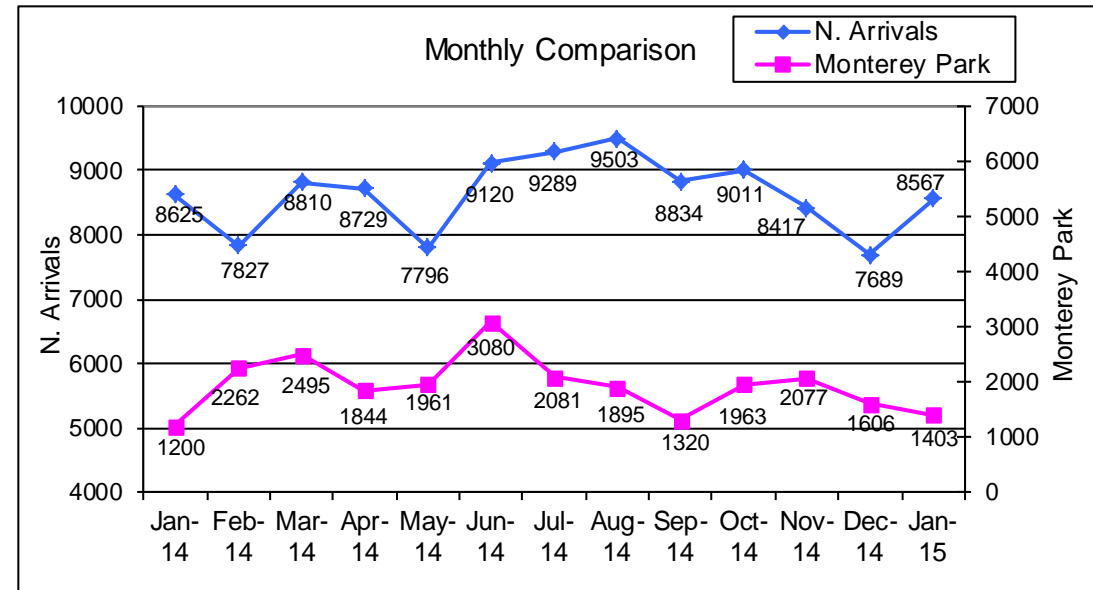
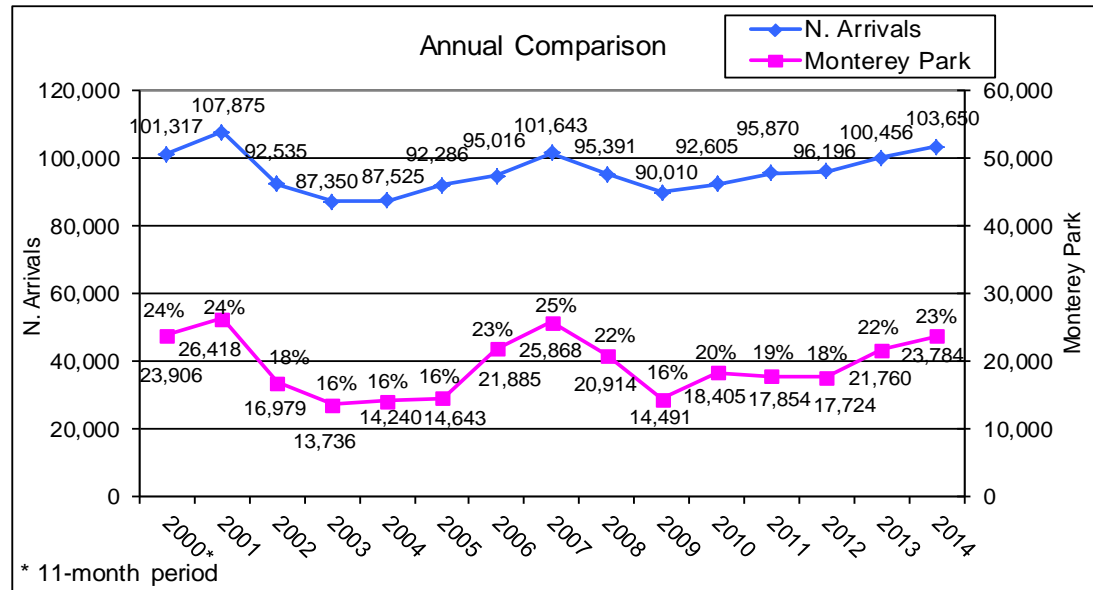
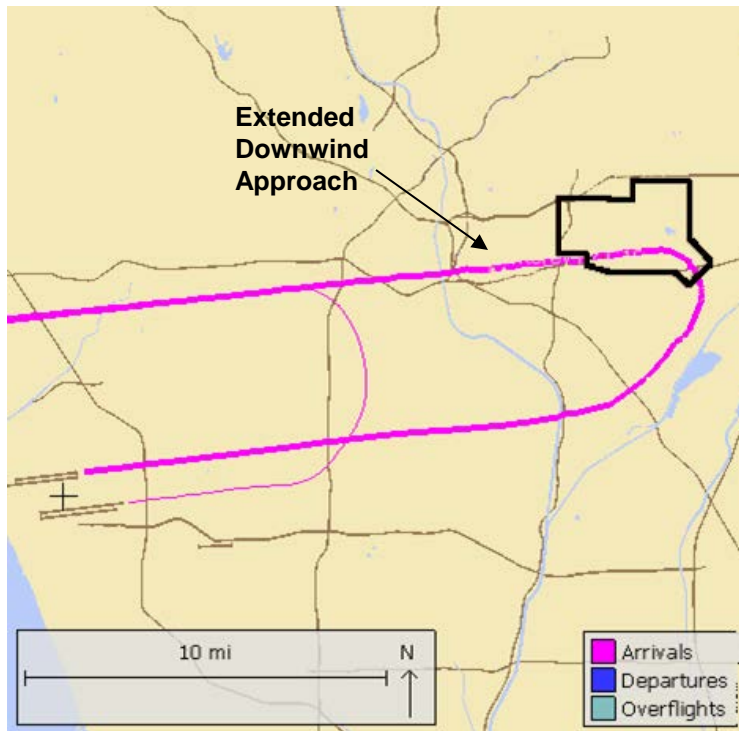


Short Turn by Operator

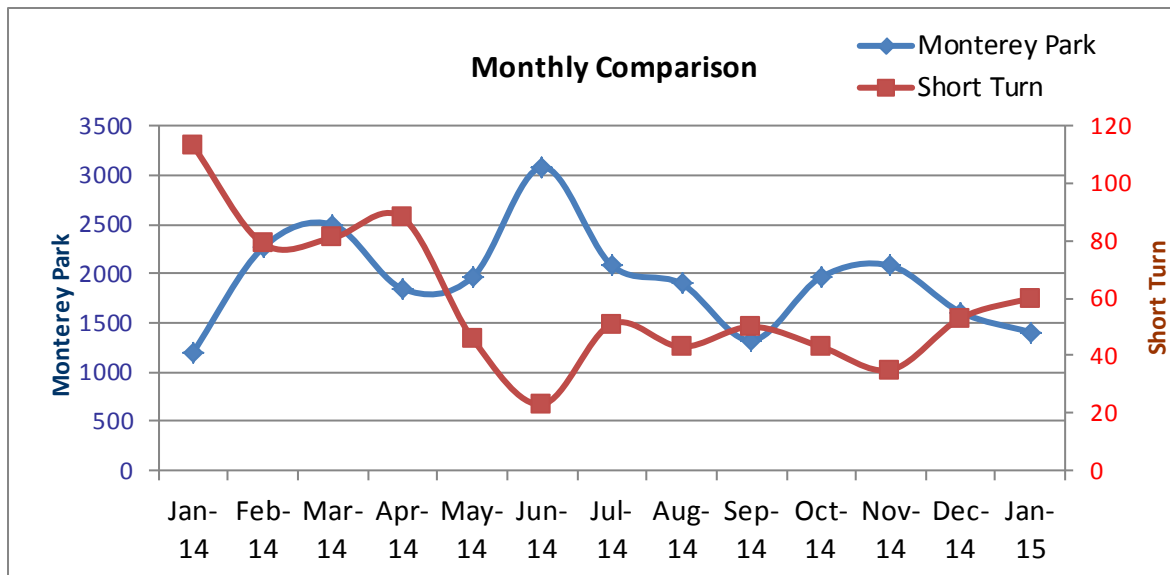
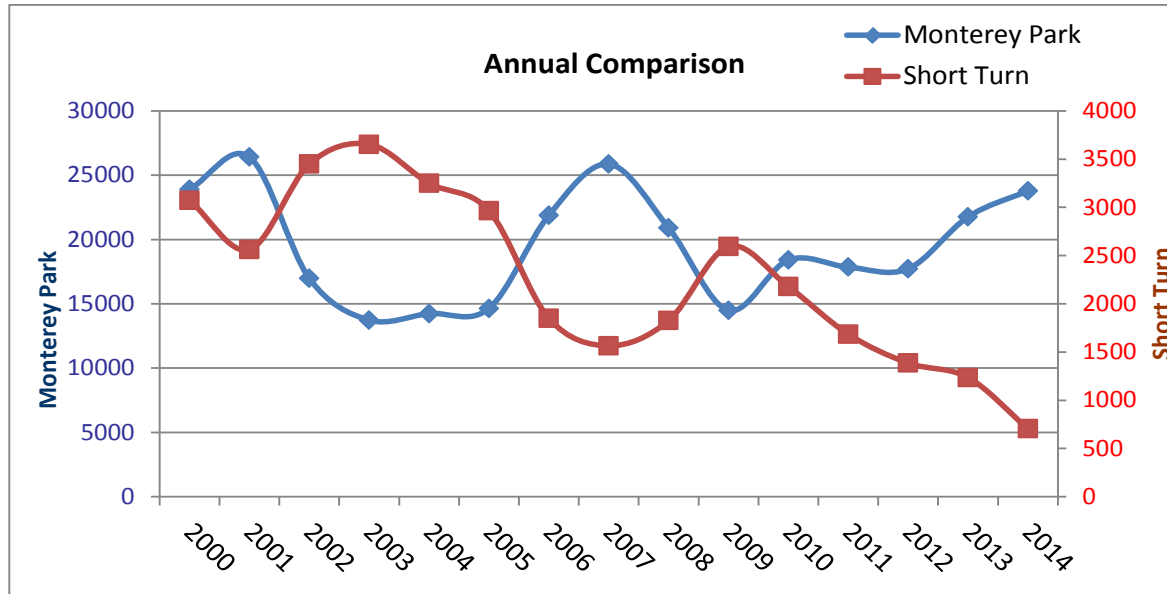


Extended Downwind Approach

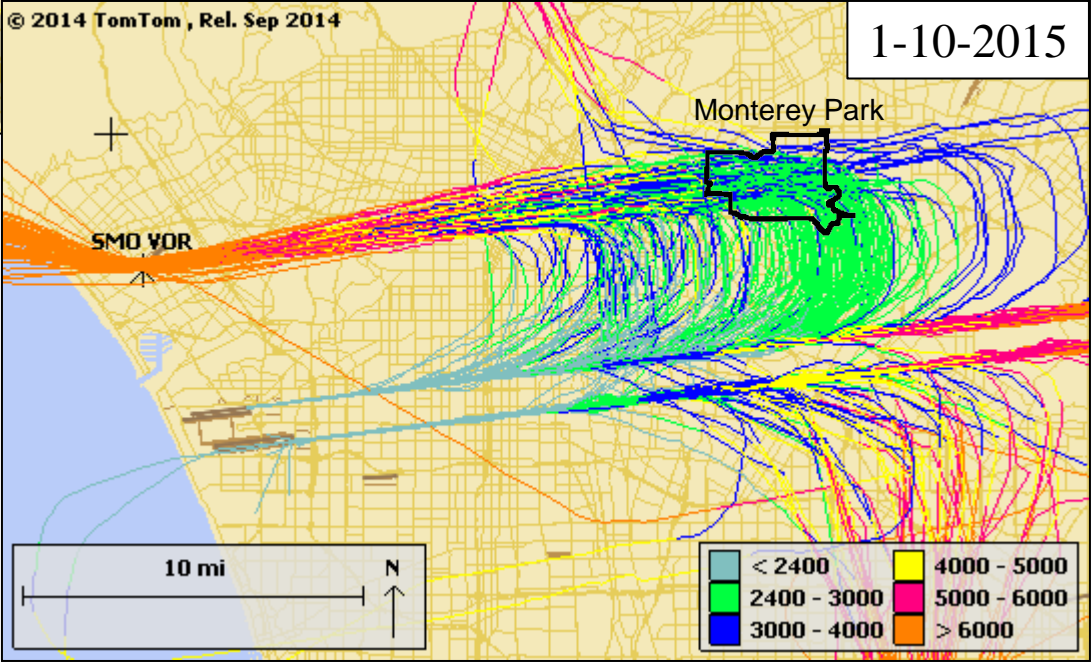
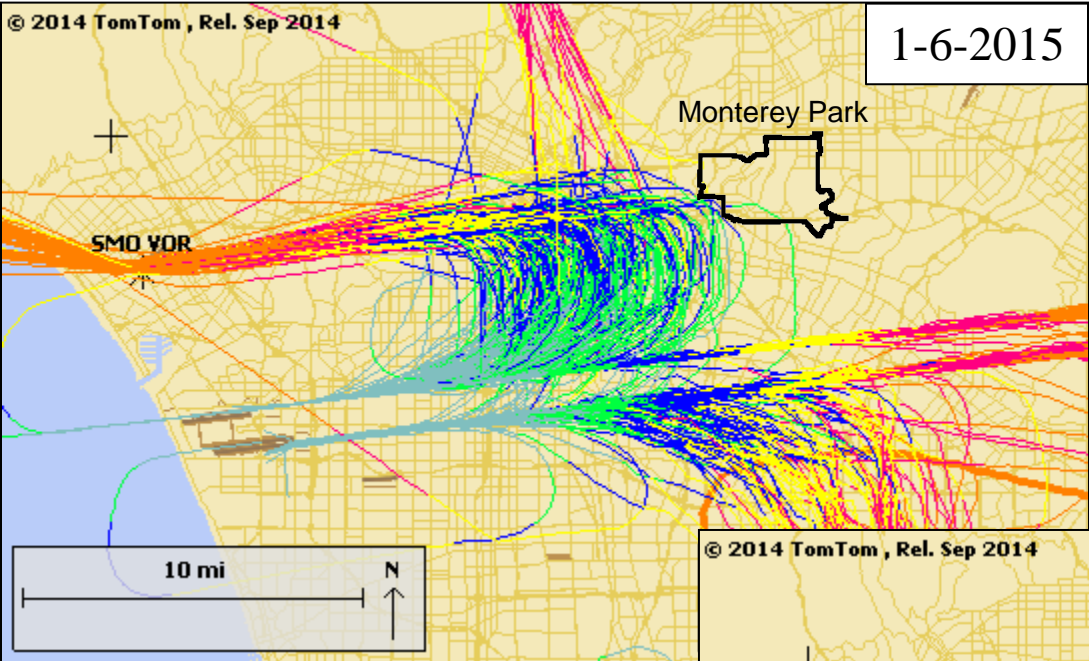
Monitoring north arrivals extending downwind over Monterey Park boundary



Inverse Relationship between Short Turn and Extended Downwind Approach

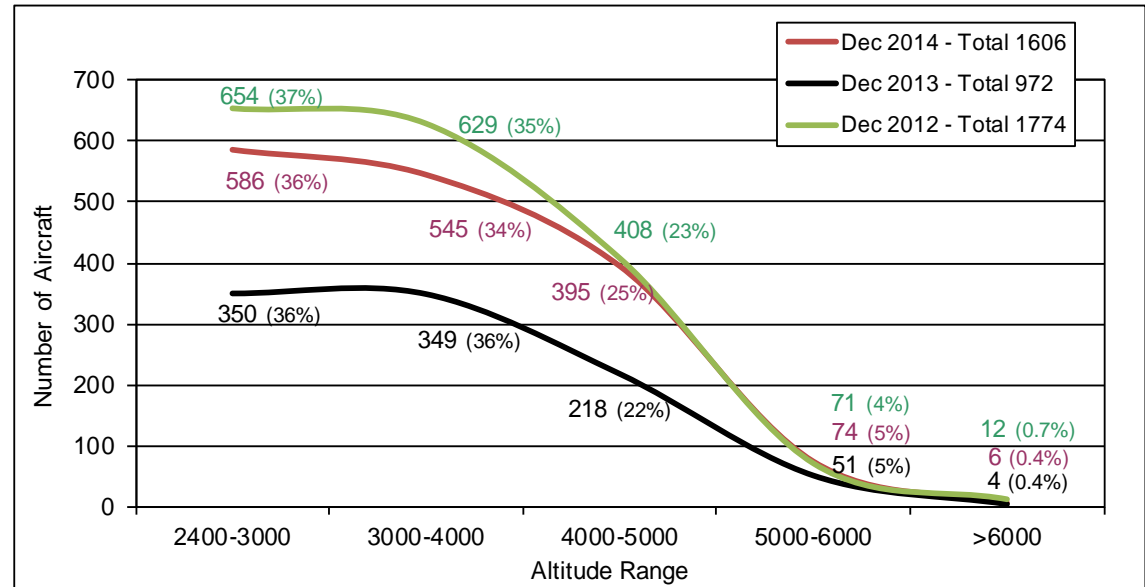


LAX Arrival Traffic One Day Comparison

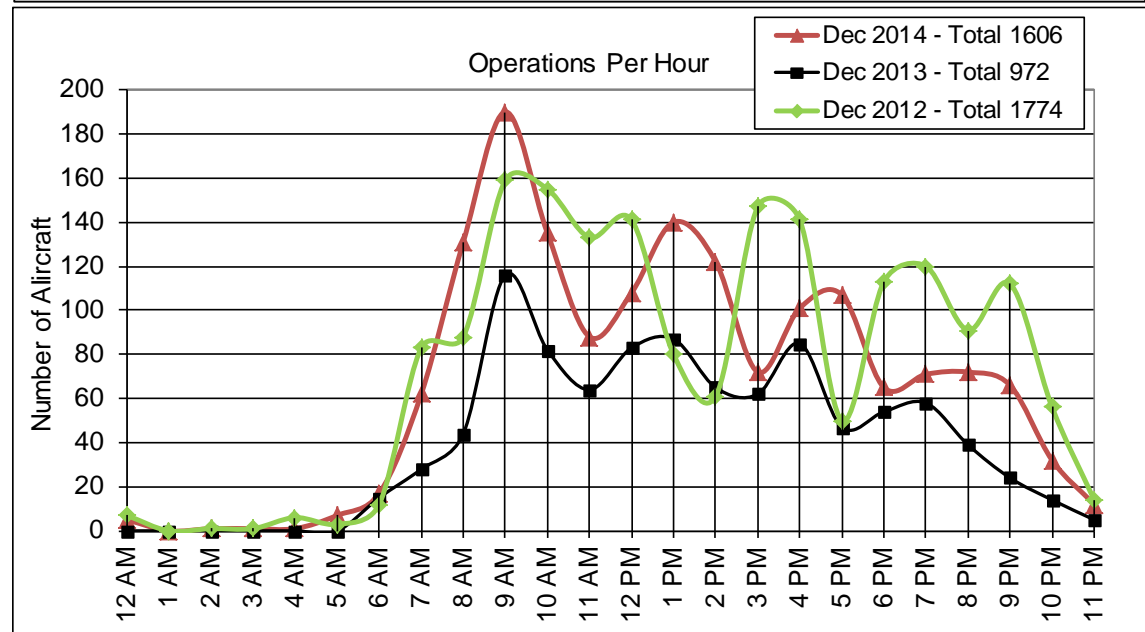


Extended Downwind Approach

Altitude over Monterey Park



Number of Operations By Time of Day



Extended Downwind Approach by Operator

