



Statistical Update on LAX Aircraft Operations

September 10, 2014

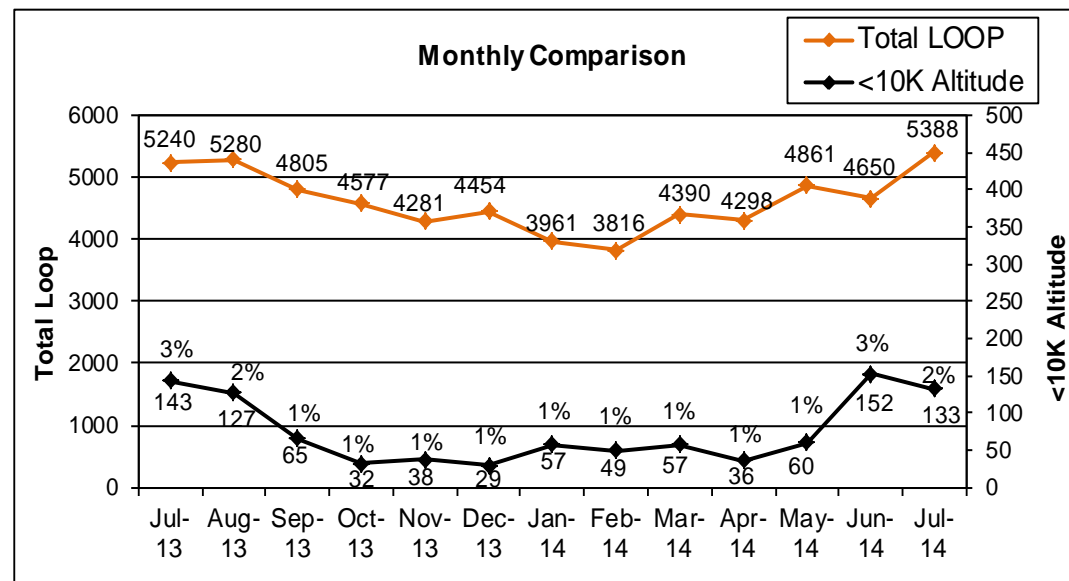
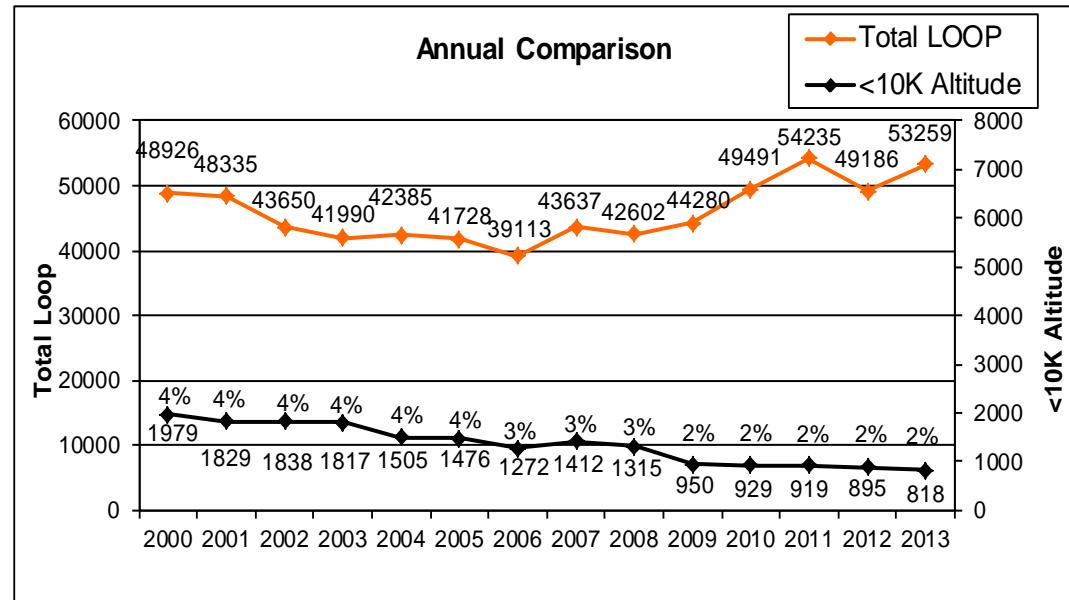
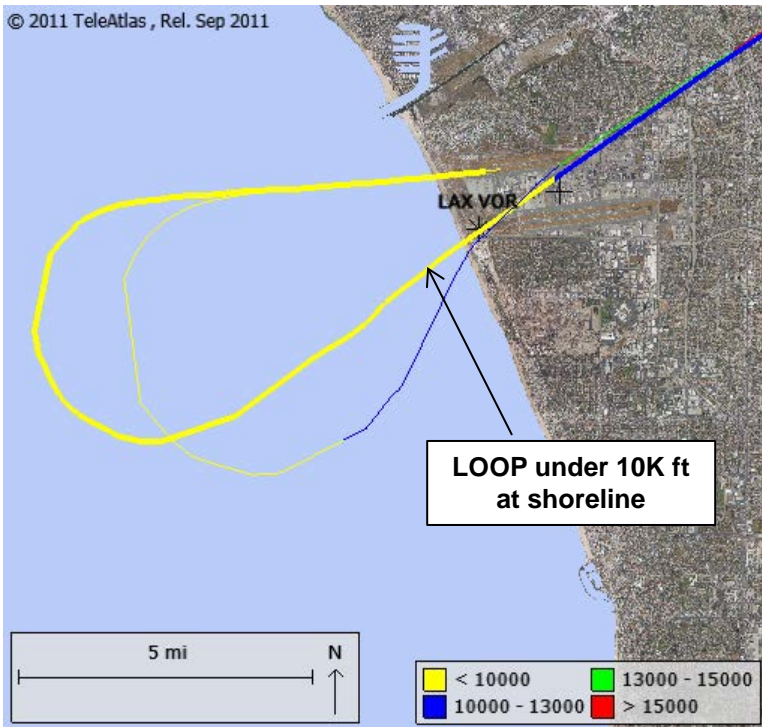
LAX/Community Noise Roundtable

Statistical information on the following operations:

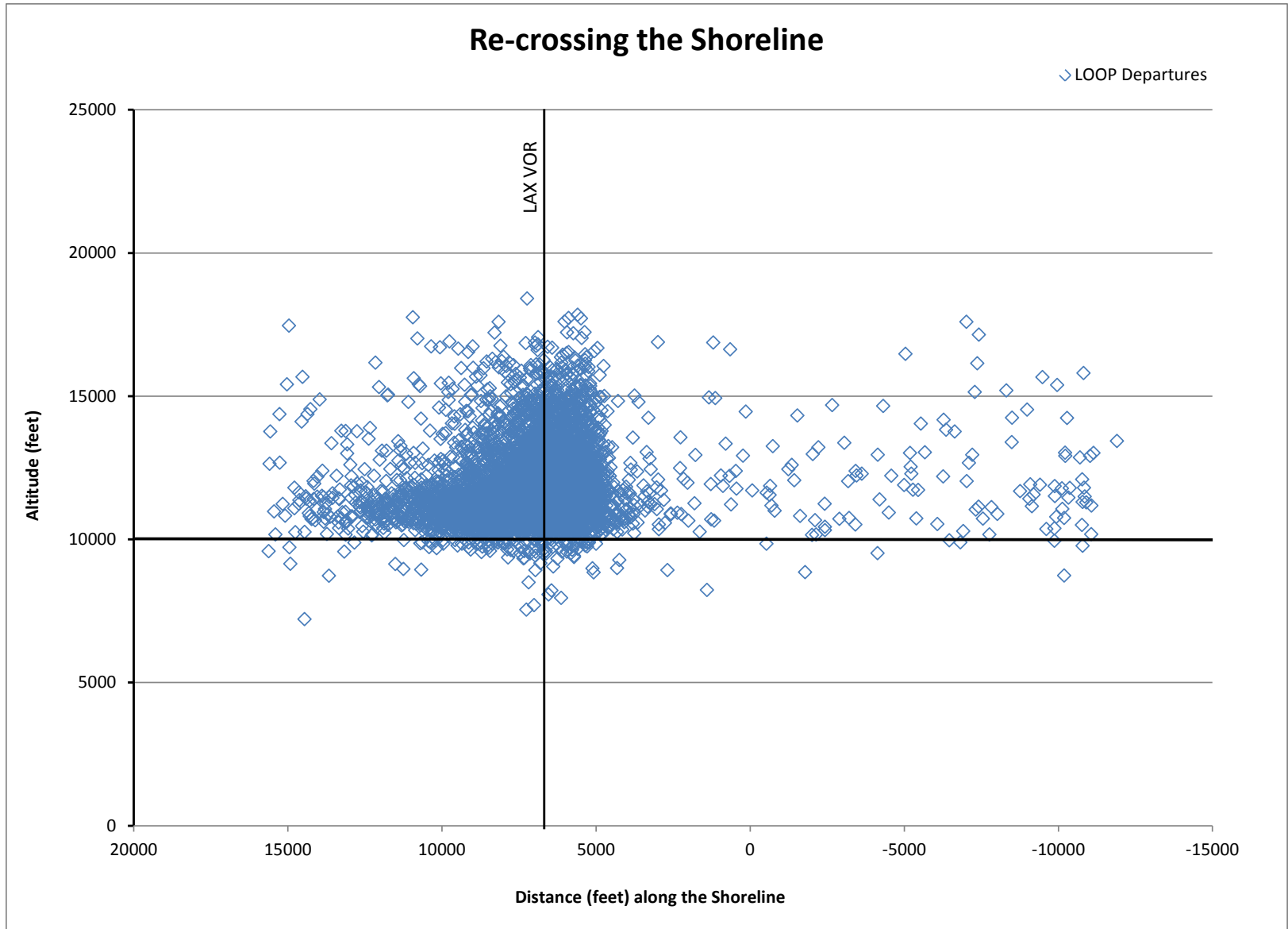
- Loop Departure
- Extended Downwind Approach
- Short Turn

LAX Loop Departure

Monitoring LOOP departures under 10,000 ft Altitude



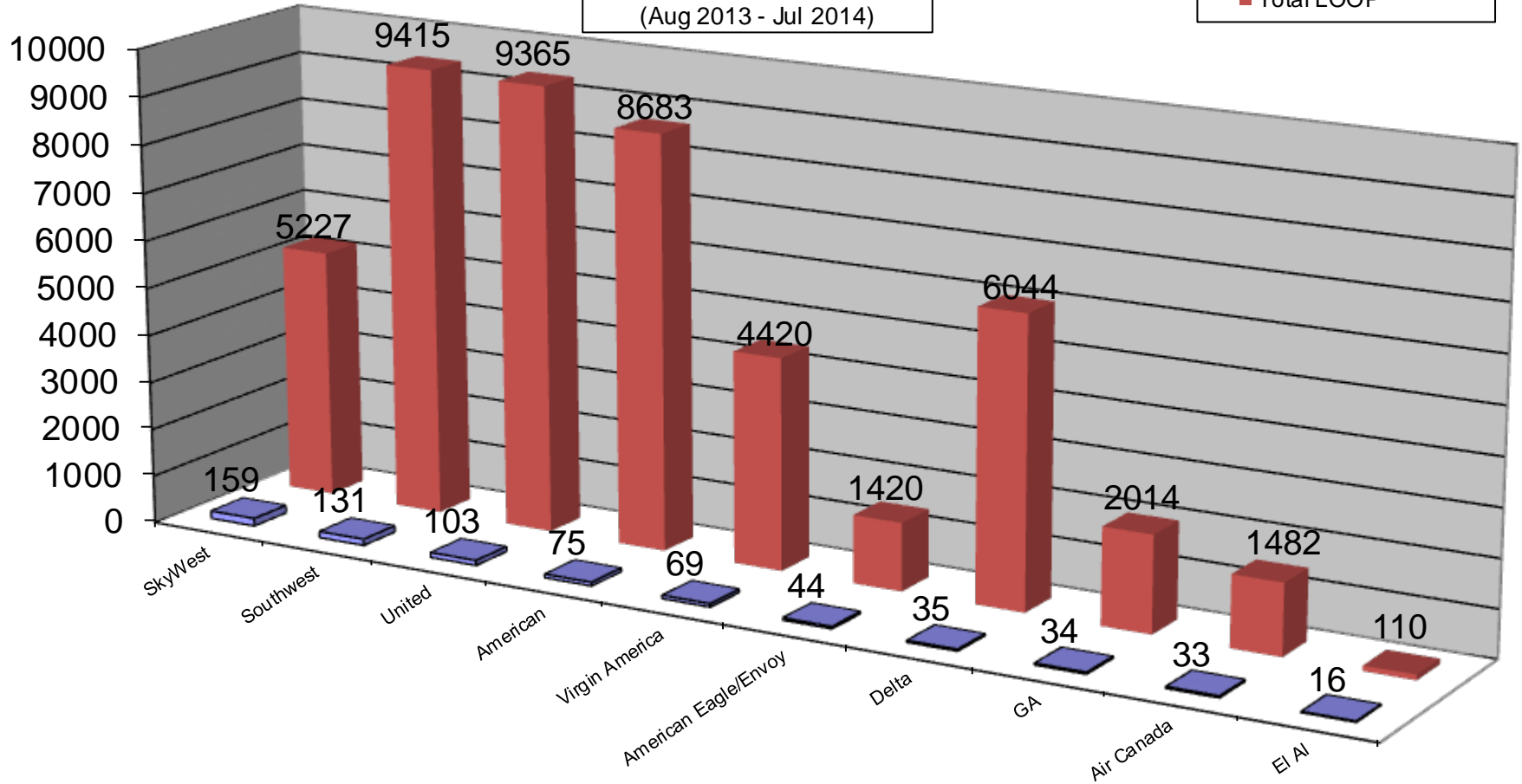
Loop Departure Altitude – July 2014



Loop Departure by Operator

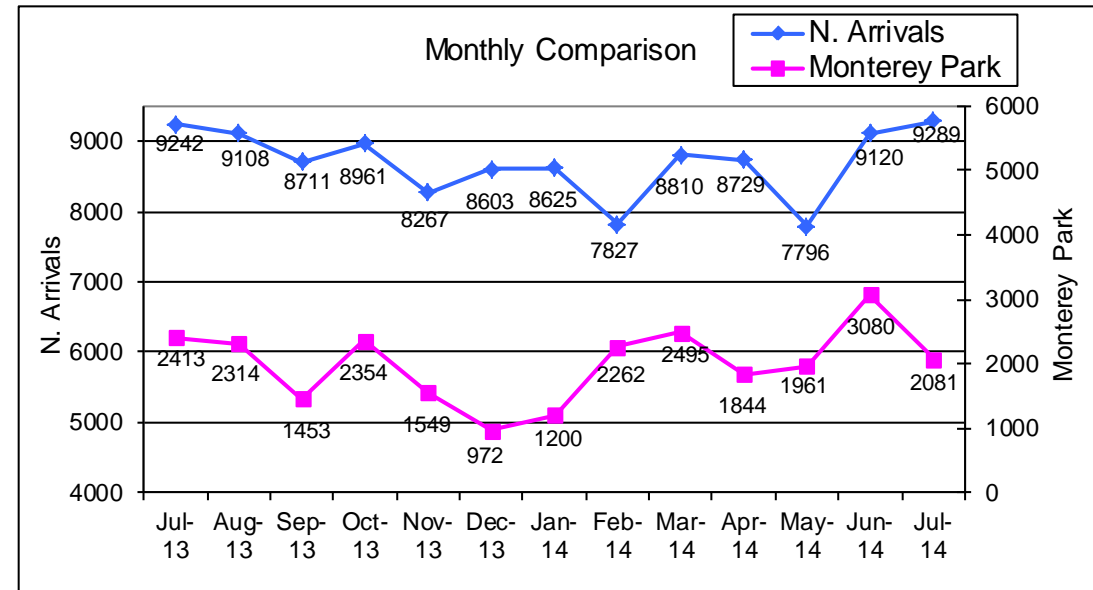
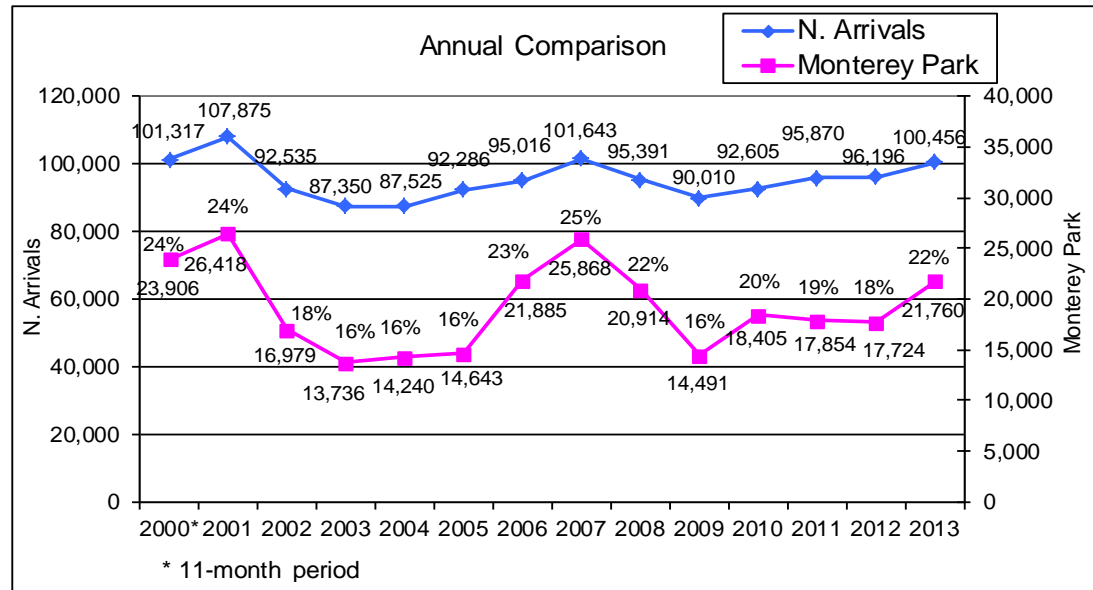
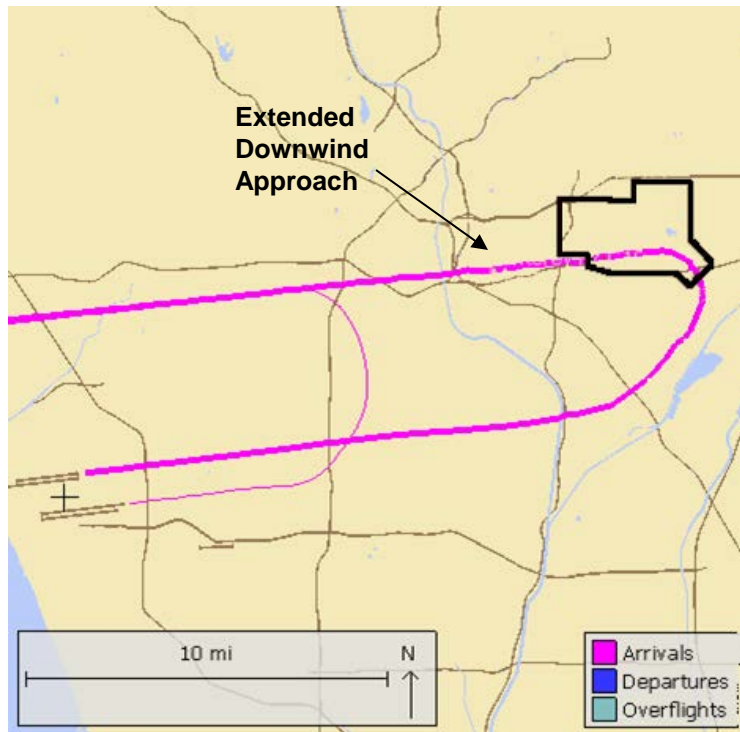
Top 10 Operators
One Year Period
(Aug 2013 - Jul 2014)

■ LOOP under 10K ft
■ Total LOOP

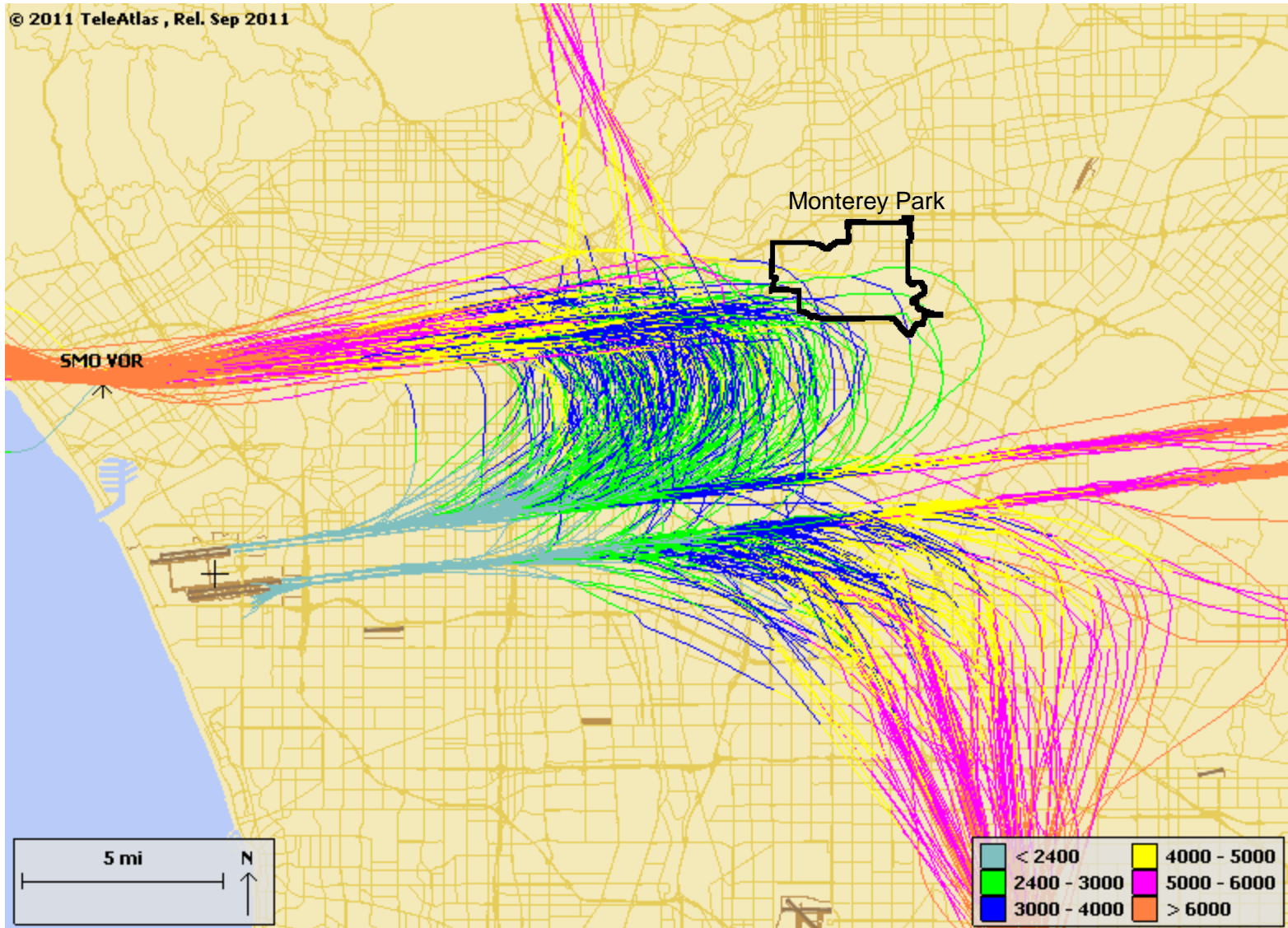


Extended Downwind Approach

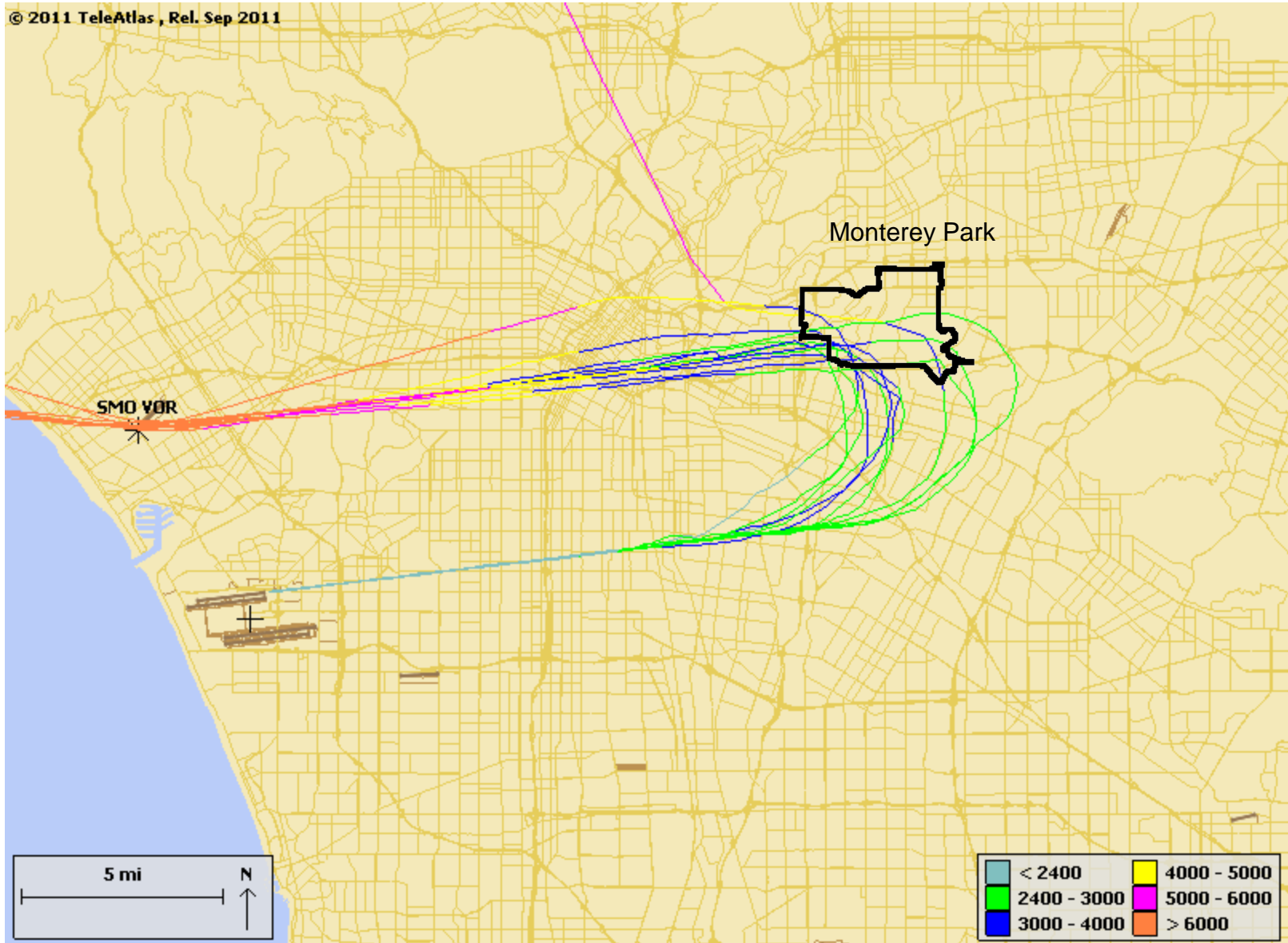
Monitoring north arrivals extending downwind over Monterey Park boundary



LAX Arrival Traffic One Day (7/5/14)

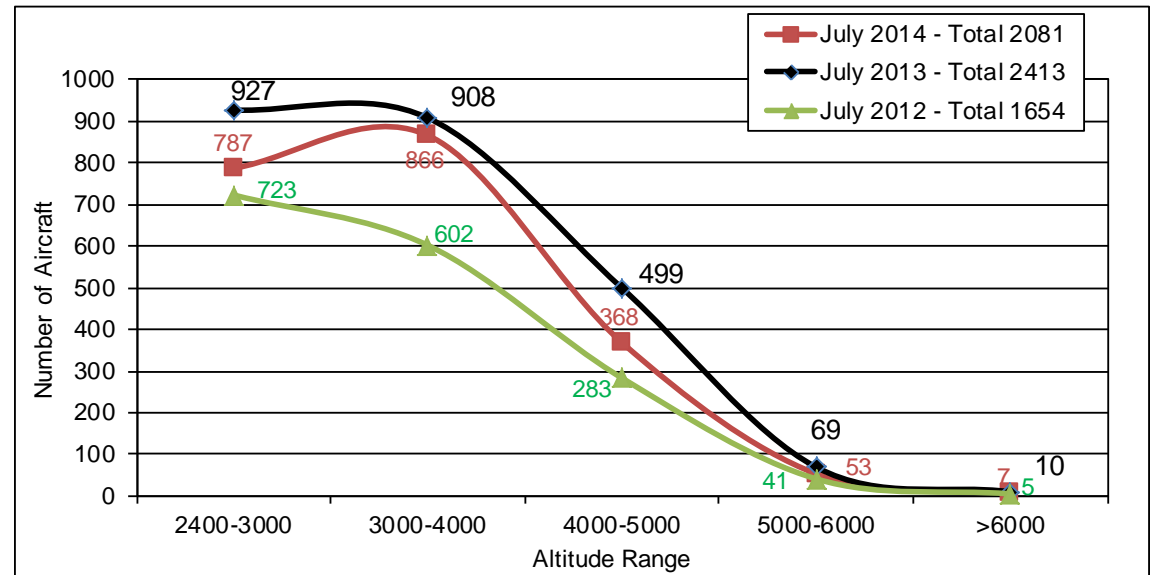


Monterey Park Overflights One Day (7/5/14)

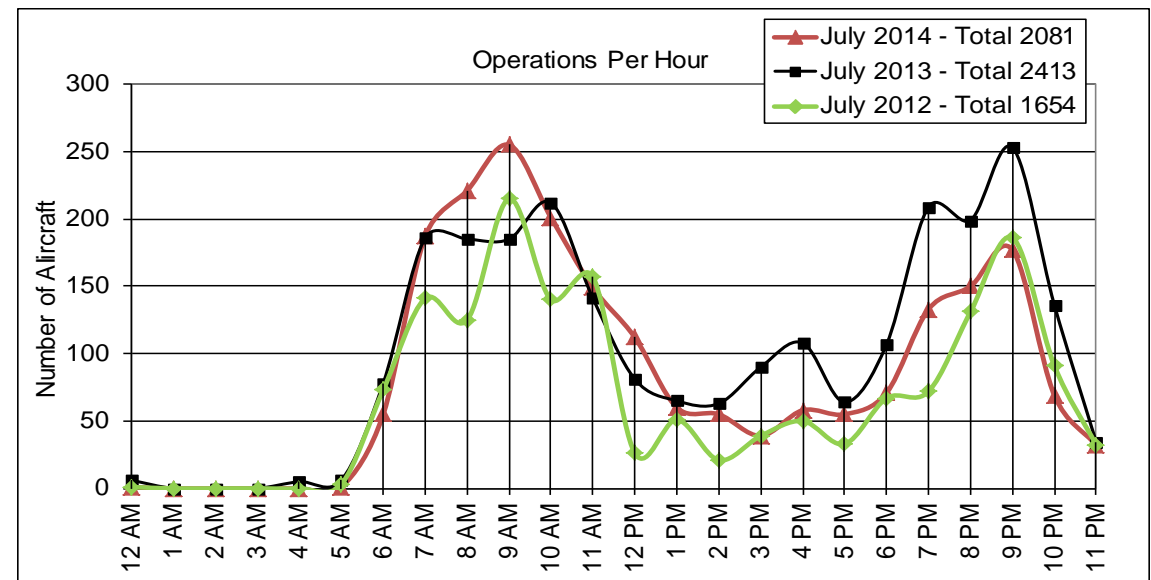


Extended Downwind Approach

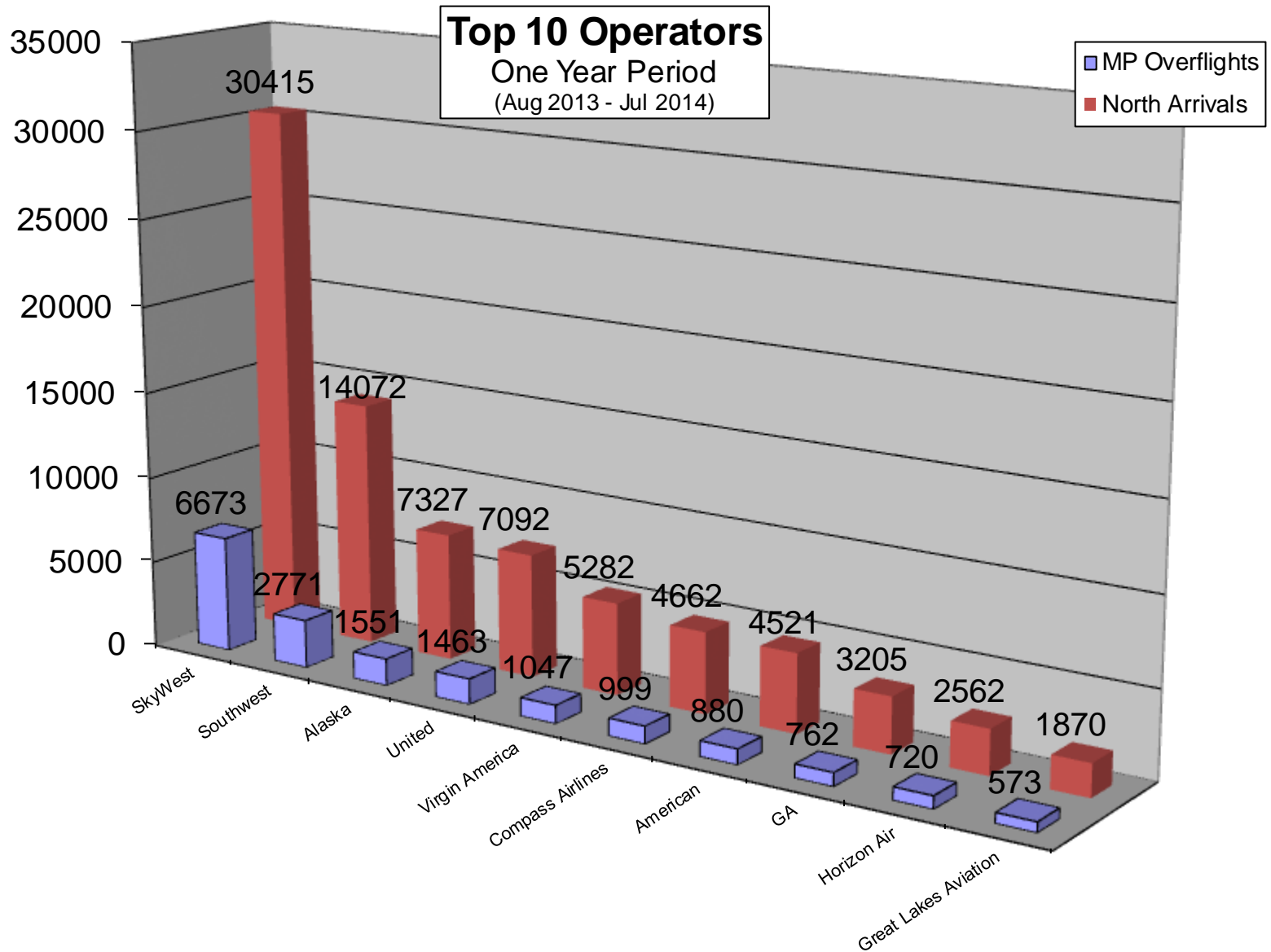
Altitude over Monterey Park



Number of Operations By Time of Day

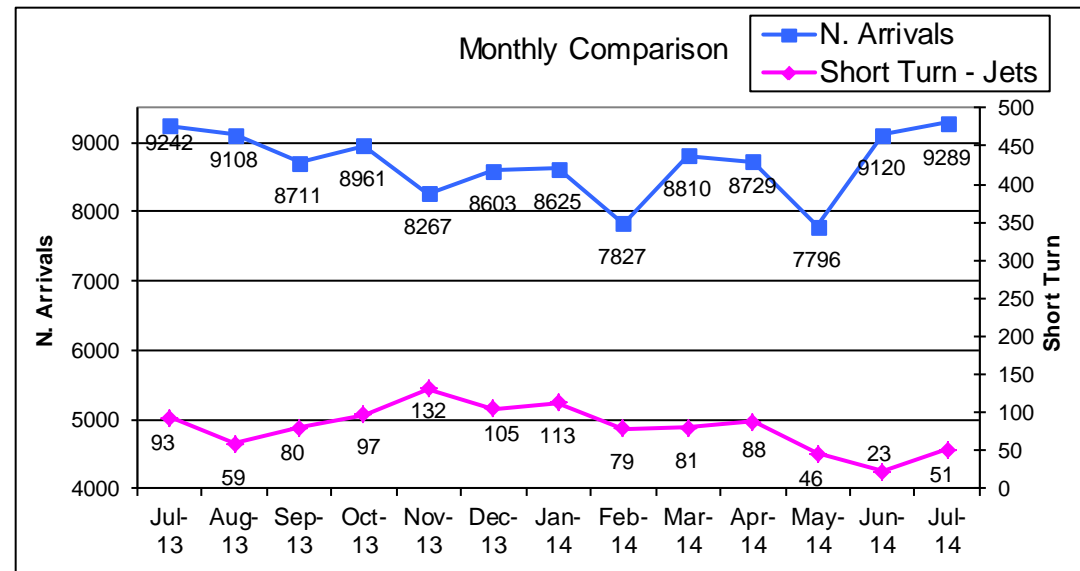
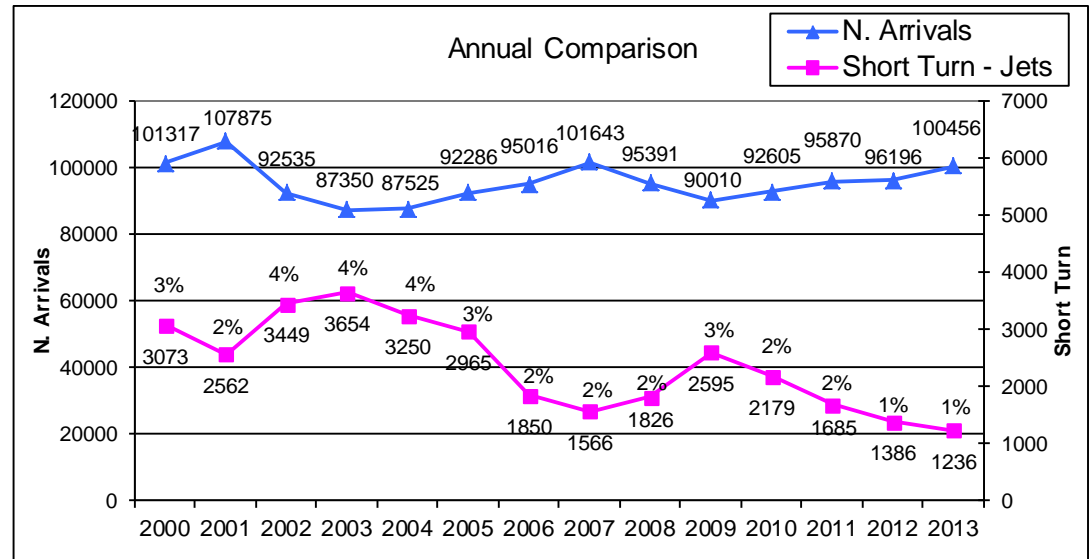
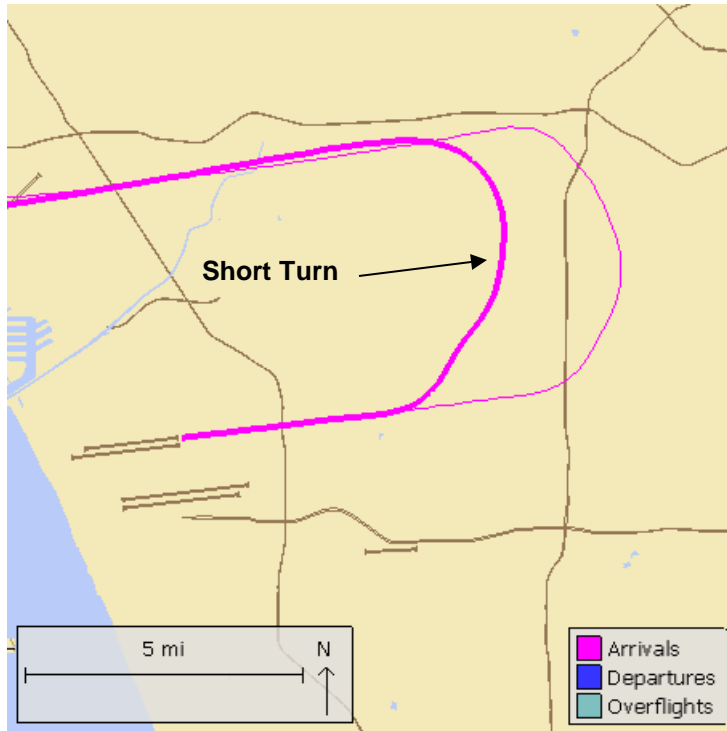


Extended Downwind Approach by Operator

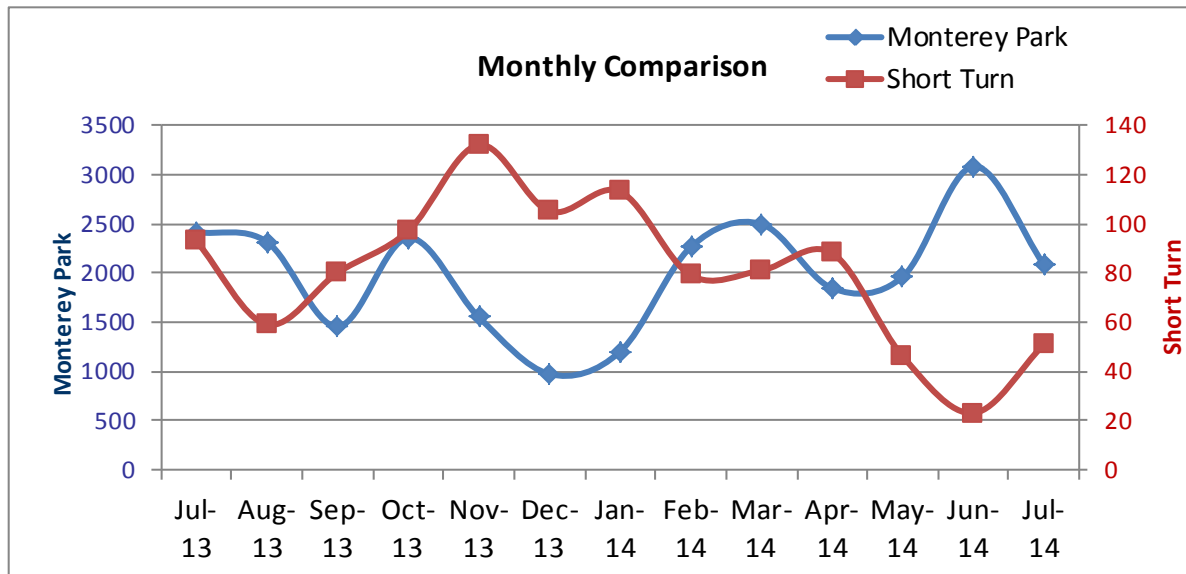
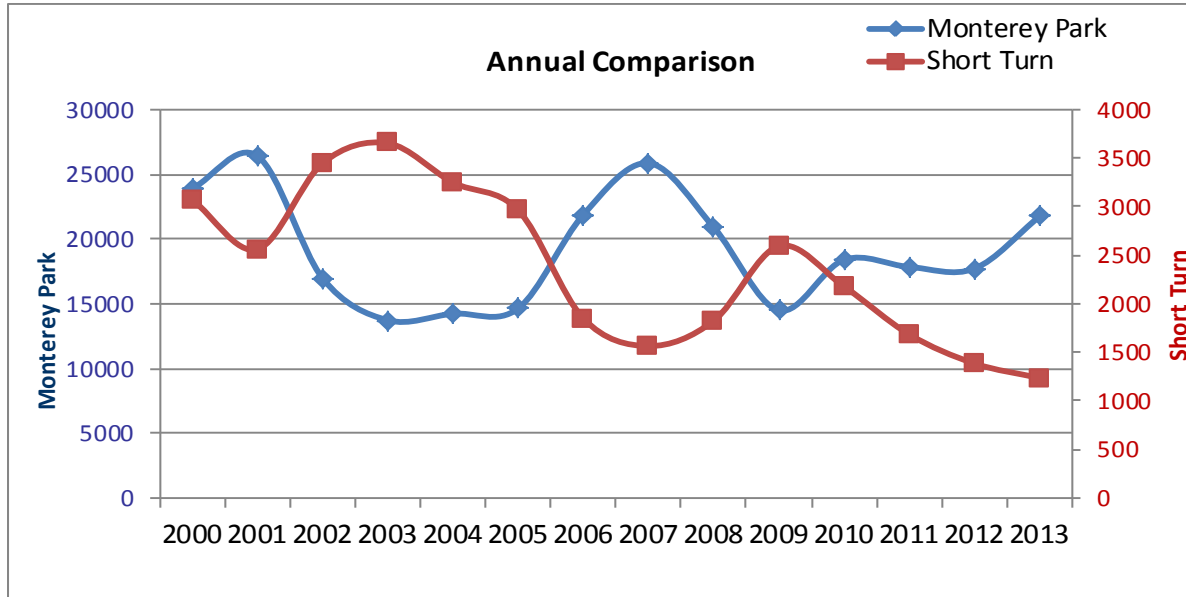


Short Turn

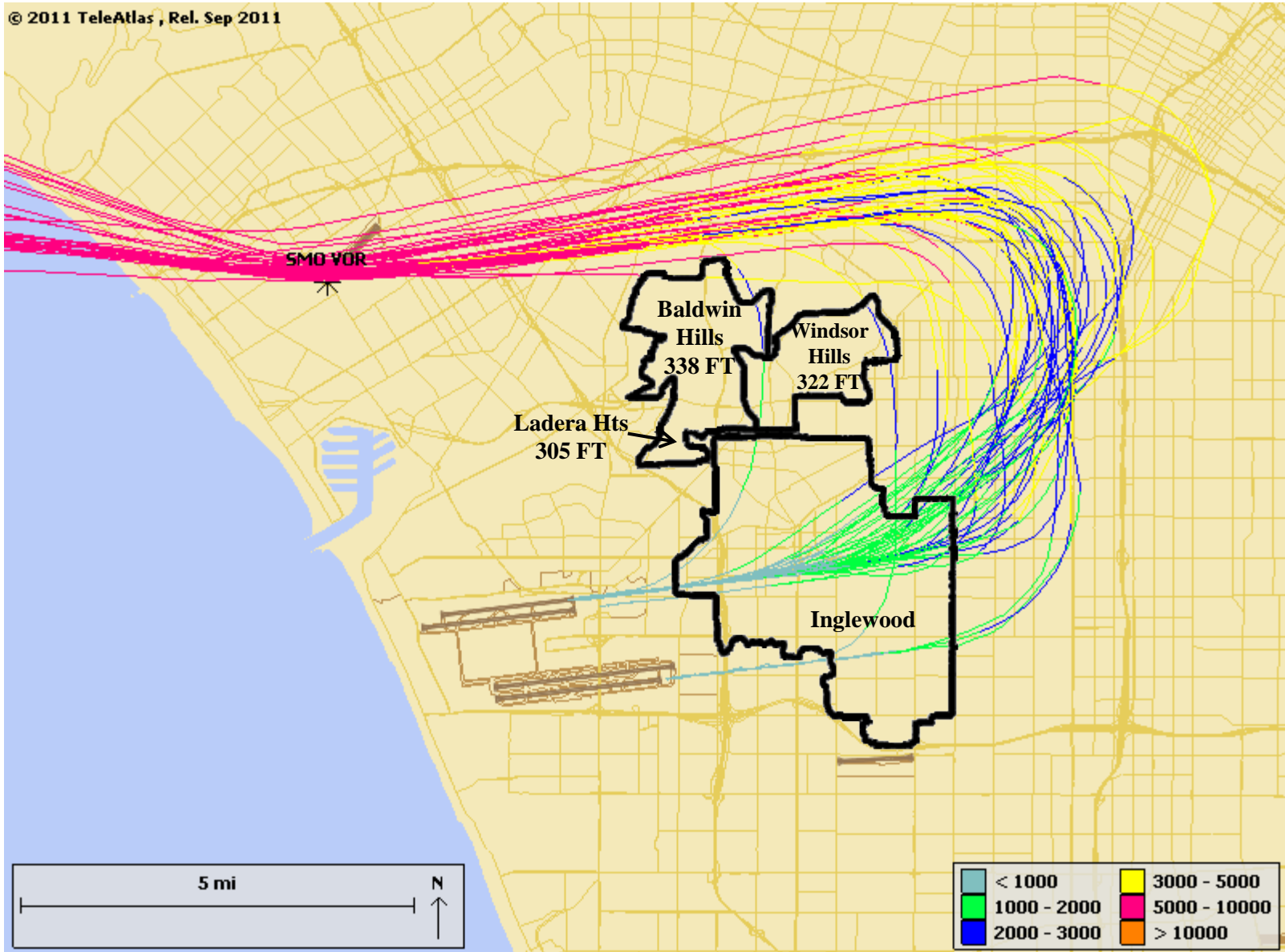
Arriving jet aircraft turning early prior to reaching the Harbor Freeway to land at LAX



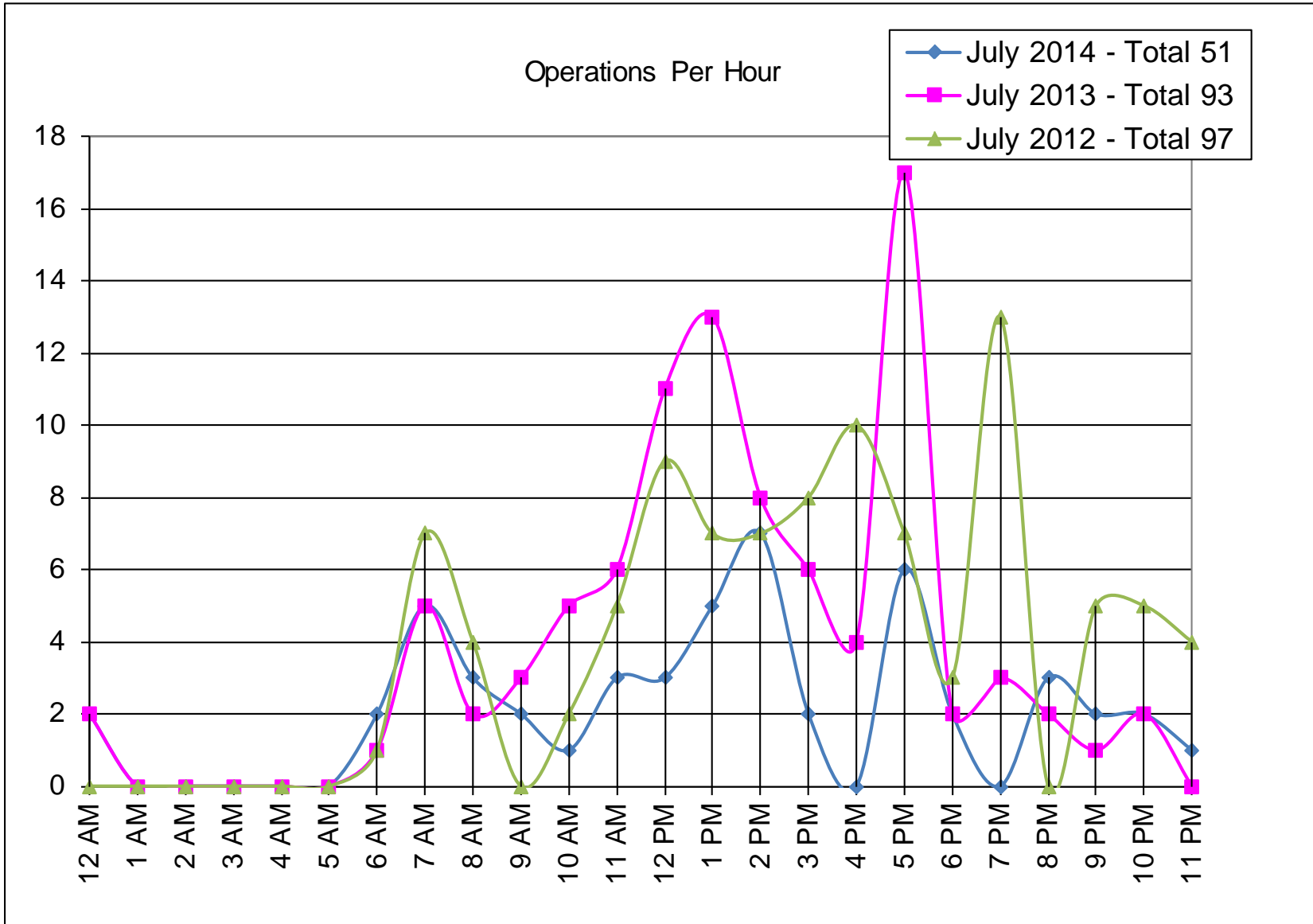
Inverse Relationship between Short Turn and Extended Downwind Approach



Short Turn Flight Tracks – July 2014



Short Turn – Time of Day



Short Turn by Operator

