



# Statistical Update on Aircraft Operations

May 14, 2014

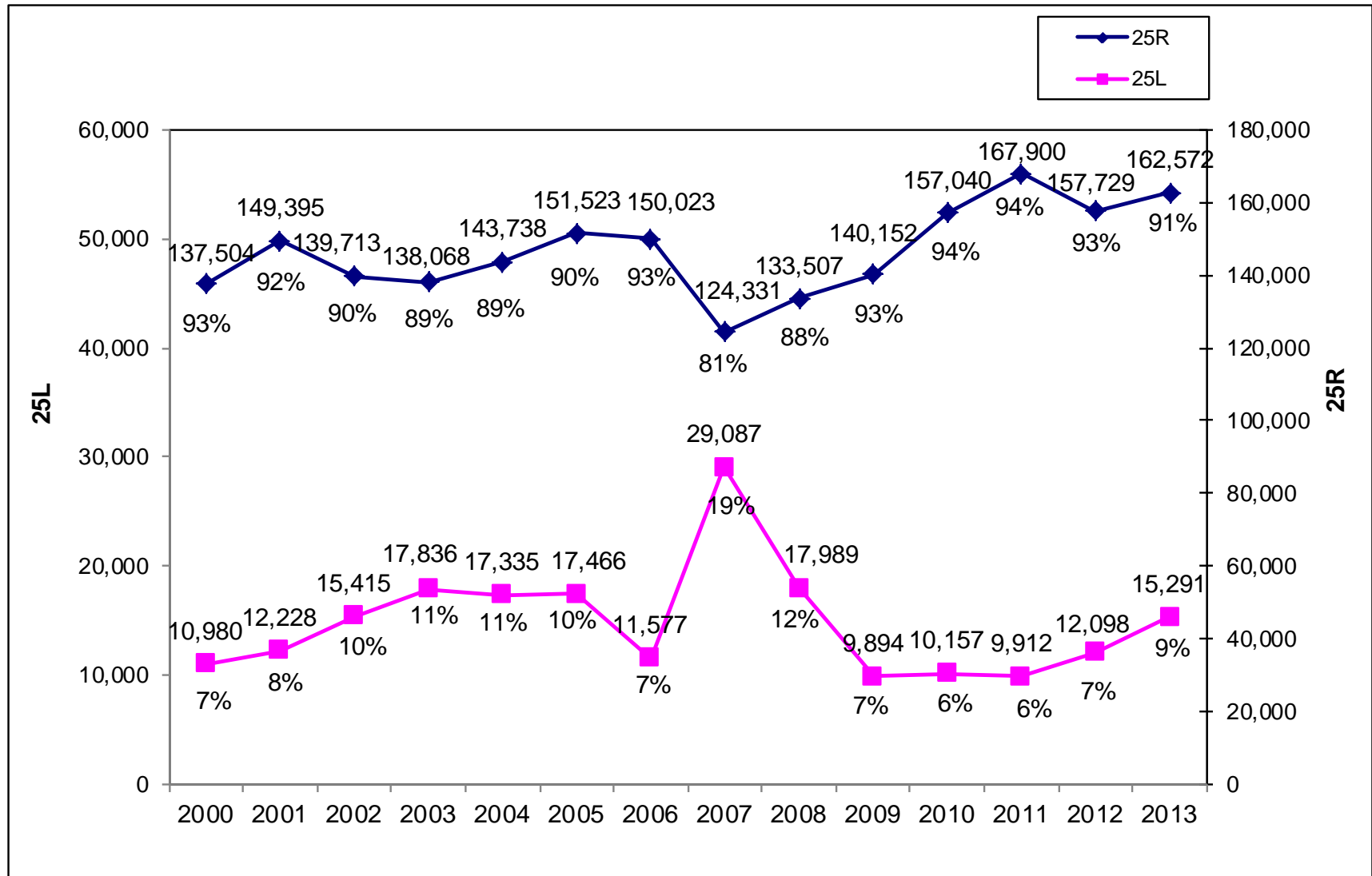
LAX/Community Noise Roundtable

# Overview

Statistical information on the following operations:

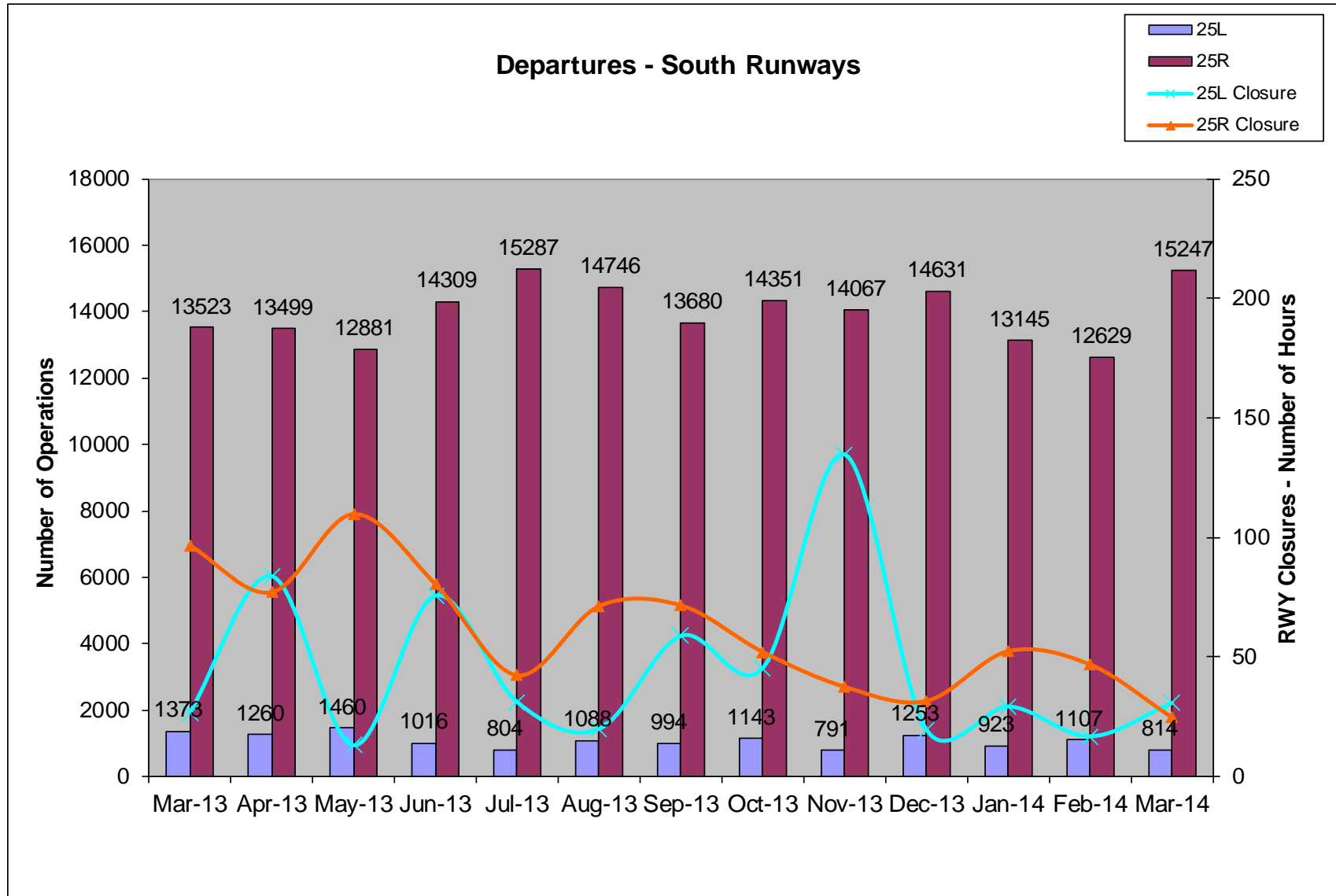
- 25L Departures
- Palos Verdes Overflights

# Departures – Runways 25L and 25R Annual Comparison

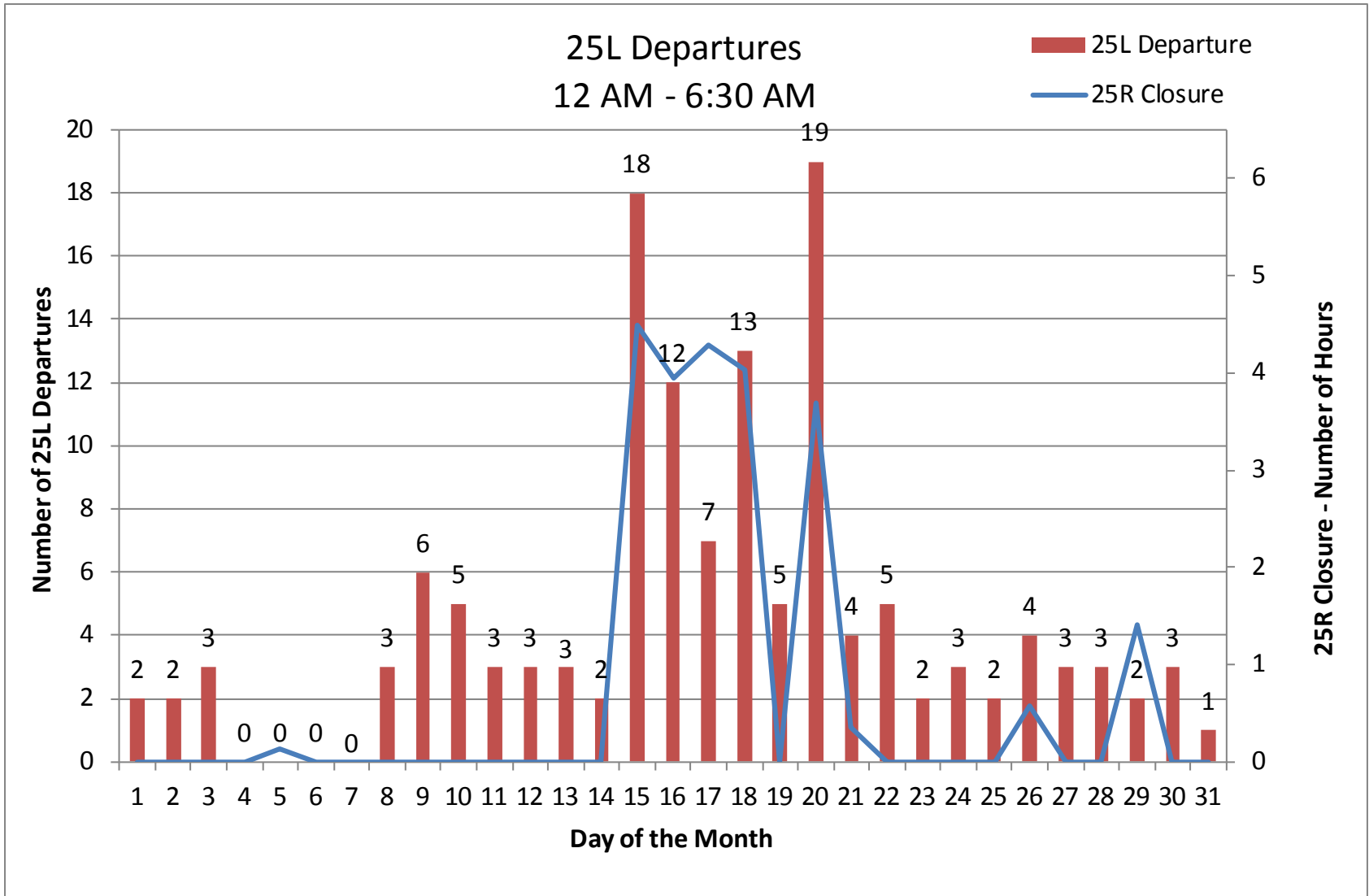


# Departures – Runways 25L and 25R

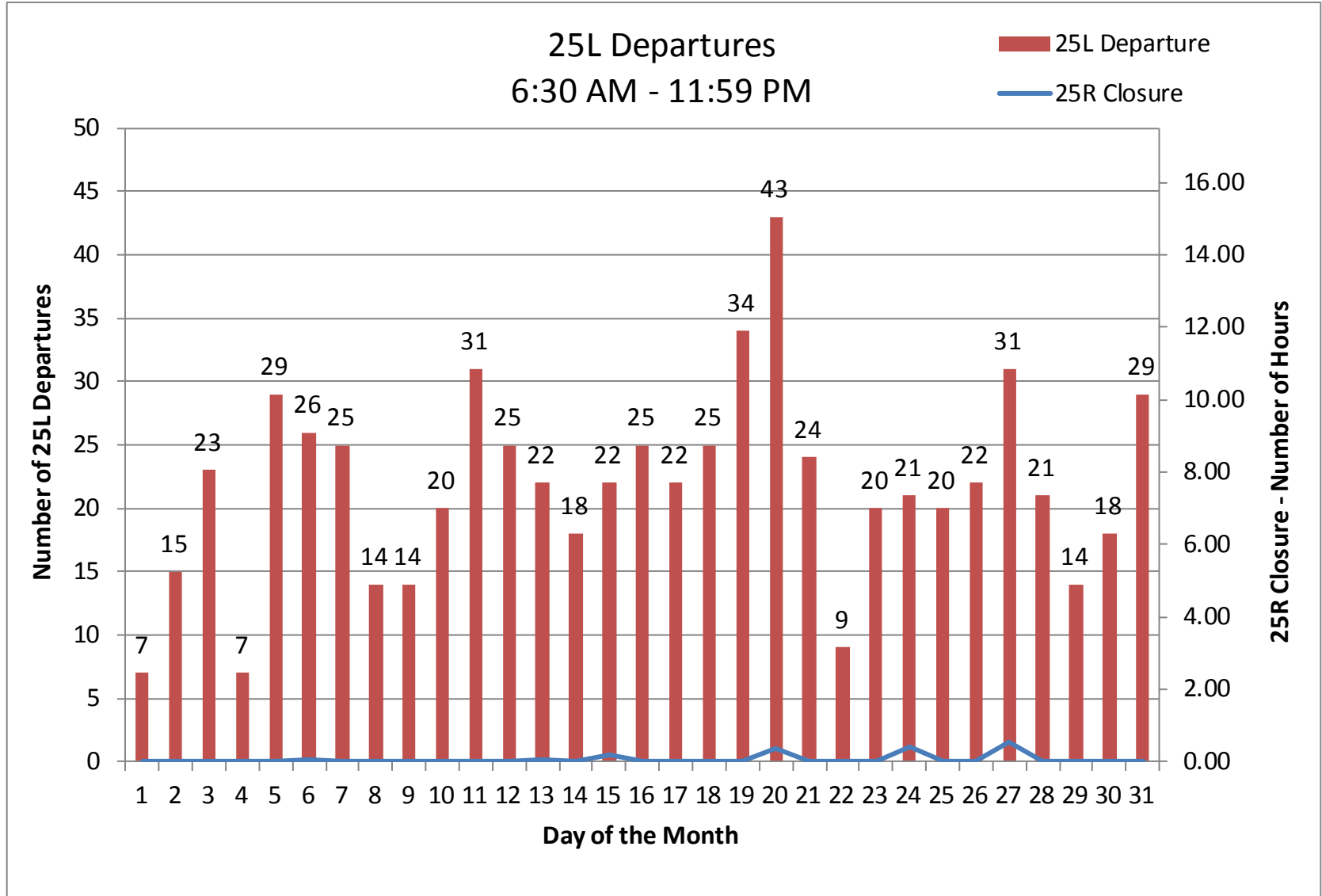
## 13-month period



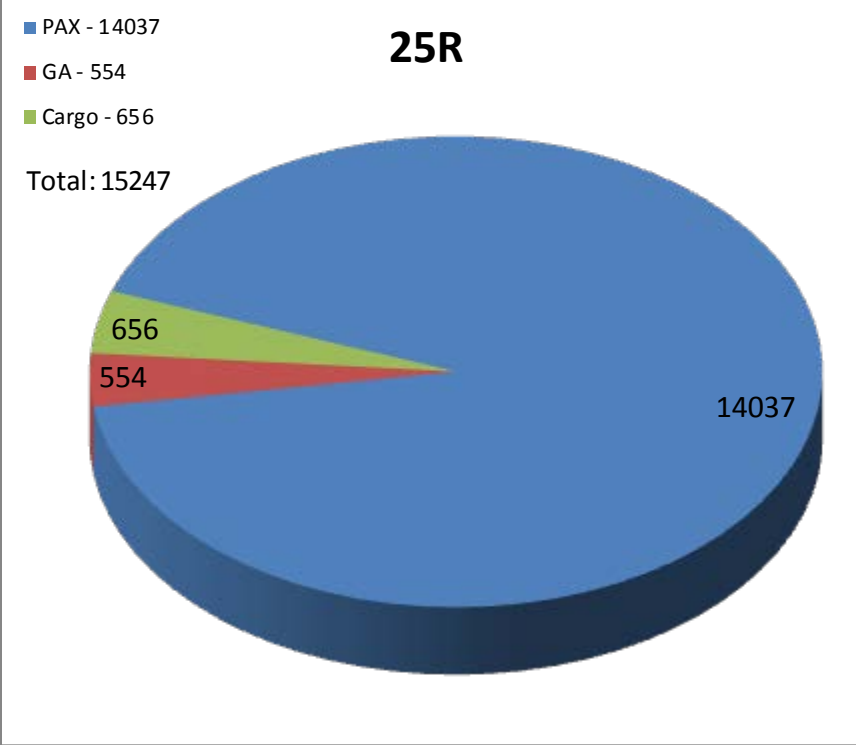
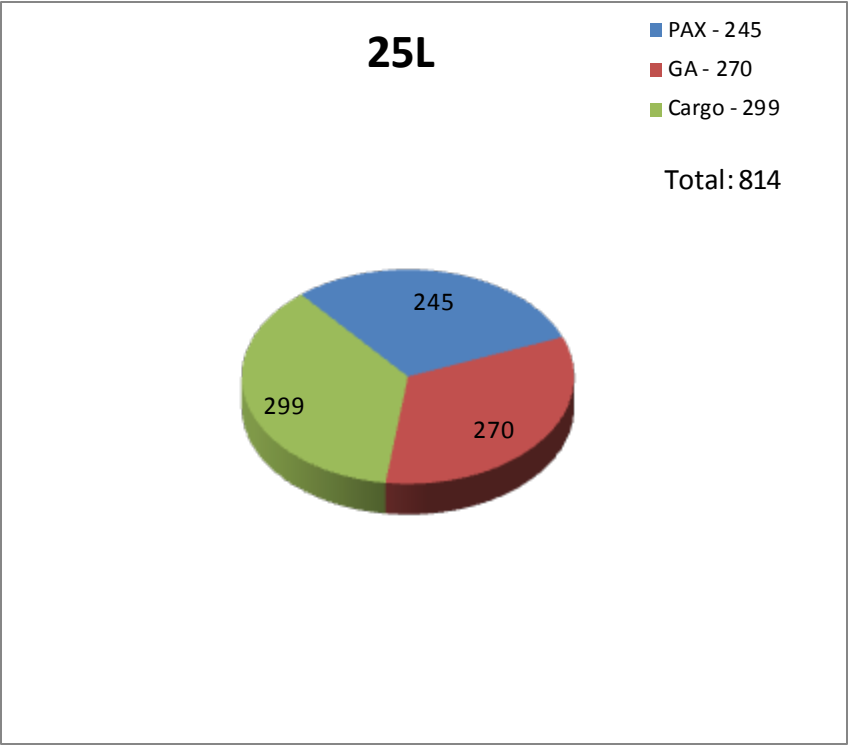
# 25L Departures March 2014



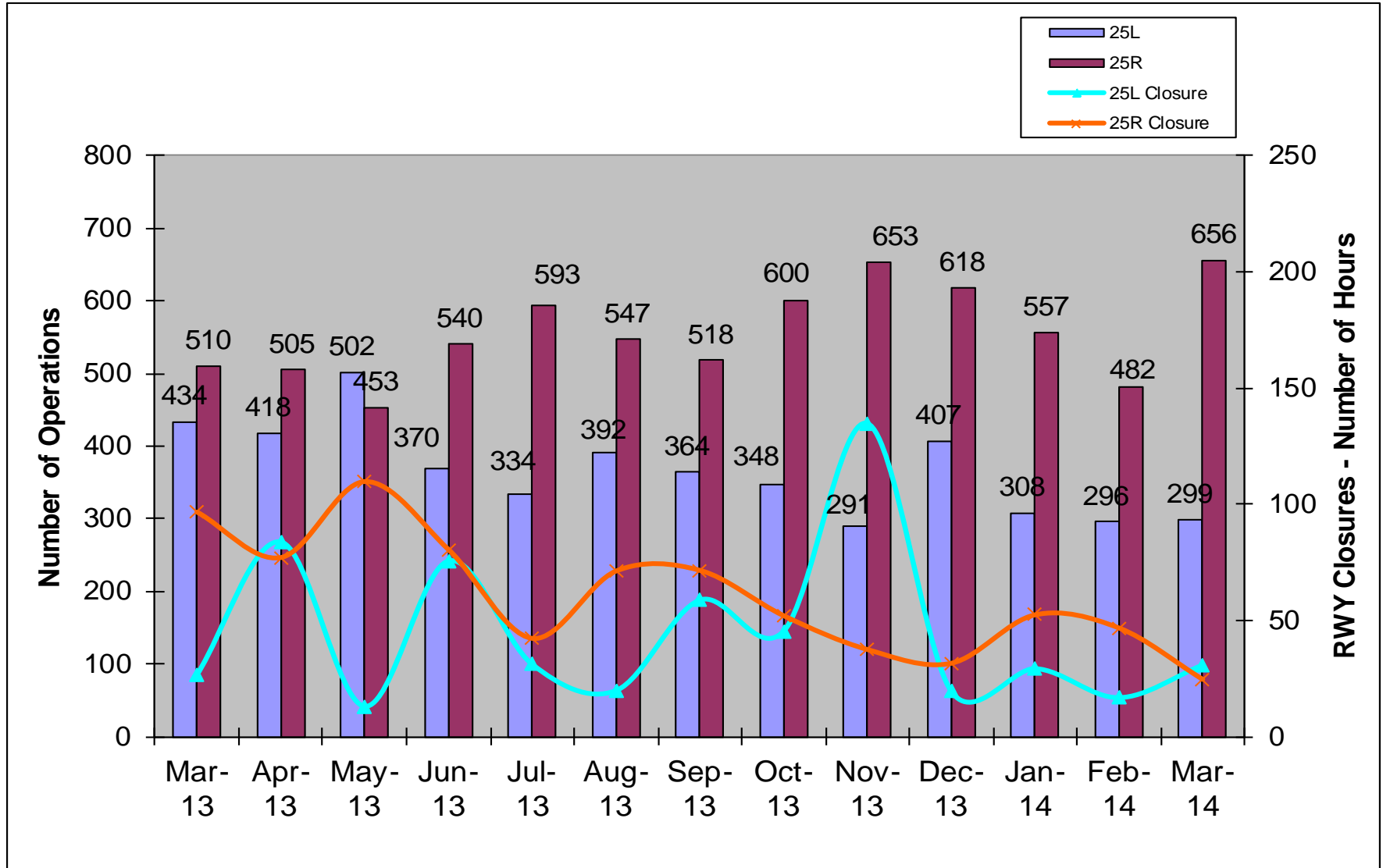
# 25L Departures March 2014



# Departure by Operator Type March 2014



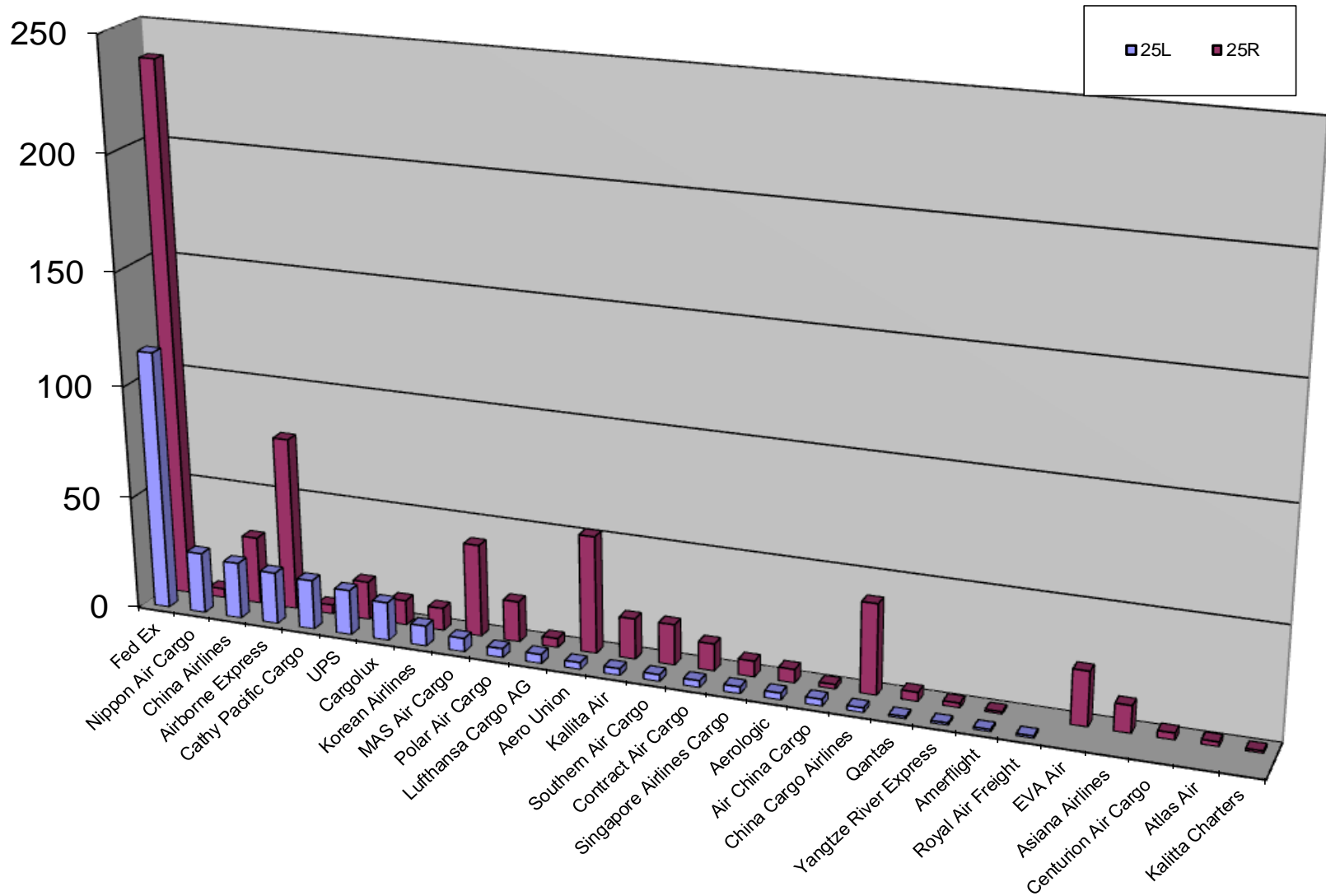
# Cargo Departures on 25L & 25R 13-month period



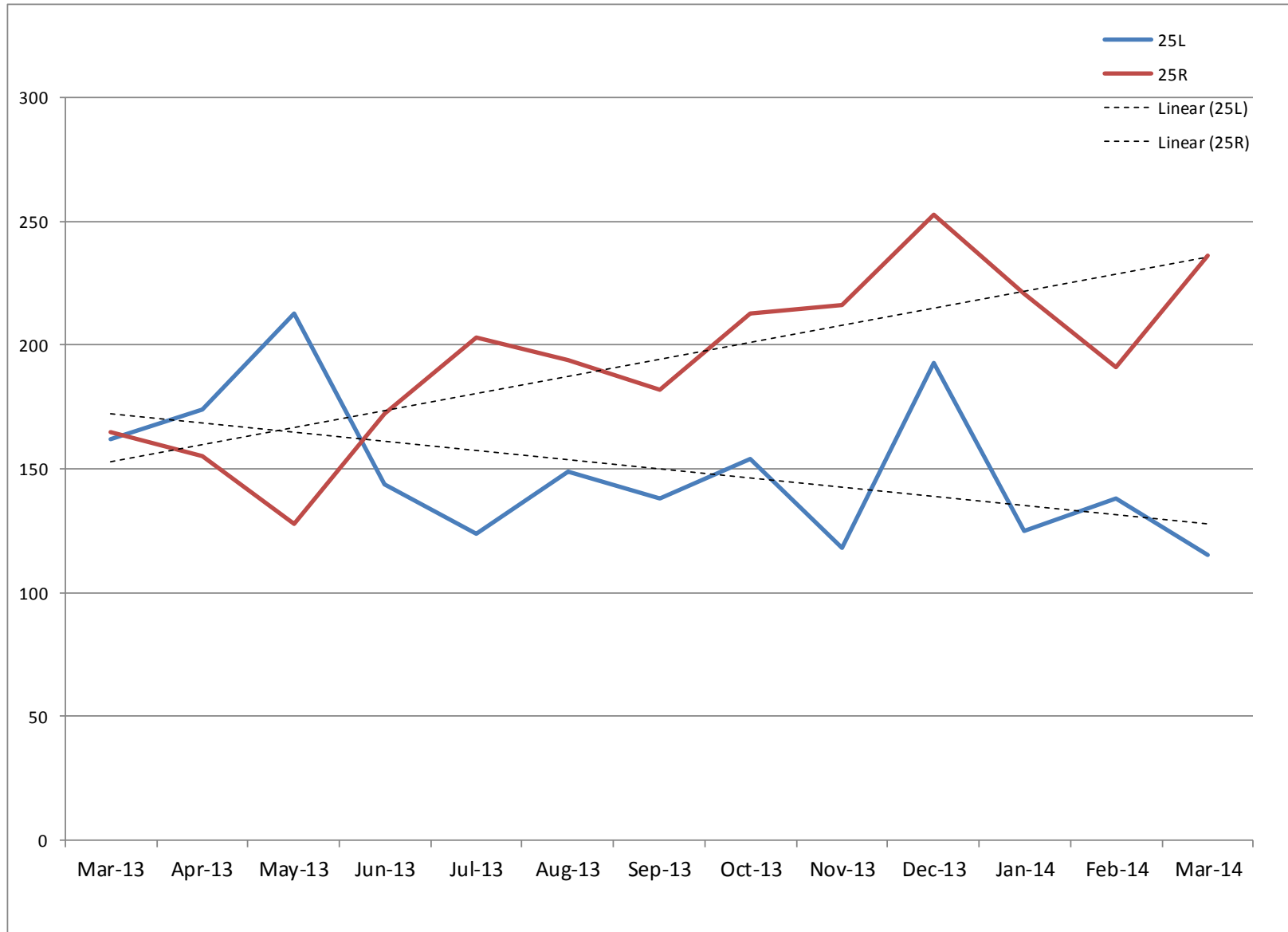


# Cargo Departures on 25L & 25R by Operator

## March 2014

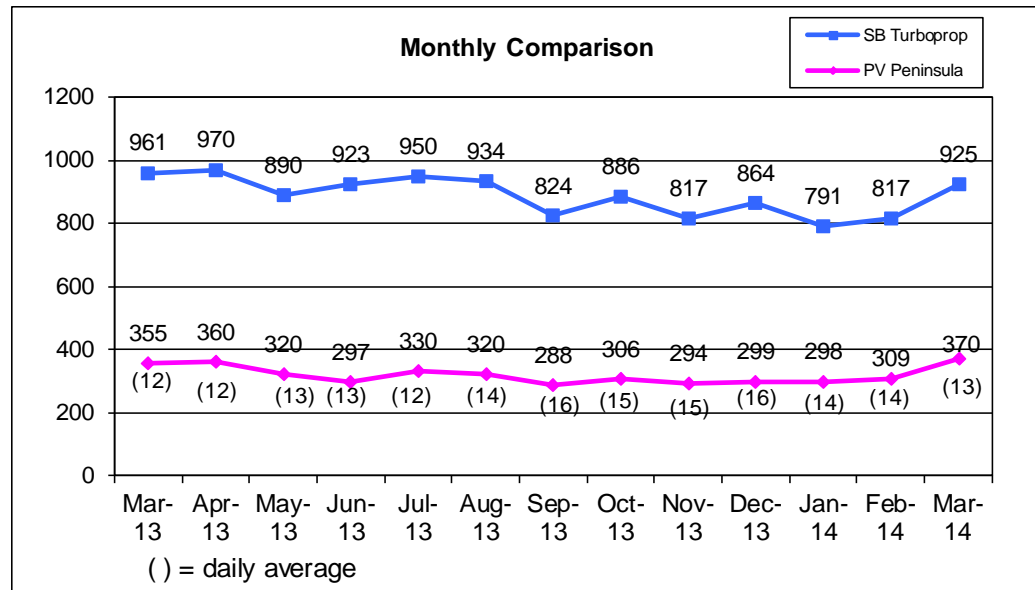
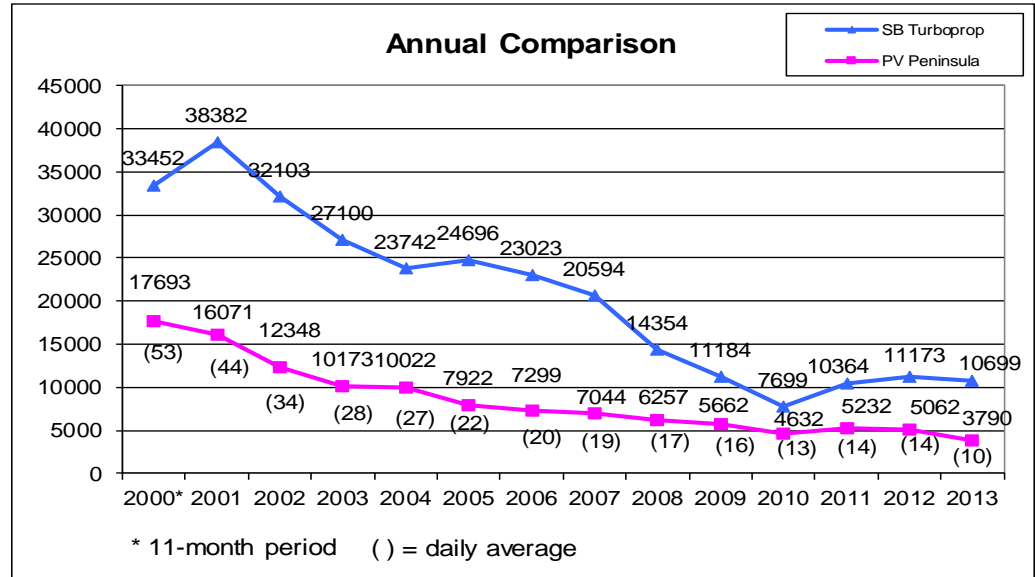
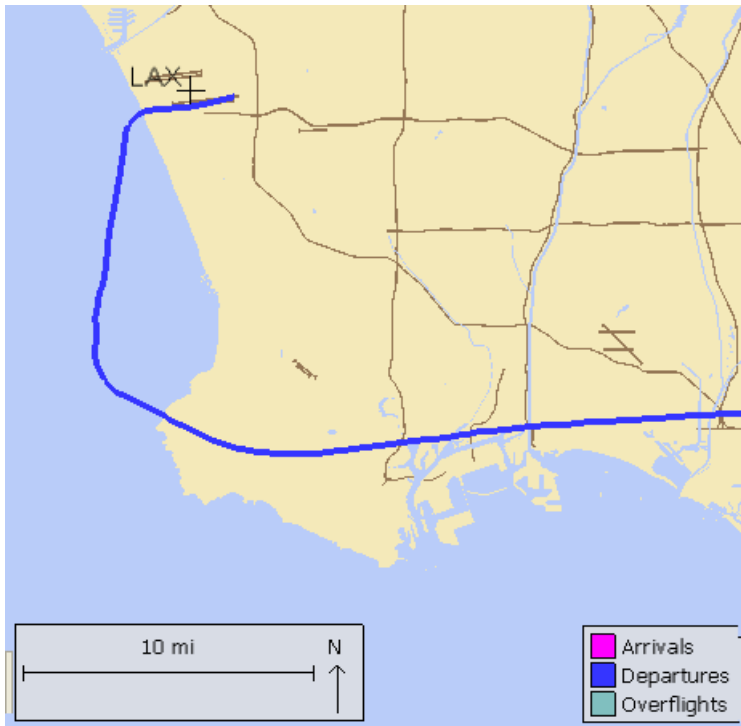


# Fed Ex Departures on 25L & 25R 13-month period

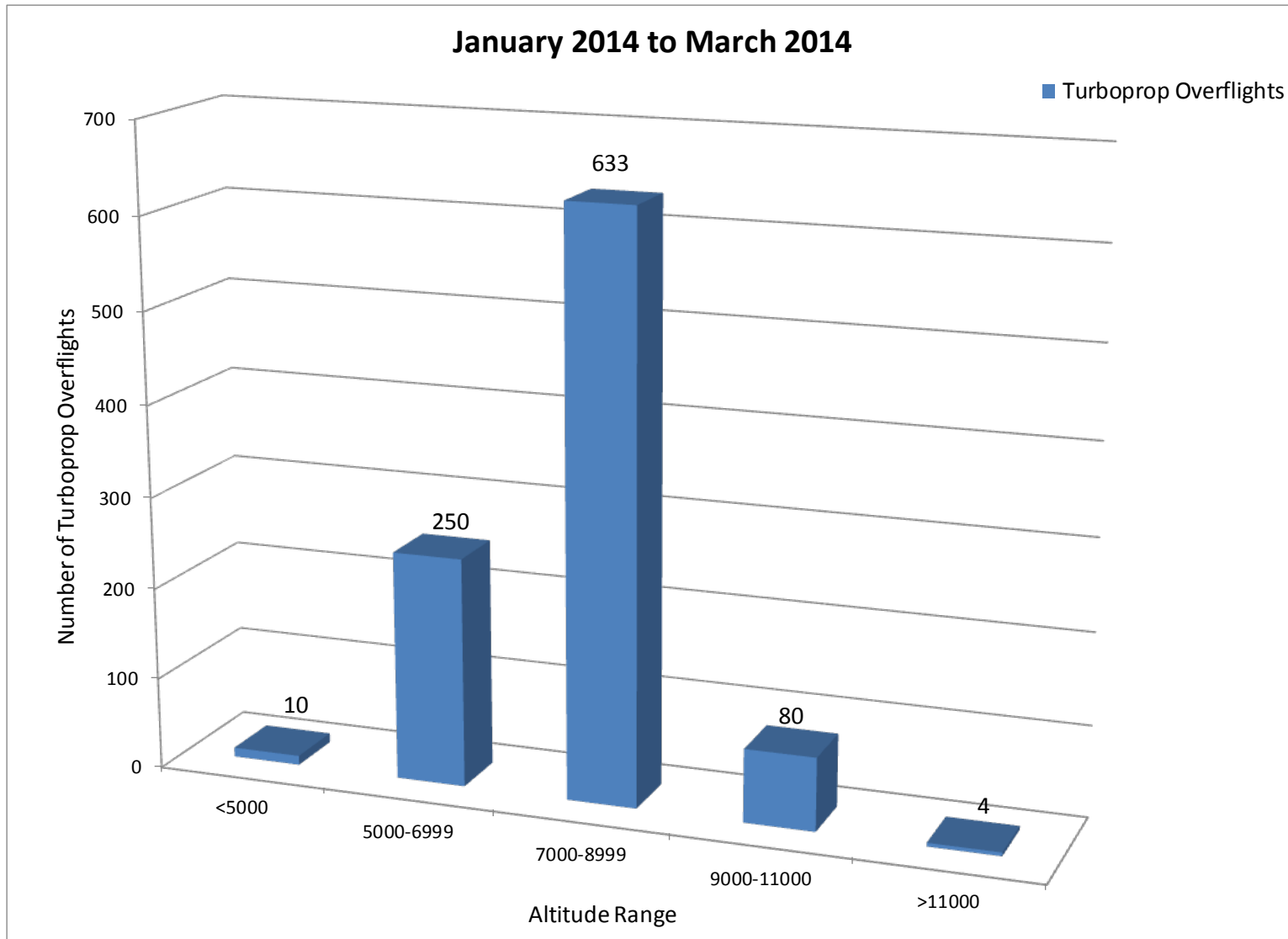


# Palos Verdes Peninsula – Turboprop Overflights

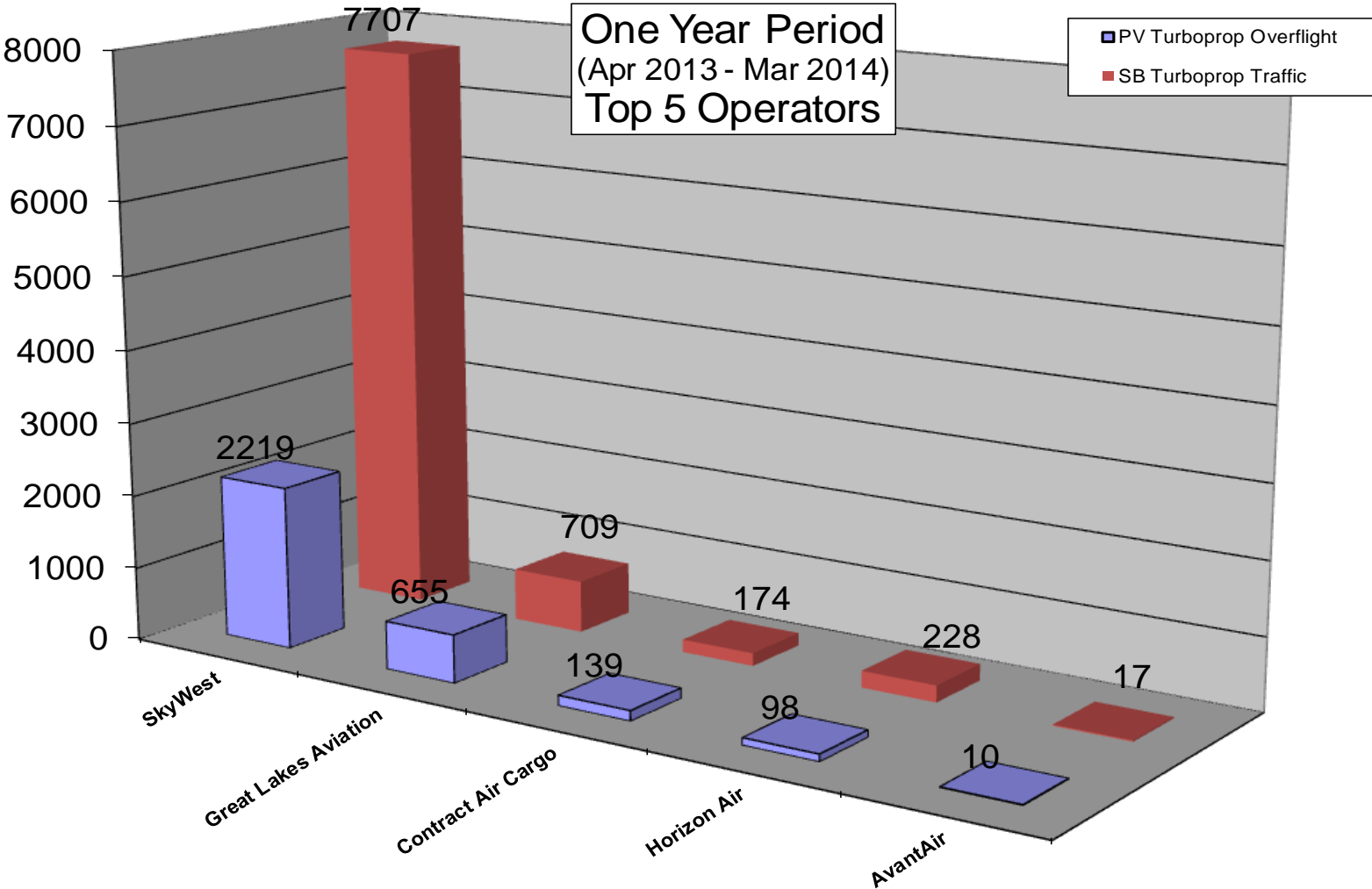
Monitoring southbound turboprops departing from LAX that overfly Peninsula



# Turboprop Altitudes over PV

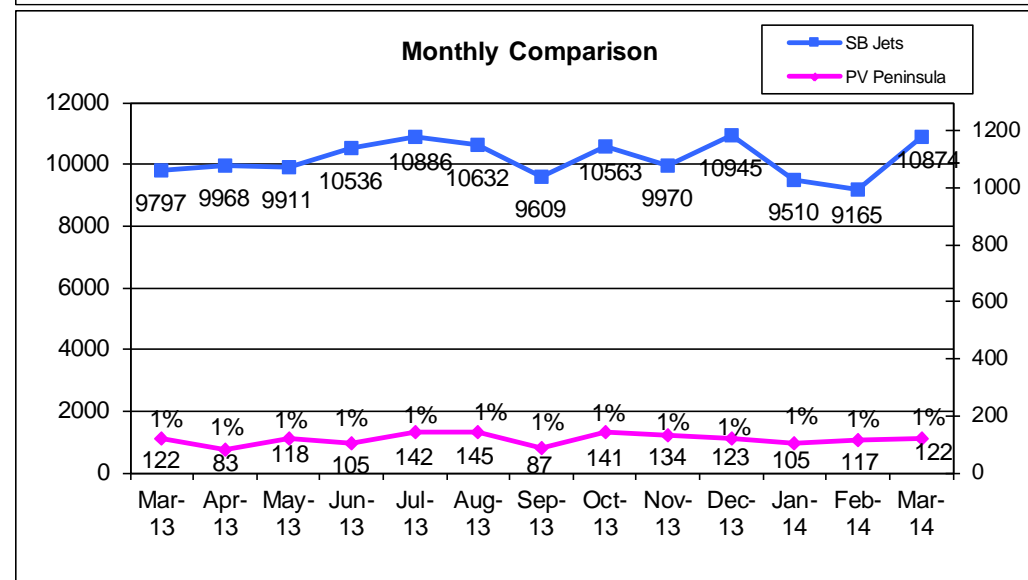
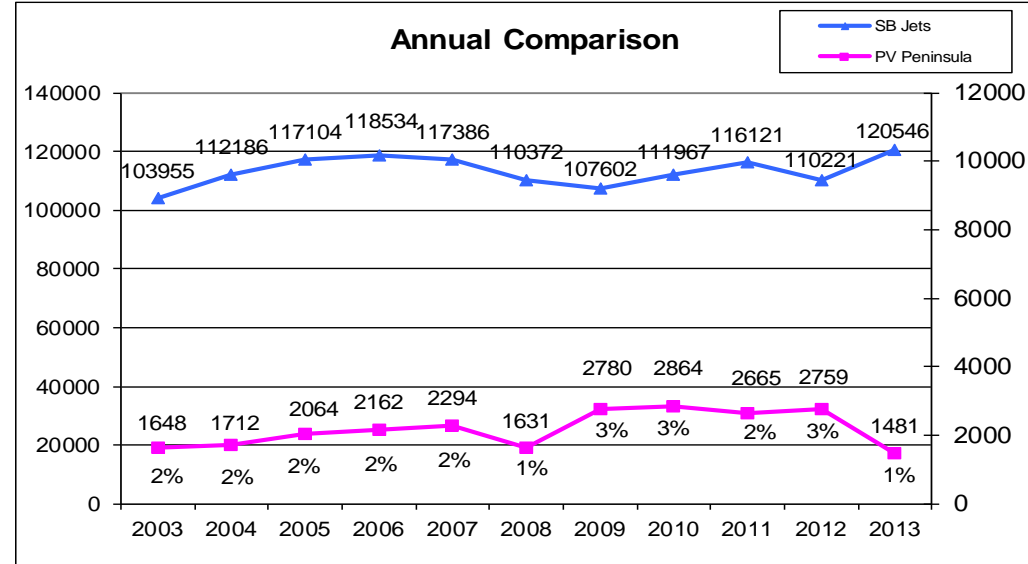
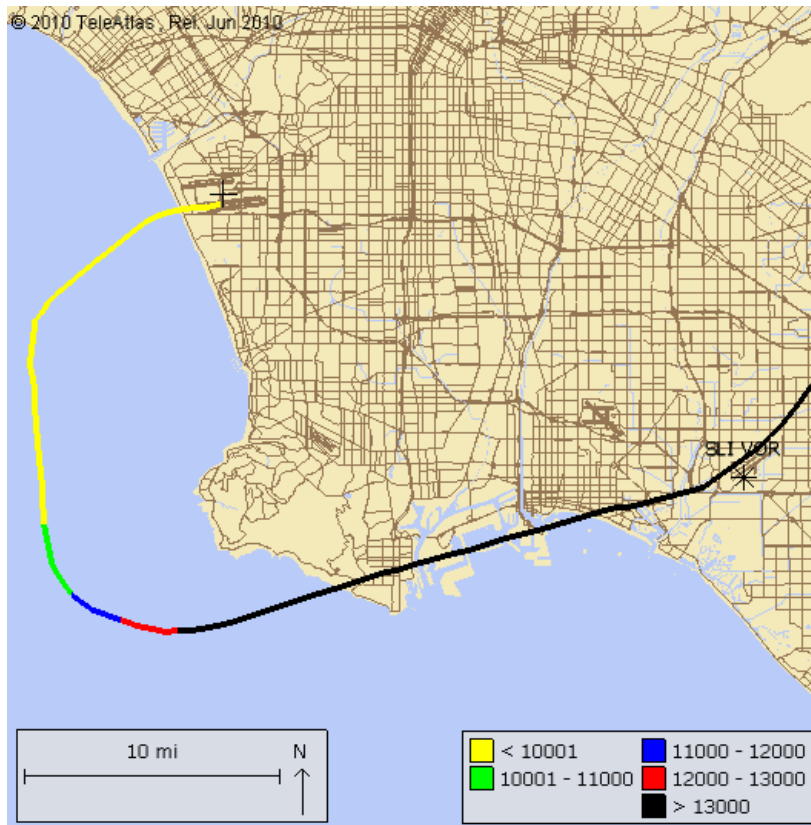


# Turboprop Operators



# Palos Verdes Peninsula – Jet Overflights

Monitoring southbound jets departing from LAX that overfly Peninsula



# Jet Altitudes over PV

