

California State Airport Noise Standards Quarterly Report

Fourth Quarter 2023



LOS ANGELES INTERNATIONAL AIRPORT

Los Angeles World Airports

February 8, 2024

TABLE OF CONTENTS

California State Airport Noise Standards Quarterly Report

1. Division of Aeronautics Form 617
2. Incompatible Land Use Data
3. Daily Aircraft CNEL Data
4. Runway Utilization Report
 - Summary of Runway Use
 - Summary of Runway Flow
5. Average Daily Runway Use by Aircraft Type
 - 24 Hour Average
 - Night-time Average (10pm – 7am)
6. Average Daily Runway Use by Aircraft Group
 - 24 Hour Average
 - Night-time Average (10pm – 7am)
7. Summary of Actions

Attachment

Noise contour map

**SUMMARY OF STATISTICAL INFORMATION
FOR
CALIFORNIA DEPARTMENT OF TRANSPORTATION**

Los Angeles International Airport
Fourth Quarter 2023

1. Size of Noise Impact Area as defined in the Noise Standards (California Code of Regulations, Title 21, Chapter 2.5, Subchapter 6):

368.9 Acres

2. Estimated number of dwelling units included in the Noise Impact Area as defined in the Noise Standards:

4,626

3. Estimated number of people residing within the Noise Impact Area as defined in the Noise Standards:

15,263

4. Identification of aircraft type having highest takeoff noise level operating at this airport together with estimated number of operations by this aircraft type during the calendar quarter reporting period:

B747: 2,732

5. Total number of aircraft operations during the calendar quarter*:

145,816

6. Number of Air Carrier operations during the calendar quarter: (Not Mandatory)*

137,449

7. Percentage of Air Carrier operations by aircraft certificated under Federal Aviation Regulation (FAR) Part 36, Stage III. (Not Mandatory)

100 %

8. Estimated number of operations by General Aviation aircraft during the calendar quarter: (Not Mandatory)*

3,295

9. Estimated number of operations by Military aircraft during the calendar quarter: (Not Mandatory)*

143

LOS ANGELES INTERNATIONAL AIRPORT

Incompatible Land Use

Annual Noise Impact Accumulated by Noise Zone: CNEL 65, 70, and 75 +

4Q23	Total Cumulative Noise Impact Areas - All Jurisdictions											
	<i>CNEL 65 dB and Above</i>				<i>CNEL 70 dB and Above</i>				<i>CNEL 75 dB and Above</i>			
Land Use	Acres	Dwelling Units	Parcels	Population	Acres	Dwelling Units	Parcels	Population	Acres	Dwelling Units	Parcels	Population
Single Family	176.3	1,214	1,243	4,120	33.3	221	224	831	0.5	1	1	4
Multi-Family	166.7	3,395	1,022	11,106	35.4	633	236	2,177	0.4	2	1	8
Mobile Home	0.6	0	2	0	0.0	0	0	0	0.0	0	0	0
Schools	6.6	0	26	0	3.0	0	17	0	0.0	0	0	0
Churches	18.1	17	36	37	2.4	0	2	0	0.0	0	0	0
Hospitals	0.6	0	2	0	0.0	0	0	0	0.0	0	0	0
Total Incompatible	368.9	4,626	2,331	15,263	74.1	854	479	3,008	0.9	3	2	11

Note: Parcels and dwelling units may not match for single family land uses due to subdivision.
Parcels for multifamily land uses reflect only the common area parcel, except for condominiums.

LOS ANGELES INTERNATIONAL AIRPORT

Incompatible Land Use

Annual Noise Impact Accumulated by Noise Zone: CNEL 65, 70, and 75 +

4Q23	Total Cumulative Noise Impact Areas - Athens											
	<i>CNEL 65 dB and Above</i>				<i>CNEL 70 dB and Above</i>				<i>CNEL 75 dB and Above</i>			
	Land Use	Acres	Dwelling Units	Parcels	Population	Acres	Dwelling Units	Parcels	Population	Acres	Dwelling Units	Parcels
Single Family	16.5	127	140	426	0.0	0	0	0	0.0	0	0	0
Multi-Family	16.0	286	113	903	0.0	0	0	0	0.0	0	0	0
Mobile Home	0.0	0	0	0	0.0	0	0	0	0.0	0	0	0
Schools	0.0	0	0	0	0.0	0	0	0	0.0	0	0	0
Churches	1.3	3	6	6	0.0	0	0	0	0.0	0	0	0
Hospitals	0.0	0	0	0	0.0	0	0	0	0.0	0	0	0
Total Incompatible	33.8	416	259	1,335	0.0	0	0	0	0.0	0	0	0

Note: Parcels and dwelling units may not match for single family land uses due to subdivision.
Parcels for multifamily land uses reflect only the common area parcel, except for condominiums.

Report Date: Feb, 06 2024

LOS ANGELES INTERNATIONAL AIRPORT

Incompatible Land Use

Annual Noise Impact Accumulated by Noise Zone: CNEL 65, 70, and 75 +

4Q23	Total Cumulative Noise Impact Areas - Del Aire											
	<i>CNEL 65 dB and Above</i>				<i>CNEL 70 dB and Above</i>				<i>CNEL 75 dB and Above</i>			
	Land Use	Acres	Dwelling Units	Parcels	Population	Acres	Dwelling Units	Parcels	Population	Acres	Dwelling Units	Parcels
Single Family	0.0	0	0	0	0.0	0	0	0	0.0	0	0	0
Multi-Family	0.0	0	0	0	0.0	0	0	0	0.0	0	0	0
Mobile Home	0.0	0	0	0	0.0	0	0	0	0.0	0	0	0
Schools	0.0	0	0	0	0.0	0	0	0	0.0	0	0	0
Churches	0.0	0	0	0	0.0	0	0	0	0.0	0	0	0
Hospitals	0.0	0	0	0	0.0	0	0	0	0.0	0	0	0
Total Incompatible	0.0	0	0	0	0.0	0	0	0	0.0	0	0	0

Note: Parcels and dwelling units may not match for single family land uses due to subdivision.
 Parcels for multifamily land uses reflect only the common area parcel, except for condominiums.

Report Date: Feb, 06 2024

LOS ANGELES INTERNATIONAL AIRPORT

Incompatible Land Use

Annual Noise Impact Accumulated by Noise Zone: CNEL 65, 70, and 75 +

4Q23	Total Cumulative Noise Impact Areas - City of El Segundo											
	<i>CNEL 65 dB and Above</i>				<i>CNEL 70 dB and Above</i>				<i>CNEL 75 dB and Above</i>			
	Land Use	Acres	Dwelling Units	Parcels	Population	Acres	Dwelling Units	Parcels	Population	Acres	Dwelling Units	Parcels
Single Family	44.0	287	288	754	1.6	10	10	20	0.0	0	0	0
Multi-Family	12.7	374	143	796	4.2	165	70	339	0.0	0	0	0
Mobile Home	0.0	0	0	0	0.0	0	0	0	0.0	0	0	0
Schools	0.0	0	0	0	0.0	0	0	0	0.0	0	0	0
Churches	0.7	0	2	0	0.0	0	0	0	0.0	0	0	0
Hospitals	0.0	0	0	0	0.0	0	0	0	0.0	0	0	0
Total Incompatible	57.4	661	433	1,549	5.8	175	80	359	0.0	0	0	0

Note: Parcels and dwelling units may not match for single family land uses due to subdivision.
Parcels for multifamily land uses reflect only the common area parcel, except for condominiums.

Report Date: Feb, 06 2024

LOS ANGELES INTERNATIONAL AIRPORT

Incompatible Land Use

Annual Noise Impact Accumulated by Noise Zone: CNEL 65, 70, and 75 +

4Q23	Total Cumulative Noise Impact Areas - City of Inglewood											
	<i>CNEL 65 dB and Above</i>				<i>CNEL 70 dB and Above</i>				<i>CNEL 75 dB and Above</i>			
	Land Use	Acres	Dwelling Units	Parcels	Population	Acres	Dwelling Units	Parcels	Population	Acres	Dwelling Units	Parcels
Single Family	63.5	439	449	1,550	1.2	9	9	36	0.0	0	0	0
Multi-Family	88.5	1,977	486	6,591	2.6	82	13	363	0.0	0	0	0
Mobile Home	0.6	0	2	0	0.0	0	0	0	0.0	0	0	0
Schools	1.4	0	1	0	0.0	0	0	0	0.0	0	0	0
Churches	10.9	11	18	22	2.1	0	1	0	0.0	0	0	0
Hospitals	0.6	0	2	0	0.0	0	0	0	0.0	0	0	0
Total Incompatible	165.5	2,427	958	8,163	5.9	91	23	399	0.0	0	0	0

Note: Parcels and dwelling units may not match for single family land uses due to subdivision.
Parcels for multifamily land uses reflect only the common area parcel, except for condominiums.

Report Date: Feb, 06 2024

LOS ANGELES INTERNATIONAL AIRPORT

Incompatible Land Use

Annual Noise Impact Accumulated by Noise Zone: CNEL 65, 70, and 75 +

4Q23	Total Cumulative Noise Impact Areas - Lennox											
	<i>CNEL 65 dB and Above</i>				<i>CNEL 70 dB and Above</i>				<i>CNEL 75 dB and Above</i>			
	Land Use	Acres	Dwelling Units	Parcels	Population	Acres	Dwelling Units	Parcels	Population	Acres	Dwelling Units	Parcels
Single Family	52.2	360	365	1,387	30.5	202	205	775	0.5	1	1	4
Multi-Family	49.4	758	280	2,817	28.6	386	153	1,475	0.4	2	1	8
Mobile Home	0.0	0	0	0	0.0	0	0	0	0.0	0	0	0
Schools	5.2	0	25	0	3.0	0	17	0	0.0	0	0	0
Churches	1.6	1	3	4	0.3	0	1	0	0.0	0	0	0
Hospitals	0.0	0	0	0	0.0	0	0	0	0.0	0	0	0
Total Incompatible	108.4	1,119	673	4,208	62.4	588	376	2,250	0.9	3	2	11

Note: Parcels and dwelling units may not match for single family land uses due to subdivision.
Parcels for multifamily land uses reflect only the common area parcel, except for condominiums.

Report Date: Feb, 06 2024

LOS ANGELES INTERNATIONAL AIRPORT

Incompatible Land Use

Annual Noise Impact Accumulated by Noise Zone: CNEL 65, 70, and 75 +

4Q23	Total Cumulative Noise Impact Areas - South and South East LA											
	<i>CNEL 65 dB and Above</i>				<i>CNEL 70 dB and Above</i>				<i>CNEL 75 dB and Above</i>			
	Land Use	Acres	Dwelling Units	Parcels	Population	Acres	Dwelling Units	Parcels	Population	Acres	Dwelling Units	Parcels
Single Family	0.1	1	1	3	0.0	0	0	0	0.0	0	0	0
Multi-Family	0.0	0	0	0	0.0	0	0	0	0.0	0	0	0
Mobile Home	0.0	0	0	0	0.0	0	0	0	0.0	0	0	0
Schools	0.0	0	0	0	0.0	0	0	0	0.0	0	0	0
Churches	2.4	1	6	4	0.0	0	0	0	0.0	0	0	0
Hospitals	0.0	0	0	0	0.0	0	0	0	0.0	0	0	0
Total Incompatible	2.5	2	7	7	0.0	0	0	0	0.0	0	0	0

Note: Parcels and dwelling units may not match for single family land uses due to subdivision.
 Parcels for multifamily land uses reflect only the common area parcel, except for condominiums.

Report Date: Feb, 06 2024

LOS ANGELES INTERNATIONAL AIRPORT

Incompatible Land Use

Annual Noise Impact Accumulated by Noise Zone: CNEL 65, 70, and 75 +

4Q23	Total Cumulative Noise Impact Areas - Westchester/Playa Del Rey											
	<i>CNEL 65 dB and Above</i>				<i>CNEL 70 dB and Above</i>				<i>CNEL 75 dB and Above</i>			
	Land Use	Acres	Dwelling Units	Parcels	Population	Acres	Dwelling Units	Parcels	Population	Acres	Dwelling Units	Parcels
Single Family	0.0	0	0	0	0.0	0	0	0	0.0	0	0	0
Multi-Family	0.0	0	0	0	0.0	0	0	0	0.0	0	0	0
Mobile Home	0.0	0	0	0	0.0	0	0	0	0.0	0	0	0
Schools	0.0	0	0	0	0.0	0	0	0	0.0	0	0	0
Churches	1.3	1	1	1	0.0	0	0	0	0.0	0	0	0
Hospitals	0.0	0	0	0	0.0	0	0	0	0.0	0	0	0
Total Incompatible	1.3	1	1	1	0.0	0	0	0	0.0	0	0	0

Note: Parcels and dwelling units may not match for single family land uses due to subdivision.
 Parcels for multifamily land uses reflect only the common area parcel, except for condominiums.

Report Date: Feb, 06 2024



October	PDR1	PDR2	ESG1	ESG2	ESG3	ESG5	DEL1*	WCH2	WCH3	WCH5	WCH6	ING1	ING2	ING3	ING6	ING8	LNX1	LNX2	LNX3	LNX4	ATH2	SLA1	SLA3	SLA5	SLA7
1 Sun	67	61	62	67	60	58	50	59	61	64	57	62	61	67	69	61	75	61	62	65	67	64	62	65	65
2 Mon	66	61	64	67	61	57	57	59	58	64	58	61	61	66	68	60	74	67	65	63	66	66	61	63	63
3 Tue	66	59	63	67	63	61	52	61	59	64	56	60	60	65	69	59	73	63	61	64	66	63	60	63	63
4 Wed	64	58	66	68	62	61	58	62	60	64	57	60	60	65	67	59	73	61	61	63	65	64	60	63	63
5 Thu	66		64	67	64	62	57	63	64	64	57	60	61	66	69	60	74	61	62	64	65	67	61	63	64
6 Fri	67	62	64	68	65	64	55	63	67	63	58	61	62	66	69	61	76	63	63	65	67	63	61	65	64
7 Sat	65	60	63	67	60	58	48	59	58	65	54	61	59	66	67	60	74	62	61	63	67	62	60	63	62
8 Sun	65	58	61	65	59	58	47	57	58	65	55	61	60	66	69	62	75	62	62	65	67	63	62	65	65
9 Mon	67	61	63	66	59	52	45	60	61	67	58	62	61	67	69	60	75	63	63	65	67	64	62	65	65
10 Tue	66	60	63	69	60	51	50	57	58	63	60	61	61	66	71	62	76	63	63	66	69	62	63	66	66
11 Wed	66	60	64	68	61	62	52	59	61	64	56	62	60	66	71	61	76	64	63	66	67	68	63	66	66
12 Thu	67	61	63	68	62	60	54	61	61	64	56	61	60	66	70	62	76	62	65	66	68	64	63	66	66
13 Fri	65	59	65	69	63	61	42	61	62	63	57	62	64	67	69	61	74	61	64	64	66	64	61	64	63
14 Sat	66	60	64	68	60	58	50	60	65	63	57	61	60	66	68	60	74	61	62	64	65	65	61	63	64
15 Sun	66	59	64	67	62	60	55	61	61	64	56	63	61	66	68	61	74	60	62	63	65	63	60	63	63
16 Mon	67	62	63	67	61	54	49	64	65	63	57	61	60	66	68	61	74	65	61	64	66	63	61	64	64
17 Tue	66	59	63	67	60	54	49	59	56	64	56	61	60	66	70	61	74	64	62	64	66	64	61	64	64
18 Wed	66	59	62	66	59	57	42	57	56	63	55	59	59	65	69	60	76	62	63	65	67	62	62	64	65
19 Thu	66	60	64	66	61	58	51	57	58	64	56	62	60	66	70	62	76	63	64	66	67	63	63	65	65
20 Fri	68	62	64	67	64	59	54	60	63	64	58	63	62	67	70	62	76	63	64	66	67	65	63	65	65
21 Sat	66	59	64	67	61	63	44	61	61	63	55	60	59	65	67	59	73	60	61	63	65	61	60	63	66
22 Sun	67	60	63	67	60	57	42	59	59	64	57	62	61	67	68	61	74	60	62	64	66	67	61	64	64
23 Mon	66	61	64	68	60	56	47	59	60	64	57	62	61	66	68	60	74	62	63	66	66	63	61	63	63
24 Tue	67	61	63	67	60	56	48	60	62	64	57	62	61	67	70	61	76	62	62	66	67	64	63	66	65
25 Wed	66	60	64	68	61	56	43	59	58	68	55	62	60	66	68	59	74	60	61	64	66	63	61	64	64
26 Thu	66	61	65	69	62	59	51	58	62	64	57	62	61	67	69	60	74	61	62	65	67	66	62	64	64
27 Fri	67	61	63	66	61	58	49	59	62	66	57	63	62	68	70	62	76	63	63	67	68	65	63	66	66
28 Sat	66	59	64	68	61	56	59	62	61	64	56	63	60	65	68	60	75	61	63	64	67	63	61	64	64
29 Sun	64	56	62	66	60		50	59	62	62	55	59	58	64	66	60	72	59	59	61	63	60	58	62	61
30 Mon	62	57	61	64	62	57	59	61	61	60	56	58	57	63	66	57	72	58	61	63	64	59	59	61	61
31 Tue	62	55	59	64	61	50	57	57	58	61	56	58	57	67	66	60	72	61	61	62	64	59	58	62	61



November	PDR1	PDR2	ESG1	ESG2	ESG3	ESG5	DEL1*	WCH2	WCH3	WCH5	WCH6	ING1	ING2	ING3	ING6	ING8	LNX1	LNX2	LNX3	LNX4	ATH2	SLA1	SLA3	SLA5	SLA7
1 Wed	63	58	61	65	62		56	56	61	64	54	59	58	64	66	58	73	60	61	62	63	61	59	61	61
2 Thu	65	59	62	66	62	60	59	59	62	63	58	61	59	66	68	60	74	63	62	64	65	61	60	63	63
3 Fri	66	59	63	66	63	63	57	61	62	63	56	59	59	64	69	60	75	64	64	65	66	61	61	64	65
4 Sat	67	61	62	66	61	53	54	59	63	63		61	59	65	70	61	76	62	64	66	67	62	62	66	65
5 Sun	67	61	64	67	62		53	60	63	--		64	67	66	71	62	76	62	63	66	68	62	63	66	66
6 Mon	67	62	63	67	60	54	51	59	60	67	58	61	60	66	70	61	76	62	61	66	67	62	63	65	65
7 Tue	65	59	64	67	62	61	61	56	56	67	56	60	60	66	70	61	76	63	63	66	67	68	63	66	66
8 Wed	65	58	63	67	62	61	53	58	61	61	56	59	58	64	70	60	75	62	65	65	66	61	62	65	65
9 Thu	64	57	62	66	63	63	58	56	58	67	52	59	58	64	66	58	72	60	62	62	63	60	59	62	62
10 Fri	64	57	62	66	62	62	51	59	62	64	55	60	59	65	67	60	74	60	62	63	64	61	60	63	63
11 Sat	65	58	62	66	64	66	61	59	60	62	55	59	58	64	67	61	74	60	63	64	64	62	60	63	62
12 Sun	64	58	61	66	62	65	58	62	63	64	60	60	59	66	69	58	74	60	61	64	66	60	60	63	63
13 Mon	67	62	64	68	62	62	54	62	62	63	56	61	60	68	67	59	73	63	61	63	64	61	60	63	62
14 Tue	66	59	63	67	63	64	57	61	62	62	57	59	59	64	67	60	73	61	61	63	64	60	60	63	62
15 Wed	66	61	61	65	61	62	61	61	63	70	68	66	66	66	71	65	74	72	69	70	66	67	66	65	63
16 Thu	67	61	64	67	61	60	59	59	60	67	64	64	63	66	70	64	75	68	67	68	67	64	65	65	65
17 Fri	67	61	66	68	63	62	54	60	58	65	56	61	61	67	69	61	75	62	63	66	68	63	62	65	65
18 Sat	66	59	64	68	60	56	44	59	56	64	56	60	60	66	68	59	74	60	60	63	65	62	61	63	63
19 Sun	67	61	64	68	62	63	59	56	58	65	57	62	61	67	70	61	75	61	61	66	67		62	66	65
20 Mon	65	60	64	67	63	63	62	62	62	63	56	60	59	64	69	58	73	61	66	63	65	60	60	63	62
21 Tue	64	57	63	67	63	64	60	54	56	59	55	58	58	64	67	58	72	58	57	63	64	60	59	63	62
22 Wed	64	58	63	67	65	66	60	58	59	65	55	60	60	65	67	59	73	60	68	63	65	62	60	63	62
23 Thu	64	58	62	66	59	57	45	59	57	62	52	58	57	63	66	58	72	58	61	61	63	61	59	62	62
24 Fri	67	60	63	67	61	59	49	58	59	66	56	61	60	66	70	60	73	61	60	63	66	63	61	64	64
25 Sat	66	61	64	68	62	61	56	61	57	63	55	61	60	66	68	59	74	60	61	63	66	62	60	64	63
26 Sun	66	60	63	67	62	62	55	58	56	61	55	59	59	65	67	59	72	58	63	62	64	62	60	63	62
27 Mon	65	61	63	67	62	63	57	59	58	63	56	60	59	65	67	58	73	62	60	63	65	61	59	63	62
28 Tue	65	59	63	67	62	62	52	61	60	63	57	60	60	66	68	59	73	61	60	64	64	62	60	63	63
29 Wed	66	60	65	68	63	61	50	63	59	64	56	61	60	66	69	60	74	60	61	64	66	63	61	64	64
30 Thu	67	61	65	68	64	62	58	58	58	65	56	62	61	66	71	64	77	63	64	68	68	64	64	67	66



December	PDR1	PDR2	ESG1	ESG2	ESG3	ESG5	DEL1*	WCH2	WCH3	WCH5	WCH6	ING1	ING2	ING3	ING6	ING8	LNX1	LNX2	LNX3	LNX4	ATH2	SLA1	SLA3	SLA5	SLA7
1 Fri	66	59	65	68	64	63	61	55	57	65	56	62	61	67	69	62	74	63	61	64	66		61	64	64
2 Sat	67	60	63	68	62	61	52	60	61	63	56	60	60	65	67	60	73	60	60	63	65	62	60	63	63
3 Sun	66	60	64	68	63	62	52	61	59	65	57	61	60	66	68	60	74	60	60	64	65	62	61	64	63
4 Mon	66	61	65	68	63	63	55	63	64	66	61	61	61	65	68	60	73	63	61	64	65	61	61	64	65
5 Tue	65	59	64	67	64	66	62	59	60	64	59	62	61	65	68	62	74	67	64	66	65	61	62	64	63
6 Wed	67	61	64	68	64	63	58	60	62	64	58	61	61	67	70	61	76	62	65	66	67	63	63	66	65
7 Thu	66	60	65	68	63	61	59	60	61	65	55	61	61	66	71	64	75	62	62	66	67	65	63	66	66
8 Fri	66	61	64	68	65	65	62	55	57	65	57	62	61	67	70	62	76	63	63	66	68	63	63	66	66
9 Sat	65	59	61	65	62	65	59	54	53	61	53	59	58	64	67	59	74	60	59	63	65	60	60	64	63
10 Sun	64	56	60	64	62	65	58	53	57	62	53	58	57	63	66	57	73	59	58	62	62	59	58	65	61
11 Mon	65	60	62	66	61	61	53	62	63	64	57	60	60	65	70	58	72	60	61	63	63	60	59	63	61
12 Tue	67	61	64	67	62	60	53	61	63	64	57	61	61	67	70	62	76	62	62	67	67	63	63	66	66
13 Wed	68	61	64	67	61	57	46	64	64	64	56	61	60	66	68	60	74	60	62	64	65	62	62	64	64
14 Thu	66	60	64	68	65	66	60	61	59	63	55	60	59	65	67	59	74	63	61	64	66	61	62	64	64
15 Fri	65	59	64	69	65	66	61	56	58	61	54	60	58	65	67	59	72	59	59	63	64	61	61	63	62
16 Sat	63	58	63	68	66	67	64	57	58	62	54	59	58	64	68	60	74	60	63	64	66	63	65	64	64
17 Sun	65	58	63	67	63	65	61	59	61	63	56	60	59	65	66	61	72	59	61	63	64	61	60	62	62
18 Mon	68	63	64	67	63	61	54	60	61	67	58	62	60	67	69	61	76	62	63	66	67	64	62	65	65
19 Tue	67	62	64	68	62	60	53	60	58	64	58	61	60	66	70	62	76	62	62	67	68	67	63	67	66
20 Wed	64	59	60	66	57	53	60	63	63	71	69	66	67	64	71	66	77	72	70	70	67		67	66	64
21 Thu	67	62	61	65	61	60	63	63	64	74	72	68	69	67	71	67	75	73	72	72	65		69	64	61
22 Fri	67	62	63	67	62	62	62	63	64	71	69	68	67	68	71	67	76	72	70	70	67		72	66	64
23 Sat	67	61	64	68	62	60	49	62	63	64	57	61	61	67	69	61	74	62	62	64	66	63	--	64	65
24 Sun	65	59	64	68	62	60	47	59	59	62	55	60	60	65	67	59	73	59	61	66	67	61		63	65
25 Mon	66	60	63	67	62	62	52	59	62	64	55	60	60	65	67	59	73	59	62	64	65	62	--	65	66
26 Tue	67	62	63	67	65	61	51	60	62	65	58	61	60	66	68	60	74	62	61	64	66	62	63	64	64
27 Wed	67	61	64	68	62	63	49	63	65	66	59	63	62	67	68	60	74	61	62	64	66	63	62	64	65
28 Thu	68	61	64	68	62	61	52	64	63	65	58	62	61	67	68	61	74	61	62	64	67	63	62	65	64
29 Fri	67	61	64	68	62	60	54	63	63	65	58	62	61	66	69	60	74	62	63	65	68	63	62	65	64
30 Sat	67	60	64	68	61	59	60	62	62	66	58	62	61	67	70	62	75	62	63	66	67		65	65	66
31 Sun	66	61	63	67	62	60	44	61	58	63	55	61	60	66	69	60	76	62	63	63	66	64	61	64	68



Runway Utilization Report
Summary of Runway Use (Average)
 Los Angeles International Airport

Period : 10/01/2023 to 12/31/2023

Airline : ALL

Aircraft : ALL

Time Period	Percent Daily Operations Per Runway								Average Operations	Runway Complex		Runway Flow		In Board	Out Board	
	06L	06R	07L	07R	24L	24R	25L	25R		South	North	West	East			
Departures																
Total Hours																
24 Hours	<1%	2%	2%	<1%	31%	0%	4%	61%	787	68%	32%	96%	4%	96%	4%	
CNEL Hours																
0700 - 1900	<1%	2%	2%	<1%	34%	0%	4%	58%	518	64%	36%	96%	4%	96%	4%	
1900 - 2200	0%	2%	2%	<1%	36%	0%	4%	57%	104	63%	37%	96%	4%	96%	4%	
2200 - 0700	0%	1%	3%	<1%	17%	0%	4%	75%	166	82%	18%	96%	4%	96%	4%	
Contra Hours																
Midnight - 0630	0%	<1%	3%	<1%	10%	0%	6%	80%	87	89%	11%	96%	4%	94%	6%	
0630 - Midnight	<1%	2%	2%	<1%	33%	0%	4%	59%	700	65%	35%	96%	4%	96%	4%	
Arrivals																
Total Hours																
24 Hours	0%	5%	<1%	2%	38%	0%	54%	<1%	787	57%	43%	92%	8%	44%	56%	
CNEL Hours																
0700 - 1900	0%	2%	<1%	2%	40%	0%	55%	<1%	511	58%	42%	96%	4%	43%	57%	
1900 - 2200	0%	1%	<1%	2%	41%	0%	56%	<1%	142	58%	42%	97%	3%	42%	58%	
2200 - 0700	0%	23%	<1%	2%	24%	0%	49%	1%	134	53%	47%	74%	26%	49%	51%	
Contra Hours																
Midnight - 0630	0%	57%	2%	3%	6%	0%	30%	3%	51	37%	63%	39%	61%	67%	33%	
0630 - Midnight	0%	2%	<1%	2%	40%	0%	56%	<1%	736	59%	41%	96%	4%	42%	58%	

All values are rounded to the nearest whole number.



Runway Utilization Report
 Summary of Runway Flow (Average)
 Los Angeles International Airport

Period: 10/01/2023 to 12/31/2023

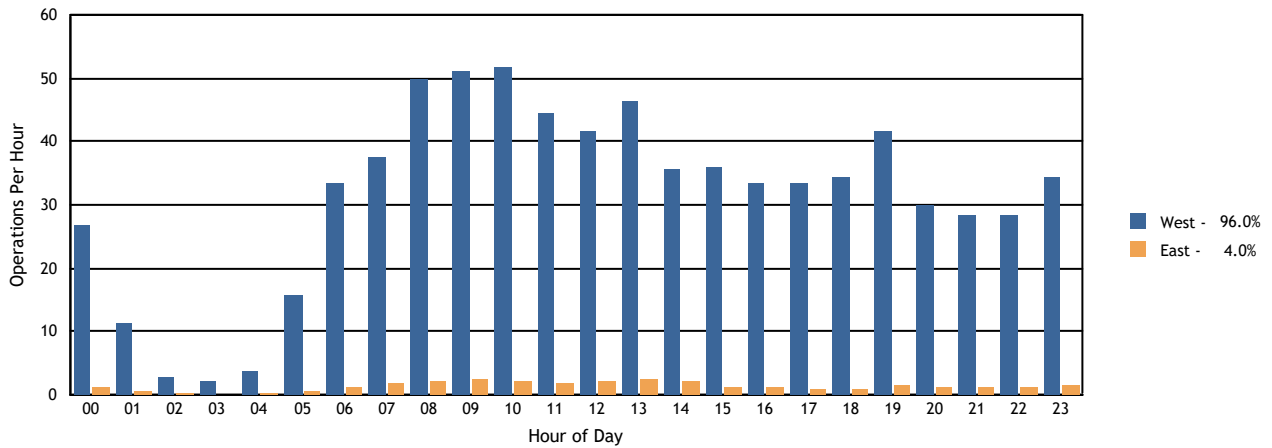
Airline : ALL

Aircraft : ALL

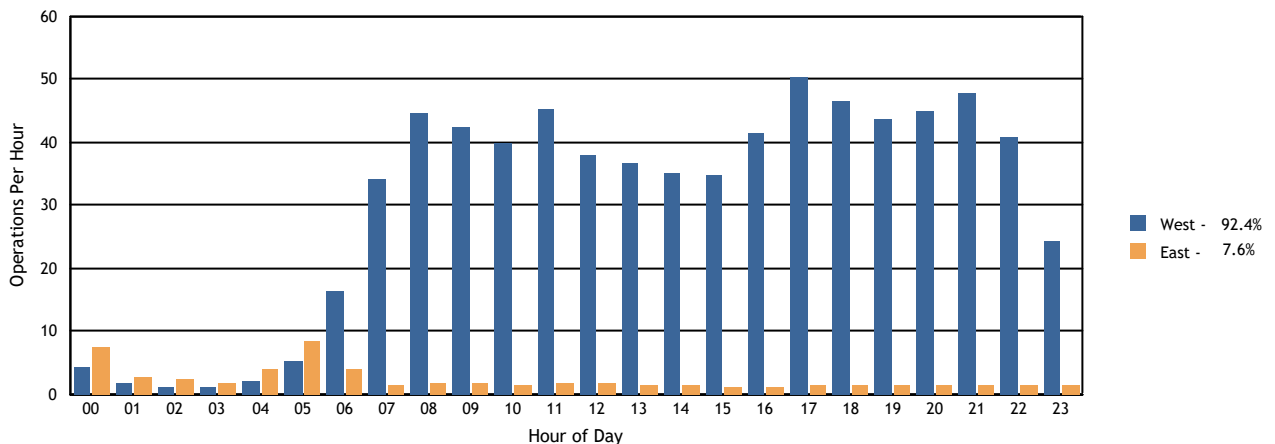
Time Period	Departures			Arrivals			Departures		Arrivals	
	West	East	Average	West	East	Average	West	East	West	East
Total Hours										
24 Hours	755	32	787	727	60	787	96%	4%	92%	8%
CNEL Hours										
0700-1900	496	21	518	491	21	511	96%	4%	96%	4%
1900-2200	100	4	104	137	5	142	96%	4%	97%	3%
2200-0700	159	7	166	99	35	134	96%	4%	74%	26%
Contra Hours										
Midnight - 0630	83	4	87	20	31	51	96%	4%	39%	61%
0630 - Midnight	672	28	700	707	29	736	96%	4%	96%	4%

All percentages are rounded to the nearest whole number.

Departures Per Hour by Operational Direction



Arrivals Per Hour by Operational Direction



LAX Average Daily Runway Use By Aircraft Type - 24 Hours Fourth Quarter 2023

Arrivals (Average Daily Operations)								
Aircraft Type	06L	06R	07L	07R	24L	24R	25L	25R
A20N	0.00	0.79	0.00	0.78	2.21	0.00	17.67	0.10
A21N	0.00	4.63	0.05	1.38	12.51	0.00	31.18	0.36
A306	0.00	0.41	0.03	0.07	0.00	0.00	0.62	0.07
A319	0.00	0.49	0.00	0.60	11.90	0.00	11.28	0.10
A320	0.00	1.39	0.03	1.04	11.57	0.00	30.03	0.26
A321	0.00	3.34	0.07	2.37	13.87	0.00	52.91	0.36
A332	0.00	0.77	0.00	0.18	3.20	0.00	3.70	0.02
A333	0.00	0.03	0.00	0.04	0.67	0.00	0.70	0.00
A343	0.00	0.00	0.00	0.00	0.18	0.00	0.09	0.00
A359	0.00	1.23	0.00	0.17	5.93	0.00	4.74	0.07
A35K	0.00	0.10	0.00	0.03	1.68	0.00	1.03	0.00
A388	0.00	0.58	0.00	0.02	5.28	0.00	0.15	0.00
ASTR	0.00	0.00	0.00	0.00	0.00	0.00	0.03	0.00
B350	0.00	0.07	0.00	0.03	1.20	0.00	0.71	0.00
B38M	0.00	1.42	0.01	0.78	21.51	0.00	17.88	0.14
B39M	0.00	0.87	0.00	0.70	6.83	0.00	18.23	0.18
B734	0.00	0.01	0.00	0.00	0.01	0.00	0.08	0.00
B737	0.00	1.43	0.01	0.41	25.00	0.00	12.16	0.11
B738	0.00	2.40	0.00	1.77	32.73	0.00	41.38	0.52
B739	0.00	1.26	0.02	1.18	20.29	0.00	29.51	0.35
B744	0.00	1.34	0.05	0.26	0.12	0.00	7.77	0.05
B748	0.00	0.91	0.00	0.11	1.32	0.00	2.93	0.00
B752	0.00	0.88	0.03	0.51	4.65	0.00	11.46	0.09
B753	0.00	0.13	0.00	0.17	2.09	0.00	5.18	0.08
B762	0.00	0.00	0.00	0.01	0.00	0.00	0.26	0.00
B763	0.00	4.70	0.28	1.01	5.84	0.00	16.60	0.50
B764	0.00	0.10	0.00	0.03	0.49	0.00	0.70	0.00
B772	0.00	0.85	0.02	0.22	2.28	0.00	6.57	0.09
B77L	0.00	2.18	0.08	0.40	0.21	0.00	10.18	0.15
B77W	0.00	1.23	0.01	0.28	13.71	0.00	6.22	0.05
B788	0.00	0.86	0.00	0.21	4.27	0.00	4.05	0.02
B789	0.00	1.58	0.02	0.39	8.43	0.00	8.22	0.09
B78X	0.00	0.11	0.00	0.12	2.57	0.00	2.30	0.01
BCS1	0.00	0.00	0.00	0.00	0.04	0.00	0.05	0.00
BCS3	0.00	0.01	0.00	0.05	0.66	0.00	1.75	0.00
BE20	0.00	0.01	0.00	0.00	0.07	0.00	0.08	0.00
BE30	0.00	0.00	0.00	0.00	0.00	0.00	0.02	0.00
BE40	0.00	0.00	0.00	0.01	0.08	0.00	0.20	0.00
BE58	0.00	0.01	0.00	0.00	0.01	0.00	0.01	0.00
BE99	0.00	0.02	0.00	0.00	0.51	0.00	0.13	0.00

Departures (Average Daily Operations)								
Aircraft Type	06L	06R	07L	07R	24L	24R	25L	25R
A20N	0.00	0.29	0.70	0.00	1.38	0.00	0.23	18.97
A21N	0.00	0.46	1.48	0.00	12.41	0.00	0.27	35.57
A306	0.00	0.00	0.09	0.00	0.00	0.00	0.23	0.88
A319	0.00	0.42	0.64	0.00	13.09	0.00	0.05	10.20
A320	0.00	0.42	1.18	0.00	7.49	0.00	0.33	34.95
A321	0.00	1.43	1.83	0.00	8.67	0.00	0.42	60.60
A332	0.01	0.01	0.25	0.00	4.02	0.00	0.27	3.30
A333	0.00	0.04	0.03	0.00	0.32	0.00	0.00	1.05
A343	0.00	0.00	0.00	0.00	0.04	0.00	0.00	0.23
A359	0.00	0.11	0.36	0.00	3.79	0.00	0.08	7.84
A35K	0.00	0.01	0.04	0.00	0.57	0.00	0.01	2.22
A388	0.00	0.15	0.00	0.09	5.54	0.00	0.26	0.00
ASTR	0.00	0.00	0.00	0.00	0.00	0.00	0.02	0.01
B350	0.00	0.04	0.03	0.00	0.48	0.00	0.35	1.11
B38M	0.00	0.66	0.92	0.00	23.01	0.00	0.15	17.05
B39M	0.00	0.26	0.72	0.00	3.77	0.00	0.42	21.67
B734	0.00	0.00	0.00	0.00	0.00	0.00	0.02	0.08
B737	0.00	0.72	0.64	0.00	27.85	0.00	0.30	9.66
B738	0.00	1.59	1.62	0.00	33.71	0.00	0.54	41.47
B739	0.00	0.86	1.05	0.00	15.24	0.00	0.15	35.35
B744	0.00	0.01	0.34	0.03	0.07	0.00	2.39	6.71
B748	0.00	0.11	0.00	0.09	1.11	0.00	3.68	0.28
B752	0.00	0.37	0.40	0.00	5.12	0.00	0.23	11.59
B753	0.00	0.15	0.11	0.00	1.62	0.00	0.02	5.77
B762	0.00	0.00	0.02	0.00	0.00	0.00	0.07	0.18
B763	0.00	0.35	0.93	0.01	8.58	0.00	3.92	15.16
B764	0.00	0.02	0.03	0.00	0.60	0.00	0.01	0.65
B772	0.00	0.17	0.26	0.00	0.67	0.00	0.25	8.65
B77L	0.00	0.05	0.48	0.00	0.01	0.00	4.63	8.00
B77W	0.00	0.15	0.64	0.00	5.12	0.00	0.11	15.62
B788	0.00	0.11	0.32	0.00	2.64	0.00	0.03	6.35
B789	0.00	0.18	0.54	0.01	3.87	0.00	0.07	14.05
B78X	0.00	0.12	0.11	0.00	1.17	0.00	0.01	3.73
BCS1	0.00	0.00	0.00	0.00	0.02	0.00	0.00	0.08
BCS3	0.00	0.03	0.04	0.00	0.54	0.00	0.00	1.85
BE20	0.00	0.00	0.00	0.00	0.03	0.00	0.01	0.11
BE30	0.00	0.00	0.00	0.00	0.01	0.00	0.00	0.01
BE40	0.00	0.00	0.01	0.00	0.00	0.00	0.08	0.20
BE58	0.00	0.00	0.00	0.00	0.01	0.00	0.00	0.02
BE99	0.00	0.01	0.00	0.00	0.07	0.00	0.05	0.53

LAX Noise Management

Source: LAX ANOMS, based on available FAA radar flight track data.

note: Aircraft Type for certain military operations may not be available through our data source, therefore will not be included in the report.

LAX Average Daily Runway Use By Aircraft Type - 24 Hours Fourth Quarter 2023

Arrivals (Average Daily Operations)								
Aircraft Type	06L	06R	07L	07R	24L	24R	25L	25R
C172	0.00	0.00	0.00	0.00	0.01	0.00	0.02	0.01
C182	0.00	0.01	0.00	0.01	0.04	0.00	0.18	0.00
C208	0.00	0.00	0.00	0.07	0.02	0.00	1.73	0.17
C25A	0.00	0.02	0.00	0.00	0.12	0.00	0.03	0.00
C25B	0.00	0.04	0.00	0.03	0.10	0.00	0.46	0.01
C25C	0.00	0.01	0.00	0.01	0.00	0.00	0.07	0.00
C500	0.00	0.00	0.00	0.00	0.00	0.00	0.01	0.00
C510	0.00	0.00	0.00	0.00	0.00	0.00	0.01	0.00
C525	0.00	0.00	0.00	0.00	0.07	0.00	0.12	0.00
C550	0.00	0.00	0.00	0.00	0.01	0.00	0.04	0.00
C55B	0.00	0.00	0.00	0.00	0.01	0.00	0.02	0.00
C560	0.00	0.01	0.00	0.00	0.10	0.00	0.07	0.00
C56X	0.00	0.01	0.00	0.04	0.29	0.00	0.83	0.00
C650	0.00	0.00	0.00	0.01	0.01	0.00	0.04	0.00
C680	0.00	0.02	0.00	0.00	0.11	0.00	0.51	0.00
C68A	0.00	0.05	0.02	0.11	0.57	0.00	1.54	0.02
C700	0.00	0.03	0.00	0.03	0.22	0.00	0.60	0.00
C750	0.00	0.01	0.00	0.04	0.13	0.00	0.60	0.00
CL30	0.00	0.03	0.00	0.09	0.72	0.00	1.48	0.01
CL35	0.00	0.08	0.00	0.14	0.71	0.00	1.53	0.02
CL60	0.00	0.05	0.01	0.07	0.34	0.00	1.38	0.00
CRJ2	0.00	0.02	0.00	0.02	0.21	0.00	1.07	0.00
CRJ7	0.00	0.16	0.01	0.25	4.28	0.00	2.80	0.01
E120	0.00	0.00	0.00	0.00	0.00	0.00	0.01	0.00
E135	0.00	0.02	0.00	0.00	0.21	0.00	0.96	0.00
E145	0.00	0.00	0.00	0.02	0.14	0.00	0.97	0.02
E170	0.00	0.46	0.00	0.58	14.66	0.00	13.12	0.14
E190	0.00	0.01	0.00	0.04	0.03	0.00	0.42	0.00
E35L	0.00	0.00	0.00	0.01	0.03	0.00	0.11	0.00
E50P	0.00	0.00	0.00	0.00	0.00	0.00	0.03	0.00
E545	0.00	0.02	0.00	0.01	0.18	0.00	0.52	0.00
E550	0.00	0.00	0.00	0.07	0.10	0.00	0.46	0.01
E55P	0.00	0.01	0.00	0.10	0.57	0.00	1.39	0.00
E75L	0.00	1.86	0.00	0.88	43.30	0.00	18.01	0.22
E75S	0.00	0.03	0.00	0.00	0.11	0.00	0.03	0.01
F2TH	0.00	0.00	0.00	0.04	0.17	0.00	0.59	0.00
F900	0.00	0.00	0.00	0.03	0.12	0.00	0.39	0.00
FA50	0.00	0.00	0.00	0.00	0.00	0.00	0.09	0.00
FA7X	0.00	0.05	0.02	0.02	0.20	0.00	0.37	0.01
FA8X	0.00	0.00	0.00	0.00	0.01	0.00	0.07	0.00

Departures (Average Daily Operations)								
Aircraft Type	06L	06R	07L	07R	24L	24R	25L	25R
C17	0.00	0.01	0.00	0.00	0.02	0.00	0.00	0.00
C172	0.00	0.00	0.00	0.00	0.01	0.00	0.00	0.03
C182	0.00	0.02	0.00	0.00	0.00	0.00	0.01	0.24
C208	0.00	0.00	0.07	0.00	0.00	0.00	0.01	1.91
C25A	0.00	0.02	0.00	0.00	0.02	0.00	0.01	0.12
C25B	0.00	0.01	0.04	0.00	0.05	0.00	0.10	0.43
C25C	0.00	0.01	0.02	0.00	0.00	0.00	0.01	0.05
C500	0.00	0.00	0.00	0.00	0.00	0.00	0.00	0.01
C510	0.00	0.00	0.00	0.00	0.00	0.00	0.00	0.01
C525	0.00	0.00	0.00	0.00	0.01	0.00	0.00	0.18
C550	0.00	0.00	0.00	0.00	0.00	0.00	0.00	0.05
C55B	0.00	0.00	0.00	0.00	0.01	0.00	0.00	0.02
C560	0.00	0.00	0.00	0.00	0.00	0.00	0.04	0.12
C56X	0.00	0.03	0.03	0.00	0.03	0.00	0.42	0.65
C650	0.00	0.00	0.01	0.00	0.00	0.00	0.03	0.02
C680	0.00	0.02	0.00	0.00	0.01	0.00	0.23	0.34
C68A	0.00	0.09	0.03	0.01	0.15	0.00	0.64	1.40
C700	0.00	0.02	0.01	0.01	0.02	0.00	0.23	0.60
C750	0.00	0.03	0.01	0.00	0.05	0.00	0.18	0.50
CL30	0.00	0.05	0.01	0.00	0.14	0.00	0.85	1.25
CL35	0.00	0.09	0.09	0.00	0.09	0.00	0.68	1.48
CL60	0.00	0.09	0.04	0.00	0.09	0.00	0.61	1.00
CRJ2	0.00	0.00	0.03	0.00	0.02	0.00	0.10	1.15
CRJ7	0.00	0.32	0.10	0.00	2.50	0.00	0.01	4.61
E120	0.00	0.00	0.00	0.00	0.00	0.00	0.01	0.00
E135	0.00	0.00	0.01	0.00	0.00	0.00	0.26	0.91
E145	0.00	0.01	0.02	0.00	0.00	0.00	0.35	0.76
E170	0.00	0.42	0.64	0.00	6.10	0.00	0.02	21.79
E190	0.00	0.02	0.02	0.00	0.01	0.00	0.09	0.37
E35L	0.00	0.00	0.01	0.00	0.00	0.00	0.01	0.13
E50P	0.00	0.00	0.00	0.00	0.00	0.00	0.01	0.02
E545	0.00	0.01	0.00	0.00	0.02	0.00	0.24	0.48
E550	0.00	0.02	0.04	0.00	0.01	0.00	0.23	0.32
E55P	0.00	0.05	0.07	0.01	0.16	0.00	0.58	1.20
E75L	0.00	1.58	1.03	0.00	36.52	0.00	0.08	25.13
E75S	0.00	0.03	0.00	0.00	0.15	0.00	0.00	0.00
F2TH	0.00	0.01	0.02	0.00	0.07	0.00	0.28	0.41
F900	0.00	0.00	0.01	0.00	0.02	0.00	0.23	0.28
FA50	0.00	0.00	0.00	0.00	0.00	0.00	0.01	0.08
FA7X	0.00	0.01	0.01	0.00	0.01	0.00	0.18	0.47

LAX Noise Management

Source: LAX ANOMS, based on available FAA radar flight track data.

note: Aircraft Type for certain military operations may not be available through our data source, therefore will not be included in the report.

LAX Average Daily Runway Use By Aircraft Type - 24 Hours Fourth Quarter 2023

Arrivals (Average Daily Operations)								
Aircraft Type	06L	06R	07L	07R	24L	24R	25L	25R
G150	0.00	0.00	0.00	0.00	0.01	0.00	0.04	0.00
G280	0.00	0.00	0.00	0.00	0.05	0.00	0.37	0.00
GA5C	0.00	0.00	0.00	0.01	0.04	0.00	0.08	0.00
GA6C	0.00	0.02	0.00	0.02	0.04	0.00	0.35	0.00
GALX	0.00	0.01	0.00	0.00	0.03	0.00	0.15	0.00
GL5T	0.00	0.03	0.00	0.00	0.04	0.00	0.29	0.00
GL7T	0.00	0.02	0.00	0.03	0.17	0.00	0.47	0.00
GLAS	0.00	0.00	0.00	0.00	0.00	0.00	0.01	0.00
GLEX	0.00	0.10	0.00	0.08	0.45	0.00	1.58	0.01
GLF4	0.00	0.07	0.01	0.08	0.41	0.00	1.57	0.01
GLF5	0.00	0.09	0.00	0.04	0.30	0.00	1.57	0.00
GLF6	0.00	0.00	0.00	0.10	0.43	0.00	1.60	0.00
H25B	0.00	0.05	0.01	0.05	0.15	0.00	1.02	0.00
H25C	0.00	0.00	0.00	0.00	0.00	0.00	0.01	0.00
HA4T	0.00	0.00	0.00	0.00	0.00	0.00	0.02	0.00
HDJT	0.00	0.00	0.00	0.00	0.03	0.00	0.14	0.00
J328	0.00	0.00	0.00	0.01	0.00	0.00	0.00	0.00
LJ31	0.00	0.00	0.00	0.00	0.00	0.00	0.01	0.00
LJ35	0.00	0.00	0.01	0.00	0.00	0.00	0.12	0.00
LJ45	0.00	0.00	0.00	0.01	0.10	0.00	0.28	0.00
LJ60	0.00	0.00	0.00	0.00	0.07	0.00	0.16	0.00
LJ75	0.00	0.00	0.00	0.00	0.02	0.00	0.07	0.00
MD11	0.00	0.75	0.05	0.10	0.01	0.00	1.99	0.09
PA46	0.00	0.00	0.00	0.00	0.02	0.00	0.01	0.00
PC12	0.00	0.04	0.00	0.00	0.14	0.00	0.23	0.03
PC24	0.00	0.00	0.00	0.00	0.03	0.00	0.03	0.00
PRM1	0.00	0.01	0.00	0.00	0.08	0.00	0.12	0.00
S22T	0.00	0.00	0.00	0.00	0.01	0.00	0.01	0.00
SR20	0.00	0.01	0.00	0.00	0.00	0.00	0.00	0.00
SR22	0.00	0.00	0.00	0.00	0.00	0.00	0.01	0.00
A346	0.00	0.00	0.00	0.00	0.00	0.00	0.01	0.00
GLF3	0.00	0.00	0.00	0.00	0.00	0.00	0.05	0.00
SF50	0.00	0.00	0.00	0.00	0.00	0.00	0.04	0.00
C501	0.00	0.00	0.00	0.00	0.00	0.00	0.01	0.00
TBM7	0.00	0.00	0.00	0.01	0.02	0.00	0.00	0.00
MD83	0.00	0.00	0.00	0.00	0.00	0.00	0.01	0.00
C425	0.00	0.01	0.00	0.00	0.00	0.00	0.00	0.00
BE35	0.00	0.00	0.00	0.00	0.02	0.00	0.00	0.00
A339	0.00	0.07	0.00	0.05	2.03	0.00	1.37	0.00

Departures (Average Daily Operations)								
Aircraft Type	06L	06R	07L	07R	24L	24R	25L	25R
FA8X	0.00	0.01	0.00	0.00	0.00	0.00	0.01	0.02
G150	0.00	0.00	0.00	0.00	0.00	0.00	0.02	0.03
G280	0.00	0.00	0.00	0.00	0.01	0.00	0.14	0.26
GA5C	0.00	0.00	0.02	0.00	0.00	0.00	0.04	0.05
GA6C	0.00	0.03	0.00	0.00	0.00	0.00	0.08	0.26
GALX	0.00	0.00	0.00	0.00	0.01	0.00	0.02	0.16
GL5T	0.00	0.00	0.00	0.00	0.01	0.00	0.08	0.29
GL7T	0.00	0.03	0.04	0.00	0.03	0.00	0.16	0.43
GLAS	0.00	0.00	0.00	0.00	0.00	0.00	0.00	0.01
GLEX	0.00	0.04	0.03	0.00	0.15	0.00	0.61	1.39
GLF4	0.00	0.01	0.04	0.00	0.09	0.00	0.76	1.16
GLF5	0.00	0.03	0.02	0.00	0.12	0.00	0.51	1.22
GLF6	0.00	0.07	0.04	0.01	0.14	0.00	0.47	1.28
H25B	0.00	0.03	0.02	0.00	0.07	0.00	0.33	0.83
H25C	0.00	0.00	0.00	0.00	0.00	0.00	0.00	0.02
HA4T	0.00	0.00	0.00	0.00	0.00	0.00	0.00	0.02
HDJT	0.00	0.00	0.00	0.00	0.01	0.00	0.02	0.14
J328	0.00	0.01	0.00	0.00	0.00	0.00	0.00	0.00
LJ31	0.00	0.00	0.00	0.00	0.00	0.00	0.00	0.01
LJ35	0.00	0.00	0.00	0.00	0.00	0.00	0.05	0.08
LJ45	0.00	0.02	0.00	0.00	0.01	0.00	0.09	0.28
LJ60	0.00	0.00	0.00	0.00	0.02	0.00	0.09	0.12
LJ75	0.00	0.00	0.01	0.00	0.00	0.00	0.02	0.04
MD11	0.00	0.05	0.11	0.00	0.00	0.00	1.17	1.72
PA46	0.00	0.00	0.00	0.00	0.00	0.00	0.00	0.03
PC12	0.00	0.03	0.00	0.00	0.11	0.00	0.03	0.26
PC24	0.00	0.00	0.00	0.00	0.00	0.00	0.03	0.03
PRM1	0.00	0.00	0.00	0.00	0.01	0.00	0.03	0.15
S22T	0.00	0.00	0.00	0.00	0.01	0.00	0.00	0.01
SR20	0.00	0.00	0.00	0.00	0.00	0.00	0.00	0.01
A346	0.00	0.00	0.00	0.00	0.01	0.00	0.00	0.00
GLF3	0.00	0.00	0.00	0.00	0.02	0.00	0.00	0.03
SF50	0.00	0.00	0.00	0.00	0.00	0.00	0.00	0.04
C501	0.00	0.00	0.00	0.00	0.00	0.00	0.00	0.01
TBM7	0.00	0.00	0.01	0.00	0.01	0.00	0.00	0.01
MD83	0.00	0.00	0.00	0.00	0.00	0.00	0.00	0.01
C425	0.00	0.00	0.00	0.00	0.00	0.00	0.00	0.01
BE35	0.00	0.00	0.00	0.00	0.00	0.00	0.00	0.02
A339	0.00	0.02	0.09	0.00	1.36	0.00	0.23	1.84

LAX Noise Management

Source: LAX ANOMS, based on available FAA radar flight track data.

note: Aircraft Type for certain military operations may not be available through our data source, therefore will not be included in the report.

LAX Average Daily Runway Use By Aircraft Type - 24 Hours Fourth Quarter 2023

Arrivals (Average Daily Operations)								
Aircraft Type	06L	06R	07L	07R	24L	24R	25L	25R
EPIC	0.00	0.01	0.00	0.00	0.00	0.00	0.07	0.00
SF34	0.00	0.00	0.00	0.00	0.02	0.00	0.02	0.00
DA62	0.00	0.00	0.00	0.00	0.00	0.00	0.03	0.00
PA32	0.00	0.00	0.00	0.00	0.01	0.00	0.02	0.00

Departures (Average Daily Operations)								
Aircraft Type	06L	06R	07L	07R	24L	24R	25L	25R
EPIC	0.00	0.00	0.00	0.00	0.00	0.00	0.03	0.04
SF34	0.00	0.00	0.00	0.00	0.00	0.00	0.00	0.04

LAX Average Daily Runway Use By Aircraft Type - Night Time (10pm - 7am)
Fourth Quarter 2023

Arrivals (Average Daily Operations)								
Aircraft Type	06L	06R	07L	07R	24L	24R	25L	25R
A20N	0.00	0.74	0.00	0.14	0.43	0.00	4.91	0.05
A21N	0.00	4.35	0.04	0.34	3.15	0.00	6.42	0.12
A306	0.00	0.41	0.03	0.04	0.00	0.00	0.37	0.07
A319	0.00	0.10	0.00	0.05	0.96	0.00	1.18	0.00
A320	0.00	1.04	0.02	0.22	1.15	0.00	5.67	0.08
A321	0.00	2.86	0.05	0.41	2.97	0.00	9.45	0.09
A332	0.00	0.75	0.00	0.07	1.01	0.00	0.77	0.01
A359	0.00	0.99	0.00	0.01	0.18	0.00	0.52	0.02
A35K	0.00	0.07	0.00	0.00	0.10	0.00	0.08	0.00
A388	0.00	0.38	0.00	0.00	0.32	0.00	0.10	0.00
B350	0.00	0.01	0.00	0.00	0.10	0.00	0.02	0.00
B38M	0.00	0.88	0.00	0.09	2.47	0.00	2.38	0.02
B39M	0.00	0.66	0.00	0.21	1.05	0.00	4.35	0.00
B737	0.00	0.75	0.00	0.08	4.76	0.00	1.25	0.01
B738	0.00	1.24	0.00	0.23	4.28	0.00	4.03	0.02
B739	0.00	0.68	0.00	0.12	1.61	0.00	2.80	0.00
B744	0.00	1.25	0.05	0.10	0.03	0.00	1.68	0.05
B748	0.00	0.84	0.00	0.08	0.09	0.00	1.08	0.00
B752	0.00	0.74	0.03	0.09	0.78	0.00	1.32	0.02
B753	0.00	0.08	0.00	0.01	0.24	0.00	0.67	0.00
B762	0.00	0.00	0.00	0.00	0.00	0.00	0.03	0.00
B763	0.00	4.55	0.28	0.35	0.93	0.00	5.24	0.45
B764	0.00	0.09	0.00	0.00	0.08	0.00	0.02	0.00
B772	0.00	0.76	0.02	0.07	0.26	0.00	1.05	0.07
B77L	0.00	2.11	0.08	0.14	0.07	0.00	2.77	0.15
B77W	0.00	0.72	0.01	0.03	0.54	0.00	0.48	0.03
B788	0.00	0.72	0.00	0.03	0.30	0.00	0.63	0.02
B789	0.00	1.26	0.01	0.11	0.34	0.00	1.50	0.05
BCS1	0.00	0.00	0.00	0.00	0.02	0.00	0.00	0.00
BCS3	0.00	0.00	0.00	0.00	0.14	0.00	0.10	0.00
BE20	0.00	0.01	0.00	0.00	0.00	0.00	0.00	0.00
BE30	0.00	0.00	0.00	0.00	0.00	0.00	0.01	0.00
BE40	0.00	0.00	0.00	0.00	0.00	0.00	0.01	0.00
BE99	0.00	0.02	0.00	0.00	0.51	0.00	0.13	0.00
C172	0.00	0.00	0.00	0.00	0.01	0.00	0.00	0.00
C182	0.00	0.01	0.00	0.00	0.03	0.00	0.13	0.00
C208	0.00	0.00	0.00	0.00	0.00	0.00	0.07	0.00
C25B	0.00	0.01	0.00	0.00	0.00	0.00	0.01	0.00
C560	0.00	0.01	0.00	0.00	0.00	0.00	0.00	0.00
C56X	0.00	0.00	0.00	0.00	0.02	0.00	0.07	0.00

Departures (Average Daily Operations)								
Aircraft Type	06L	06R	07L	07R	24L	24R	25L	25R
A20N	0.00	0.05	0.28	0.00	0.64	0.00	0.17	7.25
A21N	0.00	0.09	0.34	0.00	1.99	0.00	0.23	10.99
A306	0.00	0.00	0.04	0.00	0.00	0.00	0.02	0.68
A319	0.00	0.01	0.10	0.00	0.72	0.00	0.02	1.63
A320	0.00	0.13	0.32	0.00	0.86	0.00	0.25	9.29
A321	0.00	0.43	0.52	0.00	2.54	0.00	0.38	17.70
A332	0.00	0.00	0.04	0.00	0.14	0.00	0.03	1.04
A333	0.00	0.00	0.02	0.00	0.01	0.00	0.00	0.02
A343	0.00	0.00	0.00	0.00	0.01	0.00	0.00	0.00
A359	0.00	0.02	0.22	0.00	1.91	0.00	0.08	4.26
A388	0.00	0.04	0.00	0.03	1.27	0.00	0.21	0.00
B350	0.00	0.01	0.00	0.00	0.11	0.00	0.00	0.43
B38M	0.00	0.11	0.25	0.00	1.64	0.00	0.14	4.57
B39M	0.00	0.04	0.22	0.00	0.64	0.00	0.40	6.18
B737	0.00	0.11	0.14	0.00	3.50	0.00	0.23	3.59
B738	0.00	0.17	0.28	0.00	3.53	0.00	0.27	6.63
B739	0.00	0.05	0.16	0.00	1.70	0.00	0.14	4.29
B744	0.00	0.01	0.13	0.01	0.01	0.00	0.33	3.68
B748	0.00	0.03	0.00	0.05	0.20	0.00	2.00	0.28
B752	0.00	0.04	0.17	0.00	1.36	0.00	0.02	2.90
B753	0.00	0.02	0.04	0.00	0.04	0.00	0.01	1.66
B762	0.00	0.00	0.00	0.00	0.00	0.00	0.01	0.00
B763	0.00	0.12	0.29	0.00	1.63	0.00	0.93	9.33
B764	0.00	0.01	0.00	0.00	0.16	0.00	0.01	0.11
B772	0.00	0.05	0.10	0.00	0.05	0.00	0.03	2.87
B77L	0.00	0.01	0.15	0.00	0.00	0.00	0.30	4.09
B77W	0.00	0.01	0.24	0.00	0.18	0.00	0.10	6.70
B788	0.00	0.04	0.05	0.00	0.07	0.00	0.03	1.27
B789	0.00	0.03	0.24	0.00	0.72	0.00	0.05	4.41
B78X	0.00	0.00	0.02	0.00	0.00	0.00	0.00	0.03
BCS3	0.00	0.00	0.00	0.00	0.00	0.00	0.00	0.01
BE20	0.00	0.00	0.00	0.00	0.00	0.00	0.00	0.01
BE99	0.00	0.01	0.00	0.00	0.05	0.00	0.05	0.53
C172	0.00	0.00	0.00	0.00	0.01	0.00	0.00	0.01
C208	0.00	0.00	0.01	0.00	0.00	0.00	0.00	0.10
C25B	0.00	0.00	0.00	0.00	0.00	0.00	0.00	0.01
C560	0.00	0.00	0.00	0.00	0.00	0.00	0.00	0.01
C56X	0.00	0.00	0.00	0.00	0.00	0.00	0.00	0.05
C680	0.00	0.00	0.00	0.00	0.00	0.00	0.01	0.01
C68A	0.00	0.00	0.01	0.00	0.01	0.00	0.00	0.12

LAX Noise Management

Source: LAX ANOMS, based on available FAA radar flight track data.

note: Aircraft Type for certain military operations may not be available through our data source, therefore will not be included in the report.

LAX Average Daily Runway Use By Aircraft Type - Night Time (10pm - 7am) Fourth Quarter 2023

Arrivals (Average Daily Operations)								
Aircraft Type	06L	06R	07L	07R	24L	24R	25L	25R
C680	0.00	0.00	0.00	0.00	0.00	0.00	0.01	0.00
C68A	0.00	0.03	0.02	0.00	0.00	0.00	0.05	0.00
C700	0.00	0.02	0.00	0.00	0.00	0.00	0.01	0.00
C750	0.00	0.01	0.00	0.00	0.01	0.00	0.01	0.00
CL30	0.00	0.01	0.00	0.00	0.02	0.00	0.03	0.00
CL35	0.00	0.04	0.00	0.00	0.04	0.00	0.09	0.00
CL60	0.00	0.01	0.01	0.00	0.01	0.00	0.05	0.00
CRJ2	0.00	0.01	0.00	0.00	0.00	0.00	0.03	0.00
CRJ7	0.00	0.02	0.00	0.01	0.96	0.00	0.37	0.00
E135	0.00	0.01	0.00	0.00	0.00	0.00	0.00	0.00
E145	0.00	0.00	0.00	0.00	0.01	0.00	0.03	0.00
E170	0.00	0.02	0.00	0.02	0.08	0.00	0.09	0.00
E190	0.00	0.00	0.00	0.02	0.00	0.00	0.20	0.00
E35L	0.00	0.00	0.00	0.00	0.00	0.00	0.01	0.00
E545	0.00	0.02	0.00	0.00	0.01	0.00	0.03	0.00
E550	0.00	0.00	0.00	0.00	0.00	0.00	0.02	0.00
E55P	0.00	0.00	0.00	0.00	0.04	0.00	0.07	0.00
E75L	0.00	0.18	0.00	0.11	1.70	0.00	1.34	0.00
E75S	0.00	0.00	0.00	0.00	0.02	0.00	0.00	0.00
F2TH	0.00	0.00	0.00	0.01	0.00	0.00	0.00	0.00
F900	0.00	0.00	0.00	0.00	0.01	0.00	0.04	0.00
FA7X	0.00	0.05	0.02	0.01	0.02	0.00	0.07	0.00
FA8X	0.00	0.00	0.00	0.00	0.00	0.00	0.01	0.00
G150	0.00	0.00	0.00	0.00	0.00	0.00	0.01	0.00
GALX	0.00	0.01	0.00	0.00	0.00	0.00	0.03	0.00
GL5T	0.00	0.03	0.00	0.00	0.00	0.00	0.01	0.00
GL7T	0.00	0.00	0.00	0.00	0.01	0.00	0.04	0.00
GLEX	0.00	0.07	0.00	0.00	0.02	0.00	0.12	0.00
GLF4	0.00	0.03	0.01	0.00	0.03	0.00	0.13	0.00
GLF5	0.00	0.07	0.00	0.00	0.04	0.00	0.15	0.00
GLF6	0.00	0.00	0.00	0.01	0.00	0.00	0.09	0.00
H25B	0.00	0.04	0.01	0.02	0.02	0.00	0.12	0.00
LJ35	0.00	0.00	0.01	0.00	0.00	0.00	0.01	0.00
MD11	0.00	0.75	0.05	0.07	0.00	0.00	0.65	0.09
PC12	0.00	0.01	0.00	0.00	0.00	0.00	0.02	0.00
B734	0.00	0.01	0.00	0.00	0.00	0.00	0.02	0.00
FA50	0.00	0.00	0.00	0.00	0.00	0.00	0.03	0.00
A339	0.00	0.00	0.00	0.01	0.00	0.00	0.00	0.00
EPIC	0.00	0.01	0.00	0.00	0.00	0.00	0.00	0.00
SR20	0.00	0.01	0.00	0.00	0.00	0.00	0.00	0.00
C425	0.00	0.01	0.00	0.00	0.00	0.00	0.00	0.00

Departures (Average Daily Operations)								
Aircraft Type	06L	06R	07L	07R	24L	24R	25L	25R
C700	0.00	0.00	0.00	0.00	0.00	0.00	0.01	0.05
C750	0.00	0.00	0.00	0.00	0.00	0.00	0.00	0.07
CL30	0.00	0.00	0.00	0.00	0.00	0.00	0.02	0.10
CL35	0.00	0.00	0.00	0.00	0.00	0.00	0.00	0.17
CL60	0.00	0.01	0.00	0.00	0.00	0.00	0.00	0.09
CRJ2	0.00	0.00	0.00	0.00	0.00	0.00	0.00	0.04
CRJ7	0.00	0.01	0.03	0.00	0.18	0.00	0.00	0.76
E135	0.00	0.00	0.00	0.00	0.00	0.00	0.00	0.03
E145	0.00	0.00	0.00	0.00	0.00	0.00	0.00	0.04
E170	0.00	0.00	0.01	0.00	0.01	0.00	0.00	0.17
E190	0.00	0.01	0.02	0.00	0.01	0.00	0.00	0.17
E35L	0.00	0.00	0.00	0.00	0.00	0.00	0.00	0.02
E545	0.00	0.00	0.00	0.00	0.00	0.00	0.00	0.03
E550	0.00	0.00	0.00	0.00	0.00	0.00	0.00	0.02
E55P	0.00	0.00	0.00	0.00	0.00	0.00	0.00	0.10
E75L	0.00	0.10	0.15	0.00	2.09	0.00	0.01	3.28
E75S	0.00	0.00	0.00	0.00	0.01	0.00	0.00	0.00
F2TH	0.00	0.01	0.01	0.00	0.00	0.00	0.00	0.01
F900	0.00	0.00	0.01	0.00	0.00	0.00	0.00	0.03
FA7X	0.00	0.00	0.00	0.00	0.00	0.00	0.00	0.07
G280	0.00	0.00	0.00	0.00	0.00	0.00	0.00	0.03
GA5C	0.00	0.00	0.01	0.00	0.00	0.00	0.00	0.00
GA6C	0.00	0.00	0.00	0.00	0.00	0.00	0.01	0.02
GALX	0.00	0.00	0.00	0.00	0.00	0.00	0.00	0.02
GL5T	0.00	0.00	0.00	0.00	0.00	0.00	0.00	0.04
GL7T	0.00	0.01	0.01	0.00	0.00	0.00	0.01	0.04
GLEX	0.00	0.01	0.01	0.00	0.00	0.00	0.03	0.26
GLF4	0.00	0.00	0.00	0.00	0.00	0.00	0.01	0.16
GLF5	0.00	0.00	0.00	0.00	0.00	0.00	0.00	0.20
GLF6	0.00	0.00	0.00	0.00	0.00	0.00	0.00	0.17
H25B	0.00	0.00	0.01	0.00	0.00	0.00	0.00	0.15
LJ45	0.00	0.00	0.00	0.00	0.00	0.00	0.00	0.02
LJ60	0.00	0.00	0.00	0.00	0.00	0.00	0.00	0.01
MD11	0.00	0.01	0.02	0.00	0.00	0.00	0.03	0.62
PC12	0.00	0.00	0.00	0.00	0.01	0.00	0.00	0.02
B734	0.00	0.00	0.00	0.00	0.00	0.00	0.00	0.04
FA50	0.00	0.00	0.00	0.00	0.00	0.00	0.00	0.01
C650	0.00	0.00	0.00	0.00	0.00	0.00	0.00	0.01
HDJT	0.00	0.00	0.00	0.00	0.00	0.00	0.00	0.01
PC24	0.00	0.00	0.00	0.00	0.00	0.00	0.00	0.01
A339	0.00	0.02	0.00	0.00	0.20	0.00	0.00	0.24

LAX Noise Management

Source: LAX ANOMS, based on available FAA radar flight track data.

note: Aircraft Type for certain military operations may not be available through our data source, therefore will not be included in the report.

**LAX Average Daily Runway Use By Aircraft Type - Night Time (10pm - 7am)
Fourth Quarter 2023**

Arrivals (Average Daily Operations)								
Aircraft Type	06L	06R	07L	07R	24L	24R	25L	25R
BE58	0.00	0.01	0.00	0.00	0.01	0.00	0.01	0.00
BE23	0.00	0.00	0.00	0.00	0.00	0.00	0.01	0.00
SF34	0.00	0.00	0.00	0.00	0.02	0.00	0.00	0.00

Departures (Average Daily Operations)								
Aircraft Type	06L	06R	07L	07R	24L	24R	25L	25R
HA4T	0.00	0.00	0.00	0.00	0.00	0.00	0.00	0.01
BE35	0.00	0.00	0.00	0.00	0.00	0.00	0.00	0.01
C5M	0.00	0.00	0.00	0.00	0.01	0.00	0.00	0.00
SW4	0.00	0.00	0.00	0.00	0.00	0.00	0.00	0.01
DA62	0.00	0.00	0.00	0.00	0.00	0.00	0.00	0.01
SR20	0.00	0.00	0.00	0.00	0.00	0.00	0.00	0.01
BE58	0.00	0.00	0.00	0.00	0.01	0.00	0.00	0.02
BE23	0.00	0.00	0.00	0.00	0.00	0.00	0.01	0.00

LAX Average Daily Runway Use By Aircraft Group - 24 Hours Fourth Quarter 2023

Arrivals (Average Daily Operations)								
Aircraft Group	06L	06R	07L	07R	24L	24R	25L	25R
Small Jet	0.00	3.42	0.10	3.05	70.34	0.00	60.70	0.51
Small Narrow-Body Jet	0.00	10.10	0.08	7.37	132.78	0.00	180.47	1.76
Large Narrow-Body Jet	0.00	8.98	0.15	4.43	33.12	0.00	100.74	0.88
Small Wide-Body Jet	0.00	5.21	0.32	1.12	6.33	0.00	18.17	0.57
Large Wide-Body Jet	0.00	12.58	0.24	2.60	51.90	0.00	62.02	0.64
Non-Jet	0.00	0.20	0.00	0.12	2.12	0.00	3.33	0.23
Military*	0.00	0.00	0.00	0.00	0.00	0.00	0.00	0.00

Departures (Average Daily Operations)								
Aircraft Group	06L	06R	07L	07R	24L	24R	25L	25R
Small Jet	0.00	3.23	2.55	0.04	46.98	0.00	10.30	74.59
Small Narrow-Body Jet	0.00	5.28	7.54	0.00	126.11	0.00	2.30	191.70
Large Narrow-Body Jet	0.00	2.41	3.82	0.00	27.83	0.00	0.95	113.52
Small Wide-Body Jet	0.00	0.37	1.08	0.01	9.17	0.00	4.23	16.88
Large Wide-Body Jet	0.01	1.32	3.57	0.22	30.32	0.00	13.20	81.59
Non-Jet	0.00	0.11	0.11	0.00	0.76	0.00	0.55	4.47
Military*	0.00	0.01	0.00	0.00	0.04	0.00	0.00	0.00

LAX Noise Management

Source: LAX ANOMS, based on available FAA radar flight track data.

* Aircraft Type for certain military operations may not be available through our data source, therefore will not be included in the report.

**LAX Average Daily Runway Use By Aircraft Group - Night Time (10pm - 7am)
Fourth Quarter 2023**

Arrivals (Average Daily Operations)								
Aircraft Group	06L	06R	07L	07R	24L	24R	25L	25R
Small Jet	0.00	0.73	0.09	0.20	3.09	0.00	3.21	0.00
Small Narrow-Body Jet	0.00	6.11	0.02	1.15	16.88	0.00	26.90	0.18
Large Narrow-Body Jet	0.00	8.02	0.13	0.85	7.14	0.00	17.86	0.23
Small Wide-Body Jet	0.00	5.05	0.32	0.39	1.01	0.00	5.66	0.51
Large Wide-Body Jet	0.00	10.59	0.23	0.71	3.24	0.00	11.32	0.50
Non-Jet	0.00	0.11	0.00	0.00	0.68	0.00	0.40	0.00
Military*	0.00	0.00	0.00	0.00	0.00	0.00	0.00	0.00

Departures (Average Daily Operations)								
Aircraft Group	06L	06R	07L	07R	24L	24R	25L	25R
Small Jet	0.00	0.15	0.27	0.00	2.30	0.00	0.12	6.50
Small Narrow-Body Jet	0.00	0.70	1.77	0.00	13.24	0.00	1.63	43.66
Large Narrow-Body Jet	0.00	0.59	1.08	0.00	5.93	0.00	0.64	33.25
Small Wide-Body Jet	0.00	0.13	0.34	0.00	1.79	0.00	0.98	10.12
Large Wide-Body Jet	0.00	0.29	1.24	0.10	4.77	0.00	3.20	29.52
Non-Jet	0.00	0.02	0.01	0.00	0.20	0.00	0.07	1.17
Military*	0.00	0.00	0.00	0.00	0.00	0.00	0.00	0.00

Summary of Actions Taken by LAWA to Comply with Conditions to the Current Noise Variance for Los Angeles International Airport

Fourth Quarter 2023

The Los Angeles World Airports (LAWA) continuously works to operate an airport that maintains the highest possible environmental quality of life for surrounding communities. To that end, LAWA continues to take the following actions:

- LAWA continues to implement its Aircraft Noise Mitigation Program (ANMP), designed to fund the mitigation of all incompatible land uses within the noise impact boundary as defined in the State Noise Standards. LAWA updates the ANMP report periodically to ensure that it reasonably represents the mitigation and funding programs that are in place.
- With each second quarter Quarterly Report, LAWA submits an annual update of the ANMP. This update includes the number of dwellings acoustically insulated, the cost of the program, the anticipated funding availability, and the anticipated completion date of the project.
- LAWA continues to monitor and enforce, as appropriate, all of its informal noise abatement procedures in place at LAX, including but not limited to the early turn program, preferential runway use procedures and over ocean operations procedures, as well as the formal maintenance run-up restrictions.
- LAWA continues to work with the Federal Aviation Administration and pilots to improve compliance with its “no turns before the shoreline” policy.
- LAWA updated the 2014 Report on Implementation of the Preferential Runway Use Policy at LAX to reevaluate conditions related to compliance, implementation, and possible improvements, and submitted it to Caltrans and Los Angeles County on June 29, 2023.
- LAWA continues to provide the information to the County of Los Angeles needed to prepare Quarterly Reports of Noise Monitoring. Included with the noise monitoring information forwarded each quarter is this brief report regarding the implementation of each of the conditions to the Variance.

- LAWA completed an upgrade of the Noise and Operations Monitoring System for LAX in 2022. LAWA received Caltrans certification of the upgraded airport noise and operations monitoring system in October 2022 and provided the County of Los Angeles with a copy of all submitted documentation and Caltrans certification at that time. The County continues to review and audit the data LAWA submits in each Quarterly Report.
- LAWA continues to include tabular data and graphical illustrations with each Quarterly Report describing and comparing the level and type of usage for each runway at LAX during the quarter. In addition, LAWA is including tabular data describing the daily average number of arrivals and departures by aircraft type and model on each runway during all hours and during nighttime hours from 10 pm to 7 am. LAWA is also now providing the runway usage data to the FAA for their use in monitoring air traffic runway usage.
- LAWA continues to monitor and enforce its maintenance run-up curfew (2300-0600). When applicable, LAWA will include with each Quarterly Report, information regarding monitoring and enforcement activities undertaken during the quarter. There were no enforcement actions reported during the fourth quarter 2023.
- LAWA continues to provide the LAX Noise Comment Phone Line with an option for callers to have a live answer as available, and continues to retrieve any complaint messages and provide appropriate responses in a timely manner.