

California State Airport Noise Standards Quarterly Report

Second Quarter 2023



LOS ANGELES INTERNATIONAL AIRPORT

Los Angeles World Airports

August 30, 2023

TABLE OF CONTENTS

California State Airport Noise Standards Quarterly Report

1. Division of Aeronautics Form 617
2. Incompatible Land Use Data
3. Daily Aircraft CNEL Data
4. Runway Utilization Report
 - Summary of Runway Use
 - Summary of Runway Flow
5. Average Daily Runway Use by Aircraft Type
 - 24 Hour Average
 - Night-time Average (10pm – 7am)
6. Average Daily Runway Use by Aircraft Group
 - 24 Hour Average
 - Night-time Average (10pm – 7am)
7. Summary of Actions

Attachment

Noise contour map

ANMP Tables 1-3, 5

**SUMMARY OF STATISTICAL INFORMATION
FOR
CALIFORNIA DEPARTMENT OF TRANSPORTATION**

Los Angeles International Airport
Second Quarter 2023

1. Size of Noise Impact Area as defined in the Noise Standards (California Code of Regulations, Title 21, Chapter 2.5, Subchapter 6):

352.4 Acres

2. Estimated number of dwelling units included in the Noise Impact Area as defined in the Noise Standards:

4,430

3. Estimated number of people residing within the Noise Impact Area as defined in the Noise Standards:

14,552

4. Identification of aircraft type having highest takeoff noise level operating at this airport together with estimated number of operations by this aircraft type during the calendar quarter reporting period:

B747: 2,625

5. Total number of aircraft operations during the calendar quarter*:

144,894

6. Number of Air Carrier operations during the calendar quarter: (Not Mandatory)*

135,522

7. Percentage of Air Carrier operations by aircraft certificated under Federal Aviation Regulation (FAR) Part 36, Stage III. (Not Mandatory)

100 %

8. Estimated number of operations by General Aviation aircraft during the calendar quarter: (Not Mandatory)*

3,389

9. Estimated number of operations by Military aircraft during the calendar quarter: (Not Mandatory)*

125

LOS ANGELES INTERNATIONAL AIRPORT

Incompatible Land Use

Annual Noise Impact Accumulated by Noise Zone: CNEL 65, 70, and 75 +

2Q23	Total Cumulative Noise Impact Areas - All Jurisdictions											
	<i>CNEL 65 dB and Above</i>				<i>CNEL 70 dB and Above</i>				<i>CNEL 75 dB and Above</i>			
Land Use	Acres	Dwelling Units	Parcels	Population	Acres	Dwelling Units	Parcels	Population	Acres	Dwelling Units	Parcels	Population
Single Family	169.6	1,163	1,190	3,942	29.8	193	196	712	0.5	1	1	4
Multi-Family	159.4	3,253	979	10,580	31.6	546	225	1,784	0.0	0	0	0
Mobile Home	0.6	0	2	0	0.0	0	0	0	0.0	0	0	0
Schools	5.6	0	22	0	3.0	0	17	0	0.0	0	0	0
Churches	16.6	14	30	30	2.4	0	2	0	0.0	0	0	0
Hospitals	0.6	0	2	0	0.0	0	0	0	0.0	0	0	0
Total Incompatible	352.4	4,430	2,225	14,552	66.8	739	440	2,495	0.5	1	1	4

Note: Parcels and dwelling units may not match for single family land uses due to subdivision.
Parcels for multifamily land uses reflect only the common area parcel, except for condominiums.

LOS ANGELES INTERNATIONAL AIRPORT

Incompatible Land Use

Annual Noise Impact Accumulated by Noise Zone: CNEL 65, 70, and 75 +

2Q23	Total Cumulative Noise Impact Areas - Athens											
	<i>CNEL 65 dB and Above</i>				<i>CNEL 70 dB and Above</i>				<i>CNEL 75 dB and Above</i>			
	Land Use	Acres	Dwelling Units	Parcels	Population	Acres	Dwelling Units	Parcels	Population	Acres	Dwelling Units	Parcels
Single Family	14.3	111	124	378	0.0	0	0	0	0.0	0	0	0
Multi-Family	14.3	255	100	790	0.0	0	0	0	0.0	0	0	0
Mobile Home	0.0	0	0	0	0.0	0	0	0	0.0	0	0	0
Schools	0.0	0	0	0	0.0	0	0	0	0.0	0	0	0
Churches	0.9	2	4	6	0.0	0	0	0	0.0	0	0	0
Hospitals	0.0	0	0	0	0.0	0	0	0	0.0	0	0	0
Total Incompatible	29.5	368	228	1,174	0.0	0	0	0	0.0	0	0	0

Note: Parcels and dwelling units may not match for single family land uses due to subdivision.
Parcels for multifamily land uses reflect only the common area parcel, except for condominiums.

Report Date: Aug, 16 2023

LOS ANGELES INTERNATIONAL AIRPORT

Incompatible Land Use

Annual Noise Impact Accumulated by Noise Zone: CNEL 65, 70, and 75 +

2Q23	Total Cumulative Noise Impact Areas - Del Aire											
	<i>CNEL 65 dB and Above</i>				<i>CNEL 70 dB and Above</i>				<i>CNEL 75 dB and Above</i>			
	Land Use	Acres	Dwelling Units	Parcels	Population	Acres	Dwelling Units	Parcels	Population	Acres	Dwelling Units	Parcels
Single Family	0.0	0	0	0	0.0	0	0	0	0.0	0	0	0
Multi-Family	0.0	0	0	0	0.0	0	0	0	0.0	0	0	0
Mobile Home	0.0	0	0	0	0.0	0	0	0	0.0	0	0	0
Schools	0.0	0	0	0	0.0	0	0	0	0.0	0	0	0
Churches	0.0	0	0	0	0.0	0	0	0	0.0	0	0	0
Hospitals	0.0	0	0	0	0.0	0	0	0	0.0	0	0	0
Total Incompatible	0.0	0	0	0	0.0	0	0	0	0.0	0	0	0

Note: Parcels and dwelling units may not match for single family land uses due to subdivision.
 Parcels for multifamily land uses reflect only the common area parcel, except for condominiums.

Report Date: Aug, 16 2023

LOS ANGELES INTERNATIONAL AIRPORT

Incompatible Land Use

Annual Noise Impact Accumulated by Noise Zone: CNEL 65, 70, and 75 +

2Q23	Total Cumulative Noise Impact Areas - City of El Segundo											
	<i>CNEL 65 dB and Above</i>				<i>CNEL 70 dB and Above</i>				<i>CNEL 75 dB and Above</i>			
	Land Use	Acres	Dwelling Units	Parcels	Population	Acres	Dwelling Units	Parcels	Population	Acres	Dwelling Units	Parcels
Single Family	45.5	296	297	784	2.5	15	15	32	0.0	0	0	0
Multi-Family	12.9	376	144	802	4.9	186	86	382	0.0	0	0	0
Mobile Home	0.0	0	0	0	0.0	0	0	0	0.0	0	0	0
Schools	0.0	0	0	0	0.0	0	0	0	0.0	0	0	0
Churches	0.7	0	2	0	0.0	0	0	0	0.0	0	0	0
Hospitals	0.0	0	0	0	0.0	0	0	0	0.0	0	0	0
Total Incompatible	59.1	672	443	1,586	7.4	201	101	414	0.0	0	0	0

Note: Parcels and dwelling units may not match for single family land uses due to subdivision.
Parcels for multifamily land uses reflect only the common area parcel, except for condominiums.

Report Date: Aug, 16 2023

LOS ANGELES INTERNATIONAL AIRPORT

Incompatible Land Use

Annual Noise Impact Accumulated by Noise Zone: CNEL 65, 70, and 75 +

2Q23	Total Cumulative Noise Impact Areas - City of Inglewood											
	<i>CNEL 65 dB and Above</i>				<i>CNEL 70 dB and Above</i>				<i>CNEL 75 dB and Above</i>			
	Land Use	Acres	Dwelling Units	Parcels	Population	Acres	Dwelling Units	Parcels	Population	Acres	Dwelling Units	Parcels
Single Family	59.3	410	418	1,446	0.5	4	4	16	0.0	0	0	0
Multi-Family	85.6	1,928	462	6,378	0.6	14	4	74	0.0	0	0	0
Mobile Home	0.6	0	2	0	0.0	0	0	0	0.0	0	0	0
Schools	1.4	0	1	0	0.0	0	0	0	0.0	0	0	0
Churches	10.7	10	17	19	2.1	0	1	0	0.0	0	0	0
Hospitals	0.6	0	2	0	0.0	0	0	0	0.0	0	0	0
Total Incompatible	158.2	2,348	902	7,843	3.2	18	9	90	0.0	0	0	0

Note: Parcels and dwelling units may not match for single family land uses due to subdivision.
Parcels for multifamily land uses reflect only the common area parcel, except for condominiums.

Report Date: Aug, 16 2023

LOS ANGELES INTERNATIONAL AIRPORT

Incompatible Land Use

Annual Noise Impact Accumulated by Noise Zone: CNEL 65, 70, and 75 +

2Q23	Total Cumulative Noise Impact Areas - Lennox											
	<i>CNEL 65 dB and Above</i>				<i>CNEL 70 dB and Above</i>				<i>CNEL 75 dB and Above</i>			
	Land Use	Acres	Dwelling Units	Parcels	Population	Acres	Dwelling Units	Parcels	Population	Acres	Dwelling Units	Parcels
Single Family	50.4	346	351	1,335	26.9	174	177	663	0.5	1	1	4
Multi-Family	46.6	694	273	2,610	26.1	346	135	1,328	0.0	0	0	0
Mobile Home	0.0	0	0	0	0.0	0	0	0	0.0	0	0	0
Schools	4.2	0	21	0	3.0	0	17	0	0.0	0	0	0
Churches	1.6	1	3	4	0.3	0	1	0	0.0	0	0	0
Hospitals	0.0	0	0	0	0.0	0	0	0	0.0	0	0	0
Total Incompatible	102.8	1,041	648	3,948	56.3	520	330	1,991	0.5	1	1	4

Note: Parcels and dwelling units may not match for single family land uses due to subdivision.
Parcels for multifamily land uses reflect only the common area parcel, except for condominiums.

Report Date: Aug, 16 2023

LOS ANGELES INTERNATIONAL AIRPORT

Incompatible Land Use

Annual Noise Impact Accumulated by Noise Zone: CNEL 65, 70, and 75 +

2Q23	Total Cumulative Noise Impact Areas - South and South East LA											
	<i>CNEL 65 dB and Above</i>				<i>CNEL 70 dB and Above</i>				<i>CNEL 75 dB and Above</i>			
	Land Use	Acres	Dwelling Units	Parcels	Population	Acres	Dwelling Units	Parcels	Population	Acres	Dwelling Units	Parcels
Single Family	0.0	0	0	0	0.0	0	0	0	0.0	0	0	0
Multi-Family	0.0	0	0	0	0.0	0	0	0	0.0	0	0	0
Mobile Home	0.0	0	0	0	0.0	0	0	0	0.0	0	0	0
Schools	0.0	0	0	0	0.0	0	0	0	0.0	0	0	0
Churches	1.4	0	3	0	0.0	0	0	0	0.0	0	0	0
Hospitals	0.0	0	0	0	0.0	0	0	0	0.0	0	0	0
Total Incompatible	1.4	0	3	0	0.0	0	0	0	0.0	0	0	0

Note: Parcels and dwelling units may not match for single family land uses due to subdivision.
Parcels for multifamily land uses reflect only the common area parcel, except for condominiums.

Report Date: Aug, 16 2023

LOS ANGELES INTERNATIONAL AIRPORT

Incompatible Land Use

Annual Noise Impact Accumulated by Noise Zone: CNEL 65, 70, and 75 +

2Q23	Total Cumulative Noise Impact Areas - Westchester/Playa Del Rey											
	<i>CNEL 65 dB and Above</i>				<i>CNEL 70 dB and Above</i>				<i>CNEL 75 dB and Above</i>			
	Land Use	Acres	Dwelling Units	Parcels	Population	Acres	Dwelling Units	Parcels	Population	Acres	Dwelling Units	Parcels
Single Family	0.0	0	0	0	0.0	0	0	0	0.0	0	0	0
Multi-Family	0.0	0	0	0	0.0	0	0	0	0.0	0	0	0
Mobile Home	0.0	0	0	0	0.0	0	0	0	0.0	0	0	0
Schools	0.0	0	0	0	0.0	0	0	0	0.0	0	0	0
Churches	1.3	1	1	1	0.0	0	0	0	0.0	0	0	0
Hospitals	0.0	0	0	0	0.0	0	0	0	0.0	0	0	0
Total Incompatible	1.3	1	1	1	0.0	0	0	0	0.0	0	0	0

Note: Parcels and dwelling units may not match for single family land uses due to subdivision.
Parcels for multifamily land uses reflect only the common area parcel, except for condominiums.

Report Date: Aug, 16 2023



April	PDR1	PDR2	ESG1	ESG2	ESG3	ESG5	DEL1*	WCH2	WCH3	WCH5	WCH6	ING1	ING2	ING3	ING6	ING8	LNX1	LNX2	LNX3	LNX4	ATH2	SLA1	SLA3	SLA5	SLA7
1 Sat	65	59	64	68	62	60	47	61	59	72	62	59	65	67	68	61	73	60	62	64	65	--	60	63	63
2 Sun	67	61	63	67	61	57	47	60	59	73	62	59	65	66	68	63	73	61	62	64	66	--	61	65	64
3 Mon	68	63	64	67	62	61	53	58	57	72	61	59	64	66	70	60	75	61	61	65	66	64	62	64	65
4 Tue	65	58	64	67	62	60	57	53	54	72	62	59	64	65	67	58	72	60	60	63	64	64	60	62	62
5 Wed	66	61	64	67	63	62	52	60	60	72	62	58	64	66	66	59	72	59	60	63	64	63	62	63	63
6 Thu	67	61	64	67	64	65	58	62	61	72	62	59	64	67	67	59	73	62	61	63	65	63	60	63	63
7 Fri	68	62	64	68	64	60	52	64	60	73	62	59	65	66	68	62	73	61	63	64	65	64	63	63	64
8 Sat	68	61	64	69	62	58	54	62	61	72	63	59	65	66	68	59	71	65	65	64	66	64	62	64	64
9 Sun	65	58	60	64	57	53	43	58	57	73	63	59	65	66	68	60	75	62	61	65	66	64	61	64	64
10 Mon	66	60	59	64	56	54	47	59	57	75	64	60	67	68	67	60	73	64	60	63	65	65	59	63	63
11 Tue	66	57	57	64	56	54	47	57	56	75	65	60	68	67	67	58	74	61	61	64	64	64	59	62	66
12 Wed	68	62	62	67	60	56	48	61	57	73	63	60	67	68	70	62	75	64	62	65	69	65	62	64	64
13 Thu	69	63	63	68	62	57	54	60	59	75	64	63	67	68	70	62	75	63	62	64	67	66	62	65	65
14 Fri	68	63	66	70	63	58	49	60	61	73	63	60	66	67	69	65	75	62	65	65	66	65	62	64	65
15 Sat	67	61	64	68	62	60	40	62	60	72	62	59	66	67	67	60	73	62	65	63	66	64	64	65	65
16 Sun	67	62	63	67	60	56	41	60	61	73	62	60	66	67	68	60	74	61	63	64	65	65	61	64	64
17 Mon	68	62	63	67	61	56	48	60	61	73	63	60	66	66	69	60	74	61	61	64	67	65	62	64	64
18 Tue	67	61	66	68	62	58	47	59	58	72	62	59	65	66	67	60	73	60	61	64	65	64	61	63	64
19 Wed	67	60	64	68	63	62	58	62	59	73	62	60	65	66	70	60	74	62	62	64	65	64	61	64	64
20 Thu	66	60	63	68	64	65	62	62	61	72	62	59	64	67	66	59	73	60	63	63	65	63	60	63	63
21 Fri	66	59	65	68	66	67	63	63	63	72	62	59	65	66	67	61	73	62	65	66	65	64	60	63	63
22 Sat	68	63	63	67	63	63	56	63	62	73	62	61	65	66	68	62	72	67	63	63	66	65	60	63	68
23 Sun	68	62	63	67	60	56	40	60	57	73	62	59	66	67	68	59	74	63	61	65	66	64	61	63	64
24 Mon	69	63	62	67	59	54	42	60	59	74	63	60	66	67	69	62	74	64	61	64	67	65	62	64	64
25 Tue	68	62	65	67	61	56	49	59	58	73	62	60	66	67	68	60	73	61	61	63	66	65	61	63	63
26 Wed	66	59	61	66	59	56	43	58	59	73	62	58	64	65	68	59	75	64	61	64	66	64	61	63	63
27 Thu	66	58	58	64	59	55	52	60	58	74	63	61	65	66	69	58	76	63	62	66	65	64	60	63	64
28 Fri	66	58	61	64	58	55	42	59	58	74	63	60	66	67	69	62	76	63	64	66	66	67	61	64	64
29 Sat	65	56	57	64	57	57	49	57	53	71	60	58	63	65	69	60	75	63	66	65	66	62	60	63	64
30 Sun	67	61	60	65	58	53	40	59	57	73	62	59	66	66	69	60	75	61	66	65	66	64	62	64	63



May	PDR1	PDR2	ESG1	ESG2	ESG3	ESG5	DEL1*	WCH2	WCH3	WCH5	WCH6	ING1	ING2	ING3	ING6	ING8	LNX1	LNX2	LNX3	LNX4	ATH2	SLA1	SLA3	SLA5	SLA7
1 Mon	69	63	64	68	61	57	42	61	61	74	63	60	66	67	69	61	74	63	63	65	66	65	62	65	65
2 Tue	68	62	64	67	61	58	51	59	62	73	64	61	66	67	70	61	75	62	63	66	68	65	63	65	68
3 Wed	67	61	65	69	62	58	47	62	61	72	62	58	65	67	67	59	73	60	60	64	66	64	63	63	64
4 Thu	68	62	65	68	61	56	50	62	60	73	63	60	66	67	69	60	74	61	62	64	67	65	62	64	64
5 Fri	67	61	64	68	62	58	52	59	59	73	62	60	66	67	68	60	74	61	62	64	66	65	61	64	64
6 Sat	67	62	65	69	62	58	48	60	58	72	61	58	64	65	68	59	73	62	63	63	66	65	61	63	63
7 Sun	68	62	63	67	61	56	47	59	59	73	62	60	66	67	69	61	74	61	63	65	66	65	62	64	64
8 Mon	67	62	64	68	63	58	48	61	61	74	63	60	66	67	68	61	72	61	63	64	66	65	63	64	64
9 Tue	68	61	64	68	62	57	52	60	59	72	61	60	65	65	69	61	74	62	61	64	65	63	61	63	63
10 Wed	68	62	64	68	61	58	45	61	59	73	62	60	66	66	68	61	74	63	62	64	66	64	65	64	64
11 Thu	68	63	64	68	62	58	54	62	61	73	62	61	67	66	69	60	75	61	62	65	66	65	65	64	64
12 Fri	67	61	64	68	62	58	47	59	63	73	62	59	65	67	68	62	74	60	62	64	69	64	61	64	64
13 Sat	65	57	63	69	61	57	40	56	53	72	61	59	66	66	67	59	73	61	62	63	65	63	62	62	62
14 Sun	67	60	62	67	60	54	43	60	56	73	62	60	66	66	68	61	74	61	62	64	66	64	61	63	63
15 Mon	67	61	62	69	60	56	44	58	56	73	63	60	66	66	68	61	73	65	61	64	65	64	61	63	63
16 Tue	65	58	60	66	60	56	47	57	58	73	62	59	65	65	69	60	76	63	62	65	66	64	62	64	64
17 Wed	65	58	59	65	58	56	43	57	56	73	62	59	65	66	70	60	76	62	63	67	67	63	63	64	64
18 Thu	68	62	63	67	61	56	48	59	60	74	63	60	66	67	70	61	76	63	66	66	67	65	63	65	65
19 Fri	68	61	63	67	61	55	44	59	58	73	62	59	66	66	68	60	74	61	62	64	66	64	62	63	63
20 Sat	67	60	63	68	60	58	42	58	57	74	63	60	66	67	69	61	75	66	62	66	67	64	62	64	64
21 Sun	65	58	61	67	60	56	49	58	52	74	63	59	66	66	68	63	74	61	64	64	66	63	65	62	62
22 Mon	67	61	60	65	58	56	39	59	58	75	64	61	67	68	68	59	74	62	61	64	65	64	61	62	61
23 Tue	68	61	61	66	59	55	49	59	58	74	62	60	66	67	70	62	74	64	61	64	67	66	61	64	64
24 Wed	67	61	65	68	61	57	43	60	58	73	62	59	65	66	68	60	73	63	61	63	66	64	61	63	64
25 Thu	68	62	--	67	61	57	48	60	60	73	63	62	66	67	69	60	74	60	62	64	66	65	62	65	65
26 Fri	67	61	62	68	62	57	45	59	60	73	63	60	66	72	68	61	74	62	62	64	66	65	61	64	65
27 Sat	68	62	63	68	61	58	46	58	59	73	62	60	65	68	70	62	75	64	63	66	67	64	63	66	66
28 Sun	66	60	64	68	61	56	42	56	56	73	62	59	65	66	70	58	73	62	60	63	66	64	60	65	63
29 Mon	67	62	63	67	61	55	49	58	57	74	63	59	66	67	67	62	73	60	62	63	66	65	62	64	64
30 Tue	67	61	63	67	61	58	47	58	58	73	62	60	66	67	69	61	75	63	63	65	66	65	62	65	65
31 Wed	68	62	64	68	61	58	47	58	56	73	62	60	65	70	70	62	76	62	65	66	67	65	63	67	65



June	PDR1	PDR2	ESG1	ESG2	ESG3	ESG5	DEL1*	WCH2	WCH3	WCH5	WCH6	ING1	ING2	ING3	ING6	ING8	LNX1	LNX2	LNX3	LNX4	ATH2	SLA1	SLA3	SLA5	SLA7
1 Thu	67	62	65	68	62	60	57	59	57	73	62	59	66	66	69	60	74	61	63	64	66	65	62	64	64
2 Fri	68	62	64	68	62	58	42	60	61	74	63	61	67	67	71	62	75	62	64	65	67	66	63	65	65
3 Sat	66	60	65	69	61	57	44	59	58	73	65	60	65	67	68	60	74	61	63	64	66	64	62	64	64
4 Sun	67	61	63	68	61	56	41	58	57	73	62	59	66	66	68	59	74	64	61	64	66	64	61	63	63
5 Mon	69	63	64	67	60	56	45	61	60	74	64	61	67	67	69	62	74	63	62	64	66	65	61	64	64
6 Tue	69	63	63	67	60	57	47	61	60	74	63	60	66	67	70	63	74	64	61	64	67	65	62	65	65
7 Wed	68	62	64	68	61	57	44	59	59	74	63	60	66	67	69	62	74	64	62	65	67	66	63	65	65
8 Thu	68	63	64	68	62	58	55	62	62	73	63	61	67	67	69	61	74	67	64	65	66	65	62	64	65
9 Fri	68	62	64	68	62	58	44	60	58	73	62	60	66	67	69	62	74	65	63	65	69	65	62	64	64
10 Sat	69	63	64	68	61	56	45	58	57	73	64	60	65	66	71	61	75	65	64	65	69	64	63	65	65
11 Sun	67	62	63	68	60	54	44	58	56	74	63	61	66	67	68	60	74	61	61	65	67	65	62	64	65
12 Mon	69	63	63	67	60	56	41	60	60	74	63	66	67	68	70	62	76	64	64	66	69	66	63	66	66
13 Tue	69	63	64	67	61	56	47	59	60	73	63	60	66	66	70	64	76	64	63	67	68	65	63	66	66
14 Wed	69	63	64	68	61	57	44	59	58	73	63	61	66	67	71	63	77	64	63	67	68	65	64	66	66
15 Thu	69	62	63	67	63	56	46	59	59	73	63	60	68	67	69	61	75	63	63	65	67	65	62	65	65
16 Fri	67	61	64	68	61	57	50	58	58	74	64	61	66	67	68	61	74	64	64	65	66	65	61	64	64
17 Sat	66	58	63	68	60	58	46	59	57	72	62	58	65	65	67	59	74	60	62	63	70	63	60	62	63
18 Sun	68	61	62	67	60	54	41	58	56	74	63	60	66	67	68	60	76	61	66	64	69	65	61	66	64
19 Mon	67	62	63	67	61	56	49	59	59	73	62	59	66	67	68	63	74	62	61	64	66	65	61	64	63
20 Tue	69	63	63	67	60	56	50	60	62	74	63	60	67	67	70	63	74	64	62	65	68	65	61	64	66
21 Wed	69	63	63	67	61	56	52	60	64	73	63	61	67	67	70	64	74	67	63	65	68	65	62	65	65
22 Thu	69	63	63	67	62	56	53	60	62	75	64	62	67	68	70	64	75	66	63	65	68	66	63	66	66
23 Fri	69	63	64	67	61	58	51	61	62	74	68	61	67	68	70	62	75	62	65	65	67	66	62	65	65
24 Sat	67	61	64	68	61	56	49	61	61	73	63	61	65	59	68	60	77	67	61	64	66	64	61	64	65
25 Sun	67	61	64	67	60	55	43	61	60	73	63	60	66		69	63	74	63	63	64	66	64	61	64	64
26 Mon	68	62	64	67	61	56	48	62	60	73	63	59	66		68	59	74	61	62	64	72	64	61	63	64
27 Tue	67	61	64	68	61	57	51	60	59	72	62	59	65	64	69	59	74	61	60	64	68	64	60	64	63
28 Wed	68	62	64	67	61	55	49	59	58	74	63	61	66	67	70	62	76	63	63	66	73	68	63	66	66
29 Thu	67	61	63	67	61	57	51	58	57	74	64	61	66	67	71	62	77	64	65	67	73	65	64	67	66
30 Fri	65	60	61	65	58	55	52	57	56	73	67	59	66	66	70	62	77	64	64	67	70	65	63	66	66



Runway Utilization Report
Summary of Runway Use (Average)
 Los Angeles International Airport

Period : 04/01/2023 to 06/30/2023

Airline : ALL

Aircraft : ALL

Time Period	Percent Daily Operations Per Runway								Average Operations	Runway Complex		Runway Flow		In Board	Out Board	
	06L	06R	07L	07R	24L	24R	25L	25R		South	North	West	East			
Departures																
Total Hours																
24 Hours	0%	0%	<1%	0%	40%	<1%	5%	54%	791	59%	41%	100%	<1 %	95%	5%	
CNEL Hours																
0700 - 1900	0%	0%	<1%	0%	45%	<1%	5%	50%	524	55%	45%	100%	<1 %	95%	5%	
1900 - 2200	0%	0%	0%	0%	47%	0%	4%	49%	99	53%	47%	100%	0%	96%	4%	
2200 - 0700	0%	0%	0%	0%	23%	<1%	5%	72%	168	77%	23%	100%	0%	94%	6%	
Contra Hours																
Midnight - 0630	0%	0%	0%	0%	17%	<1%	8%	74%	92	83%	17%	100%	0%	91%	9%	
0630 - Midnight	0%	0%	<1%	0%	43%	<1%	5%	52%	699	56%	44%	100%	<1 %	95%	5%	
Arrivals																
Total Hours																
24 Hours	<1%	3%	<1%	<1%	<1%	45%	50%	<1%	790	51%	49%	96%	4%	5%	95%	
CNEL Hours																
0700 - 1900	0%	0%	0%	0%	<1%	47%	52%	<1%	508	52%	48%	100%	0%	1%	99%	
1900 - 2200	0%	0%	0%	0%	<1%	48%	52%	<1%	141	52%	48%	100%	0%	<1%	100%	
2200 - 0700	3%	17%	<1%	<1%	<1%	32%	45%	2%	141	48%	52%	80%	20%	21%	79%	
Contra Hours																
Midnight - 0630	7%	46%	<1%	<1%	2%	13%	25%	6%	53	33%	67%	46%	54%	54%	46%	
0630 - Midnight	0%	<1%	0%	0%	<1%	47%	52%	<1%	738	53%	47%	100%	<1 %	<1 %	99%	

All values are rounded to the nearest whole number.



Runway Utilization Report
 Summary of Runway Flow (Average)
 Los Angeles International Airport

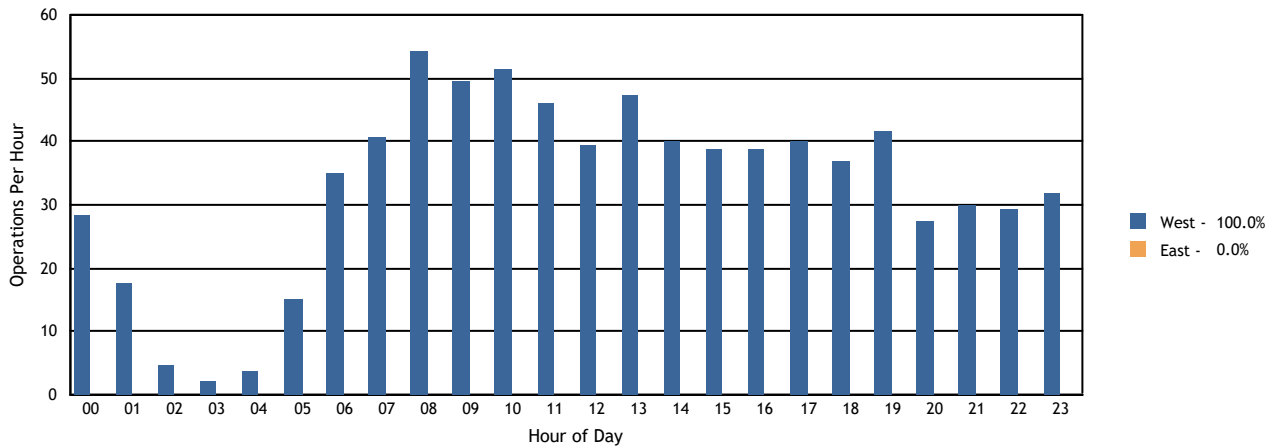
Period: 04/01/2023 to 06/30/2023

Airline : ALL
 Aircraft : ALL

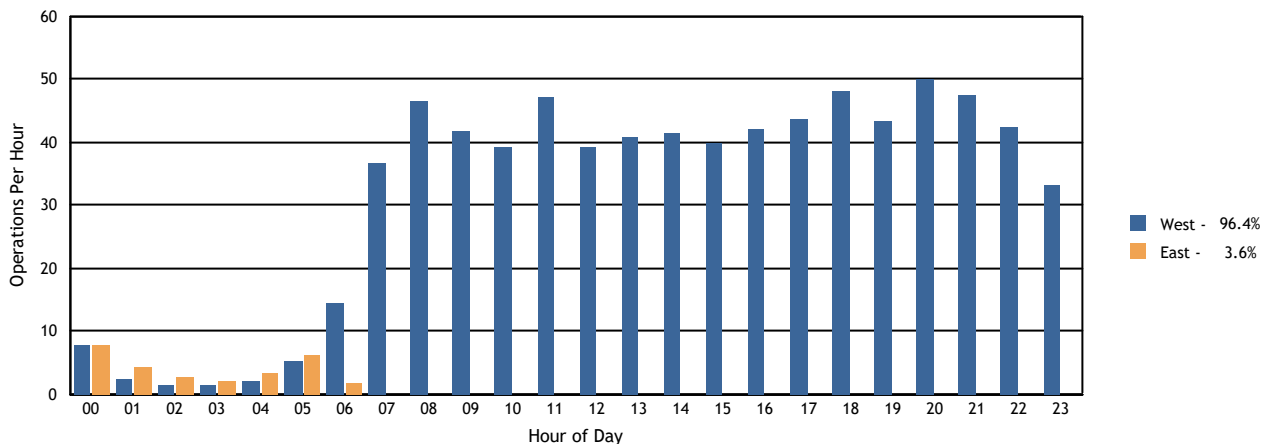
Time Period	Departures			Arrivals			Departures		Arrivals	
	West	East	Average	West	East	Average	West	East	West	East
Total Hours										
24 Hours	791	<1	791	762	29	790	100%	<1%	96%	4%
CNEL Hours										
0700-1900	524	<1	524	508	0	508	100%	<1%	100%	0%
1900-2200	99	0	99	141	0	141	100%	0%	100%	0%
2200-0700	168	0	168	112	29	141	100%	0%	80%	20%
Contra Hours										
Midnight - 0630	92	0	92	24	29	53	100%	0%	46%	54%
0630 - Midnight	699	<1	699	737	<1	738	100%	<1%	100%	<1%

All percentages are rounded to the nearest whole number.

Departures Per Hour by Operational Direction



Arrivals Per Hour by Operational Direction



LAX Average Daily Runway Use By Aircraft Type - 24 Hours Second Quarter 2023

Arrivals (Average Daily Operations)								
Aircraft Type	06L	06R	07L	07R	24L	24R	25L	25R
A19N	0.00	0.00	0.00	0.00	0.00	0.01	0.02	0.00
A20N	0.11	0.30	0.00	0.00	0.00	4.60	20.60	0.15
A21N	0.23	2.53	0.00	0.00	0.38	21.98	32.75	0.42
A306	0.08	0.35	0.00	0.01	0.00	0.05	0.59	0.11
A310	0.00	0.00	0.00	0.00	0.00	0.05	0.01	0.00
A319	0.02	0.11	0.00	0.00	0.12	18.19	10.38	0.08
A320	0.16	1.21	0.00	0.00	0.08	16.30	33.29	0.46
A321	0.56	2.92	0.00	0.00	0.21	19.85	54.36	0.78
A332	0.08	0.37	0.00	0.00	0.04	3.16	3.44	0.07
A333	0.03	0.05	0.00	0.00	0.00	0.86	1.15	0.02
A343	0.00	0.00	0.00	0.00	0.00	0.29	0.20	0.00
A345	0.00	0.00	0.00	0.00	0.00	0.00	0.01	0.00
A359	0.04	0.44	0.00	0.00	0.11	6.38	3.71	0.09
A35K	0.00	0.00	0.00	0.00	0.01	1.99	1.02	0.00
A388	0.01	0.01	0.00	0.01	0.04	3.90	0.10	0.00
AC90	0.00	0.00	0.00	0.00	0.00	0.00	0.02	0.00
ASTR	0.00	0.00	0.00	0.00	0.00	0.03	0.01	0.00
B350	0.00	0.00	0.00	0.00	0.01	1.26	0.87	0.00
B38M	0.14	0.92	0.00	0.00	0.24	25.11	10.49	0.12
B39M	0.09	0.67	0.01	0.00	0.05	7.19	13.43	0.31
B734	0.00	0.00	0.00	0.00	0.00	0.00	0.01	0.00
B737	0.09	1.04	0.00	0.00	0.34	32.41	8.76	0.12
B738	0.20	1.52	0.00	0.00	0.42	38.04	36.43	0.57
B739	0.19	0.77	0.00	0.00	0.20	21.40	24.41	0.33
B744	0.11	0.74	0.01	0.02	0.00	0.20	7.31	0.23
B748	0.04	0.34	0.00	0.13	0.13	2.10	3.07	0.00
B752	0.07	0.24	0.00	0.01	0.02	5.89	8.14	0.16
B753	0.01	0.16	0.00	0.00	0.02	3.89	6.91	0.11
B762	0.02	0.07	0.02	0.00	0.01	0.02	0.98	0.00
B763	0.66	3.66	0.22	0.07	0.04	6.07	13.51	1.02
B764	0.03	0.31	0.00	0.00	0.04	1.24	0.82	0.01
B772	0.10	0.66	0.00	0.00	0.00	2.32	5.86	0.16
B77L	0.32	2.04	0.03	0.10	0.00	0.35	9.14	0.49
B77W	0.02	0.47	0.00	0.00	0.10	13.89	5.66	0.12
B788	0.04	0.46	0.00	0.00	0.03	3.65	3.64	0.13
B789	0.03	0.88	0.00	0.00	0.18	7.97	7.86	0.19
B78X	0.00	0.00	0.00	0.00	0.02	1.97	2.86	0.02
BCS1	0.00	0.00	0.00	0.00	0.00	0.01	0.01	0.01
BCS3	0.00	0.00	0.00	0.00	0.00	0.47	1.64	0.00
BE20	0.00	0.00	0.00	0.00	0.00	0.18	0.01	0.00

Departures (Average Daily Operations)								
Aircraft Type	06L	06R	07L	07R	24L	24R	25L	25R
A19N	0.00	0.00	0.00	0.00	0.00	0.00	0.00	0.04
A20N	0.00	0.00	0.00	0.00	3.52	0.01	0.52	21.77
A21N	0.00	0.00	0.00	0.00	21.02	0.18	0.84	36.27
A306	0.00	0.00	0.00	0.00	0.00	0.00	0.32	0.88
A310	0.00	0.00	0.00	0.00	0.07	0.00	0.00	0.00
A319	0.00	0.00	0.00	0.00	20.36	0.14	0.23	8.27
A320	0.00	0.00	0.00	0.00	17.18	0.08	1.15	33.12
A321	0.00	0.00	0.00	0.00	14.76	0.12	1.34	62.49
A332	0.00	0.00	0.00	0.00	5.02	0.04	0.12	1.97
A333	0.00	0.00	0.00	0.00	1.05	0.00	0.04	1.02
A343	0.00	0.00	0.00	0.00	0.34	0.00	0.00	0.14
A345	0.00	0.00	0.00	0.00	0.00	0.00	0.00	0.01
A359	0.00	0.00	0.00	0.00	5.58	0.00	0.12	5.12
A35K	0.00	0.00	0.00	0.00	1.29	0.00	0.00	1.75
A388	0.00	0.00	0.00	0.00	2.05	0.00	2.02	0.00
AC90	0.00	0.00	0.00	0.00	0.00	0.00	0.01	0.01
ASTR	0.00	0.00	0.00	0.00	0.01	0.00	0.00	0.03
B350	0.00	0.00	0.00	0.00	0.33	0.00	0.49	1.32
B38M	0.00	0.00	0.00	0.00	29.12	0.24	0.19	7.55
B39M	0.00	0.00	0.00	0.00	4.73	0.01	0.52	16.44
B734	0.00	0.00	0.00	0.00	0.00	0.00	0.00	0.01
B737	0.00	0.00	0.00	0.00	37.46	0.44	0.51	4.44
B738	0.00	0.00	0.00	0.00	42.79	0.35	0.86	33.16
B739	0.00	0.00	0.00	0.00	17.49	0.04	0.38	29.44
B744	0.00	0.00	0.00	0.00	0.04	0.00	2.38	6.18
B748	0.00	0.00	0.00	0.00	1.02	0.00	4.75	0.04
B752	0.00	0.00	0.00	0.00	7.07	0.03	0.23	7.29
B753	0.00	0.00	0.00	0.00	3.36	0.02	0.27	7.54
B762	0.00	0.00	0.00	0.00	0.00	0.00	0.26	0.88
B763	0.00	0.00	0.00	0.00	8.59	0.10	3.82	12.76
B764	0.00	0.00	0.00	0.00	2.24	0.01	0.01	0.18
B772	0.00	0.00	0.00	0.00	1.62	0.01	0.12	7.40
B77L	0.00	0.00	0.00	0.00	0.05	0.00	3.75	8.67
B77W	0.00	0.00	0.00	0.00	6.33	0.00	0.23	13.77
B788	0.00	0.00	0.00	0.00	4.07	0.01	0.21	3.68
B789	0.00	0.00	0.00	0.00	5.76	0.01	0.19	11.27
B78X	0.00	0.00	0.00	0.00	1.52	0.01	0.01	3.36
BCS1	0.00	0.00	0.00	0.00	0.03	0.00	0.00	0.00
BCS3	0.00	0.00	0.00	0.00	1.08	0.00	0.00	1.04
BE20	0.00	0.00	0.00	0.00	0.04	0.00	0.01	0.13

LAX Noise Management

Source: LAX ANOMS, based on available FAA radar flight track data.

note: Aircraft Type for certain military operations may not be available through our data source, therefore will not be included in the report.

LAX Average Daily Runway Use By Aircraft Type - 24 Hours Second Quarter 2023

Arrivals (Average Daily Operations)								
Aircraft Type	06L	06R	07L	07R	24L	24R	25L	25R
BE30	0.00	0.00	0.00	0.00	0.00	0.00	0.01	0.00
BE36	0.00	0.00	0.00	0.00	0.00	0.00	0.01	0.00
BE40	0.00	0.00	0.00	0.00	0.00	0.02	0.23	0.01
BE99	0.00	0.00	0.00	0.00	0.00	0.62	0.09	0.00
BE9L	0.00	0.00	0.00	0.00	0.00	0.01	0.00	0.00
C172	0.00	0.00	0.00	0.00	0.00	0.01	0.00	0.00
C208	0.00	0.00	0.00	0.00	0.00	0.02	2.12	0.13
C25A	0.00	0.00	0.00	0.00	0.01	0.16	0.19	0.00
C25B	0.00	0.00	0.00	0.00	0.00	0.15	0.52	0.01
C25C	0.00	0.00	0.00	0.00	0.00	0.03	0.08	0.00
C510	0.00	0.00	0.00	0.00	0.00	0.01	0.02	0.00
C525	0.00	0.00	0.00	0.00	0.00	0.02	0.04	0.00
C550	0.00	0.00	0.00	0.00	0.00	0.02	0.05	0.00
C55B	0.00	0.00	0.00	0.00	0.00	0.01	0.00	0.00
C560	0.00	0.00	0.00	0.00	0.01	0.02	0.09	0.00
C56X	0.00	0.01	0.00	0.00	0.00	0.38	0.81	0.00
C650	0.00	0.00	0.00	0.00	0.00	0.00	0.01	0.00
C680	0.00	0.00	0.00	0.00	0.01	0.23	0.38	0.01
C68A	0.00	0.00	0.00	0.00	0.00	0.49	1.24	0.07
C700	0.00	0.00	0.00	0.00	0.00	0.30	0.53	0.00
C750	0.00	0.00	0.00	0.00	0.01	0.24	0.65	0.00
CL30	0.00	0.05	0.00	0.00	0.01	1.42	3.09	0.03
CL35	0.00	0.00	0.00	0.00	0.00	0.01	0.08	0.00
CL60	0.00	0.00	0.00	0.00	0.00	0.38	1.27	0.01
CRJ2	0.00	0.00	0.00	0.00	0.05	3.93	1.71	0.03
CRJ7	0.00	0.01	0.00	0.00	0.04	4.74	1.98	0.02
E135	0.00	0.01	0.00	0.00	0.00	0.42	1.56	0.02
E145	0.00	0.00	0.00	0.00	0.00	0.14	0.57	0.00
E170	0.01	0.03	0.00	0.00	0.32	45.93	22.30	0.30
E190	0.00	0.00	0.00	0.00	0.00	0.02	0.22	0.00
E35L	0.00	0.01	0.00	0.00	0.00	0.00	0.22	0.00
E50P	0.00	0.00	0.00	0.00	0.00	0.00	0.02	0.00
E545	0.00	0.00	0.00	0.00	0.00	0.13	0.52	0.01
E550	0.00	0.00	0.00	0.00	0.00	0.15	0.34	0.00
E55P	0.00	0.00	0.00	0.00	0.00	0.73	1.09	0.01
E75L	0.00	0.02	0.00	0.00	0.08	10.95	5.97	0.04
E75S	0.00	0.00	0.00	0.00	0.01	0.85	0.55	0.00
F2TH	0.00	0.01	0.00	0.00	0.00	0.09	0.59	0.00
F900	0.01	0.00	0.00	0.00	0.00	0.13	0.46	0.01
FA20	0.00	0.00	0.00	0.00	0.00	0.00	0.02	0.00

Departures (Average Daily Operations)								
Aircraft Type	06L	06R	07L	07R	24L	24R	25L	25R
BE36	0.00	0.00	0.00	0.00	0.00	0.00	0.00	0.01
BE40	0.00	0.00	0.00	0.00	0.00	0.00	0.11	0.15
BE99	0.00	0.00	0.00	0.00	0.08	0.00	0.00	0.62
BE9L	0.00	0.00	0.00	0.00	0.00	0.00	0.00	0.01
C17	0.00	0.00	0.00	0.00	0.02	0.00	0.00	0.00
C172	0.00	0.00	0.00	0.00	0.00	0.00	0.00	0.01
C208	0.00	0.00	0.00	0.00	0.00	0.00	0.03	2.23
C25A	0.00	0.00	0.00	0.00	0.01	0.00	0.04	0.31
C25B	0.00	0.00	0.00	0.00	0.01	0.00	0.16	0.51
C25C	0.00	0.00	0.00	0.00	0.01	0.00	0.02	0.08
C500	0.00	0.00	0.00	0.00	0.00	0.00	0.01	0.00
C510	0.00	0.00	0.00	0.00	0.01	0.00	0.00	0.02
C525	0.00	0.00	0.00	0.00	0.00	0.00	0.00	0.07
C550	0.00	0.00	0.00	0.00	0.00	0.00	0.02	0.05
C55B	0.00	0.00	0.00	0.00	0.00	0.00	0.00	0.01
C560	0.00	0.00	0.00	0.00	0.00	0.00	0.07	0.05
C56X	0.00	0.00	0.00	0.00	0.09	0.00	0.44	0.67
C650	0.00	0.00	0.00	0.00	0.00	0.00	0.00	0.01
C680	0.00	0.00	0.00	0.00	0.01	0.00	0.13	0.47
C68A	0.00	0.00	0.00	0.00	0.08	0.00	0.67	1.07
C700	0.00	0.00	0.00	0.00	0.03	0.00	0.22	0.56
C750	0.00	0.00	0.00	0.00	0.03	0.00	0.36	0.51
CL30	0.00	0.00	0.00	0.00	0.24	0.01	1.51	2.85
CL35	0.00	0.00	0.00	0.00	0.00	0.00	0.02	0.05
CL60	0.00	0.00	0.00	0.00	0.07	0.00	0.54	1.12
CRJ2	0.00	0.00	0.00	0.00	2.05	0.01	0.12	3.56
CRJ7	0.00	0.00	0.00	0.00	2.08	0.00	0.04	4.70
E135	0.00	0.00	0.00	0.00	0.00	0.00	0.56	1.44
E145	0.00	0.00	0.00	0.00	0.00	0.00	0.25	0.46
E170	0.00	0.00	0.00	0.00	29.92	0.29	0.34	38.38
E190	0.00	0.00	0.00	0.00	0.01	0.00	0.04	0.18
E35L	0.00	0.00	0.00	0.00	0.01	0.00	0.08	0.14
E50P	0.00	0.00	0.00	0.00	0.00	0.00	0.00	0.02
E545	0.00	0.00	0.00	0.00	0.03	0.00	0.18	0.45
E550	0.00	0.00	0.00	0.00	0.01	0.00	0.13	0.35
E55P	0.00	0.00	0.00	0.00	0.14	0.00	0.62	1.05
E75L	0.00	0.00	0.00	0.00	12.75	0.07	0.01	4.23
E75S	0.00	0.00	0.00	0.00	1.35	0.01	0.01	0.03
F2TH	0.00	0.00	0.00	0.00	0.01	0.00	0.20	0.48
F900	0.00	0.00	0.00	0.00	0.02	0.00	0.19	0.37

LAX Noise Management

Source: LAX ANOMS, based on available FAA radar flight track data.

note: Aircraft Type for certain military operations may not be available through our data source, therefore will not be included in the report.

LAX Average Daily Runway Use By Aircraft Type - 24 Hours Second Quarter 2023

Arrivals (Average Daily Operations)								
Aircraft Type	06L	06R	07L	07R	24L	24R	25L	25R
FA50	0.00	0.00	0.00	0.00	0.00	0.08	0.21	0.00
FA7X	0.00	0.03	0.00	0.00	0.01	0.20	0.44	0.01
FA8X	0.00	0.01	0.00	0.00	0.00	0.01	0.08	0.00
G150	0.00	0.00	0.00	0.00	0.00	0.03	0.10	0.01
G280	0.00	0.00	0.00	0.00	0.00	0.07	0.43	0.00
GA5C	0.00	0.00	0.00	0.00	0.01	0.03	0.15	0.00
GA6C	0.00	0.00	0.00	0.00	0.00	0.07	0.26	0.01
GALX	0.00	0.00	0.00	0.00	0.00	0.05	0.18	0.01
GL5T	0.00	0.01	0.00	0.00	0.00	0.21	0.34	0.01
GL7T	0.00	0.00	0.00	0.00	0.01	0.20	0.59	0.01
GLEX	0.00	0.01	0.00	0.00	0.00	0.74	1.75	0.02
GLF4	0.01	0.00	0.02	0.00	0.01	0.57	1.86	0.02
GLF5	0.00	0.08	0.00	0.00	0.01	0.52	1.58	0.03
GLF6	0.00	0.02	0.00	0.00	0.00	0.55	1.62	0.02
H25B	0.00	0.03	0.00	0.02	0.01	0.11	1.01	0.03
H25C	0.00	0.00	0.00	0.00	0.00	0.00	0.04	0.00
HA4T	0.00	0.00	0.00	0.00	0.00	0.00	0.01	0.00
HDJT	0.00	0.00	0.00	0.00	0.00	0.02	0.09	0.00
J328	0.00	0.00	0.00	0.00	0.00	0.01	0.00	0.00
LJ31	0.00	0.00	0.00	0.00	0.00	0.00	0.01	0.00
LJ35	0.00	0.00	0.00	0.00	0.00	0.00	0.09	0.00
LJ45	0.00	0.01	0.00	0.00	0.00	0.19	0.58	0.01
LJ60	0.00	0.00	0.00	0.00	0.00	0.03	0.20	0.00
LJ75	0.00	0.00	0.00	0.00	0.00	0.00	0.11	0.00
MD11	0.10	0.73	0.01	0.04	0.00	0.03	1.75	0.21
P28A	0.00	0.00	0.00	0.00	0.01	0.00	0.01	0.00
PA46	0.01	0.00	0.00	0.00	0.00	0.01	0.00	0.00
PC12	0.00	0.01	0.00	0.00	0.00	0.20	0.18	0.00
PC24	0.00	0.00	0.00	0.00	0.00	0.01	0.05	0.00
PRM1	0.00	0.00	0.00	0.00	0.00	0.07	0.13	0.00
S22T	0.00	0.00	0.00	0.00	0.00	0.02	0.00	0.00
SR22	0.00	0.00	0.00	0.00	0.00	0.01	0.00	0.00
SF50	0.00	0.00	0.00	0.00	0.00	0.13	0.12	0.00
LJ55	0.00	0.00	0.00	0.00	0.00	0.00	0.01	0.01
C501	0.00	0.00	0.00	0.00	0.00	0.02	0.00	0.00
P210	0.00	0.00	0.00	0.00	0.00	0.01	0.00	0.00
BE35	0.00	0.00	0.00	0.00	0.00	0.01	0.01	0.00
A339	0.00	0.01	0.00	0.00	0.02	2.32	0.80	0.00
B712	0.00	0.00	0.00	0.00	0.00	0.00	0.01	0.00
FA10	0.00	0.00	0.00	0.00	0.00	0.00	0.01	0.00

Departures (Average Daily Operations)								
Aircraft Type	06L	06R	07L	07R	24L	24R	25L	25R
FA20	0.00	0.00	0.00	0.00	0.00	0.00	0.00	0.02
FA50	0.00	0.00	0.00	0.00	0.00	0.00	0.13	0.14
FA7X	0.00	0.00	0.00	0.00	0.01	0.00	0.24	0.45
FA8X	0.00	0.00	0.00	0.00	0.00	0.00	0.05	0.03
G150	0.00	0.00	0.00	0.00	0.01	0.00	0.05	0.07
G280	0.00	0.00	0.00	0.00	0.02	0.00	0.18	0.27
GA5C	0.00	0.00	0.00	0.00	0.01	0.00	0.10	0.10
GA6C	0.00	0.00	0.00	0.00	0.01	0.00	0.10	0.24
GALX	0.00	0.00	0.00	0.00	0.01	0.00	0.14	0.09
GL5T	0.00	0.00	0.00	0.00	0.04	0.00	0.20	0.34
GL7T	0.00	0.00	0.00	0.00	0.05	0.00	0.30	0.52
GLEX	0.00	0.00	0.00	0.00	0.10	0.01	0.89	1.51
GLF4	0.00	0.00	0.00	0.00	0.07	0.00	0.80	1.66
GLF5	0.00	0.00	0.00	0.00	0.09	0.01	0.63	1.40
GLF6	0.00	0.00	0.00	0.00	0.10	0.00	0.73	1.27
H25B	0.00	0.00	0.00	0.00	0.03	0.00	0.32	0.86
H25C	0.00	0.00	0.00	0.00	0.00	0.00	0.01	0.03
HA4T	0.00	0.00	0.00	0.00	0.00	0.00	0.00	0.01
HDJT	0.00	0.00	0.00	0.00	0.01	0.00	0.02	0.08
J328	0.00	0.00	0.00	0.00	0.00	0.00	0.00	0.01
LJ31	0.00	0.00	0.00	0.00	0.00	0.00	0.00	0.01
LJ35	0.00	0.00	0.00	0.00	0.00	0.00	0.03	0.05
LJ45	0.00	0.00	0.00	0.00	0.05	0.00	0.23	0.49
LJ60	0.00	0.00	0.00	0.00	0.01	0.00	0.02	0.19
LJ75	0.00	0.00	0.00	0.00	0.00	0.00	0.04	0.07
MD11	0.00	0.00	0.00	0.00	0.01	0.00	1.16	1.68
P28A	0.00	0.00	0.00	0.00	0.00	0.00	0.00	0.02
PA46	0.00	0.00	0.00	0.00	0.00	0.00	0.00	0.02
PC12	0.00	0.00	0.00	0.00	0.04	0.00	0.07	0.25
PC24	0.00	0.00	0.00	0.00	0.00	0.00	0.02	0.04
PRM1	0.00	0.00	0.00	0.00	0.01	0.00	0.01	0.18
S22T	0.00	0.00	0.00	0.00	0.00	0.00	0.00	0.02
SR22	0.00	0.00	0.00	0.00	0.00	0.00	0.00	0.01
SF50	0.00	0.00	0.00	0.00	0.04	0.00	0.00	0.21
LJ55	0.00	0.00	0.00	0.00	0.00	0.00	0.01	0.01
C501	0.00	0.00	0.00	0.00	0.00	0.00	0.00	0.02
BE35	0.00	0.00	0.00	0.00	0.01	0.00	0.00	0.01
A339	0.00	0.00	0.01	0.00	1.95	0.00	0.04	1.15
B712	0.00	0.00	0.00	0.00	0.01	0.00	0.00	0.00
FA10	0.00	0.00	0.00	0.00	0.00	0.00	0.00	0.01

LAX Noise Management

Source: LAX ANOMS, based on available FAA radar flight track data.

note: Aircraft Type for certain military operations may not be available through our data source, therefore will not be included in the report.

LAX Average Daily Runway Use By Aircraft Type - 24 Hours Second Quarter 2023

Arrivals (Average Daily Operations)								
Aircraft Type	06L	06R	07L	07R	24L	24R	25L	25R
EPIC	0.00	0.02	0.00	0.01	0.00	0.00	0.04	0.00
C340	0.00	0.00	0.00	0.00	0.00	0.00	0.01	0.00
DA62	0.00	0.00	0.00	0.00	0.00	0.00	0.01	0.00
SONX	0.00	0.00	0.00	0.00	0.00	0.01	0.00	0.00

Departures (Average Daily Operations)								
Aircraft Type	06L	06R	07L	07R	24L	24R	25L	25R
EPIC	0.00	0.00	0.00	0.00	0.00	0.00	0.01	0.07
C340	0.00	0.00	0.00	0.00	0.00	0.00	0.00	0.01

LAX Noise Management

Source: LAX ANOMS, based on available FAA radar flight track data.

note: Aircraft Type for certain military operations may not be available through our data source, therefore will not be included in the report.

**LAX Average Daily Runway Use By Aircraft Type - Night Time (10pm - 7am)
Second Quarter 2023**

Arrivals (Average Daily Operations)								
Aircraft Type	06L	06R	07L	07R	24L	24R	25L	25R
A20N	0.11	0.30	0.00	0.00	0.00	0.96	6.35	0.03
A21N	0.23	2.53	0.00	0.00	0.23	6.23	6.19	0.11
A306	0.08	0.35	0.00	0.01	0.00	0.05	0.35	0.11
A319	0.02	0.11	0.00	0.00	0.01	1.32	1.35	0.00
A320	0.16	1.21	0.00	0.00	0.02	1.98	7.22	0.10
A321	0.56	2.92	0.00	0.00	0.08	4.58	9.92	0.23
A332	0.08	0.37	0.00	0.00	0.04	0.91	0.45	0.03
A333	0.03	0.05	0.00	0.00	0.00	0.01	0.07	0.01
A359	0.04	0.44	0.00	0.00	0.03	0.18	0.23	0.05
A35K	0.00	0.00	0.00	0.00	0.00	0.08	0.01	0.00
A388	0.01	0.01	0.00	0.01	0.00	0.16	0.00	0.00
B350	0.00	0.00	0.00	0.00	0.00	0.15	0.10	0.00
B38M	0.14	0.92	0.00	0.00	0.05	5.01	2.45	0.00
B39M	0.09	0.67	0.01	0.00	0.01	0.88	2.77	0.18
B737	0.09	1.04	0.00	0.00	0.07	6.62	0.77	0.02
B738	0.20	1.52	0.00	0.00	0.11	5.09	4.55	0.16
B739	0.19	0.77	0.00	0.00	0.00	2.86	3.71	0.03
B744	0.11	0.74	0.01	0.02	0.00	0.09	1.65	0.19
B748	0.04	0.34	0.00	0.13	0.09	0.12	0.77	0.00
B752	0.07	0.24	0.00	0.01	0.00	0.90	0.68	0.00
B753	0.01	0.16	0.00	0.00	0.00	0.71	0.88	0.04
B762	0.02	0.07	0.02	0.00	0.01	0.01	0.46	0.00
B763	0.66	3.66	0.22	0.07	0.03	1.07	4.07	0.98
B764	0.03	0.31	0.00	0.00	0.04	0.19	0.09	0.00
B772	0.10	0.66	0.00	0.00	0.00	0.24	0.93	0.14
B77L	0.32	2.04	0.03	0.10	0.00	0.22	2.00	0.41
B77W	0.02	0.47	0.00	0.00	0.00	0.75	0.32	0.09
B788	0.04	0.46	0.00	0.00	0.00	0.09	0.30	0.09
B789	0.03	0.88	0.00	0.00	0.07	0.22	0.77	0.12
B78X	0.00	0.00	0.00	0.00	0.00	0.01	0.01	0.00
BCS1	0.00	0.00	0.00	0.00	0.00	0.00	0.01	0.00
BCS3	0.00	0.00	0.00	0.00	0.00	0.02	0.04	0.00
BE20	0.00	0.00	0.00	0.00	0.00	0.02	0.00	0.00
BE30	0.00	0.00	0.00	0.00	0.00	0.00	0.01	0.00
BE40	0.00	0.00	0.00	0.00	0.00	0.00	0.03	0.00
BE99	0.00	0.00	0.00	0.00	0.00	0.62	0.09	0.00
C208	0.00	0.00	0.00	0.00	0.00	0.00	0.02	0.00
C25A	0.00	0.00	0.00	0.00	0.00	0.00	0.02	0.00
C56X	0.00	0.01	0.00	0.00	0.00	0.00	0.08	0.00
C68A	0.00	0.00	0.00	0.00	0.00	0.01	0.04	0.00

Departures (Average Daily Operations)								
Aircraft Type	06L	06R	07L	07R	24L	24R	25L	25R
A19N	0.00	0.00	0.00	0.00	0.00	0.00	0.00	0.01
A20N	0.00	0.00	0.00	0.00	0.98	0.00	0.26	7.15
A21N	0.00	0.00	0.00	0.00	3.21	0.05	0.47	11.68
A306	0.00	0.00	0.00	0.00	0.00	0.00	0.10	0.65
A319	0.00	0.00	0.00	0.00	1.81	0.03	0.09	2.02
A320	0.00	0.00	0.00	0.00	1.35	0.01	0.73	7.07
A321	0.00	0.00	0.00	0.00	3.97	0.03	0.70	17.22
A332	0.00	0.00	0.00	0.00	0.08	0.00	0.01	0.16
A333	0.00	0.00	0.00	0.00	0.07	0.00	0.01	0.15
A343	0.00	0.00	0.00	0.00	0.00	0.00	0.00	0.01
A359	0.00	0.00	0.00	0.00	1.62	0.00	0.09	2.92
A35K	0.00	0.00	0.00	0.00	0.25	0.00	0.00	0.01
A388	0.00	0.00	0.00	0.00	0.29	0.00	0.76	0.00
ASTR	0.00	0.00	0.00	0.00	0.01	0.00	0.00	0.00
B350	0.00	0.00	0.00	0.00	0.08	0.00	0.00	0.30
B38M	0.00	0.00	0.00	0.00	3.78	0.05	0.04	2.05
B39M	0.00	0.00	0.00	0.00	1.40	0.01	0.33	5.27
B737	0.00	0.00	0.00	0.00	5.15	0.21	0.12	3.30
B738	0.00	0.00	0.00	0.00	4.00	0.12	0.32	8.00
B739	0.00	0.00	0.00	0.00	1.73	0.01	0.12	7.55
B744	0.00	0.00	0.00	0.00	0.00	0.00	0.29	3.53
B748	0.00	0.00	0.00	0.00	0.35	0.00	2.29	0.04
B752	0.00	0.00	0.00	0.00	1.47	0.00	0.04	2.98
B753	0.00	0.00	0.00	0.00	0.70	0.01	0.23	2.02
B762	0.00	0.00	0.00	0.00	0.00	0.00	0.05	0.65
B763	0.00	0.00	0.00	0.00	1.44	0.01	0.71	8.75
B764	0.00	0.00	0.00	0.00	0.77	0.01	0.00	0.13
B772	0.00	0.00	0.00	0.00	0.15	0.00	0.02	2.49
B77L	0.00	0.00	0.00	0.00	0.00	0.00	0.36	4.14
B77W	0.00	0.00	0.00	0.00	0.43	0.00	0.22	6.87
B788	0.00	0.00	0.00	0.00	0.26	0.00	0.16	0.91
B789	0.00	0.00	0.00	0.00	0.79	0.00	0.18	4.16
B78X	0.00	0.00	0.00	0.00	0.00	0.00	0.00	0.04
BCS3	0.00	0.00	0.00	0.00	0.16	0.00	0.00	0.05
BE20	0.00	0.00	0.00	0.00	0.00	0.00	0.00	0.03
BE40	0.00	0.00	0.00	0.00	0.00	0.00	0.00	0.01
BE99	0.00	0.00	0.00	0.00	0.04	0.00	0.00	0.62
C208	0.00	0.00	0.00	0.00	0.00	0.00	0.00	0.05
C25A	0.00	0.00	0.00	0.00	0.00	0.00	0.00	0.04
C25B	0.00	0.00	0.00	0.00	0.00	0.00	0.00	0.03

LAX Noise Management

Source: LAX ANOMS, based on available FAA radar flight track data.

note: Aircraft Type for certain military operations may not be available through our data source, therefore will not be included in the report.

LAX Average Daily Runway Use By Aircraft Type - Night Time (10pm - 7am)
Second Quarter 2023

Arrivals (Average Daily Operations)								
Aircraft Type	06L	06R	07L	07R	24L	24R	25L	25R
C700	0.00	0.00	0.00	0.00	0.00	0.02	0.04	0.00
C750	0.00	0.00	0.00	0.00	0.00	0.02	0.03	0.00
CL30	0.00	0.05	0.00	0.00	0.00	0.04	0.18	0.00
CL35	0.00	0.00	0.00	0.00	0.00	0.00	0.01	0.00
CL60	0.00	0.00	0.00	0.00	0.00	0.01	0.11	0.00
CRJ2	0.00	0.00	0.00	0.00	0.00	0.01	0.02	0.00
CRJ7	0.00	0.01	0.00	0.00	0.00	0.18	0.04	0.00
E135	0.00	0.01	0.00	0.00	0.00	0.01	0.02	0.00
E145	0.00	0.00	0.00	0.00	0.00	0.00	0.01	0.00
E170	0.01	0.03	0.00	0.00	0.00	1.56	0.66	0.00
E190	0.00	0.00	0.00	0.00	0.00	0.00	0.02	0.00
E35L	0.00	0.01	0.00	0.00	0.00	0.00	0.01	0.00
E545	0.00	0.00	0.00	0.00	0.00	0.00	0.01	0.01
E550	0.00	0.00	0.00	0.00	0.00	0.01	0.01	0.00
E55P	0.00	0.00	0.00	0.00	0.00	0.04	0.02	0.00
E75L	0.00	0.02	0.00	0.00	0.00	0.19	0.29	0.00
E75S	0.00	0.00	0.00	0.00	0.00	0.04	0.02	0.00
F2TH	0.00	0.01	0.00	0.00	0.00	0.00	0.02	0.00
F900	0.01	0.00	0.00	0.00	0.00	0.02	0.02	0.00
FA7X	0.00	0.03	0.00	0.00	0.00	0.02	0.07	0.00
FA8X	0.00	0.01	0.00	0.00	0.00	0.00	0.00	0.00
G150	0.00	0.00	0.00	0.00	0.00	0.00	0.01	0.00
G280	0.00	0.00	0.00	0.00	0.00	0.00	0.02	0.00
GA6C	0.00	0.00	0.00	0.00	0.00	0.01	0.00	0.00
GALX	0.00	0.00	0.00	0.00	0.00	0.00	0.02	0.00
GL5T	0.00	0.01	0.00	0.00	0.00	0.00	0.05	0.00
GL7T	0.00	0.00	0.00	0.00	0.00	0.00	0.03	0.00
GLEX	0.00	0.01	0.00	0.00	0.00	0.01	0.11	0.01
GLF4	0.01	0.00	0.02	0.00	0.00	0.04	0.14	0.00
GLF5	0.00	0.08	0.00	0.00	0.00	0.04	0.15	0.01
GLF6	0.00	0.02	0.00	0.00	0.00	0.02	0.20	0.00
H25B	0.00	0.03	0.00	0.02	0.00	0.01	0.05	0.03
LJ35	0.00	0.00	0.00	0.00	0.00	0.00	0.01	0.00
LJ45	0.00	0.01	0.00	0.00	0.00	0.01	0.01	0.00
LJ60	0.00	0.00	0.00	0.00	0.00	0.00	0.03	0.00
MD11	0.10	0.73	0.01	0.04	0.00	0.01	0.59	0.21
PC12	0.00	0.01	0.00	0.00	0.00	0.02	0.02	0.00
FA50	0.00	0.00	0.00	0.00	0.00	0.01	0.03	0.00
PRM1	0.00	0.00	0.00	0.00	0.00	0.00	0.02	0.00
H25C	0.00	0.00	0.00	0.00	0.00	0.00	0.01	0.00
PC24	0.00	0.00	0.00	0.00	0.00	0.00	0.01	0.00

Departures (Average Daily Operations)								
Aircraft Type	06L	06R	07L	07R	24L	24R	25L	25R
C525	0.00	0.00	0.00	0.00	0.00	0.00	0.00	0.01
C56X	0.00	0.00	0.00	0.00	0.00	0.00	0.00	0.07
C680	0.00	0.00	0.00	0.00	0.00	0.00	0.00	0.04
C68A	0.00	0.00	0.00	0.00	0.00	0.00	0.00	0.08
C700	0.00	0.00	0.00	0.00	0.01	0.00	0.00	0.07
C750	0.00	0.00	0.00	0.00	0.00	0.00	0.00	0.07
CL30	0.00	0.00	0.00	0.00	0.02	0.00	0.00	0.22
CL35	0.00	0.00	0.00	0.00	0.00	0.00	0.00	0.01
CL60	0.00	0.00	0.00	0.00	0.00	0.00	0.00	0.09
CRJ2	0.00	0.00	0.00	0.00	0.00	0.00	0.00	0.13
CRJ7	0.00	0.00	0.00	0.00	0.15	0.00	0.01	0.77
E135	0.00	0.00	0.00	0.00	0.00	0.00	0.01	0.11
E145	0.00	0.00	0.00	0.00	0.00	0.00	0.02	0.02
E170	0.00	0.00	0.00	0.00	0.52	0.00	0.00	2.08
E190	0.00	0.00	0.00	0.00	0.00	0.00	0.00	0.04
E545	0.00	0.00	0.00	0.00	0.00	0.00	0.00	0.03
E550	0.00	0.00	0.00	0.00	0.00	0.00	0.00	0.03
E55P	0.00	0.00	0.00	0.00	0.00	0.00	0.00	0.10
E75L	0.00	0.00	0.00	0.00	0.55	0.00	0.00	0.99
F2TH	0.00	0.00	0.00	0.00	0.00	0.00	0.00	0.01
F900	0.00	0.00	0.00	0.00	0.00	0.00	0.01	0.03
FA20	0.00	0.00	0.00	0.00	0.00	0.00	0.00	0.01
FA7X	0.00	0.00	0.00	0.00	0.00	0.00	0.00	0.09
FA8X	0.00	0.00	0.00	0.00	0.00	0.00	0.00	0.01
G150	0.00	0.00	0.00	0.00	0.00	0.00	0.00	0.02
G280	0.00	0.00	0.00	0.00	0.00	0.00	0.01	0.00
GA5C	0.00	0.00	0.00	0.00	0.00	0.00	0.00	0.02
GA6C	0.00	0.00	0.00	0.00	0.00	0.00	0.00	0.02
GL5T	0.00	0.00	0.00	0.00	0.00	0.00	0.00	0.04
GL7T	0.00	0.00	0.00	0.00	0.00	0.00	0.00	0.14
GLEX	0.00	0.00	0.00	0.00	0.00	0.00	0.03	0.23
GLF4	0.00	0.00	0.00	0.00	0.00	0.00	0.00	0.20
GLF5	0.00	0.00	0.00	0.00	0.00	0.00	0.02	0.24
GLF6	0.00	0.00	0.00	0.00	0.01	0.00	0.00	0.21
H25B	0.00	0.00	0.00	0.00	0.00	0.00	0.00	0.10
J328	0.00	0.00	0.00	0.00	0.00	0.00	0.00	0.01
LJ45	0.00	0.00	0.00	0.00	0.01	0.00	0.00	0.08
LJ60	0.00	0.00	0.00	0.00	0.00	0.00	0.00	0.07
LJ75	0.00	0.00	0.00	0.00	0.00	0.00	0.00	0.01
MD11	0.00	0.00	0.00	0.00	0.00	0.00	0.10	0.64
PC12	0.00	0.00	0.00	0.00	0.01	0.00	0.00	0.07

LAX Noise Management

Source: LAX ANOMS, based on available FAA radar flight track data.

note: Aircraft Type for certain military operations may not be available through our data source, therefore will not be included in the report.

**LAX Average Daily Runway Use By Aircraft Type - Night Time (10pm - 7am)
Second Quarter 2023**

Arrivals (Average Daily Operations)								
Aircraft Type	06L	06R	07L	07R	24L	24R	25L	25R
A339	0.00	0.01	0.00	0.00	0.00	0.04	0.00	0.00
EPIC	0.00	0.02	0.00	0.01	0.00	0.00	0.00	0.00
PA46	0.01	0.00	0.00	0.00	0.00	0.00	0.00	0.00
DA62	0.00	0.00	0.00	0.00	0.00	0.00	0.01	0.00
B777	0.00	0.01	0.00	0.00	0.00	0.00	0.00	0.00

Departures (Average Daily Operations)								
Aircraft Type	06L	06R	07L	07R	24L	24R	25L	25R
FA50	0.00	0.00	0.00	0.00	0.00	0.00	0.00	0.03
PRM1	0.00	0.00	0.00	0.00	0.00	0.00	0.00	0.02
H25C	0.00	0.00	0.00	0.00	0.00	0.00	0.00	0.01
PC24	0.00	0.00	0.00	0.00	0.00	0.00	0.00	0.01
A339	0.00	0.00	0.00	0.00	0.16	0.00	0.00	0.02
EPIC	0.00	0.00	0.00	0.00	0.00	0.00	0.00	0.02
SF50	0.00	0.00	0.00	0.00	0.00	0.00	0.00	0.01
PA46	0.00	0.00	0.00	0.00	0.00	0.00	0.00	0.01
DA62	0.00	0.00	0.00	0.00	0.00	0.00	0.00	0.01
C501	0.00	0.00	0.00	0.00	0.00	0.00	0.00	0.01
B777	0.00	0.00	0.00	0.00	0.00	0.00	0.00	0.01

LAX Noise Management

Source: LAX ANOMS, based on available FAA radar flight track data.

note: Aircraft Type for certain military operations may not be available through our data source, therefore will not be included in the report.

LAX Average Daily Runway Use By Aircraft Group - 24 Hours Second Quarter 2023

Arrivals (Average Daily Operations)								
Aircraft Group	06L	06R	07L	07R	24L	24R	25L	25R
Small Jet	0.03	0.37	0.02	0.02	0.63	76.05	59.25	0.81
Small Narrow-Body Jet	1.00	6.54	0.01	0.00	1.45	163.74	159.70	2.15
Large Narrow-Body Jet	0.87	5.86	0.00	0.01	0.64	51.60	102.16	1.47
Small Wide-Body Jet	0.79	4.38	0.24	0.08	0.10	7.44	15.91	1.14
Large Wide-Body Jet	0.93	7.22	0.05	0.31	0.69	51.37	57.54	1.74
Non-Jet	0.01	0.03	0.00	0.01	0.02	2.38	3.44	0.13
Military*	0.00	0.00	0.00	0.00	0.00	0.00	0.00	0.00

Departures (Average Daily Operations)								
Aircraft Group	06L	06R	07L	07R	24L	24R	25L	25R
Small Jet	0.00	0.00	0.00	0.00	49.68	0.41	12.32	74.66
Small Narrow-Body Jet	0.00	0.00	0.00	0.00	173.78	1.32	4.40	155.46
Large Narrow-Body Jet	0.00	0.00	0.00	0.00	46.21	0.35	2.68	113.59
Small Wide-Body Jet	0.00	0.00	0.00	0.00	10.90	0.11	4.42	14.69
Large Wide-Body Jet	0.00	0.00	0.01	0.00	37.70	0.09	15.13	67.22
Non-Jet	0.00	0.00	0.00	0.00	0.51	0.00	0.65	4.80
Military*	0.00	0.00	0.00	0.00	0.02	0.00	0.00	0.00

LAX Noise Management

Source: LAX ANOMS, based on available FAA radar flight track data.

* Aircraft Type for certain military operations may not be available through our data source, therefore will not be included in the report.

**LAX Average Daily Runway Use By Aircraft Group - Night Time (10pm - 7am)
Second Quarter 2023**

Arrivals (Average Daily Operations)								
Aircraft Group	06L	06R	07L	07R	24L	24R	25L	25R
Small Jet	0.03	0.37	0.02	0.02	0.00	2.36	2.71	0.07
Small Narrow-Body Jet	1.00	6.54	0.01	0.00	0.27	24.73	29.25	0.53
Large Narrow-Body Jet	0.87	5.86	0.00	0.01	0.31	12.43	17.67	0.38
Small Wide-Body Jet	0.79	4.38	0.24	0.08	0.09	1.32	4.97	1.09
Large Wide-Body Jet	0.93	7.22	0.05	0.31	0.23	3.13	8.10	1.34
Non-Jet	0.01	0.03	0.00	0.01	0.00	0.81	0.25	0.00
Military*	0.00	0.00	0.00	0.00	0.00	0.00	0.00	0.00

Departures (Average Daily Operations)								
Aircraft Group	06L	06R	07L	07R	24L	24R	25L	25R
Small Jet	0.00	0.00	0.00	0.00	1.29	0.00	0.12	6.65
Small Narrow-Body Jet	0.00	0.00	0.00	0.00	20.36	0.45	2.01	42.53
Large Narrow-Body Jet	0.00	0.00	0.00	0.00	9.35	0.10	1.45	33.90
Small Wide-Body Jet	0.00	0.00	0.00	0.00	2.21	0.02	0.87	10.18
Large Wide-Body Jet	0.00	0.00	0.00	0.00	4.45	0.00	4.47	26.12
Non-Jet	0.00	0.00	0.00	0.00	0.13	0.00	0.01	1.12
Military*	0.00	0.00	0.00	0.00	0.00	0.00	0.00	0.00

LAX Noise Management

Source: LAX ANOMS, based on available FAA radar flight track data.

* Aircraft Type for certain military operations may not be available through our data source, therefore will not be included in the report.

Summary of Actions Taken by LAWA to Comply with Conditions to the Current Noise Variance for Los Angeles International Airport


Second Quarter 2023

The Los Angeles World Airports (LAWA) continuously works to operate an airport that maintains the highest possible environmental quality of life for surrounding communities. To that end, LAWA continues to take the following actions:

- LAWA continues to implement its Aircraft Noise Mitigation Program (ANMP), designed to fund the mitigation of all incompatible land uses within the noise impact boundary as defined in the State Noise Standards. LAWA updates the ANMP report periodically to ensure that it reasonably represents the mitigation and funding programs that are in place.
- With each second quarter Quarterly Report, LAWA submits an annual update of the ANMP. This update includes the number of dwellings acoustically insulated, the cost of the program, the anticipated funding availability, and the anticipated completion date of the project.
- LAWA continues to monitor and enforce, as appropriate, all of its informal noise abatement procedures in place at LAX, including but not limited to the early turn program, preferential runway use procedures and over ocean operations procedures, as well as the formal maintenance run-up restrictions.
- LAWA continues to work with the Federal Aviation Administration and pilots to improve compliance with its “no turns before the shoreline” policy.
- LAWA updated the 2014 Report on Implementation of the Preferential Runway Use Policy at LAX to reevaluate conditions related to compliance, implementation, and possible improvements, and submitted it to Caltrans and Los Angeles County on June 29, 2023.
- LAWA continues to provide the information to the County of Los Angeles needed to prepare Quarterly Reports of Noise Monitoring. Included with the noise monitoring information forwarded each quarter is this brief report regarding the implementation of each of the conditions to the Variance.

- LAWA completed an upgrade of the Noise and Operations Monitoring System for LAX in 2022. LAWA received Caltrans certification of the upgraded airport noise and operations monitoring system in October 2022 and provided the County of Los Angeles with a copy of all submitted documentation and Caltrans certification at that time. The County continues to review and audit the data LAWA submits in each Quarterly Report.
- LAWA continues to include tabular data and graphical illustrations with each Quarterly Report describing and comparing the level and type of usage for each runway at LAX during the quarter. In addition, LAWA is including tabular data describing the daily average number of arrivals and departures by aircraft type and model on each runway during all hours and during nighttime hours from 10 pm to 7 am. LAWA is also now providing the runway usage data to the FAA for their use in monitoring air traffic runway usage.
- LAWA continues to monitor and enforce its maintenance run-up curfew (2300-0600). When applicable, LAWA will include with each Quarterly Report, information regarding monitoring and enforcement activities undertaken during the quarter. There were no enforcement actions reported during the second quarter 2023.
- LAWA continues to provide the LAX Noise Comment Phone Line with an option for callers to have a live answer as available, and continues to retrieve any complaint messages and provide appropriate responses in a timely manner.

ANMP - Table 1
LAX ANMP Summary

Residential Mitigation		Single Family	Multi-Family	
Number of Incompatible Dwelling Units:		1,920	4,359	
Residential Incompatible Area:		268 acres	216 acres	
Sound Insulation (SI)	Dwellings Proposed for Sound Insulation:	1,692	3,297	Non-Residential Incompatible Area
	Percentage Proposed for Sound Insulation:	88.1%	75.6%	
	Estimated Participating Dwellings (80.0%):	1,354	2,638	Schools: 8 acres
	Estimated Unit Insulation Cost (Average):	\$52,300	\$44,430	Hospitals: 1 acres
	---all dwelling types:		\$47,099	Churches: 23 acres
	Estimated Total Sound Insulation Cost:	\$71 million	\$117 million	
	---all dwelling types:		\$188 million	(Not currently proposed for mitigation)
	Average Annual Units to be Insulated:		510	Estimated Annual Budget
	Estimated Time Until Completion:		8 years	
Land Recycling	Dwellings Proposed for Recycling:	193	1,031	LAWA: \$ 2 million
	Percentage Proposed for Recycling:	10.1%	23.7%	FAA : \$16 million
	Estimated Unit Recycling Cost:	\$510,000	\$154,365	Other: \$ 6 million
	---all dwelling types:		\$210,441	Total: \$24 million
	Estimated Total Recycling Cost:	\$98 million	\$159 million	Remaining Cost and Time
	---all dwelling types:		\$258 million	
	Average Annual Units to be Recycled:		\$ 0 *	Total Cost: \$446 million
	Estimated Time Until Completion:		Undetermined *	Time: 8 years (SI only)
Progress To Date		Funding Provided To Date		LAWA: 1 billion
Total Dwelling Units Mitigated: 24,844				FAA: 496 million

Note: Summary table reflects ANMP progress through December 2022. Estimates for future mitigation of incompatible land use are based on parcels within the Noise Exposure Map (2020 NEM) 65 dB CNEL contour and on past program performance.

*City of Inglewood currently does not have an active property acquisition program at this time.

ANMP - Table 2

Dwelling Units Made Compatible Within the ANMP Contours
Through Sound Insulation

Land Use	City of Los Angeles	County of Los Angeles	City of Inglewood	City of El Segundo	Total Units
Single Family	2,244	870	2,266	831	6,211
Two Family	446	1,070	702	143	2,361
Multi-Family	4,551	2,340	5,008	932	12,831
Other	0	0	1	0	1
Total	7,241	4,280	7,977	1,906	21,404

ANMP - Table 3

Dwelling Units Made Compatible Within the ANMP Contours
Through Land Recycling

Land Use	City of Los Angeles	County of Los Angeles	City of Inglewood	City of EI Segundo	Total Units
Single Family	284	0	26	0	310
Two Family	141	0	15	0	156
Multi-Family	2,199	0	724	0	2,923
Mobile Home	0	0	10	0	10
Other	0	0	41	0	41
Total	2,624	0	816	0	3,440

ANMP - Table 5

Counts of Compatible and Incompatible Land Use Units and
Acreage Within the ANMP Contours (2020 NEM)
(All Jurisdictions)

LANDUSE	CNEL Zone						Total	
	65 - 70		70 - 75		75 +			
	Units	Acres	Units	Acres	Units	Acres	Units	Acres
<u>Incompatible Residential</u>								
Single Family	1,507	223.0	403	59.6	9	2.2	1,919	284.8
Two Family*	829	64.1	313	24.6	14	1.4	1,156	90.1
Multi-Family	2,403	93.9	762	28.7	38	3.6	3,203	126.2
Mobile Homes	1	1.0	0	0.0	0	0.0	1	1.0
<u>Other Incompatible</u>								
Schools	1	5.3	0	3.0	0	0.0	1	8.3
Hospitals	1	0.7	0	0.0	0	0.0	1	0.7
Churches	20	19.8	0	2.9	0	0.0	20	22.7
<u>Compatible Residential</u>								
Title 21 Compliance**	10,071	621.8	2,137	130.9	3	0.4	12,211	753.1
Easement***	3,029	259.1	1,364	89.9	92	7.3	4,485	356.3
Title 24 Compliance	618	13.5	0	0.0	0	0.0	618	13.5
<u>Other Compatible</u>								
Title 21 (Schools,Hospitals,Churches)	0	0.0	0	0.0	0	0.0	0	0.0
Easement (Schools,Hospitals,Churches)	0	14.1	0	6.7	0	0.0	0	20.8
Commercial,Industrial,etc (Hotels, Motels, Mixed use, etc)	3,136	2,070.4	1,787	764.3	8	3,073.8	4,931	5,908.5
Total Incompatible Residential	4,740	382.0	1,478	112.9	61	7.2	6,279	502.1
Total Other Incompatible	22	25.8	0	5.9	0	0.0	22	31.7
<u>Total Incompatible</u>	4,762	407.8	1,478	118.8	61	7.2	6,301	533.8
Total Residential Compatible	13,718	894.4	3,501	220.8	95	7.7	17,314	1,122.9
Total Other Compatible	3,136	2,084.5	1,787	771.0	8	3,073.8	4,931	5,929.3
<u>Total Compatible</u>	16,854	2,978.9	5,288	991.8	103	3,081.5	22,245	7,052.2
Grand Total:	21,616	3,386.7	6,766	1,110.6	164	3,088.7	28,546	7,586.0

* Considered separately from Multi-Family for purposes of cost estimation.

** Easement not obtained.

*** May or may not be sound insulated.

ANMP - Table 5A

Counts of Compatible and Incompatible Land Use Units and
Acreage Within the ANMP Contours (2020 NEM)
(City of Los Angeles Only)

LANDUSE	CNEL Zone						Total	
	65 - 70		70 - 75		75 +			
	Units	Acres	Units	Acres	Units	Acres	Units	Acres
<u>Incompatible Residential</u>								
Single Family	0	0.0	0	0.0	0	0.0	0	0.0
Two Family*	0	0.0	0	0.0	0	0.0	0	0.0
Multi-Family	0	0.0	0	0.0	0	0.0	0	0.0
Mobile Homes	0	0.0	0	0.0	0	0.0	0	0.0
<u>Other Incompatible</u>								
Schools	0	0.0	0	0.0	0	0.0	0	0.0
Hospitals	0	0.0	0	0.0	0	0.0	0	0.0
Churches	3	3.4	0	0.0	0	0.0	3	3.4
<u>Compatible Residential</u>								
Title 21 Compliance**	1,804	67.3	343	7.5	0	0.0	2,147	74.8
Easement***	2,282	199.5	263	12.5	56	2.5	2,601	214.5
Title 24 Compliance	450	4.6	0	0.0	0	0.0	450	4.6
<u>Other Compatible</u>								
Title 21 (Schools,Hospitals,Churches)	0	0.0	0	0.0	0	0.0	0	0.0
Easement (Schools,Hospitals,Churches)	0	14.1	0	0.0	0	0.0	0	14.1
Commercial,Industrial,etc (Hotels, Motels, Mixed use, etc)	2,105	520.0	1,680	581.2	8	3,068.9	3,793	4,170.1
Total Incompatible Residential	0	0.0	0	0.0	0	0.0	0	0.0
Total Other Incompatible	3	3.4	0	0.0	0	0.0	3	3.4
<u>Total Incompatible</u>	3	3.4	0	0.0	0	0.0	3	3.4
Total Residential Compatible	4,536	271.4	606	20.0	56	2.5	5,198	293.9
Total Other Compatible	2,105	534.1	1,680	581.2	8	3,068.9	3,793	4,184.2
<u>Total Compatible</u>	6,641	805.5	2,286	601.2	64	3,071.4	8,991	4,478.1
Grand Total:	6,644	808.9	2,286	601.2	64	3,071.4	8,994	4,481.5

*Considered separately from Multi-Family for purposes of cost estimation.

**Easement not obtained.

***May or may not be sound insulated.

ANMP - Table 5B

Counts of Compatible and Incompatible Land Use Units and
Acreage Within the ANMP Contours (2020 NEM)
(LA County)

LANDUSE	CNEL Zone						Total	
	65 - 70		70 - 75		75 +			
	Units	Acres	Units	Acres	Units	Acres	Units	Acres
<u>Incompatible Residential</u>								
Single Family	266	36.6	214	30.9	9	2.2	489	69.7
Two Family*	255	19.0	217	16.5	14	1.4	486	36.9
Multi-Family	362	16.1	147	8.9	38	3.6	547	28.6
Mobile Homes	0	0.0	0	0.0	0	0.0	0	0.0
<u>Other Incompatible</u>								
Schools	0	2.2	0	3.0	0	0.0	0	5.2
Hospitals	0	0.0	0	0.0	0	0.0	0	0.0
Churches	4	2.3	0	0.3	0	0.0	4	2.6
<u>Compatible Residential</u>								
Title 21 Compliance**	1,895	125.4	699	49.5	3	0.4	2,597	175.3
Easement***	305	19.6	360	28.9	36	4.7	701	53.2
Title 24 Compliance	0	0.0	0	0.0	0	0.0	0	0.0
<u>Other Compatible</u>								
Title 21 (Schools,Hospitals,Churches)	0	0.0	0	0.0	0	0.0	0	0.0
Easement (Schools,Hospitals,Churches)	0	0.0	0	6.7	0	0.0	0	6.7
Commercial,Industrial,etc (Hotels, Motels, Mixed use, etc)	192	65.1	9	37.9	0	4.9	201	107.9
Total Incompatible Residential	883	71.7	578	56.3	61	7.2	1,522	135.2
Total Other Incompatible	4	4.5	0	3.3	0	0.0	4	7.8
<u>Total Incompatible</u>	887	76.2	578	59.6	61	7.2	1,526	143.0
Total Residential Compatible	2,200	145.0	1,059	78.4	39	5.1	3,298	228.5
Total Other Compatible	192	65.1	9	44.6	0	4.9	201	114.6
<u>Total Compatible</u>	2,392	210.1	1,068	123.0	39	10.0	3,499	343.1
Grand Total:	3,279	286.3	1,646	182.6	100	17.2	5,025	486.1

* Considered separately from Multi-Family for purposes of cost estimation.

** Easement not obtained.

*** May or may not be sound insulated.

ANMP - Table 5C

Counts of Compatible and Incompatible Land Use Units and
Acreage Within the ANMP Contours (2020 NEM)
(City of El Segundo Only)

LANDUSE	CNEL Zone						Total	
	65 - 70		70 - 75		75 +			
	Units	Acres	Units	Acres	Units	Acres	Units	Acres
<u>Incompatible Residential</u>								
Single Family	622	97.0	116	18.5	0	0.0	738	115.5
Two Family*	112	8.4	28	2.4	0	0.0	140	10.8
Multi-Family	267	8.6	268	6.9	0	0.0	535	15.5
Mobile Homes	1	0.4	0	0.0	0	0.0	1	0.4
<u>Other Incompatible</u>								
Schools	0	0.0	0	0.0	0	0.0	0	0.0
Hospitals	0	0.0	0	0.0	0	0.0	0	0.0
Churches	0	1.3	0	0.5	0	0.0	0	1.8
<u>Compatible Residential</u>								
Title 21 Compliance**	638	73.7	482	30.5	0	0.0	1,120	104.2
Easement***	10	1.1	545	30.8	0	0.0	555	31.9
Title 24 Compliance	0	0.0	0	0.0	0	0.0	0	0.0
<u>Other Compatible</u>								
Title 21 (Schools,Hospitals,Churches)	0	0.0	0	0.0	0	0.0	0	0.0
Easement (Schools,Hospitals,Churches)	0	0.0	0	0.0	0	0.0	0	0.0
Commercial,Industrial,etc (Hotels, Motels, Mixed use, etc)	350	206.2	7	41.7	0	0.0	357	247.9
Total Incompatible Residential	1,002	114.4	412	27.8	0	0.0	1,414	142.2
Total Other Incompatible	0	1.3	0	0.5	0	0.0	0	1.8
<u>Total Incompatible</u>	1,002	115.7	412	28.3	0	0.0	1,414	144.0
Total Residential Compatible	648	74.8	1,027	61.3	0	0.0	1,675	136.1
Total Other Compatible	350	206.2	7	41.7	0	0.0	357	247.9
<u>Total Compatible</u>	998	281.0	1,034	103.0	0	0.0	2,032	384.0
Grand Total:	2,000	396.7	1,446	131.3	0	0.0	3,446	528.0

* Considered separately from Multi-Family for purposes of cost estimation.

** Easement not obtained.

*** May or may not be sound insulated.

ANMP - Table 5D

Counts of Compatible and Incompatible Land Use Units and
Acreage Within the ANMP Contours (2020 NEM)
(City of Inglewood Only)

LANDUSE	CNEL Zone						Total	
	65 - 70		70 - 75		75 +			
	Units	Acres	Units	Acres	Units	Acres	Units	Acres
<u>Incompatible Residential</u>								
Single Family	619	89.3	73	10.1	0	0.0	692	99.4
Two Family*	462	36.7	68	5.6	0	0.0	530	42.3
Multi-Family	1,774	69.2	347	12.9	0	0.0	2,121	82.1
Mobile Homes	0	0.6	0	0.0	0	0.0	0	0.6
<u>Other Incompatible</u>								
Schools	1	3.2	0	0.0	0	0.0	1	3.2
Hospitals	1	0.7	0	0.0	0	0.0	1	0.7
Churches	13	12.8	0	2.1	0	0.0	13	14.9
<u>Compatible Residential</u>								
Title 21 Compliance**	5,734	355.3	613	43.3	0	0.0	6,347	398.6
Easement***	432	38.8	196	17.7	0	0.0	628	56.5
Title 24 Compliance	168	8.8	0	0.0	0	0.0	168	8.8
<u>Other Compatible</u>								
Title 21 (Schools,Hospitals,Churches)	0	0.0	0	0.0	0	0.0	0	0.0
Easement (Schools,Hospitals,Churches)	0	0.0	0	0.0	0	0.0	0	0.0
Commercial,Industrial,etc (Hotels, Motels, Mixed use, etc)	489	1,279.1	91	103.6	0	0.0	580	1,382.7
Total Incompatible Residential	2,855	195.8	488	28.6	0	0.0	3,343	224.4
Total Other Incompatible	15	16.7	0	2.1	0	0.0	15	18.8
<u>Total Incompatible</u>	2,870	212.5	488	30.7	0	0.0	3,358	243.2
Total Residential Compatible	6,334	402.9	809	61.0	0	0.0	7,143	463.9
Total Other Compatible	489	1,279.1	91	103.6	0	0.0	580	1,382.7
<u>Total Compatible</u>	6,823	1,682.0	900	164.6	0	0.0	7,723	1,846.6
Grand Total:	9,693	1,894.5	1,388	195.3	0	0.0	11,081	2,089.8

*Considered separately from Multi-Family for purposes of cost estimation.

**Easement not obtained.

***May or may not be sound insulated.