

California State Airport Noise Standards Quarterly Report

First Quarter 2024



LOS ANGELES INTERNATIONAL AIRPORT

Los Angeles World Airports

May 14, 2024

TABLE OF CONTENTS

California State Airport Noise Standards Quarterly Report

1. Division of Aeronautics Form 617
2. Incompatible Land Use Data
3. Daily Aircraft CNEL Data
4. Runway Utilization Report
 - Summary of Runway Use
 - Summary of Runway Flow
5. Average Daily Runway Use by Aircraft Type
 - 24 Hour Average
 - Night-time Average (10pm – 7am)
6. Average Daily Runway Use by Aircraft Group
 - 24 Hour Average
 - Night-time Average (10pm – 7am)
7. Summary of Actions

Attachment

Noise contour map

**SUMMARY OF STATISTICAL INFORMATION
FOR
CALIFORNIA DEPARTMENT OF TRANSPORTATION**

Los Angeles International Airport
First Quarter 2024

1. Size of Noise Impact Area as defined in the Noise Standards (California Code of Regulations, Title 21, Chapter 2.5, Subchapter 6):

368.9 Acres

2. Estimated number of dwelling units included in the Noise Impact Area as defined in the Noise Standards:

4,626

3. Estimated number of people residing within the Noise Impact Area as defined in the Noise Standards:

15,263

4. Identification of aircraft type having highest takeoff noise level operating at this airport together with estimated number of operations by this aircraft type during the calendar quarter reporting period:

B747: 2,292

5. Total number of aircraft operations during the calendar quarter*:

136,874

6. Number of Air Carrier operations during the calendar quarter: (Not Mandatory)*

128,238

7. Percentage of Air Carrier operations by aircraft certificated under Federal Aviation Regulation (FAR) Part 36, Stage III. (Not Mandatory)

100 %

8. Estimated number of operations by General Aviation aircraft during the calendar quarter: (Not Mandatory)*

3,128

9. Estimated number of operations by Military aircraft during the calendar quarter: (Not Mandatory)*

121

LOS ANGELES INTERNATIONAL AIRPORT

Incompatible Land Use

Annual Noise Impact Accumulated by Noise Zone: CNEL 65, 70, and 75 +

1Q24	Total Cumulative Noise Impact Areas - All Jurisdictions											
	<i>CNEL 65 dB and Above</i>				<i>CNEL 70 dB and Above</i>				<i>CNEL 75 dB and Above</i>			
Land Use	Acres	Dwelling Units	Parcels	Population	Acres	Dwelling Units	Parcels	Population	Acres	Dwelling Units	Parcels	Population
Single Family	176.3	1,214	1,243	4,120	33.3	221	224	831	0.5	1	1	4
Multi-Family	166.7	3,395	1,022	11,106	35.4	633	236	2,177	0.4	2	1	8
Mobile Home	0.6	0	2	0	0.0	0	0	0	0.0	0	0	0
Schools	6.6	0	26	0	3.0	0	17	0	0.0	0	0	0
Churches	18.1	17	36	37	2.4	0	2	0	0.0	0	0	0
Hospitals	0.6	0	2	0	0.0	0	0	0	0.0	0	0	0
Total Incompatible	368.9	4,626	2,331	15,263	74.1	854	479	3,008	0.9	3	2	11

Note: Parcels and dwelling units may not match for single family land uses due to subdivision.
Parcels for multifamily land uses reflect only the common area parcel, except for condominiums.

LOS ANGELES INTERNATIONAL AIRPORT

Incompatible Land Use

Annual Noise Impact Accumulated by Noise Zone: CNEL 65, 70, and 75 +

1Q24	Total Cumulative Noise Impact Areas - Athens											
	<i>CNEL 65 dB and Above</i>				<i>CNEL 70 dB and Above</i>				<i>CNEL 75 dB and Above</i>			
	Land Use	Acres	Dwelling Units	Parcels	Population	Acres	Dwelling Units	Parcels	Population	Acres	Dwelling Units	Parcels
Single Family	16.5	127	140	426	0.0	0	0	0	0.0	0	0	0
Multi-Family	16.0	286	113	903	0.0	0	0	0	0.0	0	0	0
Mobile Home	0.0	0	0	0	0.0	0	0	0	0.0	0	0	0
Schools	0.0	0	0	0	0.0	0	0	0	0.0	0	0	0
Churches	1.3	3	6	6	0.0	0	0	0	0.0	0	0	0
Hospitals	0.0	0	0	0	0.0	0	0	0	0.0	0	0	0
Total Incompatible	33.8	416	259	1,335	0.0	0	0	0	0.0	0	0	0

Note: Parcels and dwelling units may not match for single family land uses due to subdivision.
Parcels for multifamily land uses reflect only the common area parcel, except for condominiums.

Report Date: May, 14 2024

LOS ANGELES INTERNATIONAL AIRPORT

Incompatible Land Use

Annual Noise Impact Accumulated by Noise Zone: CNEL 65, 70, and 75 +

1Q24	Total Cumulative Noise Impact Areas - Del Aire											
	CNEL 65 dB and Above				CNEL 70 dB and Above				CNEL 75 dB and Above			
	Land Use	Acres	Dwelling Units	Parcels	Population	Acres	Dwelling Units	Parcels	Population	Acres	Dwelling Units	Parcels
Single Family	0.0	0	0	0	0.0	0	0	0	0.0	0	0	0
Multi-Family	0.0	0	0	0	0.0	0	0	0	0.0	0	0	0
Mobile Home	0.0	0	0	0	0.0	0	0	0	0.0	0	0	0
Schools	0.0	0	0	0	0.0	0	0	0	0.0	0	0	0
Churches	0.0	0	0	0	0.0	0	0	0	0.0	0	0	0
Hospitals	0.0	0	0	0	0.0	0	0	0	0.0	0	0	0
Total Incompatible	0.0	0	0	0	0.0	0	0	0	0.0	0	0	0

Note: Parcels and dwelling units may not match for single family land uses due to subdivision.
 Parcels for multifamily land uses reflect only the common area parcel, except for condominiums.

Report Date: May, 14 2024

LOS ANGELES INTERNATIONAL AIRPORT

Incompatible Land Use

Annual Noise Impact Accumulated by Noise Zone: CNEL 65, 70, and 75 +

1Q24	Total Cumulative Noise Impact Areas - City of El Segundo											
	<i>CNEL 65 dB and Above</i>				<i>CNEL 70 dB and Above</i>				<i>CNEL 75 dB and Above</i>			
	Land Use	Acres	Dwelling Units	Parcels	Population	Acres	Dwelling Units	Parcels	Population	Acres	Dwelling Units	Parcels
Single Family	44.0	287	288	754	1.6	10	10	20	0.0	0	0	0
Multi-Family	12.7	374	143	796	4.2	165	70	339	0.0	0	0	0
Mobile Home	0.0	0	0	0	0.0	0	0	0	0.0	0	0	0
Schools	0.0	0	0	0	0.0	0	0	0	0.0	0	0	0
Churches	0.7	0	2	0	0.0	0	0	0	0.0	0	0	0
Hospitals	0.0	0	0	0	0.0	0	0	0	0.0	0	0	0
Total Incompatible	57.4	661	433	1,549	5.8	175	80	359	0.0	0	0	0

Note: Parcels and dwelling units may not match for single family land uses due to subdivision.
Parcels for multifamily land uses reflect only the common area parcel, except for condominiums.

Report Date: May, 14 2024

LOS ANGELES INTERNATIONAL AIRPORT

Incompatible Land Use

Annual Noise Impact Accumulated by Noise Zone: CNEL 65, 70, and 75 +

1Q24	Total Cumulative Noise Impact Areas - City of Inglewood											
	<i>CNEL 65 dB and Above</i>				<i>CNEL 70 dB and Above</i>				<i>CNEL 75 dB and Above</i>			
	Land Use	Acres	Dwelling Units	Parcels	Population	Acres	Dwelling Units	Parcels	Population	Acres	Dwelling Units	Parcels
Single Family	63.5	439	449	1,550	1.2	9	9	36	0.0	0	0	0
Multi-Family	88.5	1,977	486	6,591	2.6	82	13	363	0.0	0	0	0
Mobile Home	0.6	0	2	0	0.0	0	0	0	0.0	0	0	0
Schools	1.4	0	1	0	0.0	0	0	0	0.0	0	0	0
Churches	10.9	11	18	22	2.1	0	1	0	0.0	0	0	0
Hospitals	0.6	0	2	0	0.0	0	0	0	0.0	0	0	0
Total Incompatible	165.5	2,427	958	8,163	5.9	91	23	399	0.0	0	0	0

Note: Parcels and dwelling units may not match for single family land uses due to subdivision.
Parcels for multifamily land uses reflect only the common area parcel, except for condominiums.

Report Date: May, 14 2024

LOS ANGELES INTERNATIONAL AIRPORT

Incompatible Land Use

Annual Noise Impact Accumulated by Noise Zone: CNEL 65, 70, and 75 +

1Q24	Total Cumulative Noise Impact Areas - Lennox											
	CNEL 65 dB and Above				CNEL 70 dB and Above				CNEL 75 dB and Above			
	Land Use	Acres	Dwelling Units	Parcels	Population	Acres	Dwelling Units	Parcels	Population	Acres	Dwelling Units	Parcels
Single Family	52.2	360	365	1,387	30.5	202	205	775	0.5	1	1	4
Multi-Family	49.4	758	280	2,817	28.6	386	153	1,475	0.4	2	1	8
Mobile Home	0.0	0	0	0	0.0	0	0	0	0.0	0	0	0
Schools	5.2	0	25	0	3.0	0	17	0	0.0	0	0	0
Churches	1.6	1	3	4	0.3	0	1	0	0.0	0	0	0
Hospitals	0.0	0	0	0	0.0	0	0	0	0.0	0	0	0
Total Incompatible	108.4	1,119	673	4,208	62.4	588	376	2,250	0.9	3	2	11

Note: Parcels and dwelling units may not match for single family land uses due to subdivision.
 Parcels for multifamily land uses reflect only the common area parcel, except for condominiums.

Report Date: May, 14 2024

LOS ANGELES INTERNATIONAL AIRPORT

Incompatible Land Use

Annual Noise Impact Accumulated by Noise Zone: CNEL 65, 70, and 75 +

1Q24	Total Cumulative Noise Impact Areas - South and South East LA											
	CNEL 65 dB and Above				CNEL 70 dB and Above				CNEL 75 dB and Above			
	Land Use	Acres	Dwelling Units	Parcels	Population	Acres	Dwelling Units	Parcels	Population	Acres	Dwelling Units	Parcels
Single Family	0.1	1	1	3	0.0	0	0	0	0.0	0	0	0
Multi-Family	0.0	0	0	0	0.0	0	0	0	0.0	0	0	0
Mobile Home	0.0	0	0	0	0.0	0	0	0	0.0	0	0	0
Schools	0.0	0	0	0	0.0	0	0	0	0.0	0	0	0
Churches	2.4	1	6	4	0.0	0	0	0	0.0	0	0	0
Hospitals	0.0	0	0	0	0.0	0	0	0	0.0	0	0	0
Total Incompatible	2.5	2	7	7	0.0	0	0	0	0.0	0	0	0

Note: Parcels and dwelling units may not match for single family land uses due to subdivision.
 Parcels for multifamily land uses reflect only the common area parcel, except for condominiums.

Report Date: May, 14 2024

LOS ANGELES INTERNATIONAL AIRPORT

Incompatible Land Use

Annual Noise Impact Accumulated by Noise Zone: CNEL 65, 70, and 75 +

1Q24	Total Cumulative Noise Impact Areas - Westchester/Playa Del Rey											
	<i>CNEL 65 dB and Above</i>				<i>CNEL 70 dB and Above</i>				<i>CNEL 75 dB and Above</i>			
	Land Use	Acres	Dwelling Units	Parcels	Population	Acres	Dwelling Units	Parcels	Population	Acres	Dwelling Units	Parcels
Single Family	0.0	0	0	0	0.0	0	0	0	0.0	0	0	0
Multi-Family	0.0	0	0	0	0.0	0	0	0	0.0	0	0	0
Mobile Home	0.0	0	0	0	0.0	0	0	0	0.0	0	0	0
Schools	0.0	0	0	0	0.0	0	0	0	0.0	0	0	0
Churches	1.3	1	1	1	0.0	0	0	0	0.0	0	0	0
Hospitals	0.0	0	0	0	0.0	0	0	0	0.0	0	0	0
Total Incompatible	1.3	1	1	1	0.0	0	0	0	0.0	0	0	0

Note: Parcels and dwelling units may not match for single family land uses due to subdivision.
Parcels for multifamily land uses reflect only the common area parcel, except for condominiums.

Report Date: May, 14 2024



January	PDR1	PDR2	ESG1	ESG2	ESG3	ESG5	DEL1*	WCH2	WCH3	WCH5	WCH6	ING1	ING2	ING3	ING6	ING8	LNX1	LNX2	LNX3	LNX4	ATH2	SLA1	SLA3	SLA5	SLA7
1 Mon	66	63	63	67	62	63	54	60	60	64	56	61	61	66	67	62	72	59	61	63	64	63	60	63	63
2 Tue	67	62	64	67	63	63	58	60	63	64	59	62	61	66	70	62	76	63	63	66	68	63	64	66	66
3 Wed	67	61	65	68	63	62	62	58	60	66	58	63	62	68	71	63	77	64	65	68	68			66	66
4 Thu	65	60	65	69	64	63	62	56	52	63	57	61	60	66	70	62	75	62	62	66	67			66	65
5 Fri	66	60	64	68	65	65	58	60	60	64	59	61	60	66	69	61	74	60	61	65	66	62	62	64	63
6 Sat	67	59	65	68	64	64	56	61	61	65	57	62	61	66	69	61	74	62	63	65	66		59	63	64
7 Sun	67	60	66	68	64	63	62	52	52	65	56	63	61	67	70	62	76	62	60	66	66			65	64
8 Mon	64	60	63	67	63	62	54	57	60	62	56	59	59	65	70	58	72	60	58	62	64	61	61	62	62
9 Tue	66	59	62	66	61	61	54	62	62	62	57	60	59	64	67	59	73	59	61	64	65	61	61	63	63
10 Wed	67	60	64	68	63	62	56	61	60	64	56	60	60	66	68	60	73	60	59	63	66	63	63	64	64
11 Thu	64	58	64	67	63	61	57	51	55	62	54	62	59	65	69	62	72	63	57	63	64			62	62
12 Fri	67	60	63	67	62	62	55	60	63	63	57	60	60	66	68	62	73	61	62	64	65	61	61	63	63
13 Sat	66	60	63	67	63	62	53	60	60	63	55	60	60	65	69	61	74	61	63	65	67	62	63	65	65
14 Sun	66	60	64	68	62	59	44	63	62	63	55	60	60	65	68	59	73	59	60	63	66	62	61	63	63
15 Mon	67	62	63	67	63	62	48	60	62	64	57	62	60	66	68	60	74	61	61	65	67	62	62	63	64
16 Tue	66	60	63	68	62	60	54	58	60	65	58	62	61	67	70	61	75	62	63	66	67	65	65	66	66
17 Wed	67	62	63	68	60	56	47	58	56	64	56	61	60	66	69	61	76	62	62	66	67	62	63	65	65
18 Thu	67	62	64	68	62	59	54	59	61	64	55	60	60	65	68	60	74	60	60	63	66	62	62	64	63
19 Fri	67	61	63	67	63	61	53	60	61	64	57	61	61	67	70	62	76	66	63	66	67	65	64	66	66
20 Sat	65	59	62	66	59	55	57	60	61	69	67	64	65	65	69	64	74	70	68	69	65	60	66	64	62
21 Sun	66	60	62	66	59	55	58	60	59	67	64	64	63	66	70	63	75	70	68	69	66	62	66	64	64
22 Mon	66	61	62	66	60	58	61	59	62	69	66	66	65	67	71	65	75	71	70	70	66	63	67	65	63
23 Tue	66	60	64	67	62	62	56	59	58	62	57	59	58	64	70	62	75	61	62	66	67	60	63	65	65
24 Wed	66	60	64	67	62	59	50	56	58	63	55	60	59	65	70	62	76	62	63	66	68	62	63	66	66
25 Thu	68	60	64	68	65	62	54	61	61	63	56	61	60	65	71	60	74	63	61	64	65	62	62	64	64
26 Fri	67	61	64	67	64	64	57	62	64	63	56	61	60	66	70	62	76	62	63	66	67	63	63	66	66
27 Sat	65	58	63	67	63	64	57	59	62	61	57	59	57	63	66	57	72	59	61	62	64	59	59	62	59
28 Sun	65	59	62	66	62	63	56	62	61	62	56	59	58	64	66	59	72	59	60	62	64	61	59	62	62
29 Mon	65	60	63	68	66	67	60	60	64	62	57	59	58	64	67	59	73	62	57	63	65	62	60	63	63
30 Tue	66	60	63	67	62	61	53	62	62	61	57	60	59	64	67	58	73	61	62	64	64	60	59	63	63
31 Wed	64	59	63	66	60	57	57	63	61	66	64	63	63	64	67	62	74	69	68	69	64	61	63	62	61



February	PDR1	PDR2	ESG1	ESG2	ESG3	ESG5	DEL1*	WCH2	WCH3	WCH5	WCH6	ING1	ING2	ING3	ING6	ING8	LNX1	LNX2	LNX3	LNX4	ATH2	SLA1	SLA3	SLA5	SLA7
1 Thu	66	61	64	67	62	61	66	59	64	68	65	66	64	66	70	67	75	71	69	69	66	65	64	65	63
2 Fri	68	62	64	67	62	60	57	58	62	64	57	62	60	66	72	64	78	65	65	68	68	62	65	67	67
3 Sat	66	60	63	67	61	59	49	59	60	63	55	60	60	65	67	60	73	62	62	64	65	61	61	60	65
4 Sun	66	61	57	61	56	53	62	66	66	72	71	67	68	65	70	66	74	73	70	70	63	63	66	62	63
5 Mon	66	61	62	65	58	55	60	63	63	71	68	67	67	67	70	65	75	72	70	70	65	64	65	64	63
6 Tue	67	61	64	68	62	58	53	62	59	64	60	61	61	65	69	61	73	61	61	64	65	62	61	63	63
7 Wed	68	61	66	69	64	61	55	62	62	64	57	62	60	66	69	62	75	62	63	65	66	62	62	64	64
8 Thu	67	62	65	68	63	60	55	59	59	66	59	64	63	68	71	63	75	65	62	65	68	64	63	65	66
9 Fri	67	60	64	68	63	61	59	61	58	64	56	61	60	66	68	60	73	63	60	63	65	62	62	63	64
10 Sat	65	58	64	67	62	61	54	58	57	62	54	59	58	64	67	58	72	59	60	62	64	67	60	63	63
11 Sun	65	59	62	66	62	62	54	60	63	62	57	60	60	66	67	59	73	61	60	63	65	62	60	63	63
12 Mon	66	62	63	67	62	61	51	60	60	67	57	60	60	65	67	59	73	62	60	63	65	61	61	64	63
13 Tue	67	60	62	68	63	63	54	60	61	63	57	60	59	64	67	60	73	60	61	63	65	61	61	63	63
14 Wed	67	62	63	67	61	60	48	62	60	64	54	59	59	64	68	60	73	64	60	63	65	61	61	63	64
15 Thu	68	62	63	67	62	62	62	59	61	64	57	61	60	66	70	62	76	62	63	66	67	63	64	66	67
16 Fri	67	61	64	67	61	56	48	57	59	64	57	61	61	66	71	64	76	62	63	66	68	62	63	66	66
17 Sat	66	60	63	67	61	58	53	56	60	64	56	60	60	66	70	62	76	62	64	66	67	62	63	65	65
18 Sun	67	62	63	67	60	57	46	57	57	64	56	61	61	67	69	61	75	63	61	65	69	63	62	65	65
19 Mon	65	60	59	64	57	54	60	63	63	71	69	65	66	64	66	60	73	70	70	70	59	58	63	58	54
20 Tue	62	56	58	63	56	57	62	60	62	71	69	66	67	64	68	65	75	72	72	71	59	59	64	58	53
21 Wed	67	60	64	67	61	58	66	60	61	72	61	62	65	65	69	63	74	67	65	66	65	63	63	64	64
22 Thu	67	62	63	67	62	61	50	62	62	73	62	61	65	66	70	61	75	62	64	65	68	64	63	66	66
23 Fri	67	61	63	67	64	64	58	63	65	73	62	59	64	66	70	61	75	62	64	66	66	63	63	66	66
24 Sat	66	60	63	67	62	61	57	61	62	72	61	58	64	65	69	60	75	62	63	65	--	63	62	64	65
25 Sun	68	63	63	66	60	55	43	61	66	73	63	59	65	66	69	60	75	62	64	66	--	64	63	65	65
26 Mon	68	62	63	67	61	57	49	60	58	72	61	59	65	66	68	59	73	60	59	63	67	64	61	63	64
27 Tue	67	61	63	67	61	58	51	59	60	71	61	57	64	64	68	59	73	59	60	63	66	62	61	64	63
28 Wed	68	63	63	67	61	59	44	62	61	72	61	58	64	65	68	61	73	60	60	63	65	63	61	63	63
29 Thu	68	62	65	67	61	57	49	60	59	72	61	59	65	65	68	61	74	61	61	64	66	64	62	64	64



March	PDR1	PDR2	ESG1	ESG2	ESG3	ESG5	DEL1*	WCH2	WCH3	WCH5	WCH6	ING1	ING2	ING3	ING6	ING8	LNX1	LNX2	LNX3	LNX4	ATH2	SLA1	SLA3	SLA5	SLA7
1 Fri	68	62	64	67	61	54	44	63	62	73	62	59	66	66	69	61	74	61	64	64	66	64	61	64	64
2 Sat	68	62	64	68	62	59	59	60	62	73	63	60	66	66	70	62	76	64	64	66	67	65	63	66	67
3 Sun	69	63	63	67	62	59	50	61	61	73	62	60	65	66	70	62	76	62	63	66	67	65	64	66	66
4 Mon	67	62	63	67	61	59	49	61	61	71	61	58	64	64	68	60	73	64	60	63	66	63	61	64	64
5 Tue	67	61	64	67	62	60	50	61	60	71	60	58	64	64	68	59	73	60	60	63	65	62	61	63	63
6 Wed	66	60	64	68	62	61	59	59	62	70	64	63	63	63	71	64	76	71	69	70	67	61	67	66	66
7 Thu	68	62	65	69	64	63	59	62	61	72	62	63	65	66	71	65	77	68	68	69	68	64	66	67	67
8 Fri	69	62	65	68	64	63	54	63	62	73	62	60	65	66	71	63	77	64	64	67	69	64	64	66	66
9 Sat	67	61	64	68	63	63	56	60	63	72	61	60	65	65	70	61	75	64	63	66	67	63	63	66	66
10 Sun	67	61	63	68	62	60	50	64	58	72	61	58	65	66	68	61	74	61	62	64	65	64	62	64	64
11 Mon	67	62	66	69	63	59	48	63	61	73	62	59	67	66	68	61	74	63	62	65	66	64	62	64	64
12 Tue	68	62	65	69	63	58	49	62	61	72	62	58	65	65	68	60	73	64	61	64	66	63	61	64	64
13 Wed	66	59	65	69	63	61	59	56	57	72	61	58	64	65	68	60	74	62	61	64	66	63	62	64	64
14 Thu	65	58	64	68	63	61	69	59	59	71	62	60	64	64	68	62	73	64	63	65	64	62	63	62	
15 Fri	68	64	67	69	63	57	42	62	62	72	61	59	65	66	70	62	74	62	63	64	69	63	66	64	65
16 Sat	68	63	64	68	61	59	48	62	61	72	61	59	65	66	69	61	74	62	62	64	66	63	63	64	64
17 Sun	68	62	64	68	62	59	47	61	61	73	62	59	65	66	69	63	73	61	61	64	66	64	66	64	64
18 Mon	68	62	66	69	63	60	53	63	62	72	63	60	65	65	68	60	74	61	60	64	65	63	65	64	64
19 Tue	68	62	64	68	62	60	63	62	60	72	61	58	65	65	68	60	74	61	60	64	66	63	64	64	64
20 Wed	67	61	63	68	61	58	50	56	57	75	63	60	67	67	68	61	74	62	60	65	67	65	65	64	65
21 Thu	68	62	64	68	62	57	47	57	56	73	62	59	65	66	68	60	74	60	61	63	66	65	65	63	65
22 Fri	69	63	64	68	62	57	45	61	61	73	62	60	66	66	69	61	74	61	62	64	66	64	65	64	64
23 Sat	70	62	62	69	63	59	63	59	60	71	60	61	63	64	71	63	77	61	64	67	65	62	64	64	64
24 Sun	69	63	63	69	63	62	55	57	58	74	63	60	66	67	70	61	76	62	62	66	67	65	68	65	65
25 Mon	68	63	64	69	63	62	58	60	61	74	63	60	66	67	70	62	75	64	64	66	67	65	67	66	66
26 Tue	68	62	65	69	62	58	51	63	60	72	61	58	65	65	68	60	74	60	61	64	66	63	66	65	65
27 Wed	68	62	65	69	63	58	46	62	60	73	62	59	65	66	69	61	74	61	62	65	66	64	66	64	64
28 Thu	69	63	65	69	63	59	62	58	59	74	63	61	66	67	70	63	76	63	64	66	67	65	65	65	66
29 Fri	68	61	63	67	61	56	57	63	64	72	68	64	65	65	70	65	74	69	68	68	67	63	65	64	64
30 Sat	65	59	59	66	60	57	62	63	65	72	69	67	66	65	72	68	76	74	71	72	67	62	66	64	64
31 Sun	63	57	61	66	61	60	62	59	63	71	69	66	66	65	71	67	75	72	71	71	67	62	67	66	65



Runway Utilization Report
Summary of Runway Use (Average)
 Los Angeles International Airport

Period : 01/01/2024 to 03/31/2024
 Airline : ALL
 Aircraft : ALL

Time Period	Percent Daily Operations Per Runway								Average Operations	Runway Complex		Runway Flow		In Board	Out Board	
	06L	06R	07L	07R	24L	24R	25L	25R		South	North	West	East			
Departures																
Total Hours																
24 Hours	<1%	2%	6%	<1%	21%	7%	5%	58%	748	69%	31%	91%	9%	88%	12%	
CNEL Hours																
0700 - 1900	<1%	3%	5%	<1%	24%	8%	5%	55%	496	65%	35%	91%	9%	87%	13%	
1900 - 2200	1%	2%	6%	<1%	24%	8%	4%	55%	93	64%	36%	91%	9%	87%	13%	
2200 - 0700	<1%	1%	7%	<1%	12%	3%	5%	70%	159	82%	18%	91%	9%	91%	9%	
Contra Hours																
Midnight - 0630	<1%	<1%	8%	<1%	4%	2%	9%	75%	75	93%	7%	90%	10%	88%	12%	
0630 - Midnight	<1%	2%	6%	<1%	23%	7%	4%	56%	673	66%	34%	91%	9%	87%	13%	
Arrivals																
Total Hours																
24 Hours	3%	4%	<1%	5%	19%	17%	51%	<1%	748	57%	43%	88%	12%	24%	76%	
CNEL Hours																
0700 - 1900	1%	2%	<1%	5%	21%	18%	52%	<1%	489	58%	42%	91%	9%	24%	76%	
1900 - 2200	2%	2%	<1%	6%	21%	17%	52%	<1%	134	58%	42%	90%	10%	23%	77%	
2200 - 0700	10%	14%	<1%	6%	11%	11%	47%	<1%	124	55%	45%	70%	30%	26%	74%	
Contra Hours																
Midnight - 0630	23%	32%	2%	6%	3%	3%	30%	2%	49	39%	61%	37%	63%	38%	62%	
0630 - Midnight	1%	2%	<1%	5%	20%	18%	52%	<1%	699	59%	41%	91%	9%	23%	77%	

All values are rounded to the nearest whole number.



Runway Utilization Report
 Summary of Runway Flow (Average)
 Los Angeles International Airport

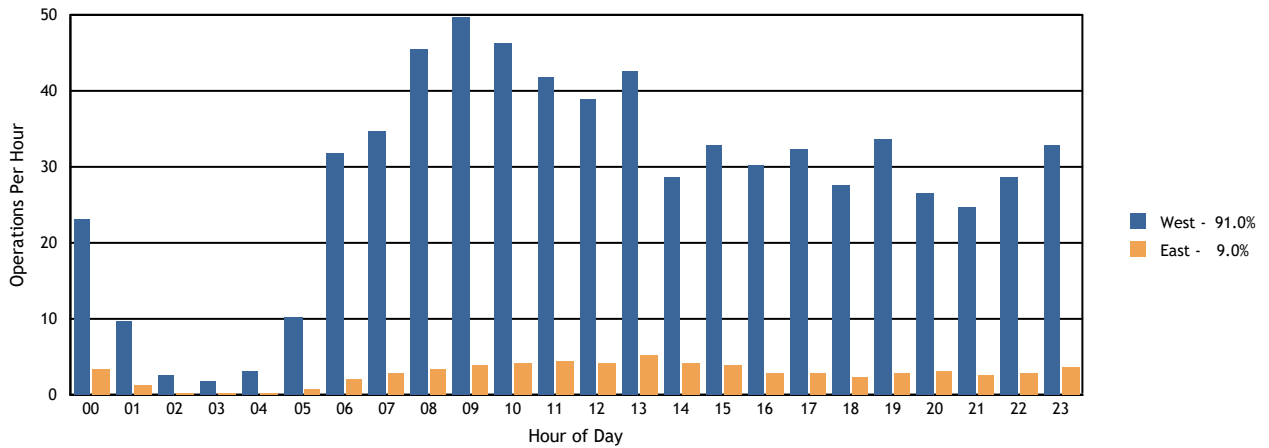
Period: 01/01/2024 to 03/31/2024

Airline : ALL
 Aircraft : ALL

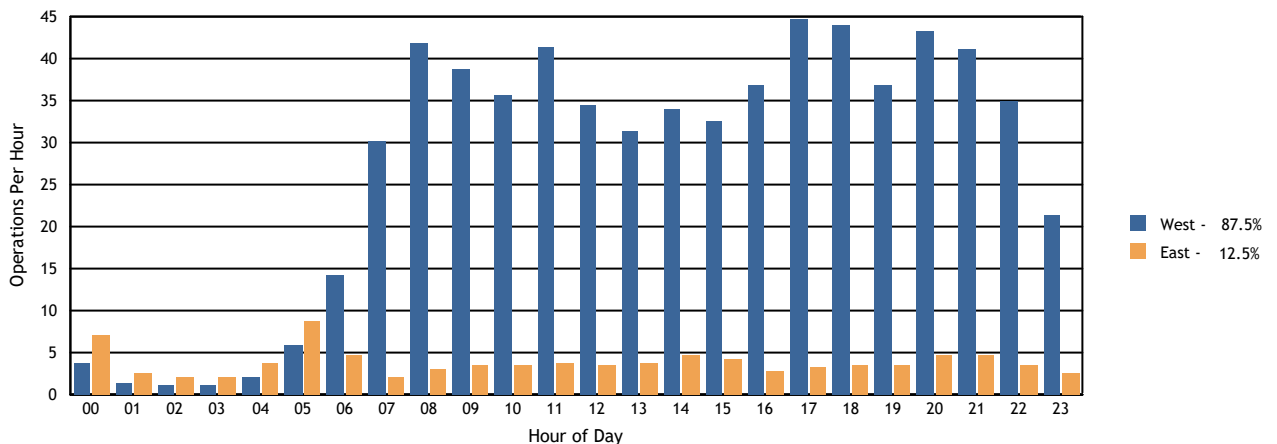
Time Period	Departures			Arrivals			Departures		Arrivals	
	West	East	Average	West	East	Average	West	East	West	East
Total Hours										
24 Hours	681	67	748	654	93	748	91%	9%	88%	12%
CNEL Hours										
0700-1900	452	44	496	447	43	489	91%	9%	91%	9%
1900-2200	85	9	93	121	13	134	91%	9%	90%	10%
2200-0700	144	15	159	86	38	124	91%	9%	70%	30%
Contra Hours										
Midnight - 0630	68	7	75	18	30	49	90%	10%	37%	63%
0630 - Midnight	613	60	673	636	63	699	91%	9%	91%	9%

All percentages are rounded to the nearest whole number.

Departures Per Hour by Operational Direction



Arrivals Per Hour by Operational Direction



LAX Average Daily Runway Use By Aircraft Type - 24 Hours First Quarter 2024

Arrivals (Average Daily Operations)								
Aircraft Type	06L	06R	07L	07R	24L	24R	25L	25R
A19N	0.00	0.00	0.00	0.00	0.00	0.00	0.01	0.00
A20N	0.26	0.57	0.02	1.49	1.22	0.90	15.31	0.13
A21N	1.71	3.19	0.08	3.27	6.47	5.31	28.19	0.30
A306	0.23	0.15	0.00	0.05	0.00	0.00	0.60	0.03
A319	0.48	0.88	0.00	1.05	6.46	5.76	9.73	0.16
A320	0.60	0.79	0.02	2.38	4.05	3.04	22.93	0.26
A321	1.32	1.57	0.08	5.16	8.10	7.65	47.20	0.49
A332	0.33	0.52	0.03	0.44	1.60	1.32	2.68	0.01
A333	0.05	0.08	0.00	0.08	0.51	0.34	1.00	0.01
A342	0.00	0.00	0.00	0.00	0.00	0.00	0.01	0.00
A359	0.79	0.88	0.01	0.44	3.11	2.07	5.04	0.09
A35K	0.07	0.09	0.00	0.07	0.65	0.67	0.59	0.01
A388	0.30	0.69	0.00	0.03	3.04	3.11	0.20	0.00
AC90	0.00	0.00	0.00	0.00	0.00	0.00	0.01	0.00
ASTR	0.00	0.01	0.00	0.01	0.00	0.00	0.09	0.00
B350	0.03	0.08	0.00	0.08	0.65	0.46	0.76	0.00
B38M	0.95	1.19	0.01	1.53	9.92	9.11	13.04	0.22
B39M	0.34	0.54	0.03	1.60	1.77	2.69	14.05	0.19
B733	0.00	0.00	0.00	0.00	0.00	0.01	0.02	0.00
B734	0.01	0.00	0.00	0.02	0.00	0.01	0.04	0.00
B737	0.87	1.14	0.00	1.08	10.09	9.31	9.46	0.18
B738	1.64	2.49	0.04	3.88	16.38	12.52	38.20	0.64
B739	0.84	1.30	0.04	2.88	7.55	7.75	26.96	0.40
B744	0.30	0.78	0.04	0.65	0.05	0.10	5.87	0.02
B748	0.37	0.73	0.00	0.37	0.51	0.37	2.40	0.00
B752	0.40	0.55	0.01	1.03	2.33	2.14	10.19	0.16
B753	0.07	0.09	0.00	0.34	0.69	0.51	3.23	0.03
B762	0.00	0.07	0.00	0.04	0.00	0.00	0.24	0.00
B763	2.54	2.77	0.33	1.69	2.53	2.29	16.11	0.26
B764	0.01	0.01	0.00	0.14	0.22	0.14	0.75	0.00
B772	0.45	0.59	0.02	0.77	1.47	1.03	7.07	0.09
B77L	0.80	0.97	0.08	0.84	0.14	0.13	8.70	0.12
B77W	0.69	1.12	0.02	0.67	6.59	5.78	5.36	0.05
B788	0.25	0.68	0.03	0.29	2.03	1.66	2.84	0.04
B789	0.78	1.56	0.02	0.70	4.56	3.66	7.32	0.09
B78X	0.09	0.21	0.00	0.15	1.27	1.26	2.46	0.01
BCS1	0.01	0.00	0.00	0.02	0.00	0.19	0.32	0.01
BCS3	0.00	0.08	0.00	0.20	0.65	0.27	1.78	0.03
BE20	0.01	0.01	0.00	0.00	0.04	0.04	0.08	0.00
BE40	0.00	0.00	0.00	0.02	0.00	0.01	0.16	0.00

Departures (Average Daily Operations)								
Aircraft Type	06L	06R	07L	07R	24L	24R	25L	25R
A19N	0.00	0.00	0.01	0.00	0.00	0.00	0.00	0.00
A20N	0.10	0.34	1.44	0.01	1.58	0.23	0.23	15.89
A21N	0.19	0.79	3.43	0.00	9.23	2.70	0.29	31.90
A306	0.00	0.00	0.03	0.00	0.00	0.00	0.22	0.81
A319	0.20	0.75	1.23	0.00	10.67	3.57	0.09	7.99
A320	0.27	0.55	2.35	0.00	3.60	1.33	0.34	25.76
A321	0.56	1.37	4.53	0.01	5.64	2.71	0.48	56.38
A332	0.01	0.02	0.55	0.01	2.70	0.93	0.30	2.44
A333	0.01	0.12	0.08	0.01	0.16	0.01	0.00	1.66
A342	0.00	0.00	0.00	0.00	0.00	0.00	0.00	0.01
A359	0.03	0.12	1.08	0.00	3.53	0.25	0.02	7.31
A35K	0.00	0.04	0.14	0.00	0.59	0.14	0.00	1.22
A388	0.00	0.23	0.00	0.46	4.54	0.00	2.12	0.00
AC90	0.00	0.00	0.00	0.00	0.00	0.00	0.00	0.01
ASTR	0.00	0.01	0.00	0.00	0.00	0.00	0.02	0.05
B350	0.02	0.09	0.03	0.00	0.20	0.07	0.49	1.13
B38M	0.20	0.91	2.00	0.00	14.02	4.98	0.14	13.74
B39M	0.21	0.43	1.57	0.00	1.62	0.85	0.48	16.03
B733	0.00	0.00	0.00	0.00	0.00	0.00	0.02	0.01
B734	0.00	0.00	0.01	0.00	0.01	0.00	0.03	0.03
B737	0.54	0.98	1.32	0.00	16.25	6.21	0.27	6.55
B738	0.67	1.84	4.14	0.00	20.44	6.33	0.81	41.63
B739	0.37	1.02	2.89	0.00	8.09	3.02	0.14	32.26
B744	0.00	0.08	0.60	0.01	0.04	0.00	2.29	4.86
B748	0.00	0.07	0.00	0.35	0.63	0.03	3.47	0.20
B752	0.15	0.45	0.97	0.00	3.82	1.19	0.34	9.95
B753	0.09	0.20	0.16	0.00	0.21	0.11	0.02	4.18
B762	0.00	0.00	0.04	0.00	0.00	0.00	0.05	0.25
B763	0.11	0.37	1.78	0.00	5.34	2.03	4.64	14.37
B764	0.00	0.04	0.10	0.00	0.38	0.03	0.00	0.70
B772	0.05	0.22	0.82	0.00	0.46	0.03	0.19	9.74
B77L	0.00	0.13	0.82	0.01	0.01	0.00	4.67	6.13
B77W	0.02	0.29	1.63	0.00	4.16	0.12	0.04	13.97
B788	0.01	0.08	0.64	0.00	1.84	0.34	0.07	4.86
B789	0.05	0.25	1.49	0.00	2.63	0.18	0.08	13.97
B78X	0.05	0.19	0.30	0.00	0.65	0.08	0.01	4.21
BCS1	0.00	0.00	0.03	0.00	0.05	0.05	0.00	0.40
BCS3	0.02	0.01	0.23	0.00	0.93	0.00	0.00	1.82
BE20	0.01	0.01	0.00	0.00	0.02	0.00	0.04	0.11
BE40	0.00	0.00	0.00	0.00	0.00	0.00	0.08	0.12

LAX Noise Management

Source: LAX ANOMS, based on available FAA radar flight track data.

note: Aircraft Type for certain military operations may not be available through our data source, therefore will not be included in the report.

LAX Average Daily Runway Use By Aircraft Type - 24 Hours First Quarter 2024

Arrivals (Average Daily Operations)								
Aircraft Type	06L	06R	07L	07R	24L	24R	25L	25R
BE99	0.03	0.02	0.00	0.00	0.15	0.08	0.23	0.01
BE9L	0.00	0.00	0.00	0.00	0.00	0.00	0.01	0.00
C150	0.00	0.00	0.00	0.00	0.01	0.00	0.00	0.00
C172	0.00	0.00	0.00	0.00	0.01	0.00	0.01	0.00
C182	0.00	0.00	0.00	0.00	0.03	0.03	0.19	0.01
C208	0.00	0.00	0.00	0.00	0.00	0.00	0.42	0.10
C25A	0.00	0.00	0.00	0.00	0.03	0.01	0.13	0.00
C25B	0.00	0.01	0.00	0.07	0.14	0.08	0.49	0.01
C25C	0.00	0.00	0.00	0.02	0.03	0.00	0.05	0.00
C525	0.00	0.00	0.00	0.00	0.00	0.02	0.07	0.00
C550	0.00	0.00	0.00	0.00	0.00	0.02	0.00	0.00
C55B	0.00	0.00	0.00	0.00	0.01	0.00	0.00	0.00
C560	0.00	0.01	0.00	0.01	0.01	0.00	0.09	0.00
C56X	0.00	0.02	0.00	0.08	0.10	0.19	0.62	0.00
C650	0.00	0.00	0.00	0.00	0.00	0.00	0.01	0.00
C680	0.02	0.02	0.00	0.03	0.04	0.07	0.49	0.00
C68A	0.02	0.01	0.00	0.15	0.32	0.21	1.71	0.00
C700	0.00	0.03	0.00	0.05	0.08	0.12	0.65	0.00
C750	0.00	0.02	0.00	0.11	0.08	0.11	0.57	0.02
CL30	0.03	0.07	0.00	0.15	0.24	0.24	1.68	0.01
CL35	0.04	0.09	0.00	0.15	0.26	0.27	1.81	0.00
CL60	0.02	0.01	0.01	0.15	0.14	0.18	1.03	0.00
CRJ2	0.02	0.03	0.00	0.04	0.14	0.19	0.93	0.02
CRJ7	0.23	0.36	0.00	1.05	3.23	3.19	9.05	0.08
E135	0.00	0.02	0.00	0.04	0.16	0.16	0.74	0.00
E145	0.00	0.00	0.00	0.16	0.10	0.08	1.43	0.00
E170	0.27	0.60	0.01	0.86	5.49	3.66	9.63	0.13
E190	0.00	0.00	0.00	0.01	0.02	0.01	0.21	0.01
E35L	0.01	0.00	0.00	0.02	0.02	0.02	0.09	0.00
E50P	0.00	0.00	0.00	0.02	0.00	0.01	0.05	0.00
E545	0.01	0.03	0.00	0.14	0.10	0.04	0.73	0.00
E550	0.00	0.01	0.00	0.03	0.03	0.02	0.58	0.00
E55P	0.07	0.01	0.00	0.15	0.32	0.31	1.42	0.03
E75L	1.77	2.47	0.01	2.08	23.80	21.88	19.32	0.27
E75S	0.01	0.00	0.00	0.02	0.01	0.15	0.05	0.00
F2TH	0.01	0.01	0.00	0.05	0.08	0.04	0.55	0.00
F900	0.00	0.01	0.00	0.03	0.07	0.03	0.37	0.00
FA50	0.01	0.00	0.00	0.00	0.00	0.00	0.18	0.00
FA7X	0.01	0.02	0.00	0.02	0.13	0.04	0.40	0.00
FA8X	0.00	0.00	0.00	0.02	0.00	0.00	0.04	0.00

Departures (Average Daily Operations)								
Aircraft Type	06L	06R	07L	07R	24L	24R	25L	25R
BE99	0.00	0.01	0.00	0.00	0.04	0.02	0.03	0.42
BE9L	0.00	0.00	0.00	0.00	0.00	0.00	0.01	0.00
C150	0.00	0.00	0.00	0.00	0.00	0.00	0.01	0.00
C17	0.00	0.01	0.00	0.00	0.00	0.01	0.00	0.00
C172	0.00	0.00	0.00	0.00	0.00	0.00	0.00	0.02
C182	0.00	0.00	0.00	0.00	0.00	0.00	0.01	0.25
C208	0.00	0.00	0.00	0.00	0.00	0.00	0.00	0.52
C25A	0.00	0.00	0.00	0.00	0.01	0.00	0.04	0.12
C25B	0.00	0.02	0.08	0.01	0.02	0.02	0.09	0.56
C25C	0.00	0.01	0.01	0.00	0.00	0.00	0.03	0.05
C525	0.00	0.00	0.00	0.00	0.00	0.00	0.01	0.08
C550	0.00	0.00	0.00	0.00	0.00	0.00	0.01	0.01
C55B	0.00	0.00	0.00	0.00	0.00	0.00	0.01	0.00
C560	0.00	0.00	0.00	0.00	0.01	0.00	0.04	0.08
C56X	0.01	0.02	0.03	0.00	0.03	0.01	0.34	0.53
C650	0.00	0.00	0.00	0.00	0.00	0.00	0.00	0.01
C680	0.00	0.02	0.04	0.00	0.01	0.00	0.18	0.43
C68A	0.01	0.03	0.10	0.01	0.05	0.03	0.70	1.48
C700	0.00	0.02	0.07	0.01	0.02	0.00	0.27	0.54
C750	0.00	0.04	0.08	0.00	0.00	0.01	0.22	0.56
CL30	0.03	0.07	0.14	0.01	0.07	0.03	0.67	1.45
CL35	0.00	0.07	0.18	0.00	0.08	0.02	0.68	1.64
CL60	0.04	0.05	0.11	0.00	0.04	0.01	0.51	0.81
CRJ2	0.00	0.00	0.11	0.00	0.01	0.00	0.07	1.21
CRJ7	0.25	0.58	0.81	0.00	2.60	0.98	0.02	11.89
E135	0.00	0.03	0.02	0.00	0.00	0.00	0.34	0.74
E145	0.03	0.04	0.09	0.01	0.01	0.01	0.49	1.08
E170	0.18	0.51	1.05	0.00	2.78	0.96	0.01	15.20
E190	0.01	0.00	0.00	0.00	0.03	0.00	0.04	0.18
E35L	0.00	0.00	0.02	0.00	0.00	0.00	0.08	0.08
E50P	0.00	0.01	0.02	0.00	0.00	0.00	0.00	0.05
E545	0.02	0.03	0.11	0.00	0.03	0.03	0.29	0.53
E550	0.00	0.01	0.01	0.00	0.01	0.00	0.19	0.46
E55P	0.02	0.05	0.10	0.00	0.02	0.01	0.75	1.33
E75L	1.24	2.65	2.43	0.01	26.77	11.02	0.01	27.57
E75S	0.00	0.00	0.01	0.00	0.01	0.19	0.00	0.03
F2TH	0.00	0.01	0.03	0.00	0.00	0.00	0.19	0.48
F900	0.01	0.03	0.04	0.00	0.01	0.00	0.12	0.30
FA50	0.00	0.00	0.01	0.00	0.01	0.00	0.04	0.12
FA7X	0.00	0.03	0.04	0.00	0.01	0.00	0.19	0.35

LAX Noise Management

Source: LAX ANOMS, based on available FAA radar flight track data.

note: Aircraft Type for certain military operations may not be available through our data source, therefore will not be included in the report.

LAX Average Daily Runway Use By Aircraft Type - 24 Hours First Quarter 2024

Arrivals (Average Daily Operations)								
Aircraft Type	06L	06R	07L	07R	24L	24R	25L	25R
G150	0.00	0.00	0.00	0.00	0.00	0.00	0.02	0.00
G280	0.01	0.00	0.00	0.09	0.00	0.03	0.27	0.00
GA5C	0.00	0.00	0.00	0.02	0.00	0.00	0.19	0.00
GA6C	0.00	0.00	0.00	0.02	0.04	0.02	0.35	0.00
GALX	0.00	0.00	0.00	0.03	0.00	0.00	0.21	0.00
GL5T	0.00	0.01	0.00	0.00	0.08	0.08	0.41	0.01
GL7T	0.03	0.01	0.00	0.05	0.10	0.05	0.56	0.00
GLEX	0.03	0.02	0.00	0.12	0.21	0.30	1.40	0.00
GLF4	0.01	0.05	0.00	0.15	0.16	0.18	1.63	0.01
GLF5	0.05	0.02	0.01	0.10	0.15	0.18	1.49	0.01
GLF6	0.01	0.05	0.00	0.18	0.33	0.27	1.11	0.03
H25B	0.03	0.03	0.02	0.10	0.05	0.09	0.88	0.00
H25C	0.00	0.00	0.00	0.00	0.00	0.00	0.01	0.00
HA4T	0.00	0.00	0.00	0.00	0.01	0.00	0.03	0.00
HDJT	0.00	0.01	0.00	0.01	0.01	0.01	0.11	0.00
J328	0.00	0.01	0.00	0.02	0.04	0.00	0.12	0.00
LJ31	0.00	0.01	0.00	0.00	0.00	0.00	0.00	0.00
LJ35	0.00	0.00	0.00	0.00	0.01	0.00	0.11	0.00
LJ40	0.00	0.00	0.00	0.00	0.00	0.01	0.02	0.00
LJ45	0.00	0.02	0.00	0.00	0.04	0.00	0.33	0.00
LJ60	0.01	0.01	0.00	0.00	0.02	0.03	0.27	0.00
LJ75	0.00	0.01	0.00	0.00	0.00	0.02	0.09	0.01
MD11	0.15	0.19	0.01	0.13	0.00	0.00	0.93	0.02
P180	0.00	0.01	0.00	0.01	0.00	0.00	0.02	0.00
P28A	0.00	0.00	0.00	0.00	0.00	0.00	0.01	0.00
PA46	0.00	0.00	0.00	0.00	0.01	0.00	0.00	0.00
PC12	0.01	0.04	0.00	0.04	0.02	0.03	1.36	0.11
PC24	0.00	0.00	0.00	0.01	0.01	0.02	0.09	0.00
PRM1	0.00	0.00	0.00	0.00	0.01	0.00	0.11	0.00
S22T	0.00	0.00	0.00	0.00	0.01	0.01	0.01	0.00
A124	0.00	0.00	0.00	0.00	0.00	0.00	0.01	0.00
GLF3	0.00	0.00	0.00	0.01	0.00	0.00	0.05	0.00
SF50	0.00	0.00	0.00	0.01	0.00	0.01	0.00	0.00
TBM7	0.00	0.00	0.00	0.00	0.01	0.00	0.03	0.00
MD83	0.00	0.00	0.00	0.00	0.00	0.00	0.02	0.00
BE35	0.00	0.00	0.00	0.00	0.00	0.00	0.01	0.00
MD81	0.00	0.00	0.00	0.00	0.00	0.00	0.01	0.00
A339	0.07	0.14	0.00	0.11	0.98	0.90	1.45	0.01
FA10	0.00	0.01	0.00	0.00	0.00	0.00	0.00	0.00
SW4	0.00	0.00	0.00	0.00	0.00	0.00	0.01	0.00

Departures (Average Daily Operations)								
Aircraft Type	06L	06R	07L	07R	24L	24R	25L	25R
FA8X	0.00	0.00	0.00	0.00	0.00	0.00	0.03	0.07
G150	0.00	0.00	0.00	0.00	0.00	0.00	0.00	0.02
G280	0.01	0.00	0.04	0.00	0.01	0.02	0.10	0.23
GA5C	0.01	0.00	0.01	0.00	0.01	0.00	0.05	0.10
GA6C	0.00	0.00	0.01	0.00	0.00	0.00	0.15	0.21
GALX	0.00	0.01	0.01	0.00	0.00	0.00	0.09	0.13
GL5T	0.00	0.03	0.00	0.00	0.01	0.00	0.22	0.31
GL7T	0.01	0.04	0.07	0.00	0.01	0.01	0.14	0.51
GLEX	0.03	0.01	0.08	0.00	0.03	0.05	0.65	1.22
GLF4	0.02	0.11	0.13	0.00	0.04	0.01	0.59	1.31
GLF5	0.00	0.03	0.09	0.00	0.03	0.00	0.66	1.19
GLF6	0.00	0.10	0.07	0.00	0.05	0.02	0.51	1.10
H25B	0.01	0.03	0.07	0.00	0.00	0.01	0.49	0.62
H25C	0.00	0.00	0.00	0.00	0.00	0.00	0.00	0.01
HA4T	0.00	0.00	0.00	0.00	0.00	0.00	0.00	0.05
HDJT	0.00	0.01	0.01	0.00	0.00	0.00	0.02	0.11
J328	0.00	0.03	0.00	0.00	0.01	0.00	0.08	0.08
LJ31	0.00	0.00	0.00	0.00	0.00	0.00	0.01	0.00
LJ35	0.00	0.00	0.00	0.00	0.00	0.00	0.03	0.09
LJ40	0.00	0.00	0.00	0.00	0.00	0.00	0.00	0.03
LJ45	0.00	0.00	0.01	0.00	0.00	0.00	0.19	0.20
LJ60	0.00	0.00	0.01	0.00	0.03	0.01	0.12	0.18
LJ75	0.00	0.00	0.01	0.00	0.00	0.01	0.05	0.04
MD11	0.00	0.02	0.09	0.00	0.00	0.00	0.87	0.45
P180	0.00	0.00	0.01	0.00	0.00	0.00	0.01	0.02
P28A	0.00	0.00	0.00	0.00	0.01	0.00	0.00	0.00
PA46	0.00	0.00	0.00	0.00	0.00	0.00	0.00	0.01
PC12	0.01	0.02	0.04	0.01	0.02	0.02	0.07	1.42
PC24	0.00	0.00	0.00	0.00	0.00	0.00	0.07	0.07
PRM1	0.01	0.00	0.00	0.00	0.00	0.00	0.01	0.11
S22T	0.01	0.00	0.00	0.00	0.00	0.00	0.01	0.01
A124	0.00	0.00	0.00	0.00	0.00	0.00	0.01	0.00
GLF3	0.00	0.00	0.01	0.00	0.01	0.00	0.00	0.04
SF50	0.00	0.00	0.01	0.00	0.00	0.00	0.00	0.01
TBM7	0.00	0.00	0.00	0.00	0.00	0.00	0.03	0.01
MD83	0.00	0.00	0.00	0.00	0.00	0.00	0.00	0.02
BE35	0.00	0.00	0.00	0.00	0.00	0.00	0.00	0.01
MD81	0.00	0.00	0.00	0.00	0.00	0.00	0.00	0.01
A339	0.02	0.11	0.20	0.01	1.46	0.12	0.20	1.55
FA10	0.00	0.00	0.01	0.00	0.00	0.00	0.00	0.00

LAX Noise Management

Source: LAX ANOMS, based on available FAA radar flight track data.

note: Aircraft Type for certain military operations may not be available through our data source, therefore will not be included in the report.

**LAX Average Daily Runway Use By Aircraft Type - 24 Hours
First Quarter 2024**

Arrivals (Average Daily Operations)								
Aircraft Type	06L	06R	07L	07R	24L	24R	25L	25R
GA7C	0.00	0.00	0.00	0.00	0.00	0.00	0.02	0.00
DA62	0.00	0.00	0.00	0.00	0.01	0.00	0.00	0.00
LJ70	0.00	0.02	0.00	0.01	0.00	0.01	0.01	0.00
CJ1	0.00	0.00	0.00	0.00	0.02	0.00	0.01	0.00

Departures (Average Daily Operations)								
Aircraft Type	06L	06R	07L	07R	24L	24R	25L	25R
SW4	0.00	0.00	0.00	0.00	0.00	0.00	0.00	0.01
GA7C	0.00	0.00	0.00	0.00	0.00	0.00	0.00	0.02

LAX Noise Management

Source: LAX ANOMS, based on available FAA radar flight track data.

note: Aircraft Type for certain military operations may not be available through our data source, therefore will not be included in the report.

LAX Average Daily Runway Use By Aircraft Type - Night Time (10pm - 7am)
First Quarter 2024

Arrivals (Average Daily Operations)								
Aircraft Type	06L	06R	07L	07R	24L	24R	25L	25R
A20N	0.23	0.44	0.02	0.53	0.33	0.24	4.38	0.05
A21N	1.52	2.71	0.08	0.69	1.51	1.65	5.41	0.14
A306	0.23	0.15	0.00	0.04	0.00	0.00	0.29	0.03
A319	0.08	0.15	0.00	0.08	0.48	0.40	1.07	0.01
A320	0.37	0.52	0.01	0.46	0.47	0.25	4.56	0.04
A321	0.89	1.07	0.05	1.02	1.84	1.45	7.85	0.05
A332	0.30	0.48	0.03	0.12	0.43	0.36	0.75	0.01
A333	0.00	0.01	0.00	0.00	0.03	0.01	0.01	0.01
A359	0.49	0.63	0.00	0.05	0.07	0.08	0.69	0.05
A35K	0.00	0.01	0.00	0.00	0.03	0.01	0.00	0.00
A388	0.08	0.29	0.00	0.01	0.15	0.24	0.10	0.00
ASTR	0.00	0.01	0.00	0.00	0.00	0.00	0.00	0.00
B350	0.00	0.00	0.00	0.00	0.03	0.02	0.07	0.00
B38M	0.56	0.24	0.00	0.20	1.01	1.22	1.55	0.02
B39M	0.18	0.20	0.01	0.27	0.25	0.37	3.21	0.03
B737	0.32	0.22	0.00	0.09	0.99	1.48	0.60	0.00
B738	0.87	0.87	0.02	0.58	1.59	1.80	4.25	0.08
B739	0.40	0.41	0.02	0.37	0.67	0.71	3.25	0.04
B744	0.26	0.70	0.04	0.24	0.03	0.02	1.18	0.01
B748	0.33	0.65	0.00	0.25	0.03	0.02	1.00	0.00
B752	0.23	0.24	0.01	0.23	0.24	0.27	1.36	0.01
B753	0.01	0.04	0.00	0.04	0.03	0.03	0.24	0.00
B762	0.00	0.07	0.00	0.03	0.00	0.00	0.08	0.00
B763	2.44	2.60	0.33	0.71	0.43	0.51	5.34	0.25
B764	0.00	0.01	0.00	0.01	0.00	0.01	0.02	0.00
B772	0.31	0.43	0.02	0.16	0.08	0.19	1.20	0.03
B77L	0.76	0.93	0.08	0.36	0.02	0.03	2.59	0.05
B77W	0.21	0.46	0.02	0.07	0.24	0.24	0.47	0.02
B788	0.14	0.48	0.03	0.05	0.24	0.16	0.59	0.03
B789	0.41	1.07	0.02	0.21	0.20	0.19	1.74	0.03
B78X	0.00	0.00	0.00	0.00	0.01	0.00	0.03	0.00
BCS3	0.00	0.01	0.00	0.00	0.08	0.01	0.18	0.00
BE20	0.00	0.00	0.00	0.00	0.00	0.01	0.01	0.00
BE40	0.00	0.00	0.00	0.00	0.00	0.01	0.01	0.00
BE99	0.03	0.02	0.00	0.00	0.15	0.08	0.23	0.01
C172	0.00	0.00	0.00	0.00	0.00	0.00	0.01	0.00
C182	0.00	0.00	0.00	0.00	0.00	0.01	0.02	0.00
C25A	0.00	0.00	0.00	0.00	0.01	0.00	0.01	0.00
C25B	0.00	0.01	0.00	0.00	0.00	0.00	0.02	0.00
C560	0.00	0.00	0.00	0.00	0.00	0.00	0.01	0.00

Departures (Average Daily Operations)								
Aircraft Type	06L	06R	07L	07R	24L	24R	25L	25R
A19N	0.00	0.00	0.01	0.00	0.00	0.00	0.00	0.00
A20N	0.04	0.10	0.60	0.00	0.48	0.09	0.20	6.04
A21N	0.11	0.20	0.85	0.00	0.48	0.20	0.29	9.77
A306	0.00	0.00	0.01	0.00	0.00	0.00	0.02	0.54
A319	0.02	0.12	0.15	0.00	0.90	0.43	0.02	1.19
A320	0.08	0.15	0.76	0.00	0.74	0.20	0.26	7.15
A321	0.11	0.38	1.35	0.00	1.70	0.52	0.43	16.54
A332	0.00	0.00	0.11	0.00	0.04	0.01	0.11	0.59
A333	0.00	0.00	0.00	0.00	0.01	0.00	0.00	0.03
A359	0.00	0.02	0.69	0.00	2.16	0.11	0.02	3.70
A388	0.00	0.05	0.00	0.16	1.01	0.00	0.99	0.00
B350	0.01	0.02	0.01	0.00	0.03	0.02	0.02	0.47
B38M	0.03	0.12	0.42	0.00	1.44	0.69	0.14	3.56
B39M	0.02	0.03	0.48	0.00	0.11	0.18	0.46	3.80
B737	0.09	0.13	0.18	0.00	1.30	0.67	0.04	1.74
B738	0.12	0.13	0.99	0.00	2.44	0.64	0.53	9.56
B739	0.08	0.19	0.37	0.00	1.41	0.15	0.13	4.51
B744	0.00	0.01	0.27	0.00	0.00	0.00	0.43	2.55
B748	0.00	0.03	0.00	0.14	0.01	0.00	1.78	0.20
B752	0.07	0.08	0.37	0.00	1.02	0.34	0.14	2.74
B753	0.04	0.02	0.05	0.00	0.00	0.00	0.02	0.98
B762	0.00	0.00	0.03	0.00	0.00	0.00	0.01	0.11
B763	0.02	0.11	0.63	0.00	0.68	0.23	1.22	8.54
B764	0.00	0.01	0.00	0.00	0.01	0.00	0.00	0.02
B772	0.02	0.03	0.26	0.00	0.01	0.00	0.04	3.03
B77L	0.00	0.02	0.27	0.01	0.00	0.00	0.46	3.15
B77W	0.00	0.01	0.71	0.00	0.58	0.02	0.00	6.04
B788	0.00	0.00	0.14	0.00	0.03	0.00	0.07	1.11
B789	0.00	0.02	0.58	0.00	0.35	0.01	0.05	4.81
B78X	0.00	0.00	0.02	0.00	0.00	0.00	0.00	0.12
BCS3	0.00	0.00	0.01	0.00	0.01	0.00	0.00	0.02
BE20	0.00	0.00	0.00	0.00	0.00	0.00	0.00	0.03
BE40	0.00	0.00	0.00	0.00	0.00	0.00	0.00	0.01
BE99	0.00	0.01	0.00	0.00	0.04	0.01	0.03	0.42
C182	0.00	0.00	0.00	0.00	0.00	0.00	0.00	0.02
C208	0.00	0.00	0.00	0.00	0.00	0.00	0.00	0.03
C25A	0.00	0.00	0.00	0.00	0.00	0.00	0.00	0.01
C25B	0.00	0.00	0.01	0.00	0.00	0.00	0.00	0.05
C560	0.00	0.00	0.00	0.00	0.00	0.00	0.00	0.02
C56X	0.00	0.00	0.00	0.00	0.00	0.00	0.00	0.04

LAX Noise Management

Source: LAX ANOMS, based on available FAA radar flight track data.

note: Aircraft Type for certain military operations may not be available through our data source, therefore will not be included in the report.

LAX Average Daily Runway Use By Aircraft Type - Night Time (10pm - 7am)
First Quarter 2024

Arrivals (Average Daily Operations)								
Aircraft Type	06L	06R	07L	07R	24L	24R	25L	25R
C56X	0.00	0.01	0.00	0.00	0.00	0.01	0.01	0.00
C680	0.02	0.00	0.00	0.00	0.00	0.00	0.04	0.00
C68A	0.01	0.00	0.00	0.00	0.00	0.00	0.08	0.00
C700	0.00	0.02	0.00	0.01	0.02	0.00	0.04	0.00
C750	0.00	0.01	0.00	0.01	0.00	0.00	0.01	0.00
CL30	0.01	0.02	0.00	0.01	0.00	0.01	0.13	0.00
CL35	0.00	0.02	0.00	0.00	0.01	0.01	0.05	0.00
CL60	0.00	0.00	0.00	0.01	0.01	0.00	0.04	0.00
CRJ2	0.00	0.01	0.00	0.01	0.00	0.01	0.05	0.00
CRJ7	0.02	0.04	0.00	0.05	0.35	0.44	0.31	0.00
E135	0.00	0.02	0.00	0.00	0.00	0.00	0.04	0.00
E145	0.00	0.00	0.00	0.00	0.00	0.00	0.04	0.00
E170	0.00	0.02	0.00	0.04	0.08	0.01	0.12	0.01
E190	0.00	0.00	0.00	0.00	0.00	0.00	0.08	0.00
E35L	0.00	0.00	0.00	0.00	0.00	0.00	0.02	0.00
E545	0.00	0.01	0.00	0.00	0.00	0.00	0.03	0.00
E550	0.00	0.00	0.00	0.00	0.00	0.00	0.03	0.00
E55P	0.01	0.00	0.00	0.01	0.00	0.01	0.03	0.00
E75L	0.27	0.20	0.01	0.11	0.86	1.22	1.33	0.01
E75S	0.01	0.00	0.00	0.00	0.00	0.00	0.00	0.00
F2TH	0.00	0.01	0.00	0.01	0.00	0.00	0.01	0.00
F900	0.00	0.00	0.00	0.01	0.01	0.01	0.01	0.00
FA7X	0.00	0.01	0.00	0.00	0.01	0.00	0.03	0.00
G280	0.01	0.00	0.00	0.01	0.00	0.00	0.00	0.00
GA6C	0.00	0.00	0.00	0.01	0.00	0.00	0.01	0.00
GALX	0.00	0.00	0.00	0.00	0.00	0.00	0.01	0.00
GL5T	0.00	0.01	0.00	0.00	0.00	0.00	0.02	0.00
GL7T	0.02	0.00	0.00	0.01	0.00	0.00	0.05	0.00
GLEX	0.02	0.01	0.00	0.01	0.01	0.00	0.15	0.00
GLF4	0.01	0.03	0.00	0.00	0.01	0.00	0.19	0.00
GLF5	0.03	0.01	0.01	0.03	0.02	0.01	0.15	0.00
GLF6	0.00	0.02	0.00	0.00	0.01	0.00	0.11	0.02
H25B	0.03	0.03	0.02	0.07	0.00	0.00	0.10	0.00
J328	0.00	0.00	0.00	0.00	0.01	0.00	0.02	0.00
LJ31	0.00	0.01	0.00	0.00	0.00	0.00	0.00	0.00
LJ35	0.00	0.00	0.00	0.00	0.00	0.00	0.02	0.00
LJ45	0.00	0.01	0.00	0.00	0.00	0.00	0.01	0.00
LJ60	0.01	0.01	0.00	0.00	0.00	0.00	0.02	0.00
MD11	0.14	0.19	0.01	0.04	0.00	0.00	0.31	0.02
PC12	0.01	0.02	0.00	0.00	0.00	0.00	0.13	0.00
B734	0.01	0.00	0.00	0.01	0.00	0.00	0.01	0.00

Departures (Average Daily Operations)								
Aircraft Type	06L	06R	07L	07R	24L	24R	25L	25R
C680	0.00	0.00	0.00	0.00	0.00	0.00	0.00	0.02
C68A	0.00	0.00	0.01	0.00	0.00	0.00	0.01	0.18
C700	0.00	0.00	0.01	0.00	0.00	0.00	0.00	0.02
C750	0.00	0.00	0.00	0.00	0.00	0.00	0.00	0.08
CL30	0.01	0.00	0.01	0.00	0.00	0.00	0.00	0.14
CL35	0.00	0.00	0.01	0.00	0.00	0.00	0.00	0.07
CL60	0.00	0.00	0.01	0.00	0.00	0.00	0.01	0.10
CRJ2	0.00	0.00	0.00	0.00	0.00	0.00	0.00	0.10
CRJ7	0.00	0.03	0.09	0.00	0.15	0.00	0.00	0.79
E135	0.00	0.01	0.00	0.00	0.00	0.00	0.00	0.04
E145	0.00	0.00	0.00	0.00	0.00	0.00	0.00	0.05
E170	0.00	0.03	0.03	0.00	0.05	0.02	0.01	0.18
E190	0.00	0.00	0.00	0.00	0.03	0.00	0.00	0.05
E35L	0.00	0.00	0.00	0.00	0.00	0.00	0.00	0.01
E545	0.00	0.00	0.00	0.00	0.00	0.00	0.02	0.11
E550	0.00	0.00	0.00	0.00	0.00	0.00	0.00	0.03
E55P	0.00	0.01	0.00	0.00	0.00	0.00	0.01	0.12
E75L	0.10	0.14	0.49	0.01	1.86	0.60	0.01	3.88
E75S	0.00	0.00	0.00	0.00	0.00	0.02	0.00	0.00
F2TH	0.00	0.00	0.01	0.00	0.00	0.00	0.00	0.08
F900	0.00	0.00	0.01	0.00	0.00	0.00	0.00	0.08
FA7X	0.00	0.01	0.01	0.00	0.00	0.00	0.01	0.08
FA8X	0.00	0.00	0.00	0.00	0.00	0.00	0.00	0.01
G280	0.00	0.00	0.00	0.00	0.00	0.00	0.00	0.02
GA6C	0.00	0.00	0.00	0.00	0.00	0.00	0.00	0.01
GALX	0.00	0.00	0.00	0.00	0.00	0.00	0.01	0.00
GL5T	0.00	0.00	0.00	0.00	0.00	0.00	0.00	0.07
GL7T	0.00	0.00	0.01	0.00	0.00	0.00	0.01	0.12
GLEX	0.00	0.00	0.02	0.00	0.00	0.00	0.02	0.23
GLF4	0.01	0.01	0.02	0.00	0.00	0.00	0.01	0.24
GLF5	0.00	0.00	0.01	0.00	0.00	0.00	0.02	0.14
GLF6	0.00	0.00	0.00	0.00	0.00	0.00	0.01	0.15
H25B	0.01	0.00	0.00	0.00	0.00	0.00	0.01	0.14
J328	0.00	0.00	0.00	0.00	0.00	0.00	0.00	0.02
LJ45	0.00	0.00	0.00	0.00	0.00	0.00	0.01	0.04
LJ60	0.00	0.00	0.00	0.00	0.00	0.00	0.01	0.02
LJ75	0.00	0.00	0.01	0.00	0.00	0.00	0.00	0.00
MD11	0.00	0.00	0.03	0.00	0.00	0.00	0.00	0.09
PC12	0.00	0.00	0.00	0.01	0.00	0.00	0.00	0.05
A124	0.00	0.00	0.00	0.00	0.00	0.00	0.01	0.00
B734	0.00	0.00	0.00	0.00	0.00	0.00	0.01	0.02

LAX Noise Management

Source: LAX ANOMS, based on available FAA radar flight track data.

note: Aircraft Type for certain military operations may not be available through our data source, therefore will not be included in the report.

**LAX Average Daily Runway Use By Aircraft Type - Night Time (10pm - 7am)
First Quarter 2024**

Arrivals (Average Daily Operations)								
Aircraft Type	06L	06R	07L	07R	24L	24R	25L	25R
FA50	0.01	0.00	0.00	0.00	0.00	0.00	0.00	0.00
PRM1	0.00	0.00	0.00	0.00	0.00	0.00	0.01	0.00
A339	0.01	0.01	0.00	0.00	0.01	0.00	0.00	0.00

Departures (Average Daily Operations)								
Aircraft Type	06L	06R	07L	07R	24L	24R	25L	25R
C25C	0.00	0.00	0.00	0.00	0.00	0.00	0.00	0.01
FA50	0.00	0.00	0.00	0.00	0.00	0.00	0.00	0.01
PRM1	0.00	0.00	0.00	0.00	0.00	0.00	0.00	0.03
E50P	0.00	0.00	0.00	0.00	0.00	0.00	0.00	0.01
MD83	0.00	0.00	0.00	0.00	0.00	0.00	0.00	0.01
B733	0.00	0.00	0.00	0.00	0.00	0.00	0.00	0.01
C550	0.00	0.00	0.00	0.00	0.00	0.00	0.01	0.00
A339	0.00	0.02	0.02	0.00	0.23	0.01	0.00	0.19

LAX Noise Management

Source: LAX ANOMS, based on available FAA radar flight track data.

note: Aircraft Type for certain military operations may not be available through our data source, therefore will not be included in the report.

LAX Average Daily Runway Use By Aircraft Group - 24 Hours
First Quarter 2024

Arrivals (Average Daily Operations)								
Aircraft Group	06L	06R	07L	07R	24L	24R	25L	25R
Small Jet	2.77	4.22	0.07	6.74	36.49	32.68	65.13	0.66
Small Narrow-Body Jet	6.00	8.98	0.18	16.15	58.12	51.57	152.10	2.23
Large Narrow-Body Jet	3.49	5.40	0.16	9.81	17.59	15.60	88.80	0.99
Small Wide-Body Jet	2.78	3.00	0.33	1.93	2.75	2.43	17.70	0.30
Large Wide-Body Jet	5.49	9.22	0.27	5.74	26.53	22.41	53.93	0.58
Non-Jet	0.09	0.16	0.00	0.13	0.99	0.67	3.19	0.23
Military*	0.00	0.00	0.00	0.00	0.00	0.00	0.00	0.00

Departures (Average Daily Operations)								
Aircraft Group	06L	06R	07L	07R	24L	24R	25L	25R
Small Jet	1.97	4.81	6.41	0.07	32.90	13.49	10.98	78.02
Small Narrow-Body Jet	2.59	6.82	17.23	0.01	77.31	26.57	2.62	162.32
Large Narrow-Body Jet	0.99	2.81	9.09	0.01	18.90	6.71	1.13	102.41
Small Wide-Body Jet	0.11	0.42	1.96	0.00	5.73	2.07	4.91	16.14
Large Wide-Body Jet	0.27	1.97	8.44	0.87	23.41	2.24	14.33	72.56
Non-Jet	0.05	0.13	0.09	0.01	0.32	0.12	0.73	4.00
Military*	0.00	0.01	0.00	0.00	0.00	0.01	0.00	0.00

LAX Noise Management

Source: LAX ANOMS, based on available FAA radar flight track data.

* Aircraft Type for certain military operations may not be available through our data source, therefore will not be included in the report.

**LAX Average Daily Runway Use By Aircraft Group - Night Time (10pm - 7am)
First Quarter 2024**

Arrivals (Average Daily Operations)								
Aircraft Group	06L	06R	07L	07R	24L	24R	25L	25R
Small Jet	0.52	0.59	0.04	0.44	1.43	1.76	3.44	0.04
Small Narrow-Body Jet	3.01	3.05	0.09	2.59	5.88	6.49	23.15	0.29
Large Narrow-Body Jet	2.65	4.07	0.14	1.99	3.62	3.41	14.86	0.21
Small Wide-Body Jet	2.67	2.84	0.33	0.80	0.43	0.52	5.73	0.29
Large Wide-Body Jet	3.44	6.34	0.26	1.58	1.58	1.56	10.66	0.29
Non-Jet	0.04	0.05	0.00	0.00	0.19	0.12	0.49	0.01
Military*	0.00	0.00	0.00	0.00	0.00	0.00	0.00	0.00

Departures (Average Daily Operations)								
Aircraft Group	06L	06R	07L	07R	24L	24R	25L	25R
Small Jet	0.13	0.25	0.80	0.01	2.07	0.65	0.22	7.64
Small Narrow-Body Jet	0.48	0.98	3.98	0.00	8.86	3.04	1.80	37.67
Large Narrow-Body Jet	0.33	0.68	2.63	0.00	3.21	1.05	0.88	30.02
Small Wide-Body Jet	0.02	0.12	0.67	0.00	0.69	0.23	1.25	9.21
Large Wide-Body Jet	0.02	0.23	3.13	0.32	4.45	0.16	3.97	25.63
Non-Jet	0.01	0.03	0.01	0.01	0.08	0.04	0.05	1.08
Military*	0.00	0.00	0.00	0.00	0.00	0.00	0.00	0.00

LAX Noise Management

Source: LAX ANOMS, based on available FAA radar flight track data.

* Aircraft Type for certain military operations may not be available through our data source, therefore will not be included in the report.

Summary of Actions Taken by LAWA to Comply with Conditions to the Current Noise Variance for Los Angeles International Airport

First Quarter 2024

The Los Angeles World Airports (LAWA) continuously works to operate an airport that maintains the highest possible environmental quality of life for surrounding communities. To that end, LAWA continues to take the following actions:

- LAWA continues to implement its Aircraft Noise Mitigation Program (ANMP), designed to fund the mitigation of all incompatible land uses within the noise impact boundary as defined in the State Noise Standards. LAWA updates the ANMP report periodically to ensure that it reasonably represents the mitigation and funding programs that are in place.
- With each second quarter Quarterly Report, LAWA submits an annual update of the ANMP. This update includes the number of dwellings acoustically insulated, the cost of the program, the anticipated funding availability, and the anticipated completion date of the project.
- LAWA continues to monitor and enforce, as appropriate, all of its informal noise abatement procedures in place at LAX, including but not limited to the early turn program, preferential runway use procedures and over ocean operations procedures, as well as the formal maintenance run-up restrictions.
- LAWA continues to work with the Federal Aviation Administration and pilots to improve compliance with its “no turns before the shoreline” policy.
- LAWA updated the 2014 Report on Implementation of the Preferential Runway Use Policy at LAX to reevaluate conditions related to compliance, implementation, and possible improvements, and submitted it to Caltrans and Los Angeles County on June 29, 2023.
- LAWA continues to provide the information to the County of Los Angeles needed to prepare Quarterly Reports of Noise Monitoring. Included with the noise monitoring information forwarded each quarter is this brief report regarding the implementation of each of the conditions to the Variance.

- LAWA completed an upgrade of the Noise and Operations Monitoring System for LAX in 2022. LAWA received Caltrans certification of the upgraded airport noise and operations monitoring system in October 2022 and provided the County of Los Angeles with a copy of all submitted documentation and Caltrans certification at that time. The County continues to review and audit the data LAWA submits in each Quarterly Report.
- LAWA continues to include tabular data and graphical illustrations with each Quarterly Report describing and comparing the level and type of usage for each runway at LAX during the quarter. In addition, LAWA is including tabular data describing the daily average number of arrivals and departures by aircraft type and model on each runway during all hours and during nighttime hours from 10 pm to 7 am. LAWA is also now providing the runway usage data to the FAA for their use in monitoring air traffic runway usage.
- LAWA continues to monitor and enforce its maintenance run-up curfew (2300-0600). When applicable, LAWA will include with each Quarterly Report, information regarding monitoring and enforcement activities undertaken during the quarter. There were no enforcement actions reported during the first quarter 2024.
- LAWA continues to provide the LAX Noise Comment Phone Line with an option for callers to have a live answer as available, and continues to retrieve any complaint messages and provide appropriate responses in a timely manner.