

# California State Airport Noise Standards Quarterly Report

First Quarter 2023



LOS ANGELES INTERNATIONAL AIRPORT

Los Angeles World Airports

May 23, 2023

## **TABLE OF CONTENTS**

---

### California State Airport Noise Standards Quarterly Report

1. Division of Aeronautics Form 617
2. Incompatible Land Use Data
3. Daily Aircraft CNEL Data
4. Runway Utilization Report
  - Summary of Runway Use
  - Summary of Runway Flow
5. Average Daily Runway Use by Aircraft Type
  - 24 Hour Average
  - Night-time Average (10pm – 7am)
6. Average Daily Runway Use by Aircraft Group
  - 24 Hour Average
  - Night-time Average (10pm – 7am)
7. Summary of Actions

### Attachment

Noise contour map

**SUMMARY OF STATISTICAL INFORMATION  
FOR  
CALIFORNIA DEPARTMENT OF TRANSPORTATION**

Los Angeles International Airport  
First Quarter 2023

1. Size of Noise Impact Area as defined in the Noise Standards (California Code of Regulations, Title 21, Chapter 2.5, Subchapter 6):

**340.4 Acres**

---

2. Estimated number of dwelling units included in the Noise Impact Area as defined in the Noise Standards:

**4,372**

---

3. Estimated number of people residing within the Noise Impact Area as defined in the Noise Standards:

**16,839**

---

4. Identification of aircraft type having highest takeoff noise level operating at this airport together with estimated number of operations by this aircraft type during the calendar quarter reporting period:

**B747: 2,377**

---

5. Total number of aircraft operations during the calendar quarter\*:

**133,303**

---

6. Number of Air Carrier operations during the calendar quarter: (Not Mandatory)\*

**123,597**

---

7. Percentage of Air Carrier operations by aircraft certificated under Federal Aviation Regulation (FAR) Part 36, Stage III. (Not Mandatory)

**100 %**

---

8. Estimated number of operations by General Aviation aircraft during the calendar quarter: (Not Mandatory)\*

**3,519**

---

9. Estimated number of operations by Military aircraft during the calendar quarter: (Not Mandatory)\*

**115**

---

# LOS ANGELES INTERNATIONAL AIRPORT

## Incompatible Land Use

### Annual Noise Impact Accumulated by Noise Zone: CNEL 65, 70, and 75 +

<b>1Q23</b>	<b>Total Cumulative Noise Impact Areas - All Jurisdictions</b>											
	<i>CNEL 65 dB and Above</i>				<i>CNEL 70 dB and Above</i>				<i>CNEL 75 dB and Above</i>			
Land Use	Acres	Dwelling Units	Parcels	Population	Acres	Dwelling Units	Parcels	Population	Acres	Dwelling Units	Parcels	Population
Single Family	169.3	1,158	1,185	4,416	28.7	184	186	845	0.0	0	0	0
Multi-Family	153.6	3,206	945	12,404	30.1	515	216	2,016	0.0	0	0	0
Mobile Home	0.6	0	2	0	0.0	0	0	0	0.0	0	0	0
Schools	3.5	0	19	0	3.0	0	17	0	0.0	0	0	0
Churches	13.4	8	24	19	2.4	0	2	0	0.0	0	0	0
Hospitals	0.0	0	0	0	0.0	0	0	0	0.0	0	0	0
<b>Total Incompatible</b>	<b>340.4</b>	<b>4,372</b>	<b>2,175</b>	<b>16,839</b>	<b>64.2</b>	<b>699</b>	<b>421</b>	<b>2,862</b>	<b>0.0</b>	<b>0</b>	<b>0</b>	<b>0</b>

Note: Parcels and dwelling units may not match for single family land uses due to subdivision.  
Parcels for multifamily land uses reflect only the common area parcel, except for condominiums.

Report Date: 05/22/2023

# LOS ANGELES INTERNATIONAL AIRPORT

## Incompatible Land Use

### Annual Noise Impact Accumulated by Noise Zone: CNEL 65, 70, and 75 +

<b>1Q23</b>	<b>Total Cumulative Noise Impact Areas - Athens</b>											
	<i>CNEL 65 dB and Above</i>				<i>CNEL 70 dB and Above</i>				<i>CNEL 75 dB and Above</i>			
	Land Use	Acres	Dwelling Units	Parcels	Population	Acres	Dwelling Units	Parcels	Population	Acres	Dwelling Units	Parcels
Single Family	11.1	86	99	313	0.0	0	0	0	0.0	0	0	0
Multi-Family	11.7	210	82	743	0.0	0	0	0	0.0	0	0	0
Mobile Home	0.0	0	0	0	0.0	0	0	0	0.0	0	0	0
Schools	0.0	0	0	0	0.0	0	0	0	0.0	0	0	0
Churches	0.4	0	2	0	0.0	0	0	0	0.0	0	0	0
Hospitals	0.0	0	0	0	0.0	0	0	0	0.0	0	0	0
<b>Total Incompatible</b>	<b>23.2</b>	<b>296</b>	<b>183</b>	<b>1,057</b>	<b>0.0</b>	<b>0</b>	<b>0</b>	<b>0</b>	<b>0.0</b>	<b>0</b>	<b>0</b>	<b>0</b>

Note: Parcels and dwelling units may not match for single family land uses due to subdivision.  
Parcels for multifamily land uses reflect only the common area parcel, except for condominiums.

Report Date: 05/22/2023

# LOS ANGELES INTERNATIONAL AIRPORT

## Incompatible Land Use

### Annual Noise Impact Accumulated by Noise Zone: CNEL 65, 70, and 75 +

<b>1Q23</b>	<b>Total Cumulative Noise Impact Areas - Del Aire</b>											
	<i>CNEL 65 dB and Above</i>				<i>CNEL 70 dB and Above</i>				<i>CNEL 75 dB and Above</i>			
	Land Use	Acres	Dwelling Units	Parcels	Population	Acres	Dwelling Units	Parcels	Population	Acres	Dwelling Units	Parcels
Single Family	0.0	0	0	0	0.0	0	0	0	0.0	0	0	0
Multi-Family	0.0	0	0	0	0.0	0	0	0	0.0	0	0	0
Mobile Home	0.0	0	0	0	0.0	0	0	0	0.0	0	0	0
Schools	0.0	0	0	0	0.0	0	0	0	0.0	0	0	0
Churches	0.0	0	0	0	0.0	0	0	0	0.0	0	0	0
Hospitals	0.0	0	0	0	0.0	0	0	0	0.0	0	0	0
<b>Total Incompatible</b>	<b>0.0</b>	<b>0</b>	<b>0</b>	<b>0</b>	<b>0.0</b>	<b>0</b>	<b>0</b>	<b>0</b>	<b>0.0</b>	<b>0</b>	<b>0</b>	<b>0</b>

Note: Parcels and dwelling units may not match for single family land uses due to subdivision.  
 Parcels for multifamily land uses reflect only the common area parcel, except for condominiums.

Report Date: 05/22/2023

# LOS ANGELES INTERNATIONAL AIRPORT

## Incompatible Land Use

### Annual Noise Impact Accumulated by Noise Zone: CNEL 65, 70, and 75 +

<b>1Q23</b>	<b>Total Cumulative Noise Impact Areas - City of El Segundo</b>											
	<i>CNEL 65 dB and Above</i>				<i>CNEL 70 dB and Above</i>				<i>CNEL 75 dB and Above</i>			
	Land Use	Acres	Dwelling Units	Parcels	Population	Acres	Dwelling Units	Parcels	Population	Acres	Dwelling Units	Parcels
Single Family	52.5	344	345	899	2.7	16	16	36	0.0	0	0	0
Multi-Family	14.1	397	151	886	4.9	186	86	408	0.0	0	0	0
Mobile Home	0.0	0	0	0	0.0	0	0	0	0.0	0	0	0
Schools	0.0	0	0	0	0.0	0	0	0	0.0	0	0	0
Churches	0.7	0	2	0	0.0	0	0	0	0.0	0	0	0
Hospitals	0.0	0	0	0	0.0	0	0	0	0.0	0	0	0
<b>Total Incompatible</b>	<b>67.3</b>	<b>741</b>	<b>498</b>	<b>1,785</b>	<b>7.6</b>	<b>202</b>	<b>102</b>	<b>445</b>	<b>0.0</b>	<b>0</b>	<b>0</b>	<b>0</b>

Note: Parcels and dwelling units may not match for single family land uses due to subdivision.  
Parcels for multifamily land uses reflect only the common area parcel, except for condominiums.

Report Date: 05/22/2023

# LOS ANGELES INTERNATIONAL AIRPORT

## Incompatible Land Use

### Annual Noise Impact Accumulated by Noise Zone: CNEL 65, 70, and 75 +

<b>1Q23</b>	<b>Total Cumulative Noise Impact Areas - City of Inglewood</b>											
	<i>CNEL 65 dB and Above</i>				<i>CNEL 70 dB and Above</i>				<i>CNEL 75 dB and Above</i>			
	Land Use	Acres	Dwelling Units	Parcels	Population	Acres	Dwelling Units	Parcels	Population	Acres	Dwelling Units	Parcels
Single Family	57.3	397	405	1,617	0.3	2	2	8	0.0	0	0	0
Multi-Family	83.0	1,932	450	7,615	0.4	12	3	43	0.0	0	0	0
Mobile Home	0.6	0	2	0	0.0	0	0	0	0.0	0	0	0
Schools	0.0	0	0	0	0.0	0	0	0	0.0	0	0	0
Churches	8.0	6	13	13	2.1	0	1	0	0.0	0	0	0
Hospitals	0.0	0	0	0	0.0	0	0	0	0.0	0	0	0
<b>Total Incompatible</b>	<b>148.9</b>	<b>2,335</b>	<b>870</b>	<b>9,245</b>	<b>2.8</b>	<b>14</b>	<b>6</b>	<b>51</b>	<b>0.0</b>	<b>0</b>	<b>0</b>	<b>0</b>

Note: Parcels and dwelling units may not match for single family land uses due to subdivision.  
Parcels for multifamily land uses reflect only the common area parcel, except for condominiums.

Report Date: 05/22/2023



# LOS ANGELES INTERNATIONAL AIRPORT

## Incompatible Land Use

### Annual Noise Impact Accumulated by Noise Zone: CNEL 65, 70, and 75 +

<b>1Q23</b>	<b>Total Cumulative Noise Impact Areas - Lennox</b>											
	<i>CNEL 65 dB and Above</i>				<i>CNEL 70 dB and Above</i>				<i>CNEL 75 dB and Above</i>			
	Land Use	Acres	Dwelling Units	Parcels	Population	Acres	Dwelling Units	Parcels	Population	Acres	Dwelling Units	Parcels
Single Family	48.4	331	336	1,586	25.8	166	168	801	0.0	0	0	0
Multi-Family	44.7	667	262	3,160	24.8	317	127	1,565	0.0	0	0	0
Mobile Home	0.0	0	0	0	0.0	0	0	0	0.0	0	0	0
Schools	3.5	0	19	0	3.0	0	17	0	0.0	0	0	0
Churches	1.6	1	3	4	0.3	0	1	0	0.0	0	0	0
Hospitals	0.0	0	0	0	0.0	0	0	0	0.0	0	0	0
<b>Total Incompatible</b>	<b>98.2</b>	<b>999</b>	<b>620</b>	<b>4,751</b>	<b>53.9</b>	<b>483</b>	<b>313</b>	<b>2,366</b>	<b>0.0</b>	<b>0</b>	<b>0</b>	<b>0</b>

Note: Parcels and dwelling units may not match for single family land uses due to subdivision.  
Parcels for multifamily land uses reflect only the common area parcel, except for condominiums.

Report Date: 05/22/2023

# LOS ANGELES INTERNATIONAL AIRPORT

## Incompatible Land Use

### Annual Noise Impact Accumulated by Noise Zone: CNEL 65, 70, and 75 +

<b>1Q23</b>	<b>Total Cumulative Noise Impact Areas - South and South East LA</b>											
	<i>CNEL 65 dB and Above</i>				<i>CNEL 70 dB and Above</i>				<i>CNEL 75 dB and Above</i>			
	Land Use	Acres	Dwelling Units	Parcels	Population	Acres	Dwelling Units	Parcels	Population	Acres	Dwelling Units	Parcels
Single Family	0.0	0	0	0	0.0	0	0	0	0.0	0	0	0
Multi-Family	0.0	0	0	0	0.0	0	0	0	0.0	0	0	0
Mobile Home	0.0	0	0	0	0.0	0	0	0	0.0	0	0	0
Schools	0.0	0	0	0	0.0	0	0	0	0.0	0	0	0
Churches	1.4	0	3	0	0.0	0	0	0	0.0	0	0	0
Hospitals	0.0	0	0	0	0.0	0	0	0	0.0	0	0	0
<b>Total Incompatible</b>	<b>1.4</b>	<b>0</b>	<b>3</b>	<b>0</b>	<b>0.0</b>	<b>0</b>	<b>0</b>	<b>0</b>	<b>0.0</b>	<b>0</b>	<b>0</b>	<b>0</b>

Note: Parcels and dwelling units may not match for single family land uses due to subdivision.  
Parcels for multifamily land uses reflect only the common area parcel, except for condominiums.

Report Date: 05/22/2023

# LOS ANGELES INTERNATIONAL AIRPORT

## Incompatible Land Use

### Annual Noise Impact Accumulated by Noise Zone: CNEL 65, 70, and 75 +

<b>1Q23</b>	<b>Total Cumulative Noise Impact Areas - Westchester/Playa Del Rey</b>											
	<i>CNEL 65 dB and Above</i>				<i>CNEL 70 dB and Above</i>				<i>CNEL 75 dB and Above</i>			
	Land Use	Acres	Dwelling Units	Parcels	Population	Acres	Dwelling Units	Parcels	Population	Acres	Dwelling Units	Parcels
Single Family	0.0	0	0	0	0.0	0	0	0	0.0	0	0	0
Multi-Family	0.0	0	0	0	0.0	0	0	0	0.0	0	0	0
Mobile Home	0.0	0	0	0	0.0	0	0	0	0.0	0	0	0
Schools	0.0	0	0	0	0.0	0	0	0	0.0	0	0	0
Churches	1.3	1	1	2	0.0	0	0	0	0.0	0	0	0
Hospitals	0.0	0	0	0	0.0	0	0	0	0.0	0	0	0
<b>Total Incompatible</b>	<b>1.3</b>	<b>1</b>	<b>1</b>	<b>2</b>	<b>0.0</b>	<b>0</b>	<b>0</b>	<b>0</b>	<b>0.0</b>	<b>0</b>	<b>0</b>	<b>0</b>

Note: Parcels and dwelling units may not match for single family land uses due to subdivision.  
Parcels for multifamily land uses reflect only the common area parcel, except for condominiums.

Report Date: 05/22/2023



January	PDR1	PDR2	ESG1	ESG2	ESG3	ESG5	DEL1	WCH2	WCH3	WCH5	WCH6	ING1	ING2	ING3	ING6	ING8	LNX1	LNX2	LNX3	LNX4	ATH2	SLA1	SLA3	SLA5	SLA7
1 Sun	68	63	64	67	62	58	58	57	56	73	62	68	65	67	70	61	77	73	66	71	69	67	62	66	69
2 Mon	68	63	64	68	63	61	50	64	60	73	62	59	66	67	68	59	72	61	59	63	65	65	60	64	63
3 Tue	65	59	61	66	59	58	63	63	62	70	68	65	66	64	67	63	72	70	70	69	61	65	64	60	56
4 Wed	63	52	56	61	54	54	62	65	63	72	70	66	67	64	68	63	75	72	72	72	58		65	59	53
5 Thu	67	61	61	65	59	57	60	64	65	74	68	65	67	67	71	63	75	70	70	70	66		65	64	64
6 Fri	66	60	65	68	64	63	61	60	57	72	61	59	64	66	69	61	73	60	60	64	65	63	61	64	65
7 Sat	66	61	63	67	63	63	57	57	60	71	60	59	64	64	67	59	72	60	60	63	66	63	61	63	65
8 Sun	68	62	63	67	61	59	53	64	57	72	62	58	65	66	67	58	72	59	59	62	65	64	60	63	63
9 Mon	66	60	59	63	56	55	61	66	65	71	69	64	66	64	67	62	71	69	69	68	58		64	57	50
10 Tue	67	60	63	65	60	57	59	63	63	74	68	65	67	67	71	65	76	72	70	71	65		67	64	64
11 Wed	67	61	64	68	62	60	55	64	60	72	61	58	64	65	68	59	73	60	60	63	65	64	61	66	64
12 Thu	67	61	64	68	64	65	63	57	55	71	61	59	64	65	68	59	73	61	59	63	65	63	61	64	64
13 Fri	67	61	64	68	63	63	57	62	61	72	64	59	65	66	67	61	73	60	62	65	65	64	60	63	65
14 Sat	66	59	63	67	62	58	56	64	61	72	65	62	65	65	69	62	74	67	66	66	65		63	63	62
15 Sun	68	61	63	67	61	57	57	63	62	73	65	63	66	67	70	64	75	67	67	68	67		65	65	65
16 Mon	67	62	63	66	62	59	61	61	61	71	66	66	66	66	71	66	77	71	70	70	65		65	64	63
17 Tue	67	60	64	67	62	61	60	56	54	72	62	58	65	66	68	64	72	60	59	63	65	66	61	64	64
18 Wed	67	61	64	67	62	61	58	63	62	72	61	59	65	66	68	61	73	63	61	64	66	64	61	65	65
19 Thu	67	61	65	68	63	62	61	60	54	72	62	60	64	66	68	60	72	59	59	63	65	64	61	63	64
20 Fri	67	61	64	68	63	62	58	62	60	72	61	59	65	66	68	61	73	60	60	64	68	64	61	63	64
21 Sat	65	59	62	66	62	63	57	61	58	70	60	57	63	64	67	58	72	61	68	62	64	62	60	62	62
22 Sun	65	59	62	67	63	62	57	63	58	71	61	58	64	65	67	58	71	59	59	62	64	64	61	63	62
23 Mon	65	59	60	65	60	68	57	61	60	71	62	60	63	64	66	60	72	67	64	66	64	65	62	63	61
24 Tue	64	59	63	66	62	62	57	64	61	71	61	58	63	64	66	58	72	59	59	62	64	62	59	62	61
25 Wed	65	59	63	67	63	63	59	63	64	71	61	59	63	65	66	58	72	62	63	63	64	62	60	62	63
26 Thu	66	59	63	67	62	59	57	65	63	70	60	59	63	64	66	57	72	59	62	62	64	62	60	62	63
27 Fri	67	61	62	66	62	61	58	63	62	72	62	59	65	67	69	61	75	62	63	64	66	64	61	65	66
28 Sat	66	60	62	66	60	57	55	62	56	70	59	57	63	64	66	58	72	58	61	64	65	63	60	63	63
29 Sun	68	62	63	67	60	54	42	63	62	72	62	59	65	67	67	59	72	59	60	62	65	64	60	63	63
30 Mon	67	61	63	67	63	59	55	60	61	72	65	62	65	65	67	61	72	65	63	63	64	63	61	62	62
31 Tue	63	56	62	66	62	60	55	60	60	70	60	57	62	63	66	57	71	59	61	62	64	61	59	62	61



February	PDR1	PDR2	ESG1	ESG2	ESG3	ESG5	DEL1	WCH2	WCH3	WCH5	WCH6	ING1	ING2	ING3	ING6	ING8	LNX1	LNX2	LNX3	LNX4	ATH2	SLA1	SLA3	SLA5	SLA7
1 Wed	64	58	61	66	62	63	59	62	60	70	60	57	63	64	65	57	72	59	59	60	63	62	59	62	61
2 Thu	66	60	62	67	64	64	62	61	60	71	61	60	64	65	67	59	72	59	60	62	64	62	61	63	62
3 Fri	66	60	63	67	65	65	58	61	63	72	62	59	64	66	68	61	73	61	65	63	64	63	60	63	63
4 Sat	66	60	63	67	63	66	67	62	64	71	61	60	63	64	67	60	73	60	63	63	66	62	60	64	63
5 Sun	66	60	63	67	62	59	57	61	57	73	62	59	65	66	69	60	74	60	63	64	65	65	62	64	64
6 Mon	66	60	63	67	62	61	63	57	58	72	61	58	64	66	68	60	74	64	60	65	65	64	61	64	64
7 Tue	65	58	62	66	62	60	62	63	61	70	60	58	63	64	66	58	72	62	62	62	63	62	59	63	63
8 Wed	66	60	63	67	64	64	60	65	61	70	61	58	64	64	67	59	74	61	63	63	64	63	60	63	63
9 Thu	65	59	62	67	64	65	61	63	63	70	61	58	63	64	66	58	73	62	61	62	64	62	59	62	62
10 Fri	66	59	62	67	65	63	55	63	62	71	60	57	63	64	66	58	72	63	61	62	63	61	58	61	62
11 Sat	66	60	63	67	61	57	48	63	61	71	60	58	64	65	66	58	72	60	61	62	64	63	60	63	63
12 Sun	66	60	63	67	61	58	48	62	62	72	61	58	65	65	66	59	72	59	61	63	66	64	60	63	63
13 Mon	67	62	64	67	60	56	55	62	60	72	62	58	67	65	66	58	71	59	60	62	65	63	63	63	64
14 Tue	66	61	63	67	62	59	57	58	56	73	63	59	65	67	70	63	73	66	61	64	66	64	61	64	65
15 Wed	65	59	63	66	62	62	59	55	54	72	62	59	64	66	70	61	73	64	60	64	65	63	62	63	64
16 Thu	65	59	61	66	62	61	57	60	56	71	60	59	63	65	69	57	72	60	58	61	62	61	59	61	61
17 Fri	65	58	60	65	61	60	54	61	61	71	60	56	63	64	65	61	71	64	60	61	64	61	59	60	61
18 Sat	65	58	--	66	62	61	56	61	60	71	59	56	62	63	66	58	72	60	63	62	65	61	58	63	62
19 Sun	66	59	--	67	63	62	54	58	56	71	61	58	64	65	67	59	72	59	59	63	65	63	60	63	63
20 Mon	67	61	--	67	63	62	61	64	63	72	62	60	65	66	67	58	73	60	66	63	65	63	60	63	63
21 Tue	69	64	--	69	65	66	60	62	61	70	60	61	63	64	68	62	74	58	60	65	63	62	58	62	61
22 Wed	70	64	--	68	64	60	58	57	58	69	58	61	61	62	70	63	77	58	61	67	63	60		61	62
23 Thu	68	63	--	68	61	57	56	62	61	73	62	61	66	67	71	62	76	63	63	67	68	65	--	66	66
24 Fri	69	63	63	65	58	55	62	67	66	71	70	66	66	64	67	62	72	70	71	70	60	62	63	60	54
25 Sat	68	62	63	67	63	59	61	62	64	72	67	64	66	66	70	62	76	69	70	70	66	62	64	64	64
26 Sun	68	63	65	69	64	61	48	62	59	72	63	59	65	66	68	59	73	60	60	63	66	64	61	63	64
27 Mon	68	62	64	68	62	58	55	63	62	72	63	60	65	66	68	60	73	62	63	64	65	64	61	64	63
28 Tue	68	63	64	67	62	59	55	62	63	74	64	61	67	68	72	64	75	65	63	66	68	65	63	65	66



March	PDR1	PDR2	ESG1	ESG2	ESG3	ESG5	DEL1	WCH2	WCH3	WCH5	WCH6	ING1	ING2	ING3	ING6	ING8	LNX1	LNX2	LNX3	LNX4	ATH2	SLA1	SLA3	SLA5	SLA7
1 Wed	68	62	67	68	64	62	58	58	58	72	61	61	64	66	71	64	75	63	59	65	65	64	60	63	63
2 Thu	68	63	63	67	62	59	54	61	60	73	62	61	65	66	70	62	74	63	61	65	67	65	63	65	65
3 Fri	68	62	64	68	62	60	52	63	61	72	62	59	65	66	71	61	74	61	62	64	66	64	61	64	67
4 Sat	68	62	62	67	62	60	46	61	61	73	62	59	65	67	69	61	75	63	65	66	67	64	63	66	66
5 Sun	68	62	63	67	61	57	41	59	61	73	62	60	66	67	69	61	74	61	62	64	66	65	62	64	65
6 Mon	67	62	64	68	62	58	48	59	60	72	62	59	65	66	68	59	73	61	60	63	65	64	61	63	64
7 Tue	67	61	63	67	62	59	52	61	58	72	62	58	65	65	67	60	73	64	61	64	65	64	61	65	64
8 Wed	68	62	63	67	62	58	52	63	60	72	61	60	64	66	70	62	76	62	63	66	67	64	63	66	66
9 Thu	68	62	63	67	62	57	47	61	58	73	62	59	65	67	69	60	73	61	61	64	65	64	63	64	64
10 Fri	66	60	60	65	59	57	62	64	64	72	70	65	68	66	71	62	75	70	72	71	64	60	65	63	62
11 Sat	67	60	60	64	59	54	58	61	60	73	66	63	66	66	70	62	76	70	70	70	66	63	64	63	63
12 Sun	67	60	61	66	59	57	43	58	57	74	62	58	65	66	70	60	76	62	62	65	66	64	62	65	65
13 Mon	68	62	61	67	60	57	49	61	59	75	64	60	67	68	68	58	74	61	61	64	65	66	60	63	65
14 Tue	68	62	60	65	59	56	60	64	64	72	70	65	68	67	69	62	74	68	69	68	64	64	63	62	62
15 Wed	69	63	62	66	61	57	59	63	62	73	67	64	67	67	71	63	76	70	70	70	66	64	65	65	64
16 Thu	68	62	65	68	62	58	48	60	59	73	62	61	66	67	68	60	73	60	62	64	66	65	61	64	64
17 Fri	68	62	64	68	62	58	51	63	62	73	62	60	65	67	68	63	73	62	62	64	66	64	61	63	64
18 Sat	66	60	63	67	62	62	55	62	63	72	61	58	64	65	66	58	72	61	59	62	64	63	59	62	62
19 Sun	66	59	62	66	60	57	59	62	61	71	66	63	65	64	67	62	72	69	68	68	63	60	65	61	60
20 Mon	68	63	62	66	60	57	58	61	61	74	66	65	67	68	70	64	75	70	68	69	67	65	67	65	64
21 Tue	68	63	63	65	61	58	61	63	66	74	66	67	68	68	72	68	77	73	69	70	68	66	66	66	66
22 Wed	69	63	64	67	62	59	52	64	63	73	62	60	66	67	70	62	75	63	63	66	68	65	63	66	66
23 Thu	69	63	64	68	62	59	50	60	59	73	63	61	66	67	70	62	76	62	62	66	67	65	63	66	66
24 Fri	67	61	64	67	64	63	61	57	58	73	62	60	65	67	69	62	75	62	64	65	67	65	64	65	65
25 Sat	67	60	64	68	63	62	60	53	51	72	62	59	65	66	69	63	74	63	60	65	67	65	63	65	65
26 Sun	66	60	63	67	63	61	60	54	47	72	62	58	65	66	68	60	74	61	61	65	65	64	62	64	63
27 Mon	67	62	63	67	63	63	56	59	60	72	61	58	64	65	72	58	73	59	59	63	64	63	59	62	63
28 Tue	67	61	63	67	62	60	51	58	59	72	62	59	65	66	69	60	73	60	61	64	65	64	61	63	63
29 Wed	69	63	63	67	60	56	57	63	64	74	66	64	67	68	70	64	74	67	65	66	67	65	63	65	65
30 Thu	69	64	64	68	62	59	55	62	61	75	64	62	67	68	69	61	74	62	61	64	66	66	62	64	65
31 Fri	68	62	64	68	63	61	53	61	61	73	62	59	66	67	68	63	73	61	64	64	65	61	62	64	64



Runway Utilization Report  
**Summary of Runway Use (Average)**  
 Los Angeles International Airport

Period : 01/01/2023 to 03/31/2023  
 Airline : ALL  
 Aircraft : ALL

Time Period	Percent Daily Operations Per Runway								Average Operations	Runway Complex		Runway Flow		In Board	Out Board	
	06L	06R	07L	07R	24L	24R	25L	25R		South	North	West	East			
<b>Departures</b>																
<b>Total Hours</b>																
24 Hours	<1%	4%	6%	<1%	34%	<1%	4%	52%	735	62%	38%	90%	10%	96%	4%	
<b>CNEL Hours</b>																
0700 - 1900	<1%	4%	6%	<1%	38%	<1%	5%	47%	488	58%	42%	90%	10%	95%	5%	
1900 - 2200	0%	4%	5%	<1%	37%	0%	4%	50%	92	59%	41%	90%	10%	96%	4%	
2200 - 0700	<1%	3%	8%	<1%	19%	0%	2%	68%	155	78%	22%	89%	11%	98%	2%	
<b>Contra Hours</b>																
Midnight - 0630	<1%	3%	10%	<1%	11%	0%	3%	73%	78	86%	14%	87%	13%	97%	3%	
0630 - Midnight	<1%	4%	6%	<1%	37%	<1%	4%	49%	658	59%	41%	90%	10%	96%	4%	
<b>Arrivals</b>																
<b>Total Hours</b>																
24 Hours	5%	4%	<1%	5%	<1%	40%	45%	<1%	735	51%	49%	86%	14%	5%	95%	
<b>CNEL Hours</b>																
0700 - 1900	5%	<1%	<1%	5%	<1%	43%	46%	<1%	472	52%	48%	90%	10%	1%	99%	
1900 - 2200	4%	0%	0%	5%	<1%	43%	47%	<1%	132	53%	47%	91%	9%	<1%	99%	
2200 - 0700	5%	21%	1%	6%	<1%	25%	39%	2%	131	48%	52%	67%	33%	25%	75%	
<b>Contra Hours</b>																
Midnight - 0630	5%	54%	3%	7%	<1%	7%	19%	4%	51	33%	67%	31%	69%	62%	38%	
0630 - Midnight	5%	<1%	<1%	5%	<1%	42%	47%	<1%	685	53%	47%	90%	10%	<1%	99%	

All values are rounded to the nearest whole number.



Runway Utilization Report  
 Summary of Runway Flow (Average)  
 Los Angeles International Airport

Period: 01/01/2023 to 03/31/2023

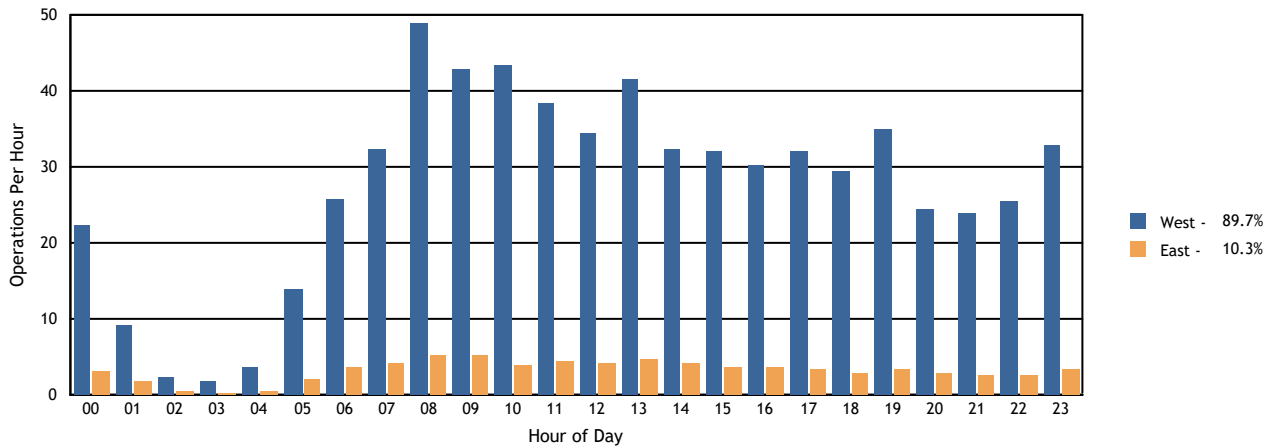
Airline : ALL

Aircraft : ALL

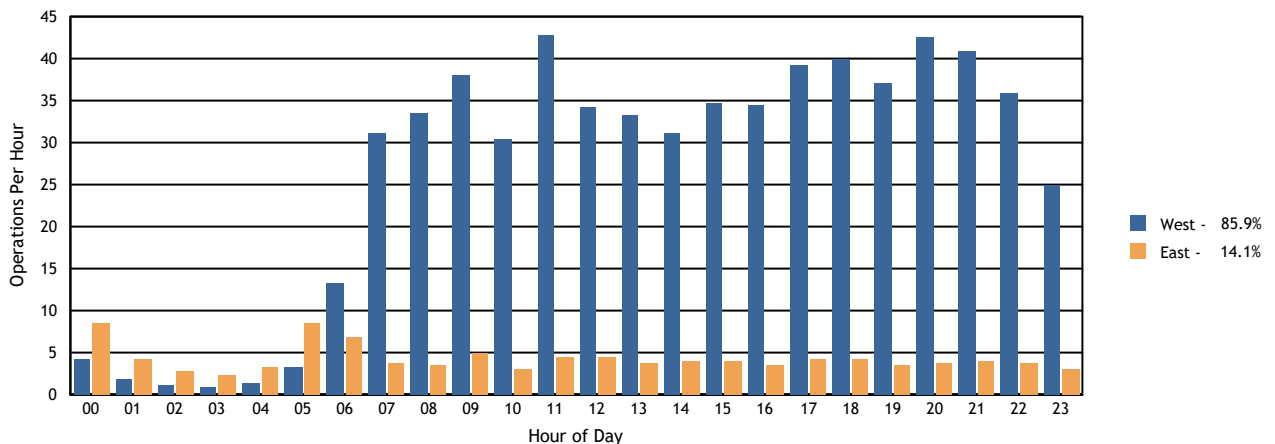
Time Period	Departures			Arrivals			Departures		Arrivals	
	West	East	Average	West	East	Average	West	East	West	East
<b>Total Hours</b>										
24 Hours	660	76	735	632	104	735	90%	10%	86%	14%
<b>CNEL Hours</b>										
0700-1900	439	49	488	423	49	472	90%	10%	90%	10%
1900-2200	83	9	92	121	12	132	90%	10%	91%	9%
2200-0700	138	17	155	87	44	131	89%	11%	67%	33%
<b>Contra Hours</b>										
Midnight - 0630	68	10	78	16	35	51	87%	13%	31%	69%
0630 - Midnight	592	66	658	616	69	685	90%	10%	90%	10%

All percentages are rounded to the nearest whole number.

Departures Per Hour by Operational Direction



Arrivals Per Hour by Operational Direction





## LAX Average Daily Runway Use By Aircraft Type - 24 Hours First Quarter 2023

Arrivals (Average Daily Operations)								
Aircraft Type	06L	06R	07L	07R	24L	24R	25L	25R
A19N	0.00	0.00	0.00	0.00	0.00	0.01	0.00	0.00
A20N	0.50	0.39	0.03	1.91	0.01	3.44	19.18	0.12
A21N	1.76	2.21	0.10	2.81	0.10	14.93	25.46	0.42
A306	0.00	0.17	0.06	0.02	0.00	0.00	0.39	0.06
A319	1.23	0.31	0.01	0.79	0.11	15.46	6.93	0.08
A320	1.77	1.09	0.14	3.36	0.07	13.46	27.90	0.46
A321	2.13	2.88	0.24	4.77	0.17	18.40	42.63	0.76
A332	0.38	0.71	0.02	0.21	0.04	3.23	1.83	0.02
A333	0.11	0.01	0.00	0.06	0.00	0.87	0.57	0.00
A359	0.59	0.58	0.01	0.23	0.00	4.63	2.33	0.06
A35K	0.28	0.07	0.00	0.08	0.00	2.59	0.42	0.00
A388	0.46	0.19	0.00	0.00	0.00	3.44	0.08	0.00
ASTR	0.01	0.00	0.00	0.00	0.00	0.02	0.06	0.00
B350	0.17	0.03	0.00	0.13	0.01	1.63	0.90	0.01
B38M	1.81	0.40	0.01	0.74	0.17	17.40	5.27	0.03
B39M	0.67	1.12	0.06	1.24	0.02	5.31	11.17	0.24
B733	0.00	0.01	0.00	0.00	0.00	0.00	0.01	0.00
B734	0.01	0.01	0.00	0.01	0.00	0.00	0.04	0.00
B735	0.01	0.00	0.00	0.00	0.00	0.00	0.02	0.00
B737	2.97	0.51	0.00	0.77	0.20	26.02	5.57	0.11
B738	3.11	1.52	0.07	3.26	0.33	28.98	25.60	0.52
B739	2.24	0.73	0.10	2.49	0.09	19.07	19.88	0.32
B744	0.12	0.59	0.04	0.68	0.00	0.32	6.38	0.07
B748	0.21	0.76	0.00	0.23	0.01	1.27	2.52	0.00
B752	0.72	0.64	0.03	0.96	0.02	5.94	8.37	0.20
B753	0.16	0.10	0.00	0.41	0.01	1.12	3.00	0.08
B762	0.03	0.12	0.02	0.11	0.00	0.04	1.54	0.01
B763	1.16	5.11	0.63	1.98	0.11	7.98	12.82	0.74
B764	0.01	0.00	0.00	0.01	0.00	0.23	0.14	0.00
B772	0.28	0.59	0.04	0.81	0.06	2.63	6.58	0.13
B77L	0.32	2.93	0.20	1.02	0.01	0.32	7.66	0.38
B77W	1.47	0.11	0.03	0.63	0.03	14.21	4.42	0.12
B788	0.43	0.73	0.04	0.89	0.01	2.72	6.70	0.13
B789	0.71	1.61	0.02	0.69	0.03	5.48	6.39	0.22
B78X	0.18	0.01	0.00	0.40	0.01	2.10	2.97	0.04
BCS1	0.11	0.00	0.01	0.08	0.00	0.33	0.11	0.00
BCS3	0.13	0.00	0.00	0.19	0.00	0.99	1.58	0.01
BE20	0.01	0.00	0.00	0.00	0.00	0.08	0.10	0.00
BE30	0.01	0.00	0.00	0.00	0.00	0.00	0.02	0.00
BE40	0.01	0.00	0.01	0.06	0.01	0.11	0.27	0.00

Departures (Average Daily Operations)								
Aircraft Type	06L	06R	07L	07R	24L	24R	25L	25R
A20N	0.00	0.78	1.68	0.00	3.72	0.00	0.17	19.27
A21N	0.00	0.77	4.07	0.00	12.00	0.02	0.29	30.72
A306	0.00	0.00	0.04	0.00	0.00	0.00	0.23	0.41
A319	0.00	0.59	1.36	0.00	18.11	0.02	0.02	4.84
A320	0.00	1.69	3.63	0.00	12.74	0.00	0.29	29.91
A321	0.00	2.73	4.53	0.00	11.41	0.01	0.46	52.87
A332	0.00	0.08	0.56	0.00	4.16	0.01	0.11	1.54
A333	0.00	0.07	0.07	0.00	0.89	0.00	0.03	0.56
A359	0.00	0.17	0.66	0.00	4.38	0.00	0.01	3.22
A35K	0.00	0.13	0.21	0.00	1.88	0.00	0.01	1.19
A388	0.00	0.22	0.00	0.23	3.52	0.00	0.18	0.00
ASTR	0.00	0.00	0.01	0.00	0.01	0.00	0.03	0.03
B350	0.00	0.20	0.07	0.00	0.33	0.01	0.50	1.76
B38M	0.00	1.23	1.43	0.00	19.42	0.03	0.02	3.68
B39M	0.00	0.61	1.44	0.00	3.42	0.00	0.11	14.28
B733	0.00	0.00	0.00	0.00	0.00	0.00	0.01	0.01
B734	0.00	0.00	0.00	0.00	0.00	0.00	0.01	0.07
B735	0.00	0.00	0.01	0.00	0.00	0.00	0.00	0.02
B737	0.01	2.33	1.67	0.00	27.51	0.06	0.34	4.26
B738	0.00	2.67	3.86	0.00	31.34	0.01	0.40	25.13
B739	0.01	1.82	3.00	0.00	16.26	0.02	0.22	23.71
B744	0.00	0.16	0.76	0.00	0.04	0.00	1.82	5.44
B748	0.00	0.23	0.00	0.16	1.27	0.00	3.22	0.11
B752	0.00	0.63	1.19	0.00	6.60	0.00	0.39	8.11
B753	0.00	0.18	0.46	0.00	0.46	0.00	0.02	3.76
B762	0.00	0.00	0.20	0.00	0.00	0.00	0.21	1.46
B763	0.00	0.79	2.49	0.01	12.69	0.02	2.83	11.70
B764	0.00	0.01	0.01	0.00	0.28	0.00	0.00	0.10
B772	0.00	0.29	0.86	0.00	1.38	0.00	0.06	8.56
B77L	0.00	0.27	1.07	0.01	0.03	0.00	3.70	7.79
B77W	0.00	0.46	1.69	0.00	6.58	0.00	0.02	12.31
B788	0.00	0.17	1.06	0.00	3.28	0.01	0.06	7.13
B789	0.00	0.29	1.18	0.00	3.41	0.01	0.03	10.23
B78X	0.00	0.24	0.31	0.00	0.99	0.00	0.03	4.13
BCS1	0.00	0.06	0.14	0.00	0.44	0.00	0.00	0.01
BCS3	0.00	0.20	0.12	0.00	0.78	0.00	0.02	1.79
BE20	0.00	0.01	0.00	0.00	0.04	0.00	0.00	0.12
BE30	0.00	0.00	0.00	0.00	0.01	0.00	0.00	0.00
BE40	0.00	0.02	0.04	0.00	0.01	0.00	0.18	0.22
BE99	0.00	0.04	0.01	0.00	0.01	0.00	0.00	0.47

LAX Noise Management

Source: LAX ANOMS, based on available FAA radar flight track data.

note: Aircraft Type for certain military operations may not be available through our data source, therefore will not be included in the report.

## LAX Average Daily Runway Use By Aircraft Type - 24 Hours First Quarter 2023

Arrivals (Average Daily Operations)								
Aircraft Type	06L	06R	07L	07R	24L	24R	25L	25R
BE99	0.02	0.00	0.00	0.01	0.02	0.33	0.14	0.00
BE9L	0.01	0.00	0.00	0.00	0.00	0.00	0.00	0.00
C150	0.00	0.00	0.00	0.00	0.00	0.00	0.01	0.00
C172	0.00	0.00	0.00	0.00	0.00	0.03	0.01	0.00
C182	0.00	0.00	0.00	0.00	0.00	0.00	0.01	0.00
C208	0.00	0.00	0.01	0.17	0.00	0.00	1.69	0.13
C25A	0.02	0.01	0.00	0.00	0.01	0.09	0.17	0.00
C25B	0.03	0.03	0.00	0.03	0.01	0.13	0.60	0.00
C25C	0.02	0.00	0.00	0.01	0.00	0.00	0.11	0.00
C25M	0.00	0.00	0.00	0.00	0.00	0.00	0.01	0.00
C500	0.00	0.00	0.00	0.00	0.00	0.00	0.01	0.00
C525	0.01	0.00	0.00	0.02	0.00	0.07	0.08	0.00
C550	0.02	0.00	0.00	0.00	0.00	0.01	0.03	0.00
C560	0.02	0.00	0.00	0.00	0.00	0.03	0.18	0.00
C56X	0.06	0.04	0.00	0.16	0.00	0.27	0.86	0.03
C650	0.01	0.00	0.00	0.02	0.00	0.00	0.02	0.00
C680	0.00	0.00	0.00	0.03	0.00	0.19	0.50	0.00
C68A	0.08	0.00	0.00	0.17	0.03	0.52	1.51	0.01
C700	0.01	0.00	0.00	0.06	0.00	0.09	0.32	0.00
C750	0.04	0.00	0.00	0.10	0.00	0.20	0.58	0.00
CL30	0.20	0.03	0.01	0.31	0.00	1.09	2.82	0.02
CL35	0.02	0.00	0.00	0.03	0.00	0.03	0.04	0.00
CL60	0.09	0.01	0.01	0.17	0.01	0.43	1.16	0.01
CRJ2	0.38	0.01	0.00	0.16	0.02	2.97	1.10	0.01
CRJ7	0.72	0.03	0.01	0.94	0.04	6.50	8.62	0.13
CRJ9	0.00	0.00	0.00	0.02	0.00	0.00	0.02	0.00
E135	0.07	0.01	0.02	0.12	0.00	0.42	1.63	0.00
E145	0.02	0.00	0.00	0.02	0.00	0.09	0.43	0.00
E170	4.30	0.09	0.02	2.00	0.14	40.87	19.29	0.37
E190	0.03	0.00	0.00	0.13	0.00	0.09	1.03	0.01
E35L	0.01	0.01	0.00	0.00	0.00	0.06	0.17	0.00
E50P	0.00	0.00	0.00	0.02	0.01	0.01	0.04	0.00
E545	0.01	0.00	0.00	0.06	0.00	0.21	0.49	0.01
E550	0.03	0.00	0.00	0.09	0.00	0.07	0.42	0.00
E55P	0.19	0.02	0.00	0.16	0.00	0.74	1.20	0.00
E75L	0.73	0.01	0.03	0.39	0.00	4.80	2.31	0.03
E75S	0.20	0.01	0.00	0.14	0.01	2.10	0.68	0.01
EA50	0.00	0.00	0.00	0.00	0.00	0.00	0.00	0.01
F2TH	0.03	0.00	0.00	0.08	0.00	0.21	0.51	0.00
F900	0.01	0.02	0.00	0.07	0.01	0.08	0.40	0.00

Departures (Average Daily Operations)								
Aircraft Type	06L	06R	07L	07R	24L	24R	25L	25R
BE9L	0.00	0.01	0.00	0.00	0.00	0.00	0.00	0.00
C17	0.00	0.00	0.00	0.00	0.02	0.00	0.00	0.00
C172	0.00	0.00	0.01	0.00	0.02	0.00	0.00	0.02
C182	0.00	0.00	0.00	0.00	0.00	0.00	0.01	0.00
C208	0.00	0.00	0.18	0.00	0.00	0.00	0.01	1.80
C25A	0.00	0.03	0.02	0.00	0.01	0.00	0.06	0.18
C25B	0.00	0.06	0.03	0.00	0.02	0.00	0.13	0.60
C25C	0.00	0.01	0.01	0.00	0.01	0.00	0.02	0.09
C25M	0.00	0.00	0.00	0.00	0.01	0.00	0.00	0.00
C525	0.00	0.01	0.02	0.00	0.01	0.00	0.01	0.12
C550	0.00	0.00	0.03	0.00	0.00	0.00	0.00	0.03
C560	0.00	0.00	0.01	0.00	0.00	0.00	0.09	0.13
C56X	0.00	0.06	0.10	0.00	0.02	0.00	0.41	0.81
C650	0.00	0.00	0.01	0.00	0.00	0.00	0.02	0.02
C680	0.00	0.01	0.03	0.00	0.02	0.00	0.22	0.44
C68A	0.00	0.14	0.07	0.02	0.08	0.00	0.88	1.14
C700	0.00	0.04	0.03	0.00	0.01	0.00	0.14	0.26
C750	0.00	0.04	0.08	0.00	0.01	0.00	0.36	0.39
CL30	0.00	0.19	0.28	0.00	0.14	0.00	1.34	2.51
CL35	0.00	0.01	0.02	0.00	0.00	0.00	0.04	0.03
CL60	0.00	0.06	0.13	0.00	0.07	0.00	0.53	1.04
CRJ2	0.00	0.37	0.14	0.00	1.16	0.00	0.14	2.82
CRJ7	0.00	0.97	0.59	0.00	3.70	0.01	0.04	11.71
CRJ9	0.00	0.01	0.01	0.00	0.02	0.00	0.00	0.00
E135	0.00	0.13	0.03	0.00	0.00	0.00	0.76	1.36
E145	0.00	0.02	0.01	0.00	0.00	0.00	0.10	0.43
E170	0.00	3.37	2.93	0.00	25.14	0.07	0.12	35.47
E190	0.00	0.08	0.10	0.00	0.84	0.00	0.04	0.21
E35L	0.00	0.01	0.02	0.00	0.03	0.00	0.11	0.06
E50P	0.00	0.00	0.01	0.00	0.00	0.00	0.01	0.07
E545	0.00	0.02	0.02	0.00	0.01	0.00	0.24	0.48
E550	0.00	0.07	0.03	0.00	0.01	0.00	0.19	0.31
E55P	0.00	0.17	0.22	0.02	0.08	0.00	0.80	1.01
E75L	0.00	0.76	0.38	0.00	4.07	0.02	0.01	3.11
E75S	0.00	0.13	0.18	0.00	2.81	0.00	0.00	0.06
EA50	0.00	0.00	0.00	0.00	0.00	0.00	0.00	0.01
F2TH	0.00	0.04	0.08	0.00	0.03	0.00	0.22	0.43
F900	0.00	0.04	0.02	0.00	0.01	0.00	0.20	0.31
FA50	0.00	0.00	0.03	0.00	0.00	0.00	0.04	0.11
FA7X	0.00	0.02	0.03	0.00	0.02	0.00	0.28	0.33

LAX Noise Management

Source: LAX ANOMS, based on available FAA radar flight track data.

note: Aircraft Type for certain military operations may not be available through our data source, therefore will not be included in the report.

## LAX Average Daily Runway Use By Aircraft Type - 24 Hours First Quarter 2023

Arrivals (Average Daily Operations)								
Aircraft Type	06L	06R	07L	07R	24L	24R	25L	25R
FA50	0.01	0.00	0.01	0.01	0.00	0.02	0.13	0.00
FA7X	0.04	0.04	0.00	0.07	0.00	0.21	0.36	0.01
FA8X	0.00	0.00	0.00	0.00	0.00	0.03	0.02	0.00
G150	0.02	0.00	0.00	0.02	0.00	0.02	0.06	0.00
G280	0.03	0.01	0.00	0.07	0.00	0.04	0.37	0.01
GA5C	0.00	0.00	0.00	0.01	0.00	0.00	0.10	0.00
GA6C	0.03	0.00	0.00	0.01	0.00	0.08	0.21	0.00
GALX	0.01	0.01	0.00	0.00	0.00	0.06	0.23	0.00
GL5T	0.02	0.01	0.00	0.04	0.00	0.07	0.27	0.01
GL7T	0.00	0.00	0.00	0.02	0.00	0.22	0.34	0.00
GLEX	0.04	0.02	0.00	0.14	0.01	0.68	1.34	0.00
GLF4	0.10	0.03	0.01	0.21	0.01	0.40	1.93	0.00
GLF5	0.06	0.09	0.00	0.22	0.01	0.53	1.70	0.02
GLF6	0.07	0.04	0.00	0.16	0.00	0.56	1.34	0.06
H25B	0.06	0.03	0.00	0.10	0.00	0.17	0.81	0.02
HA4T	0.00	0.01	0.00	0.00	0.00	0.00	0.01	0.00
HDJT	0.00	0.00	0.00	0.02	0.00	0.04	0.11	0.00
J328	0.02	0.01	0.00	0.04	0.00	0.06	0.13	0.00
LJ31	0.00	0.00	0.00	0.00	0.00	0.00	0.03	0.00
LJ35	0.01	0.00	0.01	0.01	0.00	0.02	0.08	0.00
LJ40	0.00	0.00	0.00	0.00	0.00	0.00	0.02	0.00
LJ45	0.06	0.01	0.00	0.06	0.00	0.10	0.48	0.00
LJ60	0.01	0.00	0.00	0.06	0.00	0.06	0.28	0.00
LJ75	0.00	0.00	0.00	0.01	0.00	0.00	0.10	0.00
M600	0.00	0.00	0.00	0.01	0.00	0.00	0.00	0.00
MD11	0.02	0.61	0.07	0.24	0.00	0.02	1.76	0.13
PA46	0.00	0.00	0.00	0.01	0.00	0.02	0.00	0.00
PC12	0.11	0.01	0.00	0.06	0.02	0.50	0.34	0.02
PC24	0.00	0.00	0.00	0.00	0.00	0.00	0.02	0.00
PRM1	0.00	0.01	0.00	0.01	0.00	0.01	0.16	0.00
S22T	0.00	0.00	0.00	0.00	0.00	0.03	0.00	0.00
SR20	0.00	0.00	0.00	0.00	0.00	0.01	0.00	0.00
A124	0.00	0.00	0.00	0.00	0.00	0.00	0.01	0.00
GLF3	0.00	0.00	0.00	0.01	0.00	0.00	0.00	0.00
SF50	0.01	0.00	0.00	0.00	0.00	0.03	0.09	0.00
LJ55	0.00	0.00	0.00	0.00	0.00	0.01	0.01	0.00
TBM7	0.00	0.00	0.00	0.00	0.00	0.01	0.03	0.00
BE35	0.00	0.00	0.00	0.00	0.00	0.01	0.01	0.00
SB20	0.00	0.00	0.00	0.01	0.00	0.02	0.00	0.00
A339	0.12	0.14	0.00	0.02	0.01	1.18	0.29	0.01

Departures (Average Daily Operations)								
Aircraft Type	06L	06R	07L	07R	24L	24R	25L	25R
FA8X	0.00	0.00	0.01	0.00	0.00	0.00	0.03	0.03
G150	0.00	0.01	0.03	0.00	0.01	0.00	0.02	0.04
G280	0.00	0.01	0.04	0.00	0.00	0.00	0.22	0.26
GA5C	0.00	0.00	0.00	0.00	0.00	0.00	0.03	0.08
GA6C	0.00	0.02	0.04	0.00	0.03	0.00	0.07	0.19
GALX	0.00	0.01	0.03	0.00	0.00	0.00	0.13	0.14
GL5T	0.00	0.02	0.04	0.00	0.00	0.00	0.12	0.21
GL7T	0.00	0.02	0.07	0.00	0.00	0.00	0.14	0.30
GLEX	0.00	0.11	0.10	0.00	0.10	0.00	0.76	1.11
GLF4	0.00	0.18	0.16	0.00	0.03	0.00	0.92	1.38
GLF5	0.00	0.11	0.08	0.00	0.01	0.00	0.97	1.21
GLF6	0.00	0.16	0.07	0.01	0.04	0.00	0.59	1.17
H25B	0.00	0.01	0.09	0.00	0.02	0.00	0.43	0.62
HA4T	0.00	0.01	0.00	0.00	0.00	0.00	0.00	0.01
HDJT	0.00	0.03	0.00	0.00	0.00	0.00	0.02	0.12
J328	0.00	0.03	0.03	0.00	0.00	0.00	0.07	0.14
LJ31	0.00	0.00	0.00	0.00	0.00	0.00	0.00	0.03
LJ35	0.00	0.01	0.01	0.00	0.00	0.00	0.06	0.06
LJ40	0.00	0.00	0.00	0.00	0.00	0.00	0.00	0.01
LJ45	0.00	0.02	0.08	0.00	0.02	0.00	0.16	0.43
LJ60	0.00	0.03	0.03	0.00	0.00	0.00	0.10	0.23
LJ75	0.00	0.00	0.01	0.00	0.00	0.00	0.02	0.08
M600	0.00	0.00	0.00	0.00	0.01	0.00	0.00	0.00
MD11	0.01	0.08	0.20	0.00	0.00	0.00	1.06	1.57
PA46	0.00	0.01	0.00	0.00	0.00	0.00	0.00	0.02
PC12	0.01	0.11	0.01	0.00	0.23	0.01	0.08	0.61
PC24	0.00	0.00	0.00	0.00	0.00	0.00	0.00	0.02
PRM1	0.00	0.01	0.00	0.00	0.01	0.00	0.03	0.13
S22T	0.00	0.00	0.00	0.00	0.00	0.00	0.00	0.03
SR20	0.00	0.00	0.00	0.00	0.01	0.00	0.00	0.00
A124	0.00	0.00	0.00	0.00	0.00	0.00	0.01	0.00
GLF3	0.00	0.00	0.01	0.00	0.00	0.00	0.00	0.00
SF50	0.00	0.00	0.00	0.00	0.00	0.00	0.01	0.12
LJ55	0.00	0.00	0.00	0.00	0.00	0.00	0.02	0.00
TBM7	0.00	0.00	0.00	0.00	0.00	0.00	0.00	0.04
BE35	0.00	0.00	0.00	0.00	0.00	0.00	0.00	0.01
SB20	0.00	0.01	0.00	0.00	0.00	0.00	0.01	0.01
A339	0.00	0.04	0.11	0.00	1.17	0.00	0.14	0.32
EPIC	0.00	0.00	0.00	0.00	0.00	0.00	0.00	0.06
T210	0.00	0.00	0.00	0.00	0.00	0.00	0.00	0.01

LAX Noise Management

Source: LAX ANOMS, based on available FAA radar flight track data.

note: Aircraft Type for certain military operations may not be available through our data source, therefore will not be included in the report.

**LAX Average Daily Runway Use By Aircraft Type - 24 Hours  
First Quarter 2023**

<b>Arrivals</b> (Average Daily Operations)								
Aircraft Type	06L	06R	07L	07R	24L	24R	25L	25R
EPIC	0.00	0.01	0.00	0.00	0.00	0.00	0.04	0.00
T210	0.00	0.00	0.00	0.00	0.00	0.00	0.01	0.00
M20P	0.00	0.00	0.00	0.00	0.00	0.01	0.00	0.00
DA62	0.01	0.00	0.00	0.00	0.00	0.00	0.00	0.00

<b>Departures</b> (Average Daily Operations)								
Aircraft Type	06L	06R	07L	07R	24L	24R	25L	25R
M20P	0.00	0.00	0.00	0.00	0.01	0.00	0.00	0.00
DA62	0.00	0.01	0.00	0.00	0.00	0.00	0.00	0.00

LAX Noise Management

Source: LAX ANOMS, based on available FAA radar flight track data.

note: Aircraft Type for certain military operations may not be available through our data source, therefore will not be included in the report.

## LAX Average Daily Runway Use By Aircraft Type - Night Time (10pm - 7am) First Quarter 2023

Arrivals (Average Daily Operations)								
Aircraft Type	06L	06R	07L	07R	24L	24R	25L	25R
A20N	0.20	0.39	0.01	0.42	0.01	0.54	4.63	0.02
A21N	0.64	2.21	0.09	0.72	0.04	4.02	5.72	0.14
A306	0.00	0.17	0.06	0.02	0.00	0.00	0.19	0.06
A319	0.08	0.31	0.01	0.14	0.02	0.74	1.22	0.01
A320	0.28	1.09	0.07	0.78	0.01	1.53	5.41	0.08
A321	0.74	2.88	0.18	0.91	0.06	3.26	7.44	0.27
A332	0.12	0.71	0.02	0.08	0.03	0.92	0.39	0.01
A333	0.00	0.01	0.00	0.01	0.00	0.00	0.06	0.00
A359	0.08	0.58	0.01	0.02	0.00	0.11	0.23	0.02
A35K	0.01	0.07	0.00	0.01	0.00	0.17	0.01	0.00
A388	0.10	0.19	0.00	0.00	0.00	0.23	0.01	0.00
ASTR	0.00	0.00	0.00	0.00	0.00	0.00	0.01	0.00
B350	0.00	0.03	0.00	0.01	0.00	0.24	0.09	0.00
B38M	0.38	0.40	0.00	0.08	0.07	3.31	0.74	0.00
B39M	0.18	1.12	0.03	0.32	0.01	0.51	2.53	0.11
B737	0.72	0.51	0.00	0.04	0.03	4.96	0.69	0.00
B738	0.50	1.52	0.06	0.46	0.11	3.78	3.00	0.10
B739	0.39	0.72	0.03	0.32	0.02	1.86	2.48	0.01
B744	0.03	0.59	0.04	0.19	0.00	0.04	0.99	0.03
B748	0.04	0.74	0.00	0.10	0.01	0.06	0.66	0.00
B752	0.26	0.64	0.02	0.24	0.00	1.42	1.04	0.06
B753	0.02	0.10	0.00	0.08	0.00	0.07	0.53	0.02
B762	0.02	0.12	0.02	0.08	0.00	0.04	1.20	0.01
B763	0.53	5.10	0.62	0.81	0.11	1.39	3.87	0.62
B764	0.01	0.00	0.00	0.00	0.00	0.02	0.01	0.00
B772	0.06	0.59	0.04	0.13	0.01	0.12	0.51	0.06
B77L	0.13	2.93	0.18	0.59	0.01	0.14	1.71	0.30
B77W	0.01	0.11	0.03	0.01	0.00	0.04	0.03	0.03
B788	0.16	0.73	0.04	0.17	0.01	0.57	0.86	0.07
B789	0.12	1.61	0.02	0.31	0.02	0.36	1.17	0.12
B78X	0.01	0.01	0.00	0.01	0.00	0.06	0.10	0.01
BCS1	0.01	0.00	0.00	0.00	0.00	0.01	0.00	0.00
BCS3	0.04	0.00	0.00	0.03	0.00	0.09	0.09	0.00
BE20	0.00	0.00	0.00	0.00	0.00	0.00	0.01	0.00
BE30	0.01	0.00	0.00	0.00	0.00	0.00	0.01	0.00
BE40	0.00	0.00	0.00	0.00	0.00	0.00	0.02	0.00
BE99	0.02	0.00	0.00	0.01	0.02	0.33	0.14	0.00
C208	0.00	0.00	0.00	0.01	0.00	0.00	0.03	0.00
C25A	0.00	0.01	0.00	0.00	0.00	0.00	0.01	0.00
C25B	0.00	0.03	0.00	0.00	0.00	0.00	0.03	0.00

Departures (Average Daily Operations)								
Aircraft Type	06L	06R	07L	07R	24L	24R	25L	25R
A20N	0.00	0.18	0.70	0.00	1.48	0.00	0.03	6.21
A21N	0.00	0.16	1.16	0.00	1.21	0.00	0.13	10.18
A306	0.00	0.00	0.01	0.00	0.00	0.00	0.01	0.24
A319	0.00	0.03	0.22	0.00	1.41	0.00	0.00	1.30
A320	0.00	0.22	0.97	0.00	1.63	0.00	0.09	7.80
A321	0.00	0.73	1.31	0.00	2.98	0.00	0.10	14.01
A332	0.00	0.00	0.07	0.00	0.08	0.00	0.02	0.32
A333	0.00	0.00	0.00	0.00	0.04	0.00	0.00	0.04
A359	0.00	0.01	0.39	0.00	1.70	0.00	0.01	2.11
A35K	0.00	0.07	0.02	0.00	0.90	0.00	0.00	0.00
A388	0.00	0.09	0.00	0.08	1.20	0.00	0.12	0.00
B350	0.00	0.06	0.02	0.00	0.02	0.00	0.01	0.59
B38M	0.00	0.23	0.07	0.00	1.37	0.00	0.00	0.91
B39M	0.00	0.21	0.51	0.00	0.63	0.00	0.08	5.48
B735	0.00	0.00	0.00	0.00	0.00	0.00	0.00	0.01
B737	0.00	0.52	0.51	0.00	3.08	0.00	0.04	3.41
B738	0.00	0.53	0.68	0.00	2.46	0.00	0.09	5.90
B739	0.00	0.24	0.62	0.00	2.04	0.00	0.03	4.79
B744	0.00	0.07	0.44	0.00	0.00	0.00	0.11	3.46
B748	0.00	0.02	0.00	0.11	0.06	0.00	1.49	0.11
B752	0.00	0.13	0.40	0.00	1.36	0.00	0.06	2.90
B753	0.00	0.02	0.17	0.00	0.01	0.00	0.00	1.21
B762	0.00	0.00	0.16	0.00	0.00	0.00	0.10	1.30
B763	0.00	0.30	1.00	0.01	1.97	0.00	0.27	7.87
B764	0.00	0.00	0.00	0.00	0.02	0.00	0.00	0.04
B772	0.00	0.06	0.36	0.00	0.43	0.00	0.01	2.64
B77L	0.00	0.01	0.46	0.00	0.00	0.00	0.19	3.43
B77W	0.00	0.02	0.71	0.00	0.89	0.00	0.02	5.14
B788	0.00	0.04	0.22	0.00	0.08	0.00	0.03	1.81
B789	0.00	0.00	0.51	0.00	0.41	0.00	0.00	3.11
B78X	0.00	0.02	0.03	0.00	0.00	0.00	0.00	0.60
BCS1	0.00	0.01	0.02	0.00	0.02	0.00	0.00	0.01
BCS3	0.00	0.03	0.00	0.00	0.23	0.00	0.00	0.04
BE20	0.00	0.00	0.00	0.00	0.00	0.00	0.00	0.01
BE40	0.00	0.00	0.00	0.00	0.00	0.00	0.00	0.04
BE99	0.00	0.04	0.01	0.00	0.01	0.00	0.00	0.46
C172	0.00	0.00	0.00	0.00	0.01	0.00	0.00	0.00
C208	0.00	0.00	0.01	0.00	0.00	0.00	0.00	0.02
C25A	0.00	0.00	0.01	0.00	0.00	0.00	0.00	0.02
C25B	0.00	0.01	0.00	0.00	0.00	0.00	0.00	0.07

LAX Noise Management

Source: LAX ANOMS, based on available FAA radar flight track data.

note: Aircraft Type for certain military operations may not be available through our data source, therefore will not be included in the report.

**LAX Average Daily Runway Use By Aircraft Type - Night Time (10pm - 7am)  
First Quarter 2023**

Arrivals (Average Daily Operations)								
Aircraft Type	06L	06R	07L	07R	24L	24R	25L	25R
C56X	0.00	0.04	0.00	0.01	0.00	0.01	0.03	0.00
C680	0.00	0.00	0.00	0.00	0.00	0.00	0.02	0.00
C68A	0.00	0.00	0.00	0.01	0.00	0.01	0.04	0.00
C700	0.00	0.00	0.00	0.01	0.00	0.00	0.01	0.00
C750	0.00	0.00	0.00	0.02	0.00	0.01	0.00	0.00
CL30	0.00	0.03	0.00	0.02	0.00	0.02	0.14	0.00
CL60	0.00	0.01	0.01	0.01	0.01	0.00	0.02	0.00
CRJ2	0.03	0.01	0.00	0.00	0.01	0.14	0.03	0.00
CRJ7	0.04	0.03	0.00	0.06	0.00	0.30	0.24	0.01
E135	0.01	0.01	0.00	0.01	0.00	0.01	0.01	0.00
E145	0.00	0.00	0.00	0.00	0.00	0.00	0.02	0.00
E170	0.14	0.09	0.00	0.19	0.01	1.19	0.98	0.01
E190	0.00	0.00	0.00	0.00	0.00	0.00	0.01	0.00
E35L	0.00	0.01	0.00	0.00	0.00	0.00	0.00	0.00
E545	0.00	0.00	0.00	0.00	0.00	0.01	0.00	0.00
E550	0.00	0.00	0.00	0.00	0.00	0.00	0.02	0.00
E55P	0.00	0.02	0.00	0.01	0.00	0.01	0.06	0.00
E75L	0.07	0.01	0.01	0.02	0.00	0.16	0.11	0.00
E75S	0.01	0.01	0.00	0.01	0.01	0.00	0.00	0.00
F2TH	0.00	0.00	0.00	0.00	0.00	0.00	0.04	0.00
F900	0.00	0.02	0.00	0.00	0.00	0.01	0.03	0.00
FA7X	0.02	0.04	0.00	0.01	0.00	0.01	0.02	0.00
G150	0.00	0.00	0.00	0.00	0.00	0.01	0.00	0.00
G280	0.00	0.01	0.00	0.00	0.00	0.00	0.01	0.00
GA5C	0.00	0.00	0.00	0.00	0.00	0.00	0.01	0.00
GA6C	0.00	0.00	0.00	0.00	0.00	0.00	0.02	0.00
GALX	0.00	0.01	0.00	0.00	0.00	0.00	0.04	0.00
GL5T	0.00	0.01	0.00	0.00	0.00	0.00	0.02	0.00
GL7T	0.00	0.00	0.00	0.00	0.00	0.01	0.03	0.00
GLEX	0.00	0.02	0.00	0.00	0.01	0.03	0.09	0.00
GLF4	0.00	0.03	0.00	0.02	0.00	0.02	0.11	0.00
GLF5	0.00	0.09	0.00	0.04	0.00	0.02	0.22	0.00
GLF6	0.00	0.04	0.00	0.02	0.00	0.01	0.06	0.02
H25B	0.00	0.03	0.00	0.00	0.00	0.01	0.02	0.01
J328	0.00	0.01	0.00	0.01	0.00	0.00	0.06	0.00
LJ35	0.00	0.00	0.01	0.00	0.00	0.00	0.00	0.00
LJ45	0.00	0.01	0.00	0.00	0.00	0.01	0.02	0.00
MD11	0.02	0.61	0.06	0.11	0.00	0.00	0.38	0.13
PC12	0.01	0.01	0.00	0.02	0.02	0.04	0.07	0.00
A124	0.00	0.00	0.00	0.00	0.00	0.00	0.01	0.00
B734	0.01	0.01	0.00	0.01	0.00	0.00	0.00	0.00

Departures (Average Daily Operations)								
Aircraft Type	06L	06R	07L	07R	24L	24R	25L	25R
C56X	0.00	0.00	0.00	0.00	0.01	0.00	0.01	0.07
C680	0.00	0.00	0.01	0.00	0.00	0.00	0.00	0.04
C68A	0.00	0.01	0.00	0.01	0.00	0.00	0.01	0.14
C700	0.00	0.02	0.00	0.00	0.00	0.00	0.00	0.00
C750	0.00	0.01	0.01	0.00	0.00	0.00	0.01	0.03
CL30	0.00	0.01	0.01	0.00	0.00	0.00	0.01	0.20
CL35	0.00	0.00	0.01	0.00	0.00	0.00	0.00	0.01
CL60	0.00	0.00	0.02	0.00	0.00	0.00	0.00	0.09
CRJ2	0.00	0.01	0.01	0.00	0.00	0.00	0.00	0.09
CRJ7	0.00	0.01	0.07	0.00	0.11	0.00	0.00	0.94
E135	0.00	0.03	0.01	0.00	0.00	0.00	0.00	0.07
E145	0.00	0.00	0.00	0.00	0.00	0.00	0.01	0.02
E170	0.00	0.16	0.33	0.00	0.88	0.00	0.00	2.54
E190	0.00	0.01	0.00	0.00	0.01	0.00	0.00	0.02
E545	0.00	0.00	0.00	0.00	0.00	0.00	0.00	0.04
E550	0.00	0.01	0.00	0.00	0.00	0.00	0.00	0.07
E55P	0.00	0.02	0.06	0.00	0.00	0.00	0.00	0.18
E75L	0.00	0.02	0.09	0.00	0.29	0.00	0.00	0.64
E75S	0.00	0.00	0.00	0.00	0.09	0.00	0.00	0.00
F2TH	0.00	0.01	0.00	0.00	0.00	0.00	0.00	0.09
F900	0.00	0.01	0.00	0.00	0.00	0.00	0.00	0.03
FA7X	0.00	0.00	0.00	0.00	0.00	0.00	0.01	0.08
FA8X	0.00	0.00	0.00	0.00	0.00	0.00	0.00	0.01
G280	0.00	0.00	0.01	0.00	0.00	0.00	0.00	0.02
GA5C	0.00	0.00	0.00	0.00	0.00	0.00	0.00	0.01
GA6C	0.00	0.00	0.01	0.00	0.00	0.00	0.00	0.01
GALX	0.00	0.00	0.02	0.00	0.00	0.00	0.00	0.04
GL5T	0.00	0.00	0.00	0.00	0.00	0.00	0.00	0.04
GL7T	0.00	0.00	0.01	0.00	0.00	0.00	0.00	0.07
GLEX	0.00	0.02	0.01	0.00	0.00	0.00	0.00	0.23
GLF4	0.00	0.03	0.02	0.00	0.00	0.00	0.00	0.18
GLF5	0.00	0.00	0.01	0.00	0.00	0.00	0.00	0.18
GLF6	0.00	0.00	0.02	0.00	0.00	0.00	0.01	0.22
H25B	0.00	0.00	0.02	0.00	0.00	0.00	0.00	0.08
J328	0.00	0.00	0.00	0.00	0.00	0.00	0.00	0.04
LJ35	0.00	0.00	0.01	0.00	0.00	0.00	0.00	0.01
LJ45	0.00	0.00	0.00	0.00	0.00	0.00	0.00	0.06
MD11	0.00	0.04	0.07	0.00	0.00	0.00	0.01	0.63
PC12	0.01	0.01	0.00	0.00	0.00	0.00	0.01	0.13
A124	0.00	0.00	0.00	0.00	0.00	0.00	0.01	0.00
B734	0.00	0.00	0.00	0.00	0.00	0.00	0.00	0.04

LAX Noise Management

Source: LAX ANOMS, based on available FAA radar flight track data.

note: Aircraft Type for certain military operations may not be available through our data source, therefore will not be included in the report.

**LAX Average Daily Runway Use By Aircraft Type - Night Time (10pm - 7am)  
First Quarter 2023**

<b>Arrivals</b> (Average Daily Operations)								
Aircraft Type	06L	06R	07L	07R	24L	24R	25L	25R
FA50	0.00	0.00	0.01	0.00	0.00	0.00	0.00	0.00
PRM1	0.00	0.01	0.00	0.00	0.00	0.00	0.01	0.00
E50P	0.00	0.00	0.00	0.00	0.00	0.00	0.01	0.00
C650	0.00	0.00	0.00	0.00	0.00	0.00	0.01	0.00
B733	0.00	0.01	0.00	0.00	0.00	0.00	0.00	0.00
C550	0.00	0.00	0.00	0.00	0.00	0.00	0.01	0.00

<b>Departures</b> (Average Daily Operations)								
Aircraft Type	06L	06R	07L	07R	24L	24R	25L	25R
C25C	0.00	0.00	0.00	0.00	0.00	0.00	0.00	0.03
FA50	0.00	0.00	0.00	0.00	0.00	0.00	0.00	0.01
PRM1	0.00	0.01	0.00	0.00	0.00	0.00	0.00	0.02
E50P	0.00	0.00	0.01	0.00	0.00	0.00	0.00	0.01
HDJT	0.00	0.00	0.00	0.00	0.00	0.00	0.00	0.01
SB20	0.00	0.00	0.00	0.00	0.00	0.00	0.00	0.01
C550	0.00	0.00	0.01	0.00	0.00	0.00	0.00	0.00
A339	0.00	0.00	0.00	0.00	0.01	0.00	0.00	0.00
EPIC	0.00	0.00	0.00	0.00	0.00	0.00	0.00	0.02
SF50	0.00	0.00	0.00	0.00	0.00	0.00	0.00	0.02
EA50	0.00	0.00	0.00	0.00	0.00	0.00	0.00	0.01

LAX Noise Management

Source: LAX ANOMS, based on available FAA radar flight track data.

note: Aircraft Type for certain military operations may not be available through our data source, therefore will not be included in the report.

## LAX Average Daily Runway Use By Aircraft Group - 24 Hours First Quarter 2023

Arrivals (Average Daily Operations)								
Aircraft Group	06L	06R	07L	07R	24L	24R	25L	25R
Small Jet	7.99	0.70	0.16	6.72	0.36	65.82	57.38	0.79
Small Narrow-Body Jet	14.60	6.10	0.43	14.97	1.00	130.56	124.29	1.91
Large Narrow-Body Jet	4.77	5.83	0.38	8.94	0.30	40.40	79.46	1.46
Small Wide-Body Jet	1.20	5.40	0.71	2.12	0.11	8.26	14.90	0.81
Large Wide-Body Jet	5.68	9.64	0.49	6.20	0.22	45.02	50.90	1.32
Non-Jet	0.34	0.06	0.01	0.41	0.06	2.70	3.33	0.17
Military*	0.00	0.00	0.00	0.00	0.00	0.00	0.00	0.00

Departures (Average Daily Operations)								
Aircraft Group	06L	06R	07L	07R	24L	24R	25L	25R
Small Jet	0.00	7.64	6.64	0.06	37.83	0.10	12.68	74.24
Small Narrow-Body Jet	0.02	12.06	18.44	0.00	134.59	0.14	1.67	127.19
Large Narrow-Body Jet	0.00	4.31	10.24	0.00	30.47	0.03	1.16	95.46
Small Wide-Body Jet	0.00	0.80	2.74	0.01	12.97	0.02	3.28	13.67
Large Wide-Body Jet	0.01	2.89	8.71	0.40	32.97	0.03	10.50	64.11
Non-Jet	0.01	0.41	0.28	0.00	0.69	0.02	0.62	4.99
Military*	0.00	0.00	0.00	0.00	0.02	0.00	0.00	0.00

LAX Noise Management

Source: LAX ANOMS, based on available FAA radar flight track data.

\* Aircraft Type for certain military operations may not be available through our data source, therefore will not be included in the report.



**LAX Average Daily Runway Use By Aircraft Group - Night Time (10pm - 7am)  
First Quarter 2023**

<b>Arrivals</b> (Average Daily Operations)								
<b>Aircraft Group</b>	<b>06L</b>	<b>06R</b>	<b>07L</b>	<b>07R</b>	<b>24L</b>	<b>24R</b>	<b>25L</b>	<b>25R</b>
Small Jet	0.33	0.70	0.04	0.50	0.06	2.03	2.71	0.07
Small Narrow-Body Jet	2.79	6.09	0.21	2.61	0.29	17.33	20.81	0.33
Large Narrow-Body Jet	1.67	5.83	0.29	1.96	0.10	8.77	14.74	0.49
Small Wide-Body Jet	0.57	5.39	0.70	0.91	0.11	1.46	5.27	0.69
Large Wide-Body Jet	0.96	9.63	0.46	1.76	0.10	3.03	7.18	0.79
Non-Jet	0.04	0.06	0.00	0.06	0.04	0.62	0.37	0.00
Military*	0.00	0.00	0.00	0.00	0.00	0.00	0.00	0.00

<b>Departures</b> (Average Daily Operations)								
<b>Aircraft Group</b>	<b>06L</b>	<b>06R</b>	<b>07L</b>	<b>07R</b>	<b>24L</b>	<b>24R</b>	<b>25L</b>	<b>25R</b>
Small Jet	0.00	0.42	0.82	0.01	1.38	0.00	0.08	6.84
Small Narrow-Body Jet	0.00	2.23	4.30	0.00	14.37	0.00	0.37	35.93
Large Narrow-Body Jet	0.00	1.04	3.03	0.00	5.56	0.00	0.29	28.30
Small Wide-Body Jet	0.00	0.30	1.17	0.01	1.99	0.00	0.38	9.46
Large Wide-Body Jet	0.00	0.46	3.28	0.19	5.80	0.00	2.03	23.42
Non-Jet	0.01	0.11	0.04	0.00	0.04	0.00	0.02	1.26
Military*	0.00	0.00	0.00	0.00	0.00	0.00	0.00	0.00

LAX Noise Management

Source: LAX ANOMS, based on available FAA radar flight track data.

\* Aircraft Type for certain military operations may not be available through our data source, therefore will not be included in the report.

## **Summary of Actions Taken by LAWA to Comply with Conditions to the Current Noise Variance for Los Angeles International Airport**

First Quarter 2023

The Los Angeles World Airports (LAWA) continuously works to operate an airport that maintains the highest possible environmental quality of life for surrounding communities. To that end, LAWA continues to take the following actions:

- LAWA continues to implement its Aircraft Noise Mitigation Program (ANMP), designed to fund the mitigation of all incompatible land uses within the noise impact boundary as defined in the State Noise Standards. LAWA updates the ANMP report periodically to ensure that it reasonably represents the mitigation and funding programs that are in place.
- With each second quarter Quarterly Report, LAWA submits an annual update of the ANMP. This update includes the number of dwellings acoustically insulated, the cost of the program, the anticipated funding availability, and the anticipated completion date of the project.
- LAWA continues to monitor and enforce, as appropriate, all of its informal noise abatement procedures in place at LAX, including but not limited to the early turn program, preferential runway use procedures and over ocean operations procedures, as well as the formal maintenance run-up restrictions.
- LAWA continues to work with the Federal Aviation Administration and pilots to improve compliance with its “no turns before the shoreline” policy.
- LAWA will update the April 11, 2014 Report on Implementation of the Preferential Runway Use Policy at LAX within the specified period to reevaluate conditions related to compliance, implementation and possible improvements.
- LAWA continues to provide the information to the County of Los Angeles needed to prepare Quarterly Reports of Noise Monitoring. Included with the noise monitoring information forwarded each quarter is this brief report regarding the implementation of each of the conditions to the Variance.

- LAWA completed an upgrade of the Noise and Operations Monitoring System for LAX in 2022. LAWA received Caltrans certification of the upgraded airport noise and operations monitoring system in October 2022 and provided the County of Los Angeles with a copy of all submitted documentation and Caltrans certification at that time. The County continues to review and audit the data LAWA submits in each Quarterly Report.
- LAWA continues to include tabular data and graphical illustrations with each Quarterly Report describing and comparing the level and type of usage for each runway at LAX during the quarter. In addition, LAWA is including tabular data describing the daily average number of arrivals and departures by aircraft type and model on each runway during all hours and during nighttime hours from 10 pm to 7 am. LAWA is also now providing the runway usage data to the FAA for their use in monitoring air traffic runway usage.
- LAWA continues to monitor and enforce its maintenance run-up curfew (2300-0600). When applicable, LAWA will include with each Quarterly Report, information regarding monitoring and enforcement activities undertaken during the quarter. There were no enforcement actions reported during the first quarter 2023.
- LAWA continues to provide the LAX Noise Comment Phone Line with an option for callers to have a live answer as available, and continues to retrieve any complaint messages and provide appropriate responses in a timely manner.