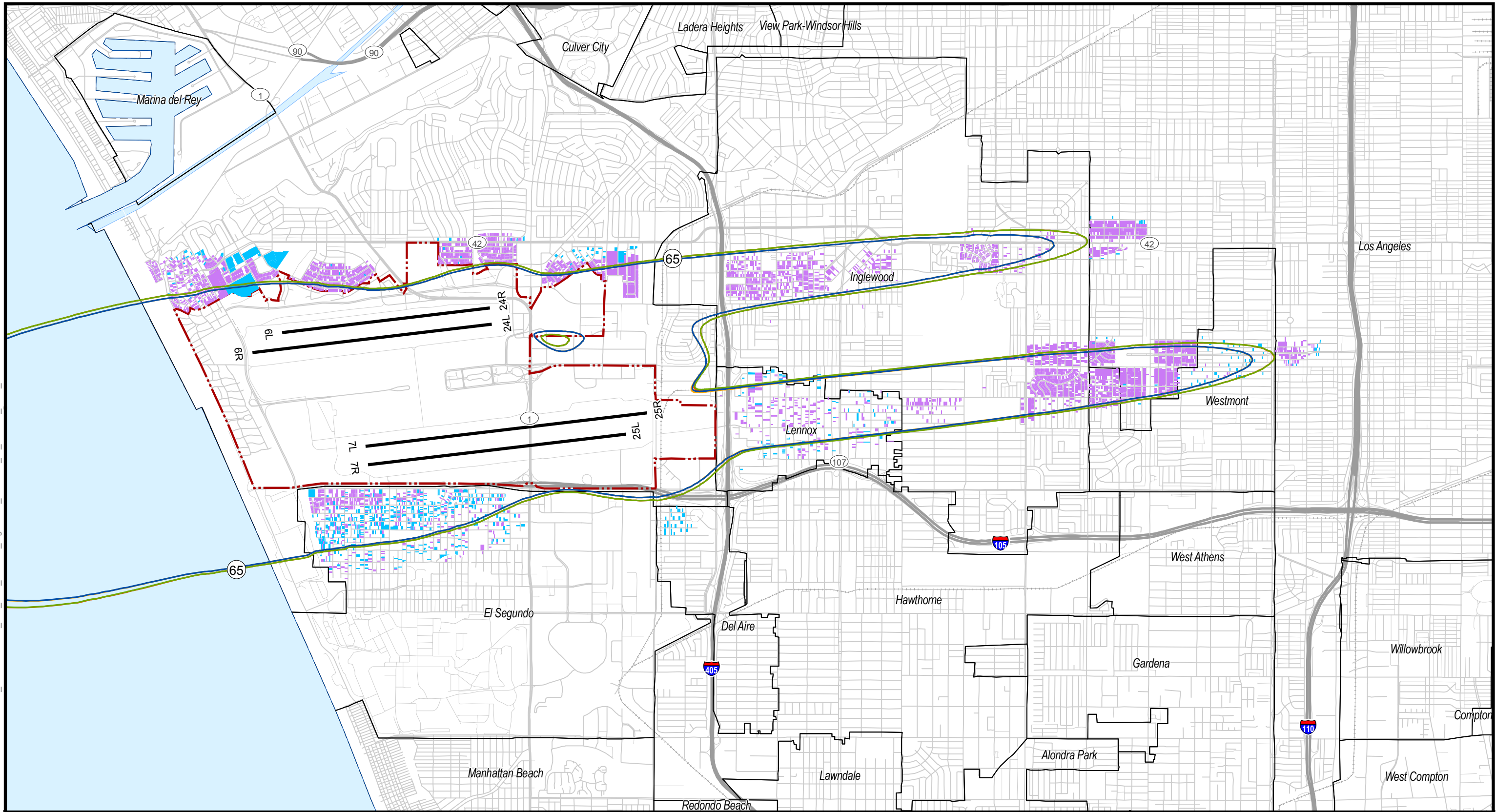


Path: H:\GIS\USA\CA\1300700_LAWA\305210_004_LAX_Part161_FigureS-1_Previous_SI_Parcel_2013_2018.mxd



Note: All area shown on this figure is within the jurisdictional boundaries of both the City of Los Angeles and Los Angeles County.

Basemap: Los Angeles World Airports (LAWA), Southern California Association of Governments (SCAG), Environmental Systems Research Institute (ESRI), United States Geological Survey (USGS)

- Airport Boundary
- Runway / Taxiway
- River / Streams
- Roads
- Railroad
- 2013 Statue Quo CNEL Contours
- 2013 CNEL Contours with Proposed Runway Use Restriction
- 2018 Statue Quo CNEL Contours
- 2018 CNEL Contours with Proposed Runway Use Restriction
- Parcels Identified for Future Sound Insulation
- Previously Sound-Insulated Residential Parcels
- Jurisdictional Boundaries



Previously Sound Insulated Homes and Those Homes Identified for Future Sound Insulation in Relation to the Airport Noise Study Area for 2013 and 2018

Figure S-1

HARRIS MILLER MILLER & HANSON INC.

