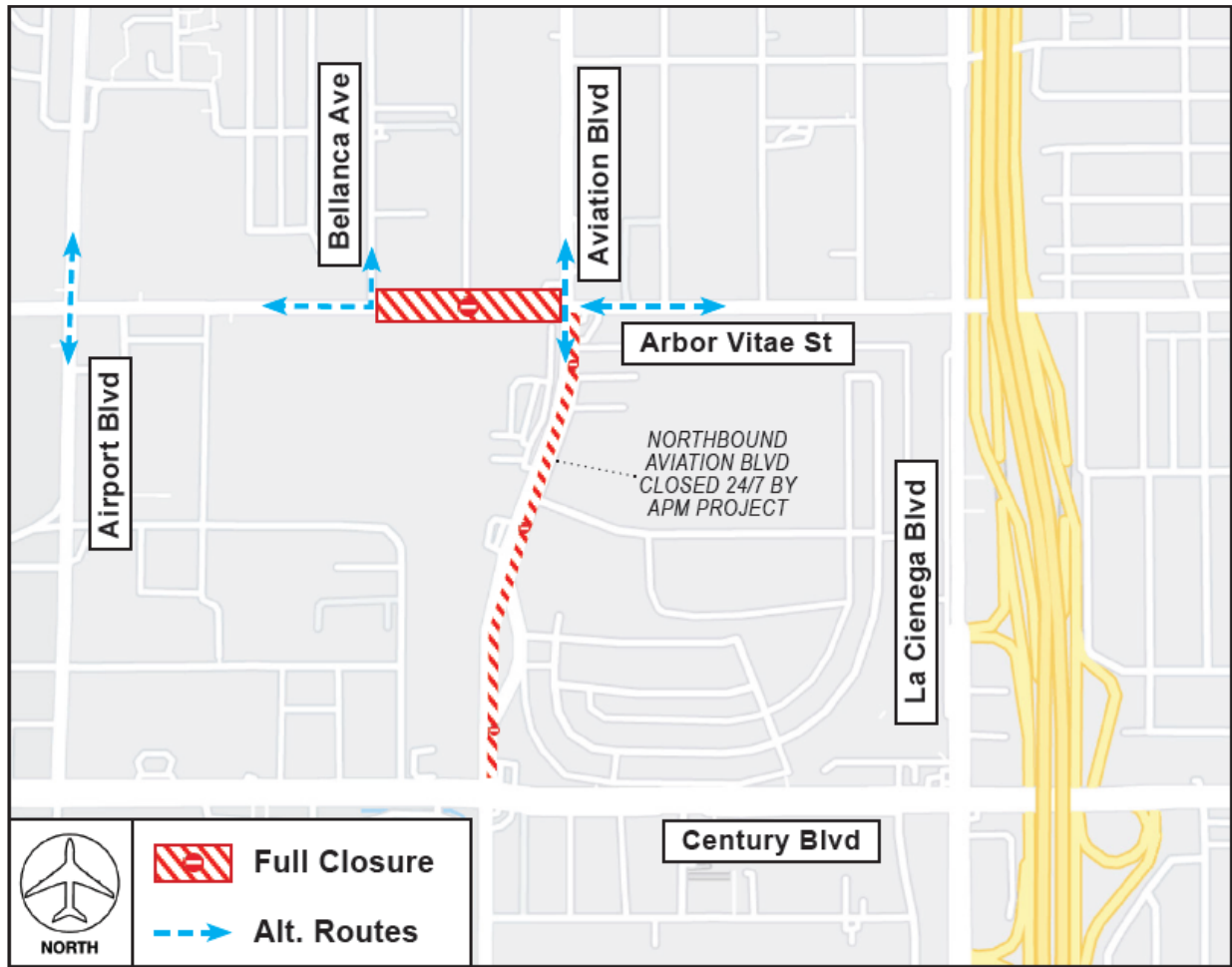


CONSTRUCTION HOT TOPICS

#1 NEW DATES: ARBOR VITAE ST FULL CLOSURE

TO FACILITATE ROADWAY WORK FOR THE CONRAC FACILITY, A CONTINUOUS FULL CLOSURE OF ARBOR VITAE ST BETWEEN BELLANCA AVE AND AVIATION BLVD IS SCHEDULED TO BE IN PLACE EFFECTIVE MONDAY, NOVEMBER 6 AT 6AM. THE 24/7 CLOSURE IS SCHEDULED TO BE IN PLACE THROUGH DECEMBER 2023.



PLEASE NOTE:

NB Aviation Blvd between Century Blvd and Arbor Vitae St is closed 24/7 by the APM project; SB Aviation Blvd traffic is maintained at all times.



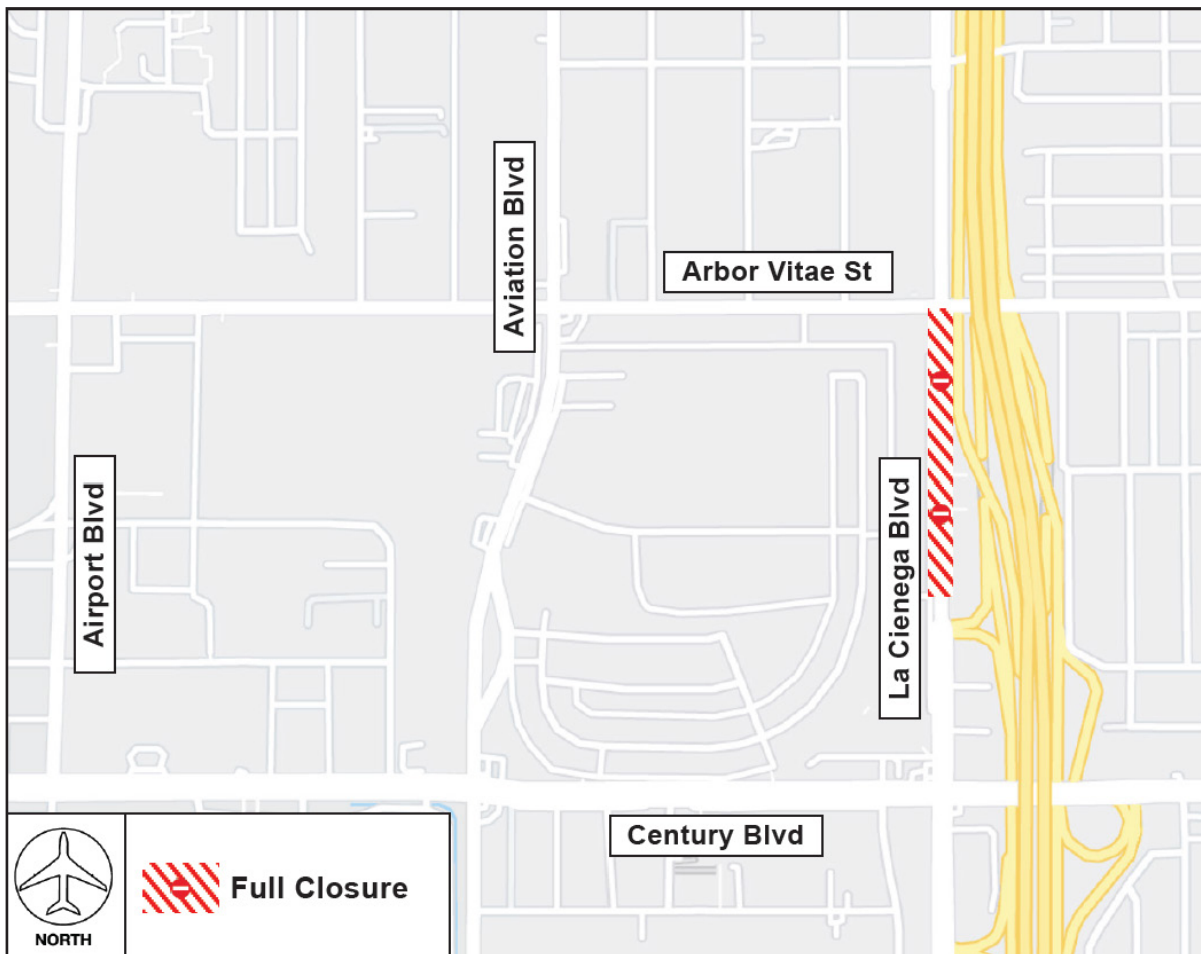
☎️ LAX Construction Hotline: 310-649-5292 📧 LAXConstructionHotline@LAWA.org

flyLAX.com 🐦 @flyLAXairport 📘 LAInternationalAirport

CONSTRUCTION HOT TOPICS

#2 NEW DATES: LA CIENEGA BLVD WEEKEND CLOSURE

TO FACILITATE ROADWAY WORK FOR THE CONRAC FACILITY, LA CIENEGA BOULEVARD BETWEEN ARBOR VITAE STREET AND THE I-405 FREEWAY RAMPS NORTH OF CENTURY BOULEVARD IS SCHEDULED TO BE CLOSED NEXT WEEKEND, NOVEMBER 17 - 20. DETOUR SIGNAGE WILL BE IN PLACE. PLAN AHEAD FOR POTENTIAL DELAYS.



PLEASE NOTE:

All off ramp traffic at this location must turn south on La Cienega Boulevard toward Century Boulevard during this work.



📞 LAX Construction Hotline: 310-649-5292 ✉️ LAXConstructionHotline@LAWA.org
flyLAX.com 🐦 @flyLAXairport 🌐 LAInternationalAirport



CONSTRUCTION HOT TOPICS



#3 LAX CONSTRUCTION MORATORIUMS

DUE TO THE INCREASE IN HOLIDAY SEASON TRAVEL & TRAFFIC, LAWA WILL IMPLEMENT TWO CONSTRUCTION MORATORIUMS OVER THE NEXT TWO MONTHS:

LAWA | **LAX**

THANKSGIVING HOLIDAY CONSTRUCTION RESTRICTIONS

Thursday, November 16 at 6AM
through Tuesday, November 28 at 9PM

LAWA | **LAX**

CHRISTMAS & NEW YEAR'S HOLIDAY CONSTRUCTION RESTRICTIONS

Monday, December 18 at 6AM
through Tuesday, January 2 at 6AM

PLEASE NOTE:

These moratoriums are in place to help minimize passenger inconveniences and operational disruptions during heightened travel periods.

LAX

 LAX Construction Hotline: 310-649-5292  LAXConstructionHotline@LAWA.org
flyLAX.com   @flyLAXairport  LAInternationalAirport

CONSTRUCTION HOT TOPICS

#4 SCHEDULED 24/7 CTA LANE RESTRICTIONS

THE MAP BELOW IS A COLLECTIVE
SNAPSHOT OF ALL SCHEDULED 24/7 LANE
RESTRICTIONS FOR CTA DEPARTURES AND
ARRIVALS LEVEL ROADWAYS FOR THE
MONTH OF NOVEMBER 2023

PLEASE NOTE:

This map only reflects
24/7 continuous lane
closures in the CTA;
other nightly lane
closures / sidewalk
restrictions may be
in place to facilitate
construction activities

ACCESS MAINTAINED:

Traffic around the
Central Terminal Area
will be maintained at
all times, as well as
access to passenger
pick-up and drop-off

PLAN AHEAD:

Motorists should plan
ahead for potential
delays

