

# Construction Hot Topics

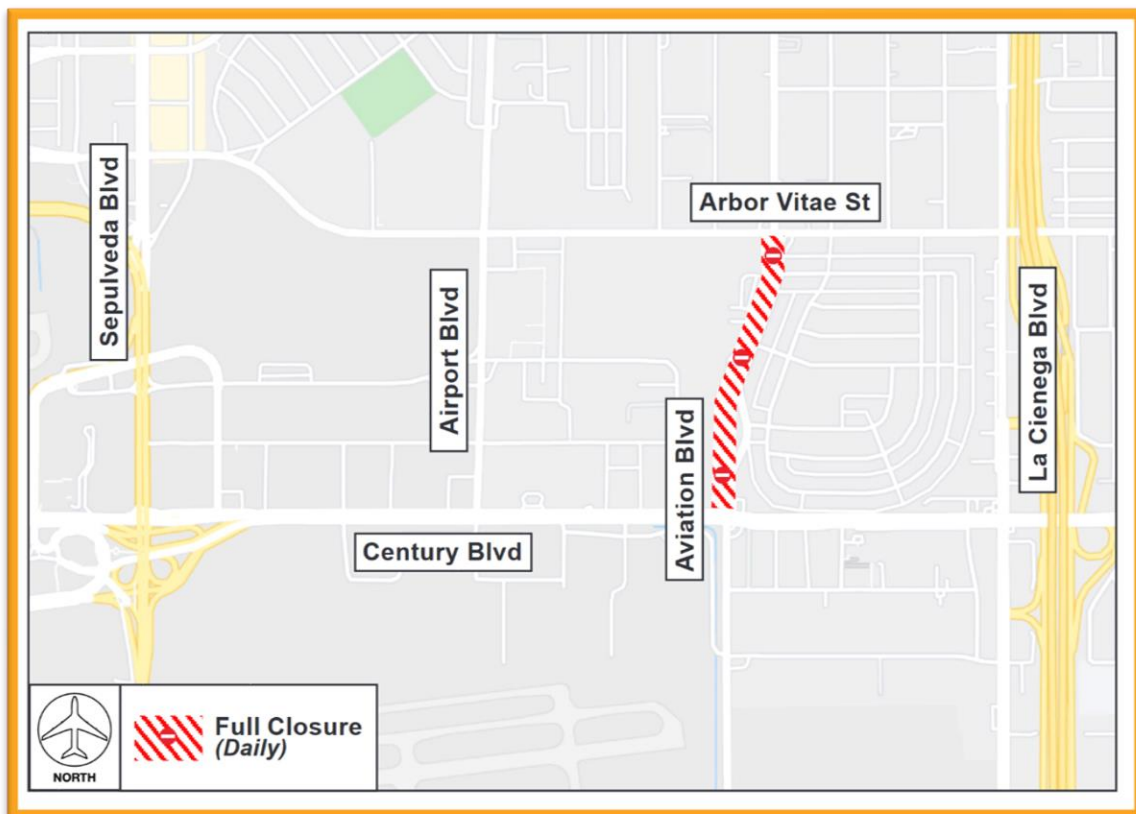
Week of October 31, 2022

## 1. Terminal Vertical Core Opening: Terminals 4 & 5

- The Terminal Vertical Core between Terminals 4 and 5 is scheduled to open this week on Wednesday, November 2
- This new connector building will provide vertical circulation for passengers including escalators and elevators, new passenger check-in and baggage claim areas, a consolidated TSA security screening checkpoint area, post-security connection between the two terminals, and an eventual connection to the Automated People Mover's West CTA Station once the APM opens
- Please note that construction will continue in these two terminals as part of a separate project, the Terminal 4/5 Modernization Program, which is scheduled to complete in 2027

## 2. Aviation Boulevard: Saturday Closures

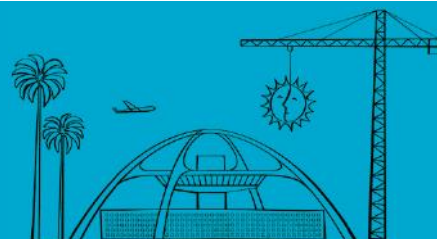
- As work is performed by a third party to install new communication conduit and cable, Aviation Boulevard between Arbor Vitae Street and Century Boulevard will be closed for two Saturdays, November 5 and November 12, from 8AM to 6:30PM each day
- Those using Aviation Boulevard to reach LAX should plan to follow posted detour signs to navigate around construction



*A portion of Aviation Boulevard will be closed during the day on Saturday, November 5 and Saturday, November 12, to facilitate conduit and cable installation*

Change is in the Air(port).

**LAX** WAY BETTER. REALLY.

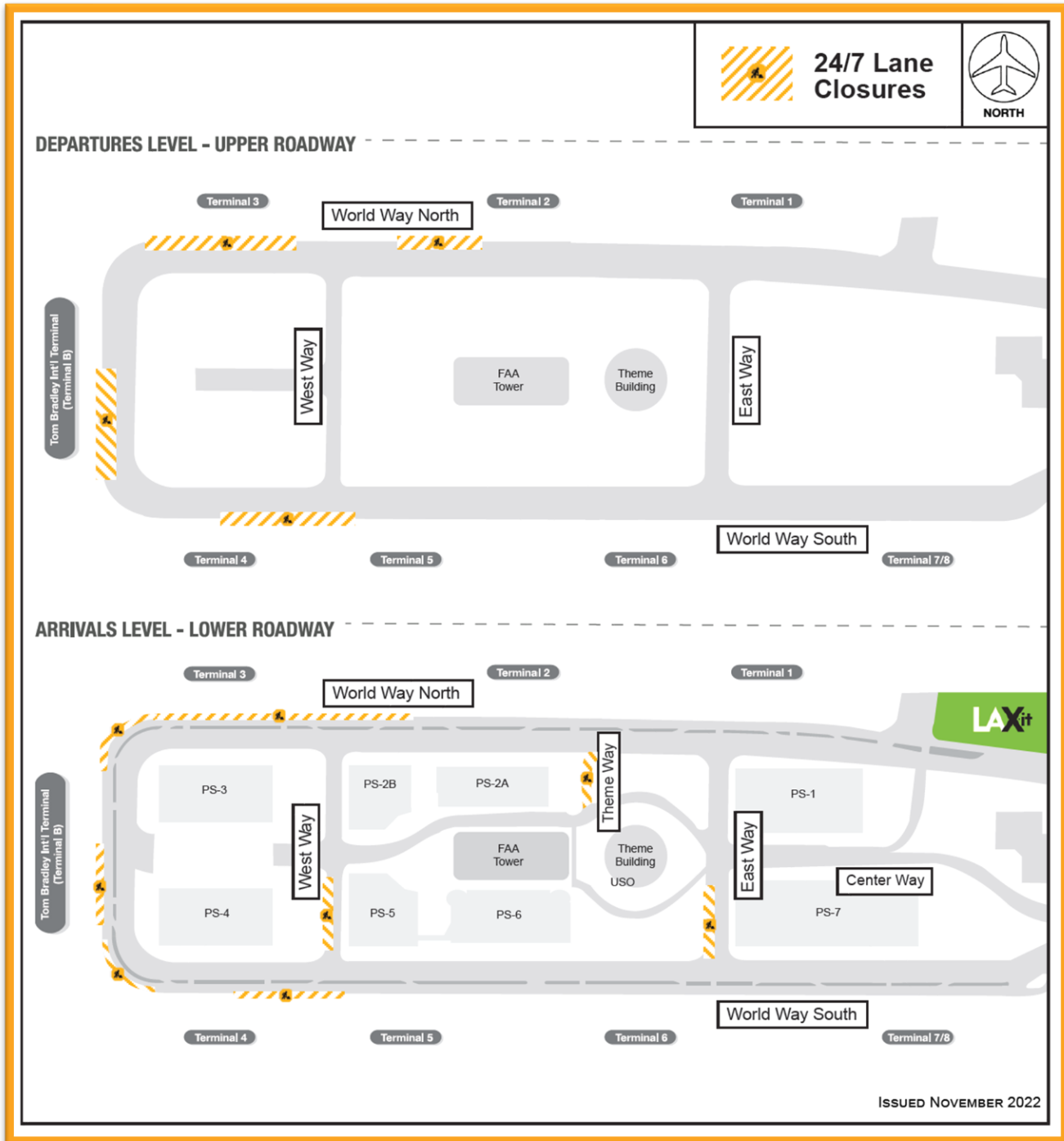


# Construction Hot Topics

Week of October 31, 2022

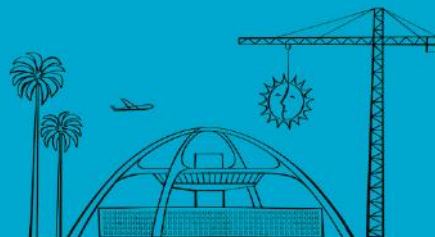
## 3. November 2022: 24/7 CTA Lane Restrictions

- Scheduled 24/7 lane restrictions for Departures / Upper & Arrivals / Lower Level roadways are illustrated on the map below for the month of November 2022
- Traffic will be maintained at all times; please plan ahead



Change is in the Air(port).

**LAX** WAY BETTER. REALLY.

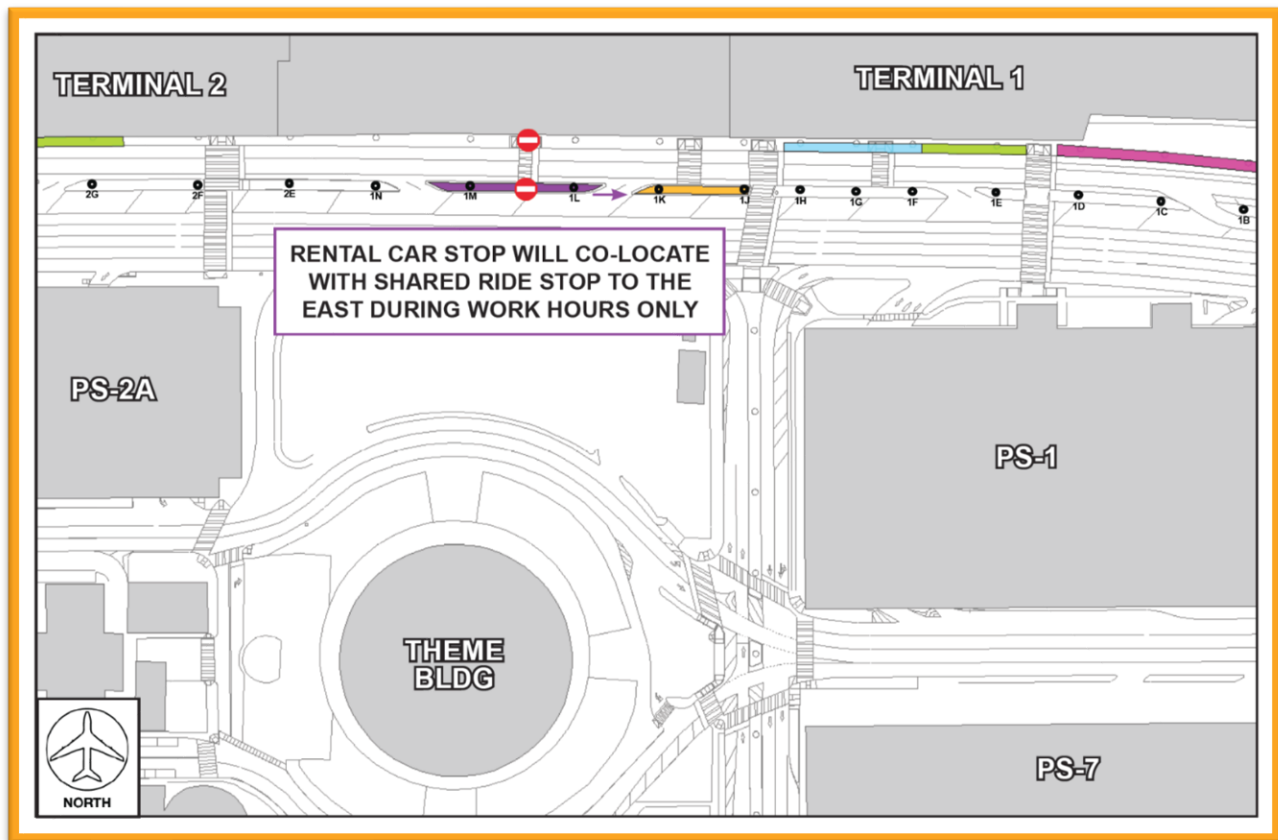


# Construction Hot Topics

Week of October 31, 2022

## 4. Terminal 1: Nightly Shuttle Stop Impacts

- As a reminder, the Rental Car Shuttle Stop (purple) at Terminal 1 is being relocated to the east to collocate with the existing Shared Ride Van & Charter Bus Shuttle Stop (orange) through November 9, nightly from 1AM to 6AM
- The crosswalk to the closed Rental Car Shuttle Stop will be barricaded
- Signage will be in place to direct guests to the relocated stop



*The existing Rental Car stop will be relocated nightly to collocate with the Shared Ride Van & Charter Bus stop at Terminal 1 from 10/26 to 11/9 (1AM to 6AM only)*

## 5. LAX Holiday Construction Moratoriums

- Construction related utility and area shutdown restrictions in the Airport and Central Terminal Area roadways will be in effect during the following times:
  - Thanksgiving Holiday Moratorium: November 17 - 29, 2022
  - Christmas & New Year's Holiday Moratorium: December 19, 2022 - January 3, 2023
- Watch Construction Hot Topics for more information about impacts to guests during the holiday season

Change is in the Air(port).

**LAX** WAY BETTER. REALLY.

