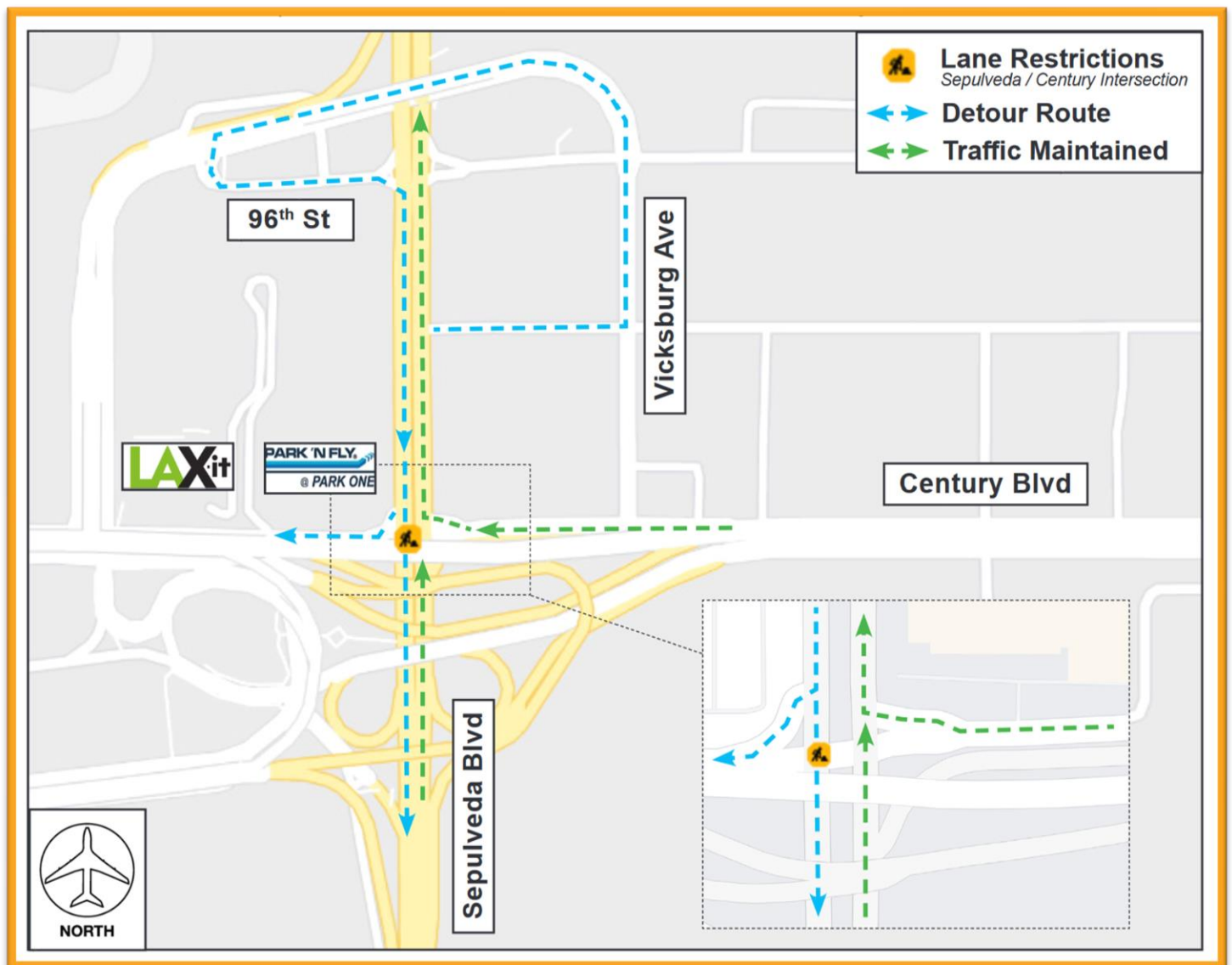


# Construction Hot Topics

Week of September 26, 2022

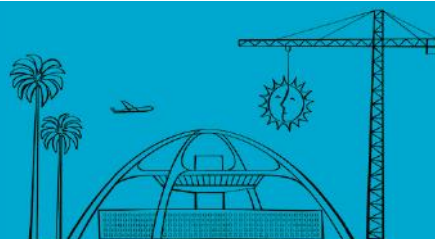
## 1. LAX Entrance: Restrictions on Westbound Century Boulevard

- LADWP will be performing work at the intersection of Sepulveda Boulevard and westbound Century Boulevard nightly (9PM to 5AM) through Friday, October 21
- Vehicles will not be able to continue west on Century Boulevard across the Sepulveda Boulevard intersection to enter LAX
- Flaggers and detours will be in place to assist vehicles in reaching LAX
- Please note that northbound and southbound Sepulveda Boulevard through traffic is maintained at all times



Change is in the Air(port).

**LAX** WAY BETTER. REALLY.

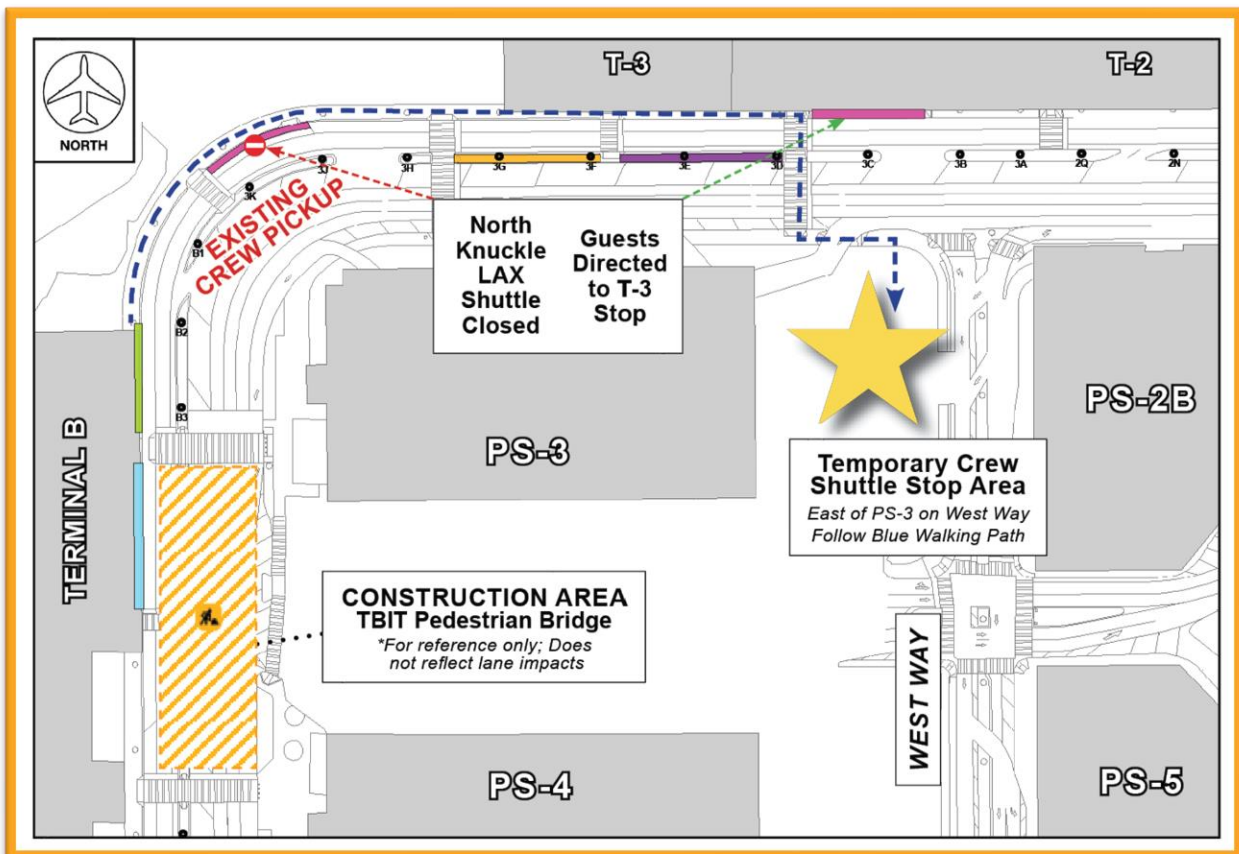


# Construction Hot Topics

Week of September 26, 2022

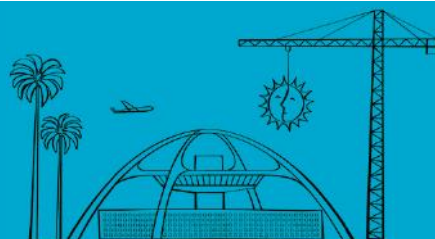
## 2. Terminal B: APM Pedestrian Bridge Construction

- The APM project is installing a Pedestrian Bridge over the roadways between Terminal B and the West CTA Station; construction requires nightly lane restrictions and / or full closures at Terminal B through mid-October 2022
- To facilitate this work the LAX Shuttle Stop between Terminal 3 and Terminal B is closed through Saturday, October 22; guests are directed to Terminal 3
- Terminal B Airline Crew Pick-Up, which is located at the same area on the outer curb, has been temporarily relocated to West Way near Parking Structure 3



Change is in the Air(port).

**LAX** WAY BETTER. REALLY.

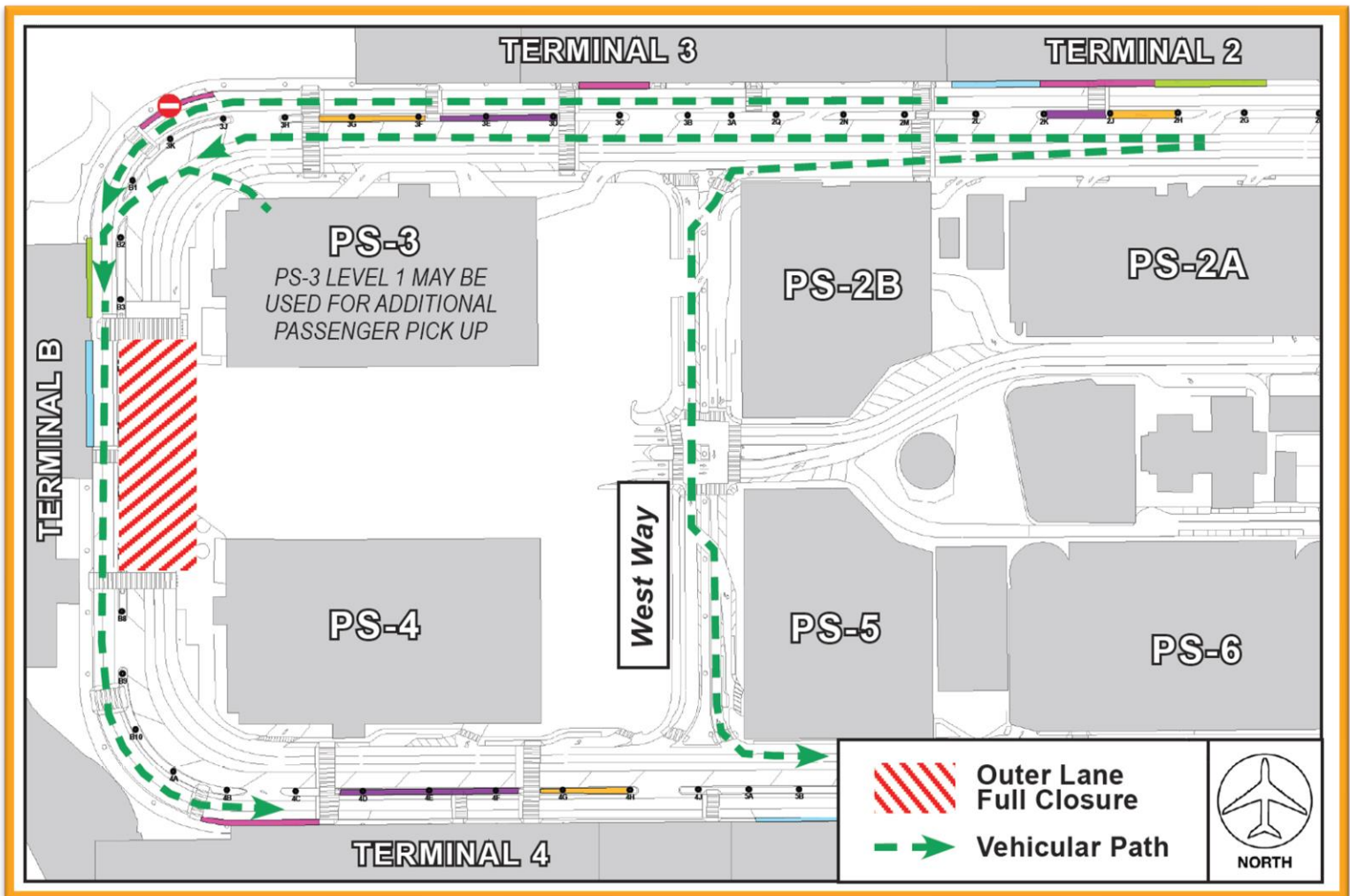


# Construction Hot Topics

Week of September 26, 2022

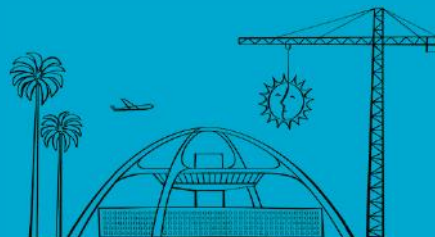
## 3. Terminal B: Arrivals Level Full Closures

- To facilitate construction of the Pedestrian Bridge at Terminal B, overnight full closures of Arrivals Level Outer Lanes are scheduled this week through Friday, Sep. 30
- These closures will occur between 11PM and 7AM with lanes restored during the day
- Traffic is being detoured to the Inner Lanes around construction; vehicles may also use southbound West Way to avoid the work area
- To avoid congestion picking up passengers at Terminal B, may use the Ground Level of Parking Structure 3 for passenger pick-up
- Flaggers are in place to assist with vehicular and pedestrian movements and detours
- *This overnight closure will take place again Sunday, Oct. 2 through Wednesday, Oct. 5 and Friday, Oct. 21 through Saturday, Oct. 22*



Change is in the Air(port).

**LAX** WAY BETTER. REALLY.



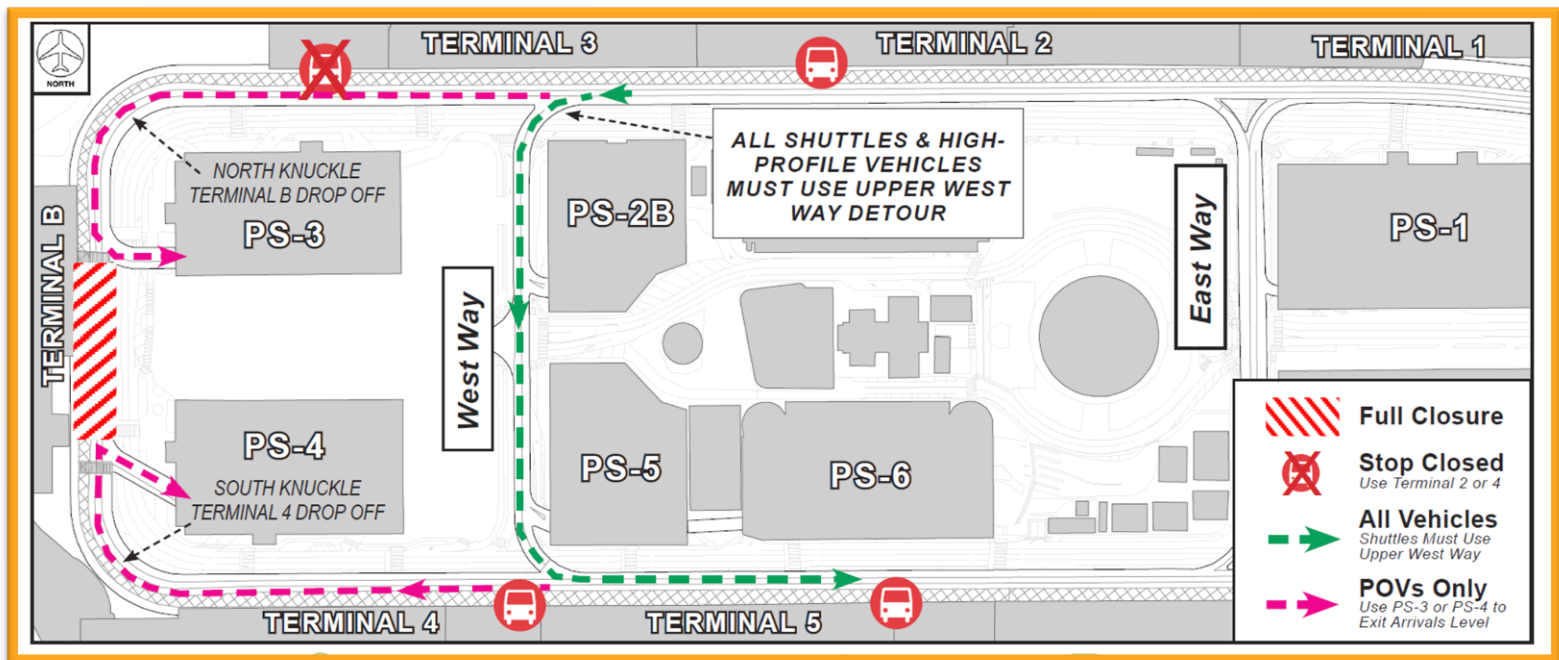


# Construction Hot Topics

Week of September 26, 2022

## 4. Terminal B: Departures Level Full Closures

- To facilitate construction of the Pedestrian Bridge at Terminal B, full closures of the Departures Level roadway are scheduled this week Monday, Sep. 26 overnight to Tuesday, Sep. 27 and Wednesday, Sep. 28 overnight (two nights) to Friday, Sep. 30
- These full closures will occur between 12AM and 4AM with lanes restored during the day
- The Hotel & Private Parking Shuttle Stop at Terminal 3 will be closed overnight with guests directed to the stop at Terminal 2
- Personal vehicles may use the North Knuckle for Terminal B drop off or the South Knuckle for Terminal 4 drop off, using Parking Structures 3 or 4 to exit via the Arrivals Level
- The Departures Level sidewalk at Terminal B (at the work area) will be closed; guests are directed downstairs to the Arrivals Level
- Flaggers are in place to assist with vehicular and pedestrian movements and detours
- *This overnight full closure will take place again Sunday, Oct. 2 through Tuesday, Oct. 4*



Change is in the Air(port).

**LAX** WAY BETTER. REALLY.

