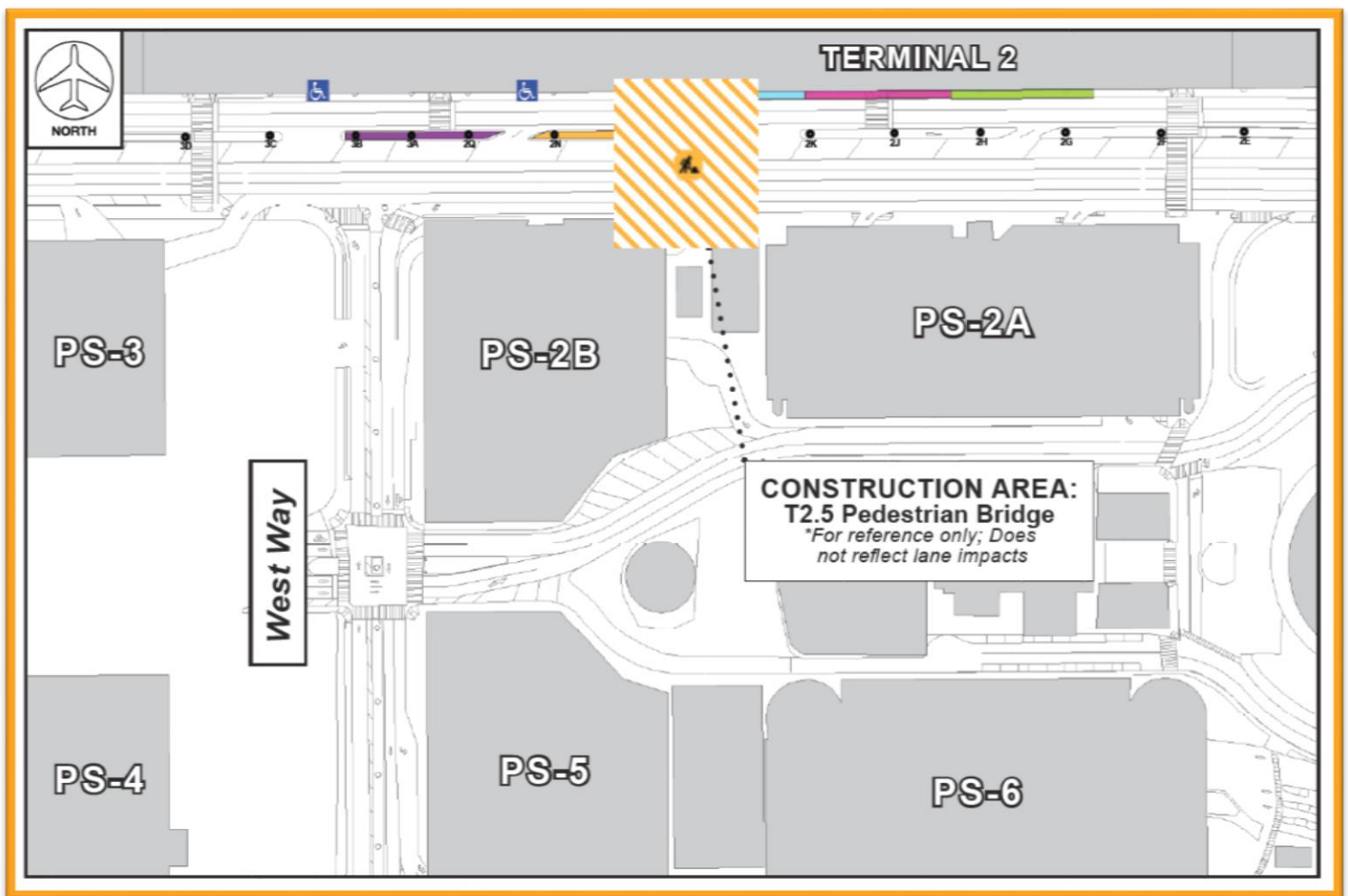


Construction Hot Topics

Week of September 6, 2021

1. Terminal 2.5: Pedestrian Bridge Construction

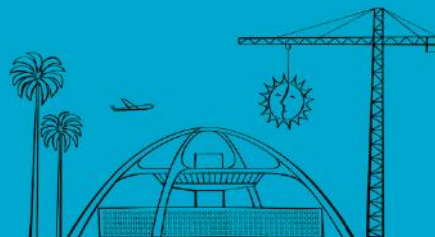
- Starting next week, the Automated People Mover project will begin construction of the new Pedestrian Bridge that will eventually connect the APM's Center CTA Station with the future Terminal Core between Terminals 2 & 3
- Lane restrictions on Arrivals and Departures Levels are scheduled through mid-October to facilitate this work at the area shown below
- On select nights, full closures of Arrivals Outer Lanes and / or all Departures Level Lanes are required; for any lane restriction or full closure, detours, signage and flaggers will be in place to maintain access and assist with vehicular and pedestrian wayfinding
- Watch Construction Hot Topics for more updates on this project



Terminal 2.5 APM Pedestrian Bridge Construction

Change is in the Air(port).

LAX WAY BETTER. REALLY.

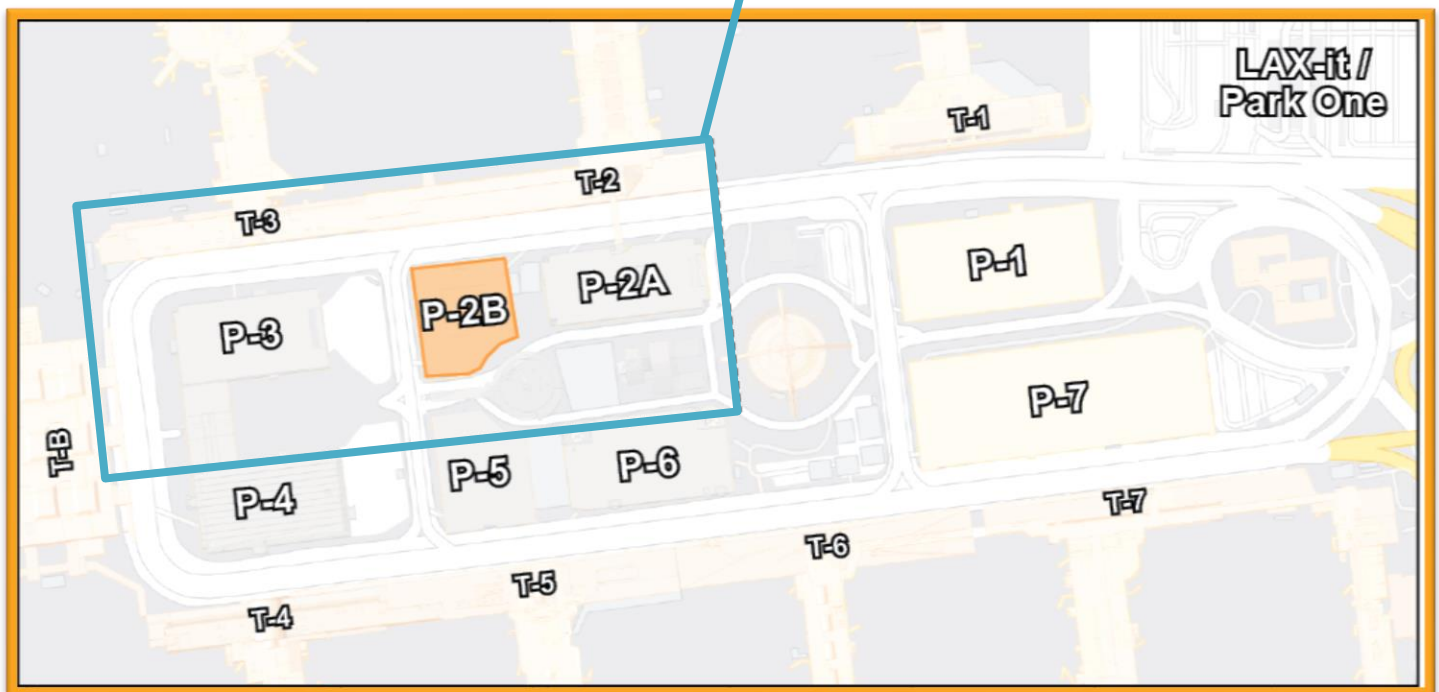
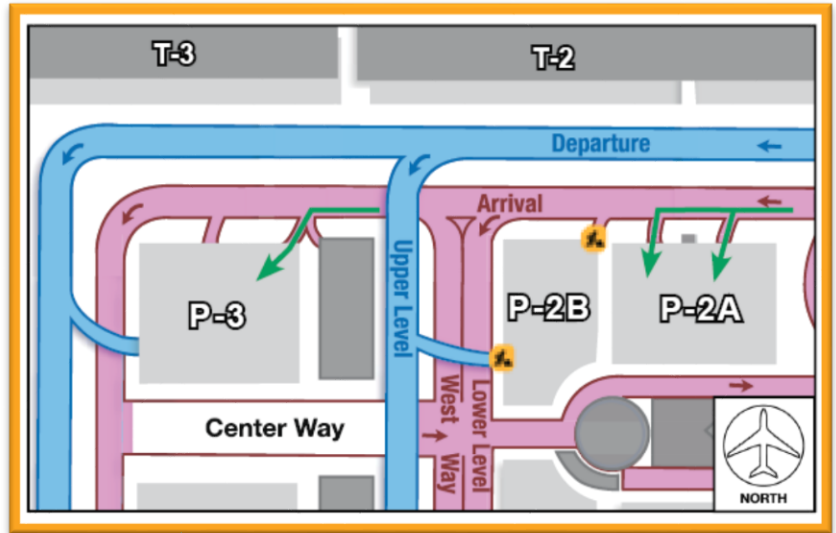


Construction Hot Topics

Week of September 6, 2021

2. Parking Structure 2B: September Impacts

- Work for the ABM Smart Parking Project and APM Terminal 2.5 Pedestrian Bridge will impact the Arrivals and Departures Level ingresses to Parking Structure 2B throughout September 2021
- Arrivals Entrance: Closed 24/7 through Friday, September 17; from then through Friday, September 24, it's closed nightly from 12AM to 6AM
- Departures Entrance: Closed 24/7 beginning Friday, September 17 through Friday, September 24
- Alternative parking options include Park One, Parking Structure 2A or Parking Structure 3



Parking Structure 2B: September Ingress Impacts

Change is in the Air(port).

LAX WAY BETTER. REALLY.

