

Construction Hot Topics

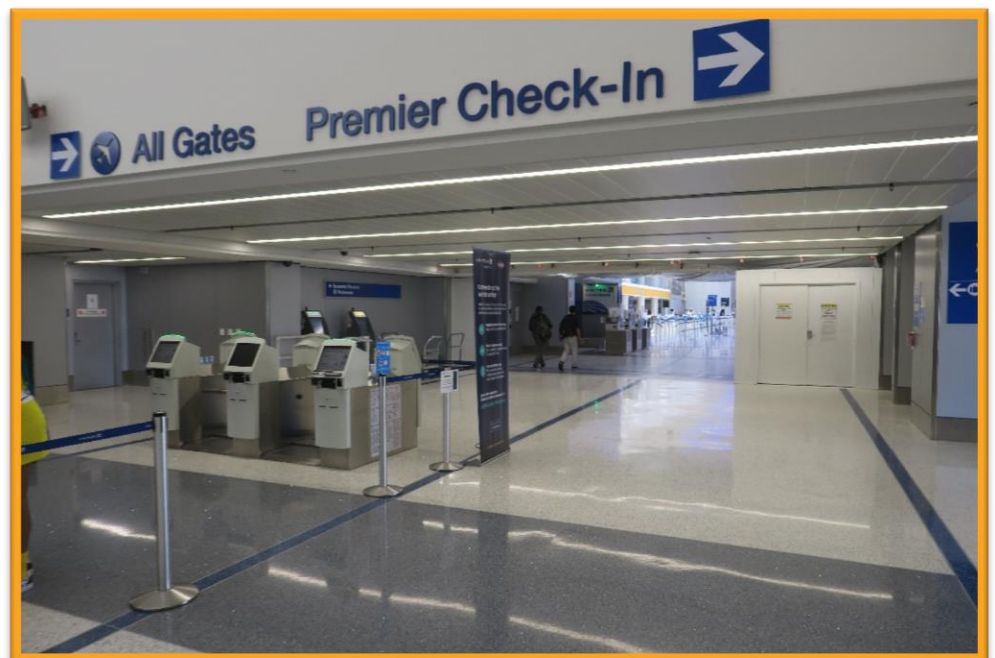
Week of July 27, 2020

1. Terminal 7 Construction Barricades Removed

- Construction barricades on the Departures Level in Terminal 7 Check-In have been removed, opening up the hallway and creating more room for passenger flow



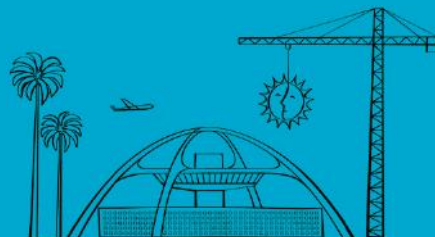
*Terminal 7, Departures Level
(looking east)*



*Terminal 7, Departures Level
(looking west)*

Change is in the Air(port).

LAX WAY BETTER. REALLY.

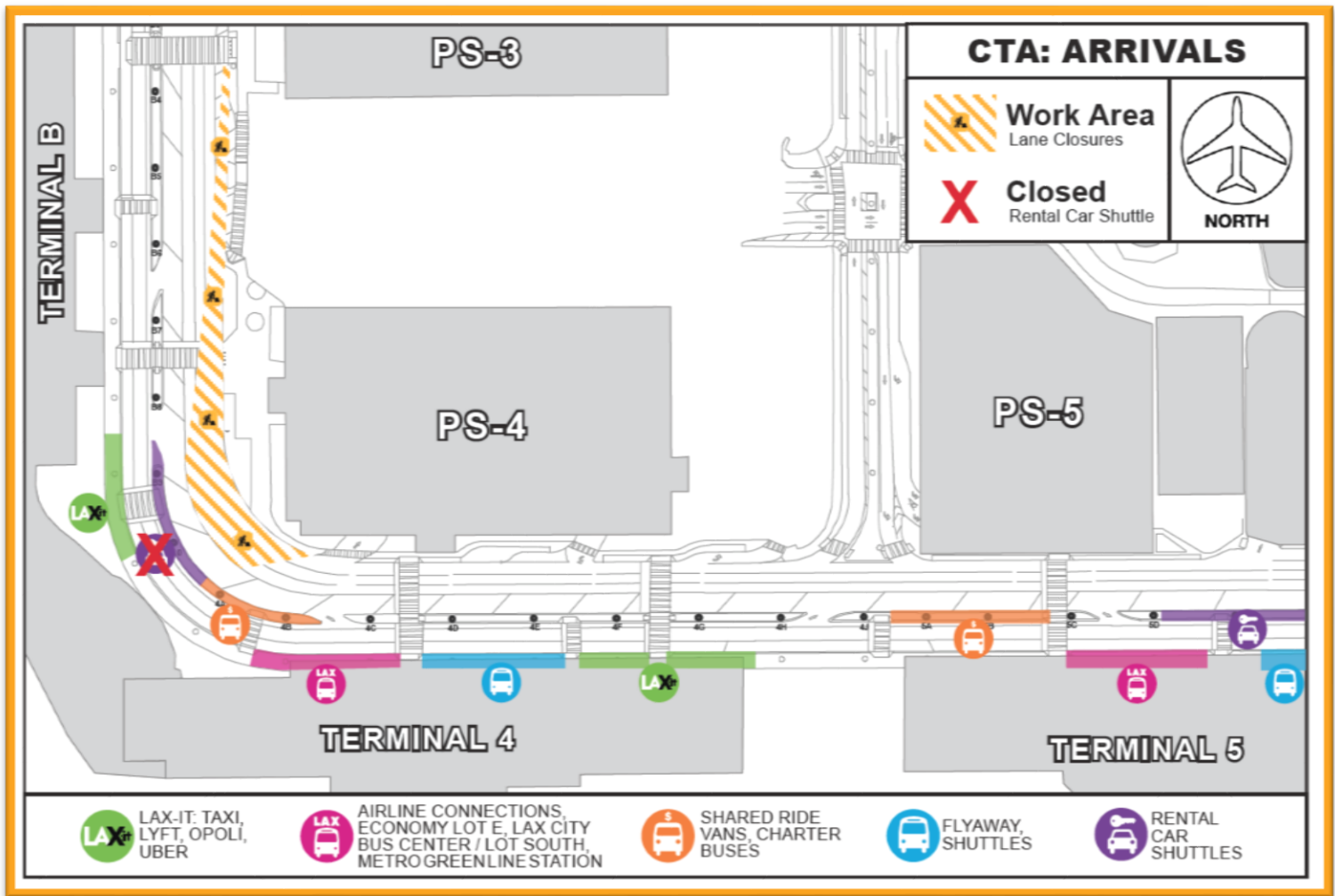


Construction Hot Topics

Week of July 27, 2020

2. CTA Lane Restrictions: Terminal B / 4

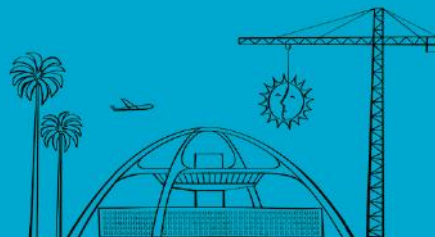
- Potholing work for the Automated People Mover will restrict three Arrivals Level Outer Lanes at the South Knuckle (area between Terminal B and Terminal 4) beginning July 30 through August 6, nightly from 1AM to 6AM (Monday through Friday)
- The Rental Car Shuttle Stop between Terminal B and Terminal 4 will be closed during this work; signage will be in place directing guests to the next available shuttle stop



CTA Lane Restrictions between Terminal B and Terminal 4

Change is in the Air(port).

LAX WAY BETTER. REALLY.



Construction Hot Topics

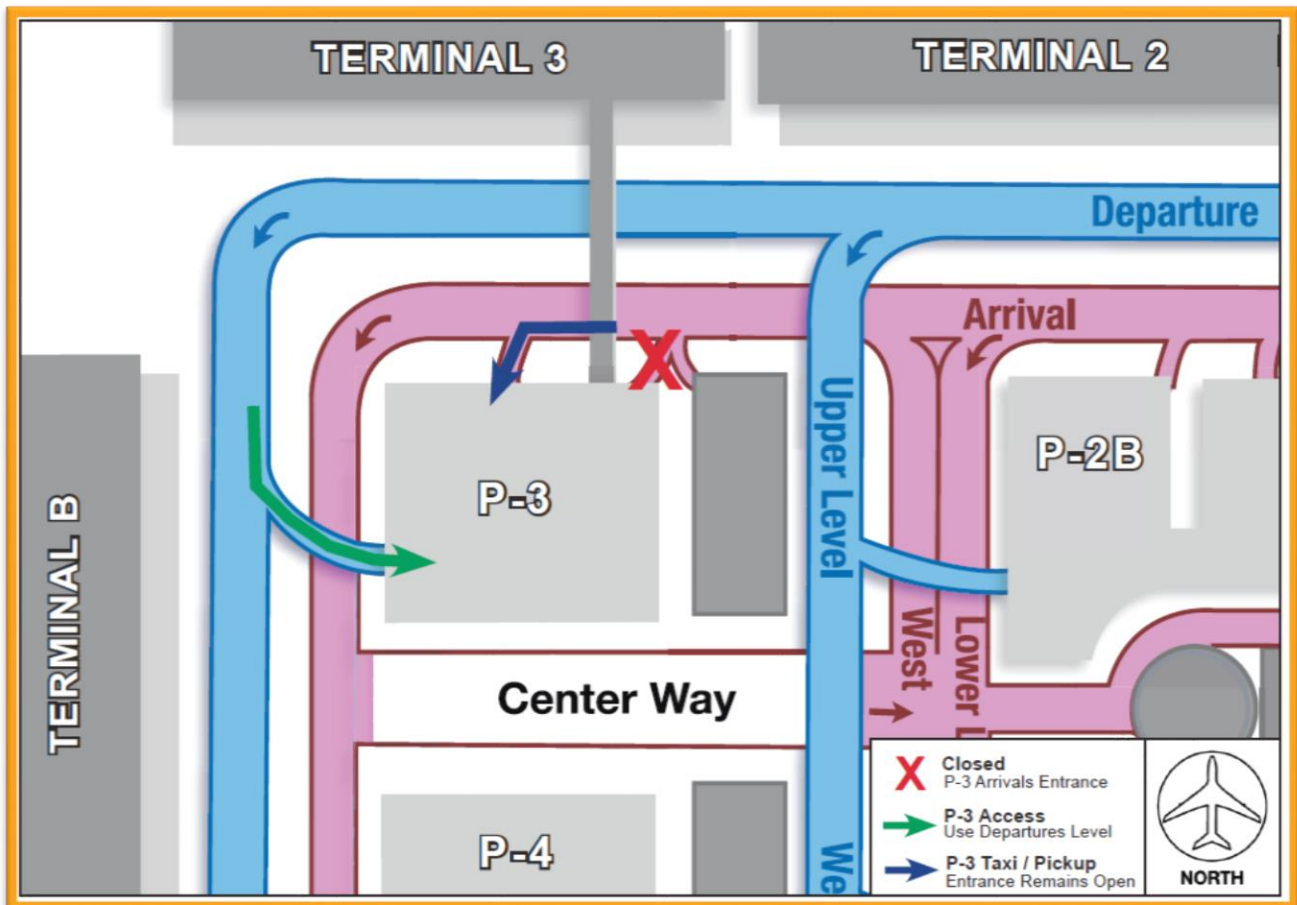
Week of July 27, 2020

3. Parking Structure 3 Ingress Impacts

- Potholing work for the Automated People Mover project will impact the easternmost entrance to long term parking at Parking Structure 3 beginning July 27 through August 6
- Work at the entrance will occur nightly the first week (7/26 – 7/31; 12AM to 6AM) and continuously for the second week (8/2 – 8/6; 24/7)
- Signage is in place to assist with wayfinding when the entrance is closed



PS-3 Entrance impacted by APM work



Change is in the Air(port).

LAX WAY BETTER. REALLY.

