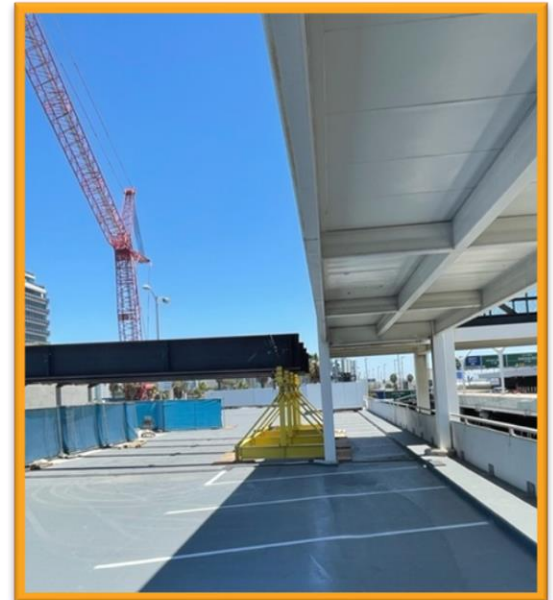


Construction Hot Topics

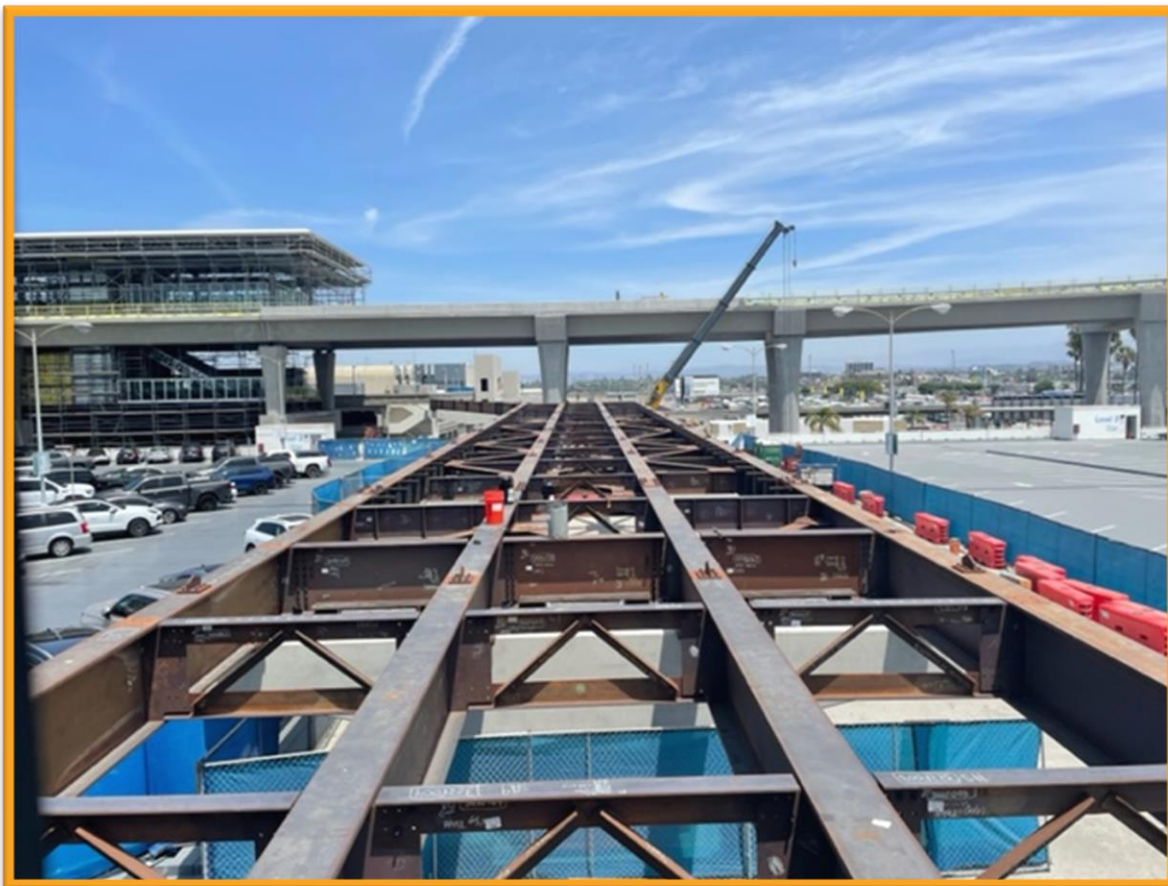
Week of July 25, 2022

1. Parking Structure 7: Roof Impacts for Pedestrian Bridge

- A portion of the Roof Level of Parking Structure 7 is restricted to allow for the construction of the pedestrian bridge that will connect Terminal 7 to the Automated People Mover's East CTA Station
- The framework for the bridge is currently being installed, pictured right and below; it will connect with the existing pedestrian sky bridge that connects Terminal 7 with Parking Structure 7 over the World Way South roadways

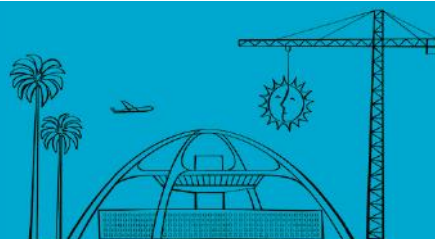


*Pedestrian Bridge Construction over
Parking Structure 7, Roof Level*



Change is in the Air(port).

LAX WAY BETTER. REALLY.



Construction Hot Topics

Week of July 25, 2022

2. CTA Pedestrian Bridges: Construction Progress

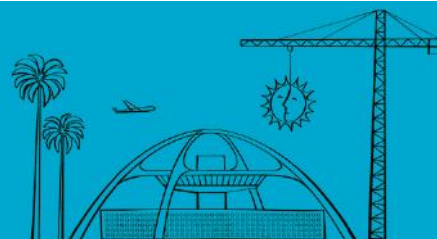
- Five out of six total pedestrian bridge structures have been successfully installed in the Central Terminal Area: At the Terminal 1 Extension, Terminal 2, Terminal 3, between Terminals 4 and 5, and between Terminals 5 and 6
- Of the five bridges to be installed, four are currently undergoing glass panel installation, a major milestone for the construction progress of the bridges
- The sixth and final pedestrian bridge will be installed between Terminal B and the future APM West CTA Station between Parking Structures 3 and 4; this work is currently scheduled for later this year
- Watch Construction Hot Topics for more updates on construction progress and impacts



Glass panel installation on the Pedestrian Bridge at Terminal 2

Change is in the Air(port).

LAX WAY BETTER. REALLY.

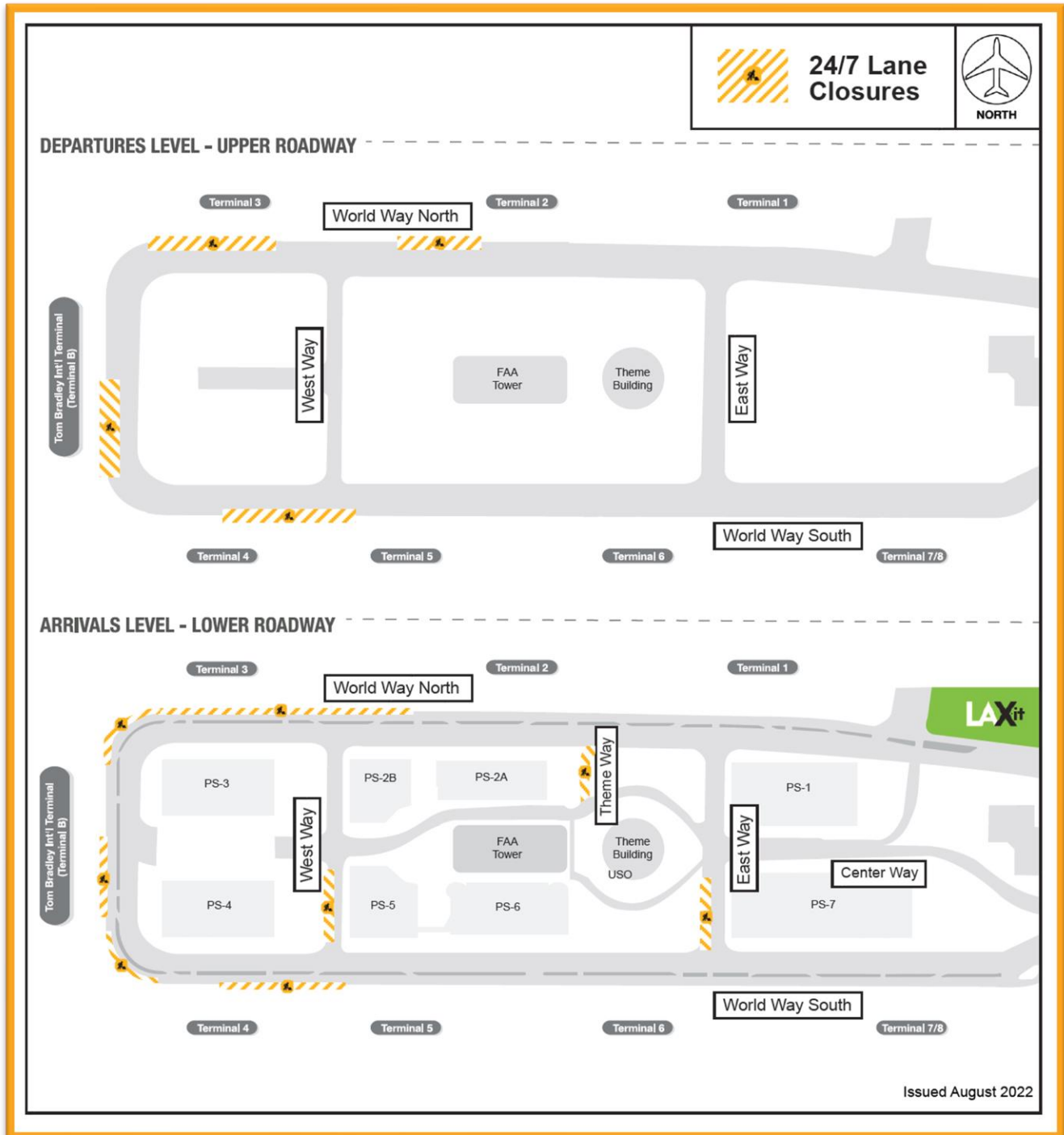


Construction Hot Topics

Week of July 25, 2022

3. August 2022: 24/7 CTA Lane Restrictions

- Scheduled 24/7 lane restrictions for Departures / Upper & Arrivals / Lower Level roadways are illustrated on the map below for the month of August 2022
- Traffic will be maintained at all times; please plan ahead



Change is in the Air(port).

LAX WAY BETTER. REALLY.

