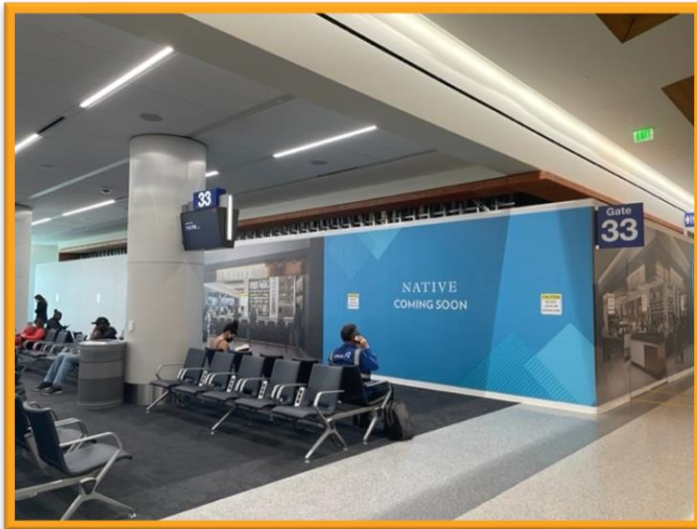
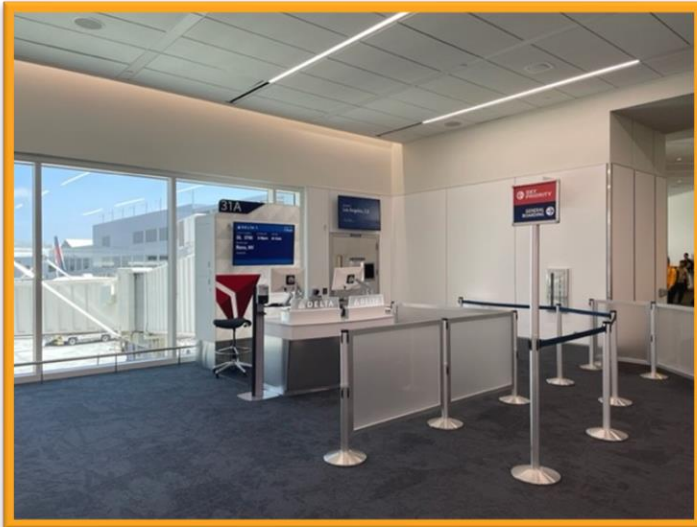


# Construction Hot Topics

Week of May 31, 2022

## 1. Terminal 3: Concourse Gate Openings

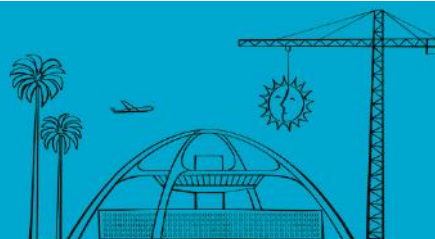
- Construction at Terminals 2 and 3 is ongoing as part of the Delta Sky Way Program
- Last week on May 25, three new gates opened inside the Terminal 3 Concourse: Gates 31A, 31B and 33
- Restrooms in the area also opened, including Women's, Men's, a Family Restroom / Nursing Room and a Pet Relief area, as well as water refill stations; concessions in the area remain under construction but are scheduled to open soon



Top Row: Gate 31A and Gate 31B  
Bottom Row: Gate 33 and New Restrooms  
Terminal 3 Concourse

Change is in the Air(port).

**LAX** WAY BETTER. REALLY.

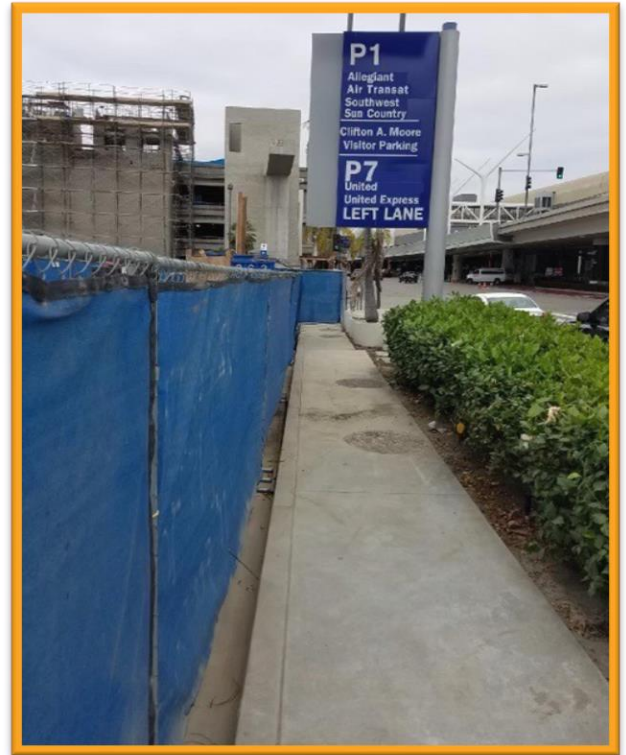


# Construction Hot Topics

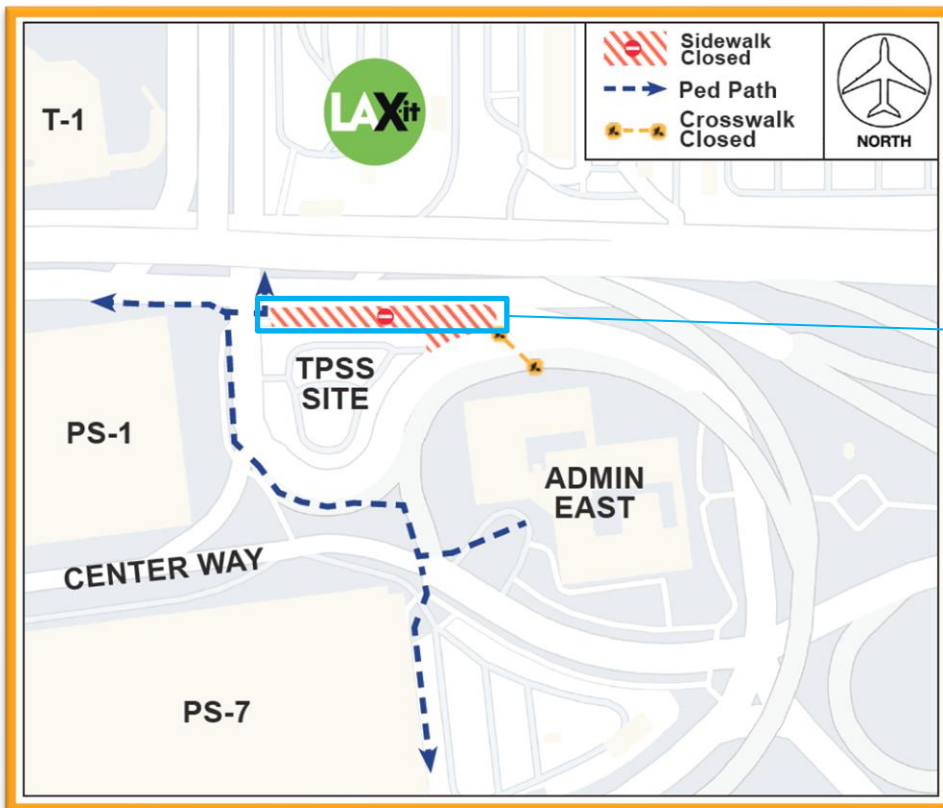
Week of May 31, 2022

## 2. Sidewalk Open: World Way North near LAX-it

- The APM project has closed the sidewalk along the south side of World Way North, illustrated on the map below, to perform work north of the Traction Power Substation (TPSS) since early April 2022
- This work has been completed and the sidewalk is now open
- The TPSS is where electricity will be converted into the appropriate current, voltage and frequency needed for the Automated People Mover



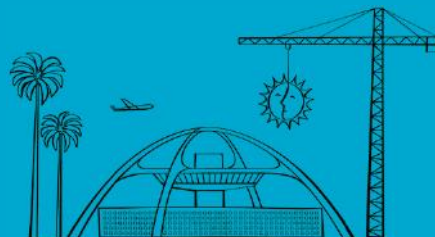
*Sidewalk is re-opened along north side of TPSS*



*Map showing previous closures at area*

Change is in the Air(port).

**LAX** WAY BETTER. REALLY.





# Construction Hot Topics

Week of May 31, 2022

## 3. Construction Milestone: APM Center CTA Station

- Last week on May 27, the Automated People Mover project placed the final section of steel at the Center Station inside the Central Terminal Area (near the FAA Tower / Parking Structure 2A)
- The Center CTA Station will provide service to Terminals 1, 2, 5 and 6 once the APM opens
- This milestone brings APM Station construction to roughly 40% completion with final steel work at the West CTA Station (near Tom Bradley International Terminal / between Parking Structures 3 & 4) scheduled to be complete in the coming months



*Left: Final steel placed at Center CTA APM Station*

*Bottom: Barricades removed at Arrivals T5.5 Area (with roadway lanes to be restored)*

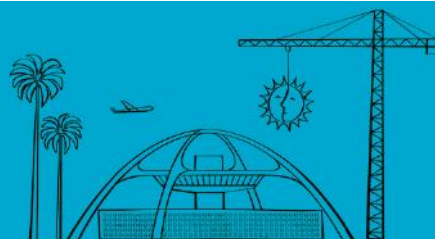
## 4. Terminal 5.5: Construction Update

- Arrivals Level construction barricades between Terminals 5 & 6 have been removed as work progresses on the Terminal 5.5 Cores & APM Interface project
- Work to restore the roadway lanes is ongoing; the Arrivals Level portion of the new building and all roadway lanes are scheduled to open in the coming weeks
- On the Departures Level, curbside barricades and roadway restrictions still remain but are also scheduled to be removed and the area re-opened in the coming weeks



Change is in the Air(port).

**LAX** WAY BETTER. REALLY.

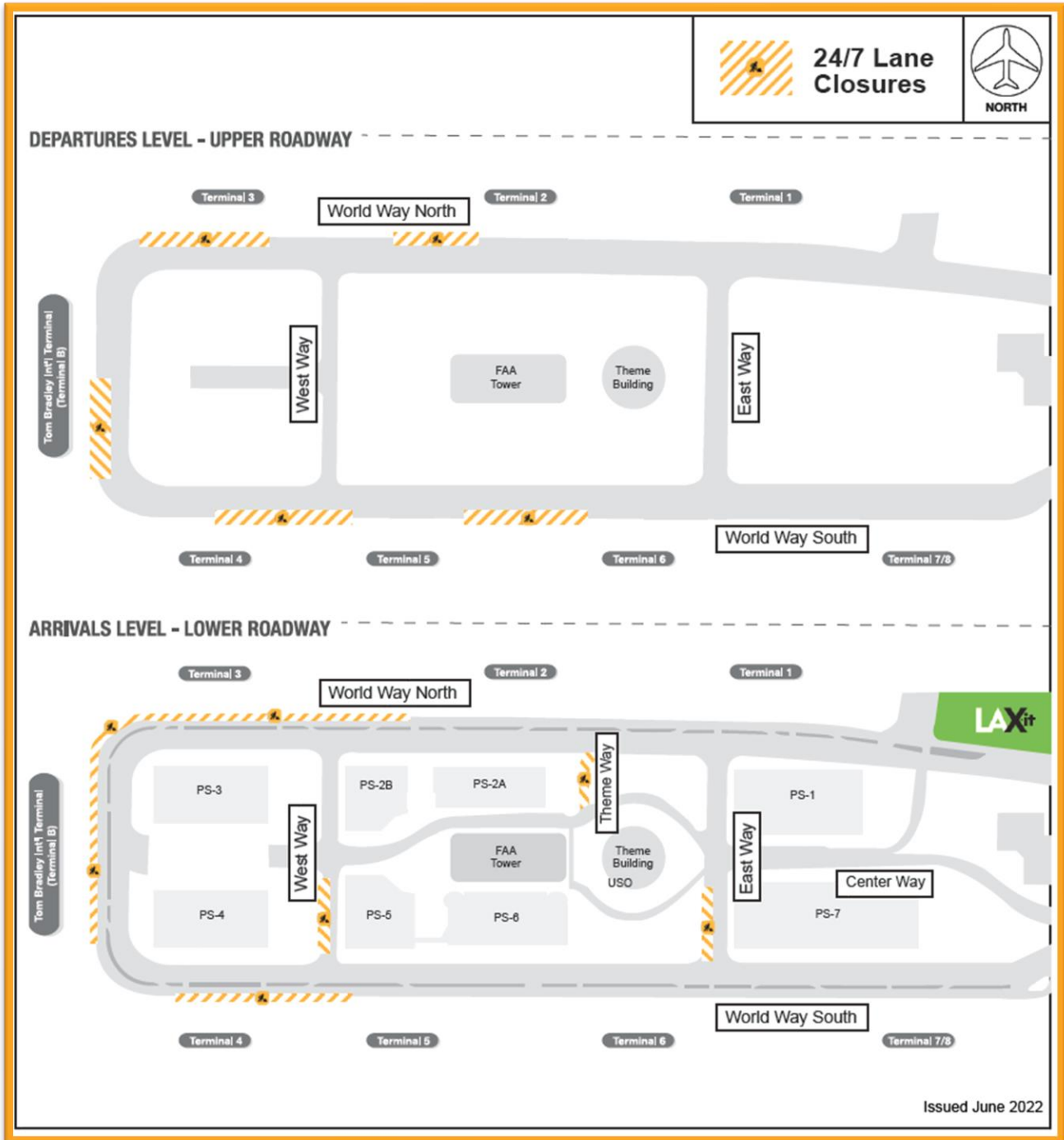


# Construction Hot Topics

Week of May 31, 2022

## 5. June 2022: 24/7 CTA Lane Restrictions

- Scheduled 24/7 lane restrictions for Departures / Upper & Arrivals / Lower Level roadways are illustrated on the map below for the month of June 2022
- Traffic will be maintained at all times; please plan ahead



Change is in the Air(port).

**LAX** WAY BETTER. REALLY.

