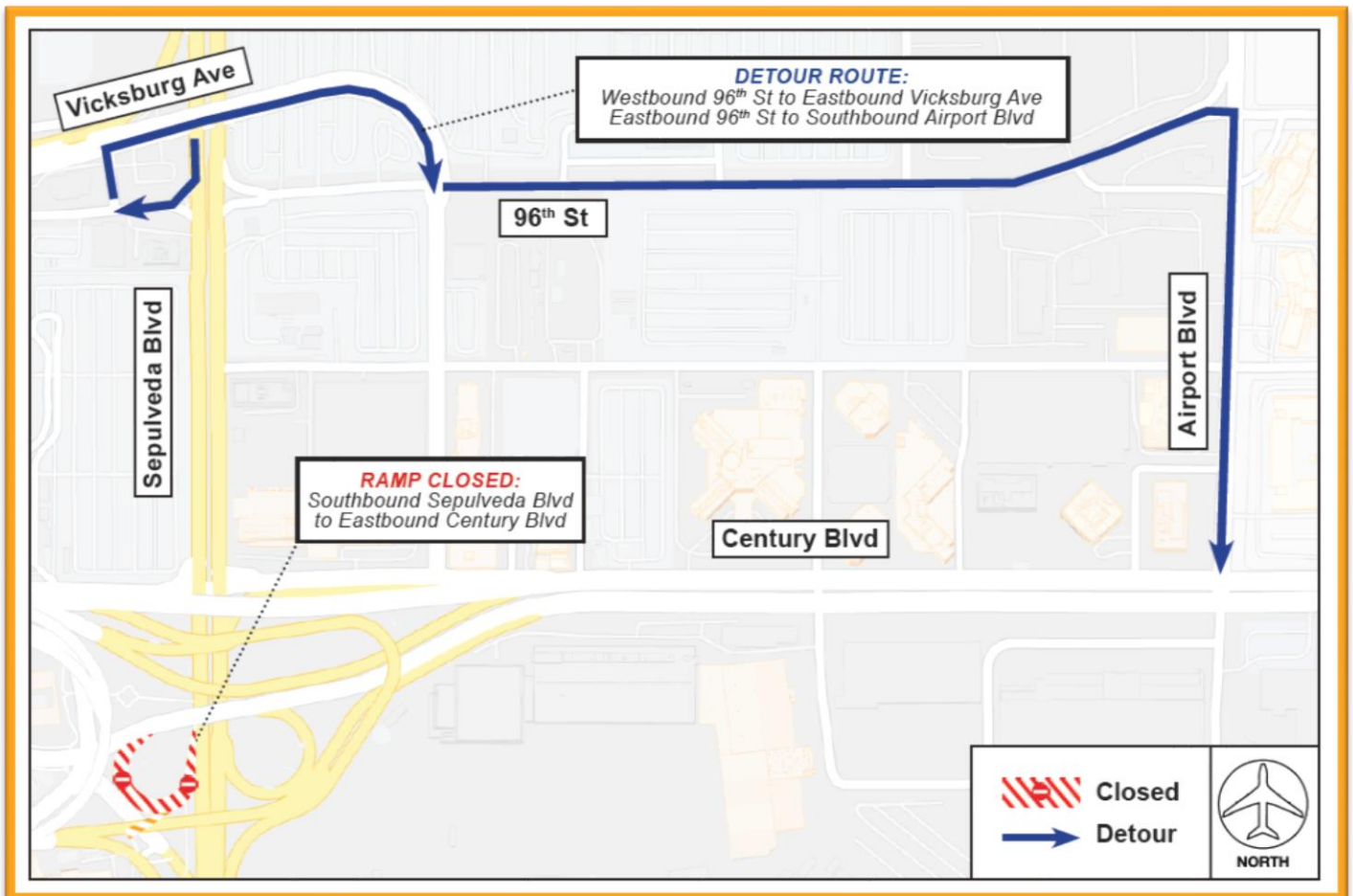


# Construction Hot Topics

Week of May 24, 2021

## 1. Road Restrictions: Southbound Sepulveda to Eastbound Century (West Loop)

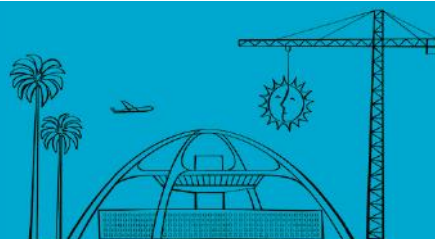
- To facilitate construction of the Automated People Mover guideway over Sepulveda Boulevard, the southbound Sepulveda Boulevard to eastbound Century Boulevard ramp (West Loop) will be closed nightly through June 15, 2021 (11PM to 6AM)
- Detours and signage will be in place; motorists should plan ahead for potential delays



West Loop Overnight Closures through June 15, 2021

Change is in the Air(port).

**LAX** WAY BETTER. REALLY.

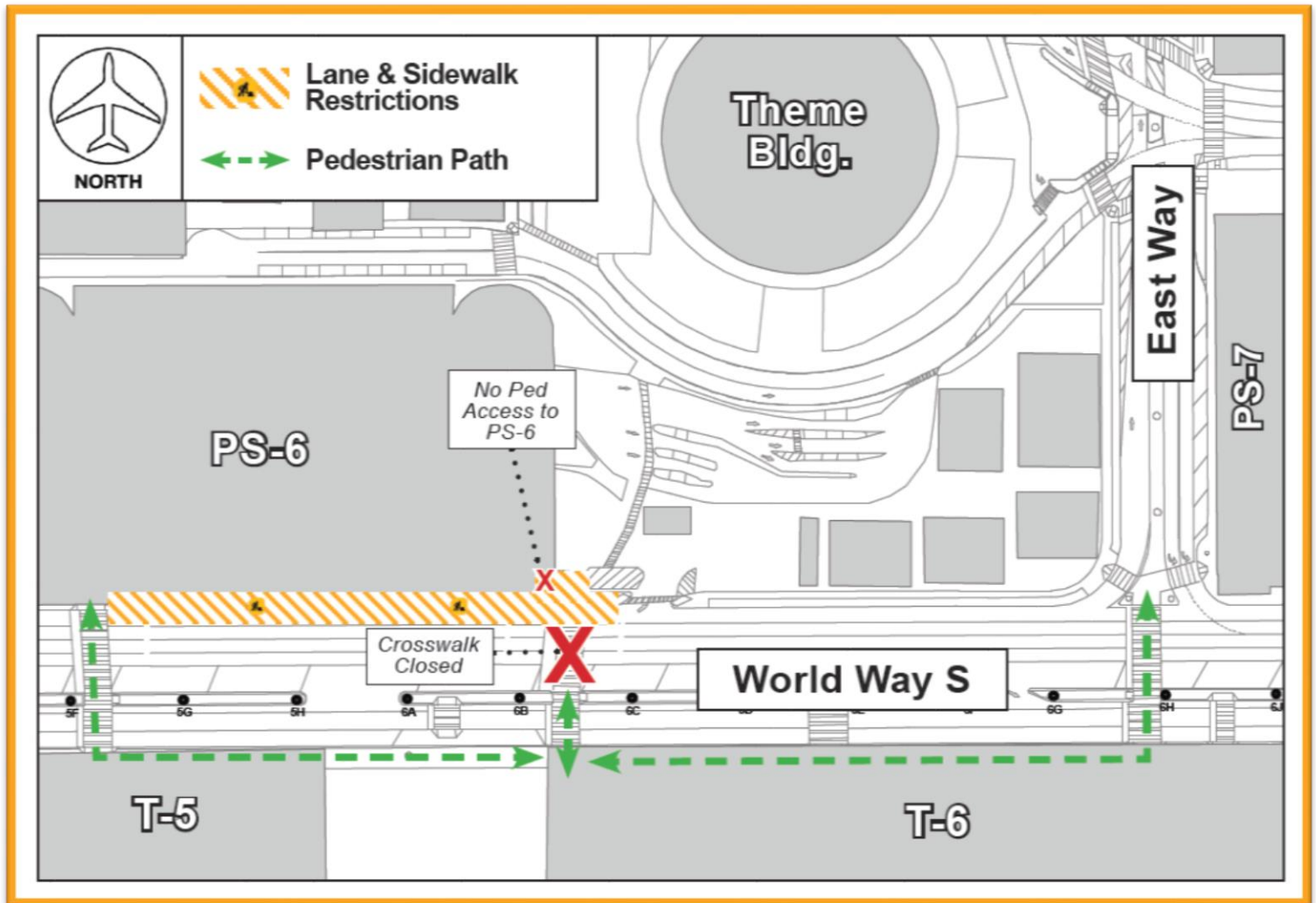


# Construction Hot Topics

Week of May 24, 2021

## 2. Terminal 6: Lane & Sidewalk Restrictions

- As crews install underground storm drains and sewer lines for the Automated People Mover project, nightly roadway, sidewalk and crosswalk restrictions will be in place near Terminal 6 adjacent to the south side of Parking Structure 6 through June 15, 2021 (12:30AM to 6AM)
- All vehicular traffic and shuttle operations will be maintained at all times
- Pedestrians will be detoured around construction; flaggers and signage will be in place to assist



Nightly Lane, Sidewalk & Crosswalk Restrictions through June 15, 2021

Change is in the Air(port).

**LAX** WAY BETTER. REALLY.

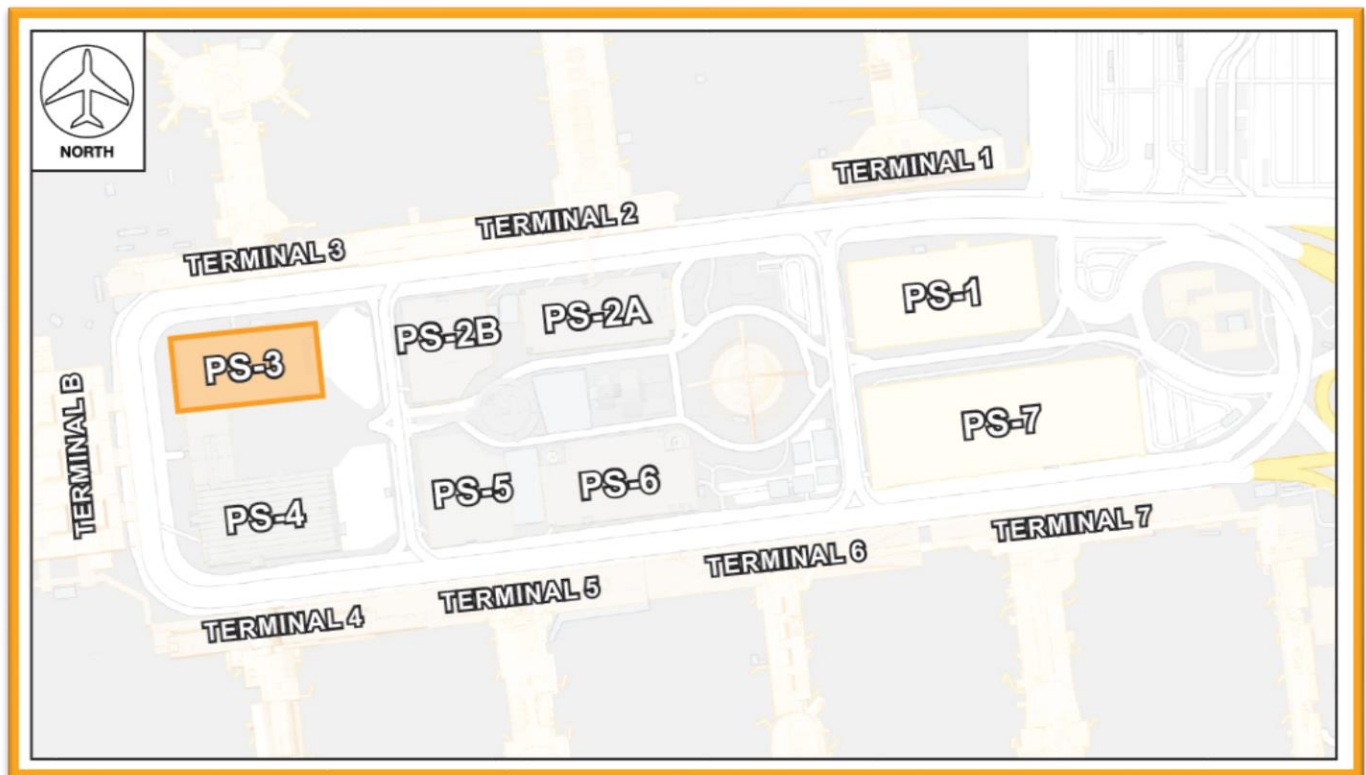


# Construction Hot Topics

Week of May 24, 2021

## 3. Parking Structure 3: Smart Parking Project

- Parking Structure 3 will experience a reduction in available parking stalls through December 2021 for the ABM Smart Parking Project
- Improvements include installation of electric vehicle chargers, PGS systems and pay on foot stations, painting and more
- Signage is posted to assist with wayfinding; access to and from the structure and vertical circulation is maintained at all times
- This project will be performed in all parking structures in the Central Terminal Area; watch Construction Hot Topics for updates



Example of PGS System (top) and Parking Structure 3 location (bottom)

Change is in the Air(port).

**LAX** WAY BETTER. REALLY.

