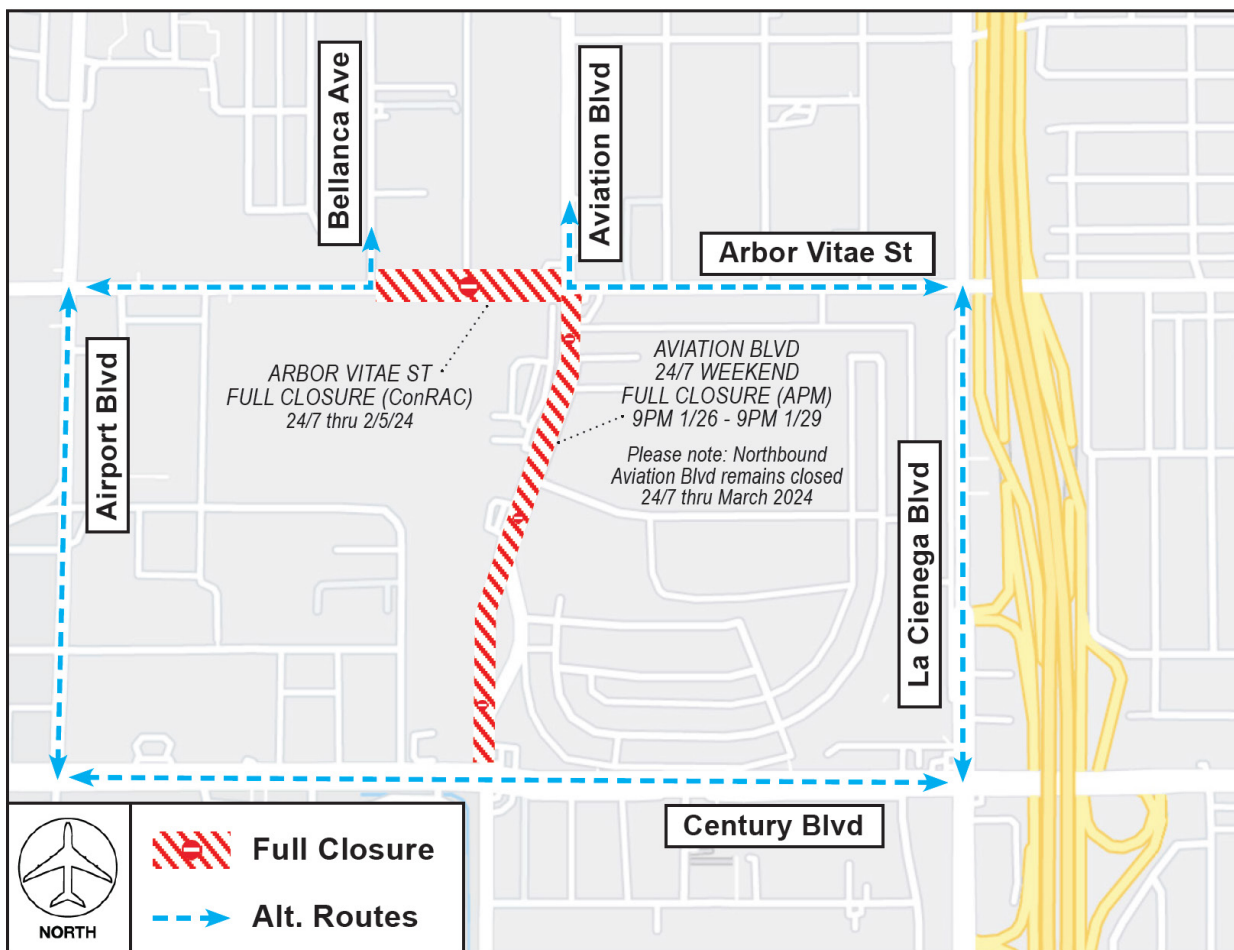


# CONSTRUCTION HOT TOPICS

## #1 FULL CLOSURE OF AVIATION BLVD JANUARY 26 - 29

TO FACILITATE WORK FOR THE AUTOMATED PEOPLE MOVER (APM) PROJECT, A 24/7 WEEKEND FULL CLOSURE OF AVIATION BLVD BETWEEN CENTURY BLVD AND ARBOR VITAE ST WILL BE IN PLACE FRIDAY, JANUARY 26 AT 9PM CONTINUOUS THROUGH MONDAY, JANUARY 29 AT 9PM.



### PLEASE NOTE:

Flaggers and detour signage will be in place to assist with the maintenance of traffic.



LAX Construction Hotline: 310-649-5292 LAXConstructionHotline@LAWA.org

flyLAX.com @flyLAXairport LAInternationalAirport

# CONSTRUCTION HOT TOPICS

## #2 SCHEDULED DOMESTIC WATER SHUTDOWNS AT SOUTH TERMINALS

TO FACILITATE WORK FOR LAX'S ROADWAY AND UTILITY ENABLING (RUE) PROJECT, DOMESTIC WATER SHUTDOWNS ARE SCHEDULED THIS WEEK DURING LIMITED OVERNIGHT HOURS PER THE FOLLOWING SCHEDULE:

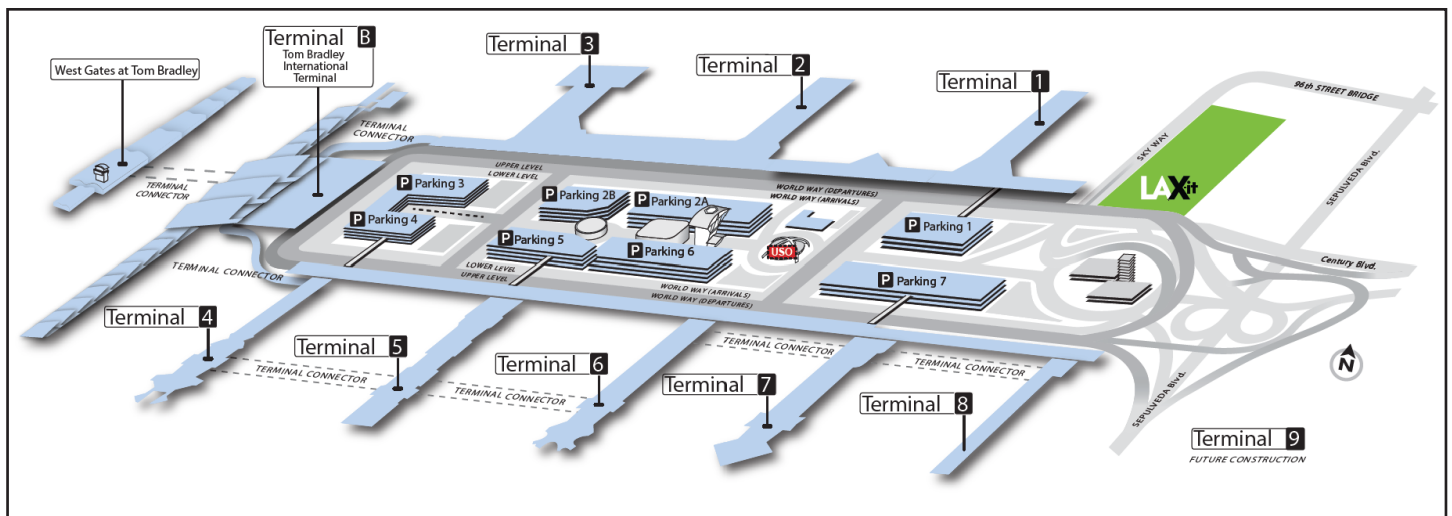
### ANTICIPATED SCHEDULE:

Terminal 8 (Concourse 8): Tuesday, Jan. 23

### WORK HOURS:

Nightly from 12:30AM to 4:00AM

Terminal 6 and Terminal 7 were scheduled for domestic water shutdowns during the week of January 15, but will be rescheduled for a future date (anticipated mid-February 2024). Watch Construction Hot Topics for more updates about this project and its impacts.



### PLEASE NOTE:

When domestic water is shut down during limited overnight hours, measures will be in place to mitigate impacts including the availability of bottled water, portable restrooms and hand wash stations. Signage will be in place to notify and direct guests and employees accordingly.



 LAX Construction Hotline: 310-649-5292  LAXConstructionHotline@LAWA.org

flyLAX.com   @flyLAXairport  LAInternationalAirport

# CONSTRUCTION HOT TOPICS

## #3 JAN '24: 24/7 CTA LANE RESTRICTIONS

THE MAP BELOW IS A COLLECTIVE SNAPSHOT OF ALL SCHEDULED 24/7 LANE RESTRICTIONS FOR CTA DEPARTURES AND ARRIVALS LEVEL ROADWAYS FOR THE MONTH OF JANUARY 2024.

### PLEASE NOTE:

This map only reflects 24/7 continuous lane closures in the CTA; other nightly lane closures / sidewalk restrictions may be in place to facilitate construction activities

### ACCESS MAINTAINED:

Traffic around the Central Terminal Area will be maintained at all times, as well as access to passenger pick-up and drop-off

### PLAN AHEAD:

Motorists should plan ahead for potential delays

