

California State Airport Noise Standards Quarterly Report

Fourth Quarter 2012



LAX

*Los Angeles
World Airports*

Los Angeles World Airports
Los Angeles International Airport

September 20, 2013

TABLE OF CONTENTS

California State Airport Noise Standards Quarterly Report

1. Division of Aeronautics Form 617
2. Incompatible Land Use Data
3. Daily Aircraft CNEL Data
4. Runway Utilization Report
 - Summary of Runway Use
 - Summary of Runway Flow
5. Summary of Actions

Attachment

Noise contour map

**SUMMARY OF STATISTICAL INFORMATION
FOR
CALIFORNIA DEPARTMENT OF TRANSPORTATION**

Los Angeles International Airport
Fourth Quarter 2012

1. Size of Noise Impact Area as defined in the Noise Standards (California Code of Regulations, Title 21, Chapter 2.5, Subchapter 6):

875.8 Acres

2. Estimated number of dwelling units included in the Noise Impact Area as defined in the Noise Standards:

12,425

3. Estimated number of people residing within the Noise Impact Area as defined in the Noise Standards:

42,712

4. Identification of aircraft type having highest takeoff noise level operating at this airport together with estimated number of operations by this aircraft type during the calendar quarter reporting period:

B747:4,579

5. Total number of aircraft operations during the calendar quarter: (Not Mandatory)

146,604

6. Number of Air Carrier operations during the calendar quarter: (Not Mandatory)

102,935

7. Percentage of Air Carrier operations by aircraft certificated under Federal Aviation Regulation (FAR) Part 36, Stage III. (Not Mandatory)

100 %

8. Estimated number of operations by General Aviation aircraft during the calendar quarter: (Not Mandatory)

2,685

9. Estimated number of operations by Military aircraft during the calendar quarter: (Not Mandatory)

638

LOS ANGELES INTERNATIONAL AIRPORT

Fourth Quarter 2012

Incompatible Land Use

Annual Noise Impact Accumulated by Noise Zone: CNEL 65, 70, and 75+

4Q12	Total Cumulative Noise Impact Areas - All Jurisdictions											
	<i>CNEL 65dB and Above</i>				<i>CNEL 70dB and Above</i>				<i>CNEL 75dB and Above</i>			
	Land Use	Dwelling			Population	Dwelling			Population	Dwelling		
	Acres	Units	Parcels		Acres	Units	Parcels		Acres	Units	Parcels	
Single Family	434.4	3079	3138	10834	84.3	580	587	2525	3.4	17	18	88
Multi Family	415	9321	2872	31813	113.3	2395	686	9810	5.9	64	21	346
Mobile Home	1	1	3	3	0	0	0	0	0	0	0	0
Schools	2.1	0	2	0	0	0	0	0	0	0	0	0
Churches	22.7	24	50	62	3.4	0	3	0	0	0	0	0
Hospitals	0.6	0	2	0	0	0	0	0	0	0	0	0
Total Incompatible	875.8	12425	6067	42712	201	2975	1276	12335	9.3	81	39	434

4Q12	Total Cumulative Noise Impact Areas - Westchester/Playa Del Rey											
	<i>CNEL 65dB and Above</i>				<i>CNEL 70dB and Above</i>				<i>CNEL 75dB and Above</i>			
	Land Use	Dwelling			Population	Dwelling			Population	Dwelling		
	Acres	Units	Parcels		Acres	Units	Parcels		Acres	Units	Parcels	
Single Family	10.7	76	78	182	0	0	0	0	0	0	0	0
Multi Family	21.7	922	328	2070	1.5	80	8	195	0	0	0	0
Mobile Home	0	0	0	0	0	0	0	0	0	0	0	0
Schools	0	0	0	0	0	0	0	0	0	0	0	0
Churches	1.3	1	1	2	0	0	0	0	0	0	0	0
Hospitals	0	0	0	0	0	0	0	0	0	0	0	0
Total Incompatible	33.7	999	407	2254	1.5	80	8	195	0	0	0	0

Date Printed: 08/20/2013

Parcels and dwelling units may not match for single family land uses due to subdivision.
Parcels for multifamily land uses reflect only the common area parcel, except for condominiums.

LOS ANGELES INTERNATIONAL AIRPORT

Fourth Quarter 2012

Incompatible Land Use

Annual Noise Impact Accumulated by Noise Zone: CNEL 65, 70, and 75+

4Q12	Total Cumulative Noise Impact Areas - South & South East LA											
	<i>CNEL 65dB and Above</i>				<i>CNEL 70dB and Above</i>				<i>CNEL 75dB and Above</i>			
	Land Use	Dwelling				Dwelling				Dwelling		
	Acres	Units	Parcels	Population	Acres	Units	Parcels	Population	Acres	Units	Parcels	Population
Single Family	42.9	353	356	1258	0	0	0	0	0	0	0	0
Multi Family	28.8	752	182	2753	0	0	0	0	0	0	0	0
Mobile Home	0	0	0	0	0	0	0	0	0	0	0	0
Schools	0	0	0	0	0	0	0	0	0	0	0	0
Churches	3.5	5	12	13	0	0	0	0	0	0	0	0
Hospitals	0	0	0	0	0	0	0	0	0	0	0	0
Total Incompatible	75.2	1110	550	4024	0	0	0	0	0	0	0	0

4Q12	Total Cumulative Noise Impact Areas - Lennox											
	<i>CNEL 65dB and Above</i>				<i>CNEL 70dB and Above</i>				<i>CNEL 75dB and Above</i>			
	Land Use	Dwelling				Dwelling				Dwelling		
	Acres	Units	Parcels	Population	Acres	Units	Parcels	Population	Acres	Units	Parcels	Population
Single Family	84.1	590	597	2835	52.8	368	372	1773	3.4	17	18	88
Multi Family	87.9	1406	502	6546	55.8	827	329	3978	5.9	64	21	346
Mobile Home	0	0	0	0	0	0	0	0	0	0	0	0
Schools	0	0	0	0	0	0	0	0	0	0	0	0
Churches	1.6	1	3	4	1.3	0	2	0	0	0	0	0
Hospitals	0	0	0	0	0	0	0	0	0	0	0	0
Total Incompatible	173.6	1997	1102	9385	109.9	1195	703	5751	9.3	81	39	434

Date Printed: 08/20/2013

Parcels and dwelling units may not match for single family land uses due to subdivision.
Parcels for multifamily land uses reflect only the common area parcel, except for condominiums.

LOS ANGELES INTERNATIONAL AIRPORT

Fourth Quarter 2012

Incompatible Land Use

Annual Noise Impact Accumulated by Noise Zone: CNEL 65, 70, and 75+

4Q12	Total Cumulative Noise Impact Areas - Del Aire											
	<i>CNEL 65dB and Above</i>				<i>CNEL 70dB and Above</i>				<i>CNEL 75dB and Above</i>			
	Land Use	Dwelling			Population	Dwelling			Population	Dwelling		
	Acres	Units	Parcels	Acres		Units	Parcels	Acres		Units	Parcels	
Single Family	0	0	0	0	0	0	0	0	0	0	0	0
Multi Family	0	0	0	0	0	0	0	0	0	0	0	0
Mobile Home	0	0	0	0	0	0	0	0	0	0	0	0
Schools	0	0	0	0	0	0	0	0	0	0	0	0
Churches	0	0	0	0	0	0	0	0	0	0	0	0
Hospitals	0	0	0	0	0	0	0	0	0	0	0	0
Total Incompatible	0	0	0	0	0	0	0	0	0	0	0	0

4Q12	Total Cumulative Noise Impact Areas - Athens											
	<i>CNEL 65dB and Above</i>				<i>CNEL 70dB and Above</i>				<i>CNEL 75dB and Above</i>			
	Land Use	Dwelling			Population	Dwelling			Population	Dwelling		
	Acres	Units	Parcels	Acres		Units	Parcels	Acres		Units	Parcels	
Single Family	53.8	402	424	1422	0	0	0	0	0	0	0	0
Multi Family	61.3	1229	397	4253	0	0	0	0	0	0	0	0
Mobile Home	0	0	0	0	0	0	0	0	0	0	0	0
Schools	0	0	0	0	0	0	0	0	0	0	0	0
Churches	1.6	4	7	14	0	0	0	0	0	0	0	0
Hospitals	0	0	0	0	0	0	0	0	0	0	0	0
Total Incompatible	116.7	1635	828	5689	0	0	0	0	0	0	0	0

Date Printed: 08/20/2013

Parcels and dwelling units may not match for single family land uses due to subdivision.
Parcels for multifamily land uses reflect only the common area parcel, except for condominiums.

LOS ANGELES INTERNATIONAL AIRPORT

Fourth Quarter 2012

Incompatible Land Use

Annual Noise Impact Accumulated by Noise Zone: CNEL 65, 70, and 75+

4Q12	Total Cumulative Noise Impact Areas - City of Inglewood											
	<i>CNEL 65dB and Above</i>				<i>CNEL 70dB and Above</i>				<i>CNEL 75dB and Above</i>			
	Land Use	Dwelling				Dwelling				Dwelling		
	Acres	Units	Parcels	Population	Acres	Units	Parcels	Population	Acres	Units	Parcels	Population
Single Family	138.1	958	979	3320	15.7	111	114	493	0	0	0	0
Multi Family	181.3	4073	1091	14157	46.5	1187	236	4976	0	0	0	0
Mobile Home	0.6	0	2	0	0	0	0	0	0	0	0	0
Schools	2.1	0	2	0	0	0	0	0	0	0	0	0
Churches	14.04	13	25	28	2.1	0	1	0	0	0	0	0
Hospitals	0.6	0	2	0	0	0	0	0	0	0	0	0
Total Incompatible	336.74	5044	2101	17505	64.3	1298	351	5469	0	0	0	0

4Q12	Total Cumulative Noise Impact Areas - City of El Segundo											
	<i>CNEL 65dB and Above</i>				<i>CNEL 70dB and Above</i>				<i>CNEL 75dB and Above</i>			
	Land Use	Dwelling				Dwelling				Dwelling		
	Acres	Units	Parcels	Population	Acres	Units	Parcels	Population	Acres	Units	Parcels	Population
Single Family	104.7	700	704	1818	15.8	101	101	259	0	0	0	0
Multi Family	34.1	939	372	2033	9.5	301	113	661	0	0	0	0
Mobile Home	0.4	1	1	3	0	0	0	0	0	0	0	0
Schools	0	0	0	0	0	0	0	0	0	0	0	0
Churches	0.7	0	2	0	0	0	0	0	0	0	0	0
Hospitals	0	0	0	0	0	0	0	0	0	0	0	0
Total Incompatible	139.9	1640	1079	3854	25.3	402	214	920	0	0	0	0

Date Printed: 08/20/2013

Parcels and dwelling units may not match for single family land uses due to subdivision.
Parcels for multifamily land uses reflect only the common area parcel, except for condominiums.

October	AIR1	PDR1	PDR2	PDR3*	ESG1	ESG2	ESG3	ESG4*	ESG5	DEL1*	WCH1*	WCH2	WCH3	WCH4*	WCH5	WCH6	ING1	ING2	ING3	ING4	ING6	ING5*	ING7*	ING8	LNX1	LNX2	LNX3	LNX4	ATH1*	ATH2	SLA1	SLA2*	SLA3	SLA4*	SLA5	SLA6*	SLA7	SLA8*	SLA9*
1 Mon	79	67	62	57	65	69	65	65	67	60	54	64		61	74	63	61	66	66		70	58	53	60	75	63	64	67	61	66	63	57	61	57	63	61	63	60	59
2 Tue	79	67	61	56	64	67	62		63		56	64	61	56	73	64	63	66	67		70	63	55	63	75	68	65	67	62	66	65	60	63	58	63	62	63	61	59
3 Wed	80	68	61	55	64	67	61	58	59	51	50	61	61	53	74	62	60	66	67		70	57	54	60	76	62	62	66	60	66	63	61	62	57	63	61	64	59	59
4 Thu	80	69	62	59	65	68	63	58	58	55	53	62	63	58	76	65	61	68	68		70	55	57	61	75	61	62	65	61	66	66	60	62	60	63	61	64	61	62
5 Fri	81	68	62	58	64	68	63	57	58	50	55	61	59	55	76	64	62	67	68		70	56	56	61	75	62	62	66	60	67	65	59	62	60	64	61	65	59	62
6 Sat	80	68	61	55	66	70	61	56	57	53	55	63	60	55	75	64	61	67	68		67	63	57	61	74	61	63	68	58	64	66	59	59	60	61	61	61	60	61
7 Sun	80	68	61	54	66	70	61	56	60	49	51	61	60	54	76	64	62	67	68		67	52	56	58	73	59	59	63	58	64	66	59	59	60	62	61	61	60	62
8 Mon	80	68	63	59	65	69	61	57	60	50	52	61	60	59	74	63	61	66	66		69	54	55	60	74	61	61	65	60	66	64	58	61	59	63	61	64	60	61
9 Tue	79	67	61	54	64	68	62	56	59	53	54	65	61	56	75	64	61	67	67		69	55	56	60	74	63	61	65	60	66	65	58	61	60	63	60	63	60	61
10 Wed	80	68	62	56	65	68	62	57	60	51	52	60	60	59	75	64	61	67	68		69	58	57	61	75	63	62	65	61	67	65	59	62	60	64	62	64	61	61
11 Thu	81	68	62	56	65	69	64	60	61	52	53	64	59	57	75	64	61	67	68		71	56	59	61	75	61	61	66	61	67	66	62	64	61	64	63	64	60	62
12 Fri	82	68	61	57	66	69	63	60	62	53	53	62	64	62	75	64	62	67	67		71	58	57	63	76	63	63	67	63	67	65	60	63	60	65	63	66	62	63
13 Sat	80	67	61	54	66	71	62	59	60	48	50	60	60	54	75	64	60	67	67		67	55	57	59	73	60	59	64	58	65	65	59	59	60		61	61	59	62
14 Sun	79	69	62	56	65	70	65	64	63	57	57	64	66	63	77	65	62	68	68		66	58	55	57	73	62	66	66	56	63	66	59	58	60	65	63	60	61	62
15 Mon	80	67	62	56	65	70	65	63	66	61	51	62	62	61	75	64	62	66	67		68	59	53	60	75	65	70	67	59	65	64	58	60	59	62	63	62	60	61
16 Tue	80	67	60	56	63	67	62	62	62	54	52	62	62	56	74	63	62	66	66		68	55	54	59	75	61	61	65	59	65	64	57	60	58	62	61	62	60	60
17 Wed	81	67	60	56	64	68	65	64	67	59	55	64	63	59	74	62	60	65	65		69	55	58	59	75	62	61	65	59	65	63	57	60	57	62	61	62	59	59
18 Thu	81	67	61	54	63	68	62	57	63	56	53	62	63	57	75	65	63	67	67		70	59	58	64	75	68	64	67	61	67	64	62	63	59	64	63	64	61	61
19 Fri	80	68	61	57	64	68	63	58	59	51	51	61	62	54	76	64	61	67	68		71	58	55	61	76	61	62	66	60	66	65	58	62	58	63	60	64	62	62
20 Sat	80	67	60	52	65	69	60	56		51	49	62	63	51	74	64	62	67	68		68	59	56	59	75	63	63	65	58	64	66	59	59	60	63	63	61		63
21 Sun	79	69	63	56	65	69	60	55		51	52	61	63	56	--	65	63	69	69		70	60	58	64	75	67	65	68	62	67	67	61	64	61	64	62	63	60	64
22 Mon	80	69	63	57	66	70	62	57	59	47	50	62	62	56	77	65	62	67	68		69	55	58	60	74	61	62	64	60	66	66	60	61	60	63	64	64	61	62
23 Tue	80	67	61	55	65	69	63	58	59	56	51	60	59	54	75	63	61	66	67		69	56	56	61	75	62	62	65	61	67	65	59	62	59	64	62	65	61	62
24 Wed	80	68	61	55	65	68	64	60	63	61	50	60	58	56	73	62	62	65	67		70	58	55	63	76	63	63	67	62	67	65	61	64	58	65	62	64	62	60
25 Thu	80	66	59	53	66	69	66	63	66	63			55	51	75	63	62	66	67		71	58	56	63	77	64	63	68	64	68	65	60	64	59	66	63	66	62	62
26 Fri	80	66	59	54	63	66	63	59	63	56		58	61	54	73	61	60	66	65		68	58	56	61	73	60	61	65	60	67	63	57	60	58	63	62	64	61	60
27 Sat	78	65	58	51	62	66	61	60	62	57	51	62	59	55	72	61	58	65	64		66	54	50	57	72	58	59	63	57	63	62	57	58	56		62	61	59	59
28 Sun	79	67	60	55	63	67	61	60	61	54	54	63	62	58	73	63	61	65	66		68	52	52	59	73	61	60	64	58	64	64	58	60	57	63	63	62	58	59
29 Mon	80	67	61	57	63	67	61	58	62	56	56	64	64	60	75	63	61	66	66		68	55	53	58	74	63	61	65	58	64	63	57	61	58	61	58	61	57	59
30 Tue	79	68	61	55	63	67	61	58	59	50	49	60	59	54	74	63	60	66	67		72	59	52	61	77	62	63	67	61	67	63	57	62	57	64	60	64	60	60
31 Wed	80	68	62	56	64	68	62	57	59	51	53	61	59	54	75	64	61	67	67		69	57	56	61	75	61	63	66	60	66	65	59	62	59	63	62	64	61	61

* = Not Required for Title 21 Reporting

November	AIR1	PDR1	PDR2	PDR3*	ESG1	ESG2	ESG3	ESG4*	ESG5	DEL1*	WCH1*	WCH2	WCH3	WCH4*	WCH5	WCH6	ING1	ING2	ING3	ING4	ING6	ING5*	ING7*	ING8	LNX1	LNX2	LNX3	LNX4	ATH1*	ATH2	SLA1	SLA2*	SLA3	SLA4*	SLA5	SLA6*	SLA7	SLA8*	SLA9*		
1 Thu	81	69	62	56	65	68	61	57	57	48	52	62	61	57	75	64	61	67	67		70	59	57	61	76	62	63	67	63	67	65	59	62	60	64	62	64	61	61		
2 Fri	81	69	62	58	65	68	62	56	58	52	54	63	63	62	75	64	61	68	68		70	57	56	62	75	61	62	66	61	67	66	60	62	60	64	64	65	60	62		
3 Sat	80	68	61	55	65	68	62	62	61	54	57	64	63	63	75	64	60	66	66		69	56	55	60	74	62	62	66	59	65	64	57	61	59	65	63	63	60	60		
4 Sun	80	66	58	52	64	68	65	64	67	62	55	65	63	59	74	62	60	64	65		67	51	51	59	73	61	61	64	58	64	62	57	59	57	62		62	60	59		
5 Mon	79	65	61	54	63	66	61	58	63	61	59	63	63	61	75	62	61	64	65		68	51	52	58		60	61	64	59	65	63	56	60	57	63		62	58	58		
6 Tue	80	67	59	54	63	67	64	57	59	54	54	63	61	56	74	62	60	65	66		71	56	53	59		61	62	65	59	67	63	57	61	58	63	62	63	60	60		
7 Wed	80	68	61	55	63	67	61	57	57	50		60	58	52	74	62	61	66	66		72	60	55	63		64	64	69	63	68	64	60	64	59	66	60	66	60	66	62	61
8 Thu	80	69	62	57	65	69	63	58	58	53	--	62	62	57	76	64	62	68	68		70	58	58	62	75	63	63	65	61	66	66	60	62	60	64	64	64	64	61	62	
9 Fri	79	70	63	57	66	69	65	60	63	59	--	61	62	58	77	65	65	69	69		73	59	58	66	75	69	65	67	63	69	66	62	65	61	66	62	67	63	63		
10 Sat	80	67	60	55	64	68	63	59	62		--	57	55	51	73	62	60	65	66		68	56	56	61	73	61	61	64	61	64	64	59	62	58	62	63	63	60	61		
11 Sun	80	66	60	52	64	68	63	60	64	58	--	64	57	49	74	62	59	65	66		69	54	52	59	74	60	61	65	59	65	64	57	62	58	63	62	63	60	60		
12 Mon	78	65	60	52	61	66	63	60	65	60	--	59	58	53	72	61	59	63	64		66	50	49	57	72	59	59	63	57	63	62	55	59	57	61	62	61	60	57		
13 Tue	78	64	56	56	61	66	63	59	65	59		57	58	51	72	60	59	62	63		66	50	48	57	71	57	57	62	56	63	61	53	58	55	61	61	60	59	56		
14 Wed	80	67	60	55	64	69	65	62	66	57	56	65	65	62	74	63	60	65	65		68	54	51	59	76	61	61	64	58	65	63	61	59	57	62	62	62	58	60		
15 Thu	81	68	62	56	65	70	64	62	63	54	59	63	59	53	75	63	61	66	67		72	58	55	62	77	63	63	68	62	68	64	59	63	60	65	63	65	61	61		
16 Fri	81	69	64	58	65	69	64	58	61	53	54	63	60	53	74	63	61	66	67		70	56	55	61	75	61	62	66	62	67	65	59	62	59	64	62	65	62	64		
17 Sat	81	68	61	54	64	67	60	55	56	49	52	62	59	53	74	63	59	66	66		70	57	55	60	74	60	63	65	59	66	64	57	61	58	63	60	63	59	60		
18 Sun	79	71	62	56	64		62	--	59	54	52	59	61	59	75	64	61	66	67		71	60	55	62	77	63	64	67	62	68	65	59	63	60	65	62	66	62	62		
19 Mon	79	69	63	57	64		63	--	62	52	55	64	64	60	74	64	61	66	67		68	55	55	60	73	61	61	65	59	65	65	59	61	60	63	61	63	61	60		
20 Tue	80	68	62	57	64		63	60	62	56	58	67	63	59	75	64	61	67	68		69	56	55	61	74	62	62	66	61	66	65	60	62	59	64	63	64	60	61		
21 Wed	80	69	63	59	64		63	60	60	52	58	66	63	59	76	64	62	68	68		72	59	58	63	77	65	64	68	62	68	66	61	64	60	66	63	66	61	62		
22 Thu	80	67	61	52	62		59	55	58	50	50	59	56	51	72	61	58	64	64		70	56	53	61	76	62	63	67	61	67	62	57	62	57	64	58	65	60	59		
23 Fri	78	66	59	55	62		62	61	59	52	53	60	59	54	73	61	59	65	66		71	59	52	62	76	61	61	66	62	67	63	58	63	57	65	59	65	61	60		
24 Sat	78	68	61	56	63		65	64	65	60	58	64	63	61	75	63	63	67	67		70	58	54	62	75	64	63	67	61	68	65	58	62	58	65	63	65	62	61		
25 Sun	78	69	63	55	63		61	57	59	47	51	62	59	54	75	64	61	67	68		71	56	55	60	76	61	62	66	60	67	65	59	62	58	64	60	63	62	60		
26 Mon	80	69	64	58	65		63	59	61	50	52	63	62	59	75	64	61	67	68		70	55	57	61	74	61	61	65	60	66	66	60	62	61	64	61	64	60	61		
27 Tue	79	68	62	55	64		63	57	59	52	48	60	61	56	75	64	62	67	68		70	57	57	62	74	61	62	66	60	67	65	59	62	60	64	62	65	61	62		
28 Wed	81	69	63	57	64		62	58	58	50	53	63	59	52	75	63	61	67	68		70	56	56	61	74	62	61	65	60	67	65	59	61	60	63	62	64	61	61		
29 Thu	82	69	63	56	64		61	56	59	54	54	65	59	53	75	63	61	66	67		70	57	53	61	75	64	63	66	61	66	64	58	62	58	64	61	64	61	61		
30 Fri	81	69	62	54	64		62	55	58	53	53	63	62	58	76	64	61	67	68		72	59	56	63	78		64	68	62	69	66	59	64	60	66	61	66	63	62		

* = Not Required for Title 21 Reporting

December	AIR1	PDR1	PDR2	PDR3*	ESG1	ESG2	ESG3	ESG4*	ESG5	DEL1*	WCH1*	WCH2	WCH3	WCH4*	WCH5	WCH6	ING1	ING2	ING3	ING4	ING6	ING5*	ING7*	ING8	LN1	LN2	LN3	LN4	ATH1*	ATH2	SLA1	SLA2*	SLA3	SLA4*	SLA5	SLA6*	SLA7	SLA8*	SLA9*
1 Sat	79	69	62	55	64		63	57	60	52	52	60	60	57	74	63	64	66	67		70	57	55	61	75	60	62	65	58	66	65	58	61	59	63	59	63	60	61
2 Sun	79	69	62	56	64		62	57	58	47	52	61	61	56	75	63	61	67	68		70	55	55	61	74	61	61	65	58	66	65	58	61	60	63	62	63	60	61
3 Mon	78	69	62	57	63		61	56	59	51	54	63	62	59	76	64	62	68	69		70	55	57	62	74	64	71	65	61	66	66	60	61	61	63	63	64	59	61
4 Tue	81	68	62	56	64		63	59	61	55	54	65	62	61	75	63	62	67	68		69	55	56	61	73	62	62	64	60	66	65	59	61	60	63	62	64	60	61
5 Wed	80	69	63	56	64	68	62	59	60	51	55	66	60	60	78	65	63	69	70		69	55	59	60	74	61		65	59	65	68	60	61	61	62	65	62	62	63
6 Thu	81	69	63	56	64	68	63	58	61	57	54	62	59	56	75	62	63	67	67		72	61	56	64	76	70	62	69	64	68	66	62	65	60	66	63	66	63	61
7 Fri	80	68	62	55	64	68	62	59	60	54	55	64	65	58	79	65	64	69	70		70	56	59	62	74	62	62	65	60	67	68	61	61	62	64	63	64	63	64
8 Sat	80	67	62	55	64	67	60	55	57		53	60	61	54	74	61	60	68	66		70	57	61	61	76	62	63	67	60	67	64	57	62	58	64	59	67	60	59
9 Sun	80	69	63	57	64	69	62	57	61	56	53	61	61	59	74	62	60	66	67		70	56	56	63	75	62	--	66	61	67	65	60	62	60	64	62	64	61	61
10 Mon	79	68	62	56	64	68	63	60	63	59	56	65		62	74	62	61	66	66		69	54	53	60	74	61	--	65	60	65	64	58	61	59	63	64	63	59	59
11 Tue	80	68	62	56	64	68	63	59	63	55	56	65	64	60		62	61	66	67		70	57	55	61	75	61	--	65	60	66	65	59	62	59	64	64	64	61	60
12 Wed	80	69	63	56	66	70	64	61	59	53	55	64	63	57	74	62	61	66	66		71	59	56	62	75	63	--	67	63	67	65	59	63	60	65	62	64	62	60
13 Thu	80	69	63	56	66	71	65	61	63	56	53	60	59	56	75	63	61	67	67		70	57	57	63	75	63	--	66	62	67	66	61	63	60	65	62	65	61	60
14 Fri	81	70	64	57	65	69	65	63	65	59	50	62	59	55	75	62	62	67	68		70	58	56	62	74	63	--	66	61	68	66	61	62	61	64	63	65	61	62
15 Sat	80	69	63	55	65	69	64	60	62	56	50	59	58	54	73	61	61	66	66		69	59	55	62	74	65	--	66	61	67	64	60	62	60	64	62	65	63	60
16 Sun	80	69	64	56	64	68	63	59	62	55	51	61	54		74	62	61	66	67		70	56	56	61	75	60	--	66	62	67	65	60	63	60	65	63	65	60	62
17 Mon	80	69	64	58	65	69	63	61	61	56	51	61	58	56	75	64	63	67	68		70	58	56	61	75	62	--	66	61	67	66	59	62	60	64	61	65	61	62
18 Tue	79	68	63	56	66	70	65	61	62	60	54	63	61	56	75	64	63	67	68		70	58	58	62	75	65		66	62	66	66	61	63	60	64	65	64	61	61
19 Wed	80	66	60	52	66	69	66	63	65	61	52	60	58		73	61	60	64	66		70	57	53	62	76	63		67	62	67	63	60	63	57	65	63	66	60	59
20 Thu	80	67	61	54	64	69	65	63	66	60	46	57	54		72	60	60	64	65		69	53	56	59	72	60		64	59	65	63	58	60	57	63	63	62	59	58
21 Fri	81	69	63	57	64	69	65	62	66	61	54	63		61	75	64	62	67	68		70	59	55	63	75	64		66	61	67	65	59	62	59	65	65	65	62	61
22 Sat	80	69	64	57	65	69	64	61	65	58	57	65	61	58	75	64	62	67	68		70	55	57	62	75	62		66	61	67	66	60	62	60	64	63	64	64	62
23 Sun	81	69	64	57	66	69	63	58	59	50	52	63	61	56	75	64	61	67	67		70	57	57	64	75	64		66	61	66	66	59	62	61	64	64	64	63	61
24 Mon	78	66	62	56	64	68	62	58	61	62	50	61	60	56	72	65	65	65	66		70	63	59	66	74	67		68	64	67	63	62	64	59	64	66	64	63	60
25 Tue	78	68	62	55	63	67	62	57	61	57	53	61	64	60	73	63	61	65	66		68	54	55	61	74	60		65	60	66	65	59	62	59	64	64	64	60	61
26 Wed	79	70	64	57	65	70	65	60	63	58	54	63	60	60	75	64	63	67	68		70	57	56	62	75	65		66	64	67	66	60	63	60	65	61	65	61	61
27 Thu	79	69	63	54	66	70	66	63	66	61	52		55	53	75	64	62	67	68		69	56	57	61	74	61		65	63	66	66	60	62	61	65	64	65	62	61
28 Fri	80	69	64	57	65	69	65	62	66	59	53	62	63	59	74	63	62	66	67		70	56	55	62	74	63		66	62	68	65	60	63	60	65	65	65	61	60
29 Sat	78	66	61	55	63	68	65	62	65	63	54	62	62	58	72	67	68	66	67		71	65	62	68	75	73		70	66	68	64	65	66	61	66	67	65	64	59
30 Sun	78	67	61	51	64	69	65	63	66	63	47	56	55	53	74	64	65	66	68		71	64	58	66	76	72		70	66	68	66	64	66	60	67	66	66	65	61
31 Mon	78	66	62	55	65	69	65	62	64	58	51	61	59	56	72	62		65	65		68	54	54	60	73	61		64	60	66	63	59	61	59	63	65	63	62	61

* = Not Required for Title 21 Reporting



Runway Utilization Report
 Summary of Runway Use (Average)
 Los Angeles International Airport

Period : 10/01/2012 to 12/31/2012

Airline : ALL

Aircraft : ALL

Time Period	Percent Daily Operations Per Runway								Average Operations	Runway Complex		Runway Flow		In Board	Out Board	
	06L	06R	07L	07R	24L	24R	25L	25R		South	North	West	East			
Departures																
Total Hours																
24 Hours	<1%	<1%	1%	<1%	38%	1%	6%	52%	788	60%	40%	98%	2%	93%	7%	
CNEL Hours																
0700 - 1900	<1%	1%	2%	<1%	42%	1%	5%	49%	540	56%	44%	97%	3%	93%	7%	
1900 - 2200	<1%	<1%	<1%	<1%	40%	<1%	8%	51%	92	59%	41%	99%	1%	92%	8%	
2200 - 0700	<1%	<1%	1%	<1%	25%	<1%	9%	63%	156	74%	26%	98%	2%	90%	10%	
Contra Hours																
Midnight - 0630	0%	<1%	1%	<1%	15%	<1%	14%	68%	68	84%	16%	98%	2%	85%	15%	
0630 - Midnight	<1%	<1%	1%	<1%	40%	1%	5%	51%	720	58%	42%	98%	2%	93%	7%	
Arrivals																
Total Hours																
24 Hours	1%	3%	<1%	1%	1%	43%	48%	2%	787	52%	48%	94%	6%	7%	93%	
CNEL Hours																
0700 - 1900	1%	<1%	<1%	1%	1%	46%	49%	1%	518	52%	48%	97%	3%	3%	97%	
1900 - 2200	<1%	<1%	<1%	<1%	2%	46%	48%	3%	152	51%	49%	99%	1%	6%	94%	
2200 - 0700	1%	17%	6%	3%	1%	30%	40%	2%	117	50%	50%	73%	27%	26%	74%	
Contra Hours																
Midnight - 0630	2%	45%	15%	7%	<1%	8%	21%	2%	45	44%	56%	32%	68%	62%	38%	
0630 - Midnight	<1%	<1%	<1%	1%	2%	45%	49%	2%	742	52%	48%	98%	2%	3%	97%	

All values are rounded to the nearest whole number.



Runway Utilization Report
 Summary of Runway Flow (Average)
 Los Angeles International Airport

Period: 10/01/2012 to 12/31/2012

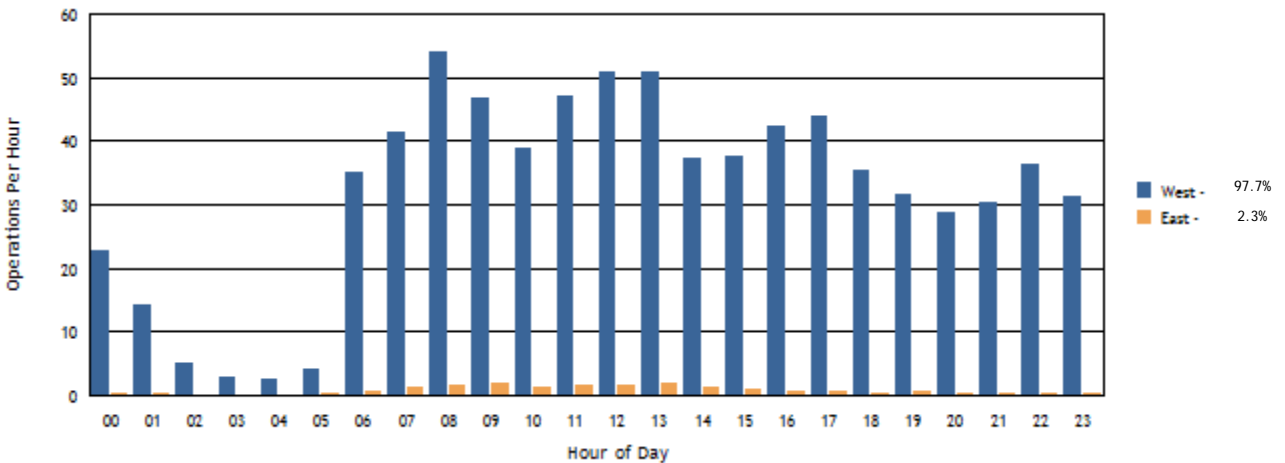
Airline : ALL

Aircraft : ALL

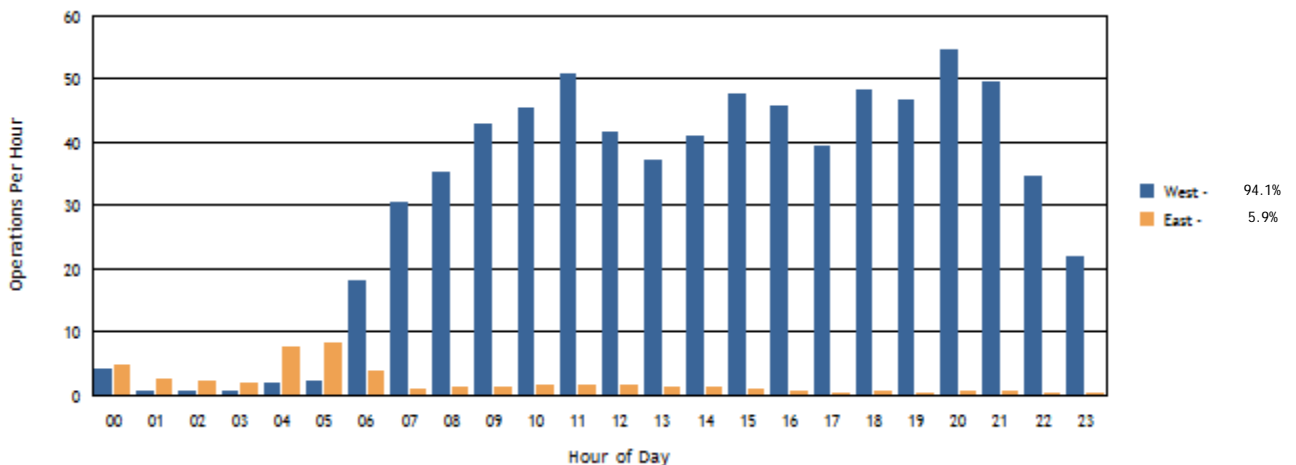
Time Period	Departures			Arrivals			Departures		Arrivals	
	West	East	Average	West	East	Average	West	East	West	East
Total Hours										
24 Hours	770	18	788	740	47	787	98%	2%	94%	6%
CNEL Hours										
0700-1900	526	15	540	505	13	518	97%	3%	97%	3%
1900-2200	91	1	92	151	2	152	99%	1%	99%	1%
2200-0700	154	2	156	85	32	117	98%	2%	73%	27%
Contra Hours										
Midnight - 0630	67	1	68	14	31	45	98%	2%	32%	68%
0630 - Midnight	703	17	720	726	16	742	98%	2%	98%	2%

All percentages are rounded to the nearest whole number.

Departures Per Hour by Operational Direction



Arrivals Per Hour by Operational Direction



Summary of Actions Taken by LAWA to Comply with the Specific Requirements Imposed by Conditions of the Current Noise Variance for Los Angeles International Airport

Fourth Quarter 2012

The Los Angeles World Airports (LAWA) continuously works to operate an airport that maintains the highest possible environmental quality of life for surrounding communities. To that end, LAWA continues to take the following actions:

- LAWA continues to implement its Aircraft Noise Mitigation Program (ANMP), designed to fund the mitigation of all incompatible land uses within the noise impact boundary as defined in the State Noise Standards. LAWA updates the ANMP report periodically to ensure that it reasonably represents the mitigation and funding programs that are in place.
- With each second quarter Quarterly Report, LAWA submits an annual update of the ANMP. This update includes the number of dwellings acoustically insulated, the cost of the program, the anticipated funding availability, and the anticipated completion date of the project.
- LAWA continues to monitor and enforce, as appropriate, all of its informal noise abatement procedures in place at LAX, including but not limited to the early turn program, preferential runway use procedures and over ocean operations procedures.
- LAWA continues to monitor and enforce its maintenance run-up curfew (2300-0600). When applicable, LAWA will include with each Quarterly Report, information regarding monitoring and enforcement activities undertaken during the quarter. There were no enforcement actions reported during the fourth quarter 2012.
- LAWA will continue to evaluate its existing informal noise abatement procedures, and to modify those procedures when necessary.
- LAWA continues its community response efforts by cataloging and responding to aircraft noise related citizen complaints.

- LAWA continues to submit to the State of California Department of Transportation (CalTrans) and the County of Los Angeles the required Quarterly Reports. These reports depict the noise impact area, and report on the incompatible land uses along with the daily and annual CNEL values at each monitoring station.
- With each Quarterly Report, beginning the second quarter 2005, LAWA continues to include tabular data and graphical illustrations describing and comparing the level and type of usage for each runway at LAX during the quarter.