



Statistical Update on LAX Aircraft Operations

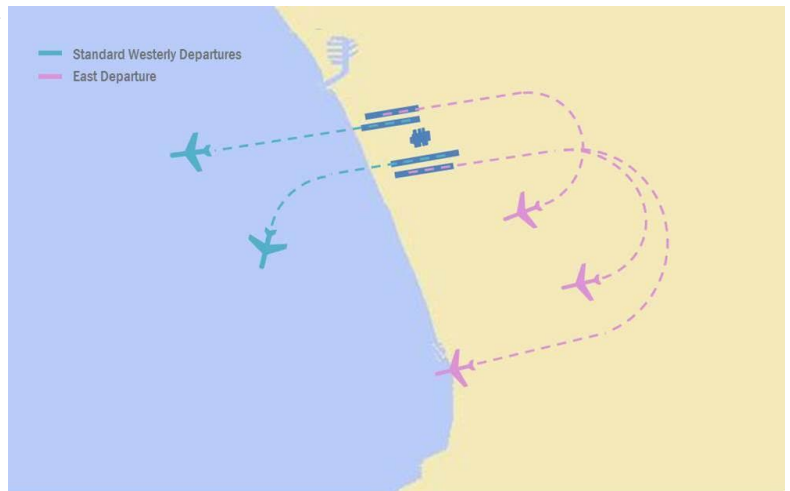
- East Departures
- Early Turns
- Go-arounds
- Palos Verdes Overflights

January 18, 2023

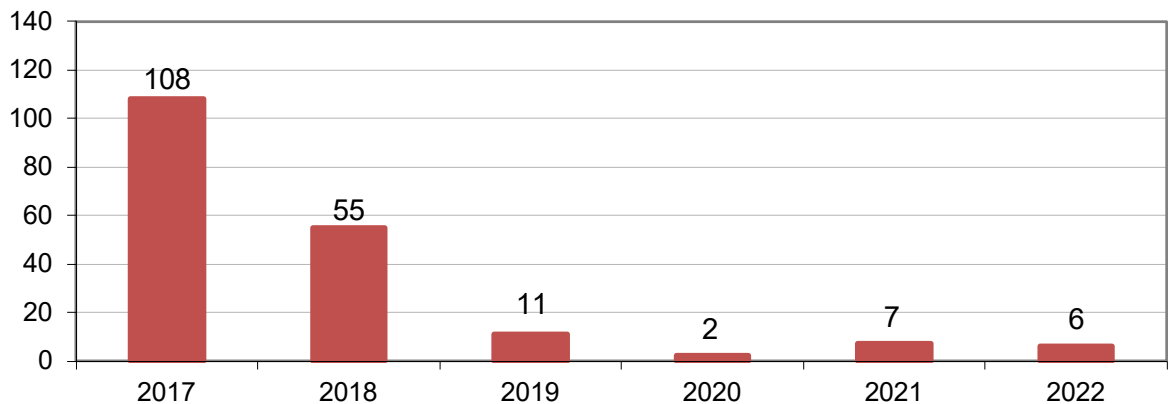
LAX/Community Noise Roundtable

Non-Conforming East Departures Midnight to 6:30 AM

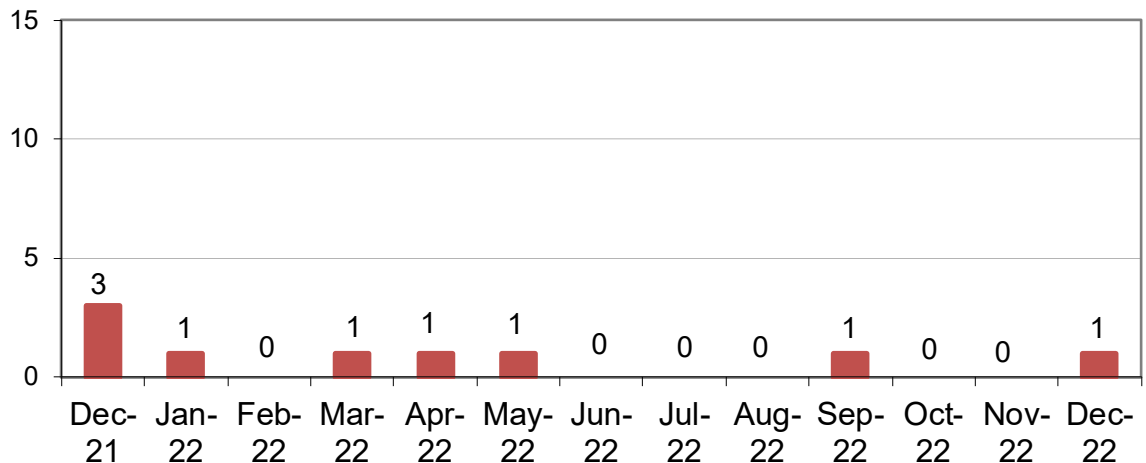
The graphs below show a summary of aircraft operations departing to the east while the airport is still conducting westerly departures between midnight and 6:30 a.m. These individual easterly departures usually occur when the pilot of a heavy aircraft (e.g. B747s) determines that the tail wind is too great for the weight of the aircraft and requests to depart east into the wind for aircraft safety.



Annual Comparison

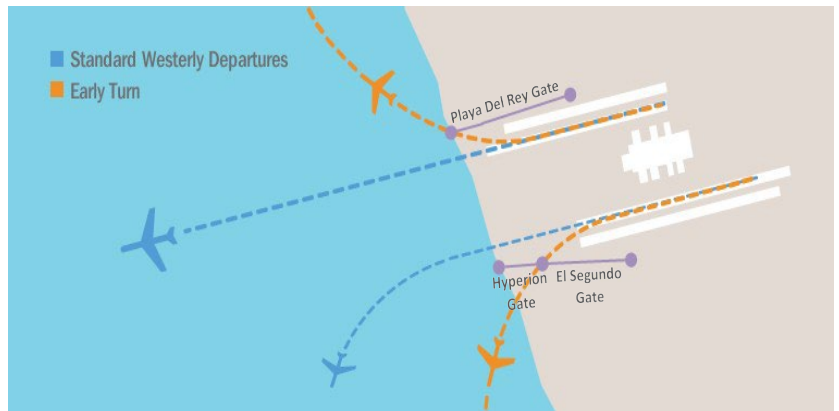


Monthly Comparison

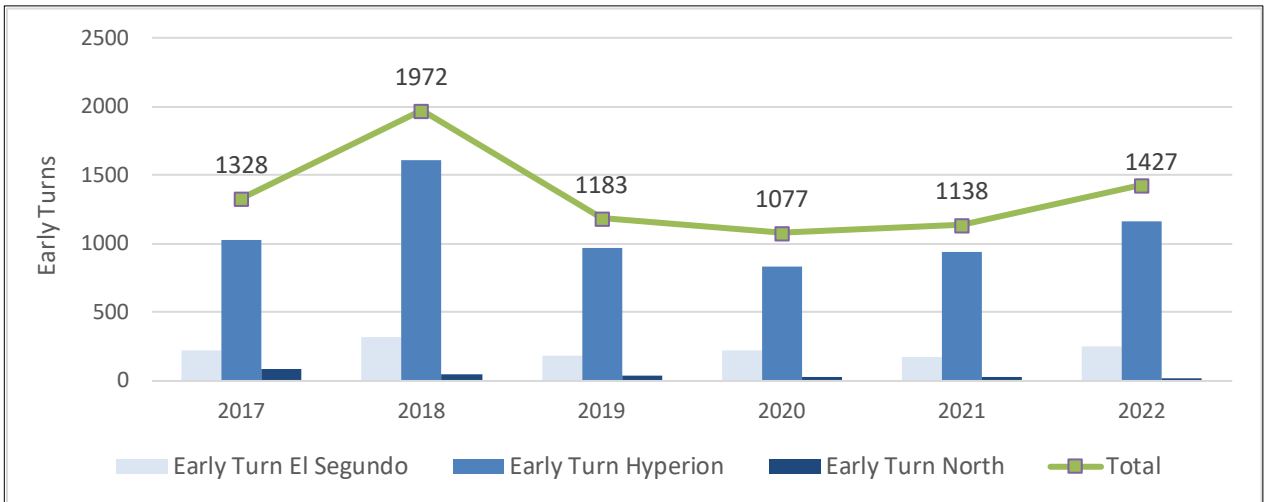


Early Turns

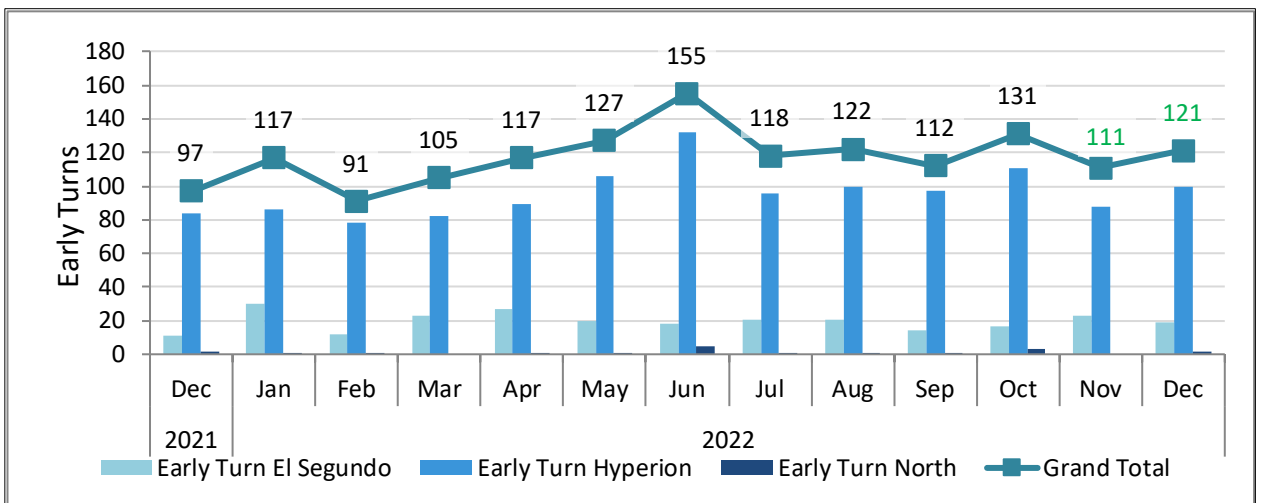
An "early turn" occurs when an aircraft on a westerly departure from any of the four LAX runways initiates a turn prior to reaching the shoreline that results in the aircraft flying over the community to either the north or south of the airport.



Annual Comparison



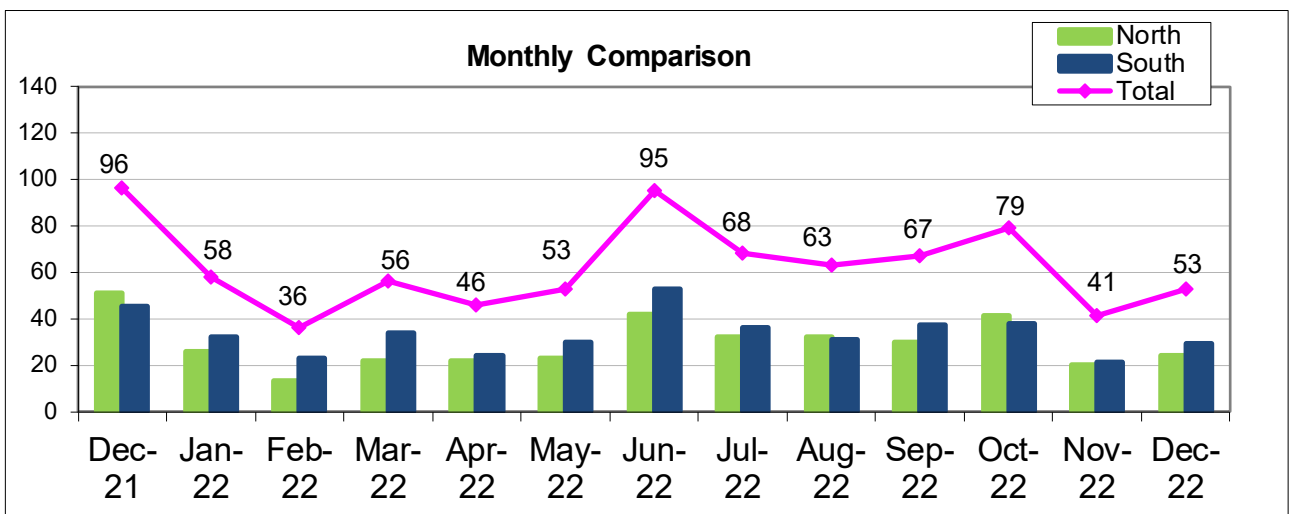
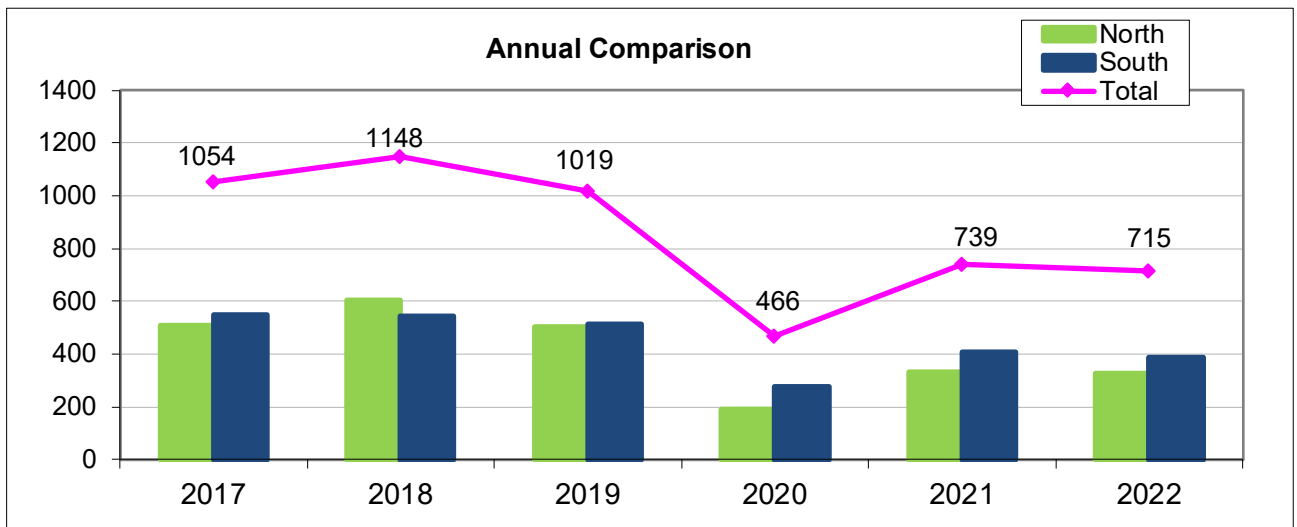
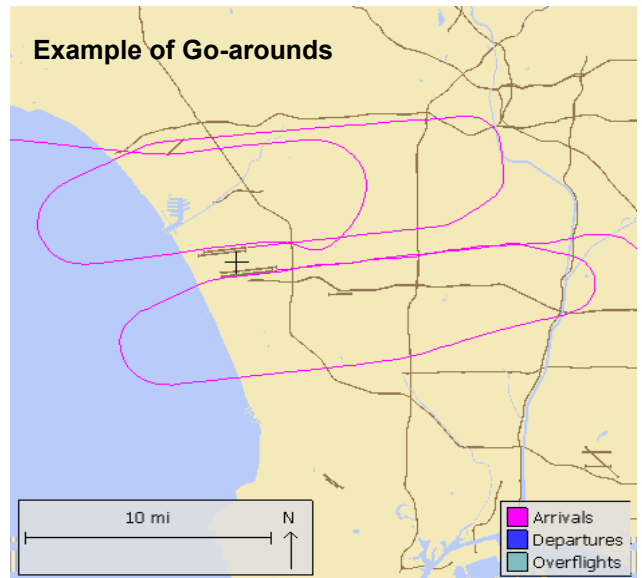
Monthly Comparison



Note: A preliminary number is shown for Early Turns that occurred in November and December 2022. A final number may vary slightly after investigation is complete.

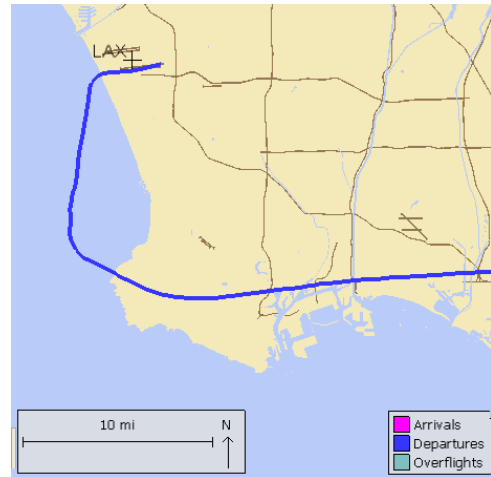
Go-Arounds

Go-arounds usually occur when aircraft are unable to land on their first attempt and would have to circle back around to rejoin the arrival route to land at LAX. The graphs below provide statistics for the number of go-arounds at LAX.

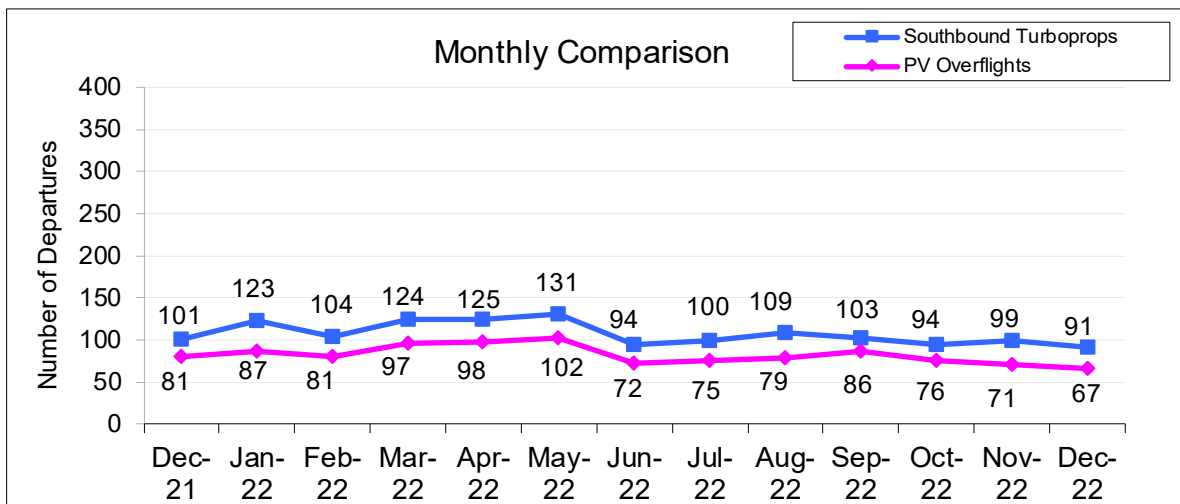
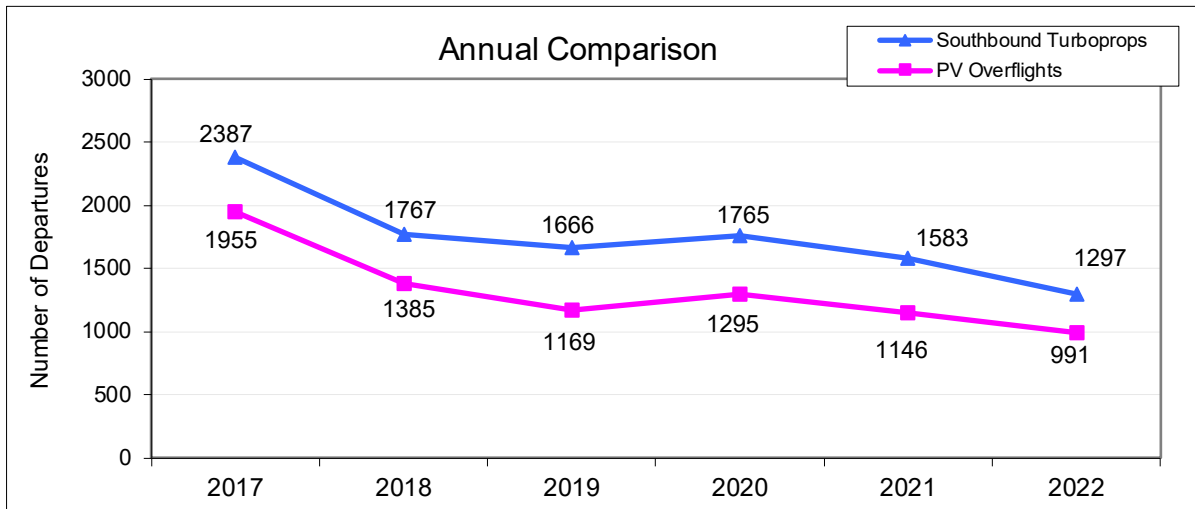


The graphs below show statistics of southbound turboprop aircraft that depart from LAX and fly over the Palos Verdes Peninsula, following an established FAA departure route.

Sample Turboprop Departure Flight Track



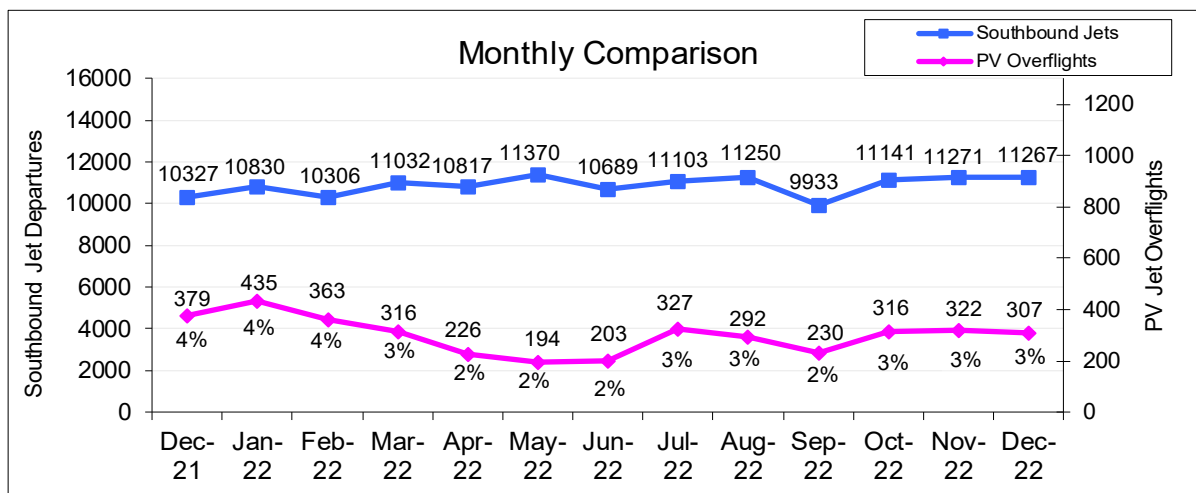
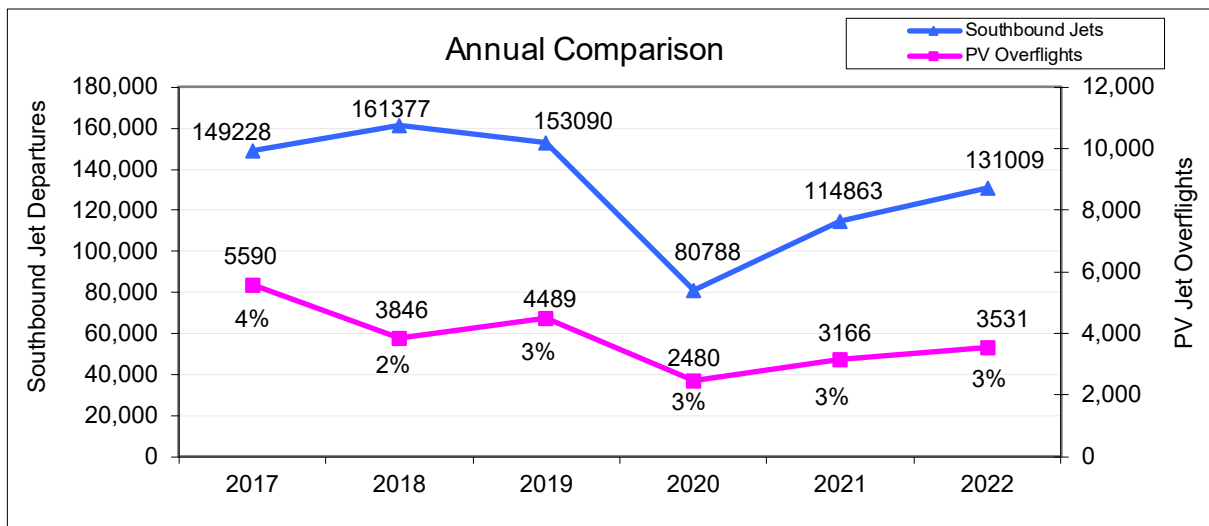
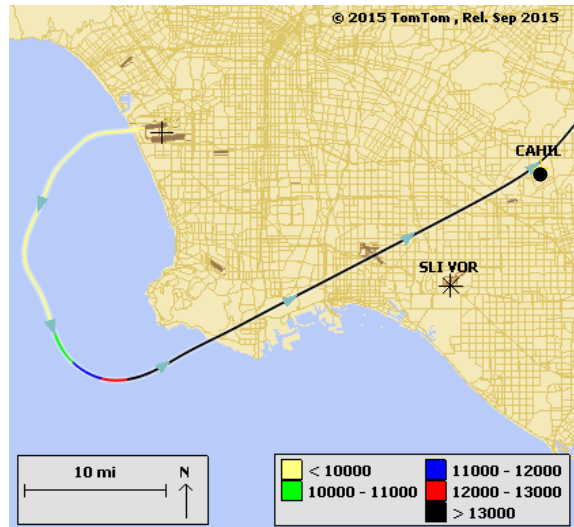
Note: Prior to SkyWest's fleet mix change (turboprop to jet aircraft) in early 2015, the number of southbound turboprop departures was about 800 per month, with around 300 aircraft flying over the PV Peninsula.



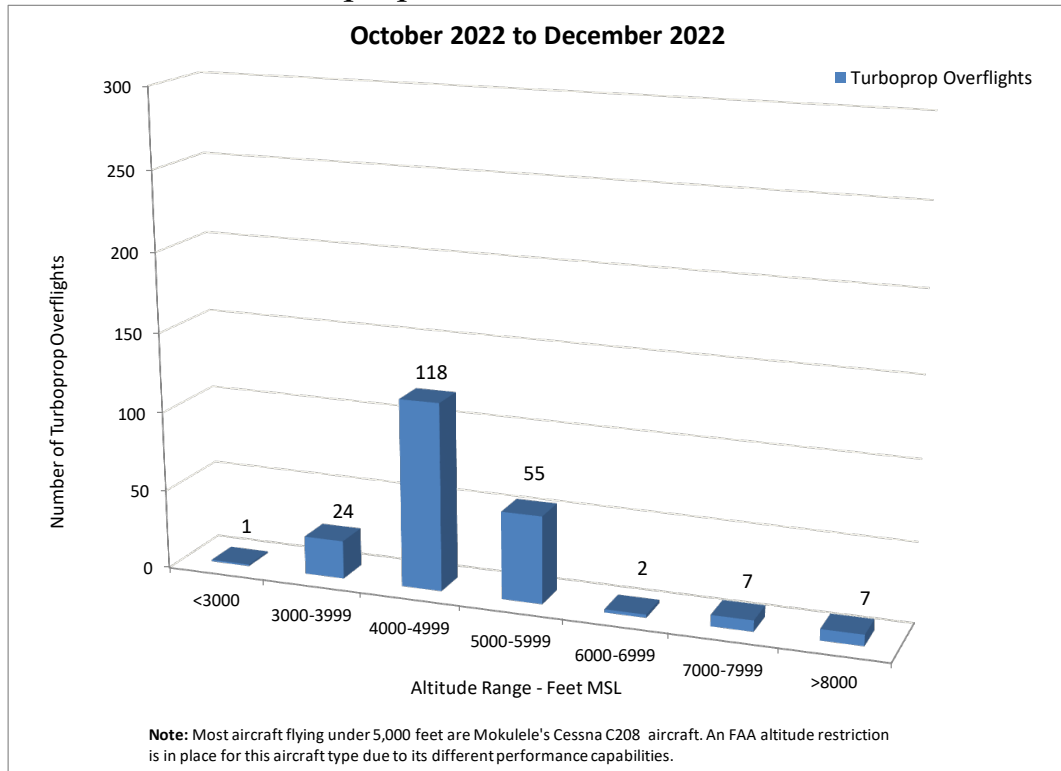
Palos Verdes Peninsula – Jet Overflights

The graphs below show the total number of jets turning south upon departure from LAX and the number of those departures that fly over the Palos Verdes Peninsula.

Sample Jet Departure Flight Track Over PV Peninsula



Turboprop Altitudes over PV Peninsula



Jet Altitudes over PV Peninsula

