



# LAX Procedural Amendments Implemented June 15, 2023

ILS or LOC RWY 25L  
RNAV (GPS) Y RWY 25L



**Federal Aviation  
Administration**

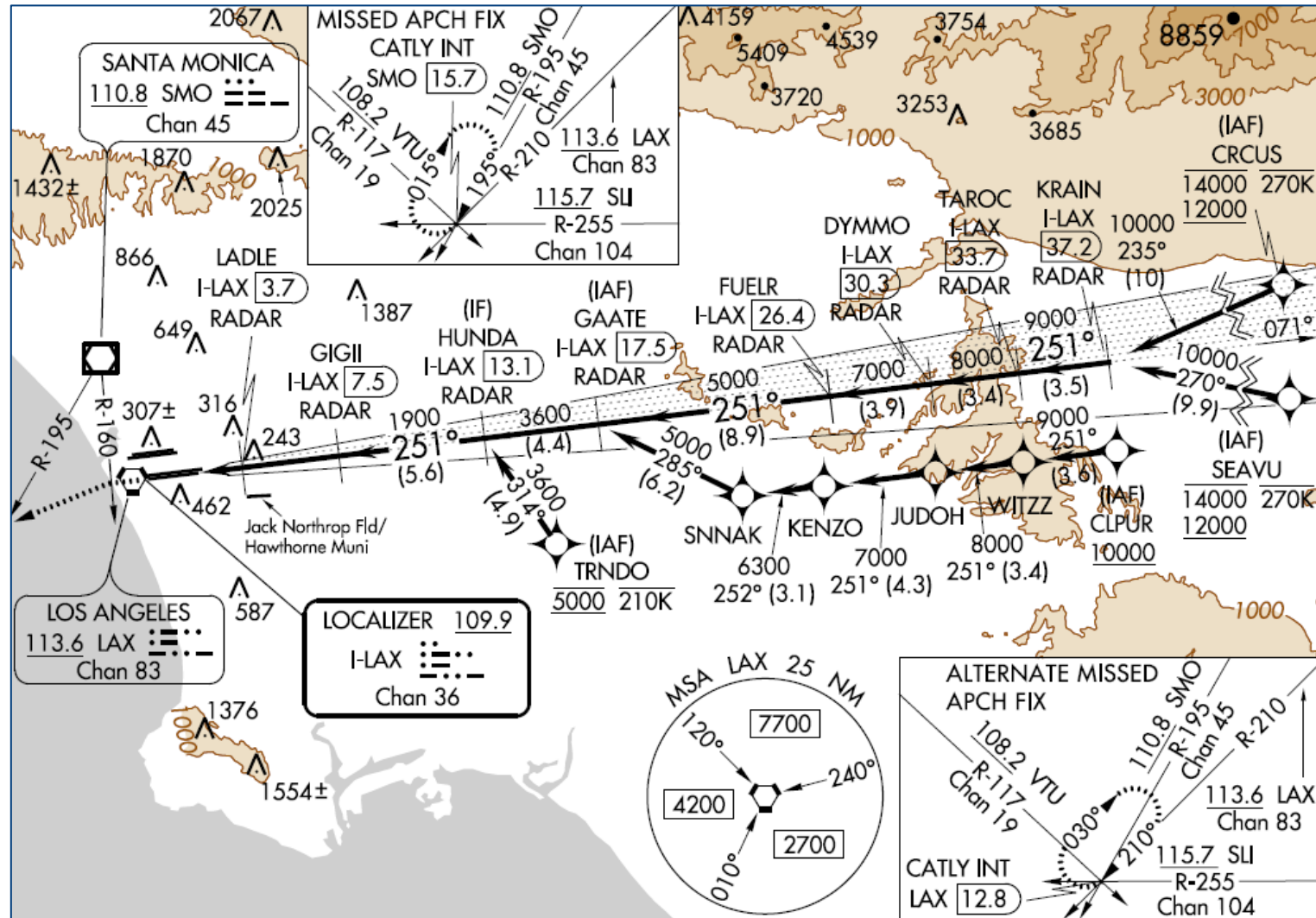
September 20, 2023

# Why were the changes implemented?

The FAA identified the implementation of Established on Required Navigation Performance (EoR) at KLAX as a possible initiative in support of the 2018 FAA Reauthorization Act. EoR is a system of authorized instrument approaches, Air Traffic Control (ATC) procedures, surveillance, and communication requirements that allow aircraft operations to be safely conducted with approved reduced separation criteria once aircraft are established on a Performance Based Navigation (PBN) segment of a published instrument flight procedure. In order to implement EoR at KLAX, instrument approach procedure amendments were necessary to meet safety criteria.

# ILS or LOC RWY 25L before June 15, 2023

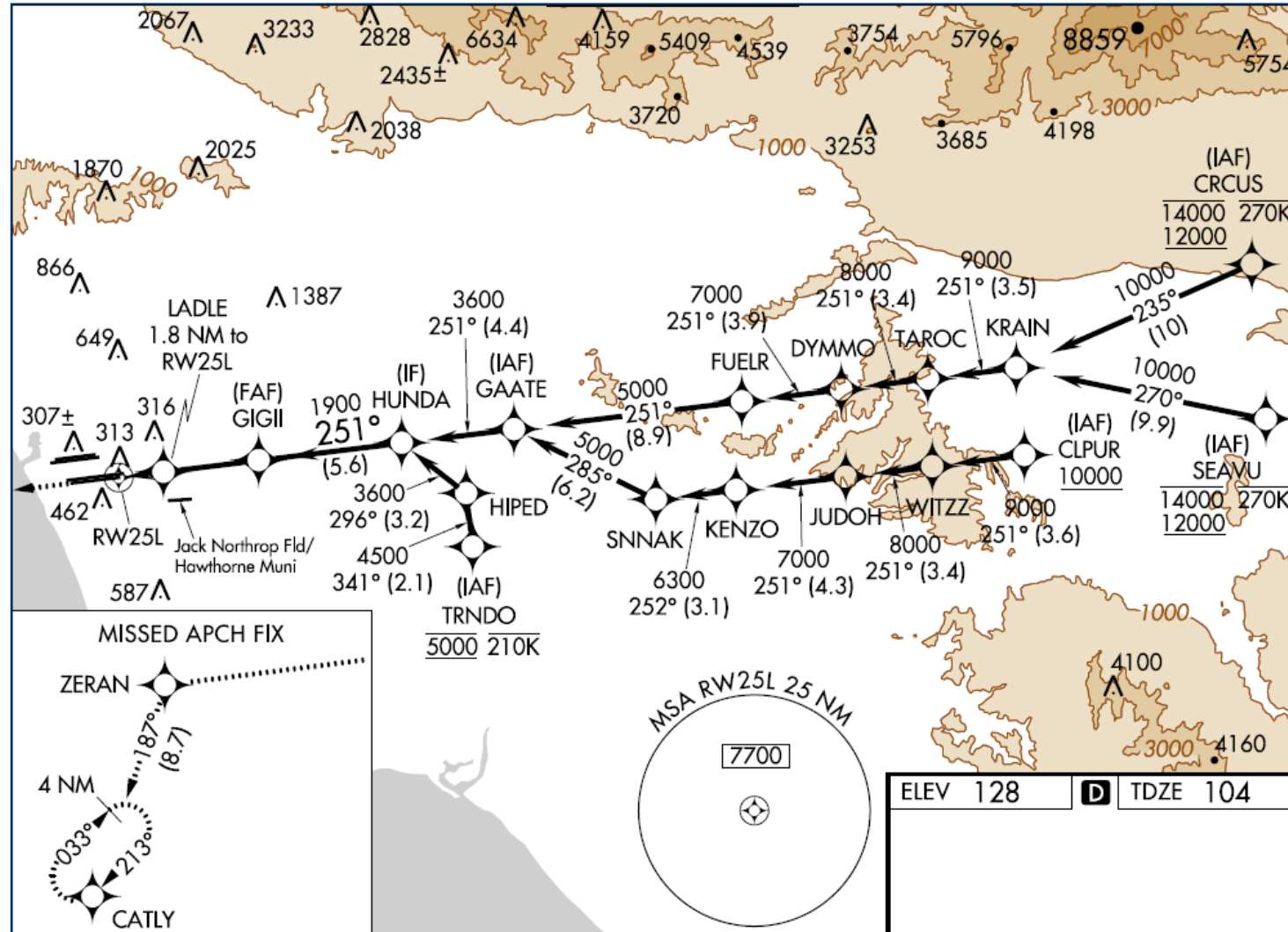
There are no provisions for reduced separation criteria for RNAV equipped aircraft.





# RNAV (GPS) Y RWY 25L before June 15, 2023

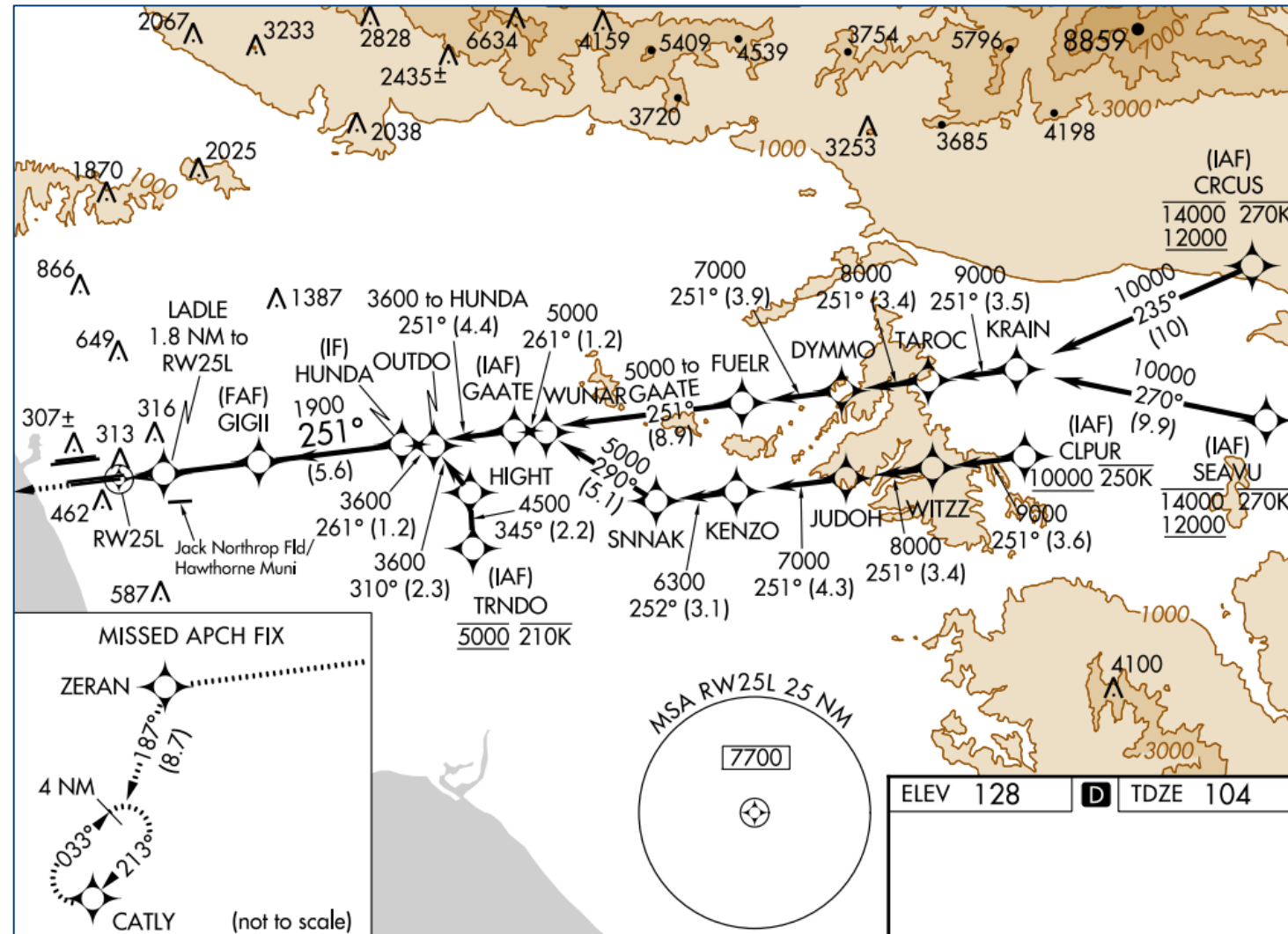
There are no provisions for reduced separation criteria for RNAV equipped aircraft.



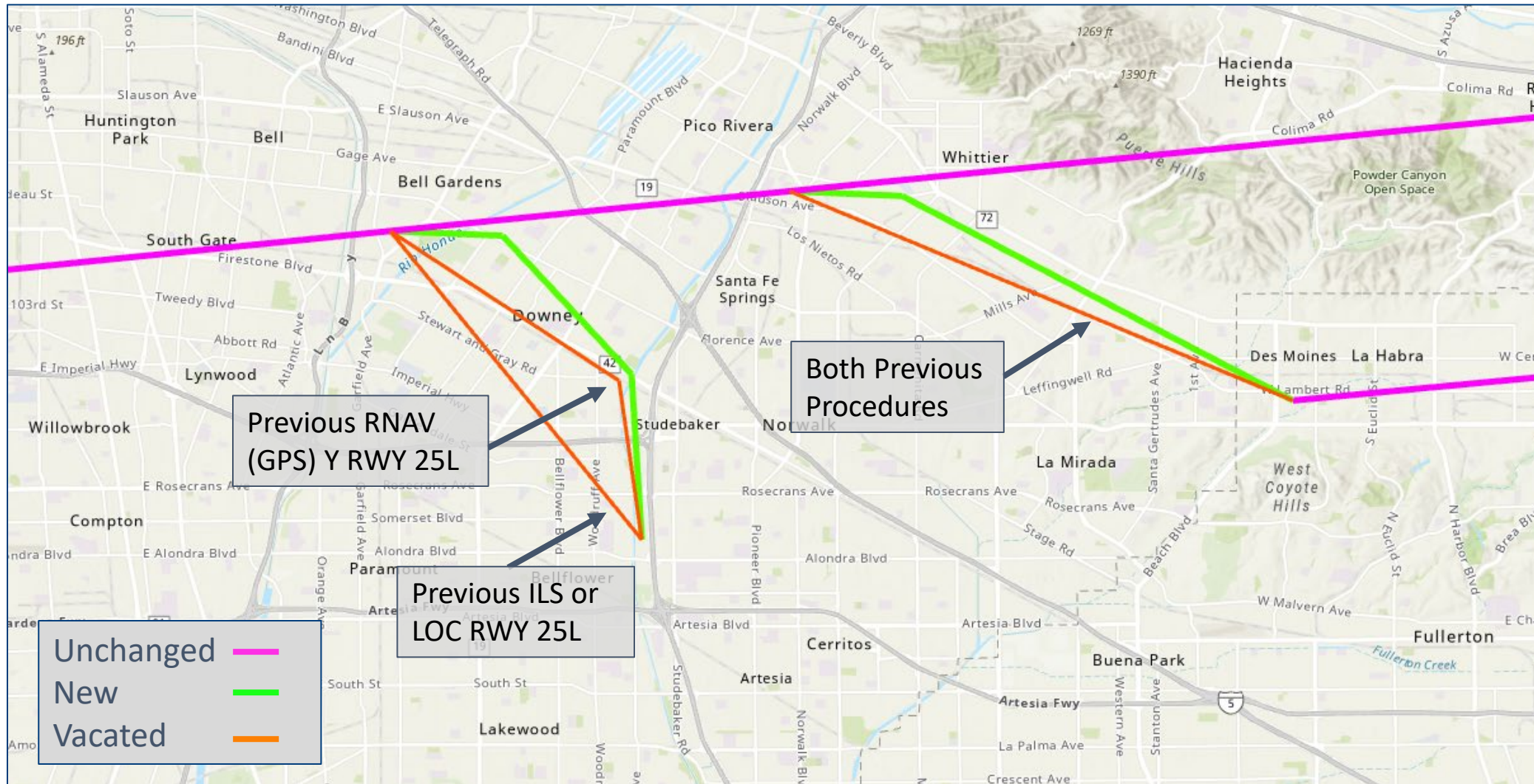


# RNAV (GPS) Y RWY 25L after June 15, 2023

Properly equipped aircraft are eligible for reduced separation criteria.



# ILS or LOC RWY 25L and RNAV (GPS) Y RWY 25L

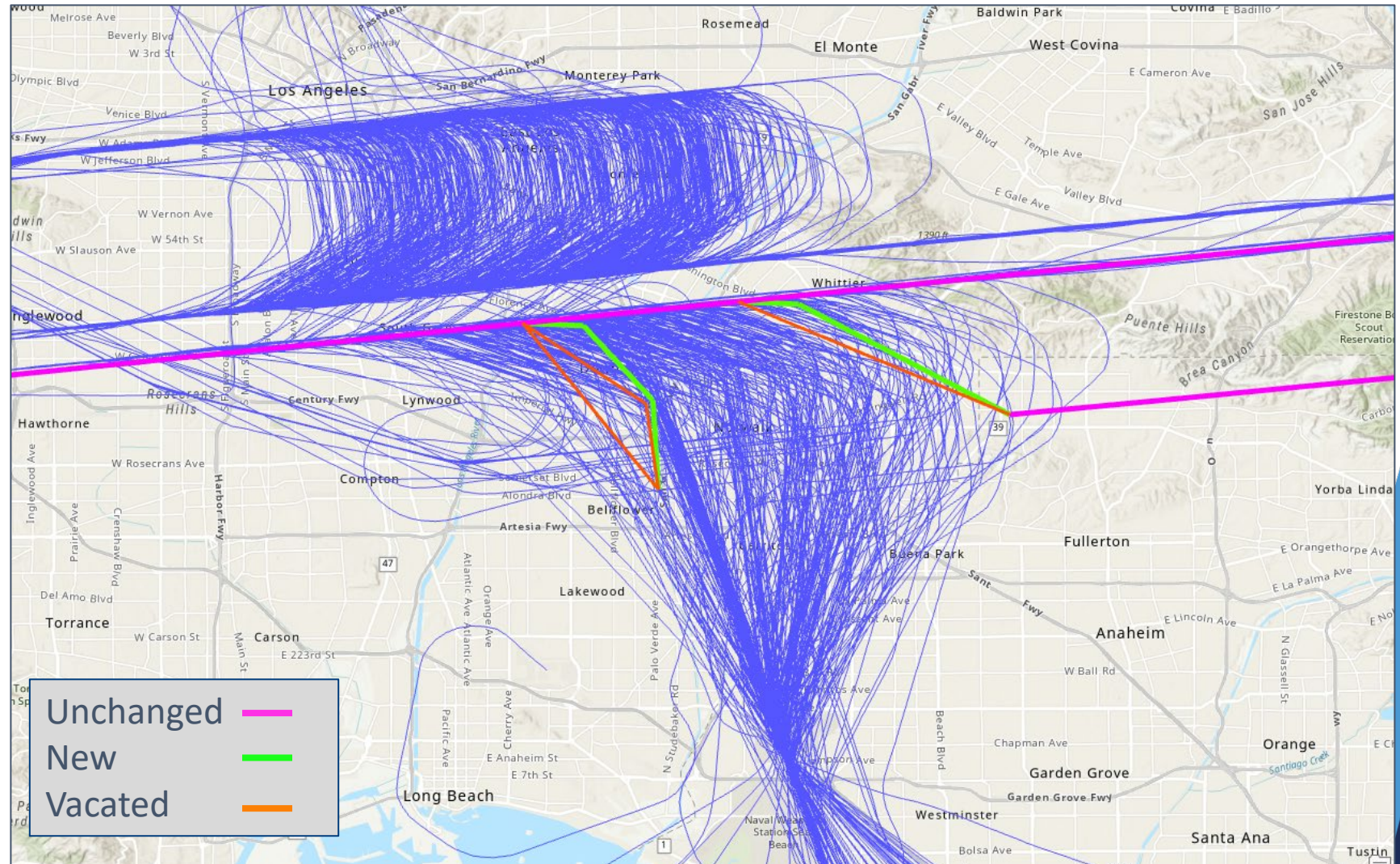




# LAX Arrival Traffic – Before Implementation

Both the amended ILS or LOC RWY 25L and RNAV (GPS) Y RWY 25L procedures have the same flight paths.

Flight tracks from June 7 – 9, 2023.

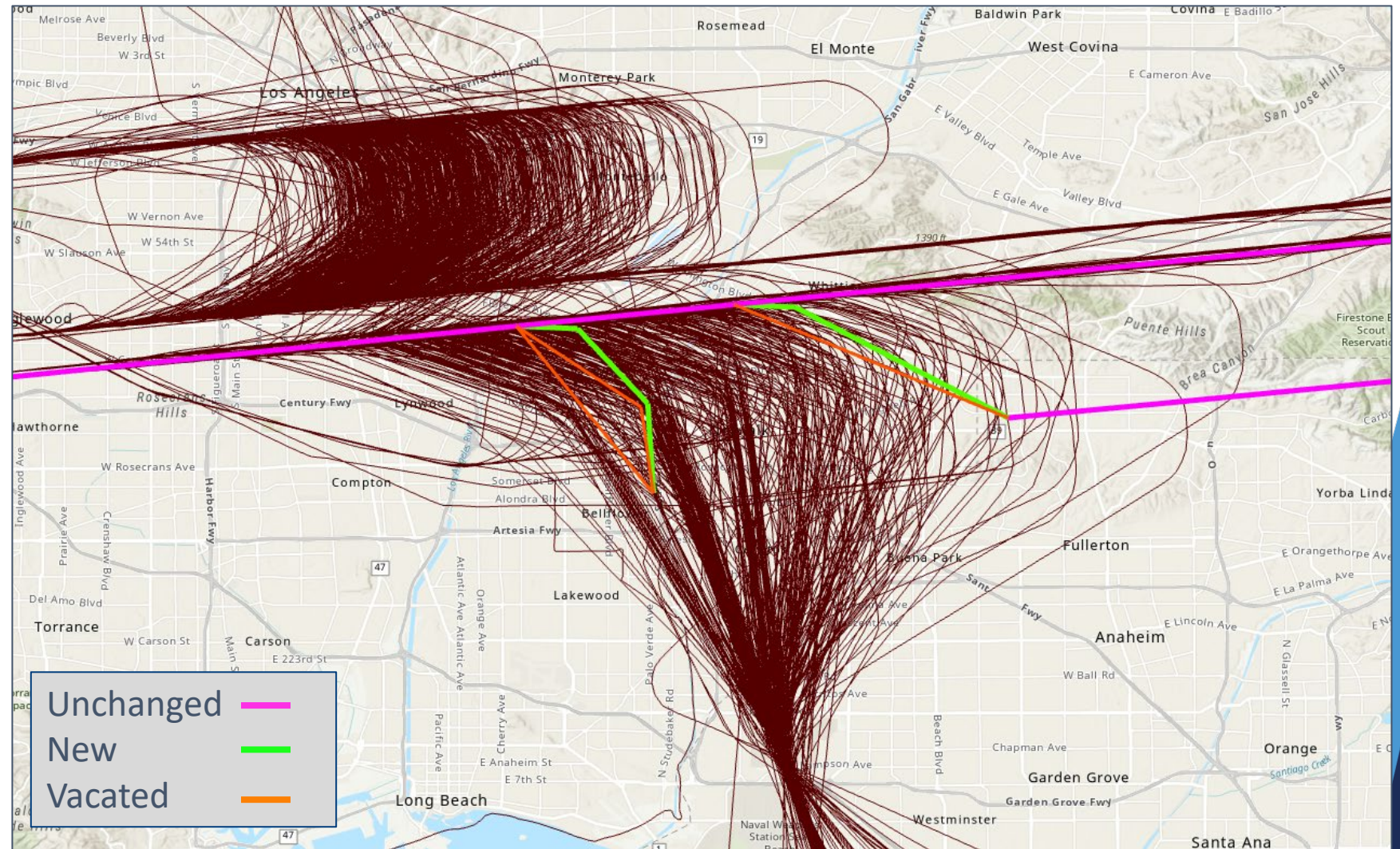




# LAX Arrival Traffic – After Implementation

Both the amended ILS or LOC RWY 25L and RNAV (GPS) Y RWY 25L procedures have the same flight paths.

Flight tracks from June 21 – 23, 2023.

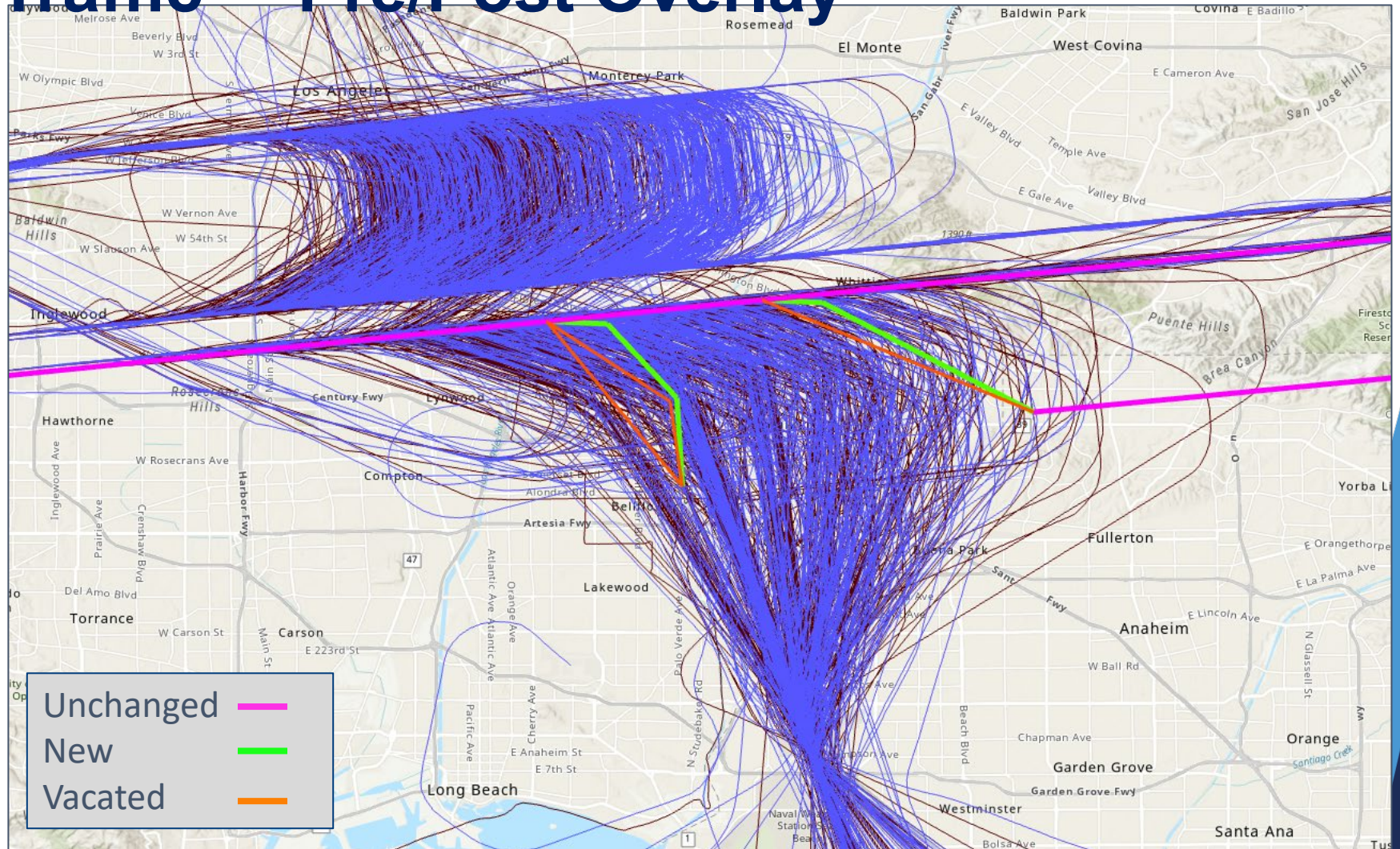




# LAX Arrival Traffic – Pre/Post Overlay

Both the amended ILS or LOC RWY 25L and RNAV (GPS) Y RWY 25L procedures have the same flight paths.

Blue: June 7 – 9, 2023  
Brown: June 21 – 23, 2023



# Conclusion

- Changes were part of the 2018 FAA Reauthorization Act.
- Allows for reduced separation when aircraft are established on a PBN segment of a published instrument flight procedure.
- Changes were made to procedures that are rarely flown today, most are being vectored by Air Traffic Controllers.