




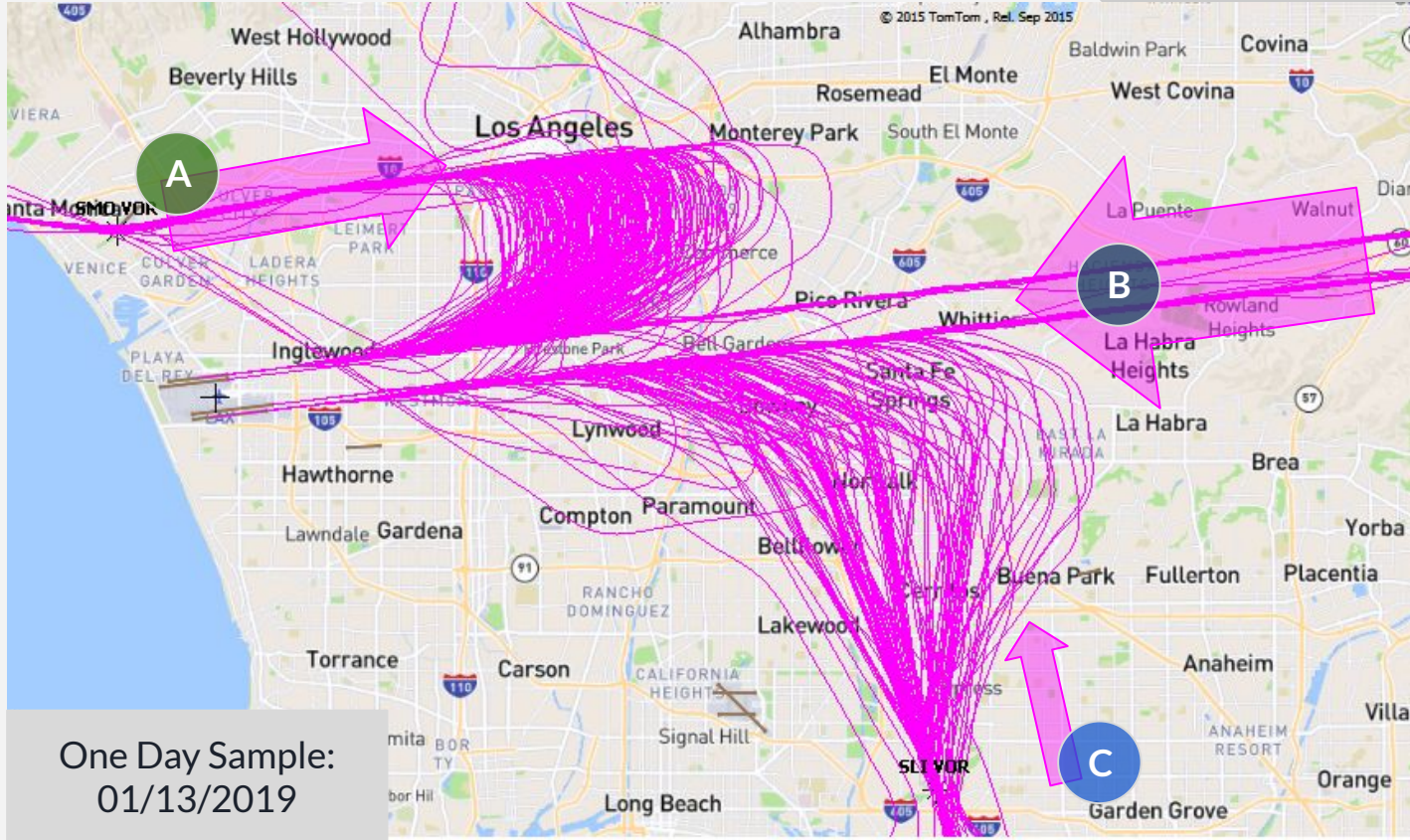
# LAX Metroplex / Wide Area Ad Hoc Committee

LAX Community Noise Roundtable  
Jul 2021

- 
1. North Downwind Arrival Flight Paths
  2. LAX and Other Airports
  3. City of Los Angeles vs. FAA
  4. Option B Proposal Development
  5. DAHJR Flight Data - 24 hours
  6. DAHJR - 0100 to 0500 hours
  7. GADDO Flight Data - 24 hours



# 1. North Downwind Arrival Flight Paths - Merges



One Day Sample:  
01/13/2019

Percentage breakout of flights landing including their origin paths from one day at LAX

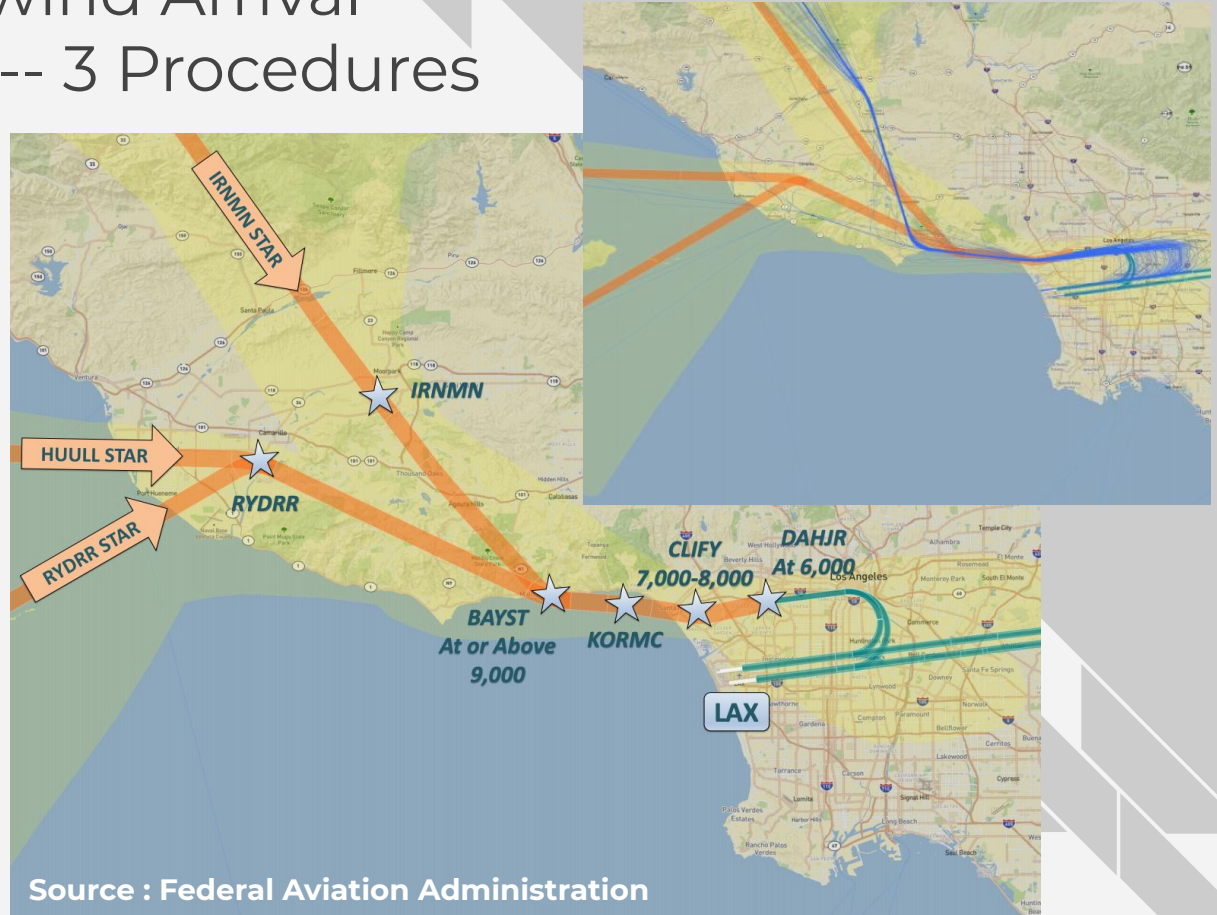
- A** North Arrivals  
36% of inbound air traffic
- B** East Arrivals  
52% of inbound air traffic
- C** South Arrivals  
12% of inbound air traffic



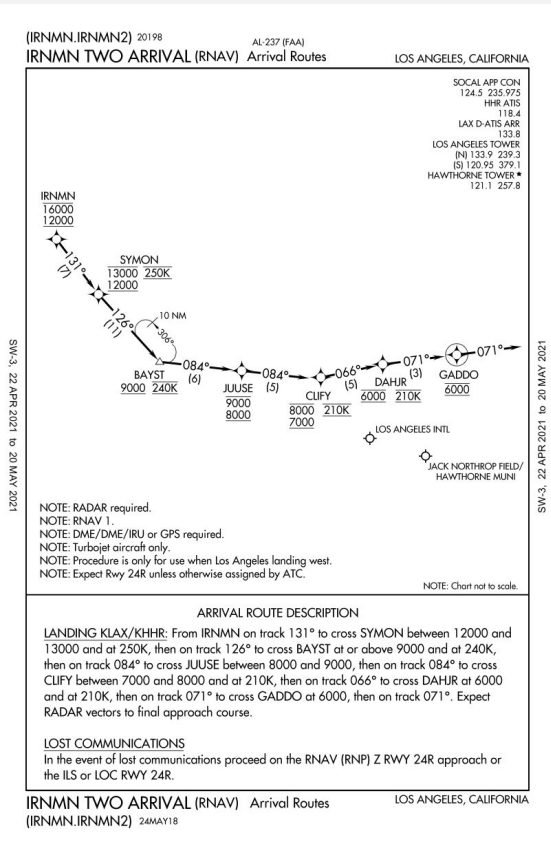
# 1. North Downwind Arrival Flight Paths -- 3 Procedures



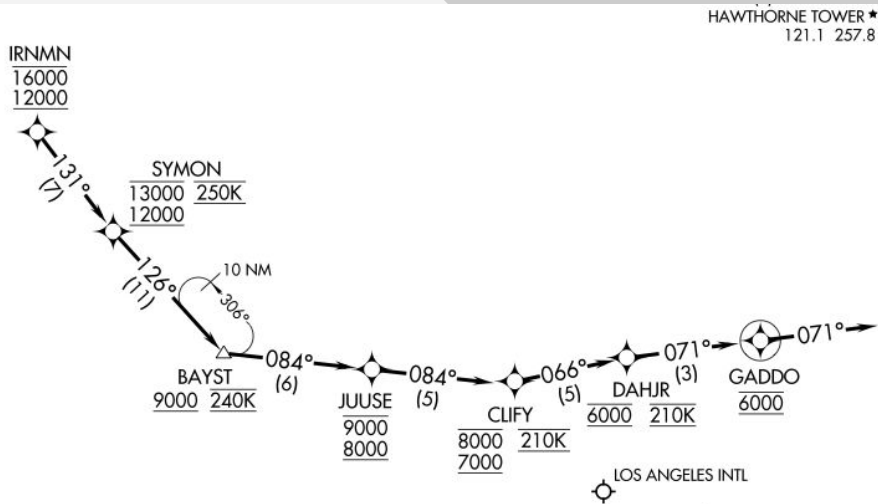
**RYDRR, HUULL, & IRNMN** are the 3 North Downwind Arrival Flight Paths into LAX



# 1. North Downwind Arrival Flight Paths - IRNMN



SW-3, 22 APR 2021 to 20 MAY 2021



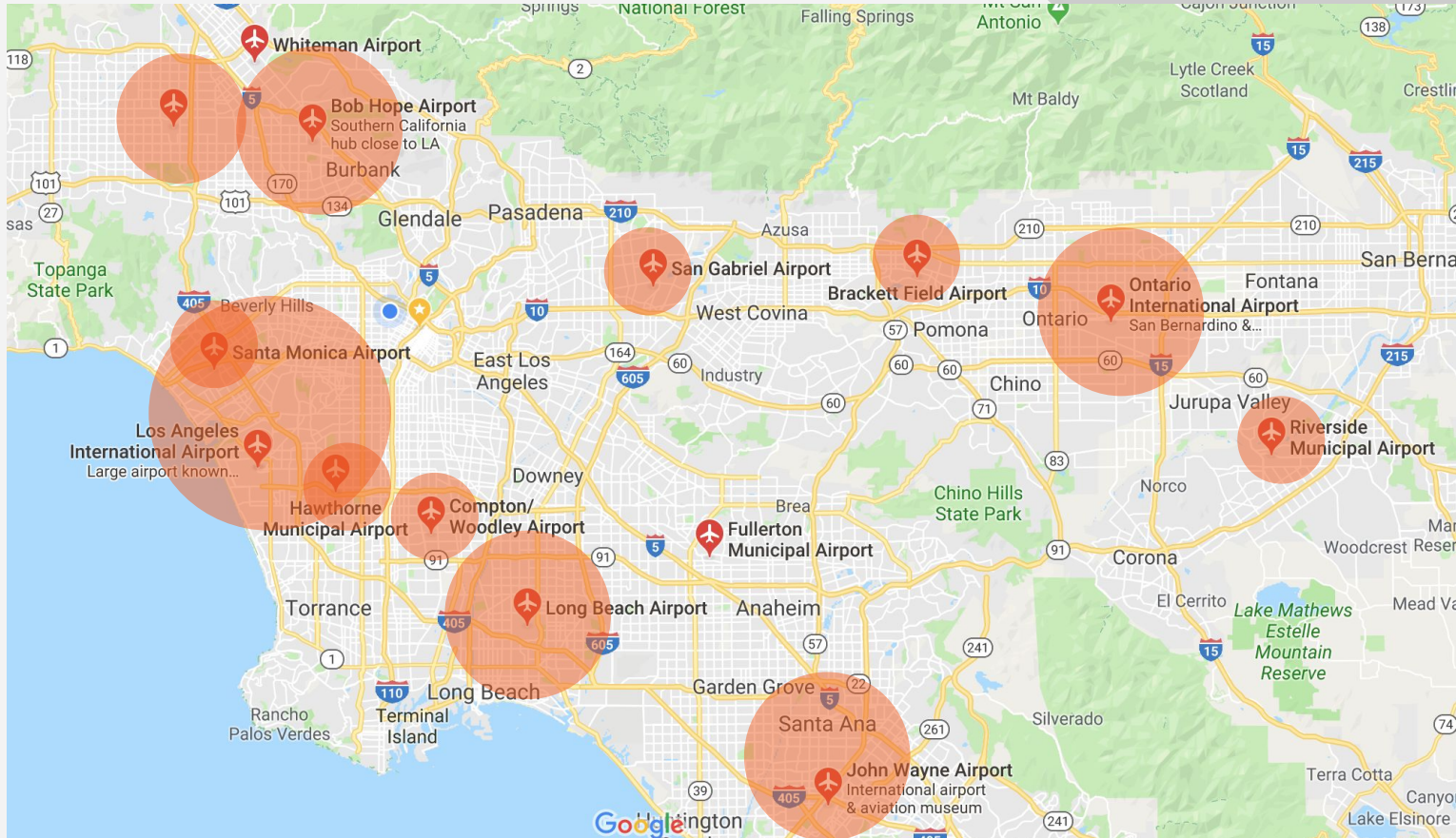
## ARRIVAL ROUTE DESCRIPTION

**LANDING KLAX/KHHR:** From IRNMN on track 131° to cross SYMON between 12000 and 13000 and at 250K, then on track 126° to cross BAYST at or above 9000 and at 240K, then on track 084° to cross JUUSE between 8000 and 9000, then on track 084° to cross CLIFY between 7000 and 8000 and at 210K, then on track 066° to cross DAHJR at 6000 and at 210K, then on track 071° to cross GADDO at 6000, then on track 071°. Expect RADAR vectors to final approach course.

## LOST COMMUNICATIONS

In the event of lost communications proceed on the RNAV (RNP) Z RWY 24R approach or the ILS or LOC RWY 24R.

## 2. LAX and Other Airports



### 3. City of Los Angeles vs FAA

- June 2019, the City Attorney petitioned the U.S. 9th Circuit Court of Appeals regarding flight paths (a.k.a. North Downwind Arrival) over Mid-City, West Adams and Central Los Angeles
- For the past two years FAA counsel advised FAA staff that they could no longer discuss any matters with the RT regarding North Downwind Arrival
- Last month federal judges for the 9th Circuit based in Pasadena heard oral arguments from the City of Los Angeles and the FAA
- Last week the City of Los Angeles won its case against the FAA
- The decision leaves the current North Downwind procedures in question in place. The FAA will need to conduct a new environmental assessment and community outreach for the procedures



### 3. City of Los Angeles vs FAA

The Ninth Circuit issued an opinion which invalidates the Federal Aviation Administration's (FAA) changes to flight procedures for aircraft arriving at Los Angeles International Airport. The court agreed with the City of Los Angeles that FAA violated the National Environmental Policy Act, National Historic Preservation Act, and Section 4(f) of the Department of Transportation Act by failing to conduct an environmental review and to consult with the City before making the flight procedure changes. The court found that FAA's after-the-fact analysis of environmental impacts did not comply with the law and that the agency improperly applied its procedures for so-called categorical exclusions which would have allowed only minimal environmental review. The court's ruling does allow the existing FAA flight procedure to remain in place while FAA conducts a proper environmental review, which under federal law will include public comment and consultation with the City. The Ninth Circuit did not rule on the City's secondary petition to invalidate an FAA notice regarding its website, holding that it was not a final agency action upon which it could rule.

### 3. City of Los Angeles vs FAA

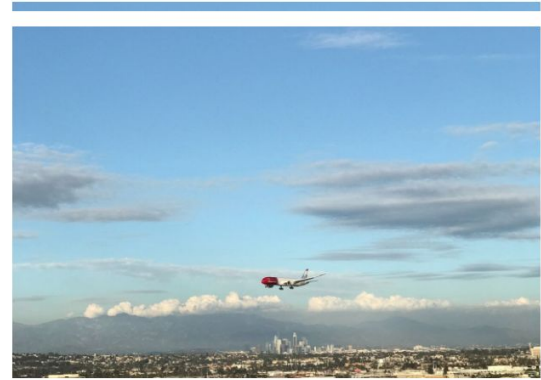
- FAA counsel will be working with regional leadership to advise them on when full engagement with the LAX Community Noise Roundtable and the Metroplex Ad Hoc Committee can continue
- The Roundtable has engaged the FAA on multiple issues regarding the North Downwind that need responses from the agency
- The first being potential shifts to the JUUSE waypoint off the Pacific Coast near the Palisades, the second being Option B, of which will discuss next

## 4. Option B Proposal - Development

- Given lack of progress over the past 4 years for getting any major noise relief for communities under the North Downwind, Quiet Skies LA developed two proposals to route air traffic off the North Downwind
- These came to be known as Option A and Option B
- When this Option B was first studied by LAWA and aviation consultants hired, it was less developed than Option A, which was determined as infeasible
- The Metroplex Ad Hoc Committee agreed to continue studying Option B within the Committee

## 4. Option B Proposal - Update

- A draft proposal of a refined Option B has been finalized and distributed to you all as part of this meeting
- The refined Option B proposal recommends diverting 31% of current North Downwind flights on to an existing procedure farther to the east of the existing IRNMN flight path



### North Downwind Option B Proposal

07.13.2021

**Metroplex Ad Hoc Committee**

LAX Community Noise Roundtable

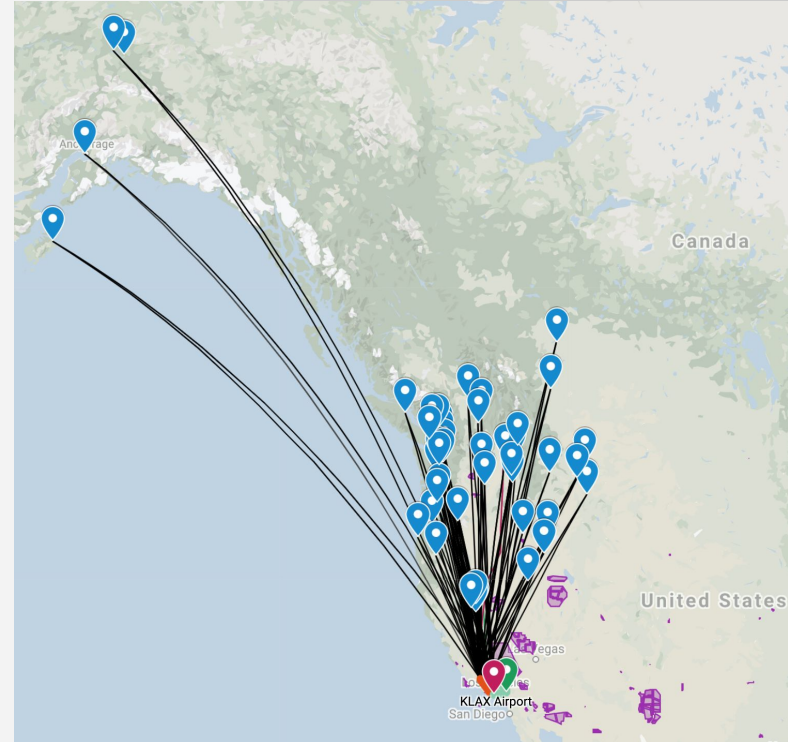
1 World Way

Los Angeles, CA 90045



## 4. Option B Proposal - Excluded Points of Origin

- 31% of flights proposed for rerouting were analyzed based on Point of Origin
- All cross-Pacific flights from Asia, Australia, Oceania & Hawaii were excluded from consideration due to fuel load requirements and significant additions to flight time
- All California-based flights w/the exception of Tahoe/Reno were also excluded for the same reason

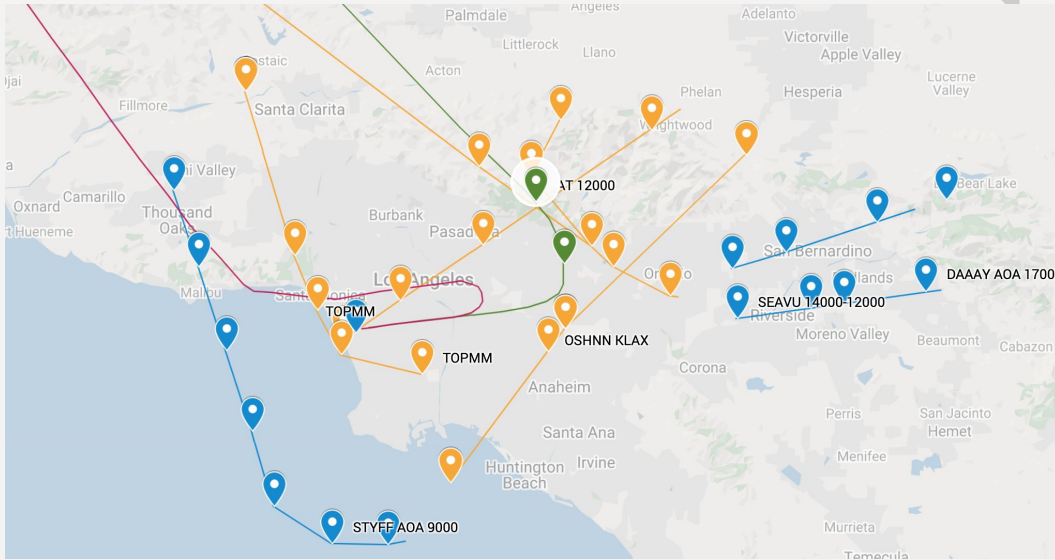


## 4. Option B Proposal

- 31% of flights Point of Origins are noted to the left
- Airports in this list are located in Oregon, Washington State, Central and Northern Nevada, Idaho, Montana, British Columbia, Alberta, & Alaska
- Distance estimates done estimate that Option B adds no more than approx. 5% of additional flight time. Some flight distances are reduced

Code	Point of Origin	% of Option B	% of N. DwnWnd		Code	Point of Origin	% of Option B	% of N. DwnWnd
ADQ	Kodiak, AK	0.01%	0.00%		PAE	Seattle, WA	3.05%	0.95%
ANC	Anchorage, AK	1.38%	0.43%		PDX	Portland, OR	18.02%	5.62%
BFI	Seattle, WA	0.42%	0.13%		PSC	Pasco, OR	1.00%	0.31%
BLI	Bellingham, WA	0.35%	0.11%		PUW	Moscow, ID	0.01%	0.00%
BOI	Boise, ID	4.59%	1.43%		PWT	Bremerton, WA	0.01%	0.00%
BVS	Burlington, WA	0.01%	0.00%		RDM	Redmond, OR	2.53%	0.79%
BZN	Bozeman, MT	0.15%	0.05%		RNO	Reno, NV	10.31%	3.21%
COE	Coeur d'Alene, ID	0.04%	0.01%		SEA	Seattle, WA	30.47%	9.50%
CXP	Carson City, NV	0.01%	0.00%		SUN	Sun Valley, ID	0.66%	0.21%
EIL	Fairbanks, AK	0.01%	0.00%		SZT	Sandpoint, ID	0.01%	0.00%
EKO	Elko, NV	0.01%	0.00%		TIW	Pierce County, WA	0.01%	0.00%
EUG	Eugene, OR	3.77%	1.17%		TWF	Twin Falls, ID	0.07%	0.02%
FAI	Fairbanks, AK	0.01%	0.00%		TRK	Tahoe, CA	0.12%	0.04%
GEG	Spokane, WA	1.35%	0.42%		UAO	Aurora, OR	0.01%	0.00%
GTF	Great Falls, MT	0.01%	0.00%		YBL	Campbell River, BC	0.01%	0.00%
LWS	Lewiston, ID	0.01%	0.00%		YEG	Edmonton, AB	0.51%	0.16%
HLN	Helena, MT	0.01%	0.00%		YKA	Kamloops, BC	0.01%	0.00%
MEV	Genoa, NV	0.05%	0.02%		YLW	Kelowna, BC	0.03%	0.01%
MFR	Medford, OR	3.83%	1.19%		YPK	Pitt Meadows, BC	0.01%	0.00%
MSO	Missoula, MT	0.41%	0.13%		YVR	Vancouver, BC	13.22%	4.12%
MWH	Moses Lake, WA	0.01%	0.00%		YYC	Calgary, AB	3.49%	1.09%
OLM	Olympia, WA	0.01%	0.00%		YYF	Penticton, BC	0.01%	0.00%
OTH	North Bend, OR	0.02%	0.01%		YYJ	Victoria, BC	0.04%	0.01%

## 4. Option B, Proposed Route Example

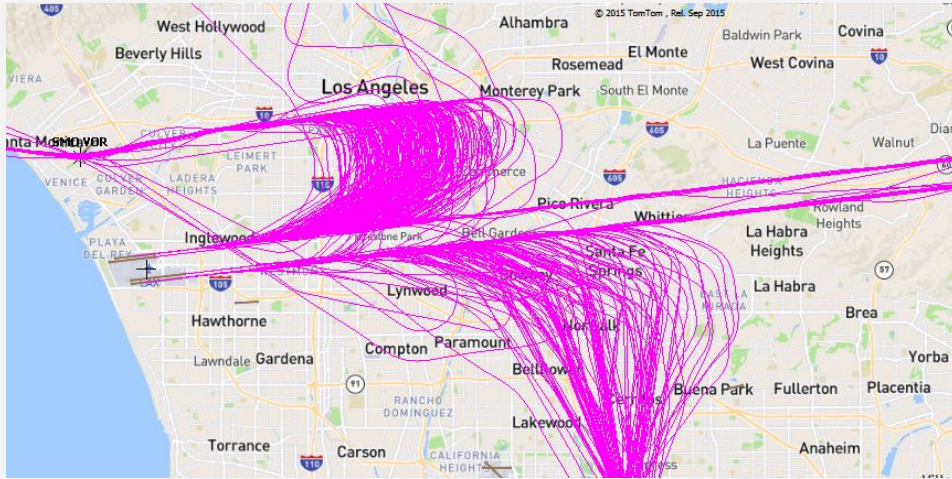


Existing IRNMN

Option B

- Proposal is to use existing ANJLL flight procedure used for arrivals into LAX
- Conflicts with existing flight paths for ONT or other facilities could be minimized by setting the right altitudes
- The shifting of flights will mean some shifting of noise as a result. However, Option B actively considers those challenges and attempts to mitigate them by being thoughtful about the proposed heights flown for the ANJLL procedure, and the portion of flights that would be taken off the North Downwind

## 4. Option B, Proposed Route Example



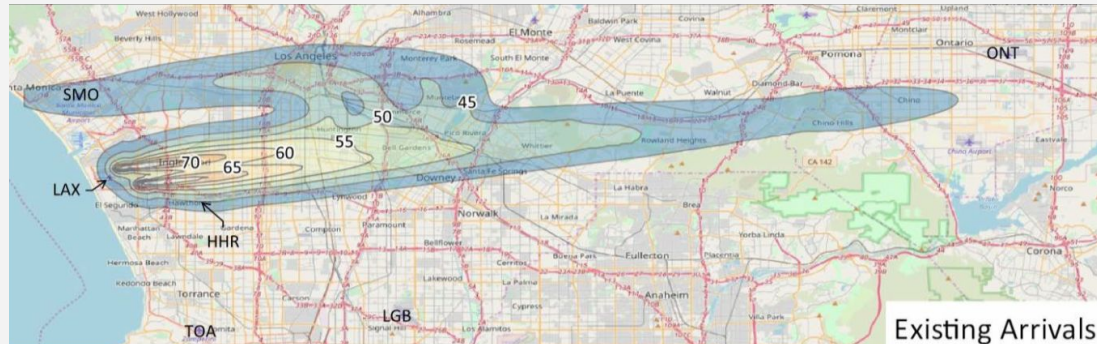
- Moving 31% traffic could reduce noise for communities east downtown Los Angeles in this turn radius. This is visually illustrated in Figure 4 for the large area of pink lines located just below the words "Los Angeles" on the map

- Option B traffic still needs to be merged into the majority of LAX arrivals traffic coming from the east. The proposal calls for this merge to occur between 12000 and 14000 feet and at a less severe angle than the North Downwind, thus reducing wind shear and fuselage noise on the aircraft. We see this as a strong benefit to Option B and would welcome FAA analysis of Option B final routing into LAX using OPD (Optimized Descent Profiles) to reduce aircraft noise



## 4. Option B Proposal - Next Steps

- The Metroplex Ad Hoc Committee has sent this Option B proposal to the Roundtable with no member opposition
- If the Roundtable agrees to send this proposal to the FAA, a cover letter will be sent with the report
- We will then await response and engagement from the FAA. This is the next step in analyzing the proposal, determining feasibility, and any potential next steps



# 5. 6000 Foot Alt +/- 300 at DAHJR - 24 hours

**ANOMS Gate Penetration - DAHJR**  
January 1-31, 2019

Altitude MSL (ft)	Count of Ops*	% of Ops	% of Ops Between Altitudes	% of Ops At or Above Altitudes
>6300	552	7.6%		
6000-6299	1636	22.5%		
5700-5999	1958	26.9%	56.9%	
5500-5699	979	13.4%	43.1%	
5000-5499	1423	19.5%		89.9%
4500-4999	522	7.2%		99.2%
4000-4499	156	2.1%		
3500-3999	50	0.7%		100.0%
3000-3499	10	0.1%		
2500-2999	1	0.0%		
<2500	0	0.0%		100.0%
<b>Grand Total</b>	<b>7287</b>	<b>100%</b>		

Prepared by: LAWA Noise Management  
\*Data source: LAX ANOMS

**ANOMS Gate Penetration - DAHJR**  
February 1-28, 2019

Altitude MSL (ft)	Count of Ops*	% of Ops	% of Ops Between Altitudes	% of Ops At or Above Altitudes
>6300	765	9.9%		
6000-6299	1996	25.9%		
5700-5999	2214	28.7%	64.6%	
5500-5699	968	12.6%	35.4%	
5000-5499	1251	16.2%		93.4%
4500-4999	368	4.8%		99.4%
4000-4499	98	1.3%		
3500-3999	34	0.4%		99.9%
3000-3499	8	0.1%		
2500-2999	4	0.1%		
<2500	0	0.0%		100.0%
<b>Grand Total</b>	<b>7706</b>	<b>100%</b>		

Prepared by: LAWA Noise Management  
\*Data source: LAX ANOMS

**ANOMS Gate Penetration - DAHJR**  
March 1-31, 2019

Altitude MSL (ft)	Count of Ops*	% of Ops	% of Ops Between Altitudes	% of Ops At or Above Altitudes
>6300	713	8.0%		
6000-6299	2220	24.9%		
5700-5999	2595	29.1%	62.0%	
5500-5699	1113	12.5%	38.0%	
5000-5499	1574	17.7%		92.1%
4500-4999	524	5.9%		99.5%
4000-4499	136	1.5%		
3500-3999	33	0.4%		100.0%
3000-3499	7	0.1%		
2500-2999	1	0.0%		
<2500	0	0.0%		100.0%
<b>Grand Total</b>	<b>8916</b>	<b>100%</b>		

Prepared by: LAWA Noise Management  
\*Data source: LAX ANOMS

**ANOMS Gate Penetration - DAHJR**  
April 1-30, 2019

Altitude MSL (ft)	Count of Ops*	% of Ops	% of Ops Between Altitudes	% of Ops At or Above Altitudes
>6300	679	7.5%		
6000-6299	2368	26.1%		
5700-5999	2677	29.5%	63.1%	
5500-5699	1155	12.7%	36.9%	
5000-5499	1566	17.3%		93.2%
4500-4999	463	5.1%		99.6%
4000-4499	120	1.3%		
3500-3999	27	0.3%		100.0%
3000-3499	6	0.1%		
2500-2999	3	0.0%		
<2500	1	0.0%		100.0%
<b>Grand Total</b>	<b>9065</b>	<b>100%</b>		

Prepared by: LAWA Noise Management  
\*Data source: LAX ANOMS

# 5. 6000 Foot Alt +/- 300 at DAHJR - 24 hours

## ANOMS Gate Penetration - DAHJR

May 1-31, 2019

Altitude MSL (ft)	Count of Ops*	% of Ops	% of Ops Between Altitudes	% of Ops At or Above Altitudes
>6300	660	7.1%		
6000-6299	2381	25.7%		
5700-5999	2669	28.9%	61.7%	
5500-5699	1209	13.1%	38.3%	
5000-5499	1630	17.6%		92.4%
4500-4999	517	5.6%		
4000-4499	141	1.5%		99.5%
3500-3999	29	0.3%		99.9%
3000-3499	10	0.1%		100.0%
2500-2999	4	0.0%		
<2500	1	0.0%		
<b>Grand Total</b>	<b>9251</b>	<b>100%</b>		

Prepared by: LAWA Noise Management

\*Data source: LAX ANOMS

## ANOMS Gate Penetration - DAHJR

July 1-31, 2019

Altitude MSL (ft)	Count of Ops*	% of Ops	% of Ops Between Altitudes	% of Ops At or Above Altitudes
>6300	784	7.9%		
6000-6299	2699	27.3%		
5700-5999	3129	31.6%	66.8%	
5500-5699	1313	13.3%	33.2%	
5000-5499	1508	15.2%		95.4%
4500-4999	359	3.6%		99.7%
4000-4499	75	0.8%		100.0%
3500-3999	21	0.2%		
3000-3499	4	0.0%		
2500-2999	0	0.0%		
<2500	0	0.0%		
<b>Grand Total</b>	<b>9892</b>	<b>100%</b>		

Prepared by: LAWA Noise Management

\*Data source: LAX ANOMS

## ANOMS Gate Penetration - DAHJR

June 1-30, 2019

Altitude MSL (ft)	Count of Ops*	% of Ops	% of Ops Between Altitudes	% of Ops At or Above Altitudes
>6300	642	6.8%		
6000-6299	2759	29.2%		
5700-5999	2985	31.6%	67.6%	
5500-5699	1138	12.1%	32.4%	
5000-5499	1398	14.8%		94.5%
4500-4999	420	4.4%		99.7%
4000-4499	74	0.8%		100.0%
3500-3999	14	0.1%		
3000-3499	9	0.1%		
2500-2999	1	0.0%		
<2500	0	0.0%		
<b>Grand Total</b>	<b>9440</b>	<b>100%</b>		

Prepared by: LAWA Noise Management

\*Data source: LAX ANOMS

## ANOMS Gate Penetration - DAHJR

August 1-31, 2019

Altitude MSL (ft)	Count of Ops*	% of Ops	% of Ops Between Altitudes	% of Ops At or Above Altitudes
>6300	698	7.1%		
6000-6299	2627	26.9%		
5700-5999	3108	31.8%	65.8%	
5500-5699	1275	13.0%	34.2%	
5000-5499	1551	15.9%		94.7%
4500-4999	417	4.3%		99.8%
4000-4499	88	0.9%		100.0%
3500-3999	14	0.1%		
3000-3499	1	0.0%		
2500-2999	0	0.0%		
<2500	1	0.0%		
<b>Grand Total</b>	<b>9780</b>	<b>100%</b>		

Prepared by: LAWA Noise Management

\*Data source: LAX ANOMS

# 5. 6000 Foot Alt +/- 300 at DAHJR - 24 hours

ANOMS Gate Penetration - DAHJR  
September 1-30, 2019

Altitude MSL (ft)	Count of Ops*	% of Ops	% of Ops Between Altitudes	% of Ops At or Above Altitudes
>6300	675	7.7%		
6000-6299	2178	25.0%		
5700-5999	2570	29.5%	62.2%	
5500-5699	1129	12.9%	37.8%	
5000-5499	1574	18.0%		93.1%
4500-4999	465	5.3%		
4000-4499	95	1.1%		99.6%
3500-3999	29	0.3%		
3000-3499	8	0.1%		100.0%
2500-2999	1	0.0%		
<2500	0	0.0%		100.0%
<b>Grand Total</b>	<b>8724</b>	<b>100%</b>		

Prepared by: LAWA Noise Management  
\*Data source: LAX ANOMS

ANOMS Gate Penetration - DAHJR  
November 1-30, 2019

Altitude MSL (ft)	Count of Ops*	% of Ops	% of Ops Between Altitudes	% of Ops At or Above Altitudes
>6300	493	6.1%		
6000-6299	1780	22.0%		
5700-5999	2371	29.3%	57.3%	
5500-5699	1102	13.6%	42.7%	
5000-5499	1662	20.5%		91.5%
4500-4999	512	6.3%		
4000-4499	144	1.8%		99.6%
3500-3999	26	0.3%		
3000-3499	8	0.1%		100.0%
2500-2999	1	0.0%		
<2500	0	0.0%		100.0%
<b>Grand Total</b>	<b>8099</b>	<b>100%</b>		

Prepared by: LAWA Noise Management  
\*Data source: LAX ANOMS

ANOMS Gate Penetration - DAHJR  
October 1-31, 2019

Altitude MSL (ft)	Count of Ops*	% of Ops	% of Ops Between Altitudes	% of Ops At or Above Altitudes
>6300	633	7.0%		
6000-6299	2070	23.0%		
5700-5999	2728	30.3%	60.3%	
5500-5699	1146	12.7%	39.7%	
5000-5499	1729	19.2%		92.3%
4500-4999	533	5.9%		
4000-4499	125	1.4%		99.6%
3500-3999	29	0.3%		
3000-3499	6	0.1%		100.0%
2500-2999	1	0.0%		
<2500	0	0.0%		100.0%
<b>Grand Total</b>	<b>9000</b>	<b>100%</b>		

Prepared by: LAWA Noise Management  
\*Data source: LAX ANOMS

ANOMS Gate Penetration - DAHJR  
December 1-31, 2019

Altitude MSL (ft)	Count of Ops*	% of Ops	% of Ops Between Altitudes	% of Ops At or Above Altitudes
>6300	584	7.6%		
6000-6299	1752	22.9%		
5700-5999	2288	29.9%	60.5%	
5500-5699	995	13.0%	39.5%	
5000-5499	1325	17.3%		90.9%
4500-4999	509	6.7%		
4000-4499	131	1.7%		99.3%
3500-3999	39	0.5%		
3000-3499	15	0.2%		100.0%
2500-2999	2	0.0%		
<2500	1	0.0%		100.0%
<b>Grand Total</b>	<b>7641</b>	<b>100%</b>		

Prepared by: LAWA Noise Management  
\*Data source: LAX ANOMS

# 5. 6000 Foot Alt +/- 300 at DAHJR - 24 hours

## ANOMS Gate Penetration - DAHJR

January 1-31, 2020

Altitude MSL (ft)	Count of Ops*	% of Ops	% of Ops Between Altitudes	% of Ops At or Above Altitudes
>6300	664	7.6%		
6000-6299	2141	24.5%		
5700-5999	2550	29.1%	61.2%	
5500-5699	1117	12.8%	38.8%	
5000-5499	1574	18.0%		92.0%
4500-4999	504	5.8%		
4000-4499	148	1.7%		99.4%
3500-3999	40	0.5%		
3000-3499	8	0.1%		100.0%
2500-2999	2	0.0%		
<2500	0	0.0%		100.0%
<b>Grand Total</b>	<b>8748</b>	<b>100%</b>		

Prepared by: LAWA Noise Management

\*Data source: LAX ANOMS

## ANOMS Gate Penetration - DAHJR

February 1-29, 2020

Altitude MSL (ft)	Count of Ops*	% of Ops	% of Ops Between Altitudes	% of Ops At or Above Altitudes
>6300	447	5.9%		
6000-6299	1535	20.2%		
5700-5999	2149	28.3%	54.4%	
5500-5699	1009	13.3%	45.6%	
5000-5499	1632	21.5%		89.2%
4500-4999	580	7.6%		
4000-4499	173	2.3%		99.1%
3500-3999	54	0.7%		
3000-3499	11	0.1%		100.0%
2500-2999	3	0.0%		
<2500	0	0.0%		100.0%
<b>Grand Total</b>	<b>7593</b>	<b>100%</b>		

Prepared by: LAWA Noise Management

\*Data source: LAX ANOMS

## ANOMS Gate Penetration - DAHJR

March 1-31, 2020

Altitude MSL (ft)	Count of Ops*	% of Ops	% of Ops Between Altitudes	% of Ops At or Above Altitudes
>6300	394	6.0%		
6000-6299	1313	19.9%		
5700-5999	1814	27.6%	53.5%	
5500-5699	848	12.9%	46.5%	
5000-5499	1363	20.7%		87.1%
4500-4999	549	8.3%		
4000-4499	213	3.2%		98.6%
3500-3999	58	0.9%		
3000-3499	22	0.3%		99.9%
2500-2999	6	0.1%		
<2500	3	0.0%		100.0%
<b>Grand Total</b>	<b>6583</b>	<b>100%</b>		

Prepared by: LAWA Noise Management

\*Data source: LAX ANOMS

## ANOMS Gate Penetration - DAHJR

April 1-30, 2020

Altitude MSL (ft)	Count of Ops*	% of Ops	% of Ops Between Altitudes	% of Ops At or Above Altitudes
>6300	140	6.2%		
6000-6299	545	24.2%		
5700-5999	527	23.4%	53.8%	
5500-5699	289	12.8%	46.2%	
5000-5499	454	20.2%		86.8%
4500-4999	169	7.5%		
4000-4499	79	3.5%		97.8%
3500-3999	34	1.5%		
3000-3499	11	0.5%		99.8%
2500-2999	4	0.2%		
<2500	0	0.0%		100.0%
<b>Grand Total</b>	<b>2252</b>	<b>100%</b>		

Prepared by: LAWA Noise Management

\*Data source: LAX ANOMS

# 5. 6000 Foot Alt +/- 300 at DAHJR - 24 hours

**ANOMS Gate Penetration - DAHJR**  
May 1-31, 2020

Altitude MSL (ft)	Count of Ops*	% of Ops	% of Ops Between Altitudes	% of Ops At or Above Altitudes
>6300	212	7.7%		
6000-6299	740	26.9%		
5700-5999	657	23.9%	58.5%	
5500-5699	335	12.2%	41.5%	
5000-5499	527	19.2%		89.8%
4500-4999	200	7.3%		
4000-4499	59	2.1%		99.2%
3500-3999	12	0.4%		
3000-3499	8	0.3%		100.0%
2500-2999	1	0.0%		
<2500	0	0.0%		100.0%
<b>Grand Total</b>	<b>2751</b>	<b>100%</b>		

Prepared by: LAWA Noise Management  
\*Data source: LAX ANOMS

**ANOMS Gate Penetration - DAHJR**  
June 1-30, 2020

Altitude MSL (ft)	Count of Ops*	% of Ops	% of Ops Between Altitudes	% of Ops At or Above Altitudes
>6300	244	7.7%		
6000-6299	775	24.5%		
5700-5999	845	26.7%	58.8%	
5500-5699	400	12.6%	41.2%	
5000-5499	595	18.8%		90.2%
4500-4999	214	6.8%		
4000-4499	76	2.4%		99.4%
3500-3999	17	0.5%		
3000-3499	1	0.0%		100.0%
2500-2999	1	0.0%		
<2500	0	0.0%		100.0%
<b>Grand Total</b>	<b>3168</b>	<b>100%</b>		

Prepared by: LAWA Noise Management  
\*Data source: LAX ANOMS

**ANOMS Gate Penetration - DAHJR**  
July 1-31, 2020

Altitude MSL (ft)	Count of Ops*	% of Ops	% of Ops Between Altitudes	% of Ops At or Above Altitudes
>6300	306	7.7%		
6000-6299	1096	27.5%		
5700-5999	1132	28.4%	63.5%	
5500-5699	502	12.6%	36.5%	
5000-5499	680	17.0%		93.2%
4500-4999	205	5.1%		
4000-4499	51	1.3%		99.6%
3500-3999	14	0.4%		
3000-3499	3	0.1%		100.0%
2500-2999	0	0.0%		
<2500	0	0.0%		100.0%
<b>Grand Total</b>	<b>3989</b>	<b>100%</b>		

Prepared by: LAWA Noise Management  
\*Data source: LAX ANOMS

**ANOMS Gate Penetration - DAHJR**  
August 1-31, 2020

Altitude MSL (ft)	Count of Ops*	% of Ops	% of Ops Between Altitudes	% of Ops At or Above Altitudes
>6300	275	6.5%		
6000-6299	1048	24.6%		
5700-5999	1245	29.2%	60.2%	
5500-5699	567	13.3%	39.8%	
5000-5499	828	19.4%		93.0%
4500-4999	220	5.2%		
4000-4499	56	1.3%		99.4%
3500-3999	19	0.4%		
3000-3499	5	0.1%		100.0%
2500-2999	0	0.0%		
<2500	0	0.0%		100.0%
<b>Grand Total</b>	<b>4263</b>	<b>100%</b>		

Prepared by: LAWA Noise Management  
\*Data source: LAX ANOMS



# 5. 6000 Foot Alt +/- 300 at DAHJR - 24 hours

**ANOMS Gate Penetration - DAHJR**  
September 1-30, 2020

Altitude MSL (ft)	Count of Ops*	% of Ops	% of Ops Between Altitudes	% of Ops At or Above Altitudes
>6300	222	5.2%	55.2%	90.0%
6000-6299	974	23.0%		
5700-5999	1141	27.0%		
5500-5699	564	13.3%		
5000-5499	907	21.4%		
4500-4999	305	7.2%		
4000-4499	86	2.0%		
3500-3999	28	0.7%		
3000-3499	5	0.1%		
2500-2999	1	0.0%		
<2500	0	0.0%	100.0%	
<b>Grand Total</b>	<b>4233</b>	<b>100%</b>		

Prepared by: LAWA Noise Management  
\*Data source: LAX ANOMS

**ANOMS Gate Penetration - DAHJR**  
November 1-30, 2020

Altitude MSL (ft)	Count of Ops*	% of Ops	% of Ops Between Altitudes	% of Ops At or Above Altitudes
>6300	353	7.5%	54.1%	88.8%
6000-6299	969	20.5%		
5700-5999	1232	26.1%		
5500-5699	660	14.0%		
5000-5499	977	20.7%		
4500-4999	363	7.7%		
4000-4499	124	2.6%		
3500-3999	30	0.6%		
3000-3499	10	0.2%		
2500-2999	3	0.1%		
<2500	0	0.0%	100.0%	
<b>Grand Total</b>	<b>4721</b>	<b>100%</b>		

Prepared by: LAWA Noise Management  
\*Data source: LAX ANOMS

**ANOMS Gate Penetration - DAHJR**  
October 1-31, 2020

Altitude MSL (ft)	Count of Ops*	% of Ops	% of Ops Between Altitudes	% of Ops At or Above Altitudes
>6300	282	6.1%	57.8%	89.4%
6000-6299	1104	23.7%		
5700-5999	1305	28.0%		
5500-5699	583	12.5%		
5000-5499	885	19.0%		
4500-4999	365	7.8%		
4000-4499	86	1.8%		
3500-3999	28	0.6%		
3000-3499	10	0.2%		
2500-2999	4	0.1%		
<2500	1	0.0%	100.0%	
<b>Grand Total</b>	<b>4653</b>	<b>100%</b>		

Prepared by: LAWA Noise Management  
\*Data source: LAX ANOMS

**ANOMS Gate Penetration - DAHJR**  
December 1-31, 2020

Altitude MSL (ft)	Count of Ops*	% of Ops	% of Ops Between Altitudes	% of Ops At or Above Altitudes
>6300	235	5.1%	47.4%	84.4%
6000-6299	797	17.4%		
5700-5999	1134	24.8%		
5500-5699	610	13.3%		
5000-5499	1081	23.6%		
4500-4999	496	10.8%		
4000-4499	160	3.5%		
3500-3999	35	0.8%		
3000-3499	20	0.4%		
2500-2999	4	0.1%		
<2500	0	0.0%	100.0%	
<b>Grand Total</b>	<b>4572</b>	<b>100%</b>		

Prepared by: LAWA Noise Management  
\*Data source: LAX ANOMS



# 5. 6000 Foot Alt +/- 300 at DAHJR - 24 hours

**ANOMS Gate Penetration - DAHJR**  
January 1-31, 2021

Altitude MSL (ft)	Count of Ops*	% of Ops	% of Ops Between Altitudes	% of Ops At or Above Altitudes
>6300	224	5.4%	50.1%	86.8%
6000-6299	799	19.1%		
5700-5999	1073	25.6%		
5500-5699	615	14.7%		
5000-5499	924	22.1%		
4500-4999	360	8.6%		
4000-4499	114	2.7%		
3500-3999	45	1.1%		
3000-3499	25	0.6%		
2500-2999	6	0.1%		
<2500	1	0.0%	100.0%	
<b>Grand Total</b>	<b>4186</b>	<b>100%</b>		

Prepared by: LAWA Noise Management  
\*Data source: LAX ANOMS

**ANOMS Gate Penetration - DAHJR**  
March 1-31, 2021

Altitude MSL (ft)	Count of Ops*	% of Ops	% of Ops Between Altitudes	% of Ops At or Above Altitudes
>6300	249	5.8%	51.9%	87.7%
6000-6299	865	20.0%		
5700-5999	1129	26.1%		
5500-5699	564	13.0%		
5000-5499	982	22.7%		
4500-4999	376	8.7%		
4000-4499	114	2.6%		
3500-3999	34	0.8%		
3000-3499	5	0.1%		
2500-2999	4	0.1%		
<2500	0	0.0%	100.0%	
<b>Grand Total</b>	<b>4322</b>	<b>100%</b>		

Prepared by: LAWA Noise Management  
\*Data source: LAX ANOMS

**ANOMS Gate Penetration - DAHJR**  
February 1-28, 2021

Altitude MSL (ft)	Count of Ops*	% of Ops	% of Ops Between Altitudes	% of Ops At or Above Altitudes
>6300	263	6.2%	52.1%	88.2%
6000-6299	797	18.9%		
5700-5999	1139	27.0%		
5500-5699	576	13.6%		
5000-5499	950	22.5%		
4500-4999	338	8.0%		
4000-4499	118	2.8%		
3500-3999	30	0.7%		
3000-3499	10	0.2%		
2500-2999	2	0.0%		
<2500	1	0.0%	100.0%	
<b>Grand Total</b>	<b>4224</b>	<b>100%</b>		

Prepared by: LAWA Noise Management  
\*Data source: LAX ANOMS

**ANOMS Gate Penetration - DAHJR**  
April 1-30, 2021

Altitude MSL (ft)	Count of Ops*	% of Ops	% of Ops Between Altitudes	% of Ops At or Above Altitudes
>6300	305	6.5%	54.5%	90.4%
6000-6299	1062	22.5%		
5700-5999	1209	25.6%		
5500-5699	652	13.8%		
5000-5499	1044	22.1%		
4500-4999	335	7.1%		
4000-4499	90	1.9%		
3500-3999	25	0.5%		
3000-3499	4	0.1%		
2500-2999	1	0.0%		
<2500	0	0.0%	100.0%	
<b>Grand Total</b>	<b>4727</b>	<b>100%</b>		

Prepared by: LAWA Noise Management  
\*Data source: LAX ANOMS

# 5. 6000 Foot Alt +/- 300 at DAHJR - 24 hours

**ANOMS Gate Penetration - DAHJR**  
**May 1-31, 2021**

Altitude MSL (ft)	Count of Ops*	% of Ops	% of Ops Between Altitudes	% of Ops At or Above Altitudes
>6300	289	5.0%		
6000-6299	1126	19.6%	53.0%	90.2%
5700-5999	1624	28.3%		
5500-5699	867	15.1%	47.0%	
5000-5499	1271	22.2%		99.4%
4500-4999	427	7.4%		
4000-4499	99	1.7%		99.9%
3500-3999	25	0.4%		
3000-3499	5	0.1%		
2500-2999	3	0.1%		
<2500	1	0.0%		100.0%
<b>Grand Total</b>	<b>5737</b>	<b>100%</b>		

Prepared by: LAWA Noise Management  
 \*Data source: LAX ANOMS

**ANOMS Gate Penetration - DAHJR**  
**Jun 1-30, 2021**

Altitude MSL (ft)	Count of Ops*	% of Ops	% of Ops Between Altitudes	% of Ops At or Above Altitudes
>6300	419	6.4%		
6000-6299	1498	22.9%	58.6%	93.1%
5700-5999	1918	29.3%		
5500-5699	963	14.7%	41.4%	
5000-5499	1292	19.8%		99.6%
4500-4999	348	5.3%		
4000-4499	76	1.2%		100.0%
3500-3999	15	0.2%		
3000-3499	7	0.1%		
2500-2999	2	0.0%		
<2500	1	0.0%		100.0%
<b>Grand Total</b>	<b>6539</b>	<b>100%</b>		

Prepared by: LAWA Noise Management  
 \*Data source: LAX ANOMS

## 6. DAHJR - 0100 to 0500 totals

Altitude MSL (ft)	Time of Night						Totals by Height
	12:00 to 12:59 AM	1:00 to 1:59 AM	2:00 to 2:59 AM	3:00 to 3:59 AM	4:00 to 4:59 AM	5:00 to 5:59 AM	
>6000	15	5	2	5	14	36	<b>77</b>
5750-6000	18	2	1	7	7	10	<b>45</b>
5500-5749	6	1	1	2	1	7	<b>18</b>
5250-5499	2	1	2	2	0	4	<b>11</b>
5000-5249	5	0	2	2	1	4	<b>14</b>
4750-4999	1	1	0	0	0	0	<b>2</b>
<4750	1	1	0	0	2	2	<b>6</b>
<b>Total of All Flights</b>	<b>48</b>	<b>11</b>	<b>8</b>	<b>18</b>	<b>25</b>	<b>63</b>	<b>173</b>
	<b>1 to 5 Total</b>		<b>19</b>				

Altitude MSL (ft)	Time of Night						Totals by Height
	12:00 to 12:59 AM	1:00 to 1:59 AM	2:00 to 2:59 AM	3:00 to 3:59 AM	4:00 to 4:59 AM	5:00 to 5:59 AM	
>6000	24	13	11	9	58	72	<b>187</b>
5750-6000	13	4	3	0	9	19	<b>48</b>
5500-5749	6	0	1	1	2	6	<b>16</b>
5250-5499	3	2	1	1	2	8	<b>17</b>
5000-5249	2	1	1	1	1	3	<b>9</b>
4750-4999	3	0	0	0	0	0	<b>3</b>
<4750	6	1	0	0	2	6	<b>15</b>
<b>Total of All Flights</b>	<b>57</b>	<b>21</b>	<b>17</b>	<b>12</b>	<b>74</b>	<b>114</b>	<b>295</b>
	<b>1 to 5 Total</b>		<b>17</b>				

Oct 2018  
19 flights

Nov 2018  
17 flights

## 6. DAHJR - 0100 to 0500 totals

Altitude MSL (ft)	Time of Night						Totals by Height
	12:00 to 12:59 AM	1:00 to 1:59 AM	2:00 to 2:59 AM	3:00 to 3:59 AM	4:00 to 4:59 AM	5:00 to 5:59 AM	
>6000	27	10	8	6	28	48	<b>127</b>
5750-6000	13	1	2	1	15	32	<b>64</b>
5500-5749	11	1	0	1	7	10	<b>30</b>
5250-5499	6	0	2	0	8	3	<b>19</b>
5000-5249	6	0	1	0	3	4	<b>14</b>
4750-4999	0	0	0	0	1	2	<b>3</b>
<4750	2	0	0	1	0	3	<b>6</b>
<b>Total of All Flights</b>	<b>65</b>	<b>12</b>	<b>13</b>	<b>9</b>	<b>62</b>	<b>102</b>	<b>263</b>
	<b>1 to 5 Total</b>		<b>25</b>				

Altitude MSL (ft)	Time of Night						Totals by Height
	12:00 to 12:59 AM	1:00 to 1:59 AM	2:00 to 2:59 AM	3:00 to 3:59 AM	4:00 to 4:59 AM	5:00 to 5:59 AM	
>6000	10	6	6	4	3	13	<b>42</b>
5750-6000	6	2	0	0	5	6	<b>19</b>
5500-5749	9	0	1	1	2	3	<b>16</b>
5250-5499	2	0	1	0	3	4	<b>10</b>
5000-5249	2	0	0	1	0	0	<b>3</b>
4750-4999	1	0	0	1	0	1	<b>3</b>
<4750	2	0	0	2	0	1	<b>5</b>
<b>Total of All Flights</b>	<b>32</b>	<b>8</b>	<b>8</b>	<b>9</b>	<b>13</b>	<b>28</b>	<b>98</b>
	<b>1 to 5 Total</b>		<b>12</b>				

Dec 2018  
25 flights

Jan 2019  
12 flights

## 6. DAHJR - 0100 to 0500 totals

Altitude MSL (ft)	Time of Night						Totals by Height
	12:00 to 12:59 AM	1:00 to 1:59 AM	2:00 to 2:59 AM	3:00 to 3:59 AM	4:00 to 4:59 AM	5:00 to 5:59 AM	
>6000	10	4	3	1	7	9	<b>34</b>
5750-6000	5	0	0	4	1	2	<b>12</b>
5500-5749	3	0	0	0	3	2	<b>8</b>
5250-5499	2	1	0	0	1	0	<b>4</b>
5000-5249	1	0	0	1	0	2	<b>4</b>
4750-4999	24	6	11	2	26	40	<b>109</b>
<4750	1	0	0	0	0	3	<b>4</b>
<b>Total of All Flights</b>	<b>46</b>	<b>11</b>	<b>14</b>	<b>8</b>	<b>38</b>	<b>58</b>	<b>175</b>
	<b>1 to 5 Total</b>		<b>51</b>				

Altitude MSL (ft)	Time of Night						Totals by Height
	12:00 to 12:59 AM	1:00 to 1:59 AM	2:00 to 2:59 AM	3:00 to 3:59 AM	4:00 to 4:59 AM	5:00 to 5:59 AM	
>6000	15	5	2	4	10	11	<b>47</b>
5750-6000	38	12	2	17	45	52	<b>166</b>
5500-5749	7	0	0	0	3	0	<b>10</b>
5250-5499	1	0	1	0	3	5	<b>10</b>
5000-5249	1	0	0	0	2	3	<b>6</b>
4750-4999	1	1	0	0	1	0	<b>3</b>
<4750	2	0	0	0	1	0	<b>3</b>
<b>Total of All Flights</b>	<b>65</b>	<b>18</b>	<b>5</b>	<b>21</b>	<b>65</b>	<b>71</b>	<b>245</b>
	<b>1 to 5 Total</b>		<b>12</b>				

Feb 2019  
51 flights

Mar 2019  
12 flights

## 6. DAHJR - 0100 to 0500 totals

Altitude MSL (ft)	Time of Night						Totals by Height
	12:59 AM	1:00 to 1:59 AM	2:00 to 2:59 AM	3:00 to 3:59 AM	4:00 to 4:59 AM	5:00 to 5:59 AM	
>6000	26	20	10	22	58	56	<b>192</b>
5750-6000	23	3	2	7	6	25	<b>66</b>
5500-5749	5	2	0	1	1	3	<b>12</b>
5250-5499	1	0	0	0	0	1	<b>2</b>
5000-5249	1	0	0	0	1	2	<b>4</b>
4750-4999	0	0	0	0	0	0	<b>0</b>
<4750	2	0	1	0	0	0	<b>3</b>
<b>Total of All Flights</b>	<b>58</b>	<b>25</b>	<b>13</b>	<b>30</b>	<b>66</b>	<b>87</b>	<b>279</b>
	<b>1 to 5 Total</b>			<b>6</b>			

Altitude MSL (ft)	Time of Night						Totals by Height
	12:00 to 12:59 AM	1:00 to 1:59 AM	2:00 to 2:59 AM	3:00 to 3:59 AM	4:00 to 4:59 AM	5:00 to 5:59 AM	
>6000	41	10	5	15	47	49	<b>167</b>
5750-6000	17	5	0	1	15	17	<b>55</b>
5500-5749	6	2	0	1	1	2	<b>12</b>
5250-5499	2	0	0	0	1	0	<b>3</b>
5000-5249	6	0	0	0	0	2	<b>8</b>
4750-4999	2	0	0	0	0	1	<b>3</b>
<4750	4	0	0	1	0	0	<b>5</b>
<b>Total of All Flights</b>	<b>78</b>	<b>17</b>	<b>5</b>	<b>18</b>	<b>64</b>	<b>71</b>	<b>253</b>
	<b>1 to 5 Total</b>			<b>6</b>			

Apr 2019  
6 flights

May 2019  
6 flights



## 6. DAHJR - 0100 to 0500 totals

Altitude MSL (ft)	Time of Night						Totals by Height
	12:00 to 12:59 AM	1:00 to 1:59 AM	2:00 to 2:59 AM	3:00 to 3:59 AM	4:00 to 4:59 AM	5:00 to 5:59 AM	
>6000	44	5	3	19	63	91	225
5750-6000	21	5	2	5	15	31	79
5500-5749	11	0	0	2	1	3	17
5250-5499	4	0	0	0	0	2	6
5000-5249	4	0	0	1	0	0	5
4750-4999	4	1	0	0	0	1	6
<4750	4	1	0	1	1	1	8
<b>Total of All Flights</b>	<b>92</b>	<b>12</b>	<b>5</b>	<b>28</b>	<b>80</b>	<b>129</b>	<b>346</b>
		<b>1 to 5 Total</b>		<b>8</b>			

Jun 2019  
8 flights

Altitude MSL (ft)	Time of Night						Totals by Height
	12:00 to 12:59 AM	1:00 to 1:59 AM	2:00 to 2:59 AM	3:00 to 3:59 AM	4:00 to 4:59 AM	5:00 to 5:59 AM	
>6000	56	8	7	15	39	55	180
5750-6000	29	1	2	3	14	25	74
5500-5749	9	0	1	0	2	1	13
5250-5499	3	0	0	0	0	2	5
5000-5249	3	0	0	0	0	1	4
4750-4999	1	0	0	0	0	0	1
<4750	2	0	0	0	0	0	2
<b>Total of All Flights</b>	<b>103</b>	<b>9</b>	<b>10</b>	<b>18</b>	<b>55</b>	<b>84</b>	<b>279</b>
		<b>1 to 5 Total</b>		<b>3</b>			

Jul 2019  
3 flights

## 6. DAHJR - 0100 to 0500 totals

Altitude MSL (ft)	Time of Night						Totals by Height
	12:00 to 12:59 AM	1:00 to 1:59 AM	2:00 to 2:59 AM	3:00 to 3:59 AM	4:00 to 4:59 AM	5:00 to 5:59 AM	
>6000	35	3	13	9	43	61	164
5750-6000	26	4	1	0	15	22	68
5500-5749	9	4	1	0	0	1	15
5250-5499	2	0	0	0	0	2	4
5000-5249	5	0	1	0	0	0	6
4750-4999	2	0	0	0	0	1	3
<4750	1	0	0	0	0	1	2
<b>Total of All Flights</b>	<b>80</b>	<b>11</b>	<b>16</b>	<b>9</b>	<b>58</b>	<b>88</b>	<b>262</b>
	<b>1 to 5 Total</b>		<b>6</b>				

Aug 2019  
6 flights

Altitude MSL (ft)	Time of Night						Totals by Height
	12:00 to 12:59 AM	1:00 to 1:59 AM	2:00 to 2:59 AM	3:00 to 3:59 AM	4:00 to 4:59 AM	5:00 to 5:59 AM	
>6000	27	4	1	0	4	25	61
5750-6000	10	0	0	1	3	11	25
5500-5749	6	0	0	0	1	1	8
5250-5499	5	0	0	0	0	0	5
5000-5249	3	0	0	0	0	1	4
4750-4999	1	0	0	0	0	0	1
<4750	1	0	0	0	0	0	1
<b>Total of All Flights</b>	<b>53</b>	<b>4</b>	<b>1</b>	<b>1</b>	<b>8</b>	<b>38</b>	<b>105</b>
	<b>1 to 5 Total</b>		<b>1</b>				

Sep 2019  
1 flight

## 6. DAHJR - 0100 to 0500 totals

Altitude MSL (ft)	Time of Night						Totals by Height
	12:00 to 12:59 AM	1:00 to 1:59 AM	2:00 to 2:59 AM	3:00 to 3:59 AM	4:00 to 4:59 AM	5:00 to 5:59 AM	
>6000	21	2	2	3	3	24	55
5750-6000	6	0	0	1	0	6	13
5500-5749	6	0	0	0	0	3	9
5250-5499	1	0	0	0	1	0	2
5000-5249	1	0	0	0	0	1	2
4750-4999	0	0	0	0	0	3	3
<4750	3	0	0	0	0	0	3
<b>Total of All Flights</b>	<b>38</b>	<b>2</b>	<b>2</b>	<b>4</b>	<b>4</b>	<b>37</b>	<b>87</b>
	<b>1 to 5 Total</b>			<b>1</b>			

Altitude MSL (ft)	Time of Night						Totals by Height
	12:00 to 12:59 AM	1:00 to 1:59 AM	2:00 to 2:59 AM	3:00 to 3:59 AM	4:00 to 4:59 AM	5:00 to 5:59 AM	
>6000	14	1	2	5	12	37	71
5750-6000	6	1	0	1	4	21	33
5500-5749	4	0	1	0	0	4	9
5250-5499	2	0	0	0	2	3	7
5000-5249	1	0	0	0	0	2	3
4750-4999	2	0	0	0	0	1	3
<4750	1	0	0	0	1	0	2
<b>Total of All Flights</b>	<b>30</b>	<b>2</b>	<b>3</b>	<b>6</b>	<b>19</b>	<b>68</b>	<b>128</b>
	<b>1 to 5 Total</b>			<b>4</b>			

Oct 2019  
1 flight

Nov 2019  
4 flights

## 6. DAHJR - 0100 to 0500 totals

Altitude MSL (ft)	Time of Night						Totals by Height
	12:00 to 12:59 AM	1:00 to 1:59 AM	2:00 to 2:59 AM	3:00 to 3:59 AM	4:00 to 4:59 AM	5:00 to 5:59 AM	
>6000	6	0	0	0	0	0	6
5750-6000	6	1	0	0	0	0	7
5500-5749	3	0	0	0	0	0	3
5250-5499	0	0	0	0	0	0	0
5000-5249	2	0	0	0	0	0	2
4750-4999	1	0	0	0	1	0	2
<4750	0	0	0	0	0	0	0
<b>Total of All Flights</b>	<b>18</b>	<b>1</b>	<b>0</b>	<b>0</b>	<b>1</b>	<b>0</b>	<b>20</b>
<b>1 to 5 Total</b>			<b>1</b>				

Dec 2019  
1 flight

Altitude MSL (ft)	Time of Night						Totals by Height
	12:00 to 12:59 AM	1:00 to 1:59 AM	2:00 to 2:59 AM	3:00 to 3:59 AM	4:00 to 4:59 AM	5:00 to 5:59 AM	
>6000	11	2	11	10	25	54	113
5750-6000	7	0	2	3	5	32	49
5500-5749	4	3	1	1	1	8	18
5250-5499	1	0	0	1	2	0	4
5000-5249	1	0	0	0	1	4	6
4750-4999	0	1	1	0	0	2	4
<4750	3	1	0	0	0	1	5
<b>Total of All Flights</b>	<b>27</b>	<b>7</b>	<b>15</b>	<b>15</b>	<b>34</b>	<b>101</b>	<b>199</b>
<b>1 to 5 Total</b>			<b>13</b>				

Jan 2020  
13 flights

## 6. DAHJR - 0100 to 0500 totals

Altitude MSL (ft)	Time of Night						Totals by Height
	12:00 to 12:59 AM	1:00 to 1:59 AM	2:00 to 2:59 AM	3:00 to 3:59 AM	4:00 to 4:59 AM	5:00 to 5:59 AM	
>6000	8	1	0	2	6	33	50
5750-6000	6	0	3	1	4	7	21
5500-5749	0	0	0	0	1	5	6
5250-5499	1	0	1	0	2	1	5
5000-5249	1	0	0	0	0	2	3
4750-4999	1	0	0	0	1	2	4
<4750	0	0	0	1	0	2	3
<b>Total of All Flights</b>	<b>17</b>	<b>1</b>	<b>4</b>	<b>4</b>	<b>14</b>	<b>52</b>	<b>92</b>
<b>1 to 5 Total</b>			<b>6</b>				

Feb 2020  
6 flights

Altitude MSL (ft)	Time of Night						Totals by Height
	12:00 to 12:59 AM	1:00 to 1:59 AM	2:00 to 2:59 AM	3:00 to 3:59 AM	4:00 to 4:59 AM	5:00 to 5:59 AM	
>6000	9	1	0	2	2	12	26
5750-6000	7	1	0	0	1	5	14
5500-5749	0	0	2	0	1	2	5
5250-5499	0	0	0	0	0	2	2
5000-5249	1	0	0	1	0	0	2
4750-4999	1	0	1	0	0	0	2
<4750	1	0	0	0	0	2	3
<b>Total of All Flights</b>	<b>19</b>	<b>2</b>	<b>3</b>	<b>3</b>	<b>4</b>	<b>23</b>	<b>54</b>
<b>1 to 5 Total</b>			<b>5</b>				

Mar 2020  
5 flights

## 6. DAHJR - 0100 to 0500 totals

Apr 2020  
4 flights

Altitude MSL (ft)	Time of Night						Totals by Height
	12:00 to 12:59 AM	1:00 to 1:59 AM	2:00 to 2:59 AM	3:00 to 3:59 AM	4:00 to 4:59 AM	5:00 to 5:59 AM	
>6000	3	0	1	3	6	1	14
5750-6000	0	1	0	0	1	0	2
5500-5749	2	0	0	0	2	0	4
5250-5499	0	0	1	0	0	0	1
5000-5249	0	1	0	0	0	0	1
4750-4999	0	0	0	0	0	0	0
<4750	0	0	0	0	0	0	0
<b>Total of All Flights</b>	<b>5</b>	<b>2</b>	<b>2</b>	<b>3</b>	<b>9</b>	<b>1</b>	<b>22</b>
		<b>1 to 5 Total</b>		<b>4</b>			

May 2020  
7 flights

Altitude MSL (ft)	Time of Night						Totals by Height
	12:00 to 12:59 AM	1:00 to 1:59 AM	2:00 to 2:59 AM	3:00 to 3:59 AM	4:00 to 4:59 AM	5:00 to 5:59 AM	
>6000	3	9	5	6	6	4	33
5750-6000	0	5	1	1	1	0	8
5500-5749	0	0	0	0	2	3	5
5250-5499	0	1	1	1	0	0	3
5000-5249	0	1	0	0	0	0	1
4750-4999	0	0	0	0	0	0	0
<4750	0	1	0	0	0	0	1
<b>Total of All Flights</b>	<b>3</b>	<b>17</b>	<b>7</b>	<b>8</b>	<b>9</b>	<b>7</b>	<b>51</b>
		<b>1 to 5 Total</b>		<b>7</b>			



## 6. DAHJR - 0100 to 0500 totals

Jun 2020  
0 flights

Altitude MSL (ft)	Time of Night						Totals by Height
	12:00 to 12:59 AM	1:00 to 1:59 AM	2:00 to 2:59 AM	3:00 to 3:59 AM	4:00 to 4:59 AM	5:00 to 5:59 AM	
>6000	1	0	0	0	0	3	4
5750-6000	2	0	0	0	0	0	2
5500-5749	2	0	0	0	0	0	2
5250-5499	0	0	0	0	0	1	1
5000-5249	0	0	0	0	0	0	0
4750-4999	0	0	0	0	0	0	0
<4750	0	0	0	0	0	0	0
<b>Total of All Flights</b>	<b>5</b>	<b>0</b>	<b>0</b>	<b>0</b>	<b>0</b>	<b>4</b>	<b>9</b>
		<b>1 to 5 Total</b>		<b>0</b>			

Jul 2020  
9 flights

Altitude MSL (ft)	Time of Night						Totals by Height
	12:00 to 12:59 AM	1:00 to 1:59 AM	2:00 to 2:59 AM	3:00 to 3:59 AM	4:00 to 4:59 AM	5:00 to 5:59 AM	
>6000	7	3	3	6	4	14	37
5750-6000	2	2	2	1	4	2	13
5500-5749	2	0	1	2	1	0	6
5250-5499	0	0	0	0	0	0	0
5000-5249	0	0	0	2	1	0	3
4750-4999	0	0	1	1	0	1	3
<4750	0	0	0	0	0	0	0
<b>Total of All Flights</b>	<b>11</b>	<b>5</b>	<b>7</b>	<b>12</b>	<b>10</b>	<b>17</b>	<b>62</b>
		<b>1 to 5 Total</b>		<b>9</b>			

## 6. DAHJR - 0100 to 0500 totals

Altitude MSL (ft)	Time of Night						Totals by Height
	12:00 to 12:59 AM	1:00 to 1:59 AM	2:00 to 2:59 AM	3:00 to 3:59 AM	4:00 to 4:59 AM	5:00 to 5:59 AM	
>6000	2	0	4	6	5	11	28
5750-6000	1	0	0	0	5	3	9
5500-5749	2	1	0	0	0	0	3
5250-5499	0	1	0	0	0	2	3
5000-5249	0	0	0	0	0	0	0
4750-4999	0	0	0	0	0	0	0
<4750	0	0	0	0	0	0	0
<b>Total of All Flights</b>	<b>5</b>	<b>2</b>	<b>4</b>	<b>6</b>	<b>10</b>	<b>16</b>	<b>43</b>
		<b>1 to 5 Total</b>		<b>2</b>			

Aug 2020  
2 flights

Altitude MSL (ft)	Time of Night						Totals by Height
	12:00 to 12:59 AM	1:00 to 1:59 AM	2:00 to 2:59 AM	3:00 to 3:59 AM	4:00 to 4:59 AM	5:00 to 5:59 AM	
>6000	2	2	7	8	10	21	50
5750-6000	2	1	4	0	2	5	14
5500-5749	1	1	0	0	0	0	2
5250-5499	0	0	0	0	0	0	0
5000-5249	1	0	0	0	0	1	2
4750-4999	0	0	0	0	0	0	0
<4750	0	0	0	0	0	0	0
<b>Total of All Flights</b>	<b>6</b>	<b>4</b>	<b>11</b>	<b>8</b>	<b>12</b>	<b>27</b>	<b>68</b>
		<b>1 to 5 Total</b>		<b>1</b>			

Sep 2020  
2 flights

## 6. DAHJR - 0100 to 0500 totals

Altitude MSL (ft)	Time of Night						Totals by Height
	12:00 to 12:59 AM	1:00 to 1:59 AM	2:00 to 2:59 AM	3:00 to 3:59 AM	4:00 to 4:59 AM	5:00 to 5:59 AM	
>6000	7	3	2	7	9	37	65
5750-6000	1	3	0	5	2	7	18
5500-5749	0	1	2	0	0	2	5
5250-5499	0	0	0	1	0	2	3
5000-5249	0	0	0	0	0	3	3
4750-4999	0	0	1	1	0	1	3
<4750	0	0	0	0	0	2	2
<b>Total of All Flights</b>	<b>8</b>	<b>7</b>	<b>5</b>	<b>14</b>	<b>11</b>	<b>54</b>	<b>99</b>
		<b>1 to 5 Total</b>		<b>6</b>			

Oct 2020  
6 flights

Altitude MSL (ft)	Time of Night						Totals by Height
	12:00 to 12:59 AM	1:00 to 1:59 AM	2:00 to 2:59 AM	3:00 to 3:59 AM	4:00 to 4:59 AM	5:00 to 5:59 AM	
>6000	9	6	8	2	14	26	65
5750-6000	0	0	2	0	7	11	20
5500-5749	2	1	3	1	3	3	13
5250-5499	2	0	0	0	1	3	6
5000-5249	0	0	0	1	0	0	1
4750-4999	0	0	0	0	0	1	1
<4750	0	0	0	0	0	0	0
<b>Total of All Flights</b>	<b>13</b>	<b>7</b>	<b>13</b>	<b>4</b>	<b>25</b>	<b>44</b>	<b>106</b>
		<b>1 to 5 Total</b>		<b>10</b>			

Nov 2020  
10 flights

## 6. DAHJR - 0100 to 0500 totals

Altitude MSL (ft)	Time of Night						Totals by Height
	12:00 to 12:59 AM	1:00 to 1:59 AM	2:00 to 2:59 AM	3:00 to 3:59 AM	4:00 to 4:59 AM	5:00 to 5:59 AM	
>6000	1	7	2	4	9	12	35
5750-6000	1	1	0	0	1	5	8
5500-5749	4	1	0	0	0	1	6
5250-5499	0	0	0	0	0	4	4
5000-5249	0	0	0	0	0	0	0
4750-4999	0	0	0	0	0	0	0
<4750	0	0	0	0	0	0	0
<b>Total of All Flights</b>	<b>6</b>	<b>9</b>	<b>2</b>	<b>4</b>	<b>10</b>	<b>22</b>	<b>53</b>
		<b>1 to 5 Total</b>		<b>1</b>			

Altitude MSL (ft)	Time of Night						Totals by Height
	12:00 to 12:59 AM	1:00 to 1:59 AM	2:00 to 2:59 AM	3:00 to 3:59 AM	4:00 to 4:59 AM	5:00 to 5:59 AM	
>6000	1	1	0	1	7	13	23
5750-6000	2	0	0	0	3	5	10
5500-5749	1	0	0	0	0	0	1
5250-5499	1	0	0	0	1	1	3
5000-5249	1	0	0	0	0	0	1
4750-4999	1	0	0	0	0	0	1
<4750	0	0	0	0	0	0	0
<b>Total of All Flights</b>	<b>7</b>	<b>1</b>	<b>0</b>	<b>1</b>	<b>11</b>	<b>19</b>	<b>39</b>
		<b>1 to 5 Total</b>		<b>1</b>			

Dec 2020  
1 flight

Jan 2021  
1 flight

## 6. DAHJR - 0100 to 0500 totals

Altitude MSL (ft)	Time of Night						Totals by Height
	12:00 to 12:59 AM	1:00 to 1:59 AM	2:00 to 2:59 AM	3:00 to 3:59 AM	4:00 to 4:59 AM	5:00 to 5:59 AM	
>6000	2	1	2	1	2	20	28
5750-6000	1	1	0	1	0	6	9
5500-5749	2	0	0	0	5	3	10
5250-5499	1	0	3	1	2	3	10
5000-5249	0	0	1	1	1	2	5
4750-4999	0	0	0	0	0	0	0
<4750	0	0	0	0	0	2	2
<b>Total of All Flights</b>	<b>6</b>	<b>2</b>	<b>6</b>	<b>4</b>	<b>10</b>	<b>36</b>	<b>64</b>
		<b>1 to 5 Total</b>		<b>14</b>			

Feb 2021  
14 flights

Altitude MSL (ft)	Time of Night						Totals by Height
	12:00 to 12:59 AM	1:00 to 1:59 AM	2:00 to 2:59 AM	3:00 to 3:59 AM	4:00 to 4:59 AM	5:00 to 5:59 AM	
>6000	4	2	6	2	7	22	43
5750-6000	3	0	0	1	4	7	15
5500-5749	1	1	0	0	0	1	3
5250-5499	1	0	0	0	0	1	2
5000-5249	0	0	0	0	0	1	1
4750-4999	0	0	0	0	0	0	0
<4750	0	0	1	0	0	0	1
<b>Total of All Flights</b>	<b>9</b>	<b>3</b>	<b>7</b>	<b>3</b>	<b>11</b>	<b>32</b>	<b>65</b>
		<b>1 to 5 Total</b>		<b>2</b>			

Mar 2021  
2 flights

## 6. DAHJR - 0100 to 0500 totals

Altitude MSL (ft)	Time of Night						Totals by Height
	12:00 to 12:59 AM	1:00 to 1:59 AM	2:00 to 2:59 AM	3:00 to 3:59 AM	4:00 to 4:59 AM	5:00 to 5:59 AM	
>6000	0	5	10	3	14	25	57
5750-6000	1	4	2	2	1	7	17
5500-5749	0	0	0	1	0	1	2
5250-5499	0	0	0	0	0	1	1
5000-5249	0	0	0	0	0	0	0
4750-4999	0	0	0	0	0	0	0
<4750	0	0	1	0	0	0	1
<b>Total of All Flights</b>	<b>1</b>	<b>9</b>	<b>13</b>	<b>6</b>	<b>15</b>	<b>34</b>	<b>78</b>
<b>1 to 5 Total</b>			<b>2</b>				

Apr 2021  
2 flights

Altitude MSL (ft)	Time of Night						Totals by Height
	12:00 to 12:59 AM	1:00 to 1:59 AM	2:00 to 2:59 AM	3:00 to 3:59 AM	4:00 to 4:59 AM	5:00 to 5:59 AM	
>6000	5	1	0	1	0	3	10
5750-6000	2	1	0	0	0	1	4
5500-5749	2	1	0	0	0	0	3
5250-5499	0	0	0	0	0	0	0
5000-5249	2	0	0	0	0	0	2
4750-4999	1	0	0	0	0	0	1
<4750	1	0	0	0	0	0	1
<b>Total of All Flights</b>	<b>13</b>	<b>3</b>	<b>0</b>	<b>1</b>	<b>0</b>	<b>4</b>	<b>21</b>
<b>1 to 5 Total</b>			<b>1</b>				

May 2021  
1 flight



## 6. DAHJR - 0100 to 0500 totals

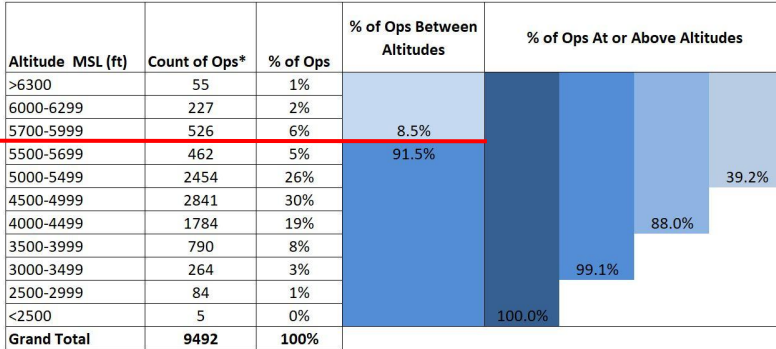
Altitude MSL (ft)	Time of Night						Totals by Height
	12:00 to 12:59 AM	1:00 to 1:59 AM	2:00 to 2:59 AM	3:00 to 3:59 AM	4:00 to 4:59 AM	5:00 to 5:59 AM	
>6000	10	3	10	7	8	16	54
5750-6000	4	0	0	0	4	7	15
5500-5749	1	2	2	0	1	2	8
5250-5499	2	0	0	0	0	2	4
5000-5249	1	0	1	0	0	0	2
4750-4999	0	0	0	1	0	0	1
<4750	0	0	0	0	0	1	1
<b>Total of All Flights</b>	<b>18</b>	<b>5</b>	<b>13</b>	<b>8</b>	<b>13</b>	<b>28</b>	<b>85</b>
		<b>1 to 5 Total</b>		<b>7</b>			

Jun 2021  
7 flights

# 7. 6000 Foot Alt +/- 300 at GADDO - 24 hours

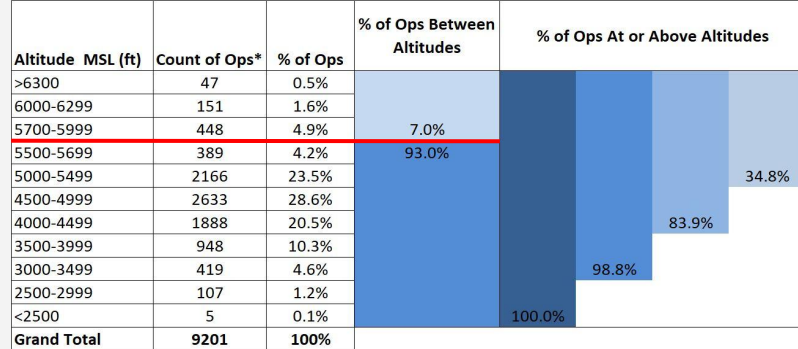
## ANOMS Gate Penetration - GADDO

September 1-30, 2018



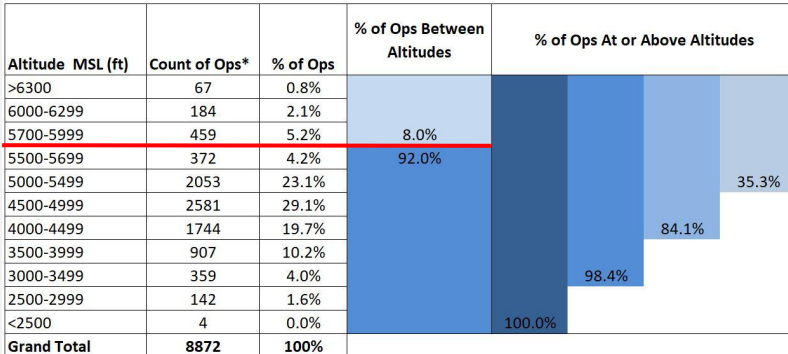
## ANOMS Gate Penetration - GADDO

October 1-31, 2018



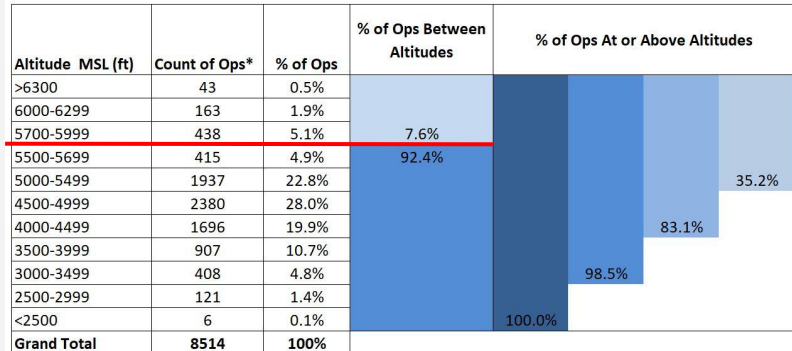
## ANOMS Gate Penetration - GADDO

November 1-30, 2018



## ANOMS Gate Penetration - GADDO

December 1-31, 2018



# 7. 6000 Foot Alt +/- 300 at GADDO - 24 hours

ANOMS Gate Penetration - GADDO  
January 1-31, 2019

Altitude MSL (ft)	Count of Ops*	% of Ops	% of Ops Between Altitudes	% of Ops At or Above Altitudes
>6300	41	0.6%	93.2%	100.0%
6000-6299	120	1.6%		
5700-5999	335	4.6%		
5500-5699	320	4.4%		
5000-5499	1572	21.6%		
4500-4999	1992	27.4%		
4000-4499	1577	21.7%		
3500-3999	799	11.0%		
3000-3499	375	5.2%		
2500-2999	138	1.9%		
<2500	5	0.1%	81.9%	32.8%
<b>Grand Total</b>	<b>7274</b>	<b>100%</b>		

ANOMS Gate Penetration - GADDO  
February 1-28, 2019

Altitude MSL (ft)	Count of Ops*	% of Ops	% of Ops Between Altitudes	% of Ops At or Above Altitudes
>6300	66	0.9%	91.4%	100.0%
6000-6299	156	2.0%		
5700-5999	437	5.7%		
5500-5699	440	5.7%		
5000-5499	1984	25.8%		
4500-4999	2145	27.9%		
4000-4499	1387	18.0%		
3500-3999	676	8.8%		
3000-3499	314	4.1%		
2500-2999	83	1.1%		
<2500	7	0.1%	86.0%	40.1%
<b>Grand Total</b>	<b>7695</b>	<b>100%</b>		

ANOMS Gate Penetration - GADDO  
March 1-31, 2019

Altitude MSL (ft)	Count of Ops*	% of Ops	% of Ops Between Altitudes	% of Ops At or Above Altitudes
>6300	52	0.6%	93.2%	100.0%
6000-6299	154	1.7%		
5700-5999	397	4.5%		
5500-5699	413	4.6%		
5000-5499	2259	25.4%		
4500-4999	2531	28.4%		
4000-4499	1739	19.5%		
3500-3999	873	9.8%		
3000-3499	375	4.2%		
2500-2999	107	1.2%		
<2500	7	0.1%	84.7%	36.8%
<b>Grand Total</b>	<b>8907</b>	<b>100%</b>		

ANOMS Gate Penetration - GADDO  
April 1-30, 2019

Altitude MSL (ft)	Count of Ops*	% of Ops	% of Ops Between Altitudes	% of Ops At or Above Altitudes
>6300	50	0.6%	92.2%	100.0%
6000-6299	162	1.8%		
5700-5999	490	5.4%		
5500-5699	435	4.8%		
5000-5499	2357	26.0%		
4500-4999	2629	29.0%		
4000-4499	1686	18.6%		
3500-3999	778	8.6%		
3000-3499	358	4.0%		
2500-2999	108	1.2%		
<2500	3	0.0%	86.2%	38.6%
<b>Grand Total</b>	<b>9056</b>	<b>100%</b>		

# 7. 6000 Foot Alt +/- 300 at GADDO - 24 hours

**ANOMS Gate Penetration - GADDO**  
May 1-31, 2019

Altitude MSL (ft)	Count of Ops*	% of Ops	% of Ops Between Altitudes	% of Ops At or Above Altitudes
>6300	52	0.6%		
6000-6299	162	1.8%		
5700-5999	477	5.2%	7.5%	
5500-5699	463	5.0%	92.5%	
5000-5499	2306	25.0%		37.4%
4500-4999	2752	29.8%		
4000-4499	1703	18.4%		85.7%
3500-3999	820	8.9%		
3000-3499	350	3.8%		98.3%
2500-2999	143	1.5%		
<2500	11	0.1%		100.0%
<b>Grand Total</b>	<b>9239</b>	<b>100%</b>		

Prepared by: LAWA Noise Management  
\*Data source: LAX ANOMS

**ANOMS Gate Penetration - GADDO**  
July 1-31, 2019

Altitude MSL (ft)	Count of Ops*	% of Ops	% of Ops Between Altitudes	% of Ops At or Above Altitudes
>6300	43	0.4%		
6000-6299	159	1.6%		
5700-5999	536	5.4%	7.5%	
5500-5699	511	5.2%	92.5%	
5000-5499	2886	29.2%		41.8%
4500-4999	3051	30.8%		
4000-4499	1741	17.6%		90.3%
3500-3999	678	6.9%		
3000-3499	231	2.3%		99.4%
2500-2999	55	0.6%		
<2500	0	0.0%		100.0%
<b>Grand Total</b>	<b>9891</b>	<b>100%</b>		

Prepared by: LAWA Noise Management  
\*Data source: LAX ANOMS

**ANOMS Gate Penetration - GADDO**  
June 1-30, 2019

Altitude MSL (ft)	Count of Ops*	% of Ops	% of Ops Between Altitudes	% of Ops At or Above Altitudes
>6300	41	0.4%		
6000-6299	186	2.0%		
5700-5999	522	5.5%	7.9%	
5500-5699	457	4.8%	92.1%	
5000-5499	2734	29.0%		41.8%
4500-4999	2832	30.0%		
4000-4499	1651	17.5%		89.3%
3500-3999	698	7.4%		
3000-3499	238	2.5%		99.2%
2500-2999	73	0.8%		
<2500	5	0.1%		100.0%
<b>Grand Total</b>	<b>9437</b>	<b>100%</b>		

Prepared by: LAWA Noise Management  
\*Data source: LAX ANOMS

**ANOMS Gate Penetration - GADDO**  
August 1-31, 2019

Altitude MSL (ft)	Count of Ops*	% of Ops	% of Ops Between Altitudes	% of Ops At or Above Altitudes
>6300	37	0.4%		
6000-6299	154	1.6%		
5700-5999	471	4.8%	6.8%	
5500-5699	472	4.8%	93.2%	
5000-5499	2731	27.9%		39.5%
4500-4999	3086	31.6%		
4000-4499	1782	18.2%		89.4%
3500-3999	737	7.5%		
3000-3499	252	2.6%		99.5%
2500-2999	49	0.5%		
<2500	2	0.0%		100.0%
<b>Grand Total</b>	<b>9773</b>	<b>100%</b>		

Prepared by: LAWA Noise Management  
\*Data source: LAX ANOMS

# 7. 6000 Foot Alt +/- 300 at GADDO - 24 hours

**ANOMS Gate Penetration - GADDO**  
September 1-30, 2019

Altitude MSL (ft)	Count of Ops*	% of Ops	% of Ops Between Altitudes	% of Ops At or Above Altitudes
>6300	44	0.5%		
6000-6299	156	1.8%		
5700-5999	461	5.3%	7.6%	
5500-5699	466	5.3%	92.4%	
5000-5499	2232	25.6%		38.5%
4500-4999	2507	28.8%		
4000-4499	1682	19.3%		86.6%
3500-3999	781	9.0%		
3000-3499	310	3.6%		99.1%
2500-2999	74	0.8%		
<2500	7	0.1%		100.0%
<b>Grand Total</b>	<b>8720</b>	<b>100%</b>		

Prepared by: LAWA Noise Management  
\*Data source: LAX ANOMS

**ANOMS Gate Penetration - GADDO**  
October 1-31, 2019

Altitude MSL (ft)	Count of Ops*	% of Ops	% of Ops Between Altitudes	% of Ops At or Above Altitudes
>6300	49	0.5%		
6000-6299	125	1.4%		
5700-5999	438	4.9%	6.8%	
5500-5699	370	4.1%	93.2%	
5000-5499	2041	22.7%		33.6%
4500-4999	2635	29.3%		
4000-4499	1881	20.9%		83.8%
3500-3999	917	10.2%		
3000-3499	435	4.8%		98.9%
2500-2999	96	1.1%		
<2500	7	0.1%		100.0%
<b>Grand Total</b>	<b>8994</b>	<b>100%</b>		

Prepared by: LAWA Noise Management  
\*Data source: LAX ANOMS

**ANOMS Gate Penetration - GADDO**  
November 1-30, 2019

Altitude MSL (ft)	Count of Ops*	% of Ops	% of Ops Between Altitudes	% of Ops At or Above Altitudes
>6300	27	0.3%		
6000-6299	120	1.5%		
5700-5999	350	4.3%	6.1%	
5500-5699	308	3.8%	93.9%	
5000-5499	1759	21.7%		31.7%
4500-4999	2394	29.6%		
4000-4499	1721	21.3%		82.5%
3500-3999	919	11.4%		
3000-3499	394	4.9%		98.7%
2500-2999	98	1.2%		
<2500	5	0.1%		100.0%
<b>Grand Total</b>	<b>8095</b>	<b>100%</b>		

Prepared by: LAWA Noise Management  
\*Data source: LAX ANOMS

**ANOMS Gate Penetration - GADDO**  
December 1-31, 2019

Altitude MSL (ft)	Count of Ops*	% of Ops	% of Ops Between Altitudes	% of Ops At or Above Altitudes
>6300	37	0.5%		
6000-6299	90	1.2%		
5700-5999	326	4.3%	5.9%	
5500-5699	323	4.2%	94.1%	
5000-5499	1878	24.6%		34.8%
4500-4999	2189	28.7%		
4000-4499	1513	19.8%		83.2%
3500-3999	768	10.1%		
3000-3499	383	5.0%		98.3%
2500-2999	118	1.5%		
<2500	11	0.1%		100.0%
<b>Grand Total</b>	<b>7636</b>	<b>100%</b>		

Prepared by: LAWA Noise Management  
\*Data source: LAX ANOMS

# 7. 6000 Foot Alt +/- 300 at GADDO - 24 hours

## ANOMS Gate Penetration - GADDO

January 1-31, 2020

Altitude MSL (ft)	Count of Ops*	% of Ops	% of Ops Between Altitudes	% of Ops At or Above Altitudes
>6300	50	0.6%	93.4%	100.0%
6000-6299	133	1.5%		
5700-5999	396	4.5%		
5500-5699	399	4.6%		
5000-5499	2124	24.3%		
4500-4999	2482	28.4%		
4000-4499	1771	20.3%		
3500-3999	874	10.0%		
3000-3499	385	4.4%		
2500-2999	121	1.4%		
<2500	8	0.1%	100.0%	100.0%
<b>Grand Total</b>	<b>8743</b>	<b>100%</b>		

Prepared by: LAWA Noise Management

\*Data source: LAX ANOMS

## ANOMS Gate Penetration - GADDO

February 1-29, 2020

Altitude MSL (ft)	Count of Ops*	% of Ops	% of Ops Between Altitudes	% of Ops At or Above Altitudes
>6300	35	0.5%	94.6%	100.0%
6000-6299	88	1.2%		
5700-5999	287	3.8%		
5500-5699	276	3.6%		
5000-5499	1546	20.3%		
4500-4999	2175	28.6%		
4000-4499	1678	22.1%		
3500-3999	936	12.3%		
3000-3499	441	5.8%		
2500-2999	132	1.7%		
<2500	10	0.1%	100.0%	100.0%
<b>Grand Total</b>	<b>7604</b>	<b>100%</b>		

Prepared by: LAWA Noise Management

\*Data source: LAX ANOMS

## ANOMS Gate Penetration - GADDO

March 1-31, 2020

Altitude MSL (ft)	Count of Ops*	% of Ops	% of Ops Between Altitudes	% of Ops At or Above Altitudes
>6300	18	0.3%	94.8%	100.0%
6000-6299	86	1.3%		
5700-5999	235	3.6%		
5500-5699	224	3.4%		
5000-5499	1261	19.2%		
4500-4999	1699	25.9%		
4000-4499	1439	21.9%		
3500-3999	873	13.3%		
3000-3499	534	8.1%		
2500-2999	180	2.7%		
<2500	22	0.3%	100.0%	100.0%
<b>Grand Total</b>	<b>6571</b>	<b>100%</b>		

Prepared by: LAWA Noise Management

\*Data source: LAX ANOMS

## ANOMS Gate Penetration - GADDO

April 1-30, 2020

Altitude MSL (ft)	Count of Ops*	% of Ops	% of Ops Between Altitudes	% of Ops At or Above Altitudes
>6300	13	0.6%	92.6%	100.0%
6000-6299	37	1.7%		
5700-5999	116	5.2%		
5500-5699	98	4.4%		
5000-5499	492	22.0%		
4500-4999	512	22.9%		
4000-4499	462	20.6%		
3500-3999	279	12.5%		
3000-3499	152	6.8%		
2500-2999	67	3.0%		
<2500	11	0.5%	100.0%	100.0%
<b>Grand Total</b>	<b>2239</b>	<b>100%</b>		

Prepared by: LAWA Noise Management

\*Data source: LAX ANOMS



# 7. 6000 Foot Alt +/- 300 at GADDO - 24 hours

**ANOMS Gate Penetration - GADDO**  
May 1-31, 2020

Altitude MSL (ft)	Count of Ops*	% of Ops	% of Ops Between Altitudes	% of Ops At or Above Altitudes	
>6300	24	0.9%	7.9%	92.1%	38.3%
6000-6299	56	2.0%			
5700-5999	137	5.0%			
5500-5699	145	5.3%			
5000-5499	687	25.1%			
4500-4999	656	23.9%			
4000-4499	548	20.0%			
3500-3999	309	11.3%			
3000-3499	138	5.0%			
2500-2999	39	1.4%			
<2500	5	0.1%	100.0%	98.5%	82.2%
<b>Grand Total</b>	<b>2742</b>	<b>100%</b>			

Prepared by: LAWA Noise Management  
\*Data source: LAX ANOMS

**ANOMS Gate Penetration - GADDO**  
July 1-31, 2020

Altitude MSL (ft)	Count of Ops*	% of Ops	% of Ops Between Altitudes	% of Ops At or Above Altitudes	
>6300	31	0.8%	8.6%	91.4%	40.3%
6000-6299	84	2.1%			
5700-5999	226	5.7%			
5500-5699	199	5.0%			
5000-5499	1065	26.7%			
4500-4999	1092	27.4%			
4000-4499	733	18.4%			
3500-3999	355	8.9%			
3000-3499	151	3.8%			
2500-2999	43	1.1%			
<2500	3	0.1%	100.0%	98.8%	86.1%
<b>Grand Total</b>	<b>3982</b>	<b>100%</b>			

Prepared by: LAWA Noise Management  
\*Data source: LAX ANOMS

**ANOMS Gate Penetration - GADDO**  
June 1-30, 2020

Altitude MSL (ft)	Count of Ops*	% of Ops	% of Ops Between Altitudes	% of Ops At or Above Altitudes	
>6300	27	0.9%	8.3%	91.7%	35.6%
6000-6299	59	1.9%			
5700-5999	175	5.5%			
5500-5699	137	4.3%			
5000-5499	725	23.0%			
4500-4999	823	26.1%			
4000-4499	650	20.6%			
3500-3999	362	11.5%			
3000-3499	154	4.9%			
2500-2999	43	1.4%			
<2500	1	0.0%	100.0%	98.6%	82.3%
<b>Grand Total</b>	<b>3156</b>	<b>100%</b>			

Prepared by: LAWA Noise Management  
\*Data source: LAX ANOMS

**ANOMS Gate Penetration - GADDO**  
August 1-31, 2020

Altitude MSL (ft)	Count of Ops*	% of Ops	% of Ops Between Altitudes	% of Ops At or Above Altitudes	
>6300	37	0.9%	7.5%	92.5%	34.6%
6000-6299	86	2.0%			
5700-5999	195	4.6%			
5500-5699	157	3.7%			
5000-5499	997	23.4%			
4500-4999	1208	28.4%			
4000-4499	896	21.0%			
3500-3999	454	10.7%			
3000-3499	180	4.2%			
2500-2999	44	1.0%			
<2500	5	0.1%	100.0%	98.8%	84.0%
<b>Grand Total</b>	<b>4259</b>	<b>100%</b>			

Prepared by: LAWA Noise Management  
\*Data source: LAX ANOMS

# 7. 6000 Foot Alt +/- 300 at GADDO - 24 hours

**ANOMS Gate Penetration - GADDO**  
September 1-30, 2020

Altitude MSL (ft)	Count of Ops*	% of Ops	% of Ops Between Altitudes	% of Ops At or Above Altitudes	
>6300	13	0.3%	94.0%	100.0%	79.7%
6000-6299	65	1.5%			
5700-5999	175	4.1%			
5500-5699	165	3.9%			
5000-5499	839	19.8%			
4500-4999	1113	26.3%			
4000-4499	1001	23.7%			
3500-3999	509	12.0%			
3000-3499	252	6.0%			
2500-2999	87	2.1%			
<2500	9	0.2%	100.0%		
<b>Grand Total</b>	<b>4228</b>	<b>100%</b>			

Prepared by: LAWA Noise Management  
\*Data source: LAX ANOMS

**ANOMS Gate Penetration - GADDO**  
October 1-31, 2020

Altitude MSL (ft)	Count of Ops*	% of Ops	% of Ops Between Altitudes	% of Ops At or Above Altitudes	
>6300	24	0.5%	93.2%	100.0%	80.8%
6000-6299	74	1.6%			
5700-5999	217	4.7%			
5500-5699	188	4.1%			
5000-5499	1005	21.7%			
4500-4999	1238	26.7%			
4000-4499	1006	21.7%			
3500-3999	537	11.6%			
3000-3499	250	5.4%			
2500-2999	95	2.0%			
<2500	7	0.2%	100.0%		
<b>Grand Total</b>	<b>4641</b>	<b>100%</b>			

Prepared by: LAWA Noise Management  
\*Data source: LAX ANOMS

**ANOMS Gate Penetration - GADDO**  
November 1-30, 2020

Altitude MSL (ft)	Count of Ops*	% of Ops	% of Ops Between Altitudes	% of Ops At or Above Altitudes	
>6300	42	0.9%	93.7%	100.0%	79.1%
6000-6299	70	1.5%			
5700-5999	183	3.9%			
5500-5699	174	3.7%			
5000-5499	912	19.4%			
4500-4999	1241	26.4%			
4000-4499	1102	23.4%			
3500-3999	590	12.5%			
3000-3499	288	6.1%			
2500-2999	101	2.1%			
<2500	6	0.1%	100.0%		
<b>Grand Total</b>	<b>4709</b>	<b>100%</b>			

Prepared by: LAWA Noise Management  
\*Data source: LAX ANOMS

**ANOMS Gate Penetration - GADDO**  
December 1-31, 2020

Altitude MSL (ft)	Count of Ops*	% of Ops	% of Ops Between Altitudes	% of Ops At or Above Altitudes	
>6300	20	0.4%	95.7%	100.0%	72.2%
6000-6299	39	0.9%			
5700-5999	137	3.0%			
5500-5699	145	3.2%			
5000-5499	734	16.1%			
4500-4999	1175	25.8%			
4000-4499	1036	22.7%			
3500-3999	731	16.1%			
3000-3499	401	8.8%			
2500-2999	130	2.9%			
<2500	6	0.1%	100.0%		
<b>Grand Total</b>	<b>4554</b>	<b>100%</b>			

Prepared by: LAWA Noise Management  
\*Data source: LAX ANOMS

# 7. 6000 Foot Alt +/- 300 at GADDO - 24 hours

**ANOMS Gate Penetration - GADDO**  
January 1-31, 2021

Altitude MSL (ft)	Count of Ops*	% of Ops	% of Ops Between Altitudes	% of Ops At or Above Altitudes
>6300	16	0.4%	95.4%	76.2%
6000-6299	35	0.8%		
5700-5999	140	3.4%		
5500-5699	139	3.3%		
5000-5499	775	18.6%		
4500-4999	1068	25.6%		
4000-4499	1009	24.2%		
3500-3999	560	13.4%		
3000-3499	311	7.4%		
2500-2999	110	2.6%		
<2500	13	0.3%	100.0%	
<b>Grand Total</b>	<b>4176</b>	<b>100%</b>		

Prepared by: LAWA Noise Management  
\*Data source: LAX ANOMS

**ANOMS Gate Penetration - GADDO**  
February 1-28, 2021

Altitude MSL (ft)	Count of Ops*	% of Ops	% of Ops Between Altitudes	% of Ops At or Above Altitudes
>6300	24	0.6%	94.7%	76.7%
6000-6299	59	1.4%		
5700-5999	139	3.3%		
5500-5699	130	3.1%		
5000-5499	777	18.4%		
4500-4999	1163	27.6%		
4000-4499	944	22.4%		
3500-3999	574	13.6%		
3000-3499	310	7.3%		
2500-2999	88	2.1%		
<2500	12	0.3%	100.0%	
<b>Grand Total</b>	<b>4220</b>	<b>100%</b>		

Prepared by: LAWA Noise Management  
\*Data source: LAX ANOMS

**ANOMS Gate Penetration - GADDO**  
March 1-31, 2021

Altitude MSL (ft)	Count of Ops*	% of Ops	% of Ops Between Altitudes	% of Ops At or Above Altitudes
>6300	19	0.4%	95.2%	76.5%
6000-6299	58	1.3%		
5700-5999	132	3.1%		
5500-5699	149	3.5%		
5000-5499	841	19.5%		
4500-4999	1154	26.7%		
4000-4499	947	21.9%		
3500-3999	594	13.8%		
3000-3499	337	7.8%		
2500-2999	78	1.8%		
<2500	7	0.2%	100.0%	
<b>Grand Total</b>	<b>4316</b>	<b>100%</b>		

Prepared by: LAWA Noise Management  
\*Data source: LAX ANOMS

**ANOMS Gate Penetration - GADDO**  
April 1-30, 2021

Altitude MSL (ft)	Count of Ops*	% of Ops	% of Ops Between Altitudes	% of Ops At or Above Altitudes
>6300	25	0.5%	93.5%	80.4%
6000-6299	80	1.7%		
5700-5999	203	4.3%		
5500-5699	183	3.9%		
5000-5499	963	20.4%		
4500-4999	1287	27.3%		
4000-4499	1055	22.4%		
3500-3999	566	12.0%		
3000-3499	277	5.9%		
2500-2999	74	1.6%		
<2500	6	0.1%	100.0%	
<b>Grand Total</b>	<b>4719</b>	<b>100%</b>		

Prepared by: LAWA Noise Management  
\*Data source: LAX ANOMS

# 7. 6000 Foot Alt +/- 300 at GADDO - 24 hours

**ANOMS Gate Penetration - GADDO**  
**May 1-31, 2021**

Altitude MSL (ft)	Count of Ops*	% of Ops	% of Ops Between Altitudes	% of Ops At or Above Altitudes
>6300	25	0.4%		
6000-6299	85	1.5%		
5700-5999	192	3.4%	5.3%	
5500-5699	167	2.9%	94.7%	
5000-5499	1137	19.8%		28.0%
4500-4999	1690	29.5%		
4000-4499	1331	23.2%		80.8%
3500-3999	697	12.2%		98.1%
3000-3499	298	5.2%		
2500-2999	101	1.8%		
<2500	7	0.1%		100.0%
<b>Grand Total</b>	<b>5730</b>	<b>100%</b>		

Prepared by: LAWA Noise Management  
 \*Data source: LAX ANOMS

**ANOMS Gate Penetration - GADDO**  
**Jun 1-30, 2021**

Altitude MSL (ft)	Count of Ops*	% of Ops	% of Ops Between Altitudes	% of Ops At or Above Altitudes
>6300	27	0.4%		
6000-6299	105	1.6%		
5700-5999	248	3.8%	5.8%	
5500-5699	277	4.2%	94.2%	
5000-5499	1563	23.9%		33.9%
4500-4999	1958	29.9%		
4000-4499	1400	21.4%		85.3%
3500-3999	644	9.8%		98.9%
3000-3499	245	3.7%		
2500-2999	69	1.1%		
<2500	4	0.1%		100.0%
<b>Grand Total</b>	<b>6540</b>	<b>100%</b>		

Prepared by: LAWA Noise Management  
 \*Data source: LAX ANOMS



THANK YOU